

Plant Diversity of the Baraiyadhala National Park in Chattogram, Bangladesh

M. R. Karim^{1*}, M. F. Ahsan¹, S. B. Uddin², A. S. M. S. Rahman³

¹Department of Zoology, University of Chittagong, Chittagong, Bangladesh

²Department of Botany, University of Chittagong, Chittagong, Bangladesh

³Department of Zoology, Noakhali Science and Technology University, Noakhali, Bangladesh

Email: *helal03cu@gmail.com

How to cite this paper: Karim, M.R., Ahsan, M.F., Uddin, S.B. and Rahman, A.S.M.S. (2023) Plant Diversity of the Baraiyadhala National Park in Chattogram, Bangladesh. *American Journal of Plant Sciences*, 14, 357-376.

<https://doi.org/10.4236/ajps.2023.143024>

Received: December 13, 2022

Accepted: March 28, 2023

Published: March 31, 2023

Copyright © 2023 by author(s) and Scientific Research Publishing Inc. This work is licensed under the Creative Commons Attribution International License (CC BY 4.0).

<http://creativecommons.org/licenses/by/4.0/>



Open Access

Abstract

The floristic diversity was carried out from the selected trails while studying wildlife at the Baraiyadhala National Park of Chattogram in Bangladesh from August 2012 to July 2013 and June to October 2017. In total 267 species of plants (Bryophytes three, Pteridophytes 15, Gymnosperm one, Dicotyledons 200 and Monocotyledons 48) belonging to 186 genera and 80 families were recorded, which included 102 (38.20%) species of trees, 84 (31.46%) shrubs, 66 (24.71%) herbs and 15 (5.61%) species of climbers. Overall, Euphorbiaceae (dicotyledon) constituted the largest family in the study area having 12 genera and 18 species, while Cyperaceae (monocotyledon) was the second largest family represented by four genera and 11 species. The single gymnosperm species was *Cycas pectinata* Griff. (Assam cycas) under Cycadaceae family that naturally grows there. Most of the recorded plants were terrestrial while the others were aquatic or swampy. Among the plants, 210 (78.66%) species were native, of which 152 were Native (wild), 40 Native (wild & cultivated) and 18 Native (cultivated), and the remaining 57 (21.34%) alien species. Of the alien species seven were Alien (wild), ten Alien (wild and cultivated), four Alien (invasive) and 36 Alien (cultivated). Of the 267-plant species, the highest number was medicinally followed by 41 edible, 31 timber, 13 fuel wood and ornamental, 13 fodder, seven ornamental, six species used for domestic purposes and fodder, five edible and medicinal, three vegetables, two vegetables and medicinal, two edible and timber, two timber and leaf, two ornamental and medicinal, one chemical indicator, one ornamental and timber, and the use of 17 rest species was unknown.

Keywords

Plant, Diversity, Baraiyadhala National Park, Chattogram, Bangladesh

1. Introduction

Baraiyadhala National Park (BNP) (Map one), formerly a part of the Reserved Forest of Chattogram North Forest Division, was designated a protected area on 6 April 2010 through a Gazette Notification (PaBaMa/Bon Sha-2/02/National Park/10/2010/210) under the provisions of Article 23(1) of the Bangladesh Wildlife (Preservation) (Amendment) Act, 1974 (which has now been altered by Wildlife [Conservation and Security] Act, 2012). The Park is located 172 km southeast of Dhaka and 45 km northwest of Chattogram City (22°40.489' and 22°48'N and 90°40' and 91°55.979'E). It covers the area of Sitakunda and Mirsharai Upazilas and is situated about 1.5 km west of the Dhaka-Chattogram Highway and 0.5 km west of Dhaka-Chattogram Railway Line. The park encompasses 2933.61 ha of land area under the Baraiyadhala Forest Range Office. The Park comprises three blocks: Baraiyadhala and Wahidpur Blocks under Baraiyadhala Forest Beat, and Kunderhat Block under Bartakia Forest Beat.

The BNP supports the following types of forest: tropical semi-evergreen; tropical wet evergreen; tropical moist deciduous; bamboo thickets; and plantation. The topography of the Park is very undulating and covered with a linear hill range (elongation north to south reaching an altitude up to 350 m). Hilly topography constitutes high (152 to 365 m), medium-high (76 to 152 m) and lower hills (15 to 76 m). The park area is Mio-Pliocene in origin where 3 representative geological series (Surma, Tipam and Dhupitila) are found and the soils are yellowish brown to strong brown (high hills), strong brown to yellowish red (low hills) [1], and brown colored foothill (piedmont) soils are usual, slightly acid or neutral, with high base status [2]. The park is interspersed by valleys, gullies and streams. Most of the streams are seasonal and dry up during the off-monsoon season. The park area enjoys a moist tropical maritime climate and rainfall is frequent and heavy during the monsoon season (May to October) ranging between 115.2 mm to 561.1 mm. The average maximum annual temperature was 31.50°C and the minimum 20.67°C, whereas the average maximum and minimum range of relative humidity were respectively 99.10% and 49.86% (Sitakunda Agro-met. Office, 2012-13).

Literature survey reveals that the vegetation in this part of the Orient started in the 19th Century by [3] but [4] spent more time in the field and also contributed more than anybody else. [5] initiated writing of local flora of the Sundarbans. Later, [6] made a list of plants of Chittagong Collectorate and Hill Tracts. [7] and [2] contributed significantly to the floral study of the then East Pakistan (now Bangladesh), and in Bangladesh [8] was the pioneer to do the same. Recently, [9] and [10] [11] have compiled a list of the flora of Bangladesh, which indicate that 3562 species under 1379 genera and 199 families in Bangladesh. More recently, [12] have annotated a list of plants and mentioned 5016 species under 1666 genera and 219 families.

Although it is not a detail of the flora of an area studying vegetation is rather an integral part of understanding the ecology of the studied wildlife species. In

this concept, while studying hoolock gibbon, [13] listed tree species from selected trails for phenological studies in Lawachara National Park (former West Bhanugach Reserved Forest) and Chunut Wildlife Sanctuary. [14] collected plant samples from Hazarikhil Forest Beat area of Chittagong (now called Hazarikhil Wildlife Sanctuary). [15] worked on plant diversity in the Sitakunda Forest Range area. [16] listed tree species from Rema-Kalenga Wildlife Sanctuary from the phenological study of the selected transects while studying langurs.

There is no published and/or unpublished work on plants of the Baraiyadhala National Park. So, an attempt was taken to make a preliminary list of plants from selected trails during studying the wildlife of the Park of Chattogram in Bangladesh.

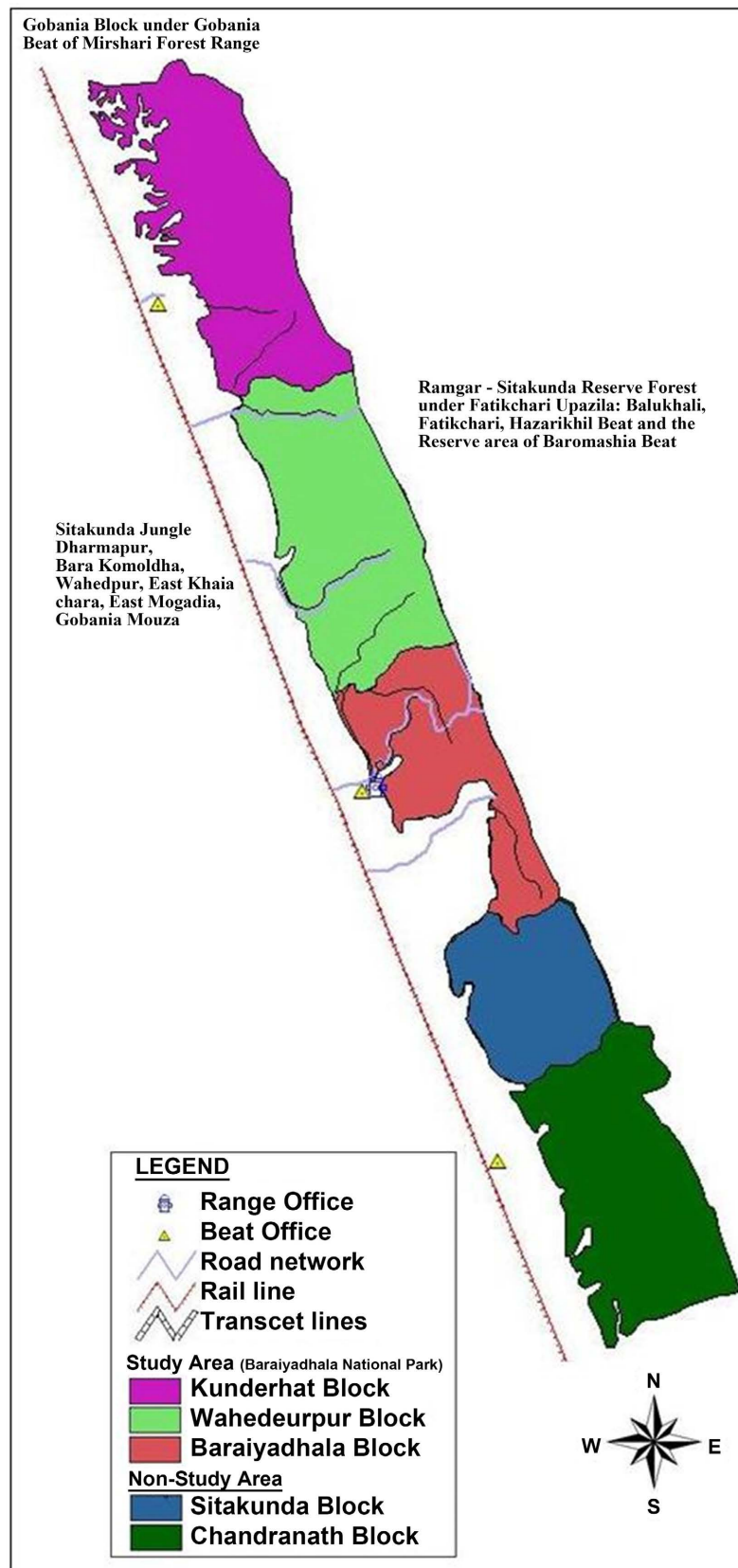
2. Methods

Fieldwork was carried out at the BNP (**Map 1**) in Chittagong (now called Chattogram), Bangladesh from August 2012 to July 2013 and June to October 2017. Monthly minimum three and maximum five days were spent in the field during the study period. Plant samples were collected from selected trails while studying wildlife which covered almost all habitats of the study area including hilltops, slopes, foothills, valleys and wet areas in the BNP. To identify the plant specimens have been applied some techniques. Firstly, the local name of the plants has been collected from local people and then confirmed with the help of [12]. Secondly, flowering or fruiting specimens were collected and processed using standard herbarium techniques [17] [18]. The plant specimens were also identified by consulting different floras and literatures, *viz.*, [9] [10] [11] [19] [20] [21] and by comparing with the herbarium specimens available at Department of Botany, University of Chittagong. Some noxious and beneficial exotic plant species were also identified comparing with the report of [22]. Field data on plants were arranged in alphabetic family sequence.

3. Results

A total 267 species of plants belonging to 186 genera and 80 families of four different categories (forms) *viz.*, trees (38.20%), shrubs (31.46%), herbs (24.71%) and climbers (5.61%) has been documented from the Baraiyadhala National Park (BNP) (**Figure 1**) (**Appendix 1**).

Trees constituted the major category (102 species, 74 genera and 33 families) of the plant community, while climbers represented the minor group (15 species, 10 genera and eight families) (**Table 1**). Furthermore, among the plant species (267), Magnoliopsida (Dicotyledons) was the highest group (200 species, 144 genera and 59 families) followed by Liliopsida (Monocotyledons) (48 species, 30 genera and 12 families), Pteridophytes (15 species, eight genera and six families), Bryophytes (three species, three genera and two families) and Gymnosperms (single species). In Magnoliopsida, Euphorbiaceae constituted the largest family in the study area having 18 species under 12 genera while the several families



Map 1. Baraiyadhala forest range (Study Area: Baraiyadhala National Park). Source: Based map Collected from Baraiyadhala Forest Range office, 2013.

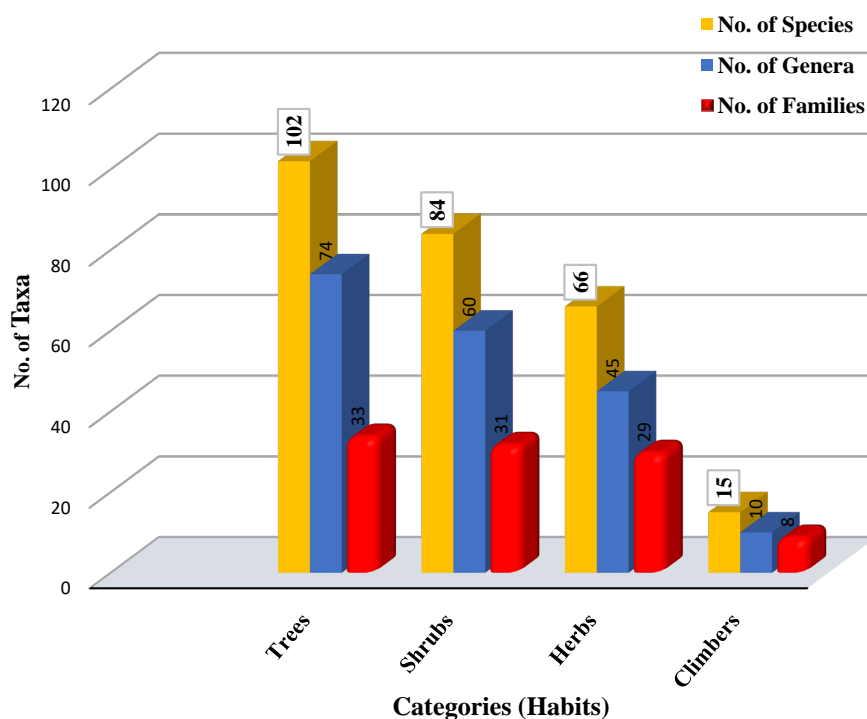


Figure 1. Number of taxa of different categories of plants recorded from Baraiyadhala National Park.

Table 1. Synopsis of plant diversity of the Baraiyadhala National Park.

Habit	No. of Species	No. of Genera	No. of Families	% of Habit	Uses			
					Medicine	Edible	Timber	Others
Trees	102	74	33	38.20	22	20	35	25
Shrubs	84	60	31	31.46	46	11	1	26
Herbs	66	45	29	24.71	23	7	-	36
Climbers	15	10	8	5.61	12	2	-	1

were supported by single species (**Appendix 1**). In Liliopsida, Cyperaceae represented the highest number of species (11) and genera (four), and several families had single species (**Appendix 1**). Among the Pteridophytes, several families dominated each which represented three species and in Bryophytes the representative family was Marchantiaceae having two species (**Appendix 1**). It is interesting to note that a single species, *Cycas pectinata* Griff. (Assam cycas) (**Image 1**) represented the Gymnosperms under Cycadaceae family that naturally occurs only in two areas of Bangladesh: shal (*shorea robusta*) forest of northern Mymensingh and the BNP of Chittagong [23]. Plant diversity of the BNP has briefly been analyzed based on their habits and uses by local people (**Table 1**).

Among the recorded plant species, almost all individuals were terrestrial while only 10 species were aquatic are denoted as star mark (*) in **Appendix 1**. Besides, the members of the family Cyperaceae were represented as swampy.

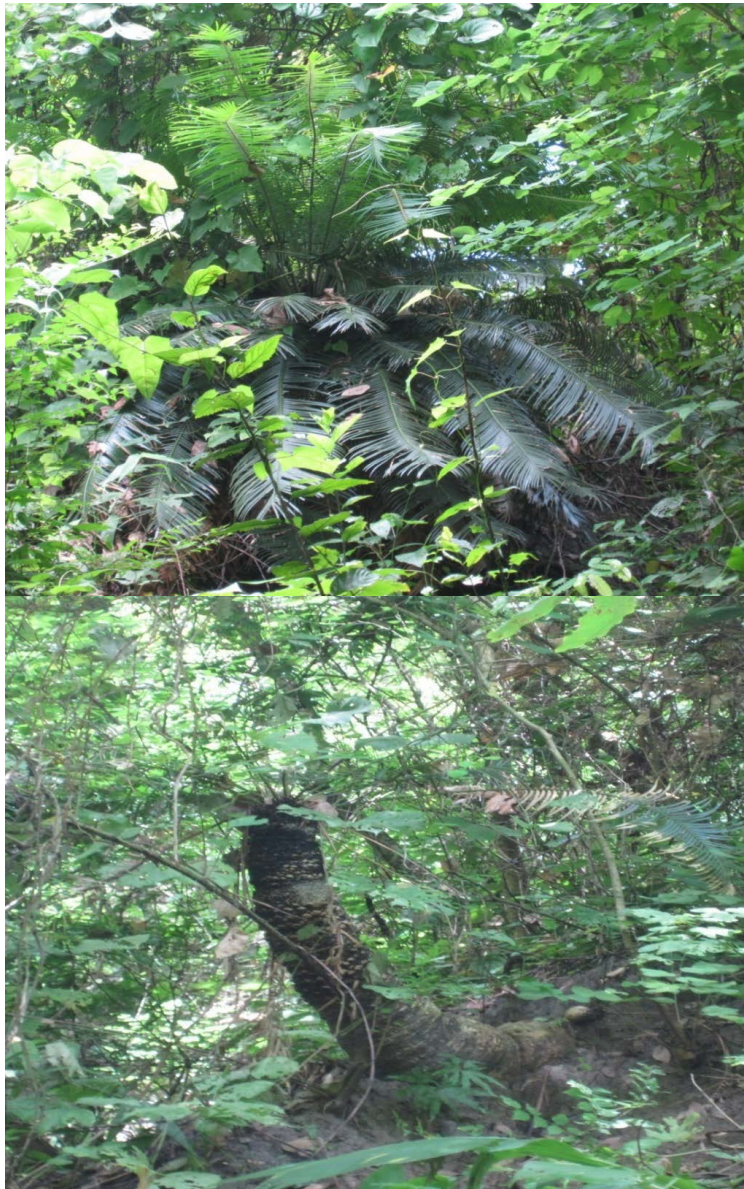


Image 1. Assam cypress (*Cycas pectinata*)—space missing between genus and species (Top: Young; Bottom: Older one).

Of the recorded plants (267 species) in the BNP, 104 (38.95%, belonging to 80 genera and 37 families) had medicinal values (including five edible and medicinal, two ornamental and medicinal and one vegetable and medicinal), which were the dominant group among the plants (**Appendix 1**).

Based on known origin the identified plant species of the BNP were basically divided into two major groups: native (210 species) and alien (57 species). These two groups were further distinguished into seven subgroups: (1) native wild, (2) native cultivated, (3) native wild and cultivated, (4) alien wild, (5) alien cultivated, (6) alien wild and cultivated and (7) alien invasive. Among the native plants, the dominant subcategory was native wild species (152 species) followed by native wild and cultivated (40 species), while for alien species, alien cultivated

was the highest subcategory represented by 36 species. Both native and alien cultivated plants had 54 species (18 native and 36 alien). [22] enlisted a total of 299 species of exotic (alien) plants (trees, shrubs, herbs and lianas) known to occur in Bangladesh, where herbs and lianas are the dominant group followed by trees and shrubs.

4. Discussion

[14] identified 221 species (out of 390 samples) supported by 167 genera and 54 families from Hazarikhil Wildlife Sanctuary, Chittagong. [15] listed 203 species of plants represented by 154 genera and 54 families from the Sitakunda forested area of Chittagong (which partly includes the BNP), but they did not mention Assam cycas (*Cycas pectinata*), a common species in the BNP (globally Vulnerable [24]). Further, wildlife-related plant studies have been carried out by some workers at different places at different times. For example, during studying hoolock gibbon, [13] listed 114 tree species (plus about 100 unidentified) belonging to 74 genera and 39 families from trails for phenological studies in the Lawachara National Park (former West Bhanugach Reserved Forest) and 58 tree species (plus 5 unidentified) under 39 genera and 27 families from Chunati Wildlife Sanctuary. [16] enlisted 70 (plus five unidentified) tree species supported by 49 genera and 30 families from Rema-Kalenga Wildlife Sanctuary from the phenological study of the selected transects while studying capped and Phayre's langurs.

As the study area is hilly, terrestrial habitat dominates there and also terrestrial plants. Due to the lack of large water bodies like ditches, and marshes, water is not available throughout the year except only wet season. That is why aquatic plant diversity is somewhat poor.

[25] reported 54 species (34 families) of medicinal plants from the Sitakunda Botanical Garden and Eco-Park of Chittagong and [26] recorded 55 tree species (26 families) of medicinal plants from the Chunati Wildlife Sanctuary, Chittagong. The demand for plant-based medicines is increasing day by day due to the side effects of pharmaceutical drugs and the reduction of their resistance to disease. So, medicinal plants are most important for traditional herbalists, Unani and Ayurvedic industries. There are 180 medicinal plant-based drug industries throughout Bangladesh [24]. But at the same time unfortunately it is true that 70% of raw materials for Unani and Ayurveda preparations are imported from foreign countries and most of them are from India due to the decline of production and abundance of natural forests in Bangladesh [27]. As part of wildlife habitat, BNP supports a significant amount (near about 25%) of edible and fodder plant species, which supply foods (fruits, leaves and other plant parts) to wildlife (**Appendix 1**). Furthermore, the Park also supports several keystone (plant) species for instance, *Ficus* spp., *Bombax ceiba*, and *Phoenix sylvestris* [28] on which several species of wildlife depend for foods during the lean season.

From the above discussion, it reveals that the BNP is important from both

economic and wildlife habitat viewpoints, and needs attention to conserve it.

Conflicts of Interest

The authors declare no conflicts of interest regarding the publication of this paper.

References

- [1] Hassan, M.M. (1994) Forest Soils of Bangladesh. *Bangladesh Journal of Forest Science*, **23**, 1-11.
- [2] Champion, H.G., Seth, S.K. and Khattack, G.M. (1965) Manual of Silviculture for Pakistan. Pakistan Forest Institute, Peshwar, 547 p.
- [3] Roxburgh, W. (1814) Hortusbengalensis. Boerhaave Press, Leiden, 1-105.
- [4] Hooker, J.D. (1872-1897) Flora of British India. Vol. I-VII, Reeve & Co. Ltd., London.
- [5] Prain, D. (1903) Flora of Sundribans. *Records of the Botanical Survey of India*, **2**, 271-370.
- [6] Heinig, R.L. (1925) List of Plants of Chittagong Collectorate and the Hill Tracts. The Bengal Govt. Branch Press, Darjeeling, 1-84.
- [7] Champion, H.G. (1935) A Preliminary Survey of the Forest Types of India and Burma. *Indian Forestry Records (New Series), Silviculture*, **I**, 1-351.
- [8] Khan, M.S. (1972-1987) Flora of Bangladesh, Vol. 2-43. Bangladesh National Herbarium, Dhaka.
- [9] Siddiki, K.U., Islam, M.A., Ahmed, Z.U., Begum, Z.N.T., Hassan, M.A., Khondker, M., Rahman, M.M., Kabir, S.M.H., Ahmad, M., Ahmed, A.T.A., Rahman, A.K.A. and Haque, E.U. (2007) Encyclopedia of Flora and Fauna of Bangladesh, Vol. 5. Bryophytes, Pteridophytes, Gymnosperms. Asiatic Society of Bangladesh, Dhaka, 339 p.
- [10] Ahmed, Z. U., Begum, Z.N.T., Hassan, M.A., Khondker, M., Kabir, S.M.H., Ahmad, M., Ahmed, A.T.A., Rahman, A.K.A. and Haque, E.U. (2008) Encyclopedia of Flora and Fauna of Bangladesh, Vol. 12. Angiosperms: Monocotyledons (Orchidaceae-Zingiberaceae). Asiatic Society of Bangladesh, Dhaka, 505 p.
- [11] Ahmed, Z.U., Hassan, M.A., Begum, Z.N.T., Khondker, M., Kabir, S.M.H., Ahmad, M., Ahmed, A.T.A., Rahman, A.K.A. and Haque, E.U. (2009) Encyclopedia of Flora and Fauna of Bangladesh, Vol. 8. Angiosperms: Dicotyledons (Fabaceae-Lythraceae). Asiatic Society of Bangladesh, Dhaka, 478 p.
- [12] Pasha, M.K. and Uddin, S.B. (2013) Dictionary of Plant Names of Bangladesh (Vascular Plants). Janokalyan Prokashni, Chittagong, 434 p.
- [13] Ahsan, M.F. (1994) Behavioural Ecology of the Hoolock Gibbon (*Hylobates hoolock*) in Bangladesh. University of Cambridge, Cambridge, 446 p.
- [14] Uddin, A.T.M.M. (1996) Investigation and Assessment of Plant Diversity of Hazarikhil, Chittagong. MS Thesis, Department of Botany, University of Chittagong, Chittagong, 219 p.
- [15] Rahman, M.A. and Uddin, S.B. (1997) Angiospermic Flora of Sitakunda in Chittagong. *Bangladesh Journal of Plant Taxonomy*, **4**, 17-36.
- [16] Kabir, M.M. (2002) Behavioural Ecology of Two Sympatric Langur Species in the Semi-Evergreen Forest of Bangladesh. University of Cambridge, Cambridge, 351 p.

- [17] Hyland, B.P.M. (1972) A Technique for Collecting Botanical Specimens in Rainforest. *Flora Malesiana Bulletin*, **26**, 2038-2040.
- [18] Alexiades, M.N. (1996) Selected Guidelines for Ethnobotanical Research: A Field Manual. New York Botanical Garden, New York, 99-133.
- [19] Hossain, A.B.M., Alam, M.D., Rahim, M.A. and Rahim, M.A. (2009) A Pictorial Guide to Nursery Plants. Jahangirnagar University, Dhaka.
- [20] Yusuf, M., Chowdhury, J.U., Wahab, M.A. and Begum, J. (2009) Medicinal Plants of Bangladesh. BCSIR, Dhaka, 794 p.
- [21] Ghani, A. (2003) Medicinal Plants of Bangladesh with Chemical Constituents and Uses. Asiatic Society of Bangladesh, Dhaka, 603 p.
- [22] Hossain, M. K. and Pasha, M.K. (2004) An Account of the Exotic Flora of Bangladesh. *Journal of Forestry and Environment*, **2**, 99-115.
- [23] Rahman, M.M. (2007) *Cycas pectinata* Griff., Notul. Pl. Asiat. 4, t 360, f. 3 10 t (1854), 347-348. In: Siddiki, K.U., Islam, M.A., Ahmed, Z.U., Begum, Z.N.T., Hassan, M.A., Khondker, M., Rahman, M.M., Kabir, S.M.H., Ahmad, M., Ahmed, A.T.A., Rahman, A.K.A. and Haque, E.U., Eds., *Encyclopedia of Flora and Fauna of Bangladesh: Bryophytes, Pteridophytes, Gymnosperms*, Vol. 5, Asiatic Society of Bangladesh, Dhaka, 391 p.
- [24] Nguyen, H.T. (2010) *Cycas pectinata*. The IUCN Red List of Threatened Species 2010: e.T42062A10617695.
<https://dx.doi.org/10.2305/IUCN.UK.2010-3.RLTS.T42062A10617695.en>
- [25] Uddin, M.S., Hossain, M.K. and Huda, S.M.S. (2005) Distribution Pattern of Medicinal Plant Species in Sitakunda Botanical Garden and Eco-Park of Chittagong, Bangladesh. *Hamdard Medicus*, **48**, 118-124.
- [26] Rahman, M.L. and Hossain, M.K. (2002) Distribution Pattern of Medicinal Plant Species in Chunati Wildlife Sanctuary of Bangladesh. *Journal of Tropical Medicinal Plants*, **3**, 65-72.
- [27] Rashid, M.H., Mohiuddin, M., Ara, R. and Alam, M.J. (1990) Medicinal Plants and Their Cultivation (Bengali). *Bulletin 4: Minor Forest Product Series*, Bangladesh Forest Research Institute, Chittagong, 27 p.
- [28] Ahsan, M.F. and Hannan, M.A. (2003) A Preliminary Observation on Keystone Plant Species for Birds of the Karnaphuli River Delta and Adjacent Areas of Chittagong, Bangladesh. *Journal of Biological Sciences*, **11**, 39-44.
- [29] Mazid, M.A., Datta, B.K., Nahar, L., Bashar, S.M.A., Bachar, S.C. and Sarker, S.D. (2009) Analgesic, Anti-Inflammatory and Diuretic Properties of *Polygonum barbatum* (L.) Hara var. *barbata*. *Brazilian Journal of Pharmacognosy*, **19**, 749-754.
<https://doi.org/10.1590/S0102-695X2009000500017>
- [30] Khan, M.A., Marwat, K.B., Gul, B., Wahid, F., Khan, H. and Hashimi, S. (2014) *Pistia stratiotes* L. (Araceae): Phitochemistry, Use in Medicines, Phytoremediation, Biogas and Management Options. *Pakistan Journal of Botany*, **46**, 851-860.
- [31] Kirtikar, K.R. and Basu, B.D. (1918) Indian Medicinal Plants. Sudhindra Nath Basu, M.B. Panini Office, Bhuvanésvari Asrama, Bahadurganj, Allahabad, 800 p.
<https://doi.org/10.5962/bhl.title.137025>
- [32] Zhuang, X. and Beentje, H.J. (2017) *Hydrilla verticillata*. The IUCN Red List of Threatened Species 2017: e.T167871A65905991.
- [33] Kirtikar, K.R. and Basu, B.D. (1935) Indian Medicinal Plants. L.M. Basu, Allahabad, 2752.

Appendix 1. List of the Plant Species through the Trails of the Study Area

Trees

SN	Scientific Name	Local Name	English Common Name	Use	Status
Magnoliopsida (Dicotyledons)					
1. Acanthaceae A. L. de Jussieu					
1	<i>Eranthemum pulchellum</i> Anderson	Shukh Murali	Nt	Ornamental	N (wild)
2. Anacardiaceae Lindley					
2	<i>Anacardium occidentale</i> L.	Kaju Badam	Cashew Nut	Edible (fruit & nut)	A (cul)
3	<i>Lannea coromandelica</i> (Houtt.) Merr.	Bhadi, Jiga	Wodier	Fodder & fruit for birds	N (wild & cul)
4	<i>Mangifera indica</i> L.	Aam	Mango Tree	Edible (fruit)	N (cul)
5	<i>M. sylvatica</i> Roxb.	Jongliaam	Wild Mango	Fuel wood	N (wild)
6	<i>Swintonia floribunda</i> Griff.	Civit (Ctg)	Not known (Nt)	Timber	N (wild)
3. Apocynaceae A. L. de Jussieu					
7	<i>Alstonia scholaris</i> (L.) R. Br.	Chattim	Devil's Tree	Medicinal (bark)	N (wild & cul)
8	<i>Holarrhena antidysenterica</i> (Roxb. ex Fleming.) Wall. ex A. DC.	Karach (Ctg.)	Bitter Oleander	Medicinal (bark)	N (wild)
9	<i>Wrightia arborea</i> (Dennst.) Mabb.	Dudhkurus	Nt	Medicinal (bark)	N (wild)
4. Bignoniaceae C. A. Agardh					
10	<i>Oroxylum indicum</i> (L.) Kurz	Sonapatha	Indian Trumpet	Medicinal (young fruit)	N (wild)
11	<i>Stereospermum colais</i> (Buch.-Ham. ex Dillw.) Mabb.	Dharmara	Yellow Snake Tree	Timber	N (wild)
5. Bombaceae Kunth					
12	<i>Bombax ceiba</i> L.	Shimul	Red Silkcotton Tree	Multi-uses	A (wild & cul)
13	<i>B. insigne</i> Wall.	Bon Shimul	Nt	Multi-uses	N (wild)
6. Burseraceae					
14	<i>Protium serratum</i> (wall. ex Coelbr.) Engl.	Gutgutya	Indian-red Pear	Timber	N (wild)
7. Caesalpiniaceae R. Brown					
15	<i>Cassia fistula</i> L.	Sonalu	Golden Shower Tree	Multi-uses	N (wild & cul)
16	<i>Delonix regia</i> (Hook.) Raf.	Krishnachura	Peacock Flaower	Ornamental	A (cul)
17	<i>Saraca indica</i> L.	Panshi Ashok	Yellow Saraca	Ornamental	N (wild & cul)
18	<i>Senna siamea</i> (Lam.) H.S. Irwin & Barneby	Minjiri	Thailand Cassia	Fuel wood	A (cul)
19	<i>Tamarindus indica</i> L.	Tentul, Ambli	Tamariand Tree	Edible (fruit)	A (cul)
8. Clusiaceae Lindley					
20	<i>Garcinia xanthochymus</i> Hook. f. ex T. Anderson	Tamal	Mysore Gamboge	Multi-uses	N (wild & cul)
9. Combretaceae R. Brown					
21	<i>Combretum acuminatum</i> Roxb.	Patyuni	Nt	Nt	N (wild)

Continued

22	<i>Terminalia arjuna</i> (Roxb. ex DC.) Wight & Arn.	Arjun	White Murdah	Medicinal (bark)	N (cul)
23	<i>T. bellirica</i> (Gaertn.) Roxb.	Bohera	Bastard Mayrobalan	Medicinal (fruit)	N (wild & cul)
24	<i>T. chebula</i> (Gaertn.) Retz.	Horitoki	Gall Nut	Medicinal (fruit)	N (wild & cul)
10. Dipterocarpaceae Blume					
25	<i>Anisoptera scaphula</i> (Roxb.) Pierre	Boilam, Boilsur	Mascle Wood Tree	Timber	N (wild & cul)
26	<i>Hopea odorata</i> Roxb.	Telsur	Rock Dammar	Timber	N (wild & cul)
11. Ebenaceae Gurke					
27	<i>Diospyros blancoi</i> A. DC.	Beelati Gab	Butter Fruit tree	Edible (fruit)	A (wild & cul)
28	<i>D. malabarica</i> (Desr.) Kostel.	Deshi Gab	Malabar Ebony	Medicinal (fruit)	N (wild & cul)
12. Euphorbiaceae A. L. de Jussieu					
29	<i>Baccaurea ramiflora</i> Lour.	Latkan	Burmese Grape	Edible (fruit)	N (wild & cul)
30	<i>Chaetocarpus castanocarpus</i> (Roxb.) Thwaites	Castenea	Nt	Timber	N (wild & cul)
31	<i>Macaranga denticulata</i> (Blume) Muell. Arg.	Khoi	Nt	Medicinal (bark)	N (wild)
32	<i>M. peltata</i> (Roxb.) Mull. Arg.	Peltabura	Nt	Medicinal (bark)	N (wild)
33	<i>Mallotus philippensis</i> (Lam.) Mull. Arg.	KamalaGuli, Rohini (Ctg)	Red Berry	Medicinal (bark)	N (wild)
34	<i>Phyllanthus emblica</i> L.	Amloki	Indian Goose Berry	Medicinal (fruit)	N (wild & cul)
35	<i>Suregada multiflora</i> (A. Juss.) Baill.	Ban-naranga	Nt	Medicinal (bark)	N(wild)
13. Fabaceae Lindley					
36	<i>Butea monosperma</i> (Lam.) Taub.	Palash	Flame of the Forest	Medicinal (bark)	N (wild & cul)
37	<i>Pterocarpus indicus</i> Willd.	Deshi Chandan	Andaman Red Wood	Timber	N (wild & cul)
14. Flacourtiaceae A. P. de Candolle					
38	<i>Hydnocarpus kurzii</i> (King) Warb.	Chaulmugra	Chaulmugra	Medicinal (fruit)	N (wild)
15. Lauraceae A. L. de Jussieu					
39	<i>Litsea glutinosa</i> (Lour.) C.B. Rob.	Menda (Ctg.), Meda	Common Tallow Laurel	Timber & leaf	N (wild)
40	<i>L.laeta</i> (Wall. ex Nees) Hook.f.	Bon-hoalu	Nt	Timber & leaf	N (wild)
16. Lecythidaceae Poiteau					
41	<i>Barringtonia acutangula</i> (L.) Gaertn.	Hijal	Indian Oak	Timber	N (wild)
17. Lythraceae Jaume St.-Hilaire					
42	<i>Lagerstroemia speciosa</i> (L.) Pers.	Jarul	Lilac	Timber	A (wild & cul)
18. Malvaceae A. L de Jussieu					
43	<i>Thespesia populnea</i> (L.) Soland. ex Correa	Poreshpipul	Indian Tulip Tree	Medicinal	N (wild & cul)
19. Meliaceae A. L. de Jussieu					
44	<i>Aphanamixis polystachya</i> (Wall.) R. Parker	Pitraj	Amoora	Timber	N (wild & cul)
45	<i>Azadirachta indica</i> A. Juss.	Neem Gach	Indian Lilac	Medicinal (fruit & leaf)	N (wild & cul)

Continued

46	<i>Chukrasia tabularis</i> A. Juss.	Chikrassi	Indian Mahogany	Timber	N (wild & cul)
47	<i>Swietenia mahagoni</i> (L.) Jacq.	Mahogini	Spanish Mahogany	Timber	A (cul)
48	<i>Toona ciliata</i> Roemer	Toon	Red Cedar	Timber	A (wild & cul)
20. Mimosaceae R. Brown					
49	<i>Acacia auriculiformis</i> Benth.	Akashmoni	Ear-pod Wattle	Timber	A (wild & cul)
50	<i>A. longifolia</i> (Andrews) Willd.	Katalambu	Sydney Golden Wattle	Ornamental	A (cul)
51	<i>A. mangium</i> Willd.	Mangium	Wattle	Timber	A (cul)
52	<i>Albizia chinensis</i> (Osbeck) Merr.	Chakua Koroi	Chinese Albizia	Timber	A (cul)
53	<i>A. lebbek</i> (L.) Benth.	Kalokoroi	Black Siris	Multi-uses	A (wild & cul)
54	<i>A. lucidor</i> (Steud.) I.C. Nielsen	Sil-koroi	Nt	Timber	N (wild & cul)
55	<i>A. odoratissima</i> (L.f.) Benth.	Tetuia, Karach (Ctg)	Black Siris	Timber	N (cul)
56	<i>A. procera</i> (Roxb.) Benth.	Sada Koroi	White Siris	Timber	N (wild & cul)
57	<i>A. saman</i> (Jacq.) Merr.	Fulkoroi	Raintree	Timber	A (cul)
58	<i>Xylia xylocarpa</i> (Roxb.) Taub.	Lohakat	Iron Wood Tree	Timber	A (cul)
21. Moraceae Link					
59	<i>Artocarpus champa</i> Buch-Ham. ex Wall.	Chapalish	Monkey Jack	Edible (fruit) & timber	N (wild & cul)
60	<i>A. heterophyllus</i> Lam.	Kanthal	Jack Wood	Edible (fruit)	A (wild & cul)
61	<i>A. lacucha</i> Buch.-Ham.	Deua, Barta (Ctg)	Monkey Jack	Edible (fruit) & timber	N (wild & cul)
62	<i>Ficus benghalensis</i> L.	Bot	Banyan Tree	Fodder & fruit	N (wild & cul)
63	<i>F. benjamina</i> L.	Pakur, Jiri-bot (Ctg)	Yellow Fig	Fodder & fruit	N (wild & cul)
64	<i>F. hispida</i> L. f.	Dumur	Rough Leaved Fig	Edible (fruit)	N(wild)
65	<i>F. racemosa</i> L. var.	Jagyadumur	Cluster Fig	Edible (fruit)	N(wild)
22. Moringaceae Dumortier					
66	<i>Moringa oleifera</i> Lam.	Sajna	Drumstick	Edible (fruit) & medicinal	N(cul)
23. Myrtaceae A. L. de Jussieu					
67	<i>Eucalyptus alba</i> Reinw.	Eucalyptus	Timor White Gum	Timber	A (cul)
68	<i>E. globulus</i> Labill	Nt	Globu Eucalyptus	Timber	A (cul)
69	<i>E. grandis</i> W. Hill ex Maiden	Toolar Eucalyptus	Grand Eucalyptus	Timber	A (cul)
70	<i>E. saligna</i> Sm.	Eucalyptus	Sydney Blue Gum	Timber	A (cul)
71	<i>Eugenia roxburghii</i> DC.	Menadi	Nt	Edible (fruit)	N (wild & cul)
72	<i>Psidium guajava</i> L.	Peyara, Goya	Guava	Edible (fruit)	A (cul)
73	<i>P. area</i> Raddi	Jangli Pyara	Wild Guyava	Edible (fruit)	A (cul)
74	<i>Syzygium cymosum</i> (Lam.) DC.	Khudijam	Nt	Edible (fruit)	N (wild & cul)
75	<i>S. fruticosum</i> (Roxb.) DC.	Banjam	Nt	Fuel wood	N (wild)

Continued

76	<i>S. grande</i> (Wight) Walp.	Dhakijam	Nt	Edible (fruit)	N (cul)
24. Rhizophoraceae R. Brown					
77	<i>Kandelia candel</i> (L.) Druce	Gora	Nt	Fuel wood	N (wild)
25. Rubiaceae A. L. de Jussieu					
78	<i>Gardenia coronaria</i> Buch.-Ham	Sita Gach	Nt	Timber	N (wild)
79	<i>Neolamarckia cadamba</i> (Roxb.) Bosser	Kadam	Nt	Ornamental & timber	N (wild & cul)
26. Sapindaceae A. L. de Jussieu					
80	<i>Erioglossum rubiginosum</i> Blume	Ritha, Harina	Nt	Fuel wood	N (wild & cul)
81	<i>Lepisanthes senegalensis</i> (Poir.) Leenh.	Gota Harina	Nt	Edible (fruit)	N (wild)
82	<i>Litchi chinensis</i> Sonn.	Lichu	Litchi	Edible (fruit)	A (cul)
27. Sonneratiaceae Engler & Gilg					
83	<i>Duabanga grandiflora</i> (Roxb. ex DC.) Walp.	Bandarhola	Nt	Timber	N (wild)
28. Sterculiaceae Bartling (1830)					
84	<i>Pterospermum acerifolium</i> (L.) Willd.	Kanokchapa	Maple Leaved Bayur	Medicinal (bark)	N (wild)
85	<i>Pterygota alata</i> (Roxb.) R. Br.	Buddha-narikel	Buddha's Coconut	Multi-uses	N (wild & cul)
86	<i>Sterculia guttata</i> Roxb.	Bansal	Nt	Edible & medicinal (bark)	N (wild & cul)
87	<i>S. villosa</i> Roxb.	Baro Ujal	Nt	Edible (fruit)	N (wild & cul)
29. Thymelaeaceae A. L. de Jussieu					
88	<i>Aquilaria agallocha</i> Roxb.	Agar Gach	Agar	Multi-uses	N (wild & cul)
30. Tiliaceae A. L. de Jussieu					
89	<i>Grewia laevigata</i> Vahl	Levibicha	Nt	Fodder	N (wild)
90	<i>G. villosa</i> Willd.	Banta Bicha	Tamthar	Fodder	N (wild)
91	<i>Microcos paniculata</i> L.	Achaar Gach	Nt	Medicinal	N (wild)
31. Ulmaceae Mirbel					
92	<i>Trema orientalis</i> (L.) Blume	Chikan	Indian Nettle Tree	Fuel wood	N (wild)
32. Verbenaceae Jaume St.-Hilaire					
93	<i>Callicarpa arborea</i> Roxb.	Bormala	Nt	Medicinal	N (wild)
94	<i>Gmelina arborea</i> Roxb.	Gamar	White Teak	Timber	N (wild & cul)
95	<i>Tectona grandis</i> L. f.	Segun	Teak Tree	Timber	A (cul)
96	<i>Vitex glabrata</i> R. Br.	Goda Gach	Smooth Chaster Tree	Timber	N (wild)
Liliopsida (Monocotyledons)					
33. Arecaceae A. L. de Jussieu					
97	<i>Areca catechu</i> L.	Supari Gach	Areca-nut Plant	Edible (fruit)	A (cul)
98	<i>Borassus flabellifer</i> L.	Tal Gach	Barb Tree	Edible (fruit)	A (wild & cul)
99	<i>Caryota mitis</i> Lour.	Maitagota	Fish-tail Palm	Ornamental	N (cul)
100	<i>C. urens</i> L.	Ban Supari	Indian Sago Palm	Ornamental	N (wild)
101	<i>Cocos nucifera</i> L.	Narikel, Dab	Coconut Palm	Edible (fruit)	A (cul)
102	<i>Phoenix sylvestris</i> (L.) Roxb.	Desi Khejur	Indian Wild Palm	Edible (fruit & exude)	A (wild & cul)

Shrubs

SN	Scientific Name	Local Name	English Common Name	Use	Status
Magnoliopsida (Dicotyledons)					
2. Annonaceae A. L. de Jussieu					
1	<i>Uvaria</i> sp.	Ranga Gach	Nt	Edible (fruit)	N (wild)
2	<i>U. hamiltonii</i> Hook. f. & Thom.	Latkanranga	Nt	Edible (fruit)	N (wild)
3. Apocynaceae A. L. de Jussieu					
3	<i>Tabernaemontana divericata</i> (L.) R. Br. ex Roemer & Schult	Tagarphul	Moon Bean	Medicinal	N (wild)
4	<i>Vallaris solanacea</i> (Roth) kuntze	Mali	Nt	Medicinal	N (wild)
4. Araliaceae A. L. de Jussieu					
5	<i>Brassaiaopsis glomerulata</i> (Blume) Regel	Kurila	Nt	Edible (fruit)	N (wild)
6	<i>Trevesia palmata</i> (Roxb. ex Lindl.) Vis.	Argoja	Snow Flake Plant	Edible (fruit)	N (wild)
5. Asteraceae Dumortier					
7	<i>Vernonia divergens</i> (DC.) Edgew.	Bichchutivernon	Nt	Medicinal	N (wild)
6. Boraginaceae A. L. de Jussieu					
8	<i>Cordia dichotoma</i> G. Forst.	Boula	Calammy Cherry	Fuel wood	N (wild)
7. Buddlejaceae Wilhelm					
9	<i>Buddleja asiatica</i> Lour	Budbhot	Asian Butterfly Bush	Medicinal	N (wild)
8. Caesalpinaceae R. Brown					
10	<i>Bauhinia malabarica</i> Roxb.	Kanchan	Nt	Ornamental	A (cul)
11	<i>B. purpurea</i> L.	Kanchan	Tree Bean	Ornamental	N (cul)
12	<i>Caesalpinia digyna</i> Rottler	Amalkuchi	Teripods	Medicinal	N (wild)
9. Capparaceae A. L. de Jussieu					
13	<i>Capparis horida</i> L.f.	Hori-kalia	Ceylon Caper	Edible	N (wild)
14	<i>C. spinosa</i> L.	Kabra	Caper Brush	Fooder	A (wild)
10. Euphorbiaceae A. L. de Jussieu					
15	<i>Antidesma acidum</i> Retz.	Multa	Indian Laurel	Edible (fruit)	N (wild)
16	<i>Aporosa octandra</i> (Buch.-Ham. ExD. Don) A.R. Vickery	Soto kechua	Common Aporosa	Edible (fruit)	N (wild)
17	<i>Bridelia</i> sp.	Harinhara	Nt	Edible (fruit)	N (wild)
18	<i>B. stipularis</i> (L.) Blume	Harinhara	Nt	Edible (fruit)	N (wild)
19	<i>B. tomentosa</i> Blume	Poshmi Horinhara	Pop Gun Seed	Edible (fruit)	N (wild)
20	<i>Croton bonplandianus</i> Baill.	Nakphul	Bonplant's Croton	Medicinal	A (inv)
21	<i>C. caudatus</i> Geiseler	Nanbhantui	Nt	Medicinal (fruit)	N (wild)
22	<i>Glochidion assamicum</i> (Mull. Arg.) Hook. f.	Ashami kachua	Nt	Fuel wood	N (wild)
23	<i>G. multiloculare</i> (Rottler ex Willd.) Voigt	Paniatori	Nt	Fuel wood	N (wild)
24	<i>Jatropha curcas</i> L.	Bon verenda	Purging Nut	Medicinal	A (cul)

Continued

25	<i>Phyllanthus reticulatus</i> Poir.	Chitki	Reticulated Leaf-flaver	Medicinal (leaf)	N (wild)
11. Fabaceae Lindley					
26	<i>Crotalaria pallida</i> Aiton	Jhunjhuni	Nt	Medicinal	N (wild)
27	<i>C. tetragona</i> Andrews	Gona Jhanjhani	Nt	Medicinal	N (wild)
28	<i>Desmodium gangeticum</i> (L.) DC.	Salpani	Nt	Medicinal (leaf)	N (wild)
29	<i>Flemingia macrophylla</i> (Willd.) Merr.	Bara-salphan	Nt	Medicinal (leaf)	N (wild)
30	<i>F. strobilifera</i> (L.) W.T. Aiton	Simbusak, Phan	Nt	Medicinal (leaf)	N (wild)
31	<i>Sesbania grandiflora</i> (L.) Pers.	Bokful	Nt	Timber	A (cul)
12. Leeaceae Dumortier					
32	<i>Leea robusta</i> Roxb.	Aunda banga	Nt	Medicinal	N (wild)
13. Lythraceae Jaume St.-Hilaire					
33	<i>Lawsonia inermis</i> L.	Mehedi	Indian Privet	Ornamental (leaf)	A (cul)
34	<i>Woodfordia fruticosa</i> (L.) Kurz	Dhaiphul	Fire-flame Bush	Medicinal (flower)	N (wild)
14. Malvaceae A. L. de Jussieu					
35	<i>Sida acuta</i> Burm. f.	Ban methi	Spiny Head Sida	Medicinal	N (wild)
36	<i>S. cordata</i> (Burm.f.) Waalkes	Pitberal	Cordate-Leaved-sida	Medicinal	N (wild)
37	<i>S. cordifolia</i> L.	Shet-berela	Flannel Weed	Medicinal (leaf)	N (wild)
15. Melastomataceae A. L. de Jussieu					
38	<i>Melastoma malabathricum</i> L.	Bontejpata	Indian Rhododendron	Medicinal	N (wild)
39	<i>Memecylon edule</i> Roxb.	Anjan	Nt	Medicinal (leaf & fruit)	N (wild)
16. Mimosaceae R. Brown					
40	<i>Mimosa himalayna</i> Gamble	Bara-lajjabati	Giant Sensitive Plant	Medicinal	N (wild)
41	<i>M. pudica</i> L.	Lajjabati	Sensitive Plant	Medicinal	A (inv)
17. Moraceae Link					
42	<i>Streblus asper</i> Lour.	Shaora	Tooth Brush Tree	Medicinal	N (wild)
43	<i>S. taxoides</i> (Roth) Kurz	Gutishaora	Lao	Medicinal	N (wild)
18. Myrsinaceae R. Brown					
44	<i>Ardisia humilis</i> Vahl.	Chauldhoa	Low Shoebutton	Medicinal	N (wild)
45	<i>A. solanacea</i> Roxb.	Bonjam	Wild Berry	Medicinal	N (wild)
46	<i>Maesa chisia</i> Buch. -Ham. ex D. Don	Sayauni	Nt	Nt	N (wild)
47	<i>M. indica</i> (Roxb.) A. DC.	Ramjoni	Nt	Medicinal	N (wild)
48	<i>M. ramentacea</i> (Roxb.) A. DC.	Noamoricha	Nt	Medicinal	N (wild)
19. Oleaceae Hoffman. & Link					
49	<i>Jasminum sambac</i> (L.) Aiton	Bonmallika	Arabian Jasmine	Medicinal	N (cul)
20. Onagraceae A. L. de Jussieu					
50*	<i>Ludwigia hyssopifolia</i> (G. Don) Exell.	Panilong	Seedbox	Medicinal [21]	N (wild)

Continued

21. Oxalidaceae R. Brown				
51	<i>Averrhoa bilimbi</i> L.	Bilumbi	Bilimbi,	Edible (fruit) A (cul)
22. Rhamnaceae A. L. de Jussieu				
52	<i>Ziziphus oenoplia</i> (L.) Mill. var. <i>oenoplia</i>	Bonboroi	Jackal Jujube	Medicinal & edible (fruit) A (wild)
23. Rubiaceae A. L. de Jussieu				
53	<i>Ixora coccinea</i> L.	Lalrangan	Jangle Geranium	Medicinal & ornamental N (cul)
54	<i>I. cuneifolia</i> Roxb.	Beophul	Nt	Medicinal N (cul)
55	<i>I. finlaysoniana</i> Wall. ex G. Don	Sadarangan	White Ixora	Ornamental (flower) N (wild)
56	<i>I. pavetta</i> Andr.	Swet Rangan	The torch tree	Ornamental (flower) N (wild)
57	<i>Morinda angustifolia</i> Roxb.	Rong Gach	Nt	Medicinal N (wild)
58	<i>Mussaenda roxburghii</i> Hook. f.	Silchauri	Nt	Medicinal N (wild)
59	<i>Mycetia longifolia</i> (Wall.) Kuntze	Mycetelon	Nt	Nt N (wild)
60	<i>Pavetta indica</i> (Roxb. ex Sm.) Hook. f.	Desi Bonmali	Nt	Medicinal N (wild)
61	<i>P. naucleiflora</i> R. Br. ex G. Don	Moricha	Nt	Nt N (wild)
62	<i>Psychotria</i> sp.	Bhuta	Nt	Nt N (wild)
63	<i>Randia dumetorum</i> (Retz.) Lam.	Monkata	Nt	Medicinal N (wild)
24. Rutaceae A. L. de Jussieu				
64	<i>Citrus aurantiifolia</i> (Christm.) Swingle	Patilebu	Common Lime	Medicinal & edible (fruit) A (cul)
65	<i>C. maxima</i> (Burm. f.) Merr.	Batabilebu	Brange	Medicinal & edible (fruit) A (cul)
66	<i>Glycosmis pentaphylla</i> (Retz.) A. DC.	Kawatuli	Motar Tree	Medicinal N (wild)
25. Scrophulariaceae A. L. de Jussieu				
67	<i>Adenosma indianum</i> (Lour.) Merr.	Barakesuti	Nt	Nt N (wild)
26. Sterculiaceae Bartling				
68	<i>Abroma augusta</i> (L.) L.f.	Ulatkambol	Devil's Cotton	Medicinal (root bark) N (wild & cul)
27. Urticaceae A. L. de Jussieu				
69	<i>Boehmeria macrophylla</i> var. <i>scabrella</i> (Roxb.) D.G. Long	Ulichara	False Nettle	Fuel wood N (wild)
70	<i>Sarcochlamys pulcherrima</i> Gaudich.	Korobi	Nt	Fuel wood N (wild)
28. Verbenaceae Jaume St.-Hilaire				
71	<i>Callicarpa</i> sp	Bormala	Nt	Fuel wood N (wild)
72	<i>Clerodendrum viscosum</i> Vent.	Bhat	Nt	Medicinal N (wild)
73	<i>Duranta erecta</i> L.	Katamehedi	Golden Dewdrop	Ornamental (leaf) A (cul)
74	<i>Lantana camara</i> L.	Lantana	Lantana	Fuel wood A (wild)
75	<i>Premna esculenta</i> Roxb	Lalana	Nt	Medicinal N (wild)
76	<i>Vitex negundo</i> L.	Nishinhda	Chaste Tree	Medicinal N (wild)
77	<i>V. trifolia</i> L.	Choto Nishinda	Simple Leaf Chaster Tree	Medicinal N (wild)

Continued

Liliopsida (Monocotyledons)					
29. Areaceae A. L. deJussieu					
78	<i>Calamus rotang</i> L.	Chachibet	Nt	Domestic purposes	N (wild & cul)
79	<i>C. tenuis</i> Roxb.	Kejunibet (ctg)	Rattan	Domestic purposes	N (wild & cul)
30. Poaceae Barnhart					
80	<i>Bambusa balcooa</i> Roxb.	Borakbash	Bhalku Bamboo	Domestic purposes	N (cul)
81	<i>B. bambos</i> (L.) Voss	Bon Bans	Thorny Bamboo	Domestic purposes	A (cul)
82	<i>Gigantochloa andamanica</i> (Kurz) Kurz	Kalia Bans	Kali Bamboo	Domestic purposes	N (wild)
83	<i>Melocanna baccifera</i> (Roxb.) Kurz	Mulibash	Berry Bamboo	Domestic purposes	N (wild)
Gymnosperms					
31. Cycadaceae					
84	<i>Cycas pectinata</i> Griff.	Bankhejur	Assam Cycas	Ornamental (leaf)	N (wild & cul)

Herbs

SN	Scientific Name	Local Name	English Common Name	Uses	Status
Briophytes					
1. Marchantiaceae					
1	<i>Dumortiera hirsuta</i> (Sw) Bl. <i>et. Nees</i>	Nt	Hepatics	Nt	N (wild)
2	<i>Marchantia nepalensis</i> L. <i>et. L.</i>	Nt	Hepatics	Nt	N (wild)
2. Ricciaceae					
3	<i>Riccia bengalensis</i> Khan	Nt	Hepatics	Nt	N (wild)
Pteridophytes					
3. Adiantaceae (Presl) Ching					
4	<i>Adiantum philippense</i> L.	Biddapata	Maiden Hair Fern	Ornamental	N (wild)
4. Pteridaceae Ching					
5	<i>Pteris ensiformis</i> Burm.	Dhekia	Fern	Ornamental & Medicinal	N (wild)
6	<i>P. geminata</i> Wall.	Dhekia	Fern	Ornamental	N (cul)
7	<i>P. pellucida</i> Presl, Rel.	Dhekia	Fern	Ornamental	N (wild)
8	<i>P. vittata</i> L.	Dhekia	Fern	Chemical (arsenic) indicator from water	N (wild)
5. Selaginellaceae Willkom					
9	<i>Selaginella delicatula</i> (Desv. <i>ex Poir.</i>) Alston, J.	Nt	Delicate Spike Moss	Ornamental	N (wild)
6. Sinopteridaceae Koidzuni					
10	<i>Aleuritopteris albomarginata</i> (Clarke)	Rupali Dhekia	Silver Fern	Nt	N (wild)
11	<i>A. grisea</i> (Blanord)	Nt	Silver Fern	Nt	N (wild)
12	<i>Cheilanthes belangeri</i> (Bory) C.	Shada Dhekia	Silver Fern	Ornamental	N (wild)

Continued

7. Thelypteridaceae Ching (1970)					
13	<i>Ampelopteris prolifera</i> (Retz.) Copel.	Dhekia Shak	Walking Fern	Medicinal	N (wild)
14	<i>Christella crinipes</i> (Hook.) Holtt.	Bish Dhekia	Fern	Nt	N (wild)
15	<i>C. dentata</i> (Forssk.)	BishDhekia	Fern	Nt	N (wild)
Magnoliopsida (Dicotyledons)					
8. Amaranthaceae A. L. de Jussieu					
16	<i>Achyranthes aspera</i> L.	Apang	Red chaff Tree	Medicinal	N (wild)
9. Apiaceae Lindley					
17	<i>Centella asiatica</i> (L.) Urban	Thankuni	Indian Penny Wort	Medicinal	N (wild)
10. Asteraceae Dumortier					
18	<i>Chromolaena odorata</i> (L.) R.M.king & H.Rob	Assam Lata	Paraffin Weed	Medicinal	A (wild)
19*	<i>Enhydra fluctuans</i> Lour.	Helencha	Water cress	Medicinal	N (wild & cul)
11. Brassicaceae Burnett					
20	<i>Rorippa indica</i> (L.) Hiern	Bonsarisha	Indian Field Cress	Medicinal	N (wild)
12. Caricaceae Dumortier					
21	<i>Carica papaya</i> L.	Pepe	Papaya	Edible (fruit)	A (cul)
13. Convolvulaceae A. L. de Jussieu					
22*	<i>Ipomoea aquatica</i> Forssk	Kalmishak	Water spinach	Vegetable & medicinal	N (wild & cul)
14. Fabaceae Lindley					
23	<i>Vicia faba</i> L.	Sim	Faba Bean	Edible (fruit)	A (cul)
24	<i>Vigna unguiculata</i> (L.) Walp.	Borboti	Cowpea	Edible (seed)	A (cul)
15. Hydrophyllaceae R. Brown					
25*	<i>Hydrolea zeylanica</i> (L.) Vahl.	Paniagra	Water leaf	Fodder	N (wild)
16. Lamiaceae Lindley					
26	<i>Hyptis suaveolens</i> (L.) Poit.	Tokma	Hyptis	Medicinal	A (inv)
17. Polygonaceae R. Brown					
27*	<i>Persicaria barbata</i> (L.) Hara.	Bishkatali	Knotweed	Medicinal [29]	N (wild)
28*	<i>P. glabra</i> (Willd) Gomez de la Maza	Sada/Lal-Kukri	Smooth smartweed	Vegetables	N (wild)
18. Scrophulariaceae A. L. de Jussieu					
29*	<i>Limnophila aquatica</i> (Roxb.) Alston	Panikutra	Nt	Nt	N (wild)
19. Solanaceae A. L. de Jussieu					
30	<i>Capsicum frutescens</i> L.	Lankmorich	Spur Pepper	Edible (fruit)	A (cul)
31	<i>Solanum nigrum</i> L.	Futibegunn	Black Night	Medicinal	N (wild)
32	<i>S. torvum</i> Sw.	Tit begun	Cherry Egg Plant	Medicinal	A (cul)
Liliopsida (Monocotyledons)					
20. Araceae A. L. de Jussieu (1789)					
33	<i>Alocasia cucullata</i> (Lour.) G.Don	Biskachu	Chinese Taro	Nt	A (wild & cul)
34*	<i>Pistia stratiotes</i> L.	Topapana	Tropical duckweed	Medicinal [30]	N (wild)
21. Bromeliaceae					
35	<i>Ananus comosus</i> (L.) Merr.	Anaros	Paineapple	Edible (fruit)	A (cul)

Continued

22. Commelinaceae R. Brown					
36	<i>Commelinabenghalensis</i> L.	Dholpata	Bengal dayflower	Fodder	N (wild)
37	<i>C. diffusa</i> Burm. f.	Bat boittashak	Climbing dayflower	Vegetables	N (wild)
38	<i>C. paludosa</i> Blume	JataKanchira	Nt	Medicinal	N (wild)
39	<i>Cyanotis cristata</i> (L.) D. Don.	Nt	Nt	Vegetables	N (wild)
23. Cyperaceae A. L. de Jussieu					
40	<i>Actinoscirpus grossus</i>	Kesar	Giant Bulrush	Fodder	N (wild)
41	<i>Cyperus cuspidatus</i> Kunth	Sagarmukhi Methi	Flat-sedge	Fodder	N (wild)
42	<i>C. difformis</i> L.	Behua Ghasi	Variable Flat-sedge	Fodder	N (wild)
43	<i>C. digitatus</i> Roxb.	Hath Ghasi	Finger Flat-sedge	Fodder	N (wild)
44	<i>C. distans</i> L.f.	Pani Malanga	Slender Cyperus	Edible (rhizome)	N (wild)
45	<i>C. imbricatus</i> Retz.	Burethi	Single Flat-sedge	Medicinal	N (wild)
46	<i>C. javanicus</i> Houltt.	Java Ghasi	Javanese Flat-sedge	Nt	N (wild)
47	<i>C. rotandus</i> L.	Mutha	Nut Grass	Medicinal [31]	N (wild)
48	<i>Cyperus</i> sp.	Nt	Flat sedge	Fodder (weed)	N (wild)
49	<i>Hypolytrum nemorum</i> (Vahl) Spreng.	Trumram Ghasi	Nt	Fodder	N (wild)
50	<i>Kyllinga nemoralis</i> Dandy ex Hutch. & Dalziel	Subasinirbisa	Fragrant Spike-rush	Fodder	N (wild)
24. Hydrocharitaceae A. L. de Jussieu					
51*	<i>Hydrilla verticillata</i> (L.f.) Royle	Jhangi, Kanjal	Whorled leaved hydrilla	Medicinal [32]	N (wild)
25. Musaceae A. L. de Jussieu					
52	<i>Musa acuminata</i> Colla	Phahari Kola	Dwarf Cavendish	Edible	A (wild)
53	<i>M. paradisiaca</i> L.	Bichi Kola	Plantain	Edible (fruit)	N (cul)
26. Orchidaceae					
54	<i>Peristylus constrictus</i> (Lindl.) Lindl	Bhuinora	Nt	Medicinal	N (wild)
27. Pontederiaceae Kunth					
55*	<i>Eichhornia crassipes</i> (Mart.) Solms	Pana	Water hyacinth	Nt	A (wild)
28. Poaceae Barnhart					
56	<i>Arthraxon nudus</i> (Steud.) Hochst	Gandha Bena	Nt	Fodder	N (wild)
57	<i>Brachiaria ramosa</i> (L.) Stapf	Jhopa Ghas	Nt	Fodder	N (wild)
58	<i>Pseudechinolaena polystachya</i> (H. B. & K.) Stapf	Lina Ghas	Nt	Fodder	N (wild)
59	<i>Saccharum arundinaceum</i> Retz.	Teng	Pin reed grass	Medicinal [33]	N (wild)
60	<i>S. spontaneum</i> L.	Kash	Wild Sugarcane	Fodder	N (wild)
61	<i>Pogonatherum paniceum</i> (Lam.) Hack.	Khudi Bansh	Dwarf Bamboo	Ornamental	N (wild)
29. Zingiberaceae Lindley					
62	<i>Alpinia conchigera</i> Griff.	Khetranga	Nt	Medicinal	N (wild)
63	<i>A. galanga</i> (L.) Willd.	Sugondha Botch	Greater Galgngal	Medicinal	N (wild)
64	<i>A. malaccensis</i> (Burm.f.) Roscoe	Deotara (Ctg)., Amla Elach	Nt	Medicinal	N (wild)
65	<i>Curcuma amada</i> Roxb.	Amada	Nt	Medicinal	N (cul)
66	<i>C. aromatica</i> Salisb.	Bon Holud	Cochin Tumeric	Medicinal	N (cul)

Climbers

SN	Scientific Name	Local Name	English Name	Use	Status
Pteridophytes					
1. Lygodiaceae Presl					
1	<i>Lygodium flexuosum</i> (L.)	LataDhekia	Climbing Fern	Medicinal	N (wild)
2	<i>L. giganteum</i> Tagawa	LataDhekia	Climbing Fern	Ornamental	N (wild)
3	<i>L. microphyllum</i> (Cav.) R. Br.	LataDhekia	Climbing Fern	Vegetables & Medicinal	N (wild)
Magnoliopsida (Dicotyledons)					
2. Acanthaceae A. L. de Jussieu					
4	<i>Thunbergia grandiflora</i> Roxb.	Bans Lata	Blue Trumpet Vine	Medicinal	N (wild)
3. Asteraceae Dumortier					
5	<i>Mikania micrantha</i> Kunth	Asamlata	Climbing Hemp Weed	Medicinal	A (inv)
4. Convolvulaceae A. L. de Jussieu					
6	<i>Ipomoea maxima</i> (L.f.) D. Don ex Sweet.	Boro Kalmi	Nt	Medicinal	N (wild)
7	<i>Merremia umbellata</i> (L.) Hallier f.	Sada Kolmi	Nt	Medicinal	N (wild)
5. Cucurbitaceae A. L. de Jussieu					
8	<i>Coccinia grandis</i> (L.) Voigt	Telakucha	Ivy Gouard	Medicinal	A (wild)
6. Fabaceae Lindley					
9	<i>Abrus precatorius</i> L.	Kunch	Indian Liquorice	Medicinal	N (wild)
10	<i>Pueraria tuberosa</i> (Willd.) DC.	Gola Kunch	Nt	Medicinal	N (wild)
7. Piperaceae C. A. Agardh					
11	<i>Piper betle</i> L.	Pan	Betel Piper	Edible	A (cul)
12	<i>P. boehmeriaefolium</i> Wall.	Boyemarich	Nt	Medicinal	N (wild)
13	<i>P. longum</i> L.	Pipul Morich	Log Pepper	Medicinal	N (cul)
Liliopsida (Monocotyledons)					
8. Dioscoreaceae R. Brown					
14	<i>Dioscorea glabra</i> Roxb.	Shora Alu	Nt	Edible (Rhizom)	N (cul)
15	<i>D. pentaphylla</i> L.	Jhum Alu	Yam	Medicinal	N (cul)

Note: * = Aquatic, A (cul)—Alien (cultivated), A (inv)—Alien (invasive), A (wild)—Alien (wild), A (wild & cul)—Alien (wild & cultivated), D—Dicot, M—Monocot, N (cul)—Native (cultivated), N (wild)—Native (wild) and Nt—Not Known.