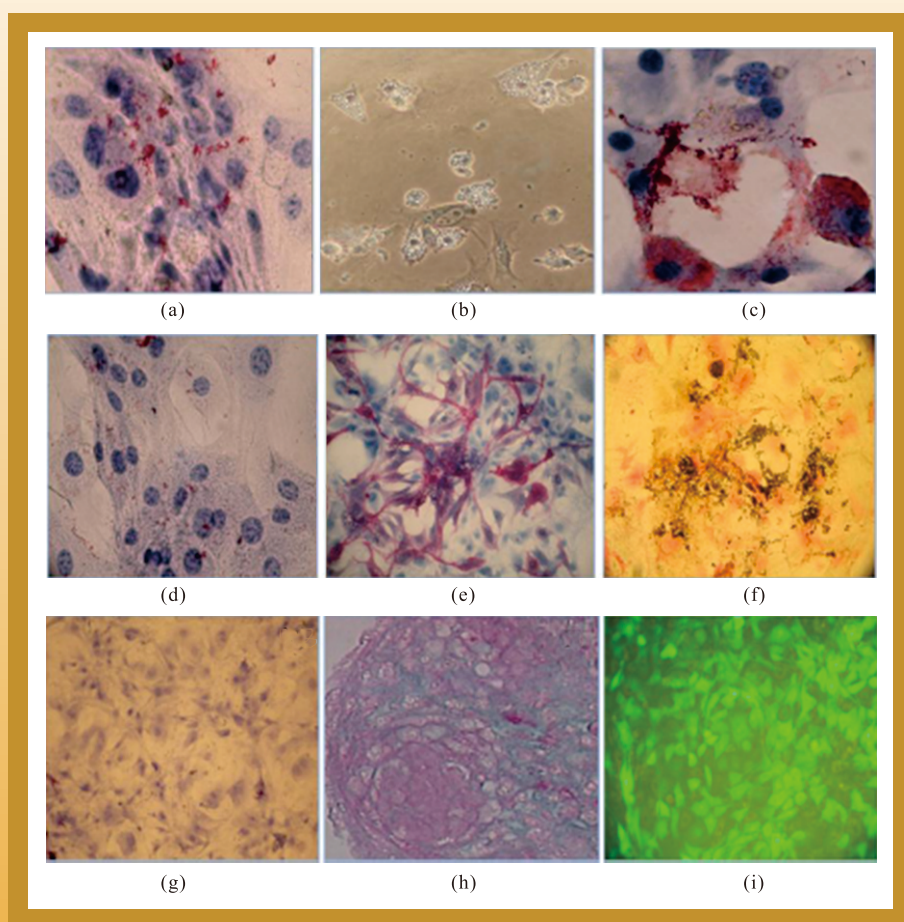




Stem Cell Discovery



Journal Editorial Board

ISSN: 2161-6760 (Print) ISSN: 2161-6787 (Online)

<http://www.scirp.org/journal/scd>

Editor in Chief

Dr. Ming Zhan

Methodist Hospital Research Institute, USA

Editorial Board (According to Alphabet)

Dr. Fahd Al-Mulla

Kuwait University, Kuwait

Prof. Sayed Amin Mohamed Amer

Cairo University, Egypt

Dr. Anand Anbarasu

VIT University, India

Prof. Jean-François Beaulieu

Université de Sherbrooke, Canada

Dr. Kenneth Richard Boheler

National Institutes of Health, USA

Dr. Dean J. Burkin

University of Nevada School of Medicine, USA

Dr. Arvind Chhabra

University of Connecticut Health Center, USA

Dr. Robert Paul Coppes

University of Groningen, Netherlands

Prof. Francesco Filippini

University of Padua, Italy

Dr. Nicholas R. Forsyth

Keele University Medical School, UK

Dr. Umberto Galderisi

Second University of Napoli, Italy

Dr. Jian-Xin Gao

The Ohio State University, USA

Dr. Pantelis Georgiades

University of Cyprus, Cyprus

Prof. Antonio Giordano

University of Siena, Italy

Dr. Jonathan R. Keller

National Cancer Institute-NIH, USA

Dr. Hitoshi Komuro

Lerner Research Institute, USA

Prof. Jong Eun Lee

Yonsei University, Korea (South)

Dr. Anskar Yu-Hung Leung

The University of Hong Kong, Hong Kong (China)

Dr. Yonghe Li

Southern Research Institute, USA

Dr. Didier Merlin

Emory University, USA

Dr. Eran Meshorer

The Hebrew University of Jerusalem, Israel

Dr. Chiara Mondello

Institute of Molecular Genetics, Italy

Prof. Tarik Möröy

Université de Montréal, Canada

Dr. Janet L. Paluh

College of Nanoscale Science and Engineering, USA

Dr. Cesare Patrone

Karolinska Institute, Sweden

Dr. Elias A. Said

Montreal University, Canada

Prof. Åke Sjöholm

Karolinska Institute, Sweden

Prof. Jin Tao

Soochow University, China

Dr. Stavros Taraviras

University of Patras, Greece

Dr. Christian Templin

University Hospital Zürich, Switzerland

Prof. Marta Tesone

University of Buenos Aires, Argentina

Dr. Kohichiro Tsuji

University of Tokyo, Japan

Dr. Yigang Wang

University of Cincinnati, USA

Prof. Guozhi Xiao

University of Pittsburgh School of Medicine, USA

Prof. Masayoshi Yamaguchi

Emory University School of Medicine, USA

Editorial Assistants

Alline Xiao

Scientific Research Publishing, USA Email: scd@scirp.org

TABLE OF CONTENTS

Volume 2, Number 1, January 2012

Molecular confirmation of CHARGE syndrome from umbilical cord blood stem cells from a deceased newborn and identification of a new mutation in the exon 29 of the *CHD7* gene

N. Montano, A. Quadrelli, A. Milunsky, A. Vaglio, R. Quadrelli.....1

Characterization of a mesenchymal stem cell line that differentiates to bone and provides niches supporting mouse and human hematopoietic stem cells

S. R. Tuljapurkar, J. D. Jackson, S. K. Brusnahan, B. J. O’Kane, J. G. Sharp.....5

Defining umbilical cord blood stem cells

H. Ali, F. Al-Mulla.....15

The figure on the front cover is from the article published in Stem Cell Discovery, 2012, Vol. 2, No. 1, pp. 5-14 by Sonal R. Tuljapurkar, John D. Jackson, Susan K. Brusnahan, Barbara J. O’Kane and John G. Sharp.

Stem Cell Discovery (SCD)

Journal Information

SUBSCRIPTIONS

The *Stem Cell Discovery* (Online at Scientific Research Publishing, www.SciRP.org) is published quarterly by Scientific Research Publishing, Inc., USA.

Subscription rates:

Print: \$39 per issue.

To subscribe, please contact Journals Subscriptions Department, E-mail: sub@scirp.org

SERVICES

Advertisements

Advertisement Sales Department, E-mail: service@scirp.org

Reprints (minimum quantity 100 copies)

Reprints Co-ordinator, Scientific Research Publishing, Inc., USA.

E-mail: sub@scirp.org

COPYRIGHT

Copyright©2012 Scientific Research Publishing, Inc.

All Rights Reserved. No part of this publication may be reproduced, stored in a retrieval system, or transmitted, in any form or by any means, electronic, mechanical, photocopying, recording, scanning or otherwise, except as described below, without the permission in writing of the Publisher.

Copying of articles is not permitted except for personal and internal use, to the extent permitted by national copyright law, or under the terms of a license issued by the national Reproduction Rights Organization.

Requests for permission for other kinds of copying, such as copying for general distribution, for advertising or promotional purposes, for creating new collective works or for resale, and other enquiries should be addressed to the Publisher.

Statements and opinions expressed in the articles and communications are those of the individual contributors and not the statements and opinion of Scientific Research Publishing, Inc. We assume no responsibility or liability for any damage or injury to persons or property arising out of the use of any materials, instructions, methods or ideas contained herein. We expressly disclaim any implied warranties of merchantability or fitness for a particular purpose. If expert assistance is required, the services of a competent professional person should be sought.

PRODUCTION INFORMATION

For manuscripts that have been accepted for publication, please contact:

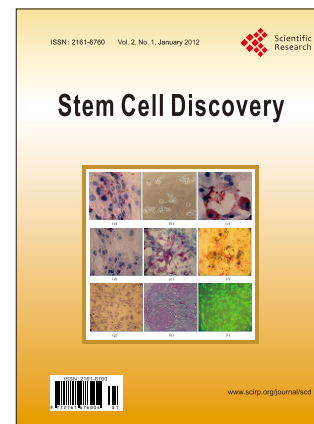
E-mail: scd@scirp.org

Call for Papers

Stem Cell Discovery

ISSN 2161-6760 (Print) ISSN 2161-6787 (Online)

<http://www.scirp.org/journal/scd>



Stem Cell Discovery (SCD) is an international journal dedicated to the latest advancement of stem cell discovery. The goal of this journal is to provide a platform for scientists and academicians all over the world to promote, share, and discuss various new issues and developments in different areas of stem cell discovery. All manuscripts must be prepared in English, and are subject to a rigorous and fair peer-review process. Accepted papers will immediately appear online followed by printed hard copy.

Editor in Chief

Dr. Ming Zhan

Methodist Hospital Research Institute, USA

Editorial Board

Dr. Fahd Al-Mulla
Prof. Sayed Amin Mohamed Amer
Dr. Anand Anbarasu
Prof. Jean-François Beaulieu
Dr. Kenneth Richard Boheler
Dr. Dean J. Burkin
Dr. Arvind Chhabra
Dr. Robert Paul Coppes
Prof. Francesco Filippini
Dr. Nicholas R. Forsyth
Dr. Umberto Galderisi
Dr. Jian-Xin Gao

Dr. Pantelis Georgiades
Prof. Antonio Giordano
Dr. Jonathan R. Keller
Dr. Hitoshi Komuro
Prof. Jong Eun Lee
Dr. Anskar Yu-Hung Leung
Dr. Yonghe Li
Dr. Didier Merlin
Dr. Eran Meshorer
Dr. Chiara Mondello
Prof. Tarik Möröy
Dr. Janet L. Paluh

Dr. Cesare Patrone
Dr. Elias A. Said
Prof. Åke Sjöholm
Prof. Jin Tao
Dr. Stavros Taraviras
Dr. Christian Templin
Prof. Marta Tesone
Dr. Kohichiro Tsuji
Dr. Yigang Wang
Prof. Guozhi Xiao
Prof. Masayoshi Yamaguchi

Stem Cell Discovery, a peer reviewed journal, provides a forum for prompt publication of original investigative papers and concise reviews. It will include all the primary discoveries from stem cell basic and translational research, specifically including the fields but not limited as the follows:

a) Fields:

- Stem Cell and Diseases
- Stem Cell Development and Differentiation
- Stem Cell Therapy
- Tissue Regeneration

b) All types of stem cells: Adult Tissue Stem Cells (ATSC); Embryonic Stem Cells (ESC); Germline Stem Cells (GSC); Inducible Stem Cells (ISC).

c) Various organisms: from insects to mammalian We are also interested in: 1) Short reports—2-5 page papers where an author can either present an idea with theoretical background but has not yet completed the research needed for a complete paper or preliminary data; 2) Book reviews—Comments and critiques.

Notes for Intending Authors

Submitted papers should not be previously published nor be currently under consideration for publication elsewhere. Paper submission will be handled electronically through the website. For more details, please access the website.

Website and E-Mail

<http://www.scirp.org/journal/scd>

E-mail: scd@scirp.org

TABLE OF CONTENTS

Volume 2 Number 1

January 2012

Molecular confirmation of CHARGE syndrome from umbilical cord blood stem cells from a deceased newborn and identification of a new mutation in the exon 29 of the *CHD7* gene

N. Montano, A. Quadrelli, A. Milunsky, A. Vaglio, R. Quadrelli 1

Characterization of a mesenchymal stem cell line that differentiates to bone and provides niches supporting mouse and human hematopoietic stem cells

S. R. Tuljapurkar, J. D. Jackson, S. K. Brusnahan, B. J. O’Kane, J. G. Sharp 5

Defining umbilical cord blood stem cells

H. Ali, F. Al-Mulla 15