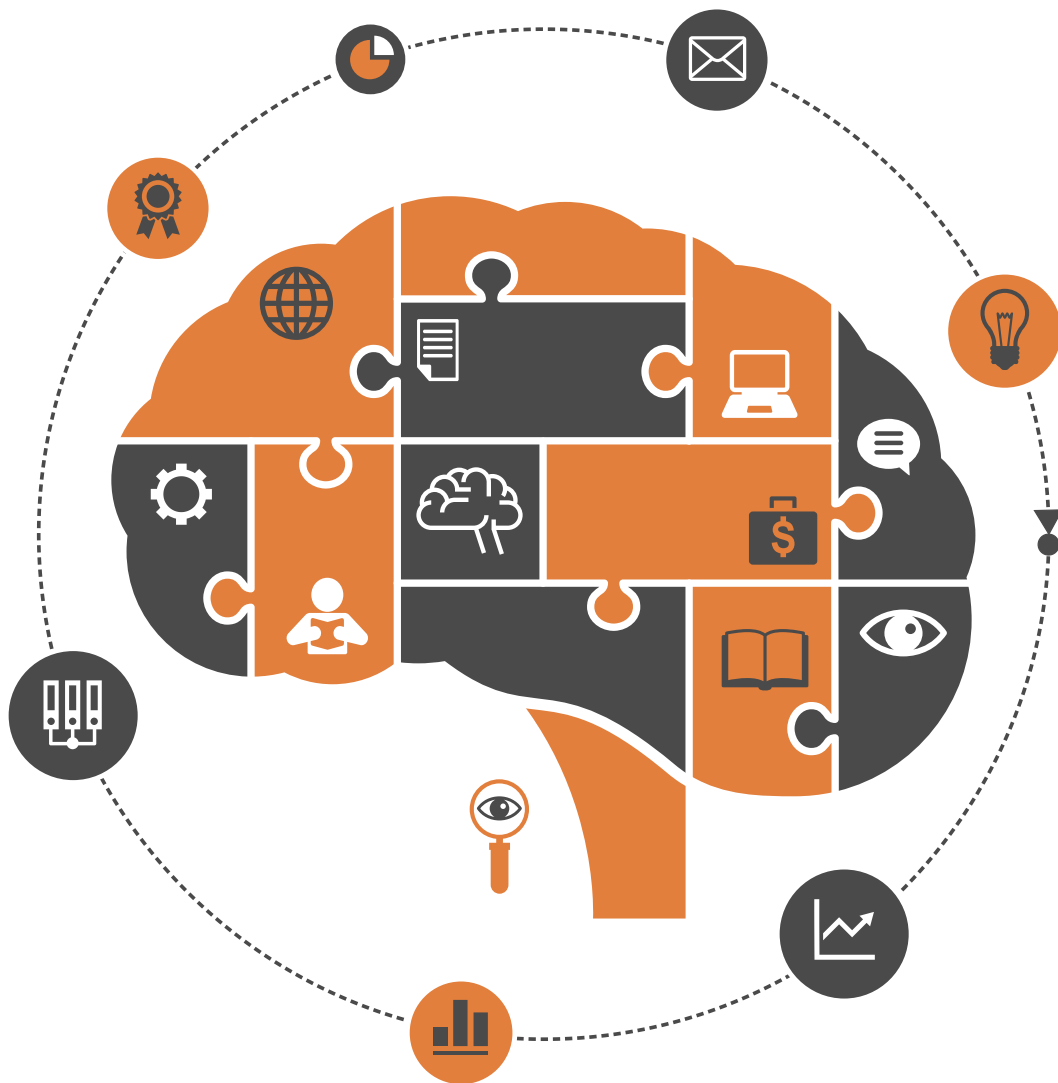


ISSN: 2152-7180

Volume 14, Number 2, February 2023



# Psychology



ISSN: 2152-7180



9 772152 718003 02

<https://www.scirp.org/journal/psych>

# Journal Editorial Board

ISSN Print: 2152-7180 ISSN Online: 2152-7199

<https://www.scirp.org/journal/psych>

---

## Editorial Board

<b>Dr. Ruggero Andrisano-Ruggieri</b>	University of Salerno, Italy
<b>Dr. Margarita Bakracheva</b>	Sofia University St. Kliment Ohridski, Bulgaria
<b>Dr. Yoram Bar-Tal</b>	Tel-Aviv University, Israel
<b>Prof. Adital Ben-Ari</b>	University of Haifa, Israel
<b>Prof. Sefa Bulut</b>	Ibn Haldun University, Türkiye
<b>Dr. Mento Carmela</b>	University of Messina, Italy
<b>Prof. Giuliana Galli Carminati</b>	International Institute for Psychoanalysis Charles Baudouin, Switzerland
<b>Prof. M. Diane Clark</b>	Lamar University, USA
<b>Prof. Sonali De</b>	University of Calcutta, India
<b>Prof. María Leticia Bautista Díaz</b>	National Autonomous University of Mexico, Mexico
<b>Dr. Thomas Vincent Frederick</b>	California Baptist University, USA
<b>Dr. Michael Galanakis</b>	Hellenic Open University, Greece
<b>Dr. Florim Gallopeni</b>	Heimerer College, Albania
<b>Prof. George Kyriacou Georgiou</b>	University of Alberta, Canada
<b>Dr. Hong Jiao</b>	University of Maryland, USA
<b>Dr. Michelle Y. Kibby</b>	Southern Illinois University, USA
<b>Prof. Kenneth A. Kiewra</b>	University of Nebraska-Lincoln, USA
<b>Prof. Beth Kurtz-Costes</b>	University of North Carolina, USA
<b>Prof. Giovanni Laviola</b>	Italian National Institute of Health, Italy
<b>Prof. Yang Lee</b>	Gyeongsang National University, South Korea
<b>Dr. Katerina Maniadaki</b>	Technological Educational Institution, Greece
<b>Dr. James M. McKivigan</b>	Touro University Nevada, USA
<b>Prof. Tim F. McLaughlin</b>	Gonzaga University, USA
<b>Dr. Melodee Mograss</b>	McGill University, Canada
<b>Prof. Ora Nakash</b>	Smith College, Israel
<b>Dr. Raffaella Nori</b>	University of Bologna, Italy
<b>Prof. Benjamin Oluwabunmi Omolayo</b>	Federal University, Nigeria
<b>Dr. Jennifer Kim Plybon Penberthy</b>	University of Virginia School of Medicine, USA
<b>Dr. Andrea Peru</b>	University of Firenze, Italy
<b>Dr. Nora Rangel</b>	University of Guadalajara, Mexico
<b>Dr. So-Jung Seo</b>	Kyung Hee University, South Korea
<b>Prof. Hanaa A. M. Shuwaikh</b>	Fayoum University, Egypt
<b>Dr. Luísa Soares</b>	University of Madeira, Portugal
<b>Dr. Soyibjon Tajibaev</b>	Uzbek State University, Uzbekistan
<b>Prof. Tuomo Antero Takala</b>	University of Jyväskylä, Finland
<b>Dr. Kasım Tatlıhoğlu</b>	Bingöl University, Türkiye
<b>Dr. Svetlana Usca</b>	Rezekne Academy of Technologies, Latvia
<b>Prof. Massimiliano Versace</b>	Boston University, USA
<b>Prof. Edda Weigand</b>	University of Münster, Germany
<b>Dr. Patricia Gail Williams</b>	University of Louisville, USA
<b>Dr. Hui-Ching Wu</b>	National Taiwan University, Chinese Taipei
<b>Prof. Wengang Yin</b>	Chinese Academy of Sciences, China
<b>Prof. Samah Khaled Zahran</b>	Women College, Ain Shams University, Egypt

# Table of Contents

**Volume 14    Number 2**

**February 2023**

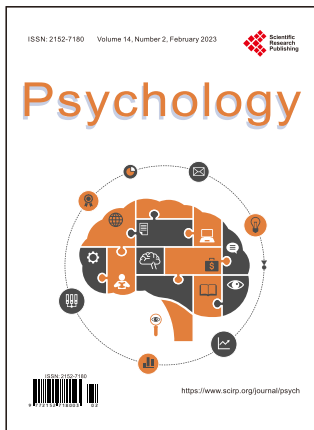
<b>Prejudice as a Concurrent Stimulus for Violence: A Case of an Asian Community</b>	
A. Fenteng .....	127
<b>Who Are You to Judge? Investigating Narcissism through Pupil Dilation at Witness Testimonials</b>	
A. C. Stausberg .....	144
<b>Exploring Emotional Intelligence and Thinking Style in Saudi Residents: A Cross-Sectional Study</b>	
A. O. Bataweel, M. G. M. Ahmed .....	158
<b>The Mediating Role of Peer Pressure on the Relationship between Teachers Students Interaction and Students Academic Achievement of Wolaita Sodo University Students</b>	
B. M. Gebresilase, W. Zhao .....	181
<b>The Relationship of Health Locus of Control and Psychological Distress in Lung Cancer Patients during the COVID-19 Pandemic</b>	
F. Anagnosti, G. Hardavella, D. Lekka, D. Darahani, F. Anthonli-Anagnostopoulou, P. Papagiorgis, D. Chaniotis, I. Karakasidou, N. Thalassinou.....	201
<b>Associations of Symptom Severity of Mentally Ill Parents on Family Functioning and Children’s Mental Health</b>	
T. Elbracht, M. Busmann, B. Adema, A. Daubmann, R. Kilian, S. Winter, M. Lambert, K. Wegscheider, S. Wiegand-Grefe.....	213
<b>An Empirical Approach of Positive Psychology Cap in Hospitality in Greece</b>	
E. Karakasidou, C. Anastasiadou, K. Pandoulia, A. Stalikas.....	231
<b>An Exploration into New Approaches in the Treatment of Mental Health: Understanding and Possible Optimization in the Implementation of Accelerated Experiential Dynamic Psychotherapy (AEDP)</b>	
Z. Y. Su .....	240
<b>Heuristics, Biases and the Psychology of Reasoning: State of the Art</b>	
M. Martín, M. D. Valiña.....	264

**The Relationships between Emotion, Sense of Coherence, Social Rhythm and Positive Mental Health in Chinese University Students during COVID-19**

W. J. Zhang, L. Y. Ding, J. Yin, W. W. Song ..... 295

**Pathological Affective Dependence (PAD) as an Antecedent of Intimate Partner Violence (IPV): A Pilot Study of PAD's Cognitive Model on a Sample of IPV Victims**

E. Pugliese, O. Mosca, A. M. Saliani, F. Maricchiolo, T. Vigilante, F. Bonina, E. Cellitti, M. G. F. Barbaro, M. Goffredo, P. Lioce, E. Orsini, C. Quintavalle, S. Rienzi, A. Vargiu, F. Mancini ..... 305



Call for Papers

# Psychology (PSYCH)

ISSN Print: 2152-7180 ISSN Online: 2152-7199

<https://www.scirp.org/journal/psych>

---

PSYCH is an international refereed journal dedicated to the latest advancements in Psychology. The goal of this journal is to keep a record of the state-of-the-art research and promote the research work in these fast moving areas.

---

## Subject Coverage

This journal invites original research and review papers that address the following issues in Psychology. Topics of interest include, but are not limited to:

Anomalistic Psychology	Military Psychology
Behavioral Psychology	National Psychology
Biological Basis of Behavior	Neuropsychology
Clinical Psychology	Political Psychology
Cognitive Psychology	Professional Practice
Counseling Psychology	Psychological Assessment and Evaluation
Cultural Psychology	Psychology of Art
Economic Psychology	Psychology of Religion
Educational Psychology	Psychotherapy
Engineering Psychology	Safety Psychology
Environmental Psychology	School Psychology
Ethics in Psychology	Scientific Psychology
Family Psychology and Couples Psychology	Social Psychology
Forensic Psychology	Sport Psychology
Gerontology	Traffic Psychology
Health Psychology	Work, Industrial and Organizational Psychology
Intelligence Psychology	Others
Managerial and Leadership Psychology	

We are also interested in short papers (letters) that clearly address a specific problem, and short survey or position papers that sketch the results or problems on a specific topic. Authors of selected short papers would be invited to write a regular paper on the same topic for future issues of the **PSYCH**.

## Notes for Intending Authors

---

Submitted papers should not have been previously published nor be currently under consideration for publication elsewhere. Paper submission will be handled electronically through the website. All papers are refereed through a peer review process. For more details about the submissions, please access the website.

---

## Website and E-Mail

<https://www.scirp.org/journal/psych>

E-mail: [psych@scirp.org](mailto:psych@scirp.org)

## ***What is SCIRP?***

Scientific Research Publishing (SCIRP) is one of the largest Open Access journal publishers. It is currently publishing more than 200 open access, online, peer-reviewed journals covering a wide range of academic disciplines. SCIRP serves the worldwide academic communities and contributes to the progress and application of science with its publication.

## ***What is Open Access?***

All original research papers published by SCIRP are made freely and permanently accessible online immediately upon publication. To be able to provide open access journals, SCIRP defrays operation costs from authors and subscription charges only for its printed version. Open access publishing allows an immediate, worldwide, barrier-free, open access to the full text of research papers, which is in the best interests of the scientific community.

- High visibility for maximum global exposure with open access publishing model
- Rigorous peer review of research papers
- Prompt faster publication with less cost
- Guaranteed targeted, multidisciplinary audience



**Scientific  
Research  
Publishing**

**Website: <https://www.scirp.org>**

**Subscription: [sub@scirp.org](mailto:sub@scirp.org)**

**Advertisement: [service@scirp.org](mailto:service@scirp.org)**