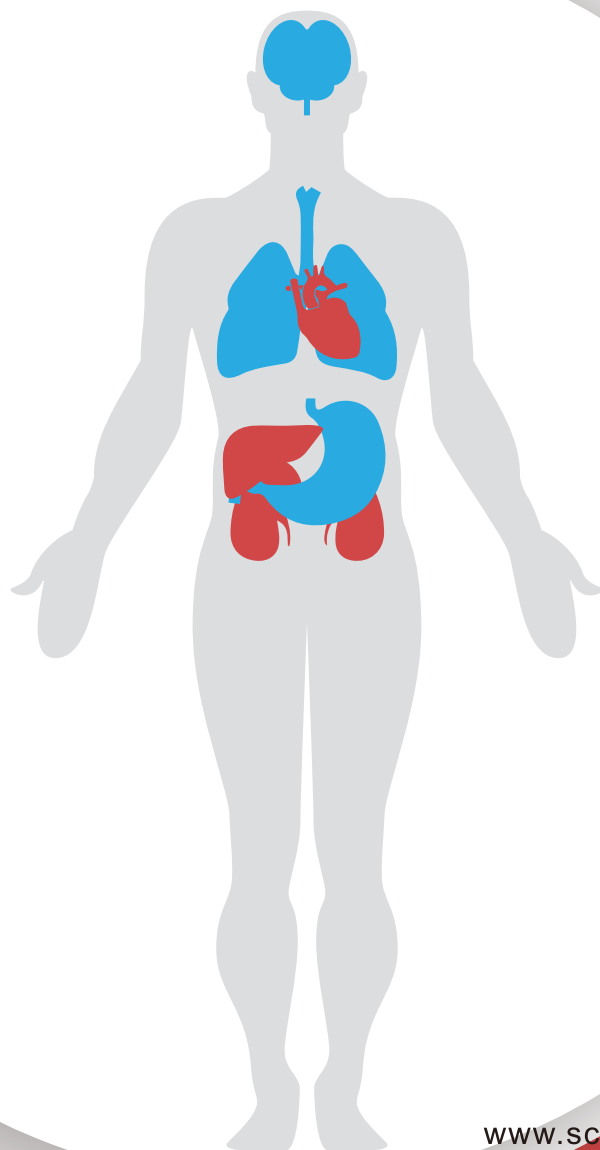


ISSN: 2165-7424 Volume 4, Number 9, September 2014



Open Journal of Endocrine and Metabolic Diseases



ISSN: 2165-7424



www.scirp.org/journal/ojemd

Journal Editorial Board

ISSN Print: 2165-7424 ISSN Online: 2165-7432

<http://www.scirp.org/journal/ojemd>

Editor-in-Chief

Prof. Yuh-Min Song

Taichung Veterans General Hospital, Chinese Taipei

Editorial Board

Prof. Khalid Esmat Allam

Ainshams University, Egypt

Prof. Belinda R. Beck

Griffith University, Australia

Dr. Huan Cai

Metabolism Unit/Diabetes Section, Laboratory of
Clinical Investigation, National Institute on
Aging/National Institutes of Health, USA

Dr. Chong-Chi Chiu

Chi-Mei Medical Center, Chinese Taipei

Prof. Fernando Cordido

University of A Coruña, Spain

Dr. Zhongquan Dai

China Astronaut Research and Training Center, China

Prof. Daniel Y. C. Fung

Kansas State University, USA

Dr. Sanjay K. Gupta

Sebha University, Libya

Dr. Arumugam R. Jayakumar

University of Miami, USA

Dr. Li Ji

State University of New York, USA

Dr. Udaya M. Kabadi

VA Medical Center, USA

Prof. Mehtap Malkoç

Dokuz Eylul University, Turkey

Prof. Mohammad R. Movahed

University of Arizona College of Medicine, USA

Prof. Kei Nakajima

Josai University, Japan

Dr. Khue Vu Nguyen

University of California, USA

Prof. Lawrence C. Perlmutter

Rosalind Franklin University of Medicine, USA

Dr. Wen-Jun Shen

Stanford University, USA

Dr. Weiwei Song

Temple University School of Medicine, USA

Dr. Daniel Umpierre

Federal University of Rio Grande do Sul, Brazil

Table of Contents

Volume 4 Number 9

September 2014

Determinants of Health-Promoting Behaviors among Type 2 Diabetic Patients: Voice of Iran

A. Tol, B. Mohebbi, R. Sadeghi, A. B. Maheri, M. R. Eshraghian.....219

Open Journal of Endocrine and Metabolic Diseases (OJEMD)

Journal Information

SUBSCRIPTIONS

Open Journal of Endocrine and Metabolic Diseases (Online at Scientific Research Publishing, www.SciRP.org) is published monthly by Scientific Research Publishing, Inc., USA.

Subscription rates:

Print: \$79 per issue.

To subscribe, please contact Journals Subscriptions Department, E-mail: sub@scirp.org

SERVICES

Advertisements

Advertisement Sales Department, E-mail: service@scirp.org

Reprints (minimum quantity 100 copies)

Reprints Co-ordinator, Scientific Research Publishing, Inc., USA.

E-mail: sub@scirp.org

COPYRIGHT

COPYRIGHT AND REUSE RIGHTS FOR THE FRONT MATTER OF THE JOURNAL:

Copyright © 2014 by Scientific Research Publishing Inc.

This work is licensed under the Creative Commons Attribution International License (CC BY).

<http://creativecommons.org/licenses/by/4.0/>

COPYRIGHT FOR INDIVIDUAL PAPERS OF THE JOURNAL:

Copyright © 2014 by author(s) and Scientific Research Publishing Inc.

REUSE RIGHTS FOR INDIVIDUAL PAPERS:

Note: At SCIRP authors can choose between CC BY and CC BY-NC. Please consult each paper for its reuse rights.

DISCLAIMER OF LIABILITY

Statements and opinions expressed in the articles and communications are those of the individual contributors and not the statements and opinion of Scientific Research Publishing, Inc. We assume no responsibility or liability for any damage or injury to persons or property arising out of the use of any materials, instructions, methods or ideas contained herein. We expressly disclaim any implied warranties of merchantability or fitness for a particular purpose. If expert assistance is required, the services of a competent professional person should be sought.

PRODUCTION INFORMATION

For manuscripts that have been accepted for publication, please contact:

E-mail: ojemd@scirp.org



Open Journal of Endocrine and Metabolic Diseases

ISSN 2165-7424 (Print) ISSN 2165-7432 (Online)

<http://www.scirp.org/journal/ojemd>

Open Journal of Endocrine and Metabolic Diseases (OJEMD) is an international journal dedicated to the latest advancement of endocrine and metabolic diseases. The goal of this journal is to provide a platform for scientists and academicians all over the world to promote, share, and discuss various new issues and developments in different areas of endocrine and metabolic diseases.

Editorial Board

Prof. Khalid Esmat Allam
Prof. Belinda R. Beck
Dr. Huan Cai

Dr. Chong-Chi Chiu
Prof. Fernando Cordido
Dr. Zhongquan Dai
Prof. Daniel Y. C. Fung
Dr. Sanjay K. Gupta
Dr. Arumugam R. Jayakumar
Dr. Li Ji
Dr. Udaya M. Kabadi
Prof. Mehtap Malkoç
Prof. Mohammad R. Movahed
Prof. Kei Nakajima
Dr. Khue Vu Nguyen
Prof. Lawrence C. Perlmuter
Dr. Wen-Jun Shen
Dr. Weiwei Song
Dr. Daniel Umpierre

Ainshams University, Egypt
Griffith University, Australia
Metabolism Unit/Diabetes Section, Laboratory of Clinical Investigation,
National Institute on Aging/National Institutes of Health, USA
Chi-Mei Medical Center, Chinese Taipei
University of A Coruña, Spain
China Astronaut Research and Training Center, China
Kansas State University, USA
Sebha University, Libya
University of Miami, USA
State University of New York, USA
VA Medical Center, USA
Dokuz Eylul University, Turkey
University of Arizona College of Medicine, USA
Josai University, Japan
University of California, USA
Rosalind Franklin University of Medicine, USA
Stanford University, USA
Temple University School of Medicine, USA
Federal University of Rio Grande do Sul, Brazil

All manuscripts must be prepared in English, and are subject to a rigorous and fair peer-review process. Accepted papers will immediately appear online followed by printed hard copy. The journal publishes original papers including but not limited to the following fields:

- Bone and Mineral Metabolism
- Cell Metabolism
- Clinical Endocrinology
- Clinical Nutrition and Metabolism
- Dermato-Endocrinology
- Diabetes Mellitus
- Diabetes, Obesity and Metabolism
- Diabetology and Metabolic Syndrome
- Diseases of the Pancreas
- Drug Metabolism & Toxicology
- Endocrine & Metabolic Disorders
- Endocrine Disorders
- Endocrine Pathology
- Inherited Metabolic Disease
- Metabolic Brain Disease
- Metabolic Engineering
- Metabolomics
- Molecular and Cellular Endocrinology
- Molecular Genetics and Metabolism
- Neuroendocrinology
- Nutrition, Metabolism and Cardiovascular Diseases
- Pediatric Endocrinology
- Psychoneuroendocrinology
- Reproductive Biology and Endocrinology

We are also interested in: 1) Short reports—2-5 page papers where an author can either present an idea with theoretical background but has not yet completed the research needed for a complete paper or preliminary data; 2) Book reviews—Comments and critiques.

Website and E-mail

<http://www.scirp.org/journal/ojemd>

E-mail: ojemd@scirp.org