

Equidistribution in Sharing Games

Carlos D'Andrea¹, Emiliano Gómez²

¹Departament d'Àlgebra i Geometria, Universitat de Barcelona, Barcelona, Spain

²Department of Mathematics, University of California, Berkeley, Berkeley, USA

Email: cdandrea@ub.edu, emgomez@math.berkeley.edu

Received August 30, 2013; revised September 25, 2013; accepted October 12, 2013

Copyright © 2014 Carlos D'Andrea, Emiliano Gómez. This is an open access article distributed under the Creative Commons Attribution License, which permits unrestricted use, distribution, and reproduction in any medium, provided the original work is properly cited. In accordance of the Creative Commons Attribution License all Copyrights © 2014 are reserved for SCIRP and the owner of the intellectual property Carlos D'Andrea, Emiliano Gómez. All Copyright © 2014 are guarded by law and by SCIRP as a guardian.

ABSTRACT

Games often provide a good introduction to interesting phenomena in mathematics. In this note, we examine three variations of an iterative sharing game played around a circular (or not so circular) table. More precisely, for each variation, we study the tendency toward equal distribution among the players. In the first variation, the players have discrete amounts at each step. The second variation removes this restriction, and the third one considers an infinitely long table with an infinite number of players.

KEYWORDS

Equidistribution; Iteration; Linear Transformation; Limit Distribution

1. Sharing around a Table with Discrete Amounts

Suppose you have n persons seated around a circular table, each having an even number of dimes. Number them from 1 to n counterclockwise, and denote by a_i the (even) number of dimes that the i -th person has, $i = 1, \dots, n$.

The game is played by repeating the same two steps over and over, as follows: first, each person gives one half of her dimes to the person sitting on her right. In symbols,

$$\frac{a_i}{2} + \frac{a_{i-1}}{2} \rightarrow a_i, \quad i = 1, \dots, n, \quad (1)$$

with the convention $a_0 = a_n$. Note that the new a_i 's are not all necessarily even. The second step, which allows us to repeat (1), is to add one dime to each odd a_i :

$$a_i + \frac{1 - (-1)^{a_i}}{2} \rightarrow a_i, \quad i = 1, \dots, n. \quad (2)$$

We call this game the “discrete sharing game”.

Proposition 1.1 *By iterating (1) and (2), after a finite number of steps, we will have $a_1 = a_2 = \dots = a_n$, i.e. every person ends up with the same number of dimes.*

This problem can be found in [1]. The proof follows easily from two observations. First, the maximum amount around the table cannot increase, nor can the minimum amount decrease. Second, if the minimum amount is strictly smaller than the maximum amount, then after the next step, either the minimum amount will have increased, or else the number of players having the minimum amount will have decreased. Together, these observations imply that after finitely many steps, the maximum and minimum amounts will coincide. We leave the details of the proof to the reader. Another interesting problem is to determine the number of iterations needed to reach equidistribution in terms of the initial data (see **Figures 1, 2 and 3**).

An iterative sharing game that tends toward the equal distribution of the players' amounts is what we call an

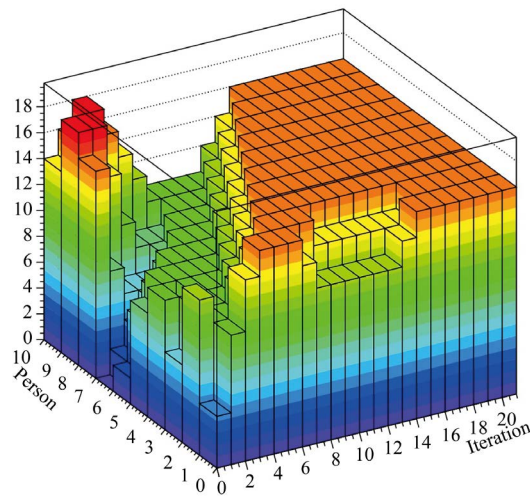


Figure 1. 3-D graph of the discrete sharing game with 10 players and with initial distribution as shown. In this example, equidistribution is achieved at the 16-th iteration.

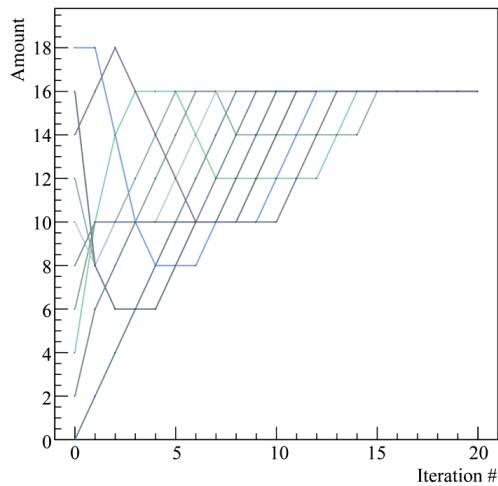


Figure 2. 2-D graph of the game given in Figure 1. This graph does not show how the initial amounts are distributed around the table.

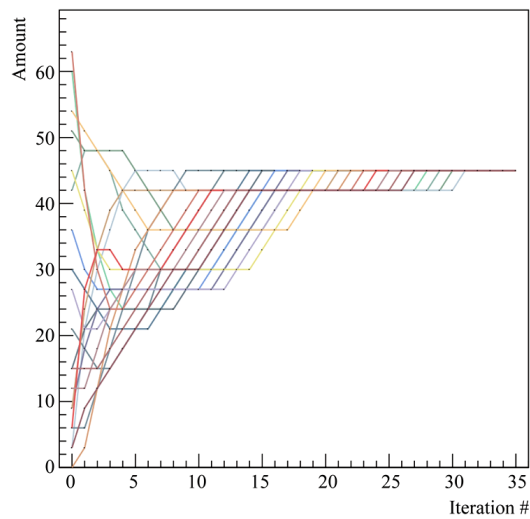


Figure 3. 2-D graph of a generalized discrete sharing game with 20 players and $k = 3$.

“equidistribution process”. You may think that in the above example, the equidistribution is due to the fact that the sharing is done by halves. However, Proposition 1.1 generalizes without much effort: suppose all the a_i ’s are initially multiples of a fixed number k . Replace (1) with

$$\frac{k-1}{k}a_i + \frac{1}{k}a_{i-1} \rightarrow a_i, \quad i=1, \dots, n,$$

and (2) with a similar step where you add dimes until you reach the first multiple of k greater than or equal to a_i for all $i=1, \dots, n$. Then again you will end up with $a_1 = a_2 = \dots = a_n$ after a finite number of steps.

2. Sharing around a Table with Complex Numbers

Suppose there are n persons around a circular table, numbered counterclockwise as before. But this time each of them starts with an initial amount $a_i, i \leq 1 \leq n$, that can be any complex number. Let r be a positive real number, $0 < r < 1$. It will play the role of $\frac{1}{k}$ above. We want to study the behavior of

$$(1-r)a_i + ra_{i-1} \rightarrow a_i, \quad i=1, \dots, n,$$

as the number of iterations goes to infinity. Note that the balancing step (2) does not make sense here anymore, as neither the a_i ’s are necessarily integers nor $r = \frac{1}{k}$ for some $k \in \mathbb{N}$. We can give a realistic feeling to the game if we restrict the a_i ’s to real numbers. Then at each step, each person is sharing her wealth ($a_i > 0$) or debt ($a_i < 0$) by giving a portion r of her number to the person on her right. But this restriction is unnecessary, so we will work in the more general setting of complex numbers. In contrast to the discrete version of the last section, we call this the “complex sharing game”.

For $\ell = 0, 1, 2, \dots$, let a_i^ℓ be the amount that person i has after the ℓ -th step. Then $a_i^0 = a_i$, and we also extend the definition by setting $a_i^\ell = a_j^\ell$ whenever $i \equiv j \pmod n$, so that a_i^ℓ makes sense for any integer i . The rule for sharing at each step then yields

$$a_i^{\ell+1} = ra_{i-1}^\ell + (1-r)a_i^\ell, \tag{3}$$

where the sub-indices are understood modulo n .

Note that if $n = 2$, then $|a_2^{\ell+1} - a_1^{\ell+1}| = |2r-1||a_2^\ell - a_1^\ell|$. Since $|2r-1| < 1$, clearly this sharing game with only two people is an equidistribution process. This is particularly trivial if $r = \frac{1}{2}$, in which case both persons will have the same number after just one step. From now on, we assume $n > 2$. Note also that the sum of the numbers around the table remains constant with each step. Let us denote this constant by S , that is

$$S = a_1^\ell + a_2^\ell + \dots + a_n^\ell, \quad \ell \geq 0.$$

2.1. The Sharing Transformation and Its Eigenvalues

We can model the sharing process (3) with the aid of the \mathbb{C} -linear transformation $T_r : \mathbb{C}^n \rightarrow \mathbb{C}^n$ given by

$$T_r(z_1, \dots, z_n) = (rz_n + (1-r)z_1, rz_1 + (1-r)z_2, \dots, rz_{n-1} + (1-r)z_n).$$

With the notation as above, we see that $(a_1^\ell, \dots, a_n^\ell) = T_r^\ell(a_1, \dots, a_n)$, where the exponent on T_r indicates the number of times that this transformation is composed with itself: $T_r \circ T_r \circ \dots \circ T_r$.

In the canonical basis of \mathbb{C}^n , T_r has matrix

$$A_r = \begin{pmatrix} 1-r & 0 & \dots & 0 & r \\ r & 1-r & \dots & 0 & 0 \\ 0 & r & \dots & 0 & 0 \\ \vdots & \vdots & \ddots & \vdots & \vdots \\ 0 & 0 & \dots & r & 1-r \end{pmatrix},$$

which has entries $1-r$ along the main diagonal, r on the diagonal immediately below and at the upper right

corner, and zero elsewhere. This is a “stochastic” or “Markov” matrix, as its entries are all non-negative and the sum of the entries in each row is equal to 1. For more information on these matrices and their interesting properties, we refer the reader to [2]. We will presently prove some of these properties for our matrix A_r in order to make this note more self-contained, but the reader should be aware that both Propositions 1.1 and Theorem 2.2 below hold for any stochastic matrix.

Proposition 2.1 *The matrix A_r has n distinct eigenvalues $\lambda_1 = 1, \lambda_2, \dots, \lambda_n \in \mathbb{C}$ with $|\lambda_i| < 1$ for $i = 2, \dots, n$.*

Proof. Let $f_r(t)$ be the characteristic polynomial of T_r . Computing it explicitly, we obtain

$$f_r(t) = \det(t\mathbb{I} - A_r) = (t - (1 - r))^n - r^n.$$

Let $\omega_1, \dots, \omega_n$ be the n th distinct complex roots of r^n . Then it is easy to see that the n (distinct) roots of f_r are

$$\lambda_i = \omega_i + 1 - r, \quad i = 1, \dots, n.$$

If we set $\omega_1 = r$, then we have that $\lambda_1 = 1$. For $i = 2, \dots, n$, we have $|\lambda_i| = |\omega_i + 1 - r| < |\omega_i| + 1 - r = 1$. The inequality is strict, as ω_i is not a positive real number if $i > 1$. \square

An eigenvector associated to the eigenvalue 1 is $v_1 = (1, 1, \dots, 1)$. In our game, this eigenvector corresponds to the case where every person has the same amount ($a_i = S/n, i = 1, \dots, n$). Clearly, this situation is stable, *i.e.* does not change after applying T_r . Let v_2, \dots, v_n denote eigenvectors for the eigenvalues $\lambda_2, \dots, \lambda_n$ respectively. Thus $T_r(v_i) = \lambda_i v_i$ for each i . Now we are ready for the main result of this section, which is that the complex sharing game also tends toward equal distribution among the n players. (See **Figures 4** and **5**).

Theorem 2.2 *The complex sharing game described by (3) is an equidistribution process. That is,*

$$\lim_{\ell \rightarrow \infty} (a_1^\ell, \dots, a_n^\ell) = \left(\frac{S}{n}, \dots, \frac{S}{n} \right).$$

Proof. Note that $\{v_1, \dots, v_n\}$ is a basis for \mathbb{C}^n consisting of eigenvectors of T_r . Write $(a_1, \dots, a_n) = \sum_{i=1}^n \alpha_i v_i$ with $\alpha_i \in \mathbb{C}, i = 1, \dots, n$. Then

$$(a_1^\ell, \dots, a_n^\ell) = T_r^\ell (a_1, \dots, a_n) = T_r^\ell \left(\sum_{i=1}^n \alpha_i v_i \right) = \sum_{i=1}^n \alpha_i \lambda_i^\ell v_i.$$

Proposition 2.1 now implies that

$$\lim_{\ell \rightarrow \infty} (a_1^\ell, \dots, a_n^\ell) = \alpha_1 v_1 = (\alpha_1, \alpha_1, \dots, \alpha_1).$$

Therefore the game is indeed an equidistribution process. \square

Note that, since the sum of the n numbers remains constant at each step of the iteration above, we must have $\alpha_1 = \frac{a_1 + \dots + a_n}{n} = \frac{S}{n}$. There is another way to obtain the value of α_1 . Let C_0^n be the subspace of \mathbb{C}^n defined as $C_0^n = \{(z_1, \dots, z_n) \in \mathbb{C}^n : z_1 + \dots + z_n = 0\}$.

Lemma 2.1 *Let $\{v_1, \dots, v_n\}$ be the basis of eigenvectors fixed above. Then $\{v_2, \dots, v_n\}$ is a basis of C_0^n .*

Proof. Write $v_i = (v_{i1}, \dots, v_{in})$ for $i > 1$. Since $T_r(v_i) = \lambda_i v_i$, we have

$$(rv_{in} + (1 - r)v_{i1}, \dots, rv_{i(n-1)} + (1 - r)v_{in}) = \lambda_i (v_{i1}, \dots, v_{in}).$$

Adding the coordinates on each side of this identity, we get

$$v_{i1} + \dots + v_{in} = \lambda_i (v_{i1} + \dots + v_{in}).$$

Since $\lambda_i \neq 1$ for $i > 1$, we conclude that $v_{i1} + \dots + v_{in} = 0$. Therefore, the subspace spanned by $\{v_2, \dots, v_n\}$ is contained in C_0^n , and since both of these spaces have dimension $n - 1$, we must have equality, proving the claim. \square

We can use this statement to compute the value of α_1 . We have

$$(a_1, \dots, a_n) = \sum_{i=1}^n \alpha_i v_i = \alpha_1 v_1 + \sum_{i=2}^n \alpha_i v_i.$$

Recall that we chose $v_1 = (1, 1, \dots, 1)$. Since $\sum_{i=2}^n \alpha_i v_i \in C_0^n$, the sum of the coordinates of this vector is equal

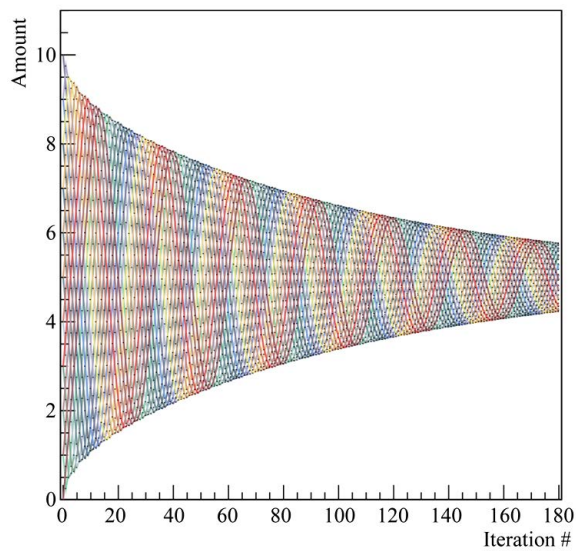


Figure 4. Evolution of the complex sharing game with 20 players and $r = 3/4$. The initial amounts are integers between 0 and 10.

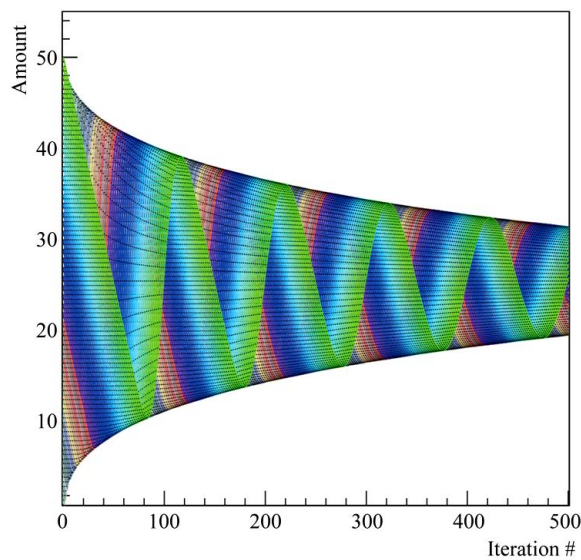


Figure 5. Evolution of the complex sharing game with 50 players and $r = 1/2$. The initial amounts are integers between 0 and 50.

to zero, and hence $a_1 + \dots + a_n = n\alpha_1$. From this we deduce again that

$$\alpha_1 = \frac{a_1 + \dots + a_n}{n} = \frac{S}{n}.$$

2.2. An Explicit Formula for a_i^ℓ

Recall that we defined $a_i^\ell = a_j^\ell$, and in particular $a_i = a_j$, whenever $i \equiv j \pmod n$. Let us find a formula, in terms of the initial data a_1, \dots, a_n , for the number that each person will have after any given step of the complex sharing game:

Proposition 2.3 For any $i \in \mathbb{Z}$ and $\ell \in \mathbb{Z}_{\geq 0}$, we have

$$a_i^\ell = \sum_{j=0}^{\ell} \binom{\ell}{j} r^j (1-r)^{\ell-j} a_{i-j}.$$

Proof. We use induction on ℓ , the initial step being obvious. Next, assume the formula holds for all $i \in \mathbb{Z}$ and for all ℓ_0 with $\ell \geq \ell_0 \geq 0$, for a fixed $\ell \geq 0$. Then,

$$\begin{aligned} a_i^{\ell+1} &= r a_{i-1}^\ell + (1-r) a_i^\ell \\ &= r \left(\sum_{j=0}^{\ell} \binom{\ell}{j} r^j (1-r)^{\ell-j} a_{i-1-j} \right) + (1-r) \left(\sum_{j=0}^{\ell} \binom{\ell}{j} r^j (1-r)^{\ell-j} a_{i-j} \right) \\ &= \sum_{j=1}^{\ell+1} \binom{\ell}{j-1} r^j (1-r)^{\ell+1-j} a_{i-j} + \sum_{j=0}^{\ell} \binom{\ell}{j} r^j (1-r)^{\ell+1-j} a_{i-j} \\ &= r^{\ell+1} a_{i-\ell-1} + \sum_{j=1}^{\ell} \left[\binom{\ell}{j-1} + \binom{\ell}{j} \right] r^j (1-r)^{\ell+1-j} a_{i-j} + (1-r)^{\ell+1} a_i \\ &= \sum_{j=0}^{\ell+1} \binom{\ell+1}{j} r^j (1-r)^{\ell+1-j} a_{i-j}, \end{aligned}$$

so the formula holds for $\ell + 1$ and the proof is complete. □

In particular, when each person shares one half of her amount at each step, we have

Corollary. *If $r = \frac{1}{2}$, then $a_i^\ell = \frac{1}{2^\ell} \sum_{j=0}^{\ell} \binom{\ell}{j} a_{i-j}$ for all $i \in \mathbb{Z}$ and $\ell \geq 0$.*

By grouping the binomial coefficients $\binom{\ell}{j}$ in congruence classes of j modulo n , we obtain an equivalent formulation of this result (always for $r = \frac{1}{2}$):

$$a_i^\ell = \frac{1}{2^\ell} \sum_{j=1}^n a_j \sum_{l=0, l \equiv i-j}^{\ell} \binom{\ell}{l} = \frac{1}{2^\ell} \left[a_1 \sum_{l=0, l \equiv i-1}^{\ell} \binom{\ell}{l} + \dots + a_n \sum_{l=0, l \equiv i}^{\ell} \binom{\ell}{l} \right],$$

where each congruence is understood to be modulo n . If all the initial amounts a_1, \dots, a_n are equal, the sharing process is stable from the beginning, and this formula reduces to the well known fact about the sum of the entries in the ℓ -th row of the Pascal triangle, $\sum_{j=0}^{\ell} \binom{\ell}{j} = 2^\ell$. What is more interesting is that, in light of

Theorem 2.2, $\lim_{\ell \rightarrow \infty} a_i^\ell = \frac{S}{n}$ for all i , regardless of the initial amounts. So given n , if we group the binomial

coefficients $\binom{\ell}{j}$ by the congruence classes of j modulo n and give each class an arbitrary weight, then as we

go further down the rows of the Pascal triangle, the weighed sum of the entries divided by the sum with no

weights, 2^ℓ , always tends to the average of the weights. More generally, regardless of the value of r , Theorem 2.2 shows that the sums given in the statement of Proposition 2.3 all tend to the same limit $\frac{S}{n}$ as $\ell \rightarrow \infty$.

2.3. Eigenvectors of T_r and Vandermonde Matrices

Let ω be any n -th root of unity, i.e. $\omega^n = 1$. Then it is easy to check that

$$T_r(1, \omega, \omega^2, \dots, \omega^{n-1}) = (r\omega^{n-1} + 1 - r)(1, \omega, \omega^2, \dots, \omega^{n-1}).$$

That is, $(1, \omega, \omega^2, \dots, \omega^{n-1})$ is an eigenvector of T_r with eigenvalue $r\omega^{n-1} + 1 - r$, the latter being of course one of the λ_i above.

Therefore, if ω_p is a primitive n -th root of unity, then the vectors v_1, \dots, v_n given by

$$v_i = (1, \omega_p^{i-1}, \omega_p^{2(i-1)}, \dots, \omega_p^{(n-1)(i-1)})$$

form a basis for \mathbb{C}^n consisting of eigenvectors of T_r . Note that we have again $v_1 = (1, 1, \dots, 1)$ as above, and

that the eigenvalue for v_i is $\lambda_i = r\omega_p^{(i-1)(n-1)} + 1 - r$.

Under the (ordered) basis v_1, \dots, v_n, T_r has diagonal matrix

$$D_r = \begin{pmatrix} \lambda_1 & \dots & 0 \\ \vdots & \ddots & \vdots \\ 0 & \dots & \lambda_n \end{pmatrix}.$$

The matrix whose columns are the coordinates of the vectors v_1, \dots, v_n changes the basis from the canonical to v_1, \dots, v_n . This is a Vandermonde matrix

$$V_r(\omega_p) = \begin{pmatrix} 1 & 1 & 1 & \dots & 1 \\ 1 & \omega_p & \omega_p^2 & \dots & \omega_p^{n-1} \\ \vdots & \vdots & \vdots & \ddots & \vdots \\ 1 & \omega_p^{n-1} & \omega_p^{2(n-1)} & \dots & \omega_p^{(n-1)^2} \end{pmatrix},$$

and it is well known that its inverse is another (normalized) matrix of the same type,

$$V_r(\omega_p)^{-1} = \frac{1}{n} V_r(\omega_p^{-1}).$$

We can use this last matrix to express the vector of initial amounts (a_1, \dots, a_n) in terms of the basis $\{v_1, \dots, v_n\}$. As in the proof of Proposition 2, let $(a_1, \dots, a_n) = \sum_{i=1}^n \alpha_i v_i$. Then

$$\frac{1}{n} V_r(\omega_p^{-1}) \begin{bmatrix} a_1 \\ a_2 \\ \vdots \\ a_n \end{bmatrix} = \begin{bmatrix} \alpha_1 \\ \alpha_2 \\ \vdots \\ \alpha_n \end{bmatrix}$$

and a straightforward computation yields $\alpha_j = \frac{1}{n} \sum_{i=1}^n \omega_p^{-(j-1)(i-1)} a_i$ for $j=1, \dots, n$. This gives us yet another

way to obtain $\alpha_1 = \frac{a_1 + \dots + a_n}{n} = S$.

3. Sharing at an Infinite Table

Suppose now that, instead of a circular table, we have an infinite number of persons seated on one side of an infinitely long “rectangular” table, their number being unbounded both from the left and the right. Each person has an initial (complex number) amount to be shared in the same way as in the game with the circular table: at each step, each person gives a portion r of her amount to the person on her right. As before, r is a fixed positive real number, $0 < r < 1$. We call this version the “infinite sharing game”.

The initial data now is a sequence $(a_i)_{i \in \mathbb{Z}}$ of complex numbers. We define a_i^ℓ as in (3) for $i \in \mathbb{Z}$ and $\ell \geq 0$. Note that this time there is no “congruence modulo n ”, as there are infinitely many players, indexed by the integers. Indeed, the rectangular table can be regarded as the limit of circular tables having $n \rightarrow \infty$. The recursion from sharing is the same as before:

$$a_i^{\ell+1} = r a_{i-1}^\ell + (1-r) a_i^\ell \quad \forall \ell \geq 0, \forall i \in \mathbb{Z}. \tag{4}$$

Proposition 2.3 also holds here, and the proof is the same. The only difference is that now we do not have $a_i = a_j$ whenever $i \equiv j \pmod n$, the condition that effectively made the game circular (and with n players) before. So we still get

$$a_i^\ell = \sum_{j=0}^{\ell} \binom{\ell}{j} r^j (1-r)^{\ell-j} a_{i-j}. \tag{5}$$

This formula shows something that is obvious in the new context, namely that the amount of the person in the i -th place will depend only on the initial amounts of those people seated to her left (and on her own initial amount, of course). So there is no reason to believe that this new game should be an equidistribution process.

For instance, if there is a concentration of wealth (by which we mean numbers with large absolute value) in some section of the table, it will never spread to the left. However, as the following result shows, if one of the sequences $(a_i^\ell)_{\ell \geq 0}$ converges, then the game will tend toward equal distribution.

Theorem 3.1 *If $\lim_{\ell \rightarrow \infty} a_i^\ell$ exists for some $i \in \mathbb{Z}$, then $\lim_{\ell \rightarrow \infty} a_j^\ell$ exists for all $j \in \mathbb{Z}$, and all of these limits coincide.*

Proof. Let $i \in \mathbb{Z}$ be such that $L_i = \lim_{\ell \rightarrow \infty} a_i^\ell$ exists. Then, using (4), we have

$$\lim_{\ell \rightarrow \infty} a_{i-1}^\ell = \frac{1}{r}(L_i - (1-r)L_i) = L_i,$$

i.e. L_{i-1} exists and it is equal to L_i . By induction, we have then that L_j exists and $L_j = L_i$ for all $j \leq i$. Now, using (4) again,

$$ra_i^\ell = a_{i+1}^{\ell+1} - (1-r)a_{i+1}^\ell \tag{6}$$

for all $\ell \geq 0$. Since $a_i^\ell \rightarrow L_i$ as $\ell \rightarrow \infty$, given $\varepsilon > 0$ there exists $\ell_0 \in \mathbb{N}$ such that $|a_i^\ell - L_i| < \frac{\varepsilon}{2}$ for all $\ell \geq \ell_0$. But then we have that for $k \geq 1$,

$$\begin{aligned} & |a_{i+1}^{\ell_0+k} - L_i| \\ & \leq \sum_{j=0}^{k-1} (1-r)^j |a_{i+1}^{\ell_0+k-j} - (1-r)a_{i+1}^{\ell_0+k-j-1} - rL_i| + (1-r)^k |a_{i+1}^{\ell_0} - L_i| \\ & \leq \frac{1-(1-r)^k}{r} r \frac{\varepsilon}{2} + (1-r)^k |a_{i+1}^{\ell_0} - L_i| \\ & \leq \frac{\varepsilon}{2} + (1-r)^k |a_{i+1}^{\ell_0} - L_i|, \end{aligned} \tag{7}$$

because

$$|a_{i+1}^{\ell_0+k-j} - (1-r)a_{i+1}^{\ell_0+k-j-1} - rL_i| = r |a_{i+1}^{\ell_0+k-j-1} - L_i| < r \frac{\varepsilon}{2}$$

thanks to (6), and

$$L_i \left(-r \sum_{j=0}^{k-1} (1-r)^j - (1-r)^k \right) = -L_i.$$

For $k \gg 0$, we can get $(1-r)^k |a_{i+1}^{\ell_0} - L_i| < \frac{\varepsilon}{2}$ which, together with (7), shows that $L_i = \lim_{\ell \rightarrow \infty} a_{i+1}^\ell = L_{i+1}$, and from here we deduce (again by induction) that $L_j = \lim_{\ell \rightarrow \infty} a_j^\ell = L_i$ for all $j > i$. \square

It would be an interesting problem to characterize those sequences $(a_i)_{i \in \mathbb{Z}}$ of initial data that induce an equidistribution process in the infinite rectangular table. Note for instance that if $f: \mathbb{Z} \rightarrow \mathbb{C}$ is any periodic function and we set $a_i = f(i)$ for $i \in \mathbb{Z}$, then the game will be an equidistribution process (this is essentially the complex game around a circular table, where the number of players is the period of f , “lifted” to the infinite rectangular table). One natural question to ask is this: if the initial data is bounded, must the infinite game be an equidistribution process? Suppose that $|a_i| \leq C$ for all $i \in \mathbb{Z}$. Then, since

$$\sum_{j=0}^{\ell} \binom{\ell}{j} r^j (1-r)^{\ell-j} = (r + (1-r))^\ell = 1, \tag{8}$$

we see from (5) that $|a_i^\ell| \leq C$ for all $i \in \mathbb{Z}$ and $\ell \geq 0$. Does this imply that the sequence $(a_i^\ell)_{\ell \geq 0}$ converges for some (and hence all) $i \in \mathbb{Z}$? The answer is NO, as the following example shows.

Example 1 *Suppose $r \leq \frac{1}{2}$, and set*

$$a_i = \begin{cases} 1 & \text{if } i = -1, \\ 1 & \text{if } -2^k 3^k \leq i \leq -2^{k-1} 3^k - 1 \text{ for some } k \in \mathbb{Z}_{>0}, \\ 0 & \text{otherwise.} \end{cases}$$

This sequence can be defined recursively by first setting all its values equal to zero for $i \geq 0$, then $a_{-1} = 1$, and from there on we move to the left two zeroes, then three ones. Every time we end with a list of ones, we put a sequence of zeroes doubling in the number of the sequence already built so far (starting from a_{-1}). And every time we end with a list of zeroes, we put a sequence of ones equal to the number of the sequence already built so far (starting from a_{-1}), always moving to the left. So, the sequence looks like this (starting from a_{-1} on the right):

$$\dots, 0, 0, 1, 1, 1, 1, 1, 1, 1, 1, 1, 1, 1, 1, 1, 1, 1, 1, 1, 1, 0, 0, 0, 0, 0, 0, 0, 0, 0, 0, 0, 0, 1, 1, 1, 0, 0, 1$$

With this sequence as the initial data and (5), one can show that for any positive integer k ,

$$a_{-1}^{2^k 3^k} \geq \frac{1}{2}, \quad a_{-1}^{2^{k-1} 3^k} \leq \frac{1}{3},$$

so the sequence $(a_{-1}^\ell)_{\ell \geq 0}$ does not converge and, in light of Theorem 3.1, $(a_i^\ell)_{\ell \geq 0}$ does not converge for any $i \in \mathbb{Z}$.

An immediate consequence of Theorem 3.1, is that if there exist $j \in \mathbb{Z}$ and $a \in \mathbb{C}$ such that $a_i = a$ for all $i < j$, then the infinite game is an equidistribution process. This is, in fact, a particular case of a more general fact: it turns out that equidistribution follows from the existence of $\lim_{i \rightarrow -\infty} a_i$ (and not, as we just saw, from the boundedness of $(a_i)_{i \in \mathbb{Z}}$).

Theorem 3.2 *Suppose that $\lim_{i \rightarrow -\infty} a_i = a \in \mathbb{C}$. Then $\lim_{\ell \rightarrow \infty} a_i^\ell = a$ for every $i \in \mathbb{Z}$.*

Proof. Consider the sequence $(b_i)_{i \in \mathbb{Z}}$ defined as $b_i = a_i - a$ for all $i \in \mathbb{Z}$. For a fixed i , due to (4), it is easy to see that $\lim_{\ell \rightarrow \infty} a_i^\ell = a$ if and only if $\lim_{\ell \rightarrow \infty} b_i^\ell = 0$, so we can assume without loss of generality that $\lim_{i \rightarrow -\infty} a_i = 0$. For a fixed i , since the sequence $(a_{i-j})_{j \in \mathbb{N}}$ converges, there exists $C > 0$ such that

$|a_{i-j}| < C$ for all $j \geq 1$. Let $\varepsilon > 0$ be given. Since $a_{i-\ell} \rightarrow 0$, there exists $\ell_0 \in \mathbb{N}$ such that $|a_{i-\ell}| < \frac{\varepsilon}{2}$ if

$\ell > \ell_0$. For $\ell > \ell_0$, we use (5) to write

$$a_i^\ell = \sum_{j=0}^{\ell_0} \binom{\ell}{j} r^j (1-r)^{\ell-j} a_{i-j} + \sum_{j=\ell_0+1}^{\ell} \binom{\ell}{j} r^j (1-r)^{\ell-j} a_{i-j}. \tag{9}$$

As $\sum_{j=\ell_0+1}^{\ell} \binom{\ell}{j} r^j (1-r)^{\ell-j} \leq 1$ (because of (8)), we get easily

$$\left| \sum_{j=\ell_0+1}^{\ell} \binom{\ell}{j} r^j (1-r)^{\ell-j} a_{i-j} \right| < \frac{\varepsilon}{2}.$$

As for the first summand of (9), we have:

$$\begin{aligned} & \left| \sum_{j=0}^{\ell_0} \binom{\ell}{j} r^j (1-r)^{\ell-j} a_{i-j} \right| \\ & \leq (1-r)^{\ell-\ell_0} \left(\sum_{j=0}^{\ell_0} \binom{\ell}{j} r^j |a_{i-j}| \right) \leq (1-r)^{\ell-\ell_0} \left(\sum_{j=0}^{\ell_0} \binom{\ell}{j} r^j \right) C \\ & \leq (1-r)^{\ell-\ell_0} (1+r)^\ell C = (1-r^2)^\ell \frac{C}{(1-r)^{\ell_0}}. \end{aligned}$$

Since $1-r^2 < 1$, for $\ell \gg 0$ we get $(1-r^2)^\ell \frac{C}{(1-r)^{\ell_0}} < \frac{\varepsilon}{2}$, and hence we can bound (9) as follows:

$$|a_i^\ell| \leq \frac{\varepsilon}{2} + \frac{\varepsilon}{2} = \varepsilon, \quad \ell \gg 0,$$

which proves that $\lim_{\ell \rightarrow \infty} a_i^\ell = 0$. □

When the initial amounts are all real, $(a_i)_{i \in \mathbb{Z}} \subset \mathbb{R}$, one can similarly show that if $\lim_{i \rightarrow -\infty} a_i = +\infty$ (resp. $-\infty$), then $a_i^\ell \rightarrow +\infty$ (resp. $-\infty$) as $\ell \rightarrow \infty$, for every $i \in \mathbb{Z}$.

Note that the existence of $\lim_{i \rightarrow -\infty} a_i$ is sufficient but not necessary for the infinite game to be an equidistribution process. This can be seen from the above example where the initial data take on the values of a periodic function $f: \mathbb{Z} \rightarrow \mathbb{C}$. As mentioned above, it would be interesting to find more explicit necessary and

sufficient conditions than the existence of $\lim_{\ell \rightarrow \infty} \sum_{j=0}^{\ell} \binom{\ell}{j} r^j (1-r)^{\ell-j} a_{i-j}$ for some $i \in \mathbb{Z}$, which is essentially the characterization we get from Theorem 3.1 and (5).

Acknowledgements

We are grateful to Adrián Paenza from whom we learnt about the discrete sharing game and the reference [1]. We would also like to thank José Ignacio Burgos for interesting discussions, Gervasio Gómez for programming several simulations and producing the figures, and Juan Sabia for suggesting the statement of Theorem 3.2 as it appears in the text, which is stronger and more general than what we had originally written.

The first author was partially supported by the research project MTM201020279 from the Ministerio de Ciencia e Innovación (Spain).

REFERENCES

- [1] G. Z. Chang and T. W. Sederberg, "Over and Over again," New Mathematical Library, 39. Mathematical Association of America, Washington DC, 1997. xiv+309 pp. ISBN: 0-88385-641-7.
- [2] G. Latouche and V. Ramaswami, "Introduction to Matrix Analytic Methods in Stochastic Modeling," 1st Edition, PH Distributions, ASA SIAM, 1999.