

# Delineation of Protection Zones for the Main Discharge Area of the Gran Sasso Aquifer (Central Italy) through an Integrated Geomorphological and Chronological Approach

Francesca Biava, Mauro Consonni, Vincenzo Francani, Paola Gattinoni, Laura Scesi

Department of Civil and Environmental Engineering, Politecnico di Milano, Milan, Italy  
Email: [paola.gattinoni@polimi.it](mailto:paola.gattinoni@polimi.it)

Received 28 October 2014; revised 29 November 2014; accepted 15 December 2014

Copyright © 2014 by authors and Scientific Research Publishing Inc.  
This work is licensed under the Creative Commons Attribution International License (CC BY).  
<http://creativecommons.org/licenses/by/4.0/>



Open Access

---

## Abstract

The paper proposes a study for the delineation of protection zones in the main discharge area of the Gran Sasso aquifer (Central Italy). At this aim, starting from a detailed geological and hydro-geological reconstruction, the study was divided into the following phases: 1) development of a conceptual model of water flow in the study area; 2) creation of a 3D numerical model in order to simulate the groundwater flow in saturated conditions, both at the basin and at fine-scale; 3) flow path analysis through deterministic and stochastic approaches; 4) assessment of the aquifer vulnerability based on a geomorphological analysis of the catchment area. Conceptual and numerical models were then used to delineate protection zones for wells and springs with chronological criterion and geomorphological-structural criterion (based on the EPIK method). The results show that with a chronological approach protection zones are located along the main flow directions, corresponding to the areas surrounding wells and springs with high hydraulic conductivity values (faults and thrusts) within the saturated zone. On the contrary, the geomorphological method has found some important protection zones also quite far from wells and springs, in areas characterized by quick infiltration processes. The protection zones delineated with the stochastic method were finally intersected by the vulnerability map obtained with the EPIK method, to take into account both filtration and infiltration processes. The results show the local vulnerability of the groundwater to the pollution, with protection zones extending 1 to 5 km towards northeast from springs and wells.

## Keywords

Karst Aquifer, Italy, Protection Zones, Spring

---

**How to cite this paper:** Biava, F., Consonni, M., Francani, V., Gattinoni, P. and Scesi, L. (2014) Delineation of Protection Zones for the Main Discharge Area of the Gran Sasso Aquifer (Central Italy) through an Integrated Geomorphological and Chronological Approach. *Journal of Water Resource and Protection*, 6, 1816-1832.  
<http://dx.doi.org/10.4236/jwarp.2014.619161>

## 1. Introduction

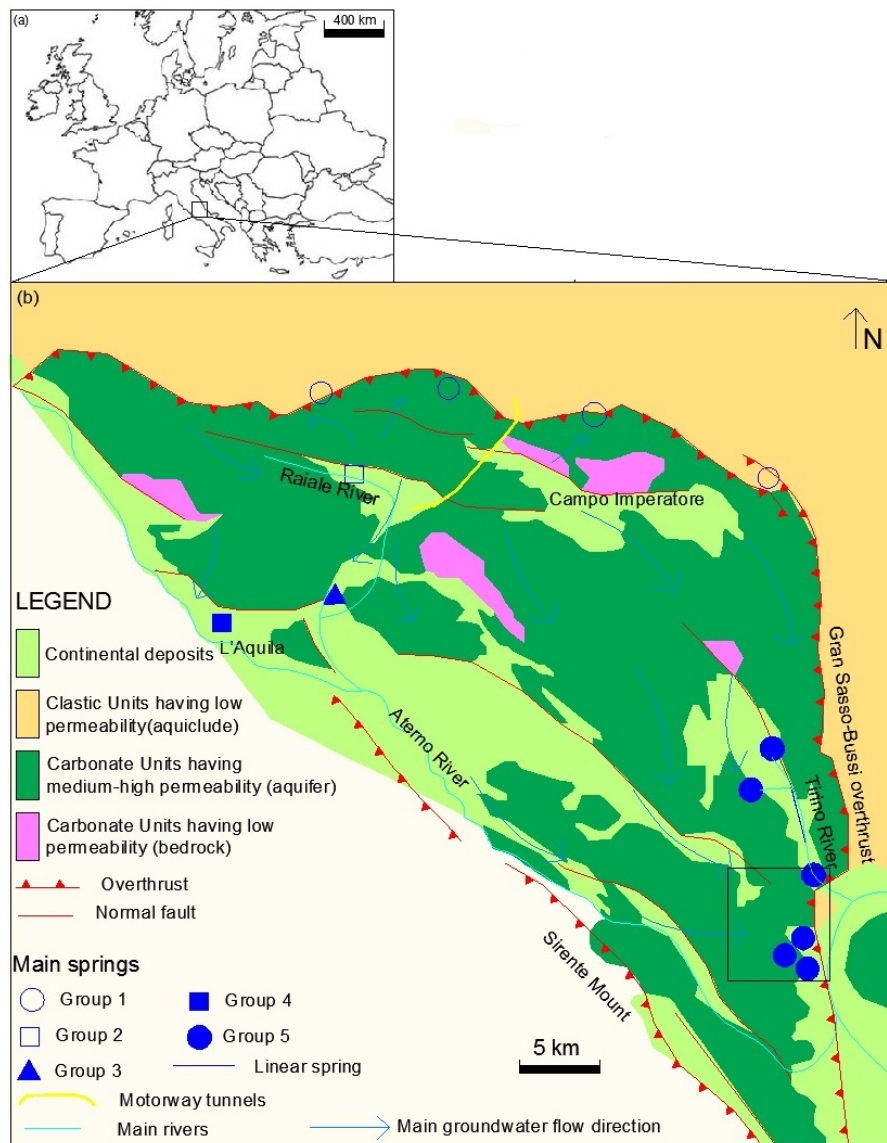
The problem of the supply and the protection of groundwater resources is currently a highly topical subject. In particular, karst aquifers often constitute important and strategic water resources in many mountain areas. Yet, these aquifers are highly vulnerable to degradation and pollution problems: geology (fractured carbonate rocks), morphology (presence of epikarst and network of karst cavities), and hydrogeology (rapid concentrated flow through fractures and conduits) strongly favor the movement of contaminants towards the water table and then to springs or wells [1] [2]. Consequently, several methods were developed to assess the vulnerability of karst groundwater to pollution and to define proper protection zones [3] [4], as required by law (*i.e.*, [5]–[7]). In accordance with EU Directives, Italian laws [8] require a protection zoning system for groundwater sources, but its application is generally based on fixed-radio methods, especially for heterogeneous aquifers, whereas the use of more complex methods, such as isochrones methods and modeling approaches, is so far very limited and generally, it concerns wellhead protection zones in alluvial aquifers.

The overall objective of the present study has been to delineate protection zones for the main discharge area of the Gran Sasso aquifer (Figure 1). This wide fractured-karst aquifer has an average flow rate of about 25 m<sup>3</sup>/s, and therefore it is one of the most important water resources of Central Italy. In particular, the present report aims to update the prior knowledge about the main discharge area of the aquifer, where more than 75% of the groundwater flowing in the aquifer rises to the surface supplying springs and a large public-water service. The interest for this area is related not only to its great availability of groundwater resources but also to contamination issues. The aquifer has been the center of attention in recent years due to a local decrease in its qualitative characteristics because of the presence of a heavy industrial pollution, which resulted in the sudden closure of important public-water wells. New public water wells were then realized just a few kilometers upstream from the polluted site. Nowadays it is obviously a prime socio-economic issue to guarantee the protection of the water resource against further impact. To this aim, a fine-scale hydrogeological conceptual model was reconstructed and then used to develop a groundwater flow model and to delineate proper protection zones for wells and springs in the studied area with different methods: 1) a chronological method, based on flow simulation in saturated medium with both a deterministic and stochastic approach; 2) a vulnerability-based approach (EPIK method); 3) a combination of the two previous methods, in order to take into account both the filtration and infiltration processes.

## 2. Previous Knowledge on the Hydrogeological Setting at Basin Scale

The Gran Sasso aquifer (Central Italy, Figure 1(a)) can be identified with a carbonate karst hydrogeological system having an area of about 800 km<sup>2</sup>, and an altitude ranging between 2912 and 270 m a.s.l.. From a lithological point of view, the hydrogeological system of the Gran Sasso massif consists of carbonate rocks of Mesozoic units belonging to slope-to-basin lithofacies [9]. These carbonate rocks have a medium-high hydraulic conductivity, which determines the presence within the massif of a large regional aquifer having a flow rate of about 25 m<sup>3</sup>/s. The recharge of the aquifer is on average equal to 500 mm/year [10] and it arises from meteoric precipitations, mainly located in the northern tectonic-karstic area of Campo Imperatore (Figure 1(b)).

In the last decades, the Gran Sasso aquifer was the objective of a number of hydrogeological studies. Reference [11] was the first who outlined the geological and hydrogeological setting of the aquifer mainly based on the data arising from the construction of the motorway tunnels in the northern zone of the catchment area. Afterwards, several authors improved the knowledge on the Gran Sasso aquifer: references [12] and [13] defined the hydrodynamic scheme of the aquifer at catchment scale, based on hydrological, hydro chemical and hydrogeological data. Reference [14] improved the hydrodynamic conceptual model, by analyzing the hydro chemical monitoring data on springs. Moreover, the availability of subsurface data arising from the construction of the motorway tunnels and scientific laboratories in the northern zone of the catchment area has favored the development of fine-scale studies in this zone [15]. On the contrary, there are few fine-scale studies for the southern zone of the aquifer. Among these studies, [16] proposed a detailed study of the Tirino River springs, achieving a hypothesis of the water table map of the zone, based on surface data. Previous studies at catchment scale pointed out that the groundwater flows from the central zone of the massif towards the marginal zones, and the structural setting, karst features, and depth of the dolomite bedrock control it. The tectonic setting of the massif also determines the permeability boundaries of the Gran Sasso aquifer system (Figure 1(b)). In particular:



**Figure 1.** (a) Location map of the studied area; (b) Hydrogeological map of the Gran Sasso Massif (modified from [12]). The black rectangle in Figure 1(b) represents the study area of Figure 2.

- To the North and to the East: the main overthrust having E-W and therefore N-S direction, dipping respectively towards South and West, causes the tectonic overlapping of the carbonate units upon the clastic ones (Flysch della Laga), which constitute the regional aquiclude (no flow boundary); the main springs are located along this boundary, and they have an average total discharge equal to  $1.6 \text{ m}^3/\text{s}$  along the northern boundary and equal to about  $15 \text{ m}^3/\text{s}$  along the eastern boundary (Tirino Valley);
- To SE: the discordant stratigraphic limit (locally tectonic) of the Quaternary units upon the carbonate ones, holding the main aquifer, determines a permeability boundary;
- To SW: groundwater exchanges with the secondary hydrogeological system of the Sirente Mount.

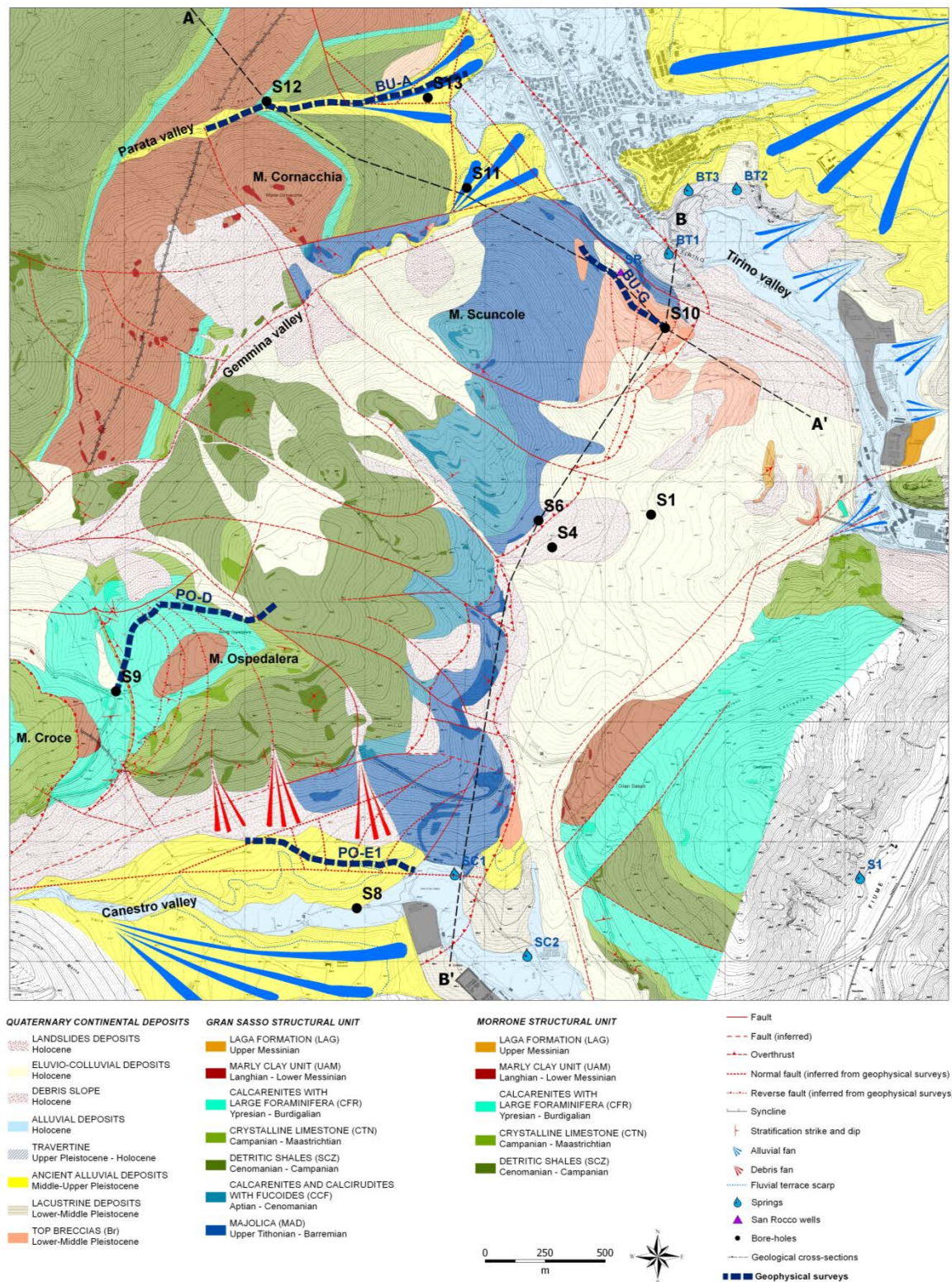
### 3. Fine-Scale Hydrogeological Setting

#### 3.1. Field Surveys and Investigations

In the present study the hydrogeological characterization at fine-scale was carried out in the main discharge zone



of the Gran Sasso aquifer, located in the south-eastern part of the catchment area (Figure 1 and Figure 2), near the contact between two regional tectonic units, the Gran Sasso Unit and the Morrone Unit [17], [18]. In partic-



**Figure 2.** Fine-scale geological map of the study area. Geognostic investigations and spring location are also shown.

ular, the Gran Sasso Unit is overthrust upon the Morrone Unit along a fault plane dipping from 10° to 60°, named “Gran Sasso-Bussi Overthrust”. The stratigraphic sequence in the study area consists mainly of carbonate rocks of the Gran Sasso Unit, ranging from Upper Jurassic to Paleogene. Quaternary deposits are present, which are mainly sands and pebbles, breccia, siltstone and travertine from Lower Pleistocene to the Present age. Carbonate rocks are characterized by widespread karstic landforms (e.g. surface micro-features and karrens in advanced stage of development).

A field survey and investigations were carried out in an area of about 20 km<sup>2</sup> (Figure 2) and they included:

- A detailed geological, hydrogeological and geostructural survey;
- Subsurface surveys through the execution of: geophysical surveys (for a total length of 4.5 km, with both geoelectric and geoseismic measures), 11 drillings (depth ranging from 40 to 485 m, for a total length of more than 1.5 km), piezometric measures, and in bore-hole permeability tests;
- The geochemical characterization and monitoring of springs and groundwater sampled from piezometers, with the definition of the standard chemical-physical parameters, electric conductivity, temperature and pH, as well as hysotopic analysis of <sup>18</sup>O/<sup>16</sup>O and <sup>2</sup>H/H.

The new data allowed improving the hydrogeological conceptual model of the studied area by:

- The characterisation of the degree of fracturing of the rock masses and mapping the main karst and tectonic features, that represent preferential recharge and flow zones for groundwater;
- The verification of the geochemical, hysotopic and hydrodynamic characteristics of groundwater in the studied area;
- The reconstruction of the local trend of the impermeable bedrock, that constitutes the regional aquiclude of the whole aquifer;
- The drawing of a water table map based on piezometric and springs data.

The following paragraphs synthetically describe the results of the geognostic investigations, and delineate a fine-scale hydrogeological conceptual model for the main discharge zone of the aquifer.

### 3.2. Hydrogeological Conceptual Model

The surface surveys and subsoil investigations provided a great number of data and information that were integrated and synthesized to achieve a fine-scale conceptual model.

From a geological and structural point of view, the interpretation of the data acquired from the geophysical surveys has been integrated with the surface geological survey to bring about the fine-scale geo-structural setting of the studied area. According to this scheme, a number of faults cause the displacement of the carbonate sequence, which is interrupted in depth by an important discontinuity: the main overthrust leads to the superimposition of the Gran Sasso tectonic unit over the Morrone tectonic unit. The latter consists in an impermeable bedrock, which acts as an aquiclude, determining a local uplift of the water table. Therefore, it favors the San Rocco Wells pumping (Figure 3, see cross-section A-A'), as well as the surfacing of groundwater along the Canestro Valley, where it supplies the alluvial aquifer and then the San Calisto springs (Figure 3, see cross-section B-B').

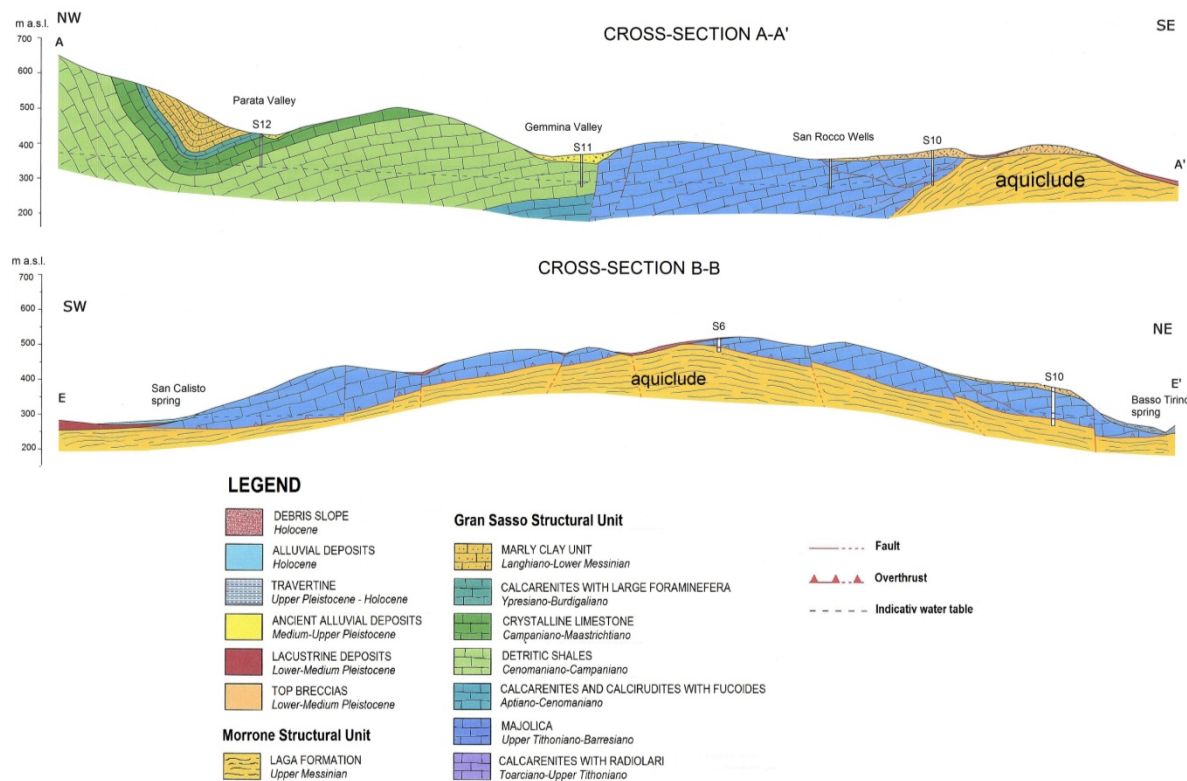
Data arising from drillings showed that the aquiclude has a structural top at an altitude of 475 m a.s.l. (Figure 3, see cross-section B-B'), and it therefore acts as a local aquifer divide (Figure 4): it divides the groundwater supplying the Tirino Valley (at east) from the groundwater supplying the Canestro Valley (at west). Based on this conceptual model, the San Calisto springs are supplied by the groundwater flowing in the western part of the catchment area, drawn by the tectonic structure of the Mt. Ospedalera, which is characterized by folds and faults. The San Rocco Wells are instead supplied by the groundwater flowing in the eastern part of the basin. After it passes the Parata Valley, it diverts its path from NW-SE to W-E, and it is stopped in its flow by the overthrust, which acts as an impermeable boundary.

Drilling and piezometers also gave data useful for drawing a water table map. Results of the available piezometric surveys confirmed a regional groundwater flow direction from NW towards SE, with high hydraulic gradients in the discharge zone, ranging from 3% and 8% (Figure 4).

As far as the hydrogeological balance is concerned, the new isotopic and chemical data confirmed that the water resources of the study zone are supplied by a wide catchment area located at an altitude much higher than the discharge zone:

- The isotopic ratio of groundwater in the study area (altitude ranging from 230 and 700 m a.s.l.) corresponds to a recharge altitude higher than 1300 m s.l.m.;





**Figure 3.** Fine-scale interpretative cross-sections of the study area (see Figure 2 for location).

- Groundwater has the same calcium-magnesium-bicarbonate hydro chemical facies everywhere, with a very similar ionic content and medium-high electric conductivity values.

Based on the groundwater balance of the whole Gran Sasso aquifer, the local contribution of the recharge in the studied area is quite small. Actually, the average infiltration in this area is equal to 150 mm/y [10], and it corresponds to a recharge less than 1.25 m<sup>3</sup>/s (equal to about 5% of the recharge in the whole basin). Therefore, the largest amount of groundwater (about 14 m<sup>3</sup>/s) inflows from the northern and western boundaries.

On the strength of geo-structural surveys, the Elementary Representative Volume (ERV [19]) ranges from 10<sup>3</sup> m<sup>3</sup> in the fractured superficial rock mass to a maximum of 10<sup>6</sup> m<sup>3</sup> in depth. Considering that the studied area is equal to about 20 km<sup>2</sup> and the aquifer has a thickness higher than 200 m, the ERV is significantly smaller than the domain size and the work scale can be considered a “very large field” [20]. The water flow occurs inside a fractured-karst medium that can be assimilated to a continuum. Moreover, at this work scale the fracture/conduit systems are uniform and well interconnected.

As a result, the hydraulic conductivity tensors and the corresponding equivalent values were calculated for the surface rock mass. Results show equivalent hydraulic conductivities ranging from  $3 \times 10^{-3}$  to  $6 \times 10^{-3}$  m/s, with maximum value of  $10^{-2}$  m/s and minimum value of  $10^{-4}$  m/s. The tensors have the major axis orientation parallel to the main tectonic structures. Based on the field surveys, along the fractures a local increase of about one order of magnitude in the hydraulic conductivity was assumed for a 50 m wide strip. In accordance with borehole permeability tests, the hydraulic conductivity generally decreases with increasing depth. The decrease is equal to about one order of magnitude in 100 m.

#### 4. Groundwater Modeling

The groundwater flow model of the study area was developed in steady state by using the numerical model MODFLOW-2000, a modular finite difference groundwater model code [21]. Actually, on the strength of the previously discussed conceptual model, for a large flow scenario such as the present study, the treatment of a fractured-karst medium as homogeneous might lead to a reasonably good match with an equivalent porous medium.

### 4.1. Large-Scale Flow Model

The groundwater flow modeling was at first carried out on a large scale, by considering the whole catchment area of the Gran Sasso aquifer. The domain having a dimension equal to  $50 \times 50 \text{ km}^2$  was split into  $115 \times 117$  cells (with size ranging from 200 m to 500 m), and the following boundary conditions were applied (Figure 5(a)):

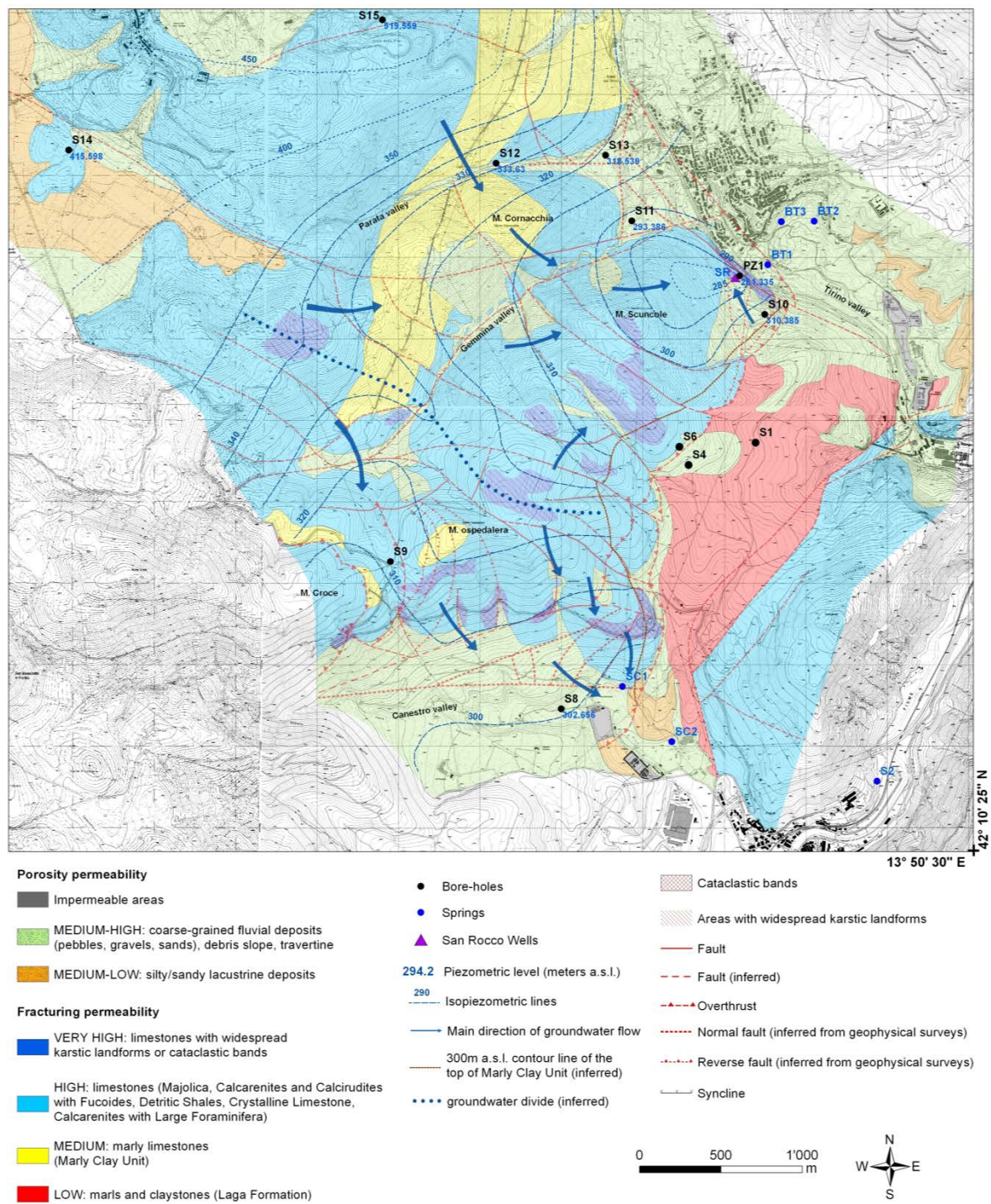


Figure 4. Fine-scale hydrogeological map of the study area.



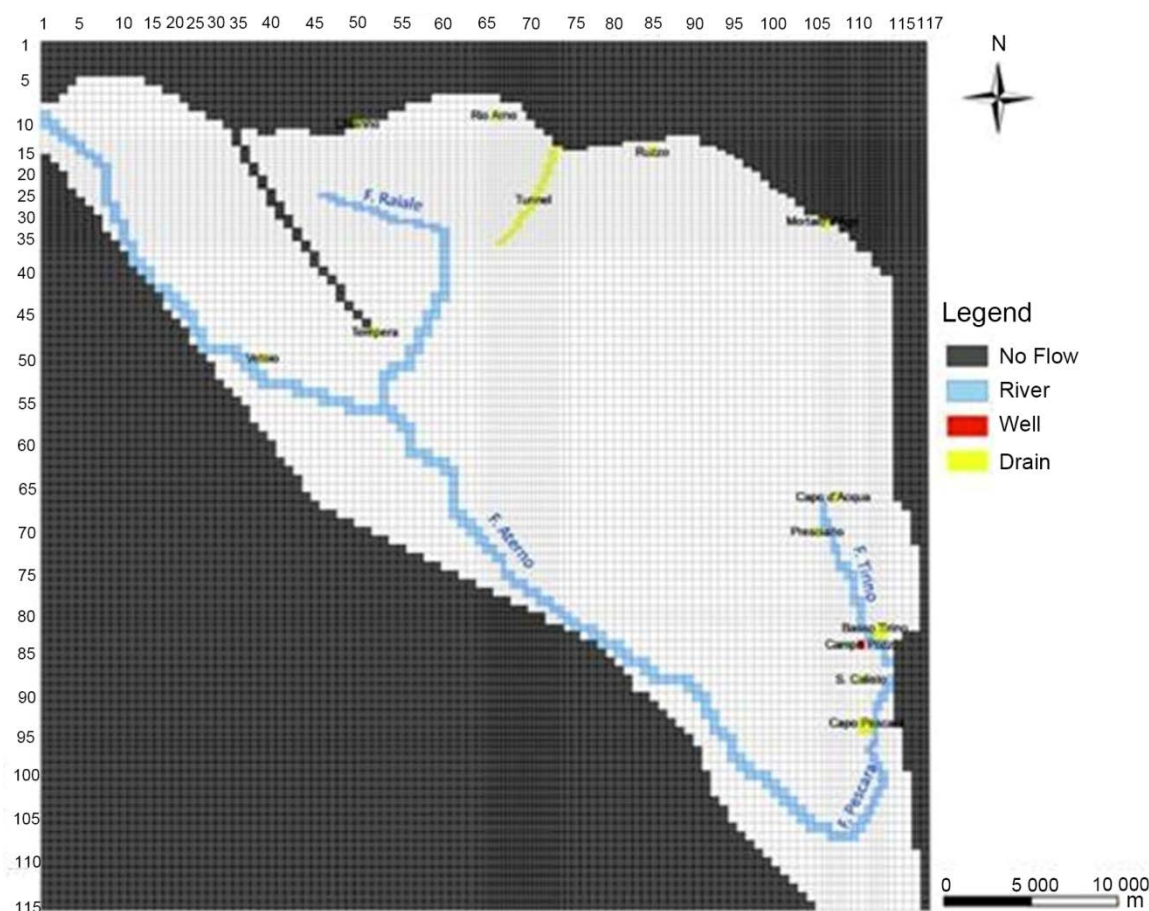
- No flow outside the catchment area,
- River boundary conditions along the main water courses,
- Drain boundary conditions for springs;
- Constant flow conditions for wells.

River and drain boundary conditions were defined in term of location and flow rate, according to data arising from previous studies (*i.e.*, [12]). The only water inflow arises from the recharge, which according to previous studies ranges from 1000 mm/y to 100 mm/y [10] depending on the altitude and on the degree of karsification in the vadose zone (Figure 5(b)).

As far as the hydraulic conductivity is concerned, the regional aquifer was simulated as a single layer having a thickness ranging from 2000 m (in the northern recharge area) to 250 m (in the southern discharge zone). The hydraulic conductivity was considered generally uniform and equal to  $6 \times 10^{-5}$  m/s with higher values (equal to  $10^{-3}$  m/s) just along the main tectonic features (see Figure 1(b) for their location). The values of the hydraulic conductivity were pointed out during the calibration process, which was carried out considering as a target the only available data at this scale of work: the flow rate of springs (Figure 6). The results of the large-scale flow model (Figure 7) confirm the flow path at basin scale, having a main flow direction from NW towards SE and a total discharge equal to 23 m<sup>3</sup>/s. These results were then used as input for the groundwater flow model at fine-scale.

#### 4.2. Detailed Flow Model for the Aquifer Discharge Area

The fine-scale groundwater flow model involved the main discharge zone of the aquifer (Figure 7), with a domain having an extension equal to  $6 \times 10$  km<sup>2</sup>. The modeling domain was split in  $203 \times 120$  cells having a size ranging from 25 m to 50 m. On the strength of the detailed geological data available for this area (Figures 2-4),



(a)



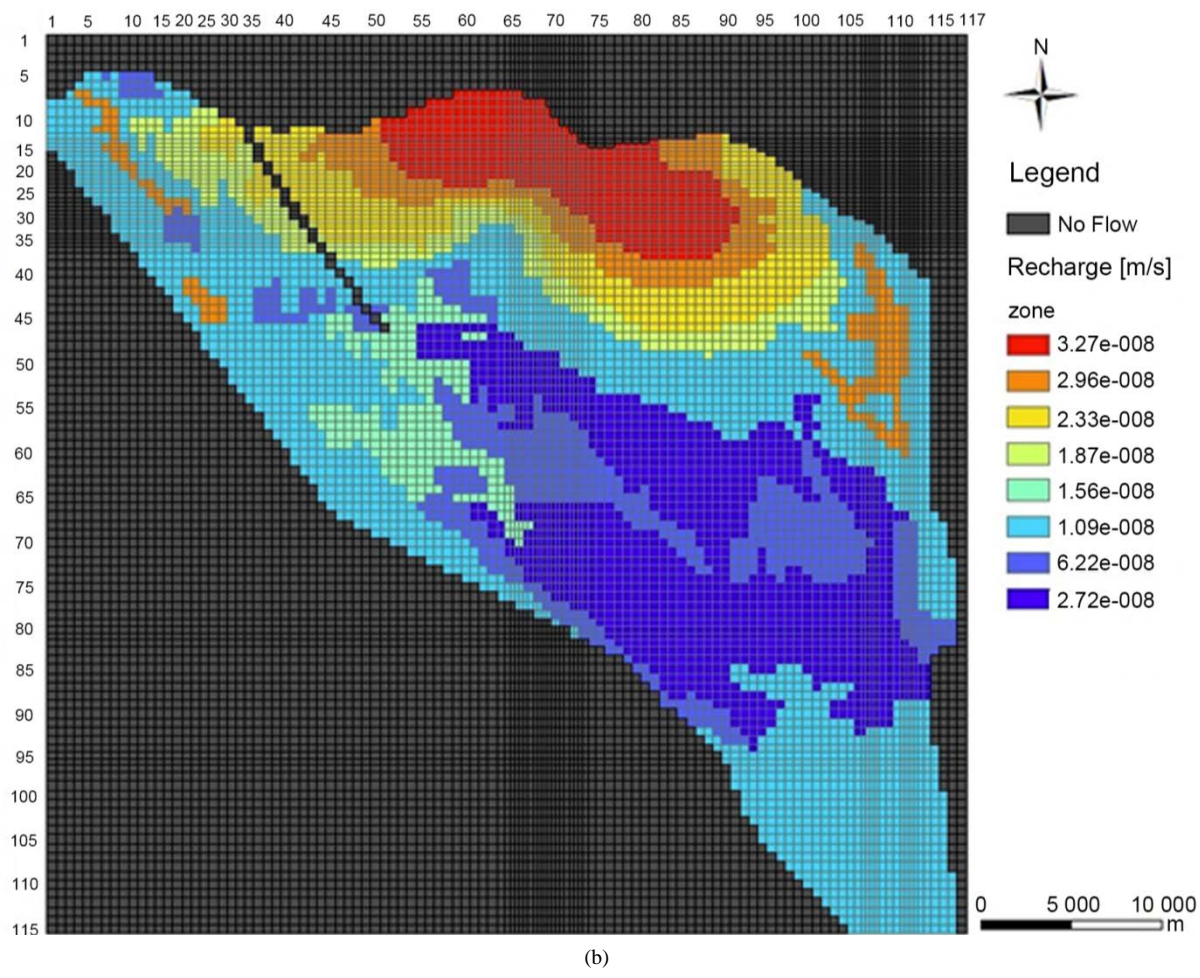


Figure 5. (a) Domain and boundary conditions; (b) Recharge conditions for the large-scale groundwater flow model.

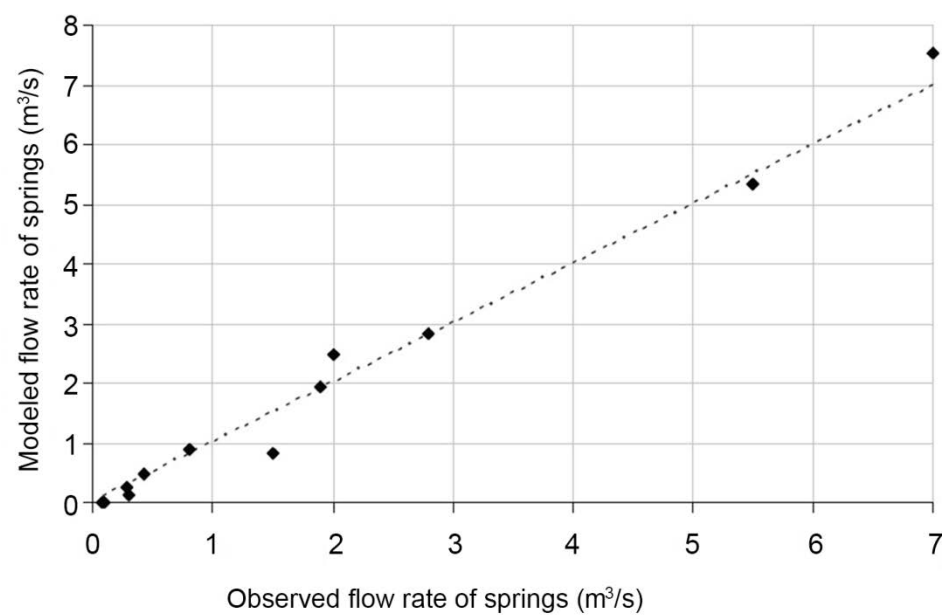
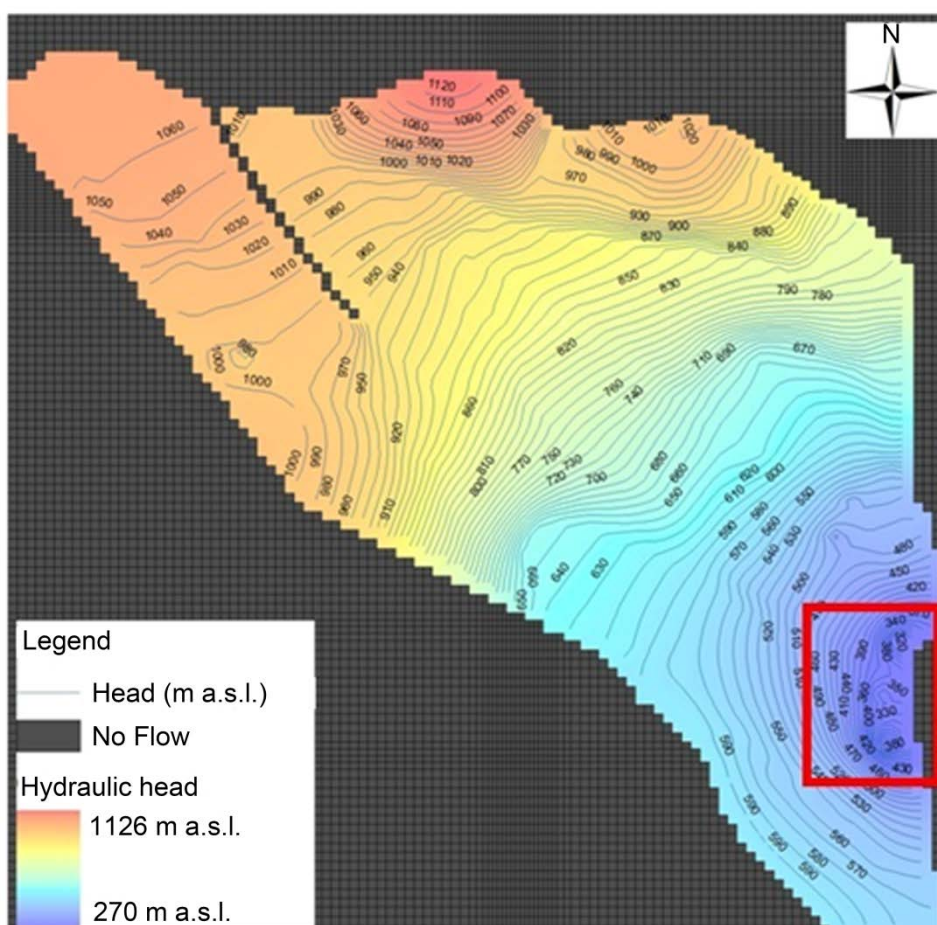


Figure 6. Calibration data for the large scale groundwater flow model.



**Figure 7.** Results of the large scale groundwater flow model. The red rectangle shows the domain of the detailed flow model.

five layers having different thickness were considered to better describe the hydrogeological setting, especially along the main overthrust.

Similarly, to the large-scale model, the following boundary conditions were applied (Figure 8):

- No flow outside the catchment area,
- Drain boundary conditions for springs;
- River along the main water courses;
- Constant flow conditions for wells;
- Recharge condition on the highest active layer (the same of the large-scale model).

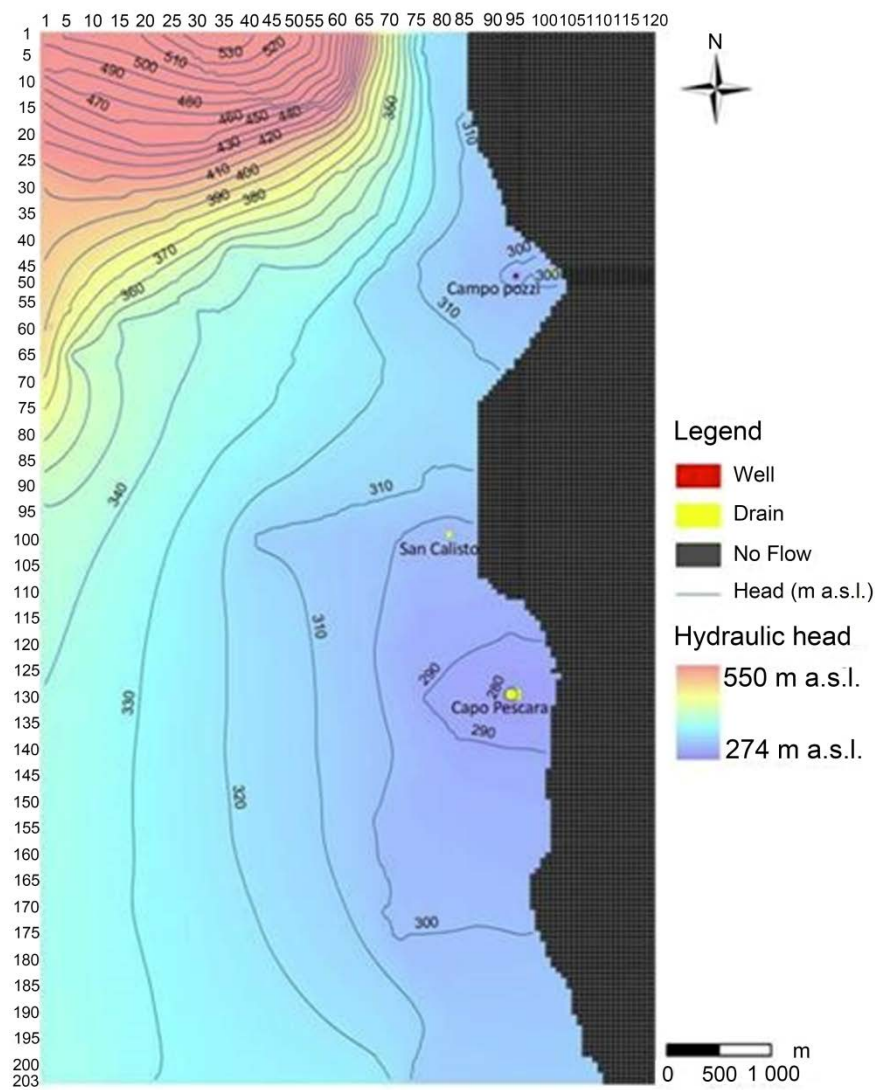
In addition, constant head conditions (ranging from 565 m a.s.l. to 300 m a.s.l.) were applied along the northern, southern and western boundaries of the domain, based on the results of the large-scale flow model.

As far as the areal distribution of hydraulic conductivity is concerned, both the fractures and the presence of some diffuse karsification zones were considered. The surface hydraulic conductivity was assessed on the base of the geological-structural data arising from structural surveys, whereas the in-depth values were pointed out by the borehole tests (Table 1). The values of the hydraulic conductivity along faults were later on calibrated, considering the observed hydraulic heads measured in the piezometers. The results allowed reconstructing the water table map near the main discharge points and they were then used to delineate their protection zones.

## 5. Delineation of Protection Zones

### 5.1. Background

The protection and management of water resources is an issue of growing interest. In particular, karst aquifers



**Figure 8.** Results of the fine-scale groundwater flow model.

**Table 1.** Hydraulic conductivity and porosity values for the small-scale model.

Layer	Layer thickness (m)	Description	Hydraulic conductivity (m/s)	Porosity
1	40	Limestones and slope debris	$8.5 \times 10^{-3}$	0.25
		Limestones with karst features	$10^{-2}$	0.3
		Faults and overthrust	$1.2 \times 10^{-2}$	0.35
		Limestones	$6.75 \times 10^{-5}$	0.2
2	30 - 200	Marles and claystones	$10^{-8}$	0.05
		Faults	$10^{-2}$	0.25
		Limestones	$9 \times 10^{-6}$	0.15
3	40 - 220	Marles and claystones	$10^{-8}$	0.05
		Faults	$3.6 \times 10^{-3}$	0.2
		Limestone along overthrust	$1.25 \times 10^{-4}$	0.2
		Limestones	$8.5 \times 10^{-6}$	0.15
4	20	Marles and claystones	$10^{-8}$	0.05
		Faults	$10^{-3}$	0.2
		Limestones	$7 \times 10^{-7}$	0.1
5	80 - 150	Limestones	$7 \times 10^{-7}$	0.1
		Marles and claystones	$10^{-8}$	0.05



appear to be highly vulnerable to pollution, precisely because of their specific structure. For this reason, regulations in order to preserve water resources for human consumption have been introduced all over the world [5]-[7]. One of the main instruments introduced to prevent pollution phenomena is in the delineation of protection zones. Several methods for delineating protection zones in fractured and karst aquifers have been proposed [4] [22]-[27], but it still remains a challenge due to heterogeneity and anisotropy which often characterize fractured and karst aquifers. As a result, in these cases methodologies for delineating groundwater protection zones must generally be adapted to different site characteristics and to the type of data available.

In the present study, the following methods were used:

- The isochrones method, with both a deterministic and stochastic approach, through the use of the previously developed flow model;
- A geomorphological method, based on the fine-scale conceptual model of the study area.

Following sections describe the application of these methods, compare their results, and integrate them in order to find a more comprehensive map of protection zones.

## 5.2. Isochrones Method

The isochrones method is generally applied to the case of vulnerable springs and wells linked to slightly heterogeneous aquifers, as the case study is.

The previously described groundwater flow model (Figure 8) was then used to reconstruct the flow path and the particle tracking around wells and springs. Results (Figure 9) highlight, as was expected, a main flow path developed along tectonic features. According to Italian laws, the 60-day isochrones corresponds to the inner

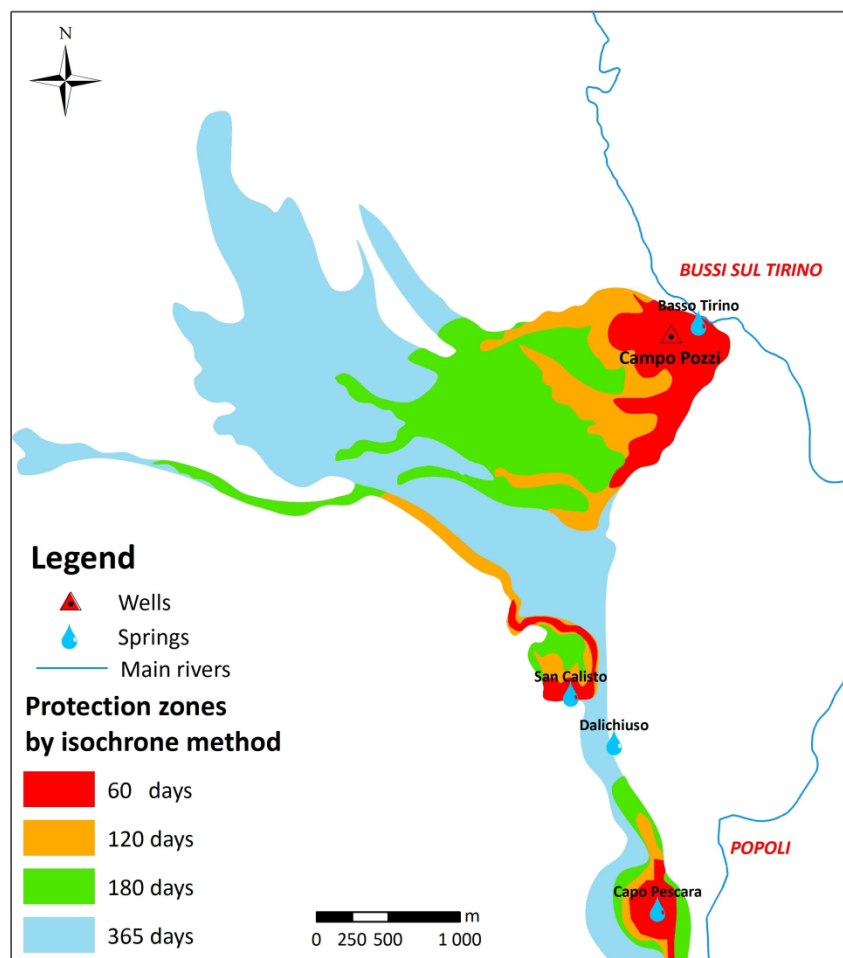


Figure 9. Protection zones according to the isochrone method.

protection zone, where a number of activities are forbidden and strict safeguards for all surface water inflow points must be provided with a total prohibition of any effluent or spillage of polluting matter. The 365-day isochrones corresponds to the outer protection zone, where a number of restrictions for civil, productive, recreational and agricultural land-uses are given. The inner protection zones obtained with this approach are only located around discharge points and they reach a maximum extension for the wells equal to about one kilometre, whereas the outer protection zone extends to about 3 km along the main flow direction.

It came out that the protection zones were controlled by the presence of tectonic features, and considering the great variability in the hydraulic conductivity values of these elements, the isochrones method was also applied by using a stochastic approach. To this aim, the hydraulic conductivity of fault zones was described as a log-normal distribution having the same average values used in the deterministic modeling (Table 1) and a standard deviation equal to 1. In this way, the capture probability for the different time interval was pointed out (Figure 10).

As it is evident from the obtained results, the use of a stochastic approach characterised by a high dispersion of data brings about a significant enlargement of the capture zone, especially along the main fracture zones, which may constitute the main flow direction of the aquifer.

### 5.3. Geomorphological Method

Geomorphological methods take the protective effect of the unsaturated zone into account and assign less signi-

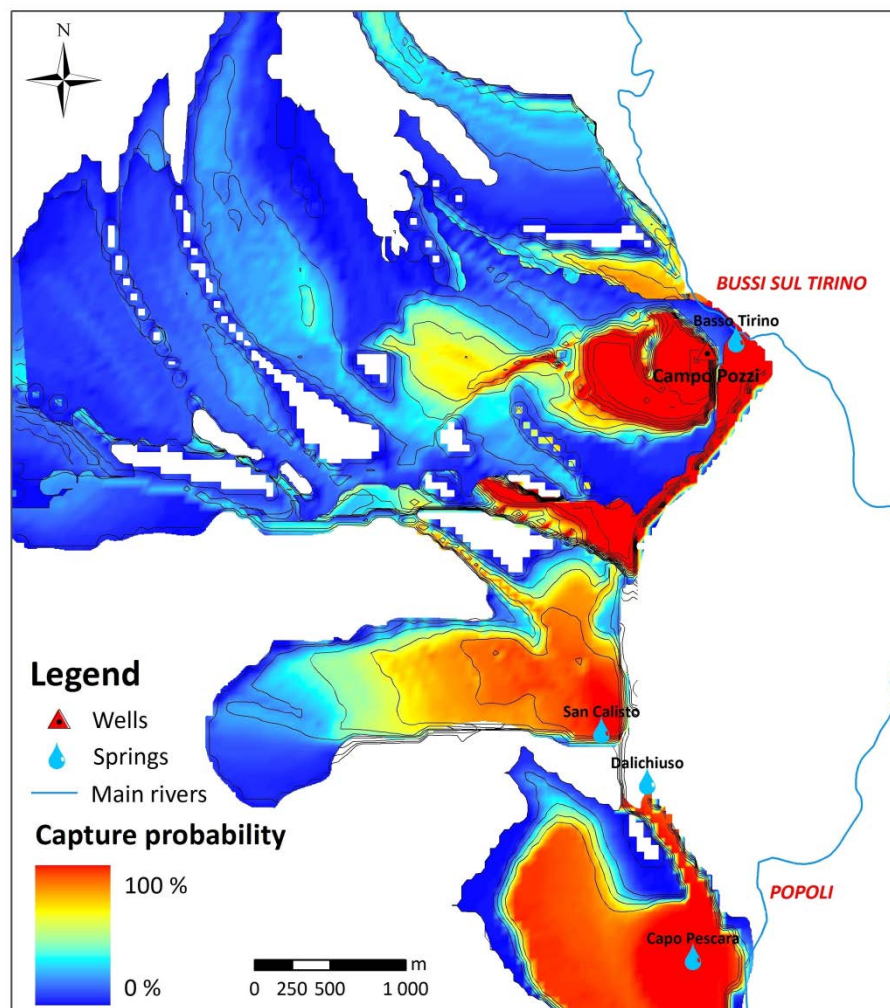
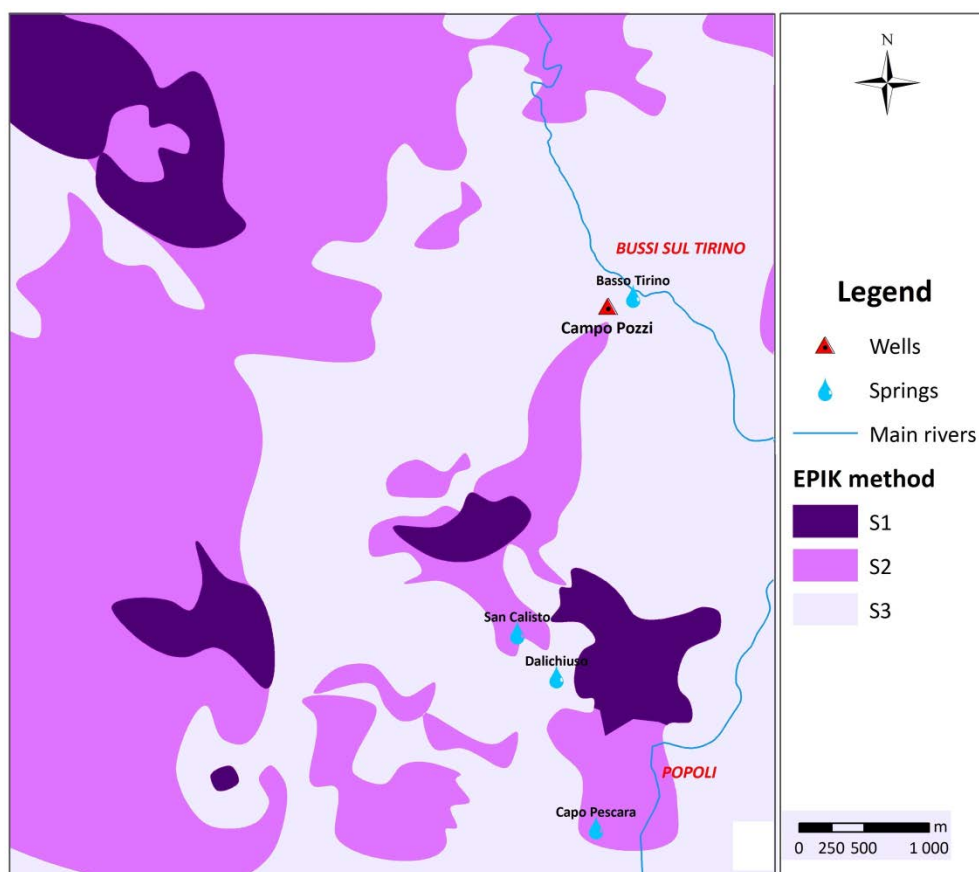


Figure 10. Capture probability for the 365-day isochrones.

ficance to transit times, which are included qualitatively in the parameter evaluation, but are not directly evaluated. These methods are very useful in highly heterogeneous media such as karst or highly permeable fractured aquifers, where the delineation of protection zones based exclusively on transit time in the saturated zone would result in the determination of excessively restrictive protection zones over large distances.

In the present study, the EPIK method [4] was used. It takes into account four factors: epikarst development (E), protective cover (P), infiltration conditions (I) and karst network development (K). Each factor is given a ranking index, according to the results of the field surveys. In particular, the P factor mainly includes the type and thickness of the sedimentary cover overlaying the karst rock. The weight coefficient is then attributed to each of the indexed factors according to their degree of protection. The final protection coefficient is therefore calculated and finally the protection zones were delineated (Figure 11, Table 2).

As it is quite evident, the most restrictive protection zones are located in those areas where infiltration processes are favored by the fracturing and karstic degree of outcropping rocks, and not necessarily near springs and wells.



**Figure 11.** Protection zones delineated according to the EPIK method.

**Table 2.** Groundwater protection zones according to the EPIK method [28].

Zone	Definition	Characteristics
S1	Wellhead protection zone	It must prevent damage to the groundwater supply or artificial recharge facilities, as well as prevent pollution in its immediate surroundings
S2	Inner protection zone	It defines an area suitable for preventing pollution ( <i>i.e.</i> , germs, viruses, and contaminants arising from surface excavation or subsurface works) reaching the groundwater supplies
S3	Outer protection zone	It must provide sufficient space and time for remediation when accidental pollution threatens a groundwater supply

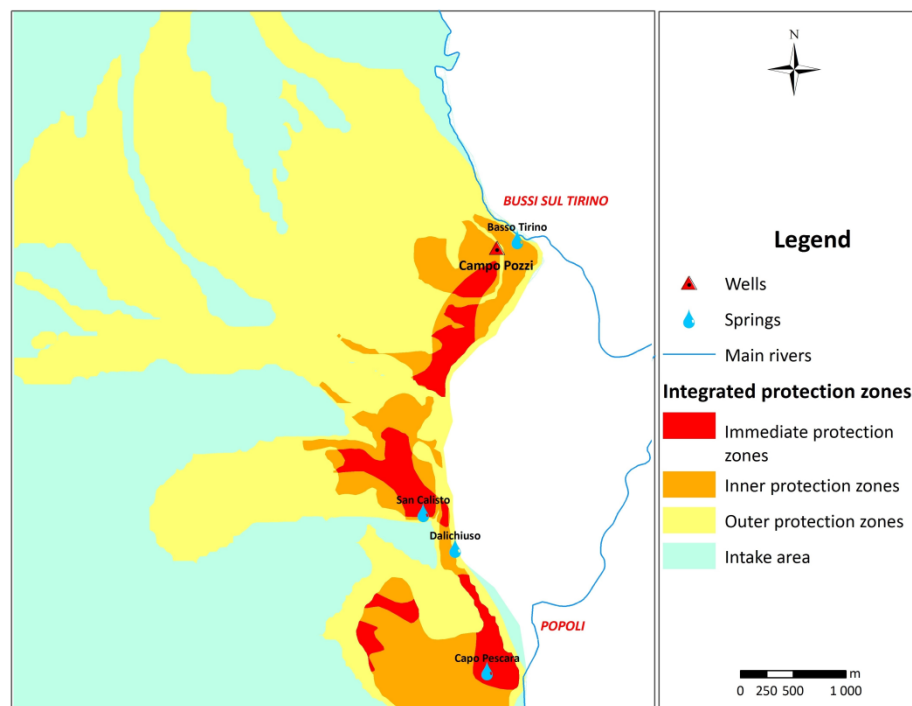


## 6. Discussion of Results

In the present case study, the main disadvantage in the use of the isochrones method for the delineation of protection zones is related to the significant depth of the groundwater table with respect to the land surface, which in some areas is higher than 200 m. Therefore, since the isochrones method is based on groundwater flow modelling within saturated soil, and it does not consider infiltration processes in the not saturated zone, this method could lead to an overestimation of protection zones. On the other hand, in the numerical flow model the recharge is applied to the highest active layer, which often does not correspond to the top layer where the main tectonic and karst features controlling infiltration are present. Therefore, the isochrones method could even underestimate the vulnerability of some areas, especially if these areas are not close to springs and wells.

To overcome these limitations, results of the two methods were finally integrated (Figure 12). At this aim, the 365-day probabilistic simulation was considered and the following criteria were chosen (Table 3):

- the immediate protection zone corresponds to areas where the capture probability is higher than 70% and contaminants can reach the groundwater ( $S_1$  and  $S_2$  of EPIK method);
- the inner protection zone corresponds to areas where the capture probability is higher than 70% even if a good protection of the aquifer is guaranteed ( $S_3$  zone of EPIK method) or areas having quite a lower capture probability (in between 40% and 70%) but with a high vulnerability of the aquifer (EPIK zone  $S_1$  and  $S_2$ );
- the outer protection zone corresponds to areas where the 60-day capture probability is lower than 40% or areas having where the capture probability is in between 40% and 70% by the aquifer is locally protected ( $S_3$  of EPIK method).



**Figure 12.** Protection zones delineated by integrating the isochrones methods with the geomorphological one.

**Table 3.** Criteria applied to integrate isochrones and geomorphological methods.

Capture probability (%)	EPIK zones	Protection zones
>70	$S_1/S_2/S_3$	Immediate protection zone, Inner protection zone
$40 < p < 70$	$S_1/S_2/S_3$	Inner protection zone, Outer protection zone
$0 < p < 40$	$S_1/S_2/S_3$	Outer protection zone

## 7. Conclusions

On the strength of a new fine-scale hydrogeological conceptual model of the discharge zone of the Gran Sasso aquifer, this study allowed the delineation of protection zones for one of the most important carbonate aquifers in Italy. In particular, the study demonstrates the necessity of combining detailed geomorphological analysis with groundwater modeling to delineate proper protection zones for springs and wells in the study area.

Different methods were actually developed to delineate protection zones, both using groundwater flow modeling and geomorphological analysis. Different approaches obviously gave very different results in term of location and dimension of protection zones. These great differences arise from the assumptions of the applied methods, which do not seem to be completely suitable for the specific case study. To overcome these limits, an integration between isochrones and geomorphological method is then pointed out allowing delineating protection zones, which take into account both filtration in saturated rock mass and infiltration processes in vadose zone.

## Acknowledgements

The Authors thank the TOTO Holding S.p.a. for its economic contribution to the subsurface investigations and laboratory analysis. The Authors also wish to thank their colleagues (*i.e.* prof. Marco Petitta) who had previously studied the Gran Sasso aquifer and who put their knowledge at our disposal.

## References

- [1] Kacaroglu, F. (1999) Review of Groundwater Pollution and Protection in Karst Areas. *Water, Air and Soil Pollution*, **113**, 337-356. <http://dx.doi.org/10.1023/A:1005014532330>
- [2] Scesi, L. and Gattinoni, P. (2009) *Water Circulation in Rocks*. Springer, London.
- [3] Knochemus, L.A. and Robinson, J.L. (1997) Descriptions of Anisotropy and Heterogeneity and Their Effect on Ground-Water Flow and Areas of Contribution to Public Supply Wells in a Karst Carbonate Aquifer System. *US Geological Survey*, Water Supply Paper 2475.
- [4] Doerfliger, N., Jeannin, P.Y. and Zwahlen, F. (1999) Water Vulnerability Assessment in Karst Environments: A New Method of Defining Protection Areas Using a Multi-Attribute Approach and GIS Tools (EPIK Method). *Environmental Geology*, **39**, 165-176. <http://dx.doi.org/10.1007/s002540050446>
- [5] United States Government (1974) USA Safe Drinking Water Act, Amendments 1986, 1996. Government Printing Office, Washington DC.
- [6] EU (2000) EU Directive 2000/60/EC of the European Parliament and of the Council of the 23 October 2000 on Institution of a Scheme for Communitarian Action for Water.
- [7] EU (2006) EU Directive 2006/118/EC of the European Parliament and of the Council of the 12 December 2006 on the Protection of Groundwater against Pollution and Deterioration.
- [8] Italian Government (2006) Italian Republic Decree 152/06 Norme in Materia Ambientale [Environment Matter Norms], GU 88(95), Rome.
- [9] Vezzani, L. and Ghisetti, F. (1998) Carta Geologica Dell'Abruzzo, a Scala 1:100,000 [Geological Map of Abruzzo, Scale 1:100,000]. S.EL.CA., Florence.
- [10] Scozzafava, M. and Tallini, M. (2001) Net Infiltration in the Gran Sasso Massif of the Central Italy Using the Thornthwaite Water Budget and Curve-Number Method. *Hydrogeology Journal*, **9**, 461-475. <http://dx.doi.org/10.1007/s100400100151>
- [11] Monjoie, A. (1975) Hydrogéologie du Massif du Gran Sasso (Appenin Central) [Hydrogeology of the Gran Sasso Massif (Central Appennine)]. Extratit de la collection des Publications de la Faculté des Sciences Appliquées de l'Université de Liège, No. 53.
- [12] Petitta, M. and Tallini, M. (2002) Idrodinamica Sotterranea del Massiccio del Gran Sasso (Abruzzo): Nuove Indagini Idrologiche, Idrogeologiche e Idrochimiche (1994-2001) [Groundwater Hydrodynamic of the Gran Sasso Massif (Abruzzo): New Hydrological, Hydrogeological and Hydrodynamic Surveys]. *Società Geologica Italiana*, **121**, 343-363.
- [13] Barbieri, M., Boschetti, T., Petitta, M. and Tallini, M. (2005) Stable Isotopes ( $^2\text{H}$ ,  $^{18}\text{O}$  and  $^{87}\text{Sr}/^{86}\text{Sr}$ ) and Hydrochemistry Monitoring for Groundwater Hydrodynamics Analysis in a Karst Aquifer (Gran Sasso, Central Italy). *Applied Geochemistry*, **20**, 2063-2081. <http://dx.doi.org/10.1016/j.apgeochem.2005.07.008>
- [14] Mazziotti Di Celso, G., Spizzico, M. and Tallini, M. (2005) Studio Idrochimico delle Acque Sorgive dell'Acquifero Carsico del Gran Sasso (Italia Centrale) per un Affinamento del Modello Idrochimico Concettuale [Hydrochemical

- Study of the Karst Gran Sasso Aquifer (Central Italy) in Order to Improve the Conceptual Hydrochemical Model]. *Giornale di Geologia Applicata*, **2**, 420-428.
- [15] Adinolfi Falcone, R., Falgiani, A., Parisse, B., Petitta, M., Spizzico, M. and Tallini, M. (2008) Chemical and Hysotopic ( $\delta^{18}\text{O}\text{‰}$ ,  $\delta^2\text{H}\text{‰}$ ,  $\delta^{13}\text{C}\text{‰}$ ,  $^{222}\text{Rn}$ ) Multi-Tracing for Groundwater Conceptual Model of Carbonate Aquifer (Gran Sasso INFN Underground Laboratory—Central Italy). *Journal of Hydrology*, **357**, 368-388. <http://dx.doi.org/10.1016/j.jhydrol.2008.05.016>
- [16] Boni, C., Pianelli, A., Pierdominici, S. and Riisi, M. (2002) Le Grandi Sorgenti del Fiume Tirino (Abruzzo) (The Large Spings of the Tirino River). *Memorie delle Società Geologica Italiana*, **121**, 411-431.
- [17] ISPRA (2006) Carta Geologica d'Italia—Foglio n. 360—Torre de Passeri, Scala 1:50,000 (Geological Map of Italy—Sheet n. 360, Scale 1:50,000). CARG Project.
- [18] ISPRA (2006) Carta Geologica d'Italia—Foglio n. 369—Sulmona, Scala 1:50.000 (Geological Map of Italy—Sheet n. 369, Scale 1:50,000). CARG Project.
- [19] Bear, J. (1972) Dynamics of Fluids in Porous Media. Elsevier, New York.
- [20] Bear, J. and Berkowitz, B. (1987) Groundwater Flow and Pollution in Fractured Rock Aquifers. In: Nowak, P., Ed., *Development in Hydraulic Engineering*, Elsevier, New York, 175-238.
- [21] Harbaugh, A.W., Banta, E.R., Hill, M.C. and McDonald, M.G. (2000) MODFLOW-2000, the US Geological Survey Modular Ground-Water Model—User Guide to Modularization Concepts and the Ground-Water Flow Process. US Geological Survey, Open-File Report 00-92.
- [22] Bradbury, K.R., Muldoon, M.A., Zaporozec, A. and Levy, J. (1991) Delineation of Wellhead Protection Areas in Fractured Rocks. Technical Guide Document, US EPA, Washington DC.
- [23] Robinson, N. and Barker, J. (2000) Delineating Groundwater Protection Zones in Fractured Rock: An Example Using Tracer Testing in Sandstone. *Tracer and Modeling in Hydrogeology*, **262**, 91-96.
- [24] Zwahlen, F., Ed. (2003) Vulnerability and Risk Mapping for the Protection of Carbonate (Karst) Aquifers. Final Rep COST620.
- [25] Civita, M.V. (2008) An Improve Method for Delineating Source Protection Zones for Kasrt Springs Based on Analysis of Recession Curve Data. *Hydrogeology Journal*, **16**, 855-869.
- [26] Pochon, A., Tripet, J.P., Kozel, R., Meylan, B., Sinreich, M. and Zwahlen, F. (2008) Groundwater Protection in Fractured Media: A Vulnerability-Based Approach for Delineating Protection Zones in Switzerland. *Hydrogeology Journal*, **16**, 1267-1281. <http://dx.doi.org/10.1007/s10040-008-0323-0>
- [27] Kavouri, K., Plagnes, V., Tremoulet, J., Dorflinger, N., Rejiba, F. and Marchet, P. (2011) PaPRIKa: A Method for Estimating Karts Resource and Source Vulnerability—Application to the Ouyssse Karst System (Southwest France). *Hydrogeology Journal*, **19**, 339-353.
- [28] WPO (1998) Water Protection Ordinance of 28 October 1998 (814.201). UNECE, Geneve.



Scientific Research Publishing (SCIRP) is one of the largest Open Access journal publishers. It is currently publishing more than 200 open access, online, peer-reviewed journals covering a wide range of academic disciplines. SCIRP serves the worldwide academic communities and contributes to the progress and application of science with its publication.

Other selected journals from SCIRP are listed as below. Submit your manuscript to us via either [submit@scirp.org](mailto:submit@scirp.org) or [Online Submission Portal](#).

