

# Sea-Port Operational Efficiency: An Evaluation of Five Asian Ports Using Stochastic Frontier Production Function Model

Otieno Robert Kennedy<sup>1</sup>, Khin Lin<sup>1</sup>, Hualong Yang<sup>1\*</sup>, Banomyong Ruth<sup>2</sup>

<sup>1</sup>Transportation Management College, Dalian Maritime University, Dalian, China; <sup>2</sup>Department of International Business, Logistics & Transport, Thammasat University, Bangkok, Thailand.

Email: \*yanghualong@dlnu.edu.cn, yang\_hualong02@126.com, {robertko78, khinlinmmu68}@gmail.com, ruth@banomyong.com

Received April 25<sup>th</sup>, 2011; revised June 3<sup>rd</sup>, 2011; accepted June 23<sup>rd</sup>, 2011.

## ABSTRACT

*Sea-port operational efficiency is critical factor for handling of goods in the international supply chains, and is viewed to impact transportation and logistics which play an important role in trade exchange with other countries. It is important to evaluate operational efficiency of sea-ports to reflect their status and reveal their position in this competitive environment. Moreover, knowing impacts of efficiency of sea-ports on the supply chain is vital for business survival. This study uses stochastic frontier and inefficiency models to analyze sea-port operational efficiency and Delphi technique to seek expert respondents' opinion on its characteristics. The research also uses structural equation modeling to build a model of sea-port operational efficiency as a further step to examine the significance of the characteristics. The results of this study emphasize the need to improve sea-port operational efficiency, and indicate which characteristics should be given more attention.*

**Keywords:** *Sea-port Operational Efficiency, Supply Chain, Stochastic Frontier Model, Delphi Technique, Asian Ports*

## 1. Introduction

Sea-ports have been considered to be important parts of international supply chains [1]. They hold a very important role and are the most critical nodes in the supply chain [2]. It is widely believed that sea-ports form a vital link in the overall trading chain [3]. Sea-ports are a component of freight distribution as they offer a maritime to land interface for cross-border businesses. Therefore, efficiency of sea-port operation is vital for supply chains.

A lot of research has been done in the area of sea-port operational efficiency. Many of such research dwell on tactical means of bolstering sea-port operational efficiency [3-6]. Some researchers regard sea-port as Third Party Logistics (3PL) provider that intervenes in a series of different companies and supply chains [7]. Three different channels: trade channel, logistics channel and supply chain channel were identified by [7] as a new framework of measuring performance of sea-ports. However, there still exists a gap in assessing the sea-port operational efficiency. The question: "What characteristics are key to improving sea-port operational and to what extent they can bolster efficiency?" has not been adequately

addressed in literature. Some research dwell on one or two aspects at a time leaving out other aspects.

This research seeks to address this concern by examining sea-port operational efficiency, establishing determinants of such efficiency for its evaluation and building its model. Since various aspects of efficiency do not lend themselves to precise analytical techniques but can benefit from subjective judgments on collective basis [8], Delphi technique was chosen as a feasible method for identifying key factors that are significant to sea-port operational efficiency.

The paper will be comprised of five main sections. Following the introductory section, the paper will present reviews on related literature concerning sea-port operational efficiency and logistics flexibility. The section will be devoted to defining it and outlining its theoretical precepts. Next section will present the selected research methodology followed by results of the research as well as their analyses and related discussions. The paper will further present implications of research findings and discussions of limitations of the current study as well as recommendations for further research. Finally, there will

be summary and conclusions.

## 2. Literature Review

Sea-port operation is defined as cargo handling (or moving) activity, performed by a designed company (gang or team), consisting of labor and machines. It is also defined as the operation of a wharf and other port facilities, operation of port passenger transport service, operation of cargo loading/unloading, haulage and warehousing services within a port area and so on [9].

Presently, there is difficulty in defining port efficiency due to non-universal definition of what indicates an efficient port or what port efficiency entails [10]. An efficient sea-port should be one that is competent in operations [10]. Based on this definition, efficiency of sea-port operations is determined by duration (*time*) of ship's stay in a port, quality of cargo handling and quality of service to inland transport vehicle during passage through the port [11]. Quality of cargo handling is in the form of berth throughput [10] and quality of service to inland vehicle is dependent on port infrastructure. Productivity has been identified as a measure of sea-port operational efficiency [3].

Many researchers have used various approaches to evaluate sea-port efficiency. Annual firm level surveys have been employed as indicators of sea-port operational efficiency, but "there was almost no information on how port efficiencies evolve over time from these studies" [11, p. 3]. A number of studies have used data on inputs, outputs and production function theory, by means of data envelopment analysis (DEA), to estimate the most efficient production frontier across a set of sea-ports [6,12, 13]. The approaches using this method have the advantage of economies of scale derived from econometric evidence but the drawback is that they typically assume constant return to scale [11]. To address the issue of error estimation and statistical confidence, another approach, econometric estimation of cost functions, was developed by [11]. The method, however, has "difficulties with data requirements, particularly measurement of labor, capital and other requirements" [11, p. 5] which limit its application to many sea-ports at a time.

Some research has been done on the contribution of port ownership to efficiency. Transformation from public to private ownership is believed to improve sea-port operational efficiency even without change in level of competition [14]. Some researchers contended this position [14] and have opinion that principal-agent problems may also arise in the private sector as a result of capital market imperfections [3]. Reference [15] applied stochastic production function to evaluate technical efficiency but did not show that port ownership has significant effects

on sea-port operational efficiency. Moreover, [16] developed stochastic frontier model and carried out comparison of efficiency level of 40 container terminals, but also failed to establish the relationship between terminal ownership, operations and efficiency level. On the contrary, a number of studies have shown relationship between port ownership and sea-port operational efficiency [3,11,17]. Relative efficiency of a number of Asian ports was assessed by [17] using a combination of cross-sectional and panel data versions of stochastic frontier model and the finding was that there seems to be some support that privatization should have some relationship with improvement in efficiency [3]. These efforts by the researchers show that port ownership is a likely determinant of operational efficiency.

It has been found that size of sea-port has positive effects on its efficiency [18]. Also, it has been shown that ports with larger throughput seem to have certain performance advantage over those with smaller throughput [17]. In research on 15 sea-ports [19] showed that port efficiency has no clear relationship with its size and function (hub or feeder) [3].

## 3. Methodology and Data

### 3.1. Methodology

Researchers identified research tools and strategies that will be employed and related their application to specified research objectives. Questions to be addressed by this research set up the direction that the research will take and are tied to research objectives. The research questions were: 1) What are the operational efficiencies of a set of sea-ports? 2) What are the key characteristics of sea-port operational efficiency? 3) What is the model of sea-port operational efficiency?

Based on the research questions, the objectives of this research were to: evaluate operational efficiencies of a number of selected sea-ports; examine the characteristics of sea-ports' operational efficiency and build its structural model.

Stochastic frontier production function model in [19] was used to evaluate the efficiency of selected sea-ports. This method was selected because of its ability to estimate technical inefficiency [19] and simultaneously estimates parameters of an inefficiency model with those of stochastic frontier production model [3]. Delphi technique was employed to seek expert respondents' opinion on the characteristics of sea-port operational efficiency.

#### 3.1.1. Stochastic Frontier and Inefficiency Models

Stochastic frontier, also known as composed error, model for production function  $y_i = g(x_i, \beta) + \varepsilon_i$  ( $i = 1, 2, 3, \dots, N$ ), [20] where  $y_i$  is the output for observation  $i$ ,

$x_i$  is vector of inputs for observation  $i$ ,  $\beta$  is the vector of parameters,  $\varepsilon_i$  is error term for observation  $i$ , postulates that the error term  $\varepsilon_i$  is made up of two independent components,  $\varepsilon_i = v_i - u_i$  where,  $v_i$  is a two-sided error term representing statistical noise in any relationship;  $u_i \geq 0$  is one-sided error term representing technical inefficiency.

The exponential form of the proposed model giving production function in Equation (1) as,

$$y_{it} = \exp(x_{it}\beta + v_{it} - u_{it}) \quad (1)$$

where,  $y_{it}$  is the production at the  $t^{\text{th}}$  observation ( $t = 1, 2, \dots, T$ ) for the  $i^{\text{th}}$  firm ( $i = 1, 2, \dots, N$ );  $x_{it}$  is logarithm of input variables  $v_{it}$  is random error assumed to be truncated normal distribution with respect to mean and variance,  $N(0, \sigma_v^2)$ , and independently distributed of non-negative random variable,  $u_{it}$ . The truncated normal distribution using Wald or generalized likelihood-ratio test [20] is specified in this research to justify the selection of distribution form for technical inefficiency effects [3].

Regression of effects of inefficiency on the variables that explain inefficiency is given by Equation (2) as,

$$u_{it} = z_{it}\delta + W_{it} \quad (2)$$

where  $z_{it}$  is a vector of explanatory variables;  $\delta$  is a vector of unknown scalar parameters;  $W_{it}$  is truncation of normal distribution,  $N(0, \sigma_v^2)$ , such that the point of truncation is such that point of truncation is  $-z_{it}\delta$  [3].

To avoid serial correlation among random errors, this part of the research will employ cross-sectional data and use cross-sectional analysis to address concerns about correlations of inefficiencies and input choices [15,17]. We propose maximum likelihood method for simultaneous estimation of parameters of stochastic frontier model and those of technical inefficiencies model [3]. The likelihood function is expressed in terms of variance parameters  $\sigma_s^2 = \sigma_v^2 + \sigma^2$  and  $\gamma = \sigma^2 / \sigma_s^2$  inefficiency can therefore be defined in terms of the ratio between observed output and potential output given input  $x_{it}$  as,

$$TE_{it} = y_{it} / \exp(x_{it}\beta + v_{it}) = \exp(-z_{it}\delta - W_{it}) \quad (3)$$

### 3.1.2. Delphi Technique

Delphi, a systematic interactive forecasting technique which depends on a panel of independent, carefully selected expert respondents [21], was used to identify characteristics of efficient sea-port operations. Delphi was used because researchers felt that expert opinion was the best available evidence. The method has the ability to provide anonymity to respondents and controlled feedback process as well as allows application of variety of statistical analysis techniques to interpret data [8].

A group of selected 32 expert respondents in port management, shipping and logistics field drawn mainly from China, Hong Kong, Singapore and Korea participated in the study by answering questionnaires sent through email. Sample size was kept reasonably small, so as to do justice to the rich evidence given by qualitative studies [22]. **Table 1** shows sample of expert respondents who participated in this part of the research.

The process was carried out in three rounds as recommended by literature [21]. Caution was exercised to deal with concerns of Delphi such as time consumption [21], molding of opinion, subjectivity versus objectivity and the assumption that the participants have equivalent knowledge and experience [21].

Round 1 questionnaire was unstructured with questions and statements phrased to increase chances of accuracy of responses [21]. In Round 1 the respondents were asked to identify key characteristics of sea-port operational efficiency and provide their comments as to why they thought the identified items were important.

After Round 1 deadline, two weeks as recommended by literature between rounds [21], results were analyzed and a summary of the same was included in the design of Round 2 questionnaire. A review of questionnaire statements was done to remove any possible influences by monitor team's views [9]. The questionnaire was sent to the experts to refine ideas, explore agreements and disagreements and to probe strengths and weaknesses of opinions.

After deadline of Round 2, responses were analyzed and Round 3 questionnaire was prepared. In this round respondents were asked to revise judgments or specify why they remain out of consensus [21]. Round 2 and Round 3 question was,

“To what extent do you agree that the following factors contribute to sea-port operational efficiency? Please, provide your comments or additional factors that in your view are significant to sea-port efficiency.”

The experts were required to rate the characteristics using Likert-scale (1 = strongly disagree, 2 = disagree, 3 = moderately agree, 4 = strongly agree, 5 = very strongly agree).

### 3.2. Data

Since the main activity of container ports is handling containers only one output will be identified in this study. The total throughput is a good measurement for the output of a container terminal [3]. **Table 2** shows container throughput of five container ports being investigated.

Literature argues that only the input factors: quay length; terminal area; and the number of quay cranes are relevant variables affecting container terminal operational efficiency [17]. **Table 3** shows these input factors

**Table 1. Sample of Delphi respondents.**

No. of port/firm employees	No. of employees represented	% employees the ports/firms in all	Respondents expected ( $f_e$ )	Respondents who participated ( $f_o$ )
100 - 249	1,505	43	22	14
250 - 499	770	22	11	7
500 - 999	525	15	8	5
1,000+	700	20	10	6
$\chi^2$ test ( $=7.089, df=3, p=0.0691$ )				
<b>Job title</b>				
CEO/president	805	23	11	7
Vice president	525	15	8	5
Manager	1,890	54	27	17
Director	280	8	4	3
$\chi^2$ test ( $=6.533, df=3, p=0.0884$ )				
Total	3,500	100	50	32

$\chi^2$  is obtained using the formula:  $\frac{\sum(f_e - f_o)^2}{f_e}$

**Table 2. Port container throughput in TEUs.**

Asian Port	2005	2006	2007	2008	2009	2010
Singapore	23,192,000	24,792,400	27,932,000	29,918,200	25,866,400	28,400,000
Hong Kong	22,602,000	23,538,580	23,998,000	24,248,400	21,040,000	23,699,000
Shanghai	18,084,000	21,710,000	26,168,000	28,006,000	25,002,000	29,100,000
Shenzhen	16,197,173	18,468,900	21,099,000	21,416,000	18,250,100	22,510,000
Busan	11,840,000	12,030,000	13,261,000	13,425,000	11,954,000	14,180,000

Sources: China Port Industry Report, 2010; Container Throughput Hong Kong [available online] [www.pdc.gov.hk/docs/Hkport.pdf](http://www.pdc.gov.hk/docs/Hkport.pdf). United Nations (2010) Review of Maritime Transport, Chapter 5.

**Table 3. Input factors of five major Asian ports.**

	Quay Length (km)	Terminal Area (hectares)	No. of Quay cranes
Singapore	16.945	600	190
Hongkong	19	285	93
Shanghai	20	401	240
Shenzhen	5.543	344	71
Busan	9.95	292.5	70

Source: Global Container Terminal Operators Annual Review, 2010.

for the five ports studied.

We will also use the port ownership [3] to analyze port ownership structure. According to [3] the degree of pri-

vate sector participation is given as 0/3 for purely public ownership; 1/3 for public regulator and landownership while private sector acts as operators; 2/3 is given for public being regulator while the private sector perform the role of landowner and operator and 3/3 is given for purely private ownership.

Cobb-Douglas and Translog functional forms for stochastic production function forms are tested based on maximum likelihood method by applying FRONTIER package version 4.1. The following, Equation (4), is the stochastic production function to be tested,

$$\ln Y_i = \beta_0 + \beta_1 \ln(X_{1i}) + \beta_2 \ln(X_{2i}) + \beta_3 \ln(X_{3i}) + \beta_4 \ln(X_{1i})^2 + \beta_5 \ln(X_{2i})^2 + \beta_6 \ln(X_{3i})^2 + \beta_7 \ln(X_{1i})\ln(X_{2i}) + \beta_8 \ln(X_{1i})\ln(X_{3i}) + \beta_9 \ln(X_{2i})\ln(X_{3i}) + v_i - u_i \quad (4)$$

Technical inefficiencies are defined by,

$$u_i = \delta_0 + \delta_1 z_{1i} + \delta_2 z_{2i} + \delta_3 z_{2i}^2 + W_i \quad (5)$$

where,

ln: natural logarithm;

$Y_i$ : total throughput in TEU on container port (terminal)  $i$  in a given year;

$X_{1i}$ : terminal quay length in metres of port  $i$ ;

$X_{2i}$ : terminal area in hectares of port  $i$ ;

$X_{3i}$ : number of quay cranes used in port  $i$ ;

$z_{1i}$ : size of port  $i$ , dummy binary variable that distinguishes whether annual port throughput exceeds 15 million TEUs or not (*i.e.* 1 if throughput is  $\geq 15$  million TEUs, and 0 otherwise);

$z_{2i}$ : the extent of private sector participation.

Generalized likelihood method was used to test functional forms. The method is as follows, Likelihood Ratio  $LR = -2\{\ln[L(H_0)] - \ln[L(H_1)]\}$ , where  $L(H_0)$  and  $L(H_1)$  are values of likelihood function under null hypothesis ( $H_0: \beta_4 = \beta_5 = \beta_6 = \beta_7 = \beta_8 = \beta_9 = 0$ ) and the alternative  $H_1$ , respectively. The presence of inefficiency effects of  $u_i$  was examined using one-sided generalized likelihood-ratio statistics [23,24].

## 4. Results, Discussions and Structural Model

### 4.1. Results of Stochastic Production and Inefficiency Models

Empirical results based on data from the five sea-ports are shown in **Table 4**. All beta were statistically significant at  $p < 5\%$ , showing that the three inputs: total quay length, terminal area and quay cranes, have significant effects on production, consistent with result of [3] and [18]. The estimate of  $\epsilon$  is 0.8283 implying that 82.83% of the total variability is associated with technical efficiency of production and it is very significant,  $p < 1\%$ .

The coefficient,  $\delta_2$ , is negative implying that there is positive relationship between technical efficiency and privatization in sea-ports. These results concur with those found by [3]. The coefficient  $\delta_3$  is positive implying an inverted U-shaped relationship of  $z_{2i}^2$  with sea-port privatization. The best level of privatization for the seaports

studied is given by:  $z_{2i}^2 = \left| \frac{\delta_2}{2\delta_3} \right|$  obtained from

$$\frac{\partial U_i}{\partial z_{2i}} = \delta_2 + 2\delta_3 z_{2i} = 0.$$

**Table 4. Final estimates of time-invariant technical efficiencies for period 2005 to 2010.**

Stochastic Frontier Model				Inefficiency Model			
	Coefficient	Standard error	t-ratio		Coefficient	Standard error	t-ratio
$\beta_0$	13.758	2.214	6.213	$\delta_0$	0.457	0.205	2.229
$\beta_1$	0.172	0.078	2.202	$\delta_1$	0.609	0.195	3.123
$\beta_2$	0.278	0.124	2.242	$\delta_2$	0.667	0.800	0.833
$\beta_3$	0.010	0.003	3.333	$\delta_3$	0.444	0.871	0.510
Variance parameter $\sigma^2$	0.0732	0.0429	1.7068	Variance parameter $\gamma$	0.8283	0.1080	7.6696

Note: approximate critical value for t-ratio at  $p = 5\%$  is 2.131 and at  $p = 1\%$  is 2.947 log likelihood function = 17.332313; LR test of the one-sided error = 23.041894; [note that this statistic has a mixed chi-square distribution]; number of iterations = 13; (maximum number of iterations set at: 100).

Substituting the values of the coefficients gives the best level of privatization as 0.751 which falls between Private/Public (0.667) and Private (1.000). The estimate of coefficient of port size,  $\delta_1$  is negative meaning that large sea-ports are more efficient than smaller ones.

Technical efficiencies using production function of the ports were found and the yearly trends are as in **Figures 1 and 2**. In **Figure 1** inefficiency effects were considered, for  $H_0 (\delta_1 = \delta_2 = \delta_3 = 0)$  and for ownership effects, for  $H_0 (\delta_2 = \delta_3 = 0)$  the results are as in **Figure 2**. Since null hypotheses: no inefficiency,  $\delta_0 = \delta_1 = \delta_2 = \delta_3 = 0$ , Likelihood Ratio (LR) = 30.5544 greater than critical value  $\chi^2 (5\%) = 10.371$ ; no inefficiency effects,  $\delta_1 = \delta_2 = \delta_3 = 0$ , LR = 21.1298 greater than critical value  $\chi^2 (5\%) = 7.81$  and ownership effects (no privatization),  $\delta_2 = \delta_3 = 0$ , LR = 23.0419 greater than critical value  $\chi^2 (5\%) = 5.99$ , the null hypotheses were rejected [24].

When inefficiency effects are considered, port of Singapore is found to be more efficient than that of Shanghai that catches up and overtakes it in the second half of

the year 2009.

However, when ownership effects are considered, the port of Shanghai overtakes that of Singapore just before mid 2006, to be the third most efficient after Shenzhen and Hong Kong. Between 2008 and 2009 all the trends were on downward trend. This is possibly due to global recession. After 2009, the trends were upwards with Shenzhen having highest rise in efficiency followed by Shanghai port. Time invariant efficiencies were found as follows: Singapore, 0.9116; Hong Kong, 0.9443; Shanghai, 0.9029; Shenzhen, 0.9412 and Busan, 0.5963. Mean technical efficiency for all the ports was 0.8593.

**4.2. Results of Delphi Survey**

**4.2.1. Round 1**

Round 1 responses were analyzed after all the 32 experts had submitted their responses (after a period of two weeks). Items generated by respondents were checked for their similarity and were refined with great care to avoid losing their initial meanings. Finally, a summary of eight items identified by respondents was drawn. Items generated in Round 1 were: “Quality of port infrastructure *i.e.* informat ion systems, storage area” (PE1); “Size of sea-port, terminal area, quay length, quay cranes, berths” (PE2); “Quality of cargo/container handling” (PE3); “Port throughput” (PE4); “Measures to reduce ship turn-round time” (PE5); “Level of private sector participation” (PE6); “Nature of value added services” (PE7) and “Port charges and other costs incurred by port users” (PE8).

**4.2.2. Round 2**

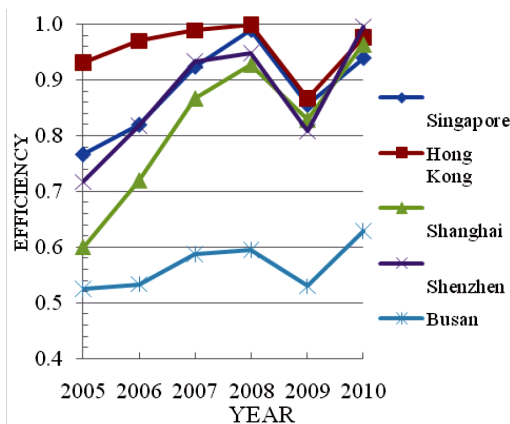
The results of Round 2 are presented in **Table 5**. Literature recommends using median with inter-quartile range when applying Likert scale [25]. The results show that both PE1 and PE8 were rated highest followed by PE3. The range of respondent rating was same for all the characteristics except PE2 whose ratings had inter-quartile range of 1.75 showing that there was comparatively less consensus on its level of contribution.

**4.2.3. Round 3**

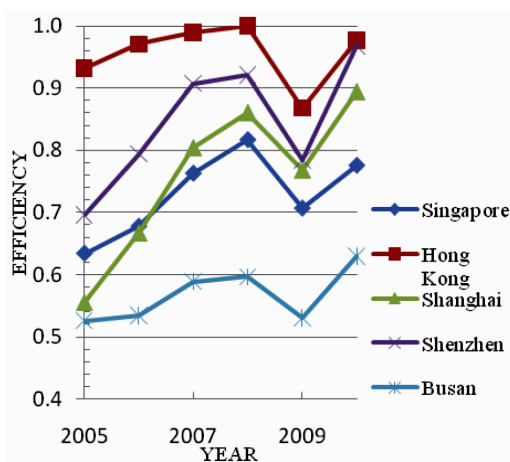
The Round 3 results in **Table 5** show that PE1, PE3 and PE8 were rated highest, the rating of PE3 improved from median of 4.5 in Round 2 to 5 in Round 3. Consensus also improved for both PE2 and PE4, evidenced by lower inter-quartile range in Round 3 than in Round 2. These results show that respondents either strongly or very strongly agree that the factors contribute to efficiency of sea-port operations.

**4.3. Structural Model**

Model of sea-port operational efficiency was built using



**Figure 1.** Technical efficiencies (inefficiency effects).



**Figure 2.** Technical efficiencies (ownership effects).

**Table 5. Median and inter-quartile range of Rosunds 2 and 3 responses.**

Item	Round 2				Round 3			
	Median	Quartiles		Inter-quartile range	Median	Quartiles		Inter-quartile range
		First	Third			First	Third	
PE1	5	4	5	1	5	4	5	1
PE2	4	3	4.75	1.75	4	3.25	4.75	1.5
PE3	4.5	4	5	1	5	4	5	1
PE4	4	3	4	1	4	4	4.75	0.75
PE5	4	4	5	1	4	4	5	1
PE6	4	4	5	1	4	4	5	1
PE7	4	4	5	1	4	4	5	1
PE8	5	4	5	1	5	4	5	1

the characteristics. Testing of model fit was done using Normed Fit Index (NFI), Incremental Fit Index (IFI), Tucker-Lewis Index (TLI), Root-Mean-Square Error Approximation (RMSEA) and Standardized Root Mean Residual (SRMR). NFI, IFI and TLI  $\geq 0.9$  imply acceptable model.

RMSEA and SRMR  $\leq 0.08$  show an acceptable model. For RMSEA and SRMR = 0.00 the model is perfect [26]. Factor of loading for characteristics in model should be  $\geq 0.7$  for acceptable models [27].

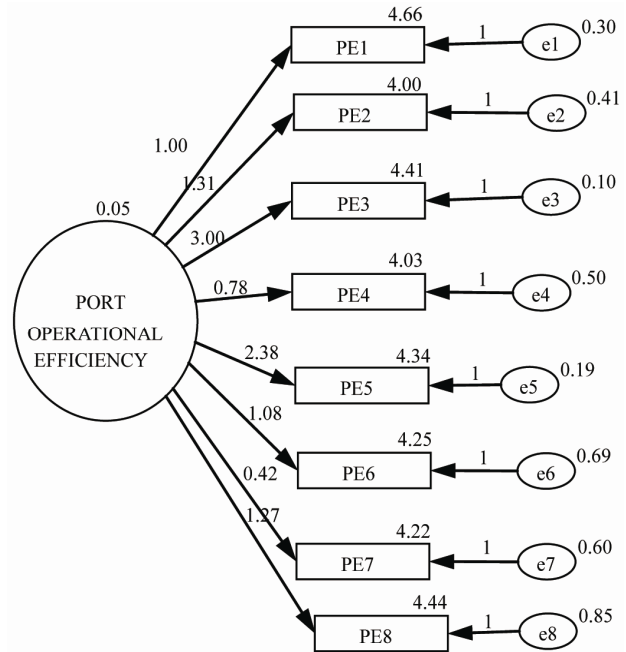
Reliability of characteristics and that of model estimates was tested by determining Cronbach’s alpha [28]. Reliability occurs for Cronbach’s alpha  $\geq 0.7$  [26]. Cronbach’s alpha for characteristics in the models was 0.735.

Convergent validity of model estimates was measured by Average Variance Extracted (AVE) with acceptable values of  $\geq 0.5$  [27]. The factors of loading,  $\lambda$ , necessary for calculation of AVE were obtained using principal component analysis (PCA) extraction capability of SPSS® software version 19.

**4.3.1. Structural Model of Port Operational Efficiency**

Figure 3 shows model of sea-port operational efficiency. The characteristic “Quality of cargo-handling” (PE3) and “Port throughput” (PE5) have the highest regression weights of 3.00 and 2.38, respectively. The mean rating by respondents appear as 4.41 and 4.34 respectively for the two characteristics with their residual error terms e3 and e5 being the lowest at 0.10 and 0.19 respectively.

Model fit indices were as follows: NFI = 0.901; IFI = 1.101; TLI = 1.187; RMSEA = 0.000; SRMR = 0.0307;  $\chi^2 \{N = 32, df = 8, p = 0.0342\} = 16.637$ . The fit indices show that the model is acceptable.



**Figure 3. Structural model of port efficiency.**

**5. Implications of Research Findings**

The empirical results provide some valuable implications for port authorities, operators, shipping companies and logistics providers. It is found that, generally, large sea-ports are more efficient than smaller ones possibly because of the quality of port infrastructure, storage and cargo-handling. Apart from port size, the level of privatization is also an important factor for efficiency. It is, however, noted that full privatization is not effective in increasing efficiency of port operations; meaning that the



relationship between private sector participation and sea-port operational efficiency is not linear. It is shown that the best extent of privatization is between public/private (0.67) and Private (1.00) mode, according to literature. This means that private sector participation should be limited to “landowner and operator” functions while port authorities should take the role of regulator.

Survey results for Delphi technique show that the respondents had consensus that all the eight factors identified (see **Table 5**) were important determinants of operational efficiency of sea-ports. They had opinion that port infrastructure, quality of cargo-handling and port charges including other costs are the top ranking determinants of port efficiency. These results imply that port authorities should charge reasonable amounts since shippers use costs in selecting port to use, therefore it is a measure of competitiveness as supported by [3].

Model results in show that sea-port management need to focus mainly on boosting quality of container-handling, putting measures aimed at reducing ship turn-round time, improving quality of port infrastructure and equipment. This is evidenced by the regression weights of the characteristics in the model.

## 6. Limitations and Further Research

It is worth noting that this research did not examine the effects of cost due to unavailability of data. Another limitation is that analyses were limited to containers and left out cargo which could have provided interesting form of results. The third limitation was that this research relied on Delphi interviews to examine the determinants of efficiency perhaps a different approach could yield another scenario. Further research is therefore recommended to address these issues and shed more light in this area, and possibly with a wide range of ports.

## 7. Summary and Conclusions

The objective of this paper is to evaluate operational efficiencies of a number of selected sea-ports; examine the characteristics significant to sea-ports’ operational efficiency and build a structural model of sea-port operational efficiency. The obtained results provide valuable implications to port authorities, operators and business practitioners depending on port. The results show that port size and infrastructure, private sector participation and quality of both cargo-handling and logistics services are important determinants of efficiency.

## 8. Acknowledgements

We thank the editor in chief and the reviewers very much for their constructive pieces of advice. This research is supported by the National Natural Science Foundation of

China (Grant Nos. 70972008 and 70971014).

## REFERENCES

- [1] B. Slack and A. Fremont, “Transformation of Port Terminal Operations: From the Local to the Global,” *Transport Reviews*, Vol. 25, No. 1, 2005, pp. 117-130.
- [2] L. Wang, “Study of Port Logistics Marketing under the Environment of Supply Chain,” *International Journal of Business and Management*, Vol. 6, No. 3, 2011, p. 267.
- [3] J. Tongzon and W. Heng, “Port Privatization, Efficiency and Competitiveness: Some Empirical Evidence from Container Ports (Terminal),” *Transportation Research, Part A*, Vol. 39, No. 5, 2005, pp. 405-424.
- [4] J. Zhu, “Data Envelopment Analysis with Preference Structure,” *Journal of the Operational Research Society*, Vol. 47, No. 1, 1996, pp. 136-150.
- [5] H. S. Lee, M. T. Chou and S. G. Kuo, “Evaluating Port Efficiency in Asia Pacific Region with Recursive Data Envelopment Analysis,” *Journal of the Eastern Asia Society for Transportation Studies*, Vol. 6, 2005, pp. 544-599.
- [6] K. Lin and H.-L. Yang, “Port Throughput Analysis of China and Five Member Countries of ASEAN,” *International Conference on Intelligent Computation Technology and Automation*, Vol. 2, 2010, pp. 914-917.
- [7] H. A. Linstone and M. Turoff, “The Delphi Method: Techniques and Applications,” Addison-Wesley, Reading, 1975.
- [8] Business Alert—China, “Shenzhen Requires Operation Licence for Port Enterprises,” *Business Alert*, No. 07, July 2004.
- [9] P. A. Osaretin, “Efficient Port Operations and Benefits of Actors—A Case Study of Tin Can Island Port, Nigeria,” Masters Dissertation, Göteborg University, Gothenburg, 2006.
- [10] G. De Monie, “Measuring and Evaluating Port Performance and Productivity,” *CEPAL Review*, No. 99, 2009, p. 173.
- [11] B. A. Blonigen and W. W. Wilson, “New Measures of Port Efficiency Using International Trade Data,” NBER Working Paper No. 12052, 2006.
- [12] J. Tongzon, “Efficiency Measurement of Selected Australian and Other International Ports using Data Envelopment Analysis,” *Transportation Research Part A: Policy and Practice*, Vol. 35, No. 2, 2001, pp. 113-128. doi:10.1016/S0965-8564(99)00049-X
- [13] E. Martinez-Budria, R. Diaz-Armas, M. Navarro-Ibanez, and T. Ravelo-Mesa, “A Study of the Efficiency of Spanish Port Authorities Using Data Envelopment Analysis,” *International Journal of Transport Economics*, Vol. 26, No. 2, 1999, pp. 237-253.
- [14] S. Estrin and V. Perontin, “Does Ownership Always Matter?” *International Journal of Industrial Organization*, Vol. 9, No. 1, 1991, pp. 55-72. doi:10.1016/0167-7187(91)90005-6
- [15] Z. Liu, “The Comparative Performance of Public and



- Private Enterprises,” *Journal of Transportation Economics and Policy*, Vol. 29, No. 3, 1995, pp. 263-274.
- [16] J. Van Den Broeck, G. Koop, J. Osiewalski and J. Steel, “Stochastic Frontier Models: A Bayesian Perspective,” *Journal of Econometrics*, Vol. 61, No. 2, 1994, pp. 273-303. [doi:10.1016/0304-4076\(94\)90087-6](https://doi.org/10.1016/0304-4076(94)90087-6)
- [17] K. Cullinane, D. W. Song and R. Gray, “A Stochastic Frontier Model of the Efficiency of Major Container Terminals in Asia: Assessing the Influence of Administrative and Ownership Structures,” *Transportation Research, Part A*, Vol. 36, No. 8, 2002, pp. 743-62.
- [18] T. Notteboom, C. Coeck, and J. Van Den Broeck, “Measuring and Explaining the Relative Efficiency of Container Terminals by Means of Bayesian Stochastic Frontier Models,” *International Journal of Maritime Economics*, Vol. 2, No. 2, 2000, pp. 83-106.
- [19] G. E. Battese and T. J. Coelli, “A Model for Technique Inefficiency Effects in a Stochastic Frontier Production Function for Panel Data,” *Empirical Economics*, Vol. 20, No. 2, 1995, pp. 325-332. [doi:10.1007/BF01205442](https://doi.org/10.1007/BF01205442)
- [20] T. J. Coelli, D. S. P. Rao, C. J. O’Donnell and G. Battese, “An Introduction to Efficiency and Productivity Analysis,” 2nd Edition, Springer, Berlin, 2005.
- [21] C.-C. Hsu and B. A. Sandford, “The Delphi Technique: Making Sense of Consensus,” *Practical Assessment Research & Evaluation*, Vol. 12, No. 10, 2007, pp. 1-8. <http://pareonline.net/getvn.asp?v=12&n=10>
- [22] J. Ritchie and J. Lewis, “Qualitative Research Practice,” A Guide for Social Science Students.
- [23] T. J. Coelli, “Estimators and Hypothesis Tests for a Stochastic Frontier Function: A Monte Carlo Analysis,” *Journal of Productivity Analysis*, Vol. 6, No. 3, 1995, pp. 247-268. [doi:10.1007/BF01076978](https://doi.org/10.1007/BF01076978)
- [24] D. A. Kodde and F. C. Palm, “Wald Criteria for Jointly Testing Equality and Inequality Restrictions,” *Econometrica*, Vol. 54, No. 5, 1986, pp. 1243-1248.
- [25] N. Mogeey, “So You Want to Use Likert Scale?” 1999. [http://www.icbl.hw.ac.uk/ltidi/cookbook/info\\_likert\\_scale/index.html](http://www.icbl.hw.ac.uk/ltidi/cookbook/info_likert_scale/index.html)
- [26] S. A. Mulaik, L. R. James, J. Van Alstine, N. Bennett, S. Lind and C. D. Stilwell, “Evaluation of Goodness-of-Fit Indices for Structural Equation Models,” *Psychological Bulletin*, Vol. 105, No. 3, 1989 pp. 430-445. [doi:10.1037/0033-2909.105.3.430](https://doi.org/10.1037/0033-2909.105.3.430)
- [27] R. Zinbarg, W. Revelle, I. Yovel and W. Li, “Cronbach’s, Revelle’s and McDonald’s: Their Relations with Each other and Two Alternative Conceptualizations of Reliability,” *Psychometrika*, Vol. 70, No. 1, 2005, pp. 123-133.