

Requirements Analysis: Evaluating KAOS Models

Faisal Almisned, Jeroen Keppens

King's College, London, UK.
Email: faisal.almisned@kcl.ac.uk, jeroen.keppens@kcl.ac.uk

ABSTRACT

Wigmore's charts and Bayesian networks are used to represent graphically the construction of arguments and to evaluate them. KAOS is a goal oriented requirements analysis method that enables the analysts to capture requirements through the realization of the business goals. However, KAOS does not have inbuilt mechanism for evaluating these goals and the inferring process. This paper proposes a method for evaluating KAOS models through the extension of Wigmore's model with features of Bayesian networks.

Keywords: KAOS, Requirements Evaluation, Wigmore's Chart, Bayesian Networks

1. Introduction

The alignment of requirements analysis to business goals and objectives is essential for the return of investment of any project. KAOS is a goal driven requirements analysis method that defines a goal tree with parent and sub goals. KAOS assumes that achieving all sub goals of a parent goal will guide to the achievement of the parent goal. The inferring process in KAOS is informal, due to the nature of deduction in KAOS, which is based on the assumption that the completion of sub goals leads decisively to the parent goal. However, there is no guarantee that the previous assumption is always valid. The lack of precise assessment for KAOS goals requires further consideration. Usually, in reality some sub goals does not lead to the parent goal due to some contextual knowledge that was not measured completely in KAOS representation. Another cause of the uncertainty of goals originates from the possibility of assigning multiple values to one goal rather than only two possible values (true or false), which is the only option taking into account in the current features of KAOS. For instance, if one of the sub goals was completed partially, there is no feature to measure the impact of this sub goal to the parent goal.

This paper takes into account the possibility of failures in achieving the ultimate goals in KAOS models. This paper will propose a new graphical representation model, which can absorb KAOS models to be represented through it. The new model enables analysts to provide measurable ultimate goals accompanied with probability to give analysts statistical results. These results will facilitate the evaluation process of the whole KAOS model. The new Model will formalize the inferring process to be

mathematically valid.

2. KAOS

KAOS is a goal oriented requirements analysis method, developed by University of Oregon and university of Louvain. KAOS stands for Knowledge Acquisition in automated Specification [1]. The main advantage of KAOS over other requirements analysis methods, which are not part of the goal analysis family, is its ability to align requirements to business goals and objectives. This alignment increases the chances that the new development will add value to business.

KAOS focus on realizing and indicating the business goals, then specifying the requirements that infer to the business goals. "Each goal (except the leaves, the bottom goals) is refined as a collection of sub goals describing how the refined goal can be reached" [2]. The structure of the various connected requirements and goals is represented hierarchically in graphical notation in an upwards direction. The top goals are strategic objectives for the business. As low as the diagram level reaches as closer to the low level requirements. The root of the diagram is the ultimate business goals. Then, the analysts must identify the penultimate goals followed by the lower goals and so on. The previous step is recurring until the analysts reach the basic goals. The lower goals are linked with the parent goals through union. The union indicates that the completion of the lower goal successfully will definitely cause the completion of their parent goal. **Figure 1** shows an example of a simplified KAOS model. KAOS main focus is on the business requirements, disregarding if this requirement is part of the

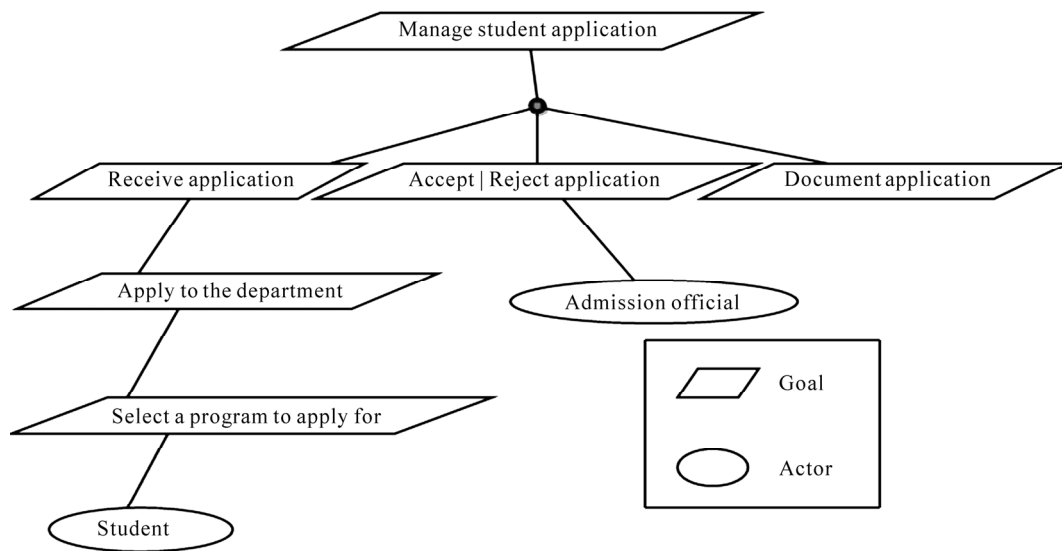


Figure 1. An example of KAOS.

computer system requirements or not. Each goal is accompanied with obstacles and the stakeholders involving in this goal. A limitation of KAOS is the lack of any inference evaluation capabilities. The achievement of sub goals does not imply the achievement of their parent goals in all cases. The next section presents a review of two candidate approaches to solve this issue.

3. Related Work

In this section, two graphical representation models will be studied as possible methods to evaluate KOAS models. The features of these approaches will be examined to check the suitability of them to enclose KAOS models.

3.1. Bayesian Networks

Bayesian Network (BNs) is a general statistical tool that can be applied to various applications. BNs are helpful to assess the weight or the influences of premises, to determine the strong inference links. [3] Bayesian Network is a graphical representation tool using symbols, numbers and arrows to enable analysts to reason logically far from doubt. It is an appropriate tool to gather and analyze evidences, in order to produce strong arguments. There are two components to construct BNs. First, nodes are representing the noticed evidential facts, propositions and variables. Second, arrow that connects between various nodes in the diagram. These arrows indicate the dependency probabilities. The value or the weight of each node is affected by the value of the nodes influencing this node and linked with it. The final conclusion of the network is affected by the probabilities of each proposition and inference. (See Figure 2)

Bayesian Network is a method to reason logically and

rationally using probabilities. The simplest way to understand the goals of BNs is to think of a circumstance you need to “model a situation in which causality plays a role but where our understanding of what is actually going on is incomplete, so we need to describe things probabilistically” [4]. There, BNs allow analysts to compute the overall probability of the final conclusion. By, computing the probability of propositions connected directly, then the higher connections, then the higher and so on. The benefits from BNs are obvious in the prediction of outcomes in doubtful cases. Also, the benefits are apparent in the detection of the causes of certain results. The influencing relations are not decisive but probabilistic; the precise probability is assigned for each node and relation. BNs are a Directed Acyclic Graph. BNs are constructed from nodes and directed links. Arrows that connect various propositions are accompanied with the probabilistic information required to define the probability distribution all over the network. To achieve that, initial probability value should be assigned to the nodes with no earlier nodes. Then, calculate the provisional probability for the

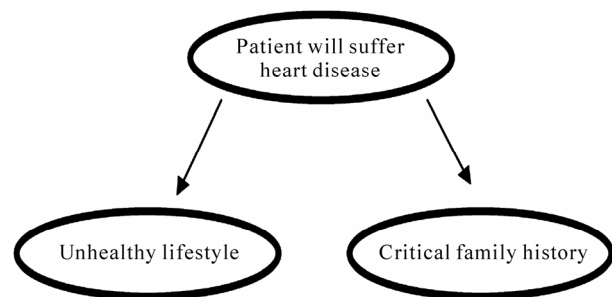


Figure 2. Simple bayesian network.

rest of the nodes and for all possible combinations of nodes and their antecedents. BNs permit the computation of the provisional probabilities of every node, bearing in mind that the value of some of the nodes has been specified before that computation took place. The diagrams' direction of Bayesian Network is downwards. In brief, the strength of the final argument is affected by the probability calculations of the supporting evidences and facts. The connections in the network represent the direct inference probabilities. The structure of the network illustrates the probabilistic dependency between various variables in a case. Each node is accompanied with a conditional probabilistic table of that node. The mixture of values for the nodes' ancestors will be provided. [5]. The main incompatibility between Bayesian Networks and KAOS modeling is the fact that the direction of BNs is downwards which contradicts with the deduction process of KAOS. However, the probabilities feature is an important aspect to be added to the evaluation process.

3.2. Wigmore's Chart

Wigmore's chart (WC) was created by John Henry Wigmore (1913) to help lawyers. [6] Wigmore's chart acts as a legal reasoning diagramming method. Wigmore's chart considered as an argument diagramming techniques to demonstrate the structure of reasoning and inferring for an argument in a legal case. The diagram as a whole identifies the logic, structure and grounds behind the reasoning of arguments in legal cases. WC is a tool which enables the creation of arguments followed by the examination of those arguments, then the recreation of those arguments. WC is valuable in cases surrounded with doubt and uncertainty. In order to create WC, analysts of legal cases must identify the connections in all steps of the arguments. Then, the analysts should breakdown the argument into propositions and facts. After that, the analysts should connect these facts and propositions together towards inferring the final conclusion of that argument. The chart method of Wigmore has a number of symbols to represent the different types of propositions and evidences. These symbols are connected with arrows to specify the direction, influence and weight of the inference. The final conclusions of the chart illustrate the logical deduction of the propositions and facts that assemble the inference. One of the main characteristics of WC is the production of key lists. The key list contains a list of all propositions, facts, evidences and assumptions, which are used to build the final conclusion of the arguments presented. In addition, inference maps show the gathering and linking process of evidences, this validates the argument construction procedure. The chart direction is upwards from facts to assumptions. The chart

contains symbols, numbers and arrows only, but, will be accompanied with a key list clarifying the statement of each proposition or evidence (see **Figure 1**). There are five main symbols required for the construction of the Chart Method of Wigmore according to Schum [7] (See **Figure 3**).

Wigmore's chart properties can be used to evaluate the deduction process of KAOS models. But, the lack of measurable results affects the reliability of the evaluation process of KAOS models.

3.3. Comparison

Bayesian networks and Wigmore's chart have valuable features, which can aid the needed evaluation of KAOS models. However, their weakness does not provide a sufficient method for evaluation. The following table compare the two models.

Bayesian Networks	Wigmore Chart
Based on statistics, using probabilities calculation for premises and relations	Based on the natural logic of rea-soning. In addition to the skills and knowledge of the chart creators
The network direction is downwards	The chart direction is upwards
Not extendable notations, BN is a Directed Acyclic Graph	Extendable notations, richer semantics and it has some understanding of what it represents
Applicable to wide range of domains, used in various applications	Designed for law domain, but can be applied to other domains only if it can be extended
Produce supportive probabilistic arguments for the final conclusion	Enable the production of argument in favour and disfavour of the desired outcome
More Complex generation	Less complex generation
Top down approach	Enable Top down and Bottom up approaches
Measurable results, not decisive	Either for or against the intended outcome
The perspective of the creators does not play any role in the outcome of the network	The Chart Method of Wigmore allows the occurrence of multiple evaluations and considerations of same evidences in legal cases, from various perspectives.
The information flow from the basic fact or variable to the final outcome or goal	The information flow from the final outcome or goal to the basic fact or variable

As shown in the earlier comparison, the need to combine selected features from these two approaches could prove to be beneficial in terms of producing valuable method to evaluate KAOS models, as explained in the next section.

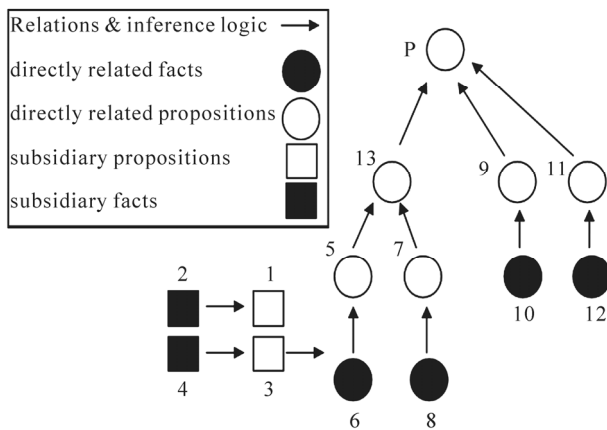


Figure 3. An example of wigmore chart.

4. Extending Wigmore's Chart

Bayesian networks and Wigmore's chart have number of practical and valuable features. The integration of some of these features will offer a model with superior capabilities and usage. The offered model will encapsulate several characteristics from both earlier models that do not contrast with each other. The extended model has to capture the properties, which are compatible with each other. This will allow the production of useful model, which facilitates the graphical representation of various tasks.

The suggested model extracts most of its properties from the chart method of Wigmore with the inclusion of one property of Bayesian networks and other external aspects. The model has to include additional aspects in order to address the gaps, which are not fulfilled completely by BNs and WC. The new model has several features. First, it enables both Top down and Bottom up Approaches, in order to facilitate the generation of models starting from the basic premises or starting from the desired conclusion. Second, the new model allows the production of measurable results to provide more accurate and reliable representation, through the introduction of probabilistic calculations. The third feature states that the new model should be extendable to be applicable to various domains. This is related to the notations of the models and the observation of contextual knowledge. Fourth, the new model eases the creation of representation supporting the desired goal, and against the desired goals. Finally, the new model will eliminate the complexity and ambiguity raised from representing the multilayered nature of cases or similar repetitive patterns. This multilayered nature could cause high complexity as stated by Hepler "If all these features are represented in one diagram, the result can be messy and hard to interpret" [8]. Another cause of complexity is the reappearance

of a similar pattern of evidences and relations between facts and propositions, within the same case or in similar cases. And it would be "wasteful to model these all individually" [8]. It allows any network to contain an instance of another network without showing the detailed structure until requested. Moreover, it authorizes the creation of general networks that contains repeated patterns of evidences and relations, which can be reused after few amendments to customize the structure to the current case. This feature can be represented in the diagram as a special symbol. This model aims to simplify the creation of probabilistic graphical models and to convert the presentation into more efficient and understandable form.

There are six main symbols required for the construction of the new model. The five foremost symbols are derived from Wigmore's chart in a generalized manner to make them applicable to various domains. The last symbol is to represent the new feature of representing a repeated pattern or inclusive diagram. First, white circles are representing the directly related propositions or goals. Second, the black circle is a symbol of the directly related facts. Third, white squares stand for the subsidiary propositions. Fourth, the Black squares, which corresponds to the subsidiary facts. Fifth, arrows are showing the flow of relations between propositions and facts. Arrows are used to clarify the inference logic or flow in the arguments. Finally, the black rectangle illustrates the presence of repetitive pattern or another inclusive diagram. The number inside the rectangle will refer to the final conclusion of the repeated pattern or inclusive diagram. The diagram direction is upwards. Every symbol will be accompanied with the probability calculation function, which will calculate the provisional probability of each node based on the probabilities of the precedent directly connected nodes. The black circles and squares will be assigned with initial probability values.

There are a series of sequential steps to construct the new model representation. First, the analysts should start by identifying the ultimate goal from the analysis. Second, the analysis team should realize and assign the final conclusion of the model usage, the penultimate propositions which support the final conclusion and the middle propositions that support the higher propositions. The previous step could be repeated recursively. Third, the analysis team have to define the provisional facts and evidences that support all of the propositions in the chart. This can happen by indicating the scenario behind the construction for or against the goal of the analysis team in this case. Fourth, the analysts have to list all key premises and inference links to simplify the construction process. Fifth, analysts should commit to the appropriate construction of the model, by using the accurate symbols

and right features. Numbers will be assigned to each symbol indicating the correct proposition or fact from the key list. Finally, after the existence of real arguments, the evaluation process should start. The analysis team should assess the arguments and evidences behind them. The analysts have to assign the initial probability values then calculate the provisional probabilities for the whole diagram. Afterwards, the joint probability for the whole diagram must be calculated, according to the probability computations rules. By this, the evaluation process could be emphasized. This will help to generate measurable outcomes to solve various issues. **Figure 4** presents the usage of the new models symbols. The next section will provide a glimpse about the significant of using our new model.

5. Evaluation KAOS

This section will show how the new extended model could be used to evaluate KAOS. The extended model will enclose KAOS goals and provide a measurable evaluation of the possibility of achieving the final outcome. **Figure 5** shows a basic KAOS model with three goals.

The constructed KAOS model could be evaluated by transferring the current goals and requirements in this KAOS model to the new models' graphical representation. This step is quite simple. The new model is similarly upwards. Each goal will be in the same position in the diagram as it was. The direct goals and requirements are represented as white and black circles. All nodes in KAOS tree will be represented as circles, the basic requirements with no earlier nodes are black and the goals are white. The accessory goals and requirements correspond to white and black squares. In the new model, analysts will be allowed to represent partially related goals and their requirements as squares, the basic related requirements are black and the related goals are white. Unions inside the KAOS model can be represented as arrows in the model. The constraints within KAOS model can be represented as a rectangle, which can symbolize the contextual knowledge or any compound model that involves repeated pattern or another model structure.

Figure 6 shows how to enclose the previous KAOS model into the new model. Then, the initial probability values have to be assigned to the nodes in the diagram. After that, analysts have to calculate and assign the provisional probability to all goals. These provisional probabilities will be produced by computation functions assigned with the inference process, which will calculate the provisional probability of each node based on the probabilities of the precedent directly connected nodes. This function should be following the acknowledged

probability rules.

6. Conclusions

This paper proposed an extension of Wigmore's chart model, intended for evaluating the inference process among goals in KAOS models. Additionally, it provided a mechanism to measure the possibility of achieving a parent goal if its sub goals are achieved.

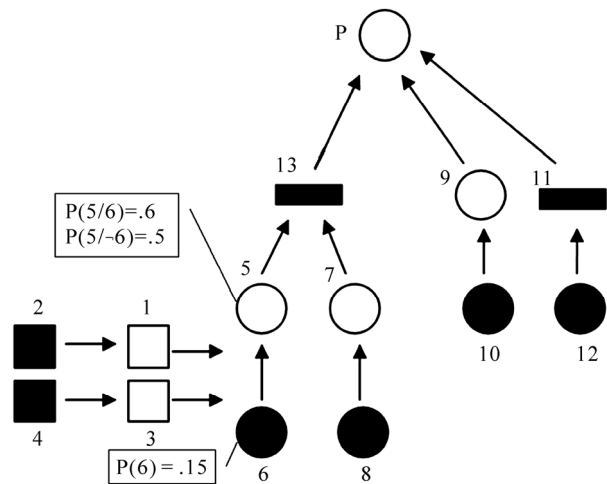


Figure 4. An example of the new model with sample probabilities.

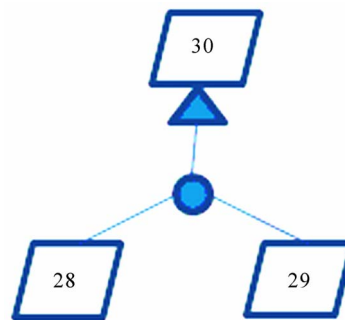


Figure 5. A basic KAOS model.

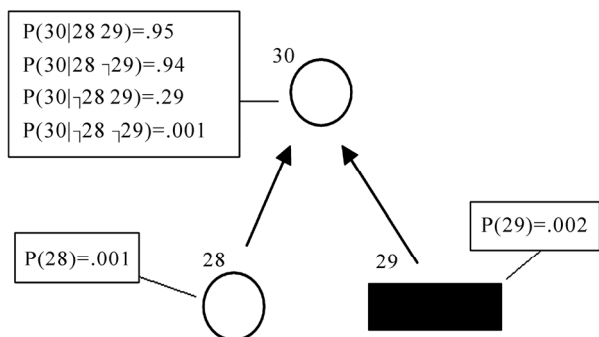


Figure 6. An example of the new model with the accompanied provisional probabilities.

Both Wigmore's chart and Bayesian networks were reviewed before an extended Wigmore's chart could be proposed. The new model provides a mathematical evaluation of KAOS, increasing the chances of constructing the right model. The new model presents a method for producing measurable results of the overall goals.

The main obstacle of the proposed evaluation approach is that it is not always feasible to know and assign the possibility of the inference from the leaves to the parent node. The proposed model suggested the use of a new separate model rather than extending KAOS model. This is to avoid adding complexity to KAOS models, in addition to the standardization grounds.

This work can be extended by building on the mathematical properties of the extended Wigmore's chart and by identifying advanced means for assigning the initial probability values.

REFERENCES

- [1] A. Dardenne, A. van Lamsweerde and S. Fickas, "Goal-Directed Requirements Acquisition," *Science of Computer Programming*, Vol. 20, No. 1-2, April 1993, pp. 3-50.
- [2] Respect IT, A KAOS Tutorial, Objectiver, 2007.
- [3] F. Taroni, C. Aitken, P. Garbolino and A. Biedermann, "Bayesian Networks and Probabilistic Inference in Forensic Science," John Wiley and Sons, Chichester, 2006.
- [4] E. Charniak, "Bayesian Networks without Tears," *AI Magazine*, Vol. 12, No. 4, 1991, pp. 50-63.
- [5] R. Neapolitan, "Learning Bayesian Networks," Prentice Hall, New Jersey, 2004.
- [6] C. Reed, D. Walton and F. Macagno, "Argument Diagramming in Logic, Law and Artificial Intelligence," *The Knowledge Engineering Review*, Vol. 22, No. 1, 2007, pp. 87-109.
- [7] D. A. Schum, "A Wigmorean Interpretation of the Evaluation of a Complicated Pattern of Evidence," Technical Report, 2005. <http://tinyurl.com/2a3elq>
- [8] A. Hepler, P. Dawid and V. Leucari, "Object Oriented Graphical Representations of Complex Patterns of Evidence," *Law, Probability and Risk*, Vol. 6, No. 1-4, 2007, pp. 275-293.