

# Particle Horizons in Cosmology

**K. Purnachandra Rao**

School of Mathematical and Statistical Sciences, Hawassa University, Hawassa, Ethiopia

Email: drkpraocecc@yahoo.co.in

Received May 9, 2013; revised June 15, 2013; accepted July 13, 2013

Copyright © 2013 K. Purnachandra Rao. This is an open access article distributed under the Creative Commons Attribution License, which permits unrestricted use, distribution, and reproduction in any medium, provided the original work is properly cited.

## ABSTRACT

The importance of investigating particle horizons in order to interpret a cosmological solution of Einstein's field equations has been described. We have presented the formula and studied the particle horizons in some of the cosmological models presented in our earlier papers. It is well known that the Friedman-Robertson-Walker (F-R-W) models, the energy density of the free gravitational field denoted by  $\varepsilon$ , equivalently denoted by MacCallum parameter  $\zeta$ , vanishes but the particle horizons exist and thus the former has no bearing on the latter. However, we have shown in our models presented herein that  $\varepsilon$  is related with particle horizons. Further, it is shown that as  $\varepsilon$  grows, the segment of the corresponding particle horizon decreases and thus the radius of the corresponding visible universe decreases.

**Keywords:** In Homogeneity; Anisotropy; Cosmology; Particle Horizon

## 1. Introduction

Cosmology deals with the large scale structure of the universe, which by definition contains everything, viz., both observable and non observable. To understand the physical nature of the universe as a whole, attempts were made during 19<sup>th</sup> century within the frame work of the Newtonian theory of gravitation. But, these efforts did not fructify since Newtonian gravitation assumed instantaneous propagation of gravitational interaction for which there had not been any experimental justification.

The progress of modern cosmology has been guided by both theoretical and observational advances. The subject really took off in 1917 with the first cosmological solution given by Albert Einstein based on his general theory of relativity or theory of gravitation. Since then a wide range of cosmological models have been constructed, studied and analyzed with varying objectives.

The Friedman-Robertson-Walker (F-R-W) cosmological models, derived based on the twin assumptions of spatial isotropy and homogeneity provides a satisfactory description of the observable universe for considerable part of its history. However, the existence of inhomogeneities in the form of galaxies and clusters as well as the anisotropy in the cosmic background radiation could not be explained with the help of these models.

Cosmological models with inhomogeneous density have been studied [1-3]. It has been shown [4-7], that the energy density of the free gravitational field  $\varepsilon$  is related to

both anisotropy and in homogeneity.

A lot of isotropic and homogeneous cosmological models have appeared in literature but a few models with the characteristics of anisotropy and in homogeneity. An attempt has been made to fill the gap by construction of a wide range of anisotropic and inhomogeneous cosmological models [8-12].

However, in order to interpret a cosmological solution of Einstein's field equations, one should investigate some special aspects like horizons [13,14]. It has been studied event horizons in cosmology [15]. In the present paper we will describe mathematically and provide graphical representations of particle horizons which exist in some of the models presented in our papers [8-12].

The Eigen value of the conformal Weyl tensor in Petrov's classification [16] is denoted by  $\varepsilon$  and is known as "the energy density of the free gravitational field" as it always coupled with the material energy density  $\rho$ .

In Section 2, following [17,18], we have defined particle horizons and list some properties of the horizons.

In Section 3, we have introduced the most general spherically symmetric space-time metric filled with anisotropic fluid. We have given the solutions of Einstein field equations, and expression for the energy density of the free gravitational field represented by  $\varepsilon$ .

In Section 4, we presented the equations of kinematical quantities, MacCallum quantity  $\zeta$ , and Raychaudhuri's equation for the spherically symmetric models.

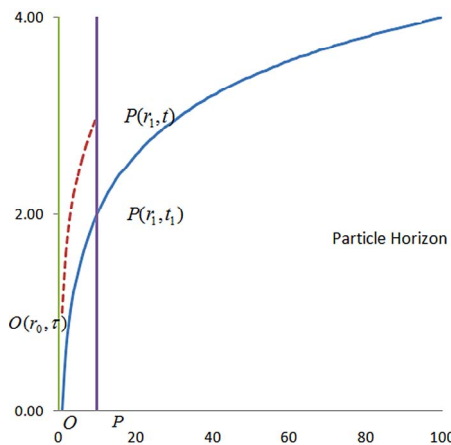
In Section 5, we have given the formula for particle

horizons of the most general spherically symmetric metric. We have investigated the existence of particle horizons in some of the models discussed in our earlier papers and derived formulae for particle horizons in these models. The diagrammatic representations of the particle horizons studied here have been provided in **Figures 1-4**. In Section 6, we presented direct comparison between the Event and Particle horizons and graphical representation is provided in **Figure 5**. In all the figures the radial coordinate  $r$  is taken along the horizontal axis while the time coordinate  $t$  is taken along the vertical axis. The paper ends with concluding remarks in Section 7.

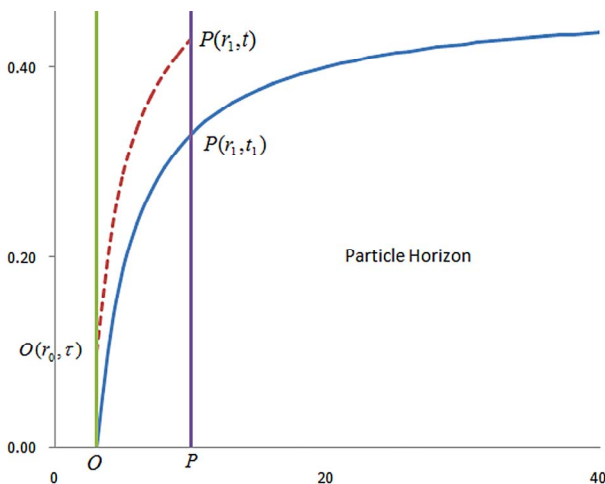
## 2. Particle Horizons

### 1) Event horizon

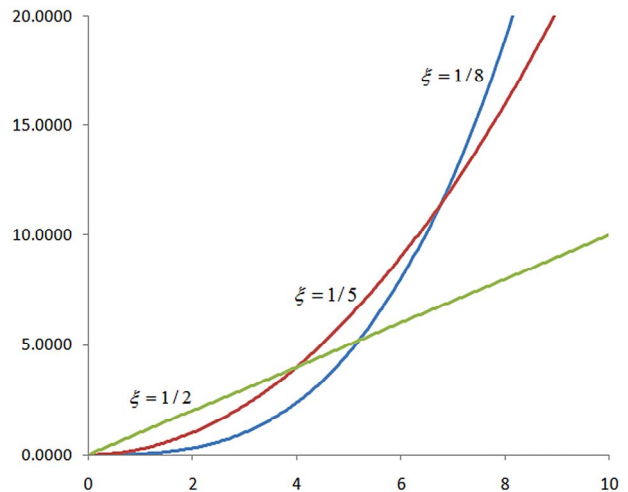
Consider an observer and a photon on its way to the observer along a null geodesic. It can happen that the



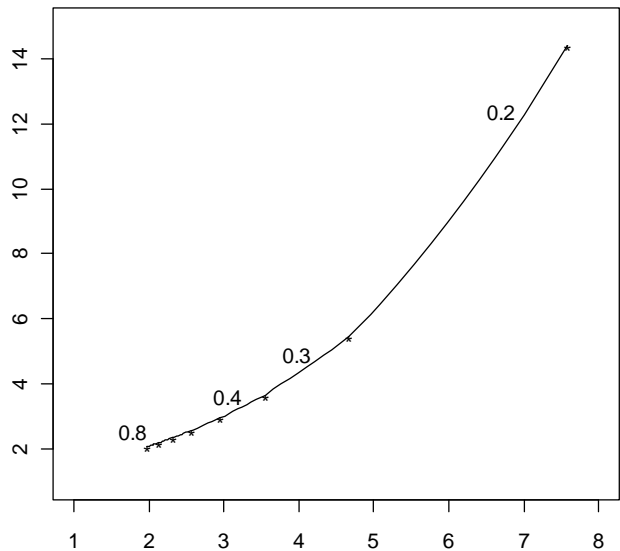
**Figure 1.** Diagrammatic representation of the particle horizon described by (31) of the space-time metric described by (29).



**Figure 2.** Diagrammatic representation of the particle horizon described by (33) of the space-time metric described by (32).



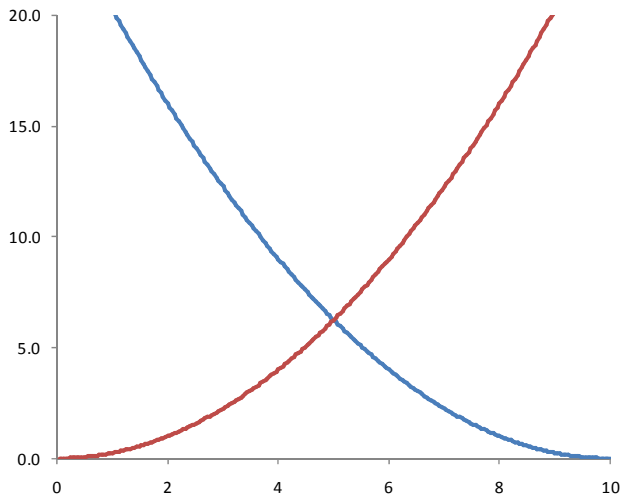
**Figure 3.** Diagram showing the particle horizons described by (38) of the space-time metric described by (36) corresponding to  $\xi = 1/8, 1/5$  and  $1/2$ .



**Figure 4.** Diagram showing that the particle horizon of the space-time metric described by (36) is made up of curved segments corresponding to various  $\xi$  values.

space-time is expanding at such a rate that the photon never gets to the observer. As Eddington has put it, “light is then like a runner on an expanding track, with the winning post (observer) reseeding from him forever” [18].

In such cases there will be two classes of photons on every null geodesic through the observer: those which reach the observer at a finite time and those who do not. They are separated by the aggregate of photons (light front) that reach exactly at  $t = \infty$ . The light front is called observer’s event horizon. The existence and motion of an event horizon depend on the form of expansion parameter. The event horizons in cosmology have been studied by [15].



**Figure 5. Diagram showing the direct comparison between Event and Particle horizons of the space-time metric (36) as described in the Section 6. Here we have selected  $\xi = 1/5$ .**

**2) Particle horizon**

Suppose that very first photons (light front) emitted by the observer at a “big-bang” event are still around. As this light front sweeps outwards, towards more and more galaxies, the observer at the big-bang and these galaxies see each other for the very first time (cosmic instant). Hence, at any cosmic instant this light front, called the observer’s particle horizon, divides all galaxies into two classes relative to the observer: those already in observer’s view and all others.

**3) Some properties of horizons**

a) Every galaxy, within A’s event horizon, except A, eventually possess out of it. For if B is such a galaxy, then A’s horizon photon in the direction of AB is within B’s event horizon, and will therefore reach B at a finite cosmic time. That is, when B passes out of A’s event horizon.

b) Every galaxy B within A’s event horizon remains visible forever at A. For, the event horizon itself brings a last view of B. As B approaches A’s event horizon in models with infinite expansion, its history, as seen at A, gets infinitely dilated, and its light infinitely red-shifted. In collapsing models B’s light gets infinitely blue-shifted as B approaches the event horizon.

c) As galaxies are overtaken by A’s particle horizon, they come into view at A with infinite red-shift in big-bang models, and infinite blue-shift in models with unlimited past expansion.

d) If a model possesses no event horizon, every event at every galaxy is seen on every galaxy. For, an invisible event implies the existence of event horizon.

e) If a model possesses no particle horizon, every observer - if necessary by traveling from his original galaxy - can be present at any event at any galaxy. For, in prin-

ciple, his only travel restriction is his forward light cone at creation; but that would be a particle horizon if all galaxies were not always within it.

f) If an event horizon exists, two arbitrary events are in general not both knowable to one observer, even if he travels. For, consider two diametrically opposite events outside an event horizon. Their forward light cones can’t intersect. But to now either event means being in its forward light cone.

g) The event and particle horizons, if exist, must cross each other within the life time of the model. For, the particle horizon was and the event horizon will be, at the fundamental particles associated with them.

h) When a model, in which both event and particle horizons exist, is run backward in time (*i.e.* time reversed), the event horizon becomes the particle horizon and vice-versa.

**3. Spherically Symmetric Space-Time Metric**

The most general spherically space-time line element can be considered as

$$ds^2 = -e^{-\lambda} dr^2 - R^2 (d\theta^2 + \sin^2 \theta d\phi^2) + e^\nu dt^2 \tag{1}$$

where  $\lambda$ ,  $R$  and  $\nu$  are functions of  $r$  and  $t$  only. We assume that the material source of the gravitational field, filled in the metric, is an anisotropic fluid with the energy momentum tensor

$$T_a^b = (\rho + p_\perp) u_a u^b - p_\perp g_a^b + (p_r - p_\perp) v_a v^b \tag{2}$$

where

$$u^a = (0, 0, 0, \exp(-\nu/2)), \quad u_a u^a = 1 \tag{3}$$

$$v^a = (\exp(-\lambda/2), 0, 0, 0), \quad v_a v^a = -1 \tag{4}$$

and  $p_r$  and  $p_\perp$  represent respectively the radial and transverse components of fluid pressure where as  $\rho$  denotes the proper density of the fluid. The Einstein field equations with the cosmological constant  $\wedge$  included is given by

$$-8\pi T_a^b = R_a^b - (1/2) R g_a^b + \wedge g_a^b \tag{5}$$

After using (1) to (3) we get the following:

$$8\pi T_1^1 + \wedge = -8\pi p_r + \wedge = -[e^{-\lambda}/R] [(R'^2/R) + R'\nu'] \tag{6}$$

$$+ [e^{-\nu}/R] [2\ddot{R} + (\dot{R}^2/R) - \dot{R}\dot{\nu}] + (1/R^2)$$

$$8\pi T_2^2 + \wedge = 8\pi T_3^3 + \wedge = -8\pi p_\perp + \wedge$$

$$= 8\pi \varepsilon - [e^{-\lambda}/R] [2R'' - (R'^2/R) - R'\lambda' + R'\nu']$$

$$+ [e^{-\nu}/R] [2\ddot{R} + (\dot{R}^2/R) + \dot{R}\dot{\lambda} - \dot{R}\dot{\nu}] - (1/R^2) \tag{7}$$

$$8\pi T_4 + \wedge = -8\pi\rho + \wedge = -[e^{-\lambda}/R][2R'' + (R'^2/R) - R'\lambda'] + [e^{-\nu}/R][(\dot{R}^2/R) + \dot{R}\lambda] - (1/R^2) \tag{8}$$

$$8\pi\varepsilon = e^{-\lambda} [(R''/R) - (R'/R)^2 - (\nu''/2) - (\nu'^2/4) - (R'\lambda'/2R) + (R'\nu'/2R) + (\lambda'\nu'/4)] + e^{-\nu} [(\ddot{\lambda}/2) + (\dot{\lambda}^2/4) - (\ddot{R}/R) + (\dot{R}/R)^2 - (\dot{R}\dot{\lambda}/2R) + (\dot{R}\dot{\nu}/2R) - (\dot{\lambda}\dot{\nu}/4)] + (1/R^2) \tag{9}$$

$\varepsilon$  is the Eigen value of the conformal Weyl tensor in Petrov’s classification [16]. Here and what follows a prime and a over head dot denote respectively a differentiation with respect to  $r$  and  $t$ . As we shall see later since the Eigen value  $\varepsilon$  is always coupled with the material energy density  $\rho$ , the former was interpreted [4-6], as the “energy density of the free gravitational field” and its presence is related with both anisotropy and inhomogeneity. The necessary and sufficient condition for conformal flatness of the space-time (1) is  $\varepsilon = 0$ .

Using the directional derivatives  $D_r = \exp(-\lambda/2)(\partial/\partial r)$  and  $D_t = \exp(-\nu/2)(\partial/\partial t)$  along the radial and transverse directions respectively,  $\Gamma$  and  $U$  are defined as

$$\Gamma = D_r R = R'/\exp(-\lambda/2) \tag{10}$$

$$U = u^a (\partial R/\partial x^a) = D_t R = \dot{R}/\exp(\nu/2) \tag{11}$$

We now directly write down the equations which govern the evolution of the system as below [19]:

$$D_t (\lambda/2) = \partial U/\partial R \tag{12}$$

$$D_t \Gamma = U D_r (\nu/2) \tag{13}$$

$$D_t (nR^2) = -nR^2 (\partial U/\partial R) \tag{14}$$

$$D_t U = (1/2)\Gamma^2 (\partial U/\partial R) - (4\pi/3) \cdot [\rho + \varepsilon + p_\perp + 2p_r - (\wedge/4\pi)] R \tag{15}$$

$$D_t [(4\pi/3)[\rho + \varepsilon + p_\perp - p_r + (\wedge/8\pi)] R^3] = -[p_r - (\wedge/8\pi)] D_t [(4\pi/3)/R^3] \tag{16}$$

$$D_r [(4\pi/3)[\rho + \varepsilon + p_\perp - p_r + (\wedge/8\pi)] R^3] = [\rho + (\wedge/8\pi)] D_r [(4\pi/3)/R^3] \tag{17}$$

$$(\rho + p_\perp) D_r (\nu/2) = -D_r [p_r + (\wedge/8\pi)] + (p_\perp - p_r) D_r (\ln [R^2 \exp(\nu/2)]) \tag{18}$$

where  $n$  denotes the baryon number density and we have written  $\partial/\partial R = (R')^{-1} (\partial/\partial r)$ .

We may mention here that the energy density of the free gravitational field which is coupled always to the material energy density as well as the cosmological constant plays a significant role in describing truly relativistic situations. We have taken, for simplicity, the coupling constant as unity. However, in order to raise the contribution of  $\varepsilon$  substantially relative to  $\rho$ , we could have chosen the coupling constant to desired levels.

### 4. Kinematics of Spherically Symmetric Models

Spherically symmetric solutions can be classified according to their kinematical properties. The assumption of spherical symmetry implies that rotation  $W_{ab} = 0$  and hence the fluid velocity field must be hyper surface orthogonal. From (1) and (3) we get the expressions for the remaining kinematical quantities, viz. acceleration  $\dot{u}_a$ , components of the shear tensor  $\sigma_a^b$ , shear invariant  $\sigma$  defined by  $\sigma^2 = (3/2)\sigma_a^b \sigma_b^a$  and expansion  $\theta$  of the time-like congruence  $u^a$ , as below:

$$\dot{u}_a = [\exp(-\lambda/2)](\nu'/2) \tag{19}$$

$$(1/2)\sigma_1^1 = -\sigma_2^2 = -\sigma_3^3 = (1/3)[\exp(-\nu/2)][(\dot{\lambda}/2) - (\dot{R}/R)] \tag{20}$$

$$\sigma = [\exp(-\nu/2)][(\dot{\lambda}/2) - (\dot{R}/R)] \tag{21}$$

$$\theta = \sigma + 3(\dot{R}/R)[\exp(-\nu/2)] \tag{22}$$

In view of these expression, the anisotropy in the 4-dimensional space-time, denoted by  $\xi$ , and defined by [13] as

$$\xi = |3\sigma_a^b \sigma_b^a / 2\theta^2|^{1/2} \tag{23}$$

takes the form

$$\xi = \left| \frac{[(\dot{\lambda}/2) - (\dot{R}/R)]}{[(\dot{\lambda}/2) + (2\dot{R}/R)]} \right| = \left| \frac{\sigma}{\theta} \right| \tag{24}$$

and similarly the Raychaudhuri equation [20]

$$\theta_{;a} u^a = -(1/3)\theta^2 + \dot{u}_{;a}^a - \sigma_{ab} \sigma^{ab} + w_{ab} w^{ab} + R_{ab} u^a u^b \tag{25}$$

using (3) can be rewritten as

$$\dot{\theta} = -(1/3)\theta^2 - (2/3)\sigma^2 - 4\pi(\rho + p_r + 2p_\perp) + \wedge \tag{26}$$

The quantity  $\xi$  that described the anisotropy of the 4-dimensional space-time as defined by [13] can also be written as [19]

$$(1 \pm \xi)(\dot{\lambda}/2) = (1 \mp 2\xi)(\dot{R}/R) \tag{27}$$

where the upper and lower signs respectively correspond to expanding and contracting models. It has been suggested that a physically meaningful cosmological model should evolve in such a way that  $\xi$  starts from 0 at “big bang” and ends up with 1 in the “black hole”, that is “big crunch”.

### 5. Formula for Horizons

With the coordinates  $\theta$  and  $\phi$  suppressed in the space-time metric described by (1), the equation of motion,  $r-t$  relation, of a photon emitted at  $(r, t)$  towards the origin galaxy at  $(r_1, t_1)$  is given by

$$\int_r^{r_1} e^{\lambda/2} dr = \int_{t_1}^t e^{\nu/2} dt. \tag{28}$$

In the space-time model, described by [21]

$$ds^2 = -dr^2 - r^2 f(t)(d\theta^2 + \sin^2 \theta d\phi^2) + (r^2/4) dt^2 \tag{29}$$

The equation of motion (28) takes the form

$$\int_r^{r_1} (1/r) dr = \int_{t_1}^t (1/2) dt \tag{30}$$

In (29), a particle horizon exists, since the condition for which

$$\int_0^t (1/2) dt < \infty$$

is satisfied. Thus, the equation of the horizon is given by

$$\int_{r_0}^{r_1} (1/r) dr = \int_0^{t_1} (1/2) dt \Rightarrow r_1 = r_0 \exp(t_1/2) \tag{31}$$

and thus the particle  $P(r_1, t_1)$  comes out of particle horizon at  $t_1 = 2 \log(r_1/r_0)$ . If the observer  $O(r_0, \tau)$  and the particle  $P(r_1, t)$  where  $t > t_1$ , see each other then  $\tau = t - t_1$ .

We have given the diagrammatic representation of this particle horizon in **Figure 1**.

We now consider the space-time model described by [21]

$$ds^2 = -(k/r^2) dr^2 - r^2 t(L-t)(d\theta^2 + \sin^2 \theta d\phi^2) + r^2 dt^2 \tag{32}$$

where  $k > 0, L > 0$  and  $0 \leq t < L$ . The equation of particle horizon of (32) is given by

$$\sqrt{k} [(1/r_0) - (1/r_1)] = t_1 \tag{33}$$

where  $t = t_1$  is the time when the particle comes out of the particle horizon. If the observer  $O(r_0, \tau)$  and the particle  $P(r_1, t)$  where  $t > t_1$ , see each other then  $\tau = t - t_1$ . We have given the graphical representation of this particle horizon in **Figure 2**.

We now consider the space-time model described by [21]

$$ds^2 = -[a - (\wedge/3)r^2]^{-1} dr^2 - r^2 G^2(t)(d\theta^2 + \sin^2 \theta d\phi^2) + r^2 dt^2 \tag{34}$$

in which a particle horizon exists and its equation is given by

$$(r_1/r_0) \left\{ \left[ 1 + \sqrt{1+r_0^2} \right] / \left[ 1 + \sqrt{1+r_1^2} \right] \right\} = e^{\wedge t} \tag{35}$$

where  $r_0 \neq 0$  is a constant and the particle comes out of the particle horizon at  $t_1$ . If the observer  $O(r_0, \tau)$  and the particle  $P(r_1, t)$  where  $t > t_1$ , see each other then  $\tau = t - t_1$ .

We now consider a more general metric described by [21]

$$ds^2 = -t^{2n} dr^2 - t^2 (d\theta^2 + \sin^2 \theta d\phi^2) + dt^2 \tag{36}$$

With the constant  $n$  satisfying  $-(1/2) \leq n < 1$ , in which a particle horizon exists and its equation is given by

$$r = [t^{1-n}/(1-n)] \tag{37}$$

If the observer  $O(o, t)$  and the particle  $P(r_1, t)$  where  $t > t_1$ , see each other at  $\tau$ , then  $\tau^{1-n} = t^{1-n} - t_1^{1-n}$ . It is clear that in the space-time metric (36),  $n$  is related to  $\xi$  by  $n = [(1-2\xi)/(1+\xi)]$ . Thus, the equation of particle horizon (37), in terms of  $\xi$ , takes the form

$$r = [(1+\xi)/3\xi] t^{3\xi/(1+\xi)} \tag{38}$$

It appears, from (38), that the evaluation period of the particle horizon is divided into three parts respectively: initial, intermediate and final epochs. As  $\xi$  increases from the order of zero to the order of 1, the following properties of particle horizons may be observed:

1) In the initial epochs, the particle horizons with increasing values of  $\xi$  start at nearer distances and run away from the observer with faster rates.

2) In the intermediate epochs, the farther horizons are over taken by their preceding ones' in a systematic manner. That is, in the process the nearest horizon over takes all others and becomes the farthest to the observer, while the farthest horizon allows all others to take over it and becomes the nearest and so on.

3) In the final epochs, with the reversed length scales, i.e. larger the distance of horizon from the observer higher the corresponding value of  $\xi$ , the particle horizons expanded with slower rates.

We have given diagrammatic representation of the particle horizon described by (38) for  $\xi = (1/8), (1/5)$  and  $(1/2)$  in **Figure 3**, in which the above drawn conclusions are clearly illustrated.

4) Small segments of the horizons of  $\xi$  s' are arranged to form a continuous curve and this curve will remain as the true particle horizon of the observer. These segments with  $\xi$  growing from its minimum to maximum are arranged in a sequence from the farthest to the nearest.

We have given a diagram in **Figure 4** which demonstrates the property 5).

## 6. Comparison between the Event and Particle Horizons

In the space-time metric described by (36), both Event and Particle horizons exist. The Event horizon [15] is

described by the equation  $r = r_0 - \left[ \frac{t^{1-n}}{1-n} \right]$ . The Particle

horizon is described by (37) as  $r = \left[ \frac{t^{1-n}}{1-n} \right]$  and its

graphical representation is shown in **Figure 3**. Here

$n = \frac{1-2\xi}{1+\xi}$  and  $0 \leq \xi \leq 1$ . We now make a direct com-

parison between the Event and Particle horizon.

Event horizon is a spherical light front converging towards the observer while Particle horizon is that diverging away from the observer, as time progresses. However, Event and Particle horizons are inversely propagating (oppositely travelling) light fronts (spherical) to and from an observer. Graphical comparison, illustrating this fact, is shown in **Figure 5**.

## 7. Conclusion

We have derived the equations of particle horizons for some cosmological solutions. Also, we have demonstrated them graphically. It is well known that in F-R-W models  $\varepsilon$  vanishes but horizons exist and thus the former has no bearing on the latter. However, we have shown in **Figure 4** that  $\varepsilon$ , equivalently  $\xi$ , is related with horizons. As  $\varepsilon$  grows, the corresponding particle horizon increases and thus the radius of the visible universe increases.

## 8. Acknowledgements

My profound thanks are due to the referee for his valuable and constructive comments and to my colleague Dr. Ayele Taye Goshu for his stimulating discussions.

## REFERENCES

- [1] R. C. Tolman, *Proceedings of the National Academy of Sciences of USA*, Vol. 20, 1934, p. 69.
- [2] G. C. Omer, *The Astrophysical Journal*, Vol. 109, 1949, p. 164.
- [3] H. Bondi, *Monthly Notices of the Royal Astronomical Society*, Vol. 107, 1947, p. 410.
- [4] J. Krishna Rao, *Current Science*, Vol. 35, 1966, p. 389.
- [5] J. Krishna Rao, *General Relativity and Gravitation*, Vol. 2, 1971, pp. 385-386.  
<http://dx.doi.org/10.1007/BF00758157>
- [6] J. Krishna Rao, *Journal of Physics (London)*, Vol. A5, 1972, p. 479.
- [7] J. Krishna Rao, *General Relativity and Gravitation*, Vol. 2, 1973, p. 351.  
[doi:10.1007/BF00771004](http://dx.doi.org/10.1007/BF00771004)
- [8] J. Krishna Rao, *Pramana: Journal of Physics*, Vol. 34, 1990, p. 423.
- [9] J. Krishna Rao, *Journal of the Institute of Mathematics*, Vol. 51, 1995, p. 57.
- [10] K. Purnachandra Rao, Unpublished Ph.D. Thesis, Bhavnagar University, Bhavnagar, 1997.
- [11] K. Purnachandra Rao, *et al.*, *Mathematics Today*, Vol. 16, 1998, p. 25.
- [12] K. Purnachandra Rao, *Mathematics Today*, Vol. 17, 1999, p. 29.
- [13] K. Purnachandra Rao, *Mathematics Today*, Vol. 21, 2005, p. 31.
- [14] K. Purnachandra Rao, *Mathematics Today*, Vol. 24, 2008, p. 17.
- [15] K. Purnachandra Rao, *Mathematics Today*, Vol. 25, 2009, p. 34.
- [16] K. Purnachandra Rao, *Mathematics Today*, Vol. 27, 2011, p. 54.
- [17] M. A. H. MacCallum, In: V. D. Sabbata, Ed., *The Origin and Evolution of Galaxies*, World Scientific Pub. Co., 1982.
- [18] M. A. H. MacCallum, In: B. R. Iyer, A. Kembhavi, J. V. Narliker and C. V. Vishveshwara, Eds., *Highlights in Gravitation and Cosmology*, University Press, Cambridge, 1988.
- [19] A. K. Raychaudhuri, *Physical Review*, Vol. 98, 1955, pp. 1123-1126. [doi:10.1103/PhysRev.98.1123](http://dx.doi.org/10.1103/PhysRev.98.1123)
- [20] W. Rindler, *Monthly Notices of the Royal Astronomical Society*, Vol. 116, 1956, p. 662.
- [21] W. Rindler, "Essential Relativity: Special, General and Cosmological," Springer-Verlag, 1977.