

# Transformation of the Angular Power Spectrum of the Cosmic Microwave Background (CMB) Radiation into Reciprocal Spaces and Consequences of This Approach

Ladislav Červinka

*Institute of Physics, Academy of Sciences of the Czech Republic, Prague, Czech Republic*

*E-mail: L.Cervinka@icarlis.cz*

*Received July 30, 2011; revised September 8, 2011; accepted September 20, 2011*

## Abstract

A formalism of solid state physics has been applied to provide an additional tool for the research of cosmological problems. It is demonstrated how this new approach could be useful in the analysis of the Cosmic Microwave Background (CMB) data. After a transformation of the anisotropy spectrum of relict radiation into a special two-fold reciprocal space it was possible to propose a simple and general description of the interaction of relict photons with the matter by a “relict radiation factor”. This factor enabled us to process the transformed CMB anisotropy spectrum by a Fourier transform and thus arrive to a radial electron density distribution function (RDF) in a reciprocal space. As a consequence it was possible to estimate distances between Objects of the order of  $\sim 10^2$  [m] and the density of the ordinary matter  $\sim 10^{-22}$  [kg·m<sup>-3</sup>]. Another analysis based on a direct calculation of the CMB radiation spectrum after its transformation into a simple reciprocal space and combined with appropriate structure modelling confirmed the cluster structure. The internal structure of Objects may be formed by Clusters distant  $\sim 10$  [cm], whereas the internal structure of a Cluster consisted of particles distant  $\sim 0.3$  [nm]. The work points in favour of clustering processes and to a cluster-like structure of the matter and thus contributes to the understanding of the structure of density fluctuations. As a consequence it may shed more light on the structure of the universe in the moment when the universe became transparent for photons. On the basis of our quantitative considerations it was possible to derive the number of particles (protons, helium nuclei, electrons and other particles) in Objects and Clusters and the number of Clusters in an Object.

**Keywords:** CMB Radiation, Analysis of CMB Spectrum, Radial Distribution Function of Objects, Early Universe Cluster Structure, Density of Ordinary Matter

## 1. Introduction

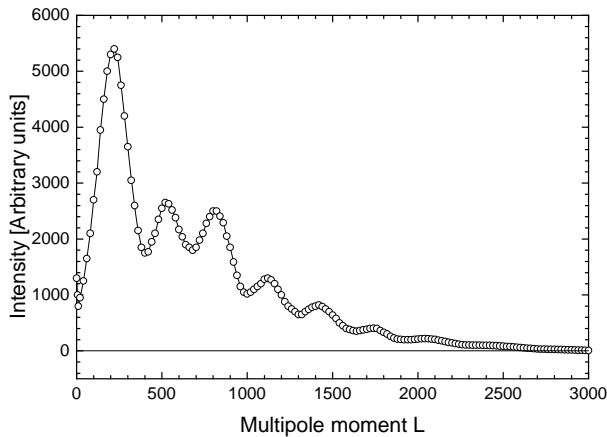
The angular power spectrum (anisotropy spectrum) of the Cosmic Microwave Background (CMB) radiation ([1,2]) shows incredible similarity with X-ray or neutron scattering measured on non-crystalline materials ([3], [4]), see **Figures 1 and 2**.

Astronomers ascribe to various peaks of the anisotropy spectrum of the CMB radiation different processes [5]. It is the Sachs-Wolf effect, Doppler effect, Silk damping, Rees-Sciama effect, Sunyaev-Zeldovich effect, etc. In this connection it should be stated that all theoretical predictions of the standard cosmological model are in very good agreement with the course of the anisotropy

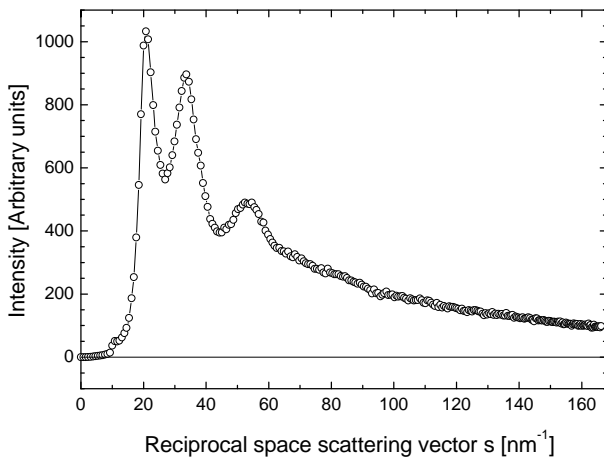
spectrum of CMB radiation.

However, the formal similarity in the form of both figures initiates the tempting idea if an analysis of the anisotropy spectrum of relict radiation using an analogous approach as is common in solid state physics, *i.e.* in the structural analysis of disordered materials, would bring more information on the structure of the early universe.

The inspiration for this approach we found further in the nowadays situation: Although the individual disciplines in physics are highly specialized, nevertheless their methods and results are shared in areas that at the first sight may seem to be far apart. An example of this is the already established use of elementary particle physics



**Figure 1. Anisotropy spectrum of the CMB radiation [1].** The figure describes the dependence of the magnitude of the intensity of microwave background on the multipole moment  $L = 180^\circ/\alpha$ , where  $\alpha$  is the angle between two points in which the temperature fluctuations are compared to an overall medium temperature. The description of the Y-axis is for simplicity described in [Arbitrary units]. The original description was given as  $L(L + 1)C_L/2\pi$  in  $[\mu\text{K}^2]$  units, where  $L$  is the multipole moment,  $C_L$  is a function reflecting the width of the window measuring the temperature fluctuations.



**Figure 2. X-ray scattering diagram taken on a sample of a chalcogenide glass of a composition  $(\text{Ge}_{0.19}\text{Ag}_{0.25}\text{Se}_{0.50})$  using the  $\text{MoK}_\alpha$  radiation, see [4] for detail. The reciprocal space scattering vector  $s$  is defined in Equation (A5).**

in cosmology.

Similarly, we hope that it may be time now to apply the formalism of solid state physics to some special cosmological problems and in this way to provide an additional tool for their research.

First of all our new approach may be useful in the analysis of the CMB data. We will show how after the transformation of the anisotropy spectrum of relict radiation into a special two-fold reciprocal space we will be able to process the transformed CMB anisotropy spec-

trum by a Fourier transform and thus calculate a radial distribution function (RDF) of the matter in a reciprocal space. Because the CMB radiation reflects the fluctuations in the density of the matter, we hope that in this way our study will contribute to the understanding of the structure of these density fluctuations. Simultaneously, as a consequence, it may shed more light on the structure of the universe in the moment when the universe became transparent for photons (see Subsection 5.1.).

Moreover, in contrast to solid state physics where the atomic (coherent) and Compton (incoherent) scattering factors are describing theoretically the interaction of X-rays (or neutrons) with all kinds of atoms, this new formalism will present a general description of the interaction of relict radiation with the matter by a single “relict radiation factor”, which should unify all processes realized during the interaction of relict radiation with various kinds of particles forming the primordial matter, see Subsections 2.3.3. and 5.2.

## 2. Construction of the Classic and Relict Reciprocal Space

In solid state physics the principal mathematical method during the structure analysis of the matter is the Fourier transform of the intensity of X-rays (or neutrons) scattered by atoms building the material. The experimental data are collected in the reciprocal space and their Fourier transform brings the required information on the distribution of atoms in the real space. In this contribution we will try to apply this approach to the CMB spectrum (see **Figure 1**) and simultaneously point out the complications we have to overcome in this direction.

The necessary basic mathematical apparatus is summarized in the Appendix A, the most important basic equations for the analysis of “scattered” radiation and leading to the radial density distribution function (RDF) are Equations (A1) and (A2). The essential difference in the use of terms “scattering” and “interaction” of photons will be elucidated in the next Subsection 2.1.

### 2.1. The Relict Radiation Factor

During a conventional structure analysis with X-rays or neutrons, the X-ray or neutron atomic scattering factors are a precise picture of the interaction of radiation with the matter and are known precisely [6]. They enter into the calculation of the RDF in correspondence with the composition of the studied material; see Equations (A6), (A7) and (A10). Generally, for coherent scattering, the atomic scattering factor  $f$  is the ratio of the amplitude of X-rays scattered by a given atom  $E_a$  and that scattered according to the classical theory by one single electron

$E_e$ , *i.e.*  $f = E_a/E_e$  ( $f \leq Z$ ), where  $Z$  is the number of electrons in the atom.

Moreover, there are scattering factors not only for the coherent but also for the incoherent (Compton) type of scattering, see e.g. later on **Figure 6**.

In our study, however, the basic obstacle is that with CMB photons we have not a classic scattering process of photons on atoms; *i.e.* a process described in equations of the Appendix A. There are not atoms, there are particles only (e.g. baryons, electrons, etc.), which participate in the formation of the structure of density fluctuations. Therefore we will speak throughout this article about an “interaction” instead of “scattering” in all cases when instead of the classic “atomic scattering factor” the new “relict radiation factor” will be used.

It is true that a part of the interaction of photons with electrons before the recombination may be realised as Thomson scattering (elastic scattering of electromagnetic radiation by a free charged particle, as described by classical electromagnetism)<sup>1</sup>, but the complex picture of physical processes describing the interaction of relict photons with the non uniform matter composed of various particles (electrons, ions, etc.) is not known *to such an extent in order to enable a theoretical calculation of this interaction* (on the basis of scattering factors).

It is therefore evident that it will not be possible to use the conventional atomic scattering factors and that a *new special factor* reflecting the complexity of interaction processes of photons with the primordial matter has to be constructed. We only point out that the description of these interactions is possible only *in a special two-fold reciprocal space* into which the CMB spectrum is transformed. This new factor will be called the *relict radiation factor* and substitutes all complicated processes which participate in the formation of the angular power spectrum of CMB radiation.

The construction of the relict radiation factor is presented in Subsection 2.3.3.

## 2.2. The Wavelength of Radiation

The wavelength of radiation is a quantity of highest importance, too. It follows from Equation (A5), that the greater the wavelength the smaller is the maximal possible value  $s^{\max}$  of the reciprocal space vector. At the same time the upper limit of the integral in Equation (A2) strongly influences the quality of the Fourier transform.

Although there is a broad distribution of wavelengths of photons (see later on the discussion in Subsection 5.3.) the calculation will be undertaken for the wavelength

<sup>1</sup>It is just the low-energy limit of Compton scattering: the particle kinetic energy and photon frequency are the same before and after the scattering, however this limit is valid as long as the photon energy is much less than the mass energy of the particle.

corresponding to the maximum of the wavelength distribution which corresponds to the temperature 2.725 K of the Universe today (see later on **Figure 18**), *i.e.* for the wavelength  $\lambda = 1.9$  [mm].

That this wavelength is rational is based on three arguments. First of all photons with this wavelength bring us the information on their last several interactions with particles *today*, in the second place the CMB radiation spectrum is the same for all wavelengths and in the third place the wavelength corresponding to the maximum of the wavelength distribution secures the highest probability of the interaction process of photons with the matter.

## 2.3. Preparatory Calculations

### 2.3.1. The Classic Reciprocal Space

During a classic scattering experiment we measure the intensity of the scattered radiation (e.g. X-rays) as a function of the scattering angle  $\theta_{\text{Classic}}$ . This scattering angle describes in real space the angle between the incident and scattered radiation. Its relation with the scattering vector in reciprocal space was described in Equation (A5).

On the other hand the angle  $\alpha$  in the anisotropy spectrum of relict radiation (see already **Figure 1**) is not a scattering angle. It is an angle characterizing the distance between an arbitrary point to another—in those different points the temperature fluctuation is measured and compared with the overall medium one.

In order to overcome the incomparableness between the angles  $\alpha$  and  $\theta$ , we will construct *an angle dependent reciprocal space to the angle  $\alpha$* . The basic quantity determining this reciprocal space will be the scattering angle  $\theta_{\text{Classic}}$ .

We will suppose that the maximum possible value of the classic scattering angle  $\theta_{\text{Classic}}^{\max} = 90^\circ$ , corresponds to the maximum value of the multipole moment  $L^{\max} = 3000$ .

As a consequence we receive a transformation coefficient  $Q$

$$\theta_{\text{Classic}}^{\max} = QL^{\max}, \quad (1)$$

(its value in this case is  $Q = 0.03$ ).

We are then able to calculate the whole set of  $\theta_{\text{Classic}}$  angles

$$\theta_{\text{Classic}} = LQ = L\left(\theta_{\text{Classic}}^{\max}/L^{\max}\right) \quad (2)$$

and because  $L = 180/\alpha$ , then

$$\theta_{\text{Classic}} = (1/\alpha)\left(180\left(\theta_{\text{Classic}}^{\max}/L^{\max}\right)\right), \quad (3)$$

*i.e.*

$$\theta_{\text{Classic}} = (1/\alpha)P_{\text{Classic}}, \quad (4)$$

where

$$P_{\text{Classic}} = 180Q [\text{deg}^2] \quad (5)$$

is a coefficient enabling the transition between the space  $\alpha$  and the space  $\theta_{\text{Classic}}$  and where *the angular space  $\theta_{\text{Classic}}$  is reciprocal to the angular space  $\alpha$* .

According Equation (A5) we are now able to construct the whole set of scattering vectors  $s_{\text{Classic}}$

$$s_{\text{Classic}} = 4\pi(\sin\theta_{\text{Classic}})/\lambda, \quad (6)$$

where  $\lambda$  is the wavelength of the relict radiation. It should be noted that the *quantities  $s_{\text{Classic}}$  and  $\alpha$  are in an indirect relation*. The space of the vector  $s_{\text{Classic}}$  will be further on called a “*Classic reciprocal space*”.

It should be pointed out that in this construction (see Equation (6)) the scattering vector  $s_{\text{Classic}}$  is defined in the reciprocal space ( $1/\lambda$ ) and that *this space is now dipped into the reciprocal space ( $1/\alpha$ )*, see Equations (2), (4) and (6). For this “dipping” we will use further on the expression that *the space  $s_{\text{Classic}}$  is a 2-fold reciprocal space to the space  $\alpha$* .

The recalculation of the original data presented in **Figure 1** using Equations (4) and (6) is shown in **Figure 3**. This new intensity dependence is labelled  $I_{\text{Classic}}(s_{\text{Classic}})$ .

### 2.3.2. The Relict Reciprocal Space

There is a possibility to construct another reciprocal space which will be based directly on the angle  $\alpha$ . For a better comparison and lucidity we will use now for the angle  $\alpha$  the labelling  $\theta_{\text{Relict}}$ . *i.e.*

$$\alpha = \theta_{\text{Relict}}, \quad (7)$$

hence

$$L = 180^\circ/\alpha = 180^\circ/\theta_{\text{Relict}}. \quad (8)$$

In close analogy with Equation (A5) we now transform the anisotropy spectrum of CMB (relict) radiation into a reciprocal space ( $1/\lambda$ ) described by the parameter  $S_{\text{Relict}}$

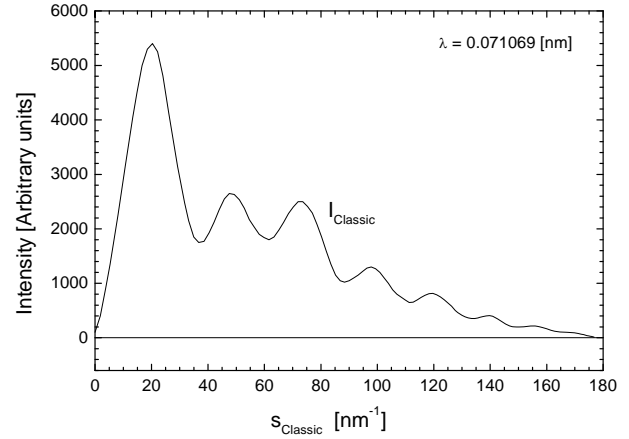
$$S_{\text{Relict}} = 4\pi(\sin\theta_{\text{Relict}})/\lambda, \quad (9)$$

where  $\lambda$  is the wavelength of the relict radiation. The space of the vector  $S_{\text{Relict}}$  will be further on called the “*Relict reciprocal space*”.

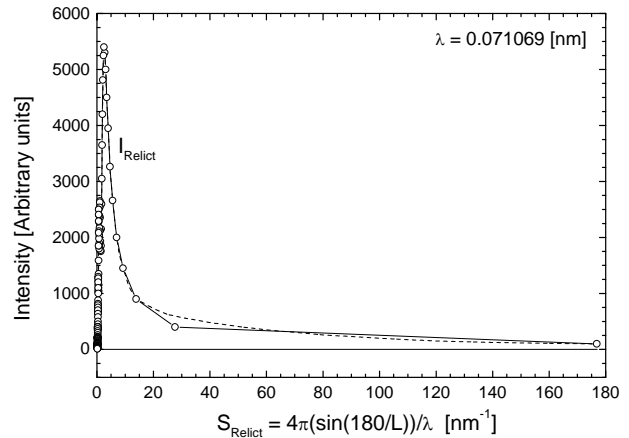
It should be noted that *quantities  $S_{\text{Relict}}$  and  $\theta_{\text{Relict}} = \alpha$  are in a direct relation*. The anisotropy spectrum of the CMB radiation rescaled on the basis of Equation (9) is here labelled  $I_{\text{Relict}}(S_{\text{Relict}})$  and is shown in **Figure 4**.

### 2.3.3. Construction of the Relict Radiation Factor

Generally, a correct scattering factor has to fulfil three criterions:



**Figure 3.** Anisotropy spectrum of the relict radiation shown in **Figure 1** is recalculated as a function of  $s_{\text{Classic}}$ , *i.e.* after a rescaling of the angular moment  $L$  and is labelled  $I_{\text{Classic}}(s_{\text{Classic}})$ . The rescaling of the angular moment  $L$  is realized on the basis of Equations (2), (4) and (6) and using the  $\text{MoK}_\alpha$  radiation wavelength  $\lambda = 0.071069$  [nm].



**Figure 4.** Anisotropy spectrum of the relict radiation shown in **Figure 1** is after a rescaling of the angular moment  $L$ , recalculated as a function of the relict reciprocal space vector  $S_{\text{Relict}}$  and labelled  $I_{\text{Relict}}(S_{\text{Relict}})$ . The rescaling of the angular moment  $L$  is realized on the basis of Equations (8), (9) and (11) using the  $\text{MoK}_\alpha$  radiation wavelength  $\lambda = 0.071069$  [nm]. The dashed line represents a smoothed curve.

- 1) the  $I_{\text{norm}}(s)$  curve should oscillate along the  $I_{\text{gas}}(s)$  curve and as a consequence according Equation (A9);
- 2) the curve  $I_{\text{distr}}(s)$  should oscillate along the zero value of the intensity axis;
- 3) the resulting RDF must not be contaminated by parasitic fluctuations due to bad scaling (see Section A2.) as a consequence of a bad course of the scattering factor.

The mutual relation between quantities  $I_{\text{norm}}(s)$ ,  $I_{\text{gas}}(s)$  and  $I_{\text{distr}}(s)$  is explained in the Appendix A, see equations (A9), (A10) and (B1) with (B2).

In **Figure 5** the calculation of the crucial curve  $I_{\text{gas}}$  is

undertaken for the relict radiation factor  $f_{\text{Relict}}$ . The form of this factor was determined by the trial and error method and is shown in **Figure 6**. In this figure is the factor  $f_{\text{Relict}}$  compared with the coherent ( $f_{\text{coh}}^X$ ) and incoherent ( $f_{\text{incoh}}^X$ ) atomic scattering factor for X-rays corresponding to the Hydrogen atom (according the International Tables for Crystallography [6]).

Similarly as for X-rays we have set the relict radiation factor  $f_{\text{Relict}}$

$$f_{\text{Relict}} = 1 \text{ for } s = 0 \quad (10)$$

and further, we have set in Equation (A7)  $Z = 1$  and  $m = 1$ , hence in Equation (A6) is  $K_m = 1$ . From this point of view our construction of the relict radiation factor  $f_{\text{Relict}}$  should formally correspond to a “hydrogen-like” particle.

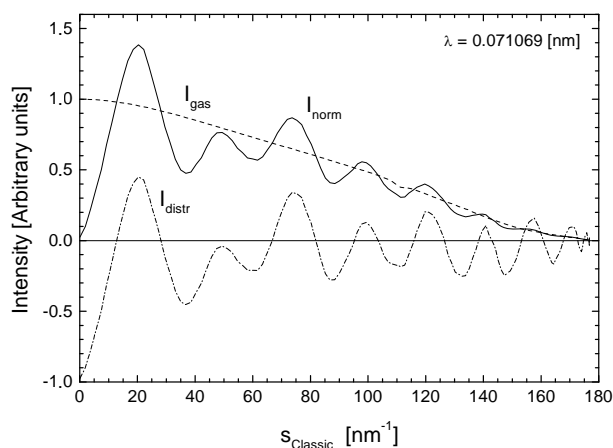
Further we have to point out that in connection with the presentation of the quantity  $I_{\text{gas}}(s)$  in Equation (A10) its course in **Figure 5** is given now by the relation

$$I_{\text{gas}}(s) = f_{\text{Relict}}^2 \cdot \quad (11)$$

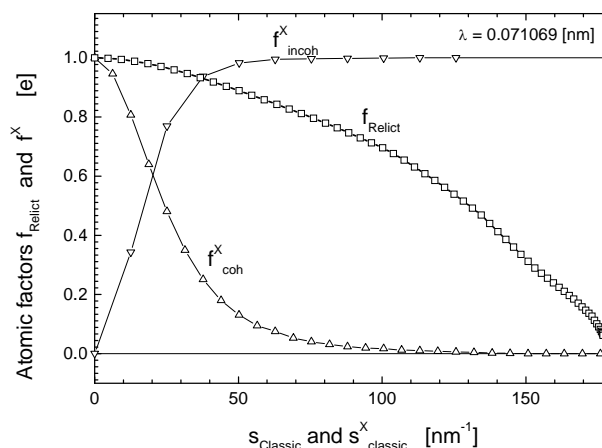
In **Figure 5** we see that the function  $I_{\text{norm}}(s)$  is properly oscillating along the function  $I_{\text{gas}}(s)$  and therefore the function  $I_{\text{distr}}(s)$  is properly oscillating along the zero line. The consequence is that we will obtain a “proper” radial distribution function, *i.e.* without any parasitic maxima, see the Subsection 3.1.

### 2.3.4. Relation between the Classic and Relict Distribution of distances

We rewrite now the basic Equation (A2) using the scat-



**Figure 5.** Calculation of quantities  $I_{\text{norm}}(s)$ —full line,  $I_{\text{gas}}(s)$ —dashed line (see Equation (11)) and of  $I_{\text{distr}}(s)$ —dashed dotted line, according Equations (A9), (A10) and (B1), (B2) using the “artificial” relict radiation factor  $f_{\text{Relict}}$  for the wavelength  $\lambda = 0.071069$  [nm]. Oscillations of the curve  $I_{\text{distr}}(s)$  are along the x-axis; hence the criterions set at the beginning of this section are fulfilled. See text for details.



**Figure 6.** Behaviour of the relict radiation factor  $f_{\text{Relict}}$  is shown. For comparison the courses of the classic coherent and incoherent X-ray atomic scattering factors  $f_{\text{coh}}^X$  and  $f_{\text{incoh}}^X$  for Hydrogen are included. The parameter  $s_{\text{Classic}}$  is defined in Equation (6), the parameter  $s_{\text{Classic}}^X$  is described in Equation (A5). Data for  $f_{\text{coh}}^X$  and  $f_{\text{incoh}}^X$  are taken from [6]. The calculation is demonstrated for the wavelength  $\lambda = 0.071069$  [nm].

tering vector in the classic reciprocal space  $s_{\text{Classic}}$ , see Equation (6).

$$\rho(r [\text{nm}^*]) = \rho_0^{\text{Medium}}(r) + \rho^{\text{Fourier}}(r, I(s_{\text{Classic}})), \quad (12)$$

where  $\rho_0^{\text{Medium}}(r)$  is the member which is not Fourier-dependent and describes the structure-less total disorder depending on the density of the matter.

The parameter  $r$  is measured in [nm\*] in order to emphasize that the calculation of the RDF  $\rho(r)$  is realized on the basis of the parameter  $s_{\text{Classic}}$ , which is dipped in a 2-fold reciprocal space (see Subsection 2.3.1.). In other words: the calculation of the RDF  $\rho(r)$  is realized in the reciprocal space of classic distances, which have the dimension [nm\*]. Here we again point out the fact, that classic distances are distances between Objects calculated on the basis of the function  $I_{\text{Classic}}(s_{\text{Classic}})$ , see **Figure 3**, which we analyze using Equation (A2) or (12).

In order to receive now the information in the real space of classic distances (characterized by the parameter  $R$ ) we must calculate the reciprocal value of the parameter  $r$ , hence the relation between  $r$  and  $R$  is

$$1/(r [\text{nm}^*]) = R [\text{nm}]. \quad (13)$$

It would be now possible to rewrite quite formally Equation (A2) using the scattering vector in the relict reciprocal space  $S_{\text{Relict}}$ , see Equation (9). Similarly as for Equation (12) we would receive

$$\rho(R) = \rho_0^{\text{Medium}}(R) + \rho^{\text{Fourier}}(R, I(S_{\text{Relict}})). \quad (14)$$

Quite hypothetically the RDF  $\rho(R)$  would then bring us information on the real space of relict distances, which have the dimension [nm]. Actually, however, a RDF will not be calculated in this case, because the distribution  $I(S_{\text{Relict}})$ , see **Figure 4**, is not convenient for a Fourier transform. The calculation of relict distances in the real space, *i.e.* of distances between complex Objects (big clusters) will be done on the basis of a theoretical calculation of the function  $I(S_{\text{Relict}})$  using the Debye formula (18) calculated for appropriate models, see later on Section 4.

### 3. Calculations in the Classic Reciprocal Space $s_{\text{Classic}}$

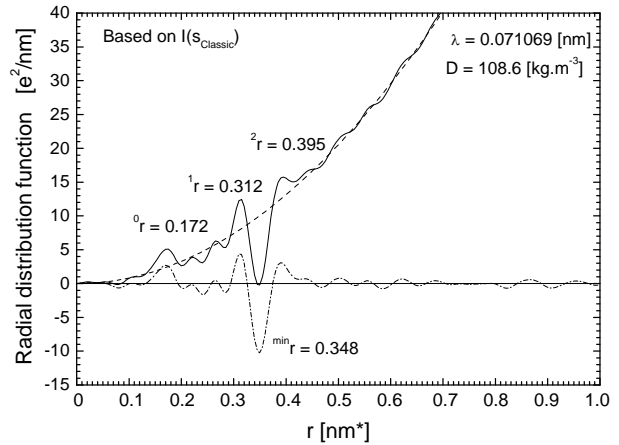
#### 3.1. Calculation of RDFs

In our first example we calculate in **Figure 7** the RDF of Objects corresponding to the Fourier transform of intensities  $\rho^{\text{Fourier}}(r, I(s_{\text{Classic}}))$  for the wavelength  $\lambda = 0.071069$  [nm] which is a frequently used wavelength ( $\lambda_{\text{MoK}\alpha}$ ) in e.g. structure analysis, see Equation (A2) and-or (12). The scaling of intensities has been already demonstrated in **Figure 5** on the basis of the relict radiation factor  $f_{\text{Relict}}$  constructed in **Figure 6**.

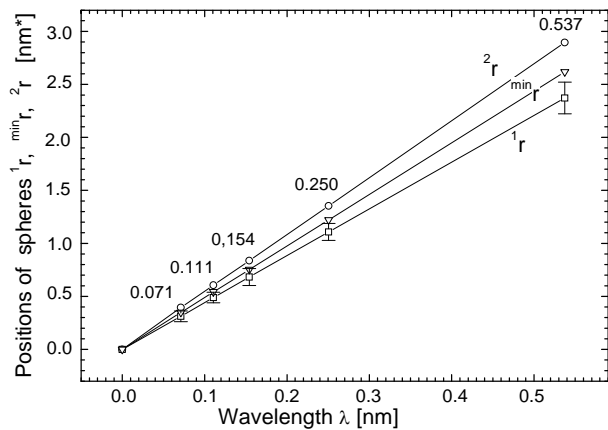
The calculated RDF shows a form typical for RDFs obtained for disordered materials. It turns out that in the region from 0.1 to 0.4 [nm\*] we observe peaks  $^0r$  and  $^1r$ . Moreover there is a minimum  $^{\text{min}}r$  which separates this region from a structure-less course starting at the position  $^2r$ . Such behaviour indicates the existence of ordering in the matter. In other words, there is a distinctive separation of the matter ending its ordering at  $^1r = 0.312$  [nm\*] from the residual structure-less phase which starts at  $^2r = 0.395$  [nm\*]. For these reasons we will consider as a boarder between the ordered and disordered state the gap at  $^{\text{min}}r = 0.348$  [nm\*].

In the same way we calculated RDFs for four more typical wavelengths, *i.e.* 0.110674 ( $\lambda_{\text{SeK}\alpha}$ ), 0.154178 ( $\lambda_{\text{CuK}\alpha}$ ), 0.250466 ( $\lambda_{\text{V K}\alpha}$ ) and 0.537334 [nm] ( $\lambda_{\text{SK}\alpha}$ ). From these calculations it follows that, as expected, the dependence of the magnitude of corresponding coordination spheres on the wavelength  $\lambda$  is linear, see **Figure 8**, moreover, all RDFs had the same appearance.

In this connection we have to point out, that the distances are measured in reciprocal space distances [nm\*] and that, with respect to Equation (13), these distances have to be recalculated to “real space” distances, e.g. in [km]. This recalculation is realized in **Table 1** only for the most important distance  $^{\text{min}}r = 0.348$  [nm\*]. Simultaneously we review this parameter for all wavelengths (**Figure 8**) and simultaneously extrapolate this distance to the wavelength of relict radiation photons  $\lambda = 1.9$



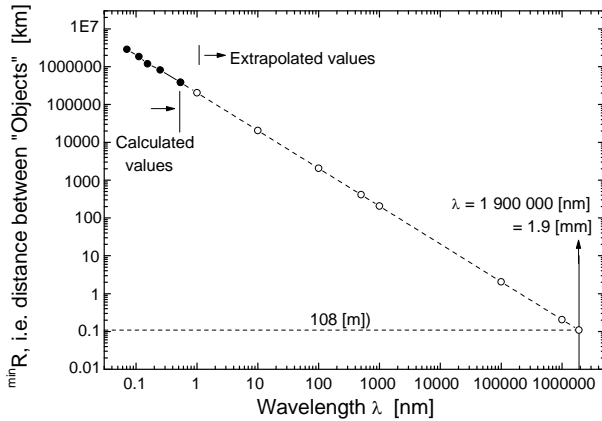
**Figure 7.** Calculation of the radial distribution function (RDF) according equations (A2) and-or (12) for the wavelength  $\lambda = 0.071069$  [nm]. The dashed-dotted line corresponds to the second member in equation (12), the dashed line is the first member in this equation (dependent on density) and full line is the sum of both components, see text for details. Value of the density  $D$  necessary to shift the minimum at 0.348 [nm\*] to positive values of the RDF is indicated in the upper right corner.



**Figure 8.** Dependences of most important distances, *i.e.* of coordination spheres  $^1r$  (squares),  $^2r$  (circles) separated by the minimum  $^{\text{min}}r$  (down triangles) on the wavelength  $\lambda$  in the reciprocal space [nm\*] according **Figure 7** and from analogical calculations for wavelengths 0.110674, 0.154178, 0.250466 and 0.537334 [nm]. For an easier survey error bars are inserted only for the sphere  $^1r$ .

[mm].

Real space distances  $^{\text{min}}R$  calculated in **Table 1** are visualized in **Figure 9**. The extrapolation to the wavelength of relict photons 1.9 [mm] indicates that for this wavelength the shortest  $^{\text{min}}R$  distances are of the order  $10^2$  meters. Later on (see Subsections 4. and 5.1.) the distance  $^{\text{min}}R$  will be ascribed to the distance between “Objects”.



**Figure 9.** Dependence of the real space distances  $^{\min}R$  (full circles) on the wavelength  $\lambda$  (see Table 1 for details). Simultaneously an extrapolation to a distance corresponding to the wavelength of CMB (relict) photons 1.9 [mm] is visualized (empty circles). Later on (Sections 4. and 5.1.) the quantity  $^{\min}R$  will describe the distance between “Objects”.

**Table 1.** Review of the most important distance  $^{\min}r$  characterizing the separation of the ordered region from the structure-less one on the wavelength  $\lambda$  (see Figure 8). Recalculation to the real space distances  $^{\min}R$  [km] is included. Extrapolation of this distance to the wavelength of relict radiation photons 1.9 [mm] is computed together with an estimate of final errors.

Review of the reciprocal space distance $^{\min}r$ in [nm*] on the basis of results presented in Figures 8 and 9		Recalculation of the reciprocal space distance $^{\min}r$ in [nm*] into the real space distance $^{\min}R$ [km]
$\lambda$ [nm]	$^{\min}r$ [nm*]	$^{\min}R$ [km] = $1/^{\min}r$ [nm* <sup>-1</sup> ]
0.071069	0.348	2,873,563
0.110674	0.542	1,845,018
0.154178	0.752	1,329,787
0.250466	1.221	819,001
0.537334	2.618	381,971
Extrapolation to higher wavelengths $\lambda$		
$\lambda$ [nm]	$^{\min}r$ [nm*]	$^{\min}R$ [km]
1	4.87	205,231
10	49	20,523
100	487	2052
500	2 436	410
1 000	4 873	205
1 000 000	4 872 561	0.205
1 900 000	9 257 865	0.108
<b>= 1.9 [mm]</b>	<b>= 9.3 ± 0.1 [mm*]</b>	<b>= 108 ± 2 [m]</b>

### 3.2. Calculation of the Density

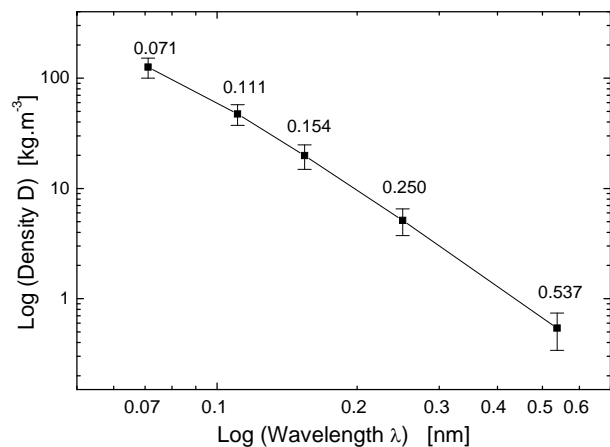
The calculation presented in **Figure 7** and repeated for four additional wavelengths enabled us to estimate the density of the matter, *i.e.* the important parameter effecting the first member  $\rho_0^{\text{Medium}}(r)$  in Equation (12). We simply supposed that the fluctuations of the RDF should not be negative. In order to shift in **Figure 7** the minimum at  $^{\min}r = 0.348$  [nm\*] to positive values we had to set the density to a value  $D = 108.60$  [kg·m<sup>-3</sup>]. In the same way we have determined densities for the remaining four wavelengths.

The results are summarized in **Figure 10** and **Table 2**. In the log-scale is the dependence of density on the wavelength nearly linear and therefore enables again an extrapolation to higher wavelengths. This extrapolation is presented in **Table 2** and visualized in **Figure 11**.

It follows from **Table 2** and **Figure 11** that the most probable medium density of density fluctuations of the matter with which CMB (relict) photons realized their last interaction is  $\sim 9 \cdot 10^{-23}$  [kg·m<sup>-3</sup>]. Taking in account the limits of our calculation then the density can be formally written as  $D = 10^{-22} \pm 10^{-3}$  [kg·m<sup>-3</sup>], see also **Figure 11** and **Table 2**.

### 4. Modelling in the Relict Reciprocal Space $S_{\text{Relict}}$

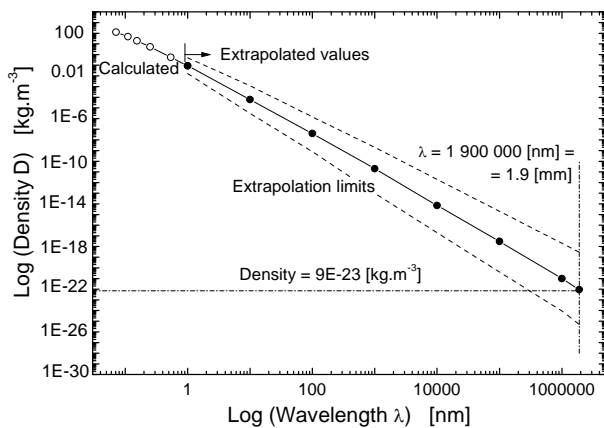
In the case when **Figure 4** should be an X-ray scattering picture of a disordered material (e.g. of a glass) then such record would represent a picture typical for a material with well developed clusters. Their mutual distance should then characterize the position of the “first” massive peak. It follows from theory and experience that it is



**Figure 10.** Dependence of macroscopic densities on short wavelengths. In the log-scale this dependence is nearly linear. Numerical values are given in Table 2. Numbers indicate wavelengths, for which the corresponding RDF was calculated.

**Table 2. Review of numerical values of densities according Figure 10 is presented. Extrapolation of the sequence of densities to higher wavelengths, especially to the wavelength of relict radiation photons 1.9 [mm] is shown. First five densities  $D$  were calculated following the description in Subsection 3.2. Possible final error is estimated and the values of the critical density according [7] and [8] are given.**

Wavelength $\lambda$ [nm]	Macroscopic density $D$ [kg·m <sup>-3</sup> ]
0.071069	108.6
0.110674	40.84
0.154178	17.18
0.250466	4.39
0.537334	0.46
Extrapolation to higher wavelengths $\lambda$	
$\lambda$ [nm]	$D$ [kg·m <sup>-3</sup> ]
1	9.0E-02
10	6.0E-05
100	4.0E-08
1 000	2.0E-11
1 000 000	1.0E-21
1 900 000 = 1.9 [mm]	9.0E-23 ± E-3
Critical density according [7,8]: $D_{\text{critical}} = 5.0$ to $7.0 \text{ E-}27$ [kg·m <sup>-3</sup> ]	



**Figure 11. Extrapolation of the dependence of densities on wavelengths  $\lambda$  to the wavelength of relict (CMB) photons  $\lambda = 1.9$  [mm]. Empty circles represent values shown already in Figure 10. Full circles are extrapolated values. Dashed lines show the limits of possible extrapolations.**

not possible to get from this peak information on the internal structure of Clusters, only on their magnitude and mutual distance.

The method which has to be used for an analysis of this type of scattering is a direct calculation of scattered

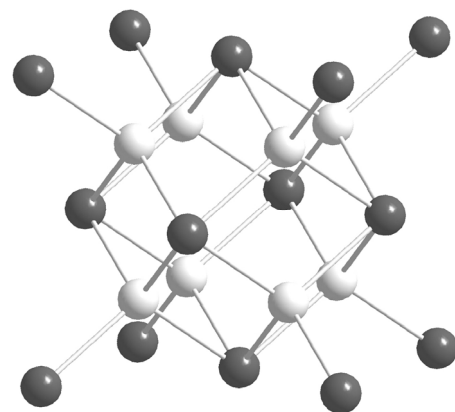
radiation on the basis of the Debye formula

$$I(S_{\text{Relict}}) = \sum_{i=1}^n \sum_{j=1}^n f_i f_j \left( \sin(d_{ij} S_{\text{Relict}}) \right) / (d_{ij} S_{\text{Relict}}). \quad (18)$$

Here  $f_i$  and  $f_j$  are the scattering factors of  $n$  input particles and  $d_{ij}$  are the distances in real space between all available particles in the model and  $S_{\text{Relict}}$  is the scattering vector in the relict reciprocal space defined in equation (9). It should be pointed out that as scattering factors  $f_i$  and  $f_j$  we have used now the relict radiation factor  $f_{\text{Relict}}$  calculated in Subsection 2.3.3. The summation is over all  $n$  particles in the model. This formula gives the average scattered intensity for an array of particles (or atoms in solid state physics) with a *completely random orientation in space to the incident radiation*.

Our model was quite simple: For the wavelength  $\lambda = 0.071069$  [nm] *the Cluster was a tetrahedron* (5 particles) with an inter-particle distance 0.263 [nm] *i.e.* located in a cube with an edge 0.607 [nm]. In order to find the best fit with the scattering curve according Equation (18), the distance between Clusters (tetrahedrons) had to be  $d = 3$  [nm], *i.e.* the tetrahedrons were located in positions of the basic skeleton, see **Figure 12**, characterized now by a side  $a = 6.93$  [nm]. This model had  $22 \times 5$  particles, *i.e.* a total of 110 particles. This calculation is shown in **Figure 13**.

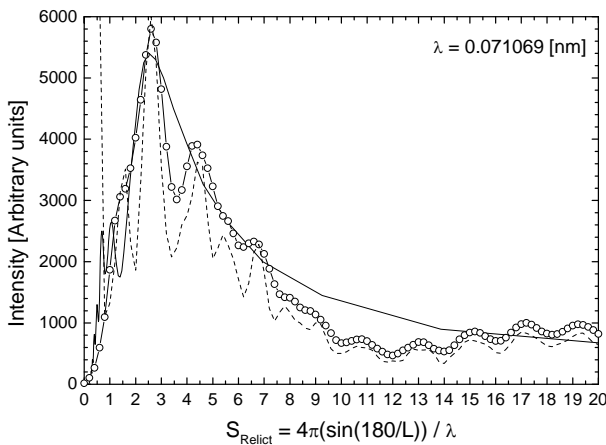
For all other wavelengths ( $\lambda \geq 0.110674$  [nm]) we had to increase the dimensions of the Cluster. *The Cluster had then the form of the skeleton shown in Figure 12* with an edge 0.607 [nm] and consisted of 22 particles (again with an inter-particle distance 0.263 [nm]) embedded in 8 edge-bound tetrahedrons. Only this Cluster occupied then the “positions” of the cubic *basic skeleton* shown in **Figure 12** forming now an Object. (A more



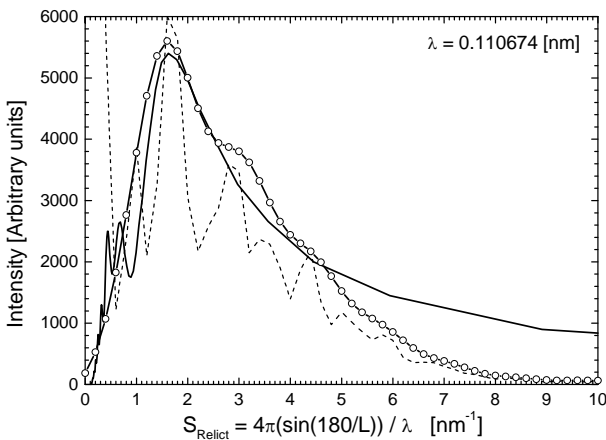
**Figure 12. The basic skeleton (and-or a part of a Cluster structure) consists of 22 “positions” formed by 8 edge-bound tetrahedrons. All positions are identical, for a better graphic representation are the centres of tetrahedrons drawn white. The picture has been constructed using programs [9] and [10].**



instructive schematic presentation of an Object is shown in **Figure 17** where Clusters are presented as small darker circles filled with “particles”.) When changing the dimension of this basic skeleton, we simultaneously changed again the distance  $d$  between Clusters. In order to reach for  $\lambda = 0.110674$  [nm] the correct position of the massive peak at  $1.6$  [ $\text{nm}^{-1}$ ] an inter-Cluster distance  $d = 4.65$  [nm] had to be used, *i.e.* the dimension of the skeleton was characterized by the side  $a = 10.74$  [nm]. This model had then  $22 \times 22$  particles, *i.e.* a total of 484 particles and simulated a part of the Object structure. The



**Figure 13.** Calculation of the profile of the recalculated anisotropy spectrum for  $\lambda = 0.071069$  [nm] based on a set of 22 Clusters with a mutual distance  $d = 3$  [nm]. The Cluster was formed by a tetrahedron (5 particles); hence there were 110 particles in a model, see text for details. Full line - experiment, empty circles - calculated scaled and smoothed curve, dashed line - calculated scaled scattering.



**Figure 14.** Calculation of the profile of the recalculated anisotropy spectrum for  $\lambda = 0.110674$  [nm] and for a set of 22 Clusters with a mutual distance  $d = 4.65$  [nm]. The Cluster consisted of 22 particles, hence there were 484 particles in the model, see text for details. Full line - experiment, empty circles—calculated scaled and smoothed curve, dashed line—calculated scaled scattering.

calculation is shown in **Figure 14**.

Calculations of Cluster distances for additional wavelengths (0.154178, 0.250466 and 0.537334 [nm]) have shown (see **Figure 15**) that the dependence of Cluster distances on the corresponding wavelength is linear. This fact enabled an extrapolation of the Cluster distance  $d$  to the wavelength of relict photons  $\lambda = 1.9$  [nm], see **Table 3**. This extrapolated distance is  $d_{\text{Relict}} = (12 \pm 1)$  [cm]. The extrapolation is visualized in **Figure 16**.

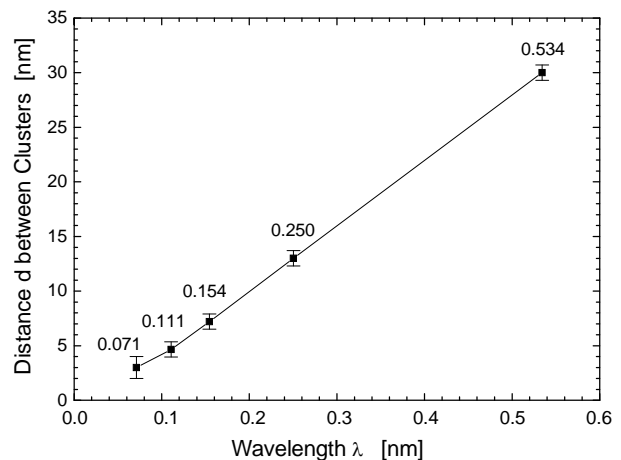
It should be noted that the recalculated anisotropy spectrum depends in this case directly on the angle  $\theta_{\text{Relict}}$  which is equal to the angle  $\alpha$  (see Equation (8)) and therefore a recalculation of the inter-Cluster distance  $d$  into real space distances is not necessary because the Debye formula analyzes the relict reciprocal space represented by the vector  $S_{\text{Relict}}$  directly in real space distances, see the quantity  $d_{ij}$  in Equation (18).

### 5. Discussion

In the following discussion we will concentrate on several important ideas which may arise when reading this paper.

In particular this contribution should demonstrate how the formalism imported from solid state physics could be useful in solving specific cosmological problems: It may shed some new light on the physical processes taking place in the primordial plasma.

First of all, according our opinion, this work points in favour of clustering processes and consequently to a cluster-like structure of the matter in the moment when



**Figure 15.** Dependence of distances  $d$  between Clusters on the wavelength  $\lambda$  (numerical values are shown). With exception of the “0.071 case” models consisted of 22 Clusters with 22 particles in each Cluster, *i.e.* a model included 484 particles. Inter-Cluster distances characterize the position of the massive peak, see Figures 13 and 14 and the text for details.

**Table 3. Extrapolation of distances  $d$  between Clusters to the wavelength of relict photons  $\lambda = 1.9$  [nm]. These distances influence the position of the massive peak, see Figures 14, 15 and 16. The estimate of the final error is based on errors given in Figure 15.**

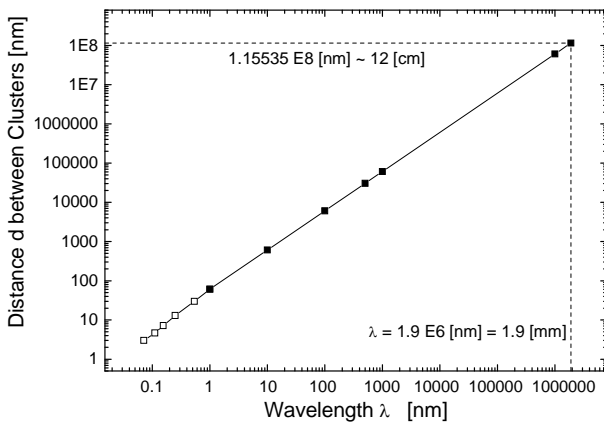
Wavelength $\lambda$ [nm]	Distance between Clusters $d$ [nm]
0.071069	$3.00 \pm 1.50$
0.110674	$4.65 \pm 1.00$
0.154178	$7.20 \pm 1.00$
0.250466	$13.00 \pm 1.00$
0.537334	$30.00 \pm 1.00$

Extrapolation to higher wavelengths $\lambda$	
$\lambda$ [nm]	$d$ [nm]
1	60.81
10	608
100	6081
500	30,404
1 000	60,808
100 000	6,080,792
1 000 000	60,807,919
1 900 000	115,535,046

<b>= 1.9 [mm]</b>	<b><math>d_{\text{Relict}} = 12 \pm 1</math> [cm]</b>
-------------------	---



**Figure 16. Extrapolation of distances  $d$  between Clusters to the wavelength  $\lambda = 1.9$  [mm]—full squares; calculated values—empty squares (see Figure 15 and Table 3).**

the universe became transparent for photons (see Subsection 5.1.).

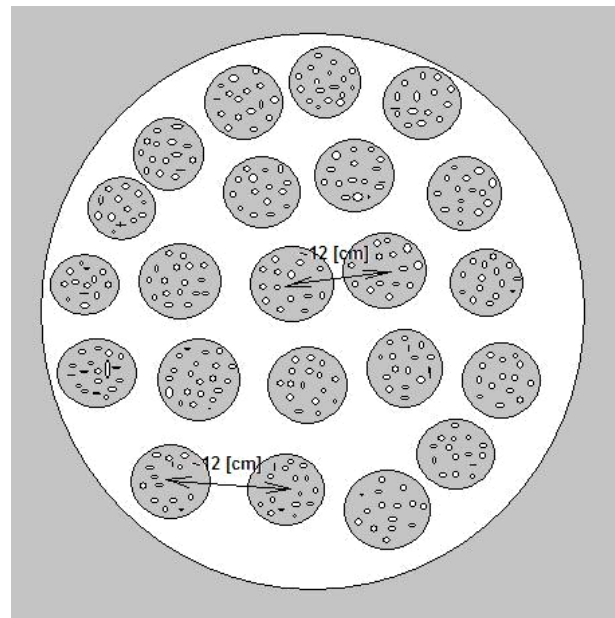
In the second place the new formalism enabled us a simple and general description of the interaction of relict

radiation with the matter and may help in an improvement of the theoretical predictions of the CMB pattern (see Subsection 5.2.).

Finally this new approach may be useful in the analysis of the CMB data. We have shown that the transformation of the anisotropy spectrum of relict radiation into a special two-fold reciprocal space and into a simple reciprocal space was able to bring quantitative data in real space. Problems with the transformation into reciprocal spaces, mainly with the use of the proper wavelength of relict photons will be discussed in Subsection 5.3.

### 5.1. The Cluster-Like Structure of the Primordial Matter

The most important consequence of our quantitative results obtained in Sections 3 and 4 is, according our opinion, the idea of clustering processes taking part in the formation of the primordial matter. There we have arrived to three distances, which we interpret in a following way: The first distance  $\sim 10^2$  [m], (Table 1) should indicate the distance between Objects (big clusters), the second one  $\sim 10^{-1}$  [m], (Table 3) should indicate the distance between smaller Clusters, while the internal struc-



**Figure 17. A schematic arrangement of Clusters (darker regions) with particles (small white points) in an Object (white region). In our model the distance between Objects is  $\sim 10^2$  [m], see Table 1. A detailed structure of a Cluster and of an Object in this model is presented in Figure 12. The most probable model distance between Clusters is  $\sim 10^{-1}$  [m], see Table 3. The distance between particles in the model is 0.26 [nm]. We estimate that there are  $\sim 10^{11}$  particles in one Object and  $\sim 10^2$  particles in one Cluster (see Appendix C1 and C2) and  $\sim 10^9$  Clusters in one Object, see Appendix C3.**

ture of a single Cluster was formed in the model by 22 particles with a medium particle distance 0.26 [nm], see Section 4.

In **Figure 17** we show a schematic picture of this cluster model. The big circle represents an Object. An Object is a clump of Clusters, where only a part of this clump was simulated in the model (the model of an Object had 22 Clusters each consisting of 22 particles, *i.e.* it consisted of a total of 484 particles).

Although this model gave a sufficiently well agreement with the width of the massive peak, as demonstrated in **Figure 14**, our estimates (see Appendix C) show that the number of Clusters as well as the number of particles in one Cluster is greater, *i.e.* that there may be as far as  $10^{11}$  particles in one Object and  $10^2$  particles in one Cluster. That the density plays an important role in these calculations will be discussed in Subsection 5.4.

Even when the cluster model gave a good profile of the massive peak at e.g. 1.62 [nm], than such a model of internal structure of Clusters cannot be a unique one, because the calculation of the profile is not sensitive to the internal cluster structure, nevertheless the cluster-like character of the modelling process has to be maintained.

## 5.2. The Relict Radiation Factor

We have already pointed out in Subsection 2.1. why during the analysis of the CMB spectrum it has not been possible to apply conventional atomic scattering factors used in solid state physics and why a new special factor reflecting the complexity of interaction processes of photons with the primordial matter has to be constructed. It is important to have on mind that the description of these interactions is possible *only in a special two-fold reciprocal space* into which the CMB spectrum was transformed. We have called this new factor the *relict radiation factor* and it had to substitute all complicated processes which participate in the formation of the angular power spectrum of CMB radiation.

Because relict photons realize their interaction with various kinds of particles and we have generated only one radiation factor, this factor represents, as a matter of fact, a medium from all possible individual relict radiation factors. In this way *this new formalism offers a general description of the interaction of relict radiation with the matter* and simultaneously reflects the complexity of processes which influence the anisotropy spectrum of CMB radiation from the cosmological point of view [5].

During our study we have concentrated on three important facts which may justify the attempt to interpret the anisotropy spectrum of CMB radiation as *a consequence of the interaction of photons with density fluctuations* which characterize the distribution of particles be-

fore the recombination process.

The first fact is that temperature fluctuations in the CMB spectrum are related to fluctuations in the density of matter in the early universe and thus carry information about the initial conditions for the formation of cosmic structures such as galaxies, clusters or voids [11].

Secondly, it is the fact that the information on these density fluctuations in the distribution of particles (electrons, ions, etc.) has been brought by photons. Photons which we observe from the microwave background have travelled freely since the matter was highly ionized and they realized their last Thomson scattering (see already Subsection 2.1.). If there has been no significant early heat input from galaxy formation then this happened when the Universe became cool enough for the protons to capture electrons, *i.e.* when the recombination process started [12].

The third fact is that the anisotropy spectrum is angular dependent, see **Figure 1**.

Although we know that the anisotropy spectrum of CMB radiation, as presented in **Figure 1**, has *no direct connection* with a scattering process of photons, it was the *transformation of the CMB spectrum into a two-fold reciprocal space*, which enabled us to interpret the anisotropy spectrum of CMB radiation as a *result of an interaction process of photons with density fluctuations of the matter* represented by electrons, ions or other particles. This approach enabled us to reach an advantageous approximation of this process.

The process consisted of two steps: First of all we have constructed in Subsection 2.3.1. an angular reciprocal space characterized by the “scattering” angle  $\theta_{\text{Classic}}$ , see Equations (2) and (4). This space is reciprocal to the space characterized by the angle  $\alpha$  ( $\alpha$  is the angle between two points in which the temperature fluctuations of CMB radiation are compared to an overall medium temperature).

Then, we have constructed an additional “classic” reciprocal space ( $1/\lambda$ ) into which the first one (the  $\theta_{\text{Classic}}$  space) was dipped, by defining in this new “two-fold” reciprocal space the classic scattering vector  $s_{\text{Classic}}$ , see Equation (6). Only after these transformations we treated in this new classic reciprocal space the transformed anisotropy CMB spectrum as a scattering picture of relict photons.

It was only this space in which we simulated (in Subsection 2.3.3.) the interaction of CMB (relict) photons with density fluctuations by the relict radiation factor  $f_{\text{Relict}}$ .

The criterion for the trial and error construction of the relict radiation factor  $f_{\text{Relict}}$  has been that this factor had to fulfil the three requirements set at the beginning of Subsection 2.3.3. Only then it was secured that after the Fou-

rier transform, according Equations (A2) and-or (12), there will not be any (or at least small) parasitic fluctuations on the curve  $\rho(r)$  and-or  $\rho^{\text{Fourier}}$ . That we have achieved these demands is documented in **Figure 7** where we do not see any parasitic fluctuations on the curve  $\rho^{\text{Fourier}}$  and as a consequence on the curve  $\rho(r)$ .

To summarize: It is true that in our formal analogy between scattering of e.g. short-wave radiation on disordered matter (**Figure 2**) and “scattering” of CMB photons on electrons, ions and other particles (**Figure 1**) is an essential difference, because the physical processes are completely different, e.g. the scattering process itself, length scales involved, etc., however, the difference between physical processes is reflected and simultaneously eliminated by the special relict radiation factor  $f_{\text{Relict}}$  (Subsection 2.3.3.), which we have included into all calculations based on the classic two-fold *reciprocal space* (see Subsection 2.1.). Moreover, additional calculations in the relict reciprocal space (see Subsection 4.) based on the *transformed* angular power spectrum of relict radiation (see  $I_{\text{Relict}}(S_{\text{Relict}})$  in **Figure 4**) and thus present an information on distance relations between Clusters (formed by particles) in real space.

### 5.3. The Wavelength Problem

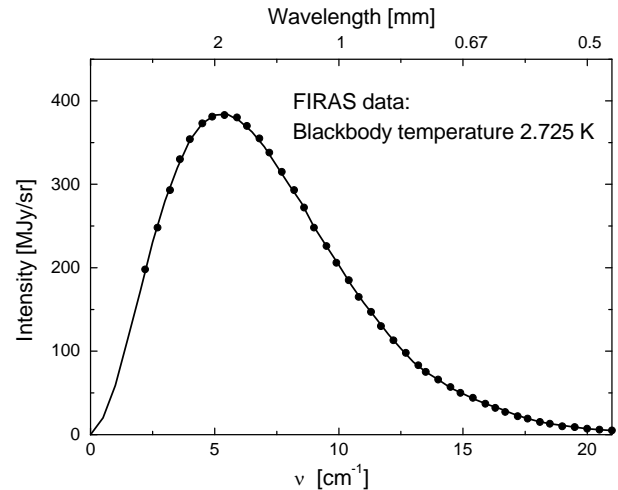
The problem is to which wavelength of relict photons we have to relate our calculations. One possibility may be to refer this wavelength to that time when 379.000 years after the Big Bang the Universe cooled down to 3000 K and the ionization of atoms decreased already only to 1%. Then according Wien’s law

$$\lambda_{\text{max}} = b/T \quad (16)$$

where  $\lambda_{\text{max}}$  is the peak wavelength,  $T$  is the absolute temperature of the blackbody, and  $b$  is a constant of proportionality called Wien’s displacement constant,  $b = 2.8978 \times 10^{-3}$  [mK], we obtain for the temperature 3000 K a wavelength value  $\lambda_{\text{max}} = 966$  [nm], see [13].

However, simultaneously we must be aware of the fact that we are analyzing CMB photons *now* when the temperature of the universe, due to its expansion, is 2.725 K. Then the wavelength of photons according the Wien’s law should be  $\sim 1$  [mm].

On the other hand the COsmic Background Explorer (COBE) measured with the Far Infrared Absolute Spectrophotometer (FIRAS) the frequency spectrum of the CMB, which is very close to a blackbody with a temperature 2.725 K [11,14]. The results are shown in **Figure 18** in units of intensity (see the text to **Figure 18**). It follows that the wavelength corresponding to the maximum is 1.9 [mm].



**Figure 18.** Dependence of the intensity of the CMB radiation on frequency as measured by the COBE Far InfraRed Absolute Spectrophotometer (FIRAS) ([11,14]). The thick curve is the experimental result; the points are theoretically calculated for an absolute black body with a temperature of 2.725 [K]. The x axis variable is the frequency in  $[\text{cm}^{-1}]$ . The y-axis variable is the power per unit area per unit frequency per unit solid angle in MegaJanskies per steradian [sr], (1 [Jansky] is a unit of measurement of flux density used in radioastronomy, abbreviated “Jy” (1 [Jansky] is  $10^{-26}$   $[\text{W}\cdot\text{m}^{-2}\cdot\text{Hz}^{-1}]$ ).

After all we have decided to relate our results to the wavelength of CMB photons  $\lambda = 1.9$  [mm] which corresponds to the maximum of the intensity distribution. Because the distribution of the spectrum covers a relatively broad interval of wavelengths, see **Figure 18**, calculations based on the wavelength 1.9 [mm] should then represent the most probable estimate. Moreover, this consideration is supported by the fact that the angular distribution of CMB radiation is the same for all wavelengths.

However, on the basis of graphs in **Figures 10, 12** and **16** an easy recalculation of distances and-or of the density would be possible when another CMB photons wavelength would be considered as more appropriate.

### 5.4. The Density of the Mass and Distances between Objects, Clusters and Particles

The way how we arrived to numbers characterizing the density of the matter was described in Subsection 3.2. In a conventional X-ray analysis the density is the macroscopic density of the material under study. Therefore we suppose that also in this case the density which influences the parabolic shape of the curve of total disorder (see the first member on the right side of equation (A2) and-or (12) and **Figure 8**) should be understood as a *real medium density of density fluctuations*.

The dependence of the density on the wavelength as demonstrated in **Figures 11** and **12** is not perfectly linear; therefore we have marked in **Figure 11** the extent of possible linear dependences. This result can be formally written as

$$D = 10^{-22} \pm 10^{-3} \text{ [kg}\cdot\text{m}^{-3}\text{]}. \quad (17)$$

This medium value is about  $10^5$  times higher than the “critical density”  $D_{\text{critical}} \sim (5 \text{ to } 7) \times 10^{-27} \text{ [kg}\cdot\text{m}^{-3}\text{]}$ , see **Table 2**.

Further, we should have in mind that the *local density* in a Cluster or in an Object has to be greater. We are able to document this fact on the basis of our Cluster model. Based on particle distances  $d_{\text{particles}} = 0.263 \text{ [nm]}$ , we have simulated a part of the Cluster structure by a cube with an edge  $a_{\text{Cluster}} = 0.607 \text{ [nm]}$ . There were 22 particles in this cube which can be closed in a sphere with a radius  $R_{\text{Cluster}} = 2d_{\text{particles}} = 2 \times 0.263 \text{ [nm]} = 0.53 \text{ [nm]}$ . The volume of this sphere is  $V_{\text{Cluster}} = 0.62 \text{ [nm}^3\text{]} = 0.62 \times 10^{-27} \text{ [m}^3\text{]}$ . Supposing that particles are represented according expression (C6) by their medium mass  $m_{\text{part}}^{1:1:1} = 2.77 \times 10^{-27} \text{ [kg]}$ , we obtain for the *density in the Cluster* the value

$$D_{\text{Cluster}} = (22 \times m_{\text{part}}^{1:1:1}) / V_{\text{Cluster}} = 60.94 / 0.62 = 98 \text{ [kg}\cdot\text{m}^{-3}\text{]}, \quad (18)$$

*i.e.* a value approaching density values known from solid state physics (*i.e.* values lying between the densities of gases and liquids).

At the same time we have to take in account that the estimates concerning the density of matter are really complicated. The microwave light seen by the Wilkinson Microwave Anisotropy Probe (WMAP), suggests that fully 72% of the matter density in the universe appears to be in the form of dark energy [15] and 23% is dark matter. Only 4.6% is ordinary matter. So less than 1 part in 20 is made out of matter we have observed experimentally or described in the standard model of particle physics. Of the other 96%, apart from the properties just mentioned, we know “absolutely nothing” [16]. In this connection we consider the density value we have received ( $9 \times 10^{-23} \text{ [kg}\cdot\text{m}^{-3}\text{]}$ ) as the density of the ordinary matter.

Last remark should be given to the probability of Object interactions in the case of their apparently large mutual distances ( $\sim 10^2 \text{ [m]}$ ). It follows from the Maxwell speed distribution that the root mean square particle velocity  $v$  corresponding to the temperature  $T = 3000 \text{ [K]}$ , is

$$v = \sqrt{3kT/m}, \quad (19)$$

where  $k$  is the Boltzmann constant ( $k = 1.38 \times 10^{-23} \text{ [Joule}\cdot\text{K}^{-1}\text{]}$ ) and  $m$  is the mass of the particle, which may be here for example the mass of the proton  $m = 1.67 \times 10^{-27} \text{ [kg]}$ . Then we obtain

$$\begin{aligned} v &= \sqrt{(3 \times 1.38 \times 10^{-23} \times 3 \times 10^3) / (1.67 \times 10^{-27})} \\ &= \sqrt{12.42 \times 10^{-20} / 1.67 \times 10^{-27}} \\ &= 8.6 \times 10^3 \text{ [m}\cdot\text{s}^{-1}\text{]} \end{aligned}$$

This is already a velocity, which should make possible an intensive interaction of Objects formed by Clusters consisting of particles.

## 6. Conclusions

A formalism of solid state physics has been applied to provide an additional tool for the research of cosmological problems. It was demonstrated how this new approach could be useful in the analysis of the CMB data. After a transformation of the anisotropy spectrum of relict radiation into a special two-fold reciprocal space it was possible to propose a simple and general description of the interaction of relict photons with the matter 380.000 years after the Big-Bang by a “relict radiation factor”. This factor, which may help in an improvement of the theoretical predictions of the CMB pattern, enabled us to process the transformed CMB anisotropy spectrum by a Fourier transform and thus arrive to a radial electron density distribution function (RDF) in a reciprocal space.

As a consequence it was possible to estimate distances between Objects of the order of  $\sim 10^2 \text{ [m]}$  and the density of the ordinary matter  $\sim 10^{-22} \text{ [kg}\cdot\text{m}^{-3}\text{]}$ . Another analysis based on a direct calculation of the CMB radiation spectrum after its transformation into a simple reciprocal space and combined with appropriate structure modelling confirmed the cluster structure. It indicated that the internal structure of Objects may be formed by Clusters distant  $\sim 10^{-1} \text{ [m]}$ , whereas the internal structure of a Cluster consisted of particles distant  $\sim 0.3 \text{ [nm]}$ .

In this way the work points in favour of clustering processes and to a cluster-like structure of the matter and thus may contribute to the understanding of the structure of density fluctuations and hence to a refinement of parameters describing the Standard Model of Cosmology [17]. Simultaneously, the work sheds more light on the structure of the universe in the moment when the universe became transparent for photons. On the basis of quantitative considerations it was possible to estimate the number of particles (protons, helium nuclei, electrons and other particles) in Objects and Clusters and the number of Clusters in an Object.

## 7. Acknowledgements

My thanks are due to Prof. Richard Gerber (University of Salford, Manchester) for discussion and proposals di-

rected to the final presentation of this paper, to Mgr. Radomír Šmída, PhD (Institute of Physics, Acad. Sci. of the Czech Republic) for comments, proposals and discussion concerning this article, to Prof. Karel Segeth (Institute of Mathematics, Acad. Sci. of the Czech Republic) for discussions and help in clarifying some aspects of the Fourier transform, to Prof. Jan Kratochvíl (Department of Physics, Faculty of Civil Engineering, Czech Technical University in Prague) for discussions pointing out several inconsistencies in the original conception of the article. Last acknowledgement is due to Dr. Jiří Hybler (Institute of Physics, Acad. Sci. of the Czech Republic) for help in the preparation of **Figure 12** presenting a part of a Cluster skeleton.

## 8. References

- [1] J. L. Sievers, J. R. Bond, J. K. Cartwright, C. R. Contaldi, B. S. Mason, S. T. Myers, S. Padin, T. J. Pearson, U.-L. Pen, D. Pogosyan, S. Prunet, A. C. S. Readhead, M. C. Shepherd, P. S. Udomprasert, L. Bronfman, W. L. Holzappel and J. May, "Cosmological Parameters from Cosmic Background Imager Observations and Comparisons with BOOMERANG, DASI, and MAXIMA," *Astrophysics Journal*, Vol. 591, No. 2, 2003, pp. 599-622. [doi:10.1086/375510](https://doi.org/10.1086/375510)
- [2] G. Hinshaw, D. N. Spergel, L. Verde, R. S. Hill, S. S. Meyer, C. Barnes, C. L. Bennett, M. Halpern, N. Jarosik, A. Kogut, E. Komatsu, M. Limon, L. Page, G. S. Tucker, J. Weiland, Wollack E. and E. L. Wright, "First-Year Wilkinson Microwave Anisotropy Probe (WMAP) observations: The Angular Power Spectrum," *Astrophysical Journal, Supplement Series*, Vol. 148, No. 1, 2003, pp. 135-159. [doi:10.1086/377225](https://doi.org/10.1086/377225)
- [3] L. Červinka, "Several Remarks on the Medium-Range Order in Glasses," *Journal of Non-Crystalline Solids*, Vol. 1, No.1-3, 1998, pp. 1-17. [doi:10.1016/S0022-3093\(98\)00457-8](https://doi.org/10.1016/S0022-3093(98)00457-8)
- [4] L. Červinka, J. Bergerová, L. Tichý and F. Rocca, "A Contribution to the Structure of Ge-Se-Ag Glasses," *Physics and Chemistry of Glasses*, Vol. 46, No. 4, 2005, pp. 444-450.
- [5] W. Hu, D. Scott, N. Sugiyama and M. White, "The Effect of Physical Assumptions on the Calculation of Microwave Background Anisotropies," *Physical Review*, Vol. D52, 1995, pp. 5498-5515.
- [6] J. C. Wilson and E. Price, Editors, "International Tables for Crystallography," Volume C, *Mathematical, Physical and Chemical Tables*, Second Edition, Published for International Union of Crystallography, Kluwer Academic Publishers, Dordrecht, 1999.
- [7] G. Smoot and K. Davidson, "Wrinkles in Time," Avon, New York, 1977, p. 158.
- [8] J. Silk, "Big Bang," Freeman & Co. Publishers, New York, 1977, p. 299.
- [9] V. Petříček, M. Dušek and L. Palatinus, "The Crystallographic Computing System," Institute of Physics, Praha, 2006, Czech Republic.
- [10] K. Brandenburg, "Program DIAMOND, Version 2.1c," Crystal Impact GbR, Bonn, Germany, 1999.
- [11] E. L. Wright, J. C. Mather, D. J. Fixsen, A. Kogut, R. E. Eplee, Jr., R. B. Isaacman, S. M. Read, R. A. Shafer, C. L. Bennett, N. W. Boggess, E. S. Cheng, S. Gulkis, M. G. Hauser, M. Janssen, T. Kelsall, P. M. Lubin, S. H. Moseley, Jr., T. L. Murdock, R. F. Silverberg, G. F. Smoot, R. Weiss and D. T. Wilkinson, "Interpretation of the COBE FIRAS CMBR Spectrum," *Astrophysics Journal*, Vol. 420, No. 2, 1994, pp. 450-456. [doi:10.1086/173576](https://doi.org/10.1086/173576)
- [12] M. White, D. Scott and J. Silk, "Anisotropies in the Cosmic Microwave Background," *Annual Review of Astronomy and Astrophysics*, Vol. 32, 1994, pp. 319-370. [doi:10.1146/annurev.aa.32.090194.001535](https://doi.org/10.1146/annurev.aa.32.090194.001535)
- [13] R. Šmída, Institute of Physics, Academic Science of the Czech Republic, 2010 (Private Communication).
- [14] J. C. Mather, E. S. Cheng, D. A. Cottingham, R. E. Eplee, Jr., D. J. Fixen, T. Hewagama, R. B. Isaacman, K. A. Jensen, S. S. Meyer, P. D. Noerdlinger, S. M. Read, L. P. Rosen, R. A. Shafer, E. L. Wright, C. L. Bennett, N. W. Boggess, M. G. Hauser, T. Kelsall, S. H. Moseley Jr., R. F. Silverberg, G. F. Smoot, R. Weiss and D. T. Wilkinson, "Measurement of the Cosmic Microwave Background Spectrum by the COBE FIRAS Instrument," *Astrophysics Journal*, Vol. 420, No. 2, 1994, pp. 439-444. [doi:10.1086/173574](https://doi.org/10.1086/173574)
- [15] J. C. Wheeler, "Cosmic Catastrophes," Cambridge University Press, ISBN 0521857147, 2007, pp. 282.
- [16] L. Smolin, "The Trouble with Physics," Mariner Books, New York, 2007, p. 16.
- [17] D. Scott, "The Standard Cosmological Model," *Canadian Journal of Physics*, Vol. 84, No. 6-7, 2006, pp. 419-435. [doi:10.1139/p06-066](https://doi.org/10.1139/p06-066)
- [18] K. Steeb, "Springer Tracts in Modern Physics—Ergebnisse der exakten Naturwissenschaften," Vol. 47, Springer-Verlag, Berlin, 1968, pp. 1-66.
- [19] R. Hultgren, N. S. Gingrich and B. E. Warren, "The Atomic Distribution in Red and Black P and the Crystal Structure of Black P," *Journal of Chemical Physics*, Vol. 3, 1935, p. 351. [doi:10.1063/1.1749671](https://doi.org/10.1063/1.1749671)
- [20] J. Krogh Moe, "A Method for Converting Experimental X-Ray Intensities to an Absolute Scale," *Acta Crystallographica*, Vol. 9, No. 11, 1956, pp. 951-953. [doi:10.1107/S0365110X56002655](https://doi.org/10.1107/S0365110X56002655)

## Appendix A: Basic Equations

Generally the intensity of radiation scattered<sup>2</sup> on a matter (solid, liquid) offers us information on the structure of a material of any kind in the reciprocal space. The relation between the reciprocal and real space is mediated by the Fourier transform of the radiation intensity scattered by a disordered material.

The basic formula transforming the reciprocal space information into the real space one is in the case of non-crystalline (non-periodic) materials [18]

$$\rho(r) = 4\pi r^2 \sum_m a_m K_m \rho_m^{el}(r). \quad (A1)$$

In a more detailed description the quantity  $\rho(r)$  is then expressed as

$$\rho(r) = 4\pi r^2 \sum_m a_m K_m \rho_0^{el}(r) + (2r/\pi) \int_0^{s_{\max}} si(s) \sin(rs) \exp(\tau s^2) ds \quad (A2)$$

and describes the radial electron density distribution function (RDF) in real space in the case when the atomic scattering factor  $f_m$  (see Equation (A6)) is given in electrons [e]. The parameter  $r$  is the distance of an arbitrary atom from the origin *in real space units*.

In Equation (A2)  $a_m$  are the concentrations of elements composing the matter ( $\sum_m a_m = 1$ ),  $\rho_m^{el}(r)$  are the elemental contributions of electron density to the overall electron density, *i.e.* it is the electron density around an atom of kind  $m$ , the factor  $\exp(\tau s^2)$  is an artificial temperature factor in which usually  $\tau = -0.010$ ,  $\rho_0^{el}$  is the mean electron density in a totally disordered material, which can be deduced from the macroscopic density via the Avogadro number  $L$

$$\rho_0^{el} = (L/M) \times D \times 10^{-21} \times \sum_m a_m Z_m, \quad (A3)$$

where  $Z_m$  is the atomic number of kind  $m$ ,  $D$  is the macroscopic density in  $[g \cdot cm^{-3}]$  and  $M$  is the molecular weight

$$M = \sum_m a_m W_m, \quad (A4)$$

$W_m$  are corresponding atomic weights. The factor  $10^{-21}$  in Equation (A3) is a consequence of the fact that the parameter  $r$  is in [nm].

The parameter  $s$  is in Equation (2) related with the wavelength  $\lambda$  of scattered radiation by the formula

$$s = 4\pi(\sin \theta)/\lambda. \quad (A5)$$

Here is  $s = s - s_0$ , where  $s_0$  is the vector of the incident and  $s$  the vector of the scattered radiation in the recipro-

<sup>2</sup>The term “scattering” (e.g. of radiation) is used throughout the Appendix, however, in the moment when in the quantity  $f_m$  (see equation (A6)) the atomic scattering factor is substituted by the relict radiation factor, see Subsections. 2.1. and 5.2. we speak about *an interaction of photons with the primordial matter*.

cal space.

Further,  $\theta$  is the angle between the incident and scattered radiation (X-rays or neutrons) and  $\lambda$  is the wavelength of this radiation and  $K_m$  is the effective number of electrons in an atom of kind  $m$

$$K_m = f_m / f_e, \quad (A6)$$

where  $f_m$  is the atomic scattering factor for X-rays for an atom of the kind  $m$  (see already Subsection 2.1.) and  $f_e$  is the atomic scattering power of an electron for X-rays

$$f_e = \sum_m a_m f_m / \sum_m a_m Z_m \quad (A7)$$

During a conventional experiment (e.g. see **Figure 2**), *i.e.* using  $Mo_{K\alpha}$  radiation, we have  $\lambda_{\text{Classic}} = 0.071069$  [nm] and the maximum possible value of  $s_{\text{Classic}}$  corresponding to  $\theta = 90^\circ$  is then according Equation (A5)

$$s_{\text{Classic}}^{\max} = 4\pi/\lambda_{\text{Classic}}^{Mo} = 176.819 [\text{nm}^{-1}]. \quad (A8)$$

Here we are starting to use the subscript “Classic”, which should point out that the scattering vector in the reciprocal space  $s_{\text{Classic}}$  will be considered in the same way as in the “classic” conventional non-crystalline case.

In Equation (A2) is  $i(s)$  the experimentally obtained scattered intensity of radiation,  $I_{\text{corr}}$  is this intensity corrected for various factors<sup>3</sup> and properly scaled for the absolute value of scattering, hence

$$i(s) = I_{\text{distr}} = (I_{\text{corr}}(s) - I_{\text{gas}}(s)) / f_e^2, \quad (A9)$$

the parameter  $f_e^2$  is acting here as a sharpening function.

The general formula for the scattering on gas  $I_{\text{gas}}(s)$  is

$$I_{\text{gas}}(s) = \sum_m a_m f_m^2 + \sum_m a_m^{\text{incoh}} f_m, \quad (A10)$$

where  $f_m^{\text{incoh}}$  are the scattering factors for the incoherent (Compton) scattering, see **Figure 6**.

The labelling  $I_{\text{distr}}$  for  $i(s)$  is used in Appendix B, where the scaling methods, important for a correct Fourier transform, are reviewed.

## Appendix B: The Scaling Problem

In Equation (A9) we have already introduced the quantity  $I_{\text{corr}}(s)$ , *i.e.* the corrected experimental scattered intensity. However, in order to arrive to a correct RDF,  $I_{\text{corr}}(s)$  must be scaled to the  $I_{\text{gas}}(s)$  function in the absolute scale of atomic scattering, see Equation (A10).

In the simplest scaling method we suppose that for high  $s$ -values there are not any scattering effects on the corrected experimental curve  $I_{\text{corr}}(s)$  and therefore the

<sup>3</sup>In a conventional experiment the scattered intensity is corrected for scattering on “air”, absorption, divergency of the X-ray beam, Lorentz and polarization factor. During our calculations we have included only the polarization factor.

$I_{\text{corr}}(s)$  and the  $I_{\text{gas}}(s)$  curves should be equal. Then the scaling parameter  $a_{\text{HSV}}$  is for  $s \rightarrow s_{\text{max}}$  easily calculated as

$$a_{\text{HSV}} = I_{\text{gas}}(s)/I_{\text{corr}}(s). \quad (\text{B1})$$

As a consequence we obtain in the whole interval of  $s$ -values a scaled scattered intensity  $^{\text{HSV}}I_{\text{norm}}(s)$  represented by the equation

$$^{\text{HSV}}I_{\text{norm}}(s) = a_{\text{HSV}}I_{\text{corr}}(s). \quad (\text{B2})$$

The function  $^{\text{HSV}}I_{\text{norm}}(s)$  oscillates around the  $I_{\text{gas}}(s)$  curve. Following Equation (A9), we subtract the scattering on gas and obtain the most important function  $I_{\text{distr}}$ , see **Figure 5**.

There are several other scaling methods. An integral method [19] is characterized by a scaling factor  $a_{\text{HGW}}$  and supposes that the areas under the experimental scattering curve  $I_{\text{corr}}(s)$  and the structure-less  $I_{\text{gas}}(s)$  curve should be equal. Similarly there is a quadratic integral method [20] characterized by a scaling parameter  $a_{\text{KRM}}$ .

Our long experience in the research of disordered materials documents that the better was the experiment and the better has been the application of scattering factors, the smaller was the difference (only several percent) between the scaling coefficients  $a_{\text{HGW}}$ ,  $a_{\text{HSV}}$  and  $a_{\text{KRM}}$  and simultaneously the smaller were the parasitic fluctuations on the RDF. In the present work we have used all three scaling methods and have kept the difference between scaling factors in the limit of 4 percent.

## Appendix C: Quantitative Relations between Objects, Clusters and Particles Estimated on the Basis of the Cluster Model

### C1. Estimates from Object Distances

In Subsection 3.1, we have defined that the nearest distance between Objects (big clusters) is  $\sim 108$  [m], see **Table 1**. In this moment we suppose a relatively simple organization of Objects, *i.e.* a “cubic body-centred” arrangement, in which an Object in the centre has 8 nearest neighbour Objects distant  $b_o = 108$  [m], where  $b_o$  is the half of the body diagonal in a cube with a side

$$a_o = (2b_o)/\sqrt{3} = (2 \times 108 \text{ [m]})/1.732 \approx 125 \text{ [m]}. \quad (\text{C1})$$

The volume  $V_o$  of this cube is therefore

$$V_o = 1.953 \times 10^6 \text{ [m}^3\text{]}. \quad (\text{C2})$$

Using now our result on the density of the matter, see **Table 2**,

$$D = 9 \times 10^{-23} \text{ [kg} \cdot \text{m}^{-3}\text{]} = m_{2o}/V_o \quad (\text{C3})$$

we are able to calculate in this model the mass  $m_{2o}$  of

Objects embedded in a cube with the volume  $V_o$ .

$$\begin{aligned} m_{2o} &= D \times V_o \\ &= 9 \times 10^{-23} \text{ [kg} \cdot \text{m}^{-3}\text{]} \times 1.953 \times 10^6 \text{ [m}^3\text{]} \\ &= 17.58 \times 10^{-17} \text{ [kg]}. \end{aligned} \quad (\text{C4})$$

At the same time, however, we have to take in account that, as a matter of fact, there are two Objects in the space of the cube (in each cube corner there is only 1/8 of the second Object). Hence the *mass  $m_o$  embedded in one Object* is

$$m_o = 8.79 \times 10^{-17} \text{ [kg]}. \quad (\text{C5})$$

### 1) The mass is formed by a 1:1:1 mixture of protons, helium nuclei and electrons

We may suppose now that the universe (in the time when the microwave background radiation began propagating) consisted of baryons (protons, helium nuclei, etc) and electrons, neutrinos, photons and dark matter particles. Supposing now that we have a mixture consisting of protons, helium nuclei and electrons in a relation 1:1:1, then the *medium mass of a “particle”*  $m_{\text{part}}^{1:1:1}$  in this mixture is

$$\begin{aligned} m_{\text{part}}^{1:1:1} &= \left( (1.67 \times 10^{-27} \text{ [kg]}) + (6.64 \times 10^{-27} \text{ [kg]}) \right. \\ &\quad \left. + (0.00091 \times 10^{-27} \text{ [kg]}) \right) / 3, \end{aligned}$$

*i.e.*

$$m_{\text{part}}^{1:1:1} = (8.311/3) \times 10^{-27} \text{ [kg]} = 2.77 \times 10^{-27} \text{ [kg]} \quad (\text{C6})$$

and the *number of particles*  $N_{\text{part}O}^{1:1:1}$  in one Object is in this case

$$\begin{aligned} N_{\text{part}O}^{1:1:1} &= m_o / m_{\text{part}}^{1:1:1} \\ &= (8.79 \times 10^{-17} \text{ [kg]}) / (2.77 \times 10^{-27} \text{ [kg]}), \end{aligned}$$

*i.e.*

$$N_{\text{part}O}^{1:1:1} = 3.17 \times 10^{10} \text{ particles}. \quad (\text{C7})$$

### 2) The mass is formed by a 1:1:10 mixture of protons, helium nuclei and electrons

Supposing now a mixture consisting of protons, helium nuclei and electrons in a relation 1:1:10, then the *medium mass of a “particle”*  $m_{\text{part}O}^{1:1:10}$  in this system is

$$\begin{aligned} m_{\text{part}O}^{1:1:10} &= \left( (1.67 \times 10^{-27} \text{ [kg]}) + (6.64 \times 10^{-27} \text{ [kg]}) \right. \\ &\quad \left. + 10 \times (0.00091 \times 10^{-27} \text{ [kg]}) \right) / 12, \end{aligned}$$

*i.e.*

$$m_{\text{part}O}^{1:1:10} = (8.319/12) \times 10^{-27} \text{ [kg]} = 0.69 \times 10^{-27} \text{ [kg]}. \quad (\text{C8})$$

and the *number of particles*  $N_{\text{part}O}^{1:1:10}$  in one Object is then



$$N_{\text{part}O}^{1:1:10} = m_O / m_{\text{part}}^{1:1:10} \\ = (8.79 \times 10^{-17} \text{ [kg]}) / (0.69 \times 10^{-27} \text{ [kg]}),$$

*i.e.*

$$N_{\text{part}O}^{1:1:10} = 12.74 \times 10^{10} \text{ particles.} \quad (\text{C9})$$

This section may be summarized by the statement that there are

$$N_{\text{part}O} \approx 10^{11} \text{ particles in one Object} \quad (\text{C10})$$

## C2. Estimates from Cluster Distances

According our calculations the distance between Clusters is  $\sim 12 \text{ [cm]} = 1.2 \times 10^{-1} \text{ [m]}$ , see **Table 3** and **Figure 17**. Similarly as in the previous case we suppose again a relatively simple organization of Clusters, *i.e.* a cubic body-centred arrangement in which a Cluster in the centre has 8 “nearest neighbour” Clusters distant  $b_C = 1.2 \times 10^{-1} \text{ [m]}$ , where  $b_C$  is the half of the body diagonal in a cube with a side

$$a_C = (2b_C) / \sqrt{3} = (2.4 \times 10^{-1} \text{ [m]}) / 1.732 \\ = 1.386 \times 10^{-1} \text{ [m]}. \quad (\text{C11})$$

The volume  $V_C$  of this cube is therefore

$$V_C = (1.386)^3 \times (10^{-1})^3 \text{ [m}^3\text{]} = 2.66 \times 10^{-3} \text{ [m}^3\text{]}. \quad (\text{C12})$$

Using now our result on the density of the matter, see already Equation (C3)

$$D = 9 \times 10^{-23} \text{ [kg} \cdot \text{m}^{-3}\text{]} = m_{2C} / V_C$$

we are able to calculate for this model the mass  $m_{2C}$  of Clusters embedded in a cube having the volume  $V_C$ .

$$m_{2C} = D \times V_C \\ = 9 \times 10^{-23} \text{ [kg} \cdot \text{m}^{-3}\text{]} \times 2.66 \times 10^{-3} \text{ [m}^3\text{]} \\ = 23.94 \times 10^{-26} \text{ [kg]}. \quad (\text{C13})$$

Here again we have to take in account that there are two Clusters in the space of the cube (in each corner there is only 1/8 of the second Cluster). Hence the *mass embedded in one Cluster* is

$$m_C = 1.20 \times 10^{-25} \text{ [kg]}. \quad (\text{C14})$$

### 1) The mass is formed by a 1:1:1 mixture of protons, helium nuclei and electrons

Similarly as in the preceding Appendix C1 we suppose again a mixture of protons, helium nuclei and electrons in a relation 1:1:1, respectively. The medium mass of a

“particle”  $m_{\text{part}}^{1:1:1}$  in this mixture is (see Equation (C6)).

$$m_{\text{part}}^{1:1:1} = 2.77 \times 10^{-27} \text{ [kg]}$$

and the *number of particles*  $N_{\text{part}C}^{1:1:1}$  in one Cluster is then

$$N_{\text{part}C}^{1:1:1} = m_C / m_{\text{part}}^{1:1:1} \\ = (1.20 \times 10^{-25} \text{ [kg]}) / (2.77 \times 10^{-27} \text{ [kg]}),$$

*i.e.*

$$N_{\text{part}C}^{1:1:1} = 0.43 \times 10^2 \text{ particles.} \quad (\text{C15})$$

### 2) The mass is formed by a 1:1:10 mixture of protons, helium nuclei and electrons

Identically as in the preceding Appendix C1 the medium mass of a “particle” is in this case, see equation (C8),

$$m_{\text{part}}^{1:1:10} = 0.69 \times 10^{-27} \text{ [kg]}$$

and the *number of particles*  $N_{\text{part}C}^{1:1:10}$  in one Cluster is then

$$N_{\text{part}C}^{1:1:10} = m_C / m_{\text{part}}^{1:1:10} \\ = (1.20 \times 10^{-25} \text{ [kg]}) / (0.69 \times 10^{-27} \text{ [kg]}),$$

*i.e.*

$$N_{\text{part}C}^{1:1:10} = 1.74 \times 10^2 \text{ particles.} \quad (\text{C16})$$

This section can be summarized by the statement that there are

$$N_{\text{part}C} \approx 10^2 \text{ particles in one Cluster.} \quad (\text{C17})$$

## C3. Consequences of Previous Calculations

We are now able to calculate easily the number of Clusters in one Object. Because there are  $N_{\text{part}O} \approx 10^{11}$  particles in one Object (Equation (C10)) and there are  $N_{\text{part}C} \approx 10^2$  particles in one Cluster, it follows that an Object should be composed from  $N_C$  Clusters, where

$$N_C = (N_{\text{part}O} / N_{\text{part}C}) \approx 10^{11} / 10^2 \approx 10^9 \text{ Clusters.} \quad (\text{C18})$$

Supposing that densities in the Object and in the Cluster are equal then this value is independent on the value of the density and on the mass of the particle (e.g.  $m_{\text{part}}^{1:1:1}$ ) and depends only on the relation of the volumes  $V_O / V_C$ , because

$$N_C = (N_{\text{part}O} / N_{\text{part}C}) = V_O / V_C \\ = 1.953 \times 10^6 \text{ [m}^{-3}\text{]} / 2.66 \times 10^{-3} \text{ [m}^{-3}\text{]} \\ \approx 10^9 \text{ Clusters.} \quad (\text{C19})$$