

Content, Density, Illuviation Mode and Depth of CaCO₃ in Soils of Semiarid-Arid Qilian Mountains—An Altitude Sequence Study of the Hulugou Watershed

Ka Lin^{1,2}, Decheng Li^{1*}, Ganlin Zhang¹, Yuguo Zhao¹, Jinling Yang¹, Feng Liu¹, Xiaodong Song¹

¹State Key Laboratory of Soil and Sustainable Agriculture, Institute of Soil Science, Chinese Academy of Sciences, Nanjing, China

²University of the Chinese Academy of Sciences, Beijing, China

Email: klin@issas.ac.cn, *dcli@issas.ac.cn

How to cite this paper: Lin, K., Li, D.C., Zhang, G.L., Zhao, Y.G., Yang, J.L., Liu, F. and Song, X.D. (2017) Content, Density, Illuviation Mode and Depth of CaCO₃ in Soils of Semiarid-Arid Qilian Mountains—An Altitude Sequence Study of the Hulugou Watershed. *Agricultural Sciences*, 8, 479-491.

<https://doi.org/10.4236/as.2017.86036>

Received: May 12, 2017

Accepted: June 23, 2017

Published: June 26, 2017

Copyright © 2017 by authors and Scientific Research Publishing Inc. This work is licensed under the Creative Commons Attribution International License (CC BY 4.0).

<http://creativecommons.org/licenses/by/4.0/>



Open Access

Abstract

The parental material of soils in the Qilian Mountains of northwest China is mainly aeolian loess containing CaCO₃ which may remain in soils under the semiarid-arid climate. To disclose the CaCO₃ characteristics change with the altitude and the terrain attributes, we surveyed 18 soil profiles in an altitude sequence from 3076 m to 4510 m in the Hulugou Watershed in the Qilian Mountains, measured CaCO₃ contents of all genetic horizon samples, analyzed the densities, illuviation modes and depths of CaCO₃ in the profiles, extracted values of the terrain attributes of the profiles including altitude slope, aspect, plane curvature, profile curvature and terrain wetness index (TWI) from the 90 m resolution SRTM3 DEM data on ArcGIS 9.3 platform. We found that CaCO₃ weighted content of the profiles ranged from 1.30 g·kg⁻¹ to 93.09 g·kg⁻¹, CaCO₃ density from 0.05 kg/m² to 75.69 kg/m², CaCO₃ illuviation depth from 12 cm to 54 cm. CaCO₃ illuviation modes could be divided into three types, *i.e.*, no illuviation mode in which the profile has only A horizon or CaCO₃ content < 5 g·kg⁻¹, middle illuviation mode in which CaCO₃ accumulated in a middle horizon, and down illuviation mode in which CaCO₃ content increases with the depth. CaCO₃ weighted content, density and illuviation depth had significant correlation with certain terrain attributes. In general, the altitude sequence is an effective way to study CaCO₃ characteristics in the alpine region, and the data of terrain attributes which can influence the precipitation and its redistribution in soil are potential in predicting soil CaCO₃ characteristics in the alpine region.

Keywords

CaCO₃, Altitude Sequence, Terrain Attributes, The Hulugou Watershed, The

Qilian Mountains

1. Introduction

The Qilian Mountains is located in the northeast fringe of Tibetan Plateau of northwest China. It is the important source of water for the famous Hexi Green Corridor, one of the most important agricultural regions in northwest China. The Qilian Mountains belong to the semiarid-arid region with the annual mean precipitation less than 400 mm and evaporation higher than 800 mm, the parental materials of soils usually contain aeolian loess with high CaCO₃ content [1] which may be not leached out completely from soils under the semiarid-arid climate. CaCO₃ quantity and illuviation in soil are generally dominated by precipitation [2]-[8] and are also influenced by other factors, such as topography, land use type, soil organisms and microbes [9] [10] [11] [12] [13]. Thus, understanding CaCO₃ can disclose the characteristics of regional climate, landscapes, soil genesis and evolution as well as soil other properties [6] [14]-[23].

The altitude sequence is often used in soil studies in the hilly and mountainous regions [24] [25] [26], and is potential to study soil CaCO₃ characteristics in the Qilian Mountains whose elevation spans from 2800 m to 5808 m and shows obvious vertical differences in climatic condition and landscape [27] [28]. So far, a lot of soil information in altitude sequence is available in the Qilian Mountains, for example, soil organic matter, total nitrogen, water retention and microbe [1] [29] [30] [31] [32], but little reference is found on soil CaCO₃ there. Therefore, this paper mainly aims at: 1) select a typical watershed in the Qilian Mountains; 2) survey and sample typical soil profiles in an altitude sequence; 3) disclose CaCO₃ content, density, illuviation mode and depth of CaCO₃, and their relation with the terrain attributes.

2. Methods and Materials

2.1. Study Area

The Hulugou Watershed (38°12'N - 38°17'N, 99°50'E - 99°54'E) is regarded as the most typical watershed in the arid and semi-arid Qilian Mountains [33] [34], it is located at the Qilian Alpine Ecology and Hydrology Research Station of the Cold and Arid Regions Environmental and Engineering Research Institute (CAS), occupies 23.1 km² in area, spans from 2960 m to 4820 m in altitude, and belongs to alpine periglacial landform influenced by the continental alpine climate with the annual temperature from -18.4°C to 19.0°C with a mean of 0.2°C and annual precipitation from 300 mm to 400 mm. The aeolian silty loess is the dominant parental materials of soils, mixed with various glacial debris. Vegetation is mainly alpine shrubs and grasses. The dominant herb species of the profiles are *Carex melantha*, *Kobresia capillifolia* and *Polygonum viviparum*. Soils are relative young and mostly poorly developed, Entisols, Inceptisols and Mollicsols are the dominant soil orders [35], Gelisols only appear above 3600 m and

Histosols are sporadically distributed in depressions [1].

2.2. Typical Profile, Survey and Sampling, Analytical Methods

The watershed DEM map (Figure 1) was formed by using the 90 m resolution SRTM3 DEM data, assisted with the information of the parental material, vegetation, terrain and foot accessibility. Eighteen typical profiles of alpine grassland with the same parental material were selected in an altitude sequence (red points in Figure 1).

Sampling was conducted from June to July in 2013. The longitude and latitude of each profile was obtained by portable GPS (Mode: Garmin GPS map 629sc). Each profile was dug to the appearance of parental rocks. Profile thickness and gravel (>2 mm in diameter) volumetric percentage (%) were estimated visually in the field. Soil samples of all genetic horizons were collected and ground to pass 0.149 mm diameter sieve for measuring CaCO_3 content by the calcimeter method. The cutting ring samples of 17 horizons with no or little gravels or grass roots were collected to measure bulk density by the oven drying method [36], bulk densities of other 37 horizons without cutting ring due to dense gravels or roots were inferred from the correlation between bulk density (y) and organic matter content (x) of 50 genetic horizon samples sampled within and near the watershed ($y = 1.4503e^{-0.01x}$, $R^2 = 0.847$, $p < 0.01$, $n = 50$).

The weighted mean content of CaCO_3 (X) of each profile was calculated as:

$$X = \sum \frac{H_i \times X_i}{H} \quad (1)$$

where H_i is the thickness of i horizon, X_i is the measured CaCO_3 content ($\text{g}\cdot\text{kg}^{-1}$)

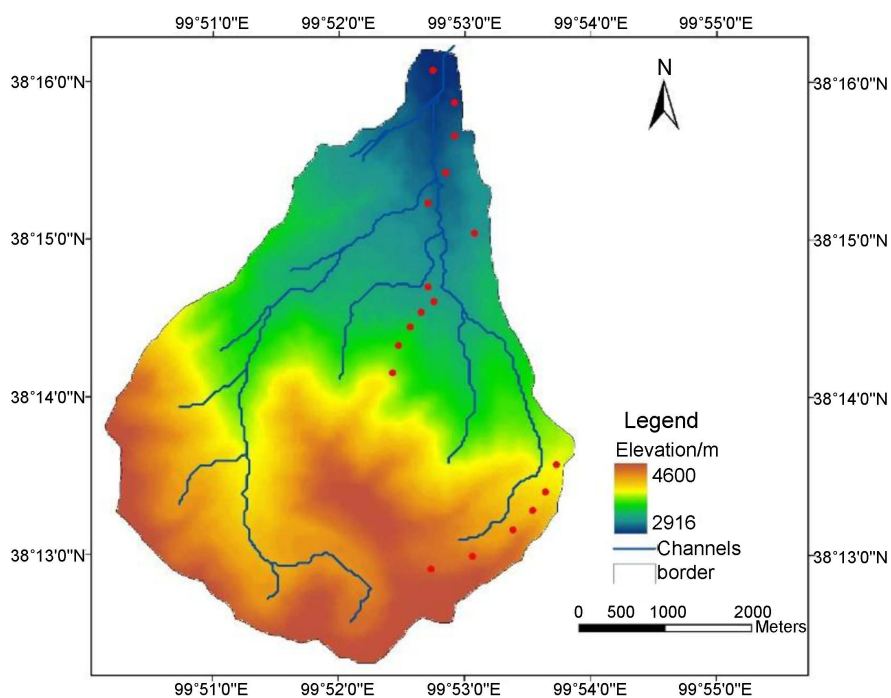


Figure 1. DEM and typical profile sites of the Hulugou Watershed in the Qilian Mountains.

of i horizon, H is the profile thickness.

CaCO_3 density (CaCO_{3D}) of each profile was calculated as:

$$\text{CaCO}_{3D} = \sum_{i=1}^k \left[\frac{X_i \times B_i \times H_i \times (1 - G_i)}{100} \right] \quad (2)$$

where B_i is the bulk density of i horizon, G_i is the volumetric percentage of gravels (>2 mm in diameter), k is the horizon number of a profile.

2.3. Data of Terrain Attributes

According to the information the longitude and latitude of each profile, the values of the terrain attributes including the altitude, slope, aspect, plane curvature, profile curvature and terrain wetness index (TWI) were obtained from the 90 m resolution SRTM3 DEM data on ArcGIS 9.3 platform (Table 1).

2.4. Statistical Analysis

IBM SPSS Statistics 20 was used to test for curve estimation. Origin Lab 8.0 was used to depicted the illuviation mode of CaCO_3 .

3. Results and Discussion

3.1. Terrain Attributes

Results of Curve Estimation between terrain attributes showed that a significant quadratic correlation existed between slope (y), TWI and altitude (x)

Table 1. Information of terrain attributes of the profiles in the Hulugou Watershed.

| Profile | Altitude (m) | Gradient (°) | Aspect (°) | Plane curvature | Profile curvature | TWI |
|---------|--------------|--------------|------------|-----------------|-------------------|--------|
| P1 | 4510 | 18 | 64 | -0.1785 | -0.0427 | 4.7581 |
| P2 | 4424 | 15 | 105 | 0.0446 | -0.0295 | 5.4725 |
| P3 | 4310 | 17 | 89 | -0.1101 | -0.0114 | 5.4775 |
| P4 | 4257 | 15 | 69 | 0.1314 | -0.0044 | 5.6348 |
| P5 | 4129 | 20 | 44 | -0.2736 | 0.1214 | 5.4450 |
| P6 | 4064 | 20 | 14 | -0.0445 | 0.0913 | 5.2302 |
| P7 | 3699 | 30 | 47 | 0.3084 | 0.0738 | 3.5356 |
| P8 | 3510 | 31 | 13 | 0.1754 | -0.0715 | 3.8893 |
| P9 | 3364 | 18 | 17 | -0.0613 | 0.2226 | 4.2333 |
| P10 | 3359 | 18 | 13 | 0.0214 | 0.0707 | 4.3501 |
| P11 | 3352 | 17 | 6 | -0.0983 | 0.1733 | 4.3935 |
| P12 | 3345 | 11 | 31 | -0.0553 | 0.0558 | 4.4346 |
| P13 | 3260 | 17 | 304 | 0.0225 | 0.1830 | 5.1328 |
| P14 | 3187 | 9 | 15 | 0.0406 | 0.0036 | 6.3796 |
| P15 | 3152 | 8 | 315 | -0.071 | 0.0031 | 6.5090 |
| P16 | 3076 | 17 | 6 | 0.3555 | -0.0272 | 4.4001 |
| P17 | 3064 | 16 | 327 | 0.1247 | 0.0383 | 5.7977 |
| P18 | 3008 | 8 | 53 | -0.0452 | -0.0328 | 6.8721 |

($y_1 = -289.130 + 0.163x - 2.134 \times 10^5 x^2$, $R^2 = 0.429$, $p < 0.05$;
 $y_1 = 852.903 - 0.476x + 6.821 \times 10^{-5} x^2$, $R^2 = 0.564$, $p < 0.01$;
 $TWI = 49.422 - 0.024x + 3.176 \times 10^{-6} x^2$, $R^2 = 0.355$, $p < 0.05$), significant exponential correlation between slope and TWI ($y = 81.588e^{-0.320TWI}$, $R^2 = 0.623$, $p < 0.01$). The above results indicated the complex and irregular spatial distribution pattern of terrain attributes in the Hulugou Watershed.

3.2. Profile Thickness (PT), Grave Volumetric Percentage GV(%) and Bulk Density (BD)

PT, GV(%) and BD are the three parameters in calculating CaCO₃ density. **Table 2** showed the statistical information of the three parameters of the 18 profiles. PT ranged from 10 cm to 135 cm with a mean of 62 cm, GV(%) ranged from 5% to 95% with a mean of 40%, and BD ranged from 0.30 g/cm³ to 1.73 g/cm³ with a mean of 1.02 g/cm³.

Results of Curve Estimation between PT, GV(%), BD and terrain attributes were presented in **Table 3**, which indicated that altitude, gradient and aspect can be used to predict the PT, GV(%) and BD, while altitude had a higher prediction efficiency in comparison with gradient and aspect. The significant correlation with altitude can mainly be due to the geological erosion process caused by water, gravity and wind. All the 18 profiles actually are located on the hillsides with

Table 2. Statistic information of PT, GV(%) and BD of the profiles in the Hulugou Watershed.

| Profile | Horizon number | Profile thickness (cm) | Gravel percentage (V%) | | Bulk density (g/cm ³) | |
|---------|----------------|------------------------|------------------------|---------------|-----------------------------------|---------------|
| | | | Range | Weighted mean | Range | Weighted mean |
| P1 | 1 | 10 | 95 | 95 | 1.43 | 1.43 |
| P2 | 1 | 15 | 95 | 95 | 1.40 | 1.40 |
| P3 | 1 | 15 | 95 | 95 | 1.40 | 1.40 |
| P4 | 1 | 18 | 95 | 95 | 1.42 | 1.42 |
| P5 | 1 | 19 | 95 | 95 | 1.40 | 1.40 |
| P6 | 1 | 20 | 95 | 95 | 1.41 | 1.41 |
| P7 | 1 | 20 | 90 | 90 | 1.13 | 1.13 |
| P8 | 3 | 40 | 15 - 90 | 56 | 0.39 - 1.37 | 1.02 |
| P9 | 6 | 120 | 35 - 65 | 54 | 0.69 - 1.37 | 1.21 |
| P10 | 3 | 60 | 10 - 85 | 52 | 0.30 - 1.18 | 0.89 |
| P11 | 3 | 40 | 10 - 95 | 70 | 0.73 - 1.07 | 0.80 |
| P12 | 6 | 120 | 5 - 85 | 77 | 0.30 - 1.18 | 0.94 |
| P13 | 4 | 100 | 5 - 55 | 7 | 0.83 - 1.38 | 0.95 |
| P14 | 4 | 110 | 5 - 10 | 20 | 0.59 - 1.16 | 1.00 |
| P15 | 4 | 60 | 5 - 40 | 47 | 0.45 - 1.34 | 1.04 |
| P16 | 4 | 110 | 5 - 90 | 21 | 0.55 - 1.29 | 1.13 |
| P17 | 6 | 135 | 5 - 15 | 10 | 0.65 - 1.73 | 1.22 |
| P18 | 4 | 130 | 5 - 80 | 40 | 0.74 - 1.36 | 1.12 |

slope ranged from 8° to 31° (Table 1), thus, erosion is inevitable even with dense grass coverage, besides, comparatively soil particles are easier to be eroded and move fast from the high place to low place than the gravels.

3.3. Illuviation Mode and Depth of CaCO₃ in Profiles

The illuviation depth of CaCO₃ in the profiles were ranged from 12 cm to 54 cm in the profiles (20 cm, 12 cm, 15 cm, 38 cm, 40 cm, 28 cm, 54 cm and 35 cm for P8, P9, P11, P13, P15, P16, P17 and P18, respectively, Figure 2(a) and Figure 2(b)). These 18 profiles can be categorized into three kinds of illuviation modes of CaCO₃ according to CaCO₃ contents of different horizons (Figure 2): 1) No illuviation mode, for examples of the profiles above 3600 m in altitude only had one horizon (P1 to P7) or profiles where CaCO₃ leached out intensively from the soil (<lower than 5 g·kg⁻¹ in CaCO₃ content, P10, P12 and P14); 2) Middle illuviation (Figure 2(a)), CaCO₃ leached down but accumulated in a certain middle horizon, which were 12 cm - 31 cm, 38 cm - 74 cm and 54 cm - 76 cm in P9, P13 and P17, respectively. CaCO₃ content in the accumulated horizon were about 7.0, 1.9 and 2.9 times as much as the mean contents of up and down horizons for P9, P13 and P17, respectively); 3) Down illuviation mode (Figure 2(b)), CaCO₃

Table 3. Correlation between PT, GV(%), BD and terrain attributes in profiles of the Hulugou Watershed.

| Curve model | Variable | R ² | p |
|--|--------------|----------------|-------|
| $PT = e^{(2.522+22448.423/x)}$ | x: altitude | 0.875 | <0.01 |
| $PT = 231.358 - 60.724 \ln(x)$ | x: gradient | 0.235 | <0.05 |
| $PT = 87.925e^{-0.017x}$ | x: aspect | 0.284 | <0.05 |
| $GV(\%) = -294.188 + 0.415x - 4.828 \times 10^{-5} x^2$ | x: altitude, | 0.788 | <0.01 |
| $GV(\%) = 45.476 + 0.799x - 0.03x^2$ | x: aspect | 0.558 | <0.05 |
| $BD = 4.748 - 0.02x + 3.421 \times 10^{-7} x^2$ | x: altitude | 0.686 | <0.01 |
| $BD = 1.031 + 8.110 \times 10^{-5} x^2 - 4.707 \times 10^{-7} x^3$ | x: aspect | 0.342 | <0.05 |

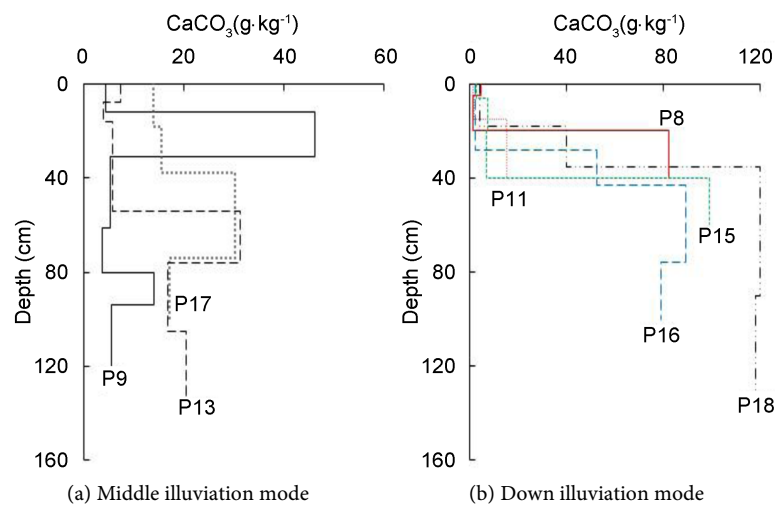


Figure 2. Illuviation mode of CaCO₃ in the profiles in the Hulugou Watershed.

content increased with the increase of profile depth (P8, P11, P15, P16 and P18), the initial depth of illuviation was 20 cm, 15 cm, 40 cm, 28 cm and 18 cm for P8, P11, P15, P16 and P18, respectively, CaCO₃ content was about 9 - 29.5 times as much as the up horizons.

For the three kinds of illuviation modes of CaCO₃, the results of one-way ANOVA LSD tests (Table 4) showed that a significant difference existed only in profile curvature between no illuviation mode and down illuviation mode of CaCO₃ ($p < 0.05$), which indicated that it was difficult to predict the illuviation mode of CaCO₃ by terrain attributes in the Hulugou Watershed.

Results of Curve Estimation between the illuviation depth and terrain attributes were presented in Table 5, which indicated that altitude and TWI can be used to predicate the illuviation depth of CaCO₃ in the profiles in this area, while TWI is better than altitude and aspect in the accuracy of prediction.

CaCO₃ illuviation depth significantly correlated with altitude and TWI, which can be attributed to the significant correlation between altitude with precipitation and TWI. Three models are available to contact CaCO₃ illuviation depth (D , cm) with precipitation (P , mm), *i.e.*, Retallack model [5]: $p = 137.240 + 6.450D + 0.013D^2$ ($R = 0.52$, $n = 807$), Zhao model [4]: $p = 3.057D + 168.5$ ($R = 0.96$, $n = 15$), and Pan and Huang model [8]: $p = 68.4990 + 12.063D - 0.0693D^2$ ($R = 0.725$, $n = 48$). Because no measured precipitation data is available for the 18 profiles, we used the rough information of the lowest and highest precipitation (300 mm and 400 mm) in the Hulugou Watershed to calculate the theoretical CaCO₃ illuviation depth, which was 24 cm - 37 cm, 43 cm - 76 cm, and 22 cm - 34 cm for Retallack model, Zhao model and Pan and Huang model, respectively. Compared with real 12 cm - 54 cm of CaCO₃ illuviation depth of the our profiles, the Retallack model and Pan and Huang model can be regarded more feasible than the Zhao Model which overestimated CaCO₃ illuviation depth. We

Table 4. Differences in terrain attributes between different illuviation modes.

| CaCO ₃ illuviation mode | | Altitude (m) | Gradient (°) | Aspect (°) | Plane curvature | Profile curvature | TWI |
|------------------------------------|------|--------------|--------------|------------|-----------------|-------------------|---------|
| No illuviation. | Mean | 3324A | 17A | 17A | -0.0181A | -0.0181A | 0.1423A |
| | Std. | 45 | 0 | 139 | 0.0567 | 0.0508 | 0.3592 |
| Middle illuviation. | Mean | 3168A | 17A | 117A | 0.1396A | 0.0779AB | 4.8104A |
| | Std. | 139 | 1 | 149 | 0.1705 | 0.1058 | 0.7015 |
| Down illuviation. | Mean | 3240A | 13A | 85A | 0.0089A | -0.0084B | 5.6169A |
| | Std. | 172 | 9 | 116 | 0.0918 | 0.0424 | 1.2112 |

*No illuviation: P10, P12 and P14; Middle illuviation: P9, P13 and P17; Down illuviation: P8, P11, P15, P16 and P18; Std.: standard deviation, A, AB and B stands for different significance.

Table 5. Correlation between illuviation depth of CaCO₃ with terrain attributes of the Hulugou Watershed.

| Curve model | Variable | R ² | p |
|---|---|----------------|-------|
| $y = 3.680 \times 10^{25} x_1^{-6.880}$ | y: CaCO ₃ illuviation depth, x: altitude | 0.514 | <0.05 |
| $y = -178.383 + 56.479TWI - 0.534TWI^3$ | | 0.746 | <0.05 |

attributed it to the least or insufficient number of soil profiles used in Zhao model.

Zhao [4] pointed out when two, three layers or unusually thick CaCO_3 illuvial horizon exists under the same paleosol or weathering profile, it indicates that there are two or more soil-forming periods and corresponding climate change at that time, but so far, there is no information or model of terrain attributes available on the CaCO_3 illuviation mode in soil profile. Our study also found it is hard to indicate CaCO_3 illuviation mode by the terrain attributes in the irregular and complex alpine region.

3.4. Weighted Content and Density of CaCO_3

For 18 profiles, CaCO_3 mainly exists in the form of mottles and powders in the profiles. No pseudomycelium or concretion was found, which means it is hard for CaCO_3 to crystallize under the semiarid-arid climate of the Qilian Mountains. **Table 6** showed that CaCO_3 weighted content of the profiles ranged from $1.30 \text{ g}\cdot\text{kg}^{-1}$ to $93.09 \text{ g}\cdot\text{kg}^{-1}$ with mean of $23.53 \text{ g}\cdot\text{kg}^{-1}$ and standard deviation of $24.19 \text{ g}\cdot\text{kg}^{-1}$, while CaCO_3 density ranged from $0.05 \text{ kg}/\text{m}^2$ to $75.69 \text{ kg}/\text{m}^2$ with a mean of $9.79 \text{ kg}/\text{m}^2$ and standard deviation of $18.05 \text{ kg}/\text{m}^2$. Results of Curve Estimation between the weighted content and density of CaCO_3 with terrain attributes were presented in **Table 7**, which revealed that slope, plane curvature, profile curvature and TWI can be used to predicate weighted content of CaCO_3 in these profiles. Besides, altitude, aspect, gradient and TWI can be used to predicate the

Table 6. CaCO_3 weighted content and density of profiles in the Hulugou Watershed.

| Profile | Horizon number | Weight content of CaCO_3 ($\text{g}\cdot\text{kg}^{-1}$) | Density of CaCO_3 (kg/m^2) |
|---------|----------------|---|---|
| P1 | 1 | 6.97 | 0.05 |
| P2 | 1 | 4.51 | 0.05 |
| P3 | 1 | 13.53 | 0.14 |
| P4 | 1 | 31.57 | 0.4 |
| P5 | 1 | 10.25 | 0.27 |
| P6 | 1 | 54.94 | 1.55 |
| P7 | 1 | 2.05 | 0.05 |
| P8 | 3 | 42.25 | 2.44 |
| P9 | 6 | 12.54 | 7.72 |
| P10 | 3 | 4.03 | 1.83 |
| P11 | 3 | 4.28 | 0.49 |
| P12 | 6 | 10.54 | 0.31 |
| P13 | 4 | 1.30 | 1.28 |
| P14 | 4 | 37.5 | 18.02 |
| P15 | 4 | 57.06 | 22.31 |
| P16 | 4 | 21.00 | 19.09 |
| P17 | 6 | 16.16 | 24.49 |
| P18 | 4 | 93.09 | 75.69 |

Table 7. Correlation between CaCO₃ weighted content, density and terrain attributes in the Hulugou watershed.

| Parameter | Curve model | Variable | R ² | p |
|---|---|----------------------|----------------|-------|
| CaCO ₃ weighted content (y ₁) | $y_1 = 360.169 - 57.602x + 3.007x^2 - 0.048x^3$ | x: slope | 0.563 | <0.01 |
| | $y_1 = e^{(2.647-0.030/x)}$ | x: plane curvature | 0.235 | <0.05 |
| | $y_1 = 17.898 \times 0.001^x$ | x: profile curvature | 0.236 | <0.05 |
| CaCO ₃ density (y ₂) | $y_1 = 93.871 - 11.454 \text{ TWI}^2 + 1.630 \text{ TWI}^3$ | | 0.631 | <0.01 |
| | $y_2 = e^{(-14.119+51216.690/x)}$ | x: altitude | 0.686 | <0.01 |
| | $y_2 = -21.160 + 458.338/x$ | x: gradient | 0.460 | <0.01 |
| | $y_2 = e^{-0.042x}$ | x: aspect | 0.265 | <0.05 |
| | $y^2 = 79.049 - 10.494 \text{ TWI}^2 + 1.460 \text{ TWI}^3$ | | 0.734 | <0.01 |

CaCO₃ density. Obviously, TWI had the highest prediction efficiency in comparison with other terrain attributes.

CaCO₃ weighted content had significant negative correlation with profile curvature, it is because the higher of profile curvature, the higher of the change rate of gradient, which may cause more CaCO₃ to be moved away from soil through water.

CaCO₃ density had significant negative correlation with gradient, usually the increase of gradient accelerates the movement of moisture, which promotes the eluviation of CaCO₃. In general, precipitation is higher in the shady slope than the sunny slope, so CaCO₃ density in shady slope should be lower than that of sunny slope. But our study showed a negative correlation between CaCO₃ and aspect, which means that the shady slope contains higher CaCO₃ than the sunny slope. To some extent it can be attributed to the significant negative correlation between the profile thickness and aspect. Significant nonlinear correlation existed between CaCO₃ density and altitude, which is not only attributed to PT, GV(%) and BD, but also to the changes of precipitation and TWI with altitude.

Liu *et al.* [37] showed that CaCO₃ density of 1 m depth profile ranged from 1.0 kg/m² to 137.6 kg/m² in the alpine grassland of Qinghai Province (the same province as the Hulugou Watershed). Zhang [10] showed CaCO₃ density in 1 m depth profiles in the Loess Plateau ranged from 8.3 kg/m² to 291.7 kg/m². CaCO₃ density in our profiles ranged from 0.05 kg/m² to 75.69 kg/m², which can be regarded within the above ranges.

CaCO₃ illuviation depth is related to altitude and TWI. CaCO₃ weighted content is related to slope, plane curvature, profile curvature and TWI, CaCO₃ density related to altitude, gradient, aspect and TWI, which indicated the data of the terrain attributes are feasible in predicting CaCO₃ content and density in the alpine region. But almost all these correlations are nonlinear and some even with low value of R². This can be attributed to the irregular and complex spatial distribution of terrain attributes. In general, the factors influencing CaCO₃ behaviors in soil is complex, beside precipitation, other factors include topography, parental materials, etc. [8] [38] [39] [40]. Usually precipitation increases with al-

titude increases, but Niu *et al.* [41] found that in the north slope of the Qilian Mountains (similar as the Hulugou watershed), the average annual rainfall increases about 17.41 mm from 1700 m to 3300 m in altitude; while decreases about 30.21 mm when the altitude increases 100 m from 3300 m to 3800 mm. It is due to the increase of the wind speed and the decrease of the temperature which cause the rainfall mainly in solid phase, thus, the precipitation actually reduces. Thus using only precipitation it is difficult to predict CaCO₃ characteristics in the alpine region because of the irregular and complex spatial distribution of terrain attributes.

Moreover, the CaCO₃ data of each profile in our study only represent a pedon in 90 m × 90 m pixel of SRTM3 DEM. Actually a 90 m × 90 m pixel usually contains many pedons with different terrain units, the extracted value of a terrain factor used for a profile actually is the mean value of the different pedons in the pixel, this is not the strict one-to-one correspondence and will weaken the accuracy of the study consequences, so DEM data with higher resolution should be found and used in further study.

4. Conclusion

The large span of altitude and loess parental material of soils in the arid and semi-arid-arid Qilian Mountain enable altitude sequence to be a potential way in studying CaCO₃ characteristics. Our study of 18 typical profiles in an altitude sequence in the Hulugou Watershed showed that CaCO₃ weighted content, density and illuviation depth had significant nonlinear correlations with the some terrain attributes, which on one hand indicated that the data of terrain attributes extracted from DEM are a potential to be used in predicating CaCO₃ characteristics in the alpine region because the terrain factor influences precipitation and its redistribution in soil, but on the other hand it meant that for the irregular and complex alpine region, further attention should focus on how to set up models based on precipitation combined with terrain attributes in order to predicate CaCO₃ characteristics with high accuracy.

Acknowledgements

This study was supported by projects of the National Natural Science Foundation of China (Grant No.s 41371224, 41130530, 913253002) and the National S&T Basic Special Foundation (Grant No. 2014FY110200). We would like to express thanks to the contribution from all the participants in field soil survey, laboratory work and data processing. We are also grateful to Prof. & Dr. Bruce Velde, Laboratoire de Géologie of Ecole Normal Supérieurey for his linguistic correction.

References

- [1] Yang, F., Zhang, G.L., Yang, J.L. Li, D.C., Zhao Y.G. and Liu F. (2014) Organic Matter Controls of Soil Water Retention in an Alpine Grassland and Its Significance for Hydrological Processes. *Journal of Hydrology*, **519**, 3086-3093. <https://doi.org/10.1016/j.jhydrol.2014.10.054>

- [2] Jenny, H. and Leonard, C.D. (1935) Functional Relationship between Soil Properties and Rainfall. *Soil Science*, **38**, 363-381.
http://journals.lww.com/soilsci/Citation/1934/11000/Functional_Relationships_Between_Soil_Properties.4.aspx
- [3] Marion, G.M., Schlesinger, W.H. and Fonteyn, P.J. (1985) CALDEP: A Regional Model for Soil CaCO₃ (Caliche) Illuviation in Southwestern Deserts. *Soil Science*, **139**, 468-481. <https://doi.org/10.1097/00010694-198505000-00014>
- [4] Zhao, J.B. (2000) A New Geological Theory about Eluvial Zone—Theory Illuvial on Depth of CaCO₃. *Acta Sedimentologica Sinica*, **18**, 29-35. (In Chinese)
<http://www.cnki.com.cn/Article/CJFDTOTAL-CJXB200001005.htm>
- [5] Retallack, G.J. (2005) Pedogenic Carbonate Proxies for Amount and Seasonality of Precipitation in Paleosols. *Geology*, **33**, 333-336.
<http://geology.gsapubs.org/content/33/4/333.short>
<https://doi.org/10.1130/G21263.1>
- [6] Zhu, H., Zhao, C.Y., Li, J., Li, Y.J. and Wang F. (2007) Indication of Soil CaCO₃ Sedimentation to Rainfall and Environmental Change. *Chinese Journal of Soil Science*, **28**, 810-812. (In Chinese)
<http://www.cnki.com.cn/Article/CJFDTOTAL-TRTB200704039.htm>
- [7] Qiao, J.J., Li, Q., Zhao, Y., Cheng, Z.F. and Yang, X. (2009) Study on the CaCO₃ Content Characteristics in Conterminous Region of Beijing, Tianjin and Hebei. *Geography and Geo-Information Science*, **25**, 56-59. (In Chinese)
- [8] Pan, Y.Y. and Huang, C.M. (2010) Quantitative Study on the Correlation between the Depth of Calcic Horizon in Soil and Annual Precipitation in China. *Journal of Anhui Agriculture Science*, **38**, 20043-20044, 20054. (In Chinese)
<http://www.cnki.com.cn/Article/CJFDTOTAL-AHNY201035065.htm>
- [9] Zhao, L.B. (2003) A Study on Soil CaCO₃ Illuviation and Soil CO₂ in Loess Hilly Area. Master Thesis, Shanxi University, Taiyuan, China. (In Chinese)
<http://cdmd.cnki.com.cn/Article/CDMD-10108-2003107497.htm>
- [10] Zhang, R. (2012) Spatial Distribution of Soil Inorganic Carbon Density, Stock and Its Affecting Factors in the Loess Plateau. Master Thesis, Graduate University of Chinese Academy of Sciences, Beijing, China. (In Chinese)
<http://cdmd.cnki.com.cn/Article/CDMD-80129-1012032170.htm>
- [11] Zhao, Q. (2014) Experimental Study on Soil Improvement Using Microbial Induced Calcite Precipitation. Doctor Thesis, China University of Geoscience, Beijing. (In Chinese)
- [12] Versteegh, E.A., Black, S. and Hodson, M.E. (2014) Environmental Controls on the Production of Calcium Carbonate by Earthworms. *Soil Biology and Biochemistry*, **70**, 159-161. <https://doi.org/10.1016/j.soilbio.2013.12.013>
- [13] Vahabi, A., Ramezaniapour, A.A., Sharafi, H., Zahiri, H.S., Vali, H. and Noghabi, K.A. (2015) Calcium Carbonate Precipitation by Strain *Bacillus licheniformis* AK01, Newly Isolated from Loamy Soil: A Promising Alternative for Sealing Cement-Based Materials. *Journal of Basic Microbiology*, **55**, 105-111.
<http://onlinelibrary.wiley.com/doi/10.1002/jobm.201300560/full>
<https://doi.org/10.1002/jobm.201300560>
- [14] Al-Ani, A.N. and Dudas, M.J. (1988) Influence of Calcium Carbonate on Mean Weight Diameter of Soil. *Soil and Tillage Research*, **11**, 19-26.
[https://doi.org/10.1016/0167-1987\(88\)90028-1](https://doi.org/10.1016/0167-1987(88)90028-1)
- [15] Xiong, Y. and Li, Q.K. (1990) Soils of China. 2nd Version, Science Press, Beijing, China. (In Chinese)
- [16] National Soil Survey Office (1993) Soils of China. China Agriculture Press, Beijing,

- China. (In Chinese)
- [17] Francis, R.E. and Aguilar, R. (1995) Calcium Carbonate Effects on Soil Textural Class in Semiarid-Arid Wildland Soils. *Arid Land Research and Management*, **9**, 155-165. <http://www.tandfonline.com/doi/abs/10.1080/15324989509385882>
- [18] Cooperative Research Group on Chinese Soil Taxonomy (CRGCST) (2001) Chinese Soil Taxonomy. Science Press, Beijing, China.
- [19] Feng, Q., Cheng, G.D. and Endo, K. (2001) Carbon Storage in Desertified Lands: A Case Study from North China. *GeoJournal*, **51**, 181-189. <https://link.springer.com/article/10.1023%2FA%3A1017557712431?LI=true>
- [20] Nin, Y.F., Liu, W.G. and An, Z.S. (2006) Changes and Significances in Palaeoenvironment of Carbonate and Carbon Isotope Difference ($\Delta\delta^{13}\text{C}$) of Organic Carbon in Xifeng Loess-Paleosol Profile of Gansu. *Chinese Science Bulletin*, **51**, 1828-1832. (In Chinese) <http://www.cnki.com.cn/Article/CJFDTOTAL-KXTB200615014.htm>
- [21] Singh, S.K., Sharma, B.K. and Singh, A.K. (2007) Carbon Stock and Organic Carbon Dynamics in Soils of Rajasthan, India. *Journal of Arid Environments*, **68**, 408-421. <https://doi.org/10.1016/j.jaridenv.2006.06.005>
- [22] Kaiser, M., Ghezzehei, T.A., Kleber, M., Myrold, D.D. and Berhe, A.A. (2014) Influence of Calcium Carbonate and Charcoal Applications on Organic Matter Storage in Silt-Sized Aggregates Formed during a Microcosm Experiment. *Soil Science Society of America Journal*, **78**, 1624-1631. <https://dl.sciencesocieties.org/publications/sssaj/abstracts/78/5/1624> <https://doi.org/10.2136/sssaj2014.04.0146>
- [23] Grealish, G., Fitzpatrick, R.W. and Asem, S.O. (2015) Assisting Non-Soil Experts to Identify Soil Types for Land Management to Support Restoration of Arid Rangeland Native Vegetation in Kuwait. *Arid Land Research and Management*, **29**, 288-305. <http://www.tandfonline.com/doi/abs/10.1080/15324982.2014.973620> <https://doi.org/10.1080/15324982.2014.973620>
- [24] Penížek, V. and Zadorova, T. (2012) Soil Toposequence under Man-Planted Vegetation in the Krkonoše Mts., Czech Republic. *Soil and Water Research*, **7**, 138-150. <http://agriculturejournals.cz/publicFiles/77373.pdf>
- [25] Li, Q., Li, Z., Liang, J., He, Y., Cao, J. and Hu, Q. (2014) $\delta^{13}\text{C}$ Characteristics of Soil Organic Carbon in Hilly Karst Area. *Polish Journal of Environmental Studies*, **23**, 2345-2349. <http://www.pjoes.com/pdf/23.6/Pol.J. Environ. Stud. Vol. 23. No. 6. 2345-2349.pdf>
- [26] Yuan, Y., Si, G., Li, W. and Zhang, G. (2015) Altitudinal Distribution of Ammonia-Oxidizing Archaea and Bacteria in Alpine Grassland Soils along the South-Facing Slope of Nyqentangula Mountains, Central Tibetan Plateau. *Geomicrobiology Journal*, **32**, 77-88. <http://www.tandfonline.com/doi/abs/10.1080/01490451.2014.925013> <https://doi.org/10.1080/01490451.2014.925013>
- [27] Han, C.T., Chen, R.S., Liu, J.F., Yang, Y. and Liu, Z.W. (2013) Hydrological Characteristics in Non-Freezing Period at the Alpine Desert Zone of Hulugou Watershed, Qilian Mountains. *Journal of Glaciology and Geocryology*, **35**, 1536-1544. (In Chinese)
- [28] Li, Z.J., Li, Z.X., Tian, Q., Song, L.L., Jia, B. and Guo, R. (2014) Environmental Significance of Wet Illuviation Composition in the Central Qilian Mountains, China. *Environmental Science*, **35**, 4465-4474. (In Chinese) <http://www.cnki.com.cn/Article/CJFDTOTAL-HJKZ201412007.htm>
- [29] Kang, W.L. (2013) Studies on Microbial Community Structure and Functional Groups in Alpine Steppe Soils of the Qilian Mountains. Master Thesis, Lanzhou Jiaotong University, Lanzhou, China. (In Chinese)

- [30] Mao, W.L. (2013) Variations in Soil Bacterial Community from Soil Samples along the Altitude Gradient at the Upper Reaches of the Heihe River, Northwestern China. Master Thesis, Gansu Agricultural University, Lanzhou, China. (In Chinese)
- [31] Che, Z.X., Liu, X.D., Che, Z.Q., Jing, M., Li, X.Y. and Wang, R.X. (2014) Spatial Distribution Characteristics of Soil Organic Matter and Nitrogen of *Picea crassifolia* in Qilian Mountains. *Journal of Soil and Water Conservation*, **28**, 164-169. (In Chinese) <http://www.cnki.com.cn/Article/CJFDTOTAL-TRQS201405029.htm>
- [32] Ma, A.A., Xu, S.J., Min, Y.X., Wang, P., Wang, Y.J. and Zhang, X.F. (2014) Phylogenetic and Physiological Diversity of Actinomycetes Isolated from Plant Rhizosphere Soils in the Qilian Mountains. *Acta Ecologica Sinica*, **34**, 2916-2928. (In Chinese) <http://www.cnki.com.cn/Article/CJFDTOTAL-STXB201411014.htm>
- [33] Chen, R.S., Kang, E.S and Ding, Y.J. (2014) Some Knowledge on and Parameters of China's Alpine Hydrology. *Advances in Water Science*, **25**, 307-317. (In Chinese) <http://www.cnki.com.cn/Article/CJFDTOTAL-SKXJ201403001.htm>
- [34] Liu, Z.W., Chen R.S., Song, Y.X. and Han, C.T. (2014) Water Holding Capacity of Mosses under Alpine Shrubs in Qilian Mountains. *Arid Land Geography*, **37**, 698-703. (In Chinese) <http://www.cnki.com.cn/Article/CJFDTOTAL-GHDL201404009.htm>
- [35] Soil Survey Staff (2014) Keys to Soil Taxonomy. 12th Edition, USDA-NRCS, Washington DC, 37-40.
- [36] Zhang, G.L. and Gong, Z.T., Eds. (2012) Soil Survey Laboratory Methods. Science Press, Beijing, 40-44. (In Chinese)
- [37] Liu, S.L., Lin, L., Guo, X.W., Li, J., Ouyang, J.Z. and Du, Y.G. (2014) The Variation Feature of Soil Inorganic Carbon Storage in Alpine Grassland in Qinghai Province. *Acta Ecologica Sinica*, **34**, 5953-5961. (In Chinese)
- [38] Arkey, R.J. (1963) Calculation of Carbonate and Water Movement in Soil from Climatic Data. *Soil Science*, **96**, 239-248. http://journals.lww.com/soilsci/Citation/1963/10000/Calculation_of_Carbonate_and_Water_Movement_in.3.aspx
<https://doi.org/10.1097/00010694-196310000-00003>
- [39] Ruhe, R.V. (1984) Soil Climate System across the Prairies in the Midwestern U.S.A. *Geoderma*, **34**, 201-219. [https://doi.org/10.1016/0016-7061\(84\)90039-9](https://doi.org/10.1016/0016-7061(84)90039-9)
- [40] Royer, D.L. (1999) Depth to Pedogenic Carbonate Horizon as a Paleoprecipitation Indicator. *Geology*, **27**, 1123-1126. <http://geology.gsapubs.org/content/27/12/1123.short>
[https://doi.org/10.1130/0091-7613\(1999\)027<1123:DTPCHA>2.3.CO;2](https://doi.org/10.1130/0091-7613(1999)027<1123:DTPCHA>2.3.CO;2)
- [41] Niu, Y., Liu, X.D., Jing, W.M., Lei, J. and Che, Z.X. (2013) Comparative Study on Climate Gradient Changes in the North Slope of Qilian Mountains. *Journal of Gansu Agricultural University*, **48**, 86-91. (In Chinese) <http://www.cnki.com.cn/Article/CJFDTOTAL-GSND201302019.htm>

Submit or recommend next manuscript to SCIRP and we will provide best service for you:

Accepting pre-submission inquiries through Email, Facebook, LinkedIn, Twitter, etc.

A wide selection of journals (inclusive of 9 subjects, more than 200 journals)

Providing 24-hour high-quality service

User-friendly online submission system

Fair and swift peer-review system

Efficient typesetting and proofreading procedure

Display of the result of downloads and visits, as well as the number of cited articles

Maximum dissemination of your research work

Submit your manuscript at: <http://papersubmission.scirp.org/>

Or contact as@scirp.org