

# A Two Stage Batch Arrival Queue with Reneging during Vacation and Breakdown Periods

Monita Baruah<sup>1\*</sup>, Kailash C. Madan<sup>2</sup>, Tillal Eldabi<sup>1</sup>

<sup>1</sup>Brunel Business School, Brunel University, London, UK

<sup>2</sup>College of Information Technology, Ahlia University, Manama, Bahrain

Email: \*Monita.Baruah@brunel.ac.uk, monitabr@brunel.ac.uk, kmadan@ahlia.edu.bh, Tillal.Eldabi@brunel.ac.uk

Received September 30, 2013; revised October 30, 2013; accepted November 7, 2013

Copyright © 2013 Monita Baruah *et al.* This is an open access article distributed under the Creative Commons Attribution License, which permits unrestricted use, distribution, and reproduction in any medium, provided the original work is properly cited.

## ABSTRACT

We study a two stage queuing model where the server provides two stages of service one by one in succession. We consider reneging to occur when the server is unavailable during the system breakdown or vacation periods. We concentrate on deriving the steady state solutions by using supplementary variable technique and calculate the mean queue length and mean waiting time. Further some special cases are also discussed and numerical examples are presented.

**Keywords:** Two-Stage Service; Batch Arrivals; Breakdowns; Reneging; Steady State Queue Size

## 1. Introduction

Queues with impatient customers have attracted the attention of many researchers and we see significant contribution by numerous researchers in this area. One of the earliest works on balking and reneging was by Haight [1,2], Barrer [3], which was the first to introduce reneging in which he studied deterministic reneging with single server markovian arrival and service rates. Another early work on markovian reneging with markovian and arrival and service pattern was by Ancker and Gafarian [4], Haghghi *et al.* [5] studied a markovian multiserver queuing system with balking and reneging. Consequently, we see a lot of developments in the study of queues with impatient customers in recent years. An M/G/1 queue with deterministic reneging was studied by Bae *et al.* [6]. We refer to some authors like Zhang *et al.* [7], El-Paoumy [8], Altman and Yechiali [9,10], Kumar and Sharma [11] who studied queues with impatient customers in different contexts.

Vacation queues are an important area in the literature of queuing theory. Since the past two decades it has emerged as an important area of study due to its various applicability in real life problems such as telecommunication engineering, manufacturing and production industries, computer and communication networks etc. A few

of early works on queues with vacations are seen by authors like Levy and Yechailai [12], Doshi [13], Keilson and Servi [14]. A two stage batch arrival queuing system where customers receive a batch service in the first and individual service in the second stage was studied by Doshi [15] in the past. In recent years, extensive amount of work has been done on batch arrival queues with vacations and breakdowns. We mention a few recent papers by Kumar and Arumuganathan [16], Choudhury, Tadj and Paul [17], Maraghi, Madan and Darby-Dowman [18], Khalaf, Madan and Lukas [19].

In this paper we consider a batch arrival queue where service is offered in two stages of service, one by one in succession. We extend and develop this model by adding new assumptions reneging and system breakdowns. Customers may renege (leave the queue after joining) during server breakdowns or during the time when the server takes vacation due to impatience. This is a very realistic assumption and often we come across such queuing situations in the real world.

## 2. The Mathematical Model

a) Customers arrive in batches following a compound Poisson Process with rate of arrival  $\lambda$ .

Let  $\lambda c_i dt$  ( $i=1,2,3,\dots$ ) be the first order probability that customers arrive at the system in batches of size  $i$ , at the system at a short interval of time  $(x, x+dt]$ , where

\*Corresponding author.

$$0 \leq c_i \leq 1 \text{ and } \sum_{i=1}^{\infty} c_i = 1.$$

b) The server provides two stages of heterogeneous services one after the other in succession. An arrival batch shall receive the service offered at two stages one by one in succession, defined as the first stage (FS) and second stage (SS) service respectively. The service discipline is assumed to be on a first come first served basis (FCFS).

We assume that the service time  $S_j$  ( $j = 1, 2$ ) of the  $j^{\text{th}}$  stage service follows a general probability distribution with distribution function  $B_j(s_j)$ ,  $b_j(s_j)$  being the probability density function and  $E(S_j^n)$  as the  $n^{\text{th}}$  moment of the service time,  $j = 1, 2$ .

Let  $\mu_j(x)$  be the conditional probability of stage  $j$  service during the period  $(x, x + dt]$  given elapsed time is  $x$  such that

$$\mu_j(x) = \frac{b_j(x)}{1 - B_j(x)} \quad j = 1, 2 \tag{1}$$

and

$$b_j(s_j) = \mu_j(x) \exp\left[-\int_0^s \mu_j(x) dx\right], \quad j = 1, 2. \tag{2}$$

c) Once the second stage service (SS) of a unit is complete the server is assumed to take vacation with probability  $p$  or may continue to offer service with probability  $(1 - p)$ . As soon as the vacation period of the server is over, he joins the system to continue service of the waiting customers.

We assume the vacation time to be a random variable following general probability law with distribution function given by  $W(v)$  and density function by  $w(v)$  and  $E(V^n)$  is the  $n^{\text{th}}$  moment ( $n = 1, 2, \dots$ ) of vacation time. Here we assume that  $\phi(x)$  be the conditional probability of a vacation period during the interval  $(x, x + dx]$ , given that elapsed time is  $x$ , so that

$$\phi(x) = \frac{W(x)}{1 - W(x)} \tag{3}$$

and thus

$$w(v) = \phi(v) \exp\left[-\int_0^v \phi(x) dx\right] \tag{4}$$

d) In addition, customers arriving for service may become impatient and renege (leave the queue) after joining during vacations and breakdown periods. Reneging is assumed to follow exponential distribution with parameter  $\gamma$ . Thus  $f(t) = \gamma e^{-\gamma t}$ ,  $\gamma > 0$ . Thus  $\gamma dt$  is the probability that a customer can renege during a short interval of time  $(t, t + dt]$ .

The system may fail or be subjected to breakdown at

random. The customer receiving service during breakdown returns back to the head of the queue. We assume that time between breakdowns occur according to a Poisson process with mean rate of breakdown as  $\alpha > 0$ . Further the repair times follows a general (arbitrary) distribution with distribution function  $F(x)$  and density function  $f(x)$ . Let the conditional probability of completion of the repair process is  $\beta(x)dx$  such that  $\beta(x) = \frac{F(x)}{1 - F(x)}$

$$\text{and thus } F(r) = \beta(r) \exp\left(-\int_0^r \beta(x) dx\right).$$

### 3. Definitions and Notations

We assume that steady state exists and define  $P_{n,j}(x)$  = Probability that there are  $n$  ( $\geq 1$ ) customers in the system including one customer in type  $j$  service,  $j = 1, 2$  and

elapsed service time is  $x$ . Thus  $P_{n,j} = \int_0^{\infty} P_{n,j}(x) dx$  is the

corresponding steady state probability irrespective of elapsed time  $x$ .

$V_n(x)$  = probability that there are  $n$  ( $\geq 0$ ) customers in the queue and server is on vacation and elapsed vacation

time is  $x$ .  $V_n = \int_0^{\infty} V_n(x) dx$  is the corresponding steady

state probability irrespective of elapsed vacation time  $x$ .

$Q$  = Steady state probability of the server is idle as the server takes vacation.

The Probability Generating Functions are defined as:

$$P_j(x, z) = \sum_{n=1}^{\infty} z^n P_{n,j}(x); \quad P_j(z) = \sum_{n=1}^{\infty} z^n P_{n,j} \tag{5}$$

$$|z| \leq 1; \quad j = 1, 2$$

$$R(x, z) = \sum_{n=1}^{\infty} z^n R_n(x); \quad R(z) = \sum_{n=1}^{\infty} z^n R_n; \quad |z| \leq 1 \tag{6}$$

$$V(x, z) = \sum_{n=1}^{\infty} z^n V(x); \quad V(z) = \sum_{n=1}^{\infty} z^n V_n; \quad |z| \leq 1 \tag{7}$$

$$C(z) = \sum_{i=1}^n z^i c_i. \tag{8}$$

### 4. Equations Governing the System

Under this model we construct the differential equations as

$$\frac{d}{dx} P_{n,1}(x) + \{\lambda + \mu_1(x) + \alpha\} P_{n,1}(x) \tag{9}$$

$$= \lambda \sum_{i=1}^n c_i P_{n-i,1}(x) \quad n \geq 1$$

$$\begin{aligned} \frac{d}{dx} P_{n,2}(x) + \{\lambda + \mu_2(x) + \alpha\} P_{n,2}(x) \\ = \lambda \sum_{i=1}^n c_i P_{n-i,2}(x) \quad n \geq 1 \end{aligned} \tag{10}$$

$$\begin{aligned} \frac{d}{dx} R_n(x) + \{\lambda + \beta(x) + \gamma\} R_n(x) \\ = \lambda \sum_{i=1}^{\infty} c_i R_{n-i}(x) + \gamma R_{n+1} \quad n \geq 1 \end{aligned} \tag{11}$$

$$\frac{d}{dx} R_0(x) + (\lambda + \beta(x)) R_0(x) = \gamma R_1(x) \tag{12}$$

$$\begin{aligned} \frac{d}{dx} V_n(x) + \{\lambda + \phi(x) + \gamma\} V_n(x) \\ = \lambda \sum_{i=1}^n c_i V_{n-i}(x) + \gamma V_{n+1} \quad n \geq 1 \end{aligned} \tag{13}$$

$$\frac{d}{dx} V_0(x) + (\lambda + \phi(x)) V_0(x) = \gamma V_1(x) \tag{14}$$

$$\begin{aligned} \lambda Q = (1-p) \int_0^{\infty} P_{0,2}(x) \mu_2(x) dx \\ + \int_0^{\infty} V_0(x) \phi(x) dx + \int_0^{\infty} R_0(x) \beta(x) dx \end{aligned} \tag{15}$$

The above differential equations now have to be solved subject to the following boundary conditions:

$$\begin{aligned} P_{n,1}(0) = \lambda c_n Q + (1-p) \int_0^{\infty} P_{n+1,2}(x) \mu_2(x) dx \\ + \int_0^{\infty} R_{n+1}(x) \beta(x) dx + \int_0^{\infty} V_n(x) \phi(x) dx \quad n \geq 1 \end{aligned} \tag{16}$$

$$P_{n,2}(0) = \int_0^{\infty} P_{n,1}(x) \mu_1(x) dx \quad n \geq 1 \tag{17}$$

$$V_n(0) = p \int_0^{\infty} P_{n+1,2}(x) \mu_2(x) dx \quad n \geq 0 \tag{18}$$

$$\begin{aligned} R_{n+1}(0) = \alpha \int_0^{\infty} P_{n,1}(x) dx + \alpha \int_0^{\infty} P_{n,2}(x) dx \\ = \alpha P_{n,1} + \alpha P_{n,2} \quad n \geq 0 \end{aligned} \tag{19}$$

$$R_0(0) = 0 \tag{20}$$

### 5. Queue Size Distribution at Random Epoch

Multiplying Equations (9) and (10) by  $z^n$  and summing over  $n$  from 1 to  $\infty$ , yields

$$\frac{d}{dx} P_1(x, z) + \{(\lambda - \lambda C(z)) + \mu_1(x) + \alpha\} P_1(x, z) = 0 \tag{21}$$

$$\frac{d}{dx} P_2(x, z) + \{(\lambda - \lambda C(z)) + \mu_2(x) + \alpha\} P_2(x, z) = 0 \tag{22}$$

Applying the same process in Equation (11) and using (12) gives

$$\begin{aligned} \frac{d}{dx} R(x, z) + \left\{ \lambda - \lambda C(z) + \beta(x) + \gamma - \frac{\gamma}{z} \right\} R(x, z) \\ = 0 \end{aligned} \tag{23}$$

Similarly from (13) and (14), we get

$$\frac{d}{dx} V(x, z) + \left( \lambda - \lambda C(z) + \phi(x) + \gamma - \frac{\gamma}{z} \right) = 0 \tag{24}$$

Further integrating Equations (21)-(24) over limits 0 to  $x$  gives us the following

$$\begin{aligned} P_1(x, z) = \\ P_1(0, z) \exp \left[ (\lambda - \lambda C(z) + \alpha) x - \int_0^{\infty} \mu_1(t) dt \right] \end{aligned} \tag{25}$$

$$\begin{aligned} P_2(x, z) = \\ P_2(0, z) \exp \left[ (\lambda - \lambda A(z) + \alpha) x - \int_0^{\infty} \mu_2(t) dt \right] \end{aligned} \tag{26}$$

$$\begin{aligned} R(x, z) = \\ R(0, z) \exp \left[ \left( \lambda - \lambda C(z) + \gamma - \frac{\gamma}{z} \right) x - \int_0^{\infty} \beta(t) dt \right] \end{aligned} \tag{27}$$

$$\begin{aligned} V(x, z) = \\ V(0, z) \exp \left[ \left( \lambda - \lambda C(z) + \gamma - \frac{\gamma}{z} \right) x - \int_0^{\infty} \phi(t) dt \right] \end{aligned} \tag{28}$$

Next multiplying the boundary conditions by suitable powers of  $z^{n+1}$  and taking summation over all possible values of  $n$  and using the PGF's we get after simplification

$$\begin{aligned} z P_1(0, z) = (\lambda C(z) - \lambda) Q \\ + (1-p) \int_0^{\infty} P_2(x, z) \mu_2(x) dx \end{aligned} \tag{29}$$

$$\begin{aligned} + \int_0^{\infty} R(x, z) \beta(x) dx + \int_0^{\infty} V(x, z) \phi(x) dx \\ P_2(0, z) = \int_0^{\infty} P_1(x, z) \mu_1(x) dx \end{aligned} \tag{30}$$

$$z V(0, z) = p \int_0^{\infty} P_2(x, z) \mu_2(x) dx \tag{31}$$

Now multiplying Equation (19) by  $z^{n+1}$ , summing over  $n$  from 0 to  $\infty$ , and using (20) and PGF's we have

$$R(0, z) = \alpha z [P_1(z) + P_2(z)] \tag{32}$$

Again integrating Equations (25)-(28) with respect to  $x$ , gives us

$$P_1(z) = P_1(0, z) \left[ \frac{1 - B_1^*(\lambda - \lambda C(z) + \alpha)}{\lambda - \lambda C(z) + \alpha} \right] \quad (33)$$

$$P_2(z) = P_2(0, z) \left[ \frac{1 - B_2^*(\lambda - \lambda C(z) + \alpha)}{\lambda - \lambda C(z) + \alpha} \right] \quad (34)$$

$$V(z) = V(0, z) \left[ \frac{1 - W^*\left(\lambda - \lambda C(z) + \gamma - \frac{\gamma}{z}\right)}{\lambda - \lambda C(z) + \gamma - \frac{\gamma}{z}} \right] \quad (35)$$

$$R(z) = R(0, z) \left[ \frac{1 - F^*\left(\lambda - \lambda C(z) + \gamma - \frac{\gamma}{z}\right)}{\lambda - \lambda C(z) + \gamma - \frac{\gamma}{z}} \right] \quad (36)$$

where

$$B_1^*(\lambda - \lambda C(z) + \alpha) = \int_0^\infty e^{-(\lambda - \lambda C(z) + \alpha)x} dB_1(x),$$

$$B_2^*(\lambda - \lambda C(z) + \alpha) = \int_0^\infty e^{-(\lambda - \lambda C(z) + \alpha)x} dB_2(x)$$

$$F^*\left(\lambda - \lambda C(z) + \gamma - \frac{\gamma}{z}\right) = \int_0^\infty e^{-\left(\lambda - \lambda C(z) + \gamma - \frac{\gamma}{z}\right)x} dF(x)$$

and

$$W^*\left(\lambda - \lambda C(z) + \gamma - \frac{\gamma}{z}\right) = \int_0^\infty e^{-\left(\lambda - \lambda C(z) + \gamma - \frac{\gamma}{z}\right)x} dW(x)$$

are the Laplace-Stieltjes transform of the first stage service time, second stage service time, repair time and vacation time respectively.

Now we determine the integrals

$$\int_0^\infty P_1(x, z) \mu_1(x) dx,$$

$$\int_0^\infty P_2(x, z) \mu_2(x, z) dx,$$

$$\int_0^\infty R(x, z) \beta(x) dx$$

and

$$\int_0^\infty V(x, z) \phi(x) dx$$

by multiplying the RHS of Equations (25)-(28) by  $\mu_1(x), \mu_2(x), \beta(x)$  and  $\phi(x)$  respectively and integrate with respect to  $x$  and obtain

$$\int_0^\infty P_1(x, z) \mu_1(x) dx = P_1(0, z) B_1^*(\lambda - \lambda C(z) + \alpha) \quad (37)$$

$$\int_0^\infty P_2(x, z) \mu_2(x) dx = P_2(0, z) B_2^*(\lambda - \lambda C(z) + \alpha) \quad (38)$$

$$\int_0^\infty R(x, z) \beta(x) dx = R(0, z) F^*\left(\lambda - \lambda C(z) + \gamma - \frac{\gamma}{z}\right) \quad (39)$$

$$\int_0^\infty V(x, z) \phi(x) dx = V(0, z) W^*\left(\lambda - \lambda C(z) + \gamma - \frac{\gamma}{z}\right) \quad (40)$$

Let us take

$$\lambda - \lambda C(z) + \alpha = m; \quad \lambda - \lambda C(z) + \gamma - \frac{\gamma}{z} = k$$

Utilizing (37)-(40) in Equations (29)-(31) we obtain

$$zP_1(0, z) = (\lambda C(z) - \lambda)Q + (1 - p)B_2^*(m)P_2(0, z) + R(0, z)F^*(k) + zV(0, z)W^*(k) \quad (41)$$

$$P_2(0, z) = P_1(0, z)B_1^*(m) \quad (42)$$

$$V(0, z) = pP_2(0, z)B_2^*(m) \quad (43)$$

Using (42) in (43) we get,

$$zV(0, z) = pP_1(0, z)B_1^*(m)B_2^*(m) \quad (44)$$

Again from (32) using (33) and (34) we get

$$R(0, z) = \frac{\alpha z}{m} \left[ P_1(0, z) [1 - B_1^*(m)] + P_2(0, z) [1 - B_2^*(m)] \right] \quad (45)$$

Now using (42), (44) and (45) in Equation (41), we solve for  $P_1(0, z)$

$$P_1(0, z) = \frac{m(\lambda C(z) - \lambda)Q}{D(z)} \quad (46)$$

and

$$D(z) = m \left[ z - (1 - p)B_1^*(m)B_2^*(m) - pB_1^*(m)B_2^*(m)W^*(k) - \alpha z F^*(k) \{1 - B_1^*(m)B_2^*(m)\} \right] \quad (47)$$

$$P_2(0, z) = \frac{m(\lambda C(z) - \lambda)B_1^*(m)Q}{D(z)} \quad (48)$$

$$V(0, z) = \frac{pm(\lambda C(z) - \lambda)B_1^*(m)B_2^*(m)Q}{D(z)} \quad (49)$$

Substituting the values from (46), (48) and (49) in (33)-(36), we obtain

$$P_1(z) = \frac{(\lambda C(z) - \lambda) [1 - B_1^*(m)] Q}{D(z)} \quad (50)$$

$$P_2(z) = \frac{(\lambda C(z) - \lambda) B_1^*(m) [1 - B_2^*(m)] Q}{D(z)} \quad (51)$$

$$R(z) = \frac{\alpha z (\lambda C(z) - \lambda) [1 - B_1^*(m) B_2^*(m)] Q}{D(z)} \left[ \frac{1 - F^*(k)}{k} \right] \tag{52}$$

$$V(z) = \frac{pm (\lambda C(z) - \lambda) B_1^*(m) B_2^*(m) Q}{D(z)} \left[ \frac{1 - W^*(k)}{k} \right] \tag{53}$$

Let  $P_q(z)$  denote the probability generating function of the queue size irrespective of the state of the system.

$$P_q(z) = P_1(z) + P_2(z) + R(z) + V(z) = \frac{N(z)}{D(z)} \tag{54}$$

In order to determine the probability of idle time  $Q$ , we use the normalizing condition  $P_q(1) + Q = 1$ . Again since (51) is indeterminate of the form 0/0 at  $z = 1$ , we use L'Hopital's Rule on Equation (51) to obtain

$$P_1(1) = \frac{\lambda E(I) (1 - B_1^*(\alpha)) Q}{-(\lambda E(I) + \alpha(\lambda E(I) - \gamma) E(R)) + [\alpha + \lambda E(I) + \alpha(\lambda E(I) - \gamma) E(R) - p\alpha(\lambda E(I) - \gamma) E(V)] B_1^*(\alpha) B_2^*(\alpha)} \tag{55}$$

(55) is the steady state probability that server is providing service in stage 1.

The steady state probability that server is providing service in stage two is

$$P_2(1) = \frac{\lambda E(I) B_1^*(\alpha) (1 - B_2^*(\alpha)) Q}{-(\lambda E(I) + \alpha(\lambda E(I) - \gamma) E(R)) + [\alpha + \lambda E(I) + \alpha(\lambda E(I) - \gamma) E(R) - p\alpha(\lambda E(I) - \gamma) E(V)] B_1^*(\alpha) B_2^*(\alpha)} \tag{56}$$

$$R(1) = \frac{\alpha \lambda E(I) E(R) [1 - B_1^*(\alpha) B_2^*(\alpha)] Q}{-(\lambda E(I) + \alpha(\lambda E(I) - \gamma) E(R)) + [\alpha + \lambda E(I) + \alpha(\lambda E(I) - \gamma) E(R) - p\alpha(\lambda E(I) - \gamma) E(V)] B_1^*(\alpha) B_2^*(\alpha)} \tag{57}$$

$$V(1) = \frac{p\alpha \lambda E(I) E(V) B_1^*(\alpha) B_2^*(\alpha) Q}{-(\lambda E(I) + \alpha(\lambda E(I) - \gamma) E(R)) + [\alpha + \lambda E(I) + \alpha(\lambda E(I) - \gamma) E(R) - p\alpha(\lambda E(I) - \gamma) E(V)] B_1^*(\alpha) B_2^*(\alpha)} \tag{58}$$

where  $C(1) = 1, C'(1) = E(I)$  is the mean of arriving batch of customers,  $-F''(0) = E(R)$  is the mean repair

time and  $-W''(0) = E(V)$  is the mean vacation time.

Thus the normalization condition yields

$$Q = 1 - \frac{\lambda E(I) [\{1 + \alpha E(R)\} - \{1 + \alpha E(R) - p\alpha E(V)\} B_1^*(\alpha) B_2^*(\alpha)]}{\alpha \gamma E(R) [1 - B_1^*(\alpha) B_2^*(\alpha)] + p\alpha \gamma B_1^*(\alpha) B_2^*(\alpha)} \tag{59}$$

And therefore the traffic intensity (utilization factor)  $\rho = 1 - Q$  is

$$\rho = \frac{\lambda E(I) [\{1 + \alpha E(R)\} - \{1 + \alpha E(R) - p\alpha E(V)\} B_1^*(\alpha) B_2^*(\alpha)]}{\alpha \gamma E(R) [1 - B_1^*(\alpha) B_2^*(\alpha)] + p\alpha \gamma B_1^*(\alpha) B_2^*(\alpha)} < 1 \tag{60}$$

### 6. Average Queue Size and Average Waiting Time

Since  $L_q = \left. \frac{d}{dz} P_q(z) \right|_{z=1}$ , the mean queue size is of the

0/0 form, we apply L'Hopital's Rule twice and obtain

$$L_q = \lim_{z \rightarrow 1} \frac{D'(z) N''(z) - N'(z) D''(z)}{2(D'(z))^2} \tag{61}$$

where primes and double primes denote the first and

second derivatives respectively.

$$N'(1) = Q[\lambda E(I)\{1 + \alpha E(R)\} - \lambda E(I)\{1 + \alpha E(R) - p\alpha E(V)\} B_1^*(\alpha) B_2^*(\alpha)] \tag{62}$$

$$N''(1) = Q[\lambda E(I/I-1)\{[1 - B_1^*(\alpha) B_2^*(\alpha)] + \alpha[1 - B_1^*(\alpha) B_2^*(\alpha)] E(R) + p\alpha B_1^*(\alpha) B_2^*(\alpha) E(V)\} - \lambda E(I)\{[1 + \alpha E(R) - p\alpha E(V)] [B_1''(\alpha) B_2^*(\alpha) + B_2''(\alpha) B_1^*(\alpha)] + \alpha(\lambda E(I) - \gamma) E(R^2) [1 - B_1^*(\alpha) B_2^*(\alpha)] + (\lambda E(I) - \gamma) E(V^2) B_1^*(\alpha) B_2^*(\alpha)\}] \tag{63}$$

$$D'(1) = -\{\lambda E(I) + \alpha(\lambda E(I) - \gamma) E(R)\} + \{\lambda E(I) + \alpha(\lambda E(I) - \gamma) E(R) - p\alpha(\lambda E(I) - \gamma) E(V) + \alpha\} B_1^*(\alpha) B_2^*(\alpha) \tag{64}$$

$$D''(1) = -\lambda E(I/I-1) [(1 + \alpha E(R)) - B_1^*(\alpha) B_2^*(\alpha) \{1 - \alpha E(R) + p\alpha E(V)\}] - 2\alpha\gamma E(R) \{1 - B_1^*(\alpha) B_2^*(\alpha)\} + \alpha(\lambda E(I) - \gamma)^2 E(R^2) \{1 - B_1^*(\alpha) B_2^*(\alpha)\} - p\alpha \{2\gamma E(V) - (\lambda E(I) - \gamma)^2 E(V^2)\} B_1^*(\alpha) B_2^*(\alpha) + \{\lambda E(I) + \alpha(\lambda E(I) - \gamma) E(R) - p\alpha(\lambda E(I) - \gamma) E(V)\} \{B_1''(\alpha) B_2^*(\alpha) + B_2''(\alpha) B_1^*(\alpha)\} \tag{65}$$

where  $Q$  is given by (59),  $F'' = E(R^2)$ ,  $W'' = E(V^2)$  are the second moments of repair time and vacation time respectively, and  $E(I/I-1)$  is the second factorial moment of batch of arriving customers. Hence utilizing (62)-(65) in (61), we can obtain the mean length of queue size at random epoch  $L_q$  and the mean waiting time of the queue  $W_q$  can be obtained by using  $W_q = \frac{L_q}{\lambda}$ . Alternatively, we can find  $L = L_q + \rho$ , the mean queue size of the system and  $W = \frac{L}{\lambda}$ , the mean waiting time in the system.

### 7. Special Cases

#### 7.1. Case 1. No Server Vacations

In this case, the server has no option to take a vacation. Hence  $V(z) = 0$ . Thus letting  $p = 0$  in our results (50)-(52), we obtain the following and our model reduces to a two stage batch arrivals with renegeing during breakdowns.

$$P_1(z) = \frac{(\lambda C(z) - \lambda) [1 - B_1^*(m)] Q}{D(z)} \tag{66}$$

$$P_1(z) = \frac{(\lambda C(z) - \lambda) B_1^*(m) [1 - B_2^*(m)] Q}{D(z)} \tag{67}$$

$$R(z) = \frac{\alpha z (\lambda C(z) - \lambda) B_1^*(m) B_2^*(m) Q}{D(z)} \left[ \frac{1 - F^*(k)}{k} \right] \tag{68}$$

and

$$D(z) = m [z - B_1^*(m) B_2^*(m)] - \alpha z F^*(k) B_1^*(m) B_2^*(m) \tag{69}$$

The probability of idle time is

$$Q = \frac{\lambda E(I) \{ (1 + \alpha E(R)) - (1 + \alpha E(R)) B_1^*(\alpha) B_2^*(\alpha) \}}{1 - \alpha \gamma E(R) \{ 1 - B_1^*(\alpha) B_2^*(\alpha) \}} \tag{70}$$

And the traffic intensity  $\rho$  is

$$Q = \frac{\lambda E(I) \{ (1 + \alpha E(R)) - (1 + \alpha E(R)) B_1^*(\alpha) B_2^*(\alpha) \}}{\alpha \gamma E(R) \{ 1 - B_1^*(\alpha) B_2^*(\alpha) \}} \tag{71}$$

Further putting  $p = 0$  in the Equations (62)-(65) we can obtain the mean queue size  $L_q$  and mean waiting time  $W_q$ .

#### 7.2. Case 2. No Reneging

In this case we consider that customers do not renege during breakdowns and vacations. So we let the parameter  $\gamma = 0$ . Then  $k = \lambda - \lambda C(z)$ . Then our model reduces to a two stage batch arrival queuing system with vacations and breakdowns. Thus Equations (50)-(53) changes to

$$P_1(z) = \frac{[\lambda C(z) - \lambda] [1 - B_1^*(m)] Q}{D(z)} \tag{72}$$

$$P_1(z) = \frac{[\lambda C(z) - \lambda] B_1^*(m) [1 - B_2^*(m)] Q}{D(z)} \tag{73}$$

$$R(z) = \frac{\alpha [F^*(\lambda - \lambda C(z)) - 1] [1 - B_1^*(m) B_2^*(m)] Q}{D(z)} \tag{74}$$

$$W(z) = \frac{pm [W^*(\lambda - \lambda C(z)) - 1] B_1^*(m) B_2^*(m) Q}{D(z)} \tag{75}$$

where

$$D(z) = m [z - \{(1-p) + pW^*(\lambda - \lambda C(z))\} B_1^*(m) B_2^*(m)] - \alpha z F^*(\lambda - \lambda C(z)) \{1 - B_1^*(m) B_2^*(m)\}$$

The probability of idle time  $Q$

$$Q = 1 - \lambda E(I) \left[ \frac{1}{\alpha B_1^*(\alpha) B_2^*(\alpha)} + \frac{E(R)}{B_1^*(\alpha) B_2^*(\alpha)} - \frac{1}{\alpha} - E(R) + pE(V) \right] \tag{76}$$

And the utilization factor is

$$\rho = \lambda E(I) \left[ \frac{1}{\alpha B_1^*(\alpha) B_2^*(\alpha)} + \frac{E(R)}{B_1^*(\alpha) B_2^*(\alpha)} - \frac{1}{\alpha} - E(R) + pE(V) \right] \tag{77}$$

The result (72)-(75) agrees with the result obtained by Margahi, Madan and Darby-Dowman for a Batch arrival queue with two stage Heterogeneous service, Bernoulli schedule vacations and general repair times.

$\gamma = 0$  in our Equations (50)-(53). Then  $m = \lambda - \lambda C(z)$  and  $k = \lambda - \lambda C(z)$ .

Thus we have

$$P_1(z) = \frac{[B_1^*(\lambda - \lambda C(z)) - 1] Q}{D(z)} \tag{78}$$

### 7.3. Case 3: No System Breakdowns and No Reneging

In this case, the server does not face any breakdown and there is also renegeing of customers. So we take  $\alpha = 0$ ,

$$P_1(z) = \frac{B_1^*(\lambda - \lambda C(z)) [B_2^*(\lambda - \lambda C(z)) - 1] Q}{D(z)} \tag{79}$$

$$V(z) = \frac{pB_1^*(\lambda - \lambda C(z)) B_2^*(\lambda - \lambda C(z)) [W^*(\lambda - \lambda C(z)) - 1]}{D(z)} \tag{80}$$

where

$$D(z) = z - \{(1-p) + pW^*(\lambda - \lambda C(z))\} B_1^*(\lambda - \lambda C(z)) B_2^*(\lambda - \lambda C(z))$$

The probability generating function of the queue size takes the form

$$P_q(z) = \frac{\{(1-p) + pW^*(\lambda - \lambda C(z))\} B_1^*(\lambda - \lambda C(z)) B_2^*(\lambda - \lambda C(z))}{D(z)} \tag{81}$$

The probability of idle time  $Q$  is

$$\rho = \lambda E(I) \{E(S_1) + E(S_2) + pE(V)\} < 1$$

$$Q = 1 - \lambda E(I) \{E(S_1) + E(S_2) + pE(V)\}$$

Thus (81) gives the steady state queue size of a  $M^x / (G_1, G_2) / 1$  vacation queue, i.e. a two stage batch arrival vacation queue.

and the traffic intensity is

**7.4. Case 4: Exponential Service Time and Exponential Vacation Time**

In this case we assume that the service time for the two stages of service with service rate  $\mu_1 > 0$ , and  $\mu_2 > 0$ , respectively are exponentially distributed. Further the repair time and vacation are all exponentially distributed with repair rate  $\beta > 0$  and vacation rate  $\phi > 0$ .

Thus

$$\begin{aligned}
 B_1^*(m) &= \frac{\mu_1}{\mu_1 + m}; B_2^*(m) = \frac{\mu_2}{\mu_2 + m}; \\
 F^*(k) &= \frac{\beta}{\beta + k}; W^*(k) = \frac{\phi}{\phi + k} \\
 E(R) &= \frac{1}{\beta}; E(R^2) = \frac{2}{\beta^2} \\
 E(V) &= \frac{1}{\phi}; E(V^2) = \frac{2}{\phi^2}
 \end{aligned}
 \tag{82}$$

where

$$m = \lambda - \lambda C(z) + \alpha; k = \lambda - \lambda C(z) + \gamma - \frac{\gamma}{z}$$

Utilizing the above relations in Equations (50)-(53), we obtain

$$P_1(z) = \frac{[\lambda C(z) - \lambda] \left[ 1 - \frac{\mu_1}{\mu_1 + m} \right] Q}{D(z)} \tag{83}$$

$$P_2(z) = \frac{[\lambda C(z) - \lambda] \frac{\mu_1}{\mu_1 + m} \left[ 1 - \frac{\mu_2}{\mu_2 + m} \right] Q}{D(z)} \tag{84}$$

$$\begin{aligned}
 R(z) &= \\
 &= \frac{\alpha [\lambda C(z) - \lambda] \left[ 1 - \frac{\mu_1 \mu_2}{(\mu_1 + m)(\mu_2 + m)} \right] \frac{1}{(\beta + k)} Q}{D(z)}
 \end{aligned}
 \tag{85}$$

$$V(z) = \frac{pm [\lambda C(z) - \lambda] \frac{\mu_1 \mu_2}{(\mu_1 + m)(\mu_2 + m)(\phi + k)} Q}{D(z)} \tag{86}$$

where

$$D(z) = (\lambda - \lambda C(z) + \alpha) \left[ z - \left\{ (1-p) + p \frac{\phi}{\phi + k} \right\} \frac{\mu_1 \mu_2}{(\mu_1 + m)(\mu_2 + m)} \right] - \alpha z \left\{ 1 - \frac{\mu_1 \mu_2}{(\mu_1 + m)(\mu_2 + m)} \right\} \frac{\beta}{\beta + k}$$

Therefore the probability that the server is providing service in first stage at random point of time is

$$\begin{aligned}
 P_1(1) &= \frac{\lambda E(I) \left[ 1 - \frac{\mu_1}{\mu_1 + \alpha} \right] Q}{-\left( \lambda E(I) + \frac{\alpha(\lambda E(I) - \gamma)}{\beta} \right) + \left[ \alpha + \lambda E(I) + \alpha(\lambda E(I) - \gamma) \left\{ \frac{1}{\beta} - \frac{p}{\phi} \right\} \right] \frac{\mu_1 \mu_2}{(\mu_1 + \alpha)(\mu_2 + \alpha)}}
 \end{aligned}
 \tag{87}$$

Probability that server is providing service in second stage at random point of time is

$$\begin{aligned}
 P_2(1) &= \frac{\lambda E(I) \frac{\mu_1}{(\mu_1 + \alpha)} \left\{ 1 - \frac{\mu_2}{\mu_2 + \alpha} \right\} Q}{-\left( \lambda E(I) + \frac{\alpha(\lambda E(I) - \gamma)}{\beta} \right) + \left[ \alpha + \lambda E(I) + \alpha(\lambda E(I) - \gamma) \left\{ \frac{1}{\beta} - \frac{p}{\phi} \right\} \right] \frac{\mu_1 \mu_2}{(\mu_1 + \alpha)(\mu_2 + \alpha)}}
 \end{aligned}
 \tag{88}$$

Probability that the server is under repairs at random point of time is

$$\begin{aligned}
 R(1) &= \frac{\left[ \frac{\alpha \lambda E(I)}{\beta} \right] \left[ 1 - \frac{\mu_1 \mu_2}{(\mu_1 + \alpha)(\mu_2 + \alpha)} \right] Q}{-\left( \lambda E(I) + \frac{\alpha(\lambda E(I) - \gamma)}{\beta} \right) + \left[ \alpha + \lambda E(I) + \alpha(\lambda E(I) - \gamma) \left\{ \frac{1}{\beta} - \frac{p}{\phi} \right\} \right] \frac{\mu_1 \mu_2}{(\mu_1 + \alpha)(\mu_2 + \alpha)}}
 \end{aligned}
 \tag{89}$$

And probability that server is on vacation at random point of time is given by



$$V(1) = \frac{p\alpha \left[ \frac{\lambda E(I)}{\phi} \right] \frac{\mu_1 \mu_2}{(\mu_1 + \alpha)(\mu_2 + \alpha)} Q}{-\left( \lambda E(I) + \frac{\alpha(\lambda E(I) - \gamma)}{\beta} \right) + \left[ \alpha + \lambda E(I) + \alpha(\lambda E(I) - \gamma) \left\{ \frac{1}{\beta} - \frac{p}{\phi} \right\} \right] \frac{\mu_1 \mu_2}{(\mu_1 + \alpha)(\mu_2 + \alpha)}} \tag{90}$$

Probability that the server is idle but available in the system is

$$Q = 1 - \lambda E(I) \frac{\left[ \left\{ 1 + \frac{\alpha}{\beta} \right\} - \left\{ 1 + \frac{\alpha}{\beta} - \frac{p\alpha}{\phi} \right\} \frac{\mu_1 \mu_2}{(\mu_1 + \alpha)(\mu_2 + \alpha)} \right]}{\frac{\alpha\gamma}{\beta} \left\{ 1 - \frac{\mu_1 \mu_2}{(\mu_1 + \alpha)(\mu_2 + \alpha)} \right\} + p\alpha\gamma \frac{\mu_1 \mu_2}{(\mu_1 + \alpha)(\mu_2 + \alpha)}} \tag{91}$$

Similarly the mean queue size and mean waiting time can be derived by finding  $N'(1), N''(1), D'(1)$  and  $D''(1)$  and utilizing in Equation (61).

$$N'(1) = Q \left[ \lambda E(I) \left\{ 1 + \frac{\alpha}{\beta} \right\} - \lambda E(I) \left\{ 1 + \frac{\alpha}{\beta} - \frac{p\alpha}{\phi} \right\} \frac{\mu_1 \mu_2}{(\mu_1 + \alpha)(\mu_2 + \alpha)} \right]$$

$$N''(1) = Q \left[ \lambda E(I/I - 1) \left\{ \left( 1 + \frac{\alpha}{\beta} \right) \left( 1 - \frac{\mu_1 \mu_2}{(\mu_1 + \alpha)(\mu_2 + \alpha)} \right) + \frac{p\alpha}{\phi} \frac{\mu_1 \mu_2}{(\mu_1 + \alpha)(\mu_2 + \alpha)} \right\} \right. \\ \left. - 2\lambda E(I) \left\{ \frac{\alpha(\lambda E(I) - \gamma)}{\beta^2} \left( 1 - \frac{\mu_1 \mu_2}{(\mu_1 + \alpha)(\mu_2 + \alpha)} \right) + \frac{p(\lambda E(I) - \gamma)}{\phi^2} \frac{\mu_1 \mu_2}{(\mu_1 + \alpha)(\mu_2 + \alpha)} \right\} \right]$$

$$D'(1) = - \left[ \lambda E(I) + \frac{\alpha(\lambda E(I) - \gamma)}{\beta} \right] \\ + \left\{ \alpha + \lambda E(I) + \frac{\alpha(\lambda E(I) - \gamma)}{\beta} - \frac{p\alpha(\lambda E(I) - \gamma)}{\phi} \right\} \frac{\mu_1 \mu_2}{(\mu_1 + \alpha)(\mu_2 + \alpha)}$$

$$D''(1) = -\lambda E(I/I - 1) \left\{ \left( 1 + \frac{\alpha}{\beta} \right) + \frac{\mu_1 \mu_2}{(\mu_1 + \alpha)(\mu_2 + \alpha)} \left( 1 - \frac{\alpha}{\beta} + \frac{p\alpha}{\phi} \right) \right\} \\ - 2 \left[ \frac{\alpha\gamma}{\beta} + \frac{(\lambda E(I) - \gamma)^2}{\beta^2} \right] \left[ 1 - \frac{\mu_1 \mu_2}{(\mu_1 + \alpha)(\mu_2 + \alpha)} \right] - 2p\alpha \left[ \frac{\gamma}{\phi} + \frac{(\lambda E(I) - \gamma)^2}{\phi^2} \right] \frac{\mu_1 \mu_2}{(\mu_1 + \alpha)(\mu_2 + \alpha)} \\ - \left\{ \lambda E(I) + \frac{\alpha(\lambda E(I) - \gamma)}{\beta} - \frac{p\alpha(\lambda E(I) - \gamma)}{\phi} + \alpha \right\} \left\{ \frac{\mu_1 \mu_2}{(\mu_1 + \alpha)^2 (\mu_2 + \alpha)} + \frac{\mu_1 \mu_2}{(\mu_1 + \alpha)(\mu_2 + \alpha)^2} \right\}$$

### 8. Numerical Illustration

In order to see the effect of different parameters especially the reneging and breakdown parameter on the different states of the server, the utilization factor and proportion of idle time, we compute some numerical results. We consider the service time, vacation time and repair time to be exponentially distributed to numerically illustrate the feasibility of our results. Further we assume that

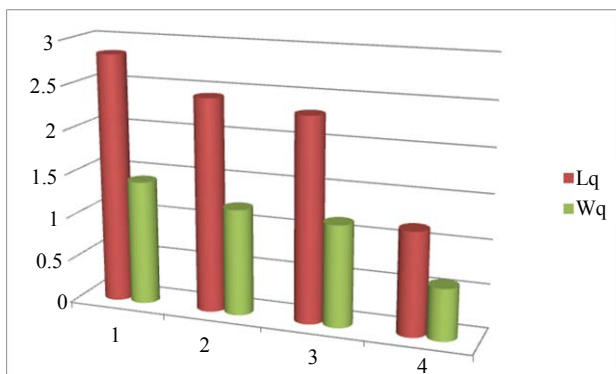
arrivals come one by one, *i.e.*  $E(I) = 1$  and  $E(I/I - 1) = 0$  with arrival rate  $\lambda = 2$ , first stage service rate  $\mu_1 = 4$  and second stage service rate  $\mu_2 = 8$

All the parameters are selected such that the steady state condition is satisfied.

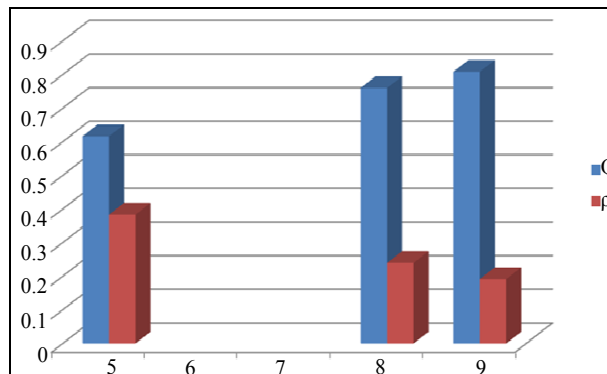
To monitor the effect of the reneging  $\gamma$  and breakdown  $\alpha$  on the behavior of the queuing model, we take  $\lambda = 2, \mu_1 = 4, \mu_2 = 8, \beta = 10, \phi = 7, p = 0.5$ , while  $\gamma$  varies from 5, 8, 9 and  $\alpha$  varies from 1 to 4, in **Table 1**.

**Table 1. Computing measures of queue characteristics when  $\lambda = 2, \mu_1 = 4, \mu_2 = 8, \beta = 10, \phi = 7, p = 0.5$ .**

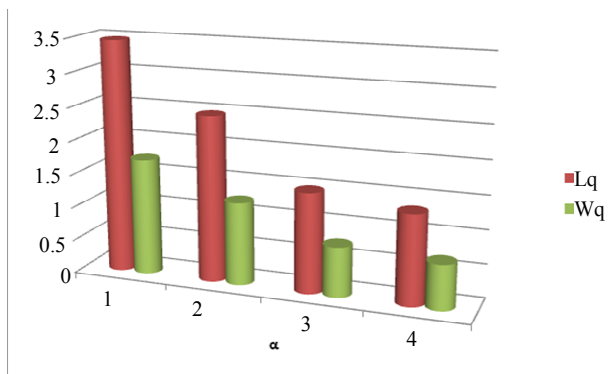
$\gamma$	$\alpha$	$Q$	$\rho$	$L_q$	$L$	$W_q$	$W$
5	1	0.6165	0.3835	2.835	3.2185	1.4175	1.6093
2		0.5939	0.4061	2.4236	2.8297	1.2118	1.4149
3		0.5749	0.4251	2.3144	2.7395	1.1572	1.3698
4		0.5592	0.4408	1.1716	1.6124	0.5858	0.8062
8	1	0.7603	0.2397	3.4685	3.7082	1.7343	1.8541
2		0.7462	0.2538	2.4689	2.7227	1.2345	1.3614
3		0.7343	0.2657	1.4885	1.7542	0.7443	0.8771
4		0.7245	0.275	1.3385	1.61	0.6693	0.807
0	1	0.8083	0.1917	2.0494	2.2411	1.0247	1.1206
2		0.7969	0.2031	1.3329	1.536	0.6665	0.768
3		0.7875	0.2125	1.221	1.4334	0.6105	0.7168
4		0.7796	0.2204	1.2170	1.4374	0.6085	0.7187



**Figure 1. Effect of  $\gamma=5$  and  $\alpha$  on the mean queue size  $L_q$  and mean waiting time  $W_q$ .**



**Figure 3. Effect of reneging  $\gamma$  and breakdown at  $\alpha=1$  on the proportion of idle time  $Q$  and utilization factor  $\rho$ .**



**Figure 2. Effect of  $\gamma=8$  and  $\alpha$  on the mean queue size  $L_q$  and mean waiting time  $W_q$ .**

Thus from **Table 1**, we observe that as we increase the parameter of customer's impatience reneging  $\gamma$ , for varying values of breakdown parameter  $\alpha$ , the utilization factor decreases, while the probability of server idle time increases. **Figures 1** and **2** show the effect of reneging and breakdown on the mean queue size  $L_q$ , mean waiting time  $W_q$ . It is clear that as breakdown occurs, it increases the average length of queue and due to customers reneging from the queue, the average waiting time also decreases. Again from **Figure 3**, it is clear that due to breakdown of the system and reneging, the proportion of idle time of the server increases and utilization factor or busy period decreases. The trends shown by the above table are as expected.

## REFERENCES

- [1] F. A. Haight, "Queueing with Balking," *Biometrika*, Vol. 44, No. 3-4, 1957, pp. 360-369.  
<http://dx.doi.org/10.2307/2332868>
- [2] F. A. Haight, "Queueing with Reneging," *Metrika*, Vol. 2, No. 1, 1959, pp. 186-197.  
<http://dx.doi.org/10.1007/BF02613734>
- [3] D. Y. Barrer, "Queueing with Impatient Customers and Ordered Service," *Operation Research*, Vol. 5, No. 5, 1957, pp. 650-656. <http://dx.doi.org/10.1287/opre.5.5.650>
- [4] C. J. Ancker Jr. and A. V. Gafarian, "Some Queueing Problems with Balking and Reneging," *Operations Research*, Vol. 11, No. 1, 1963, pp. 88-100.  
<http://dx.doi.org/10.1287/opre.11.1.88>
- [5] A. M. Hagighi, J. Medhi and S. G. Mohanty, "On a Multiserver Markovian Queueing System with Balking and Reneging," *Computer and Operational Research*, Vol. 13, No. 4, 1986, pp. 421-425.  
[http://dx.doi.org/10.1016/0305-0548\(86\)90029-8](http://dx.doi.org/10.1016/0305-0548(86)90029-8)
- [6] J. Bae, S. Kim and E. Y. Lee, "The Virtual Waiting time of the M/G/1 Queue with Impatient Customers," *Queueing Systems: Theory and Application*, Vol. 38, No. 4, 2001, pp. 485-494.
- [7] Y. Zhang, D. Yue and W. Yue, "Analysis of an M/M/1/N Queue with Balking, Reneging and Server Vacations," *International Symposium on OR and Its Applications*.  
[www.aporc.org/LNOR/6/ISORA2006F10.pdf](http://www.aporc.org/LNOR/6/ISORA2006F10.pdf)
- [8] M. S. El-Paoumy, "On Poisson Arrival Queue:  $M^X/M/2/N$  with Balking, Reneging and Heterogeneous Servers," *Applied Mathematical Sciences*, Vol. 2, No. 24, 2008, pp. 1169-1175.
- [9] E. Altman and U. Yechiali, "Analysis of Customers' Impatience in Queue with Server Vacations," *Queueing Systems*, Vol. 52, No. 4, 2006, pp. 261-279.  
<http://dx.doi.org/10.1007/s11134-006-6134-x>
- [10] E. Altman and U. Yechiali, "Infinite Server Queues with Systems Additional Tasks and Impatient Customers," *Probability in the Engineering and Information Sciences*, Vol. 22, No. 4, 2008, pp. 477-493.  
<http://dx.doi.org/10.1017/S0269964808000296>
- [11] R. Kumar and S. K. Sharma, "A Markovian Feedback Queue with Retention of Reneged Customers and Balking," *AMO-Advanced Modeling and Optimization*, Vol. 14, No. 3, 2012, pp. 681-688.
- [12] Y. Levy and U. Yechiali, "An M/M/s Queue with Server Vacations," *INFOR Journal*, Vol. 14, No. 2, 1976, pp. 153-163.
- [13] B. T. Doshi, "Queueing Systems with Vacations-A Survey," *Queueing Systems*, Vol. 1, No. 1, 1986, pp. 29-66.  
<http://dx.doi.org/10.1007/BF01149327>
- [14] J. Keilson and L. D. Servi, "The Dynamics of an M/G/1 Vacation Model," *Operations Research*, Vol. 35, No. 4, 1987, pp. 575-582.  
<http://dx.doi.org/10.1287/opre.35.4.575>
- [15] B. T. Doshi, "Analysis of a Two Phase Queueing System with General Service Times," *Operation Research Letters*, Vol. 10, No. 5, 1991, pp. 265-275.  
[http://dx.doi.org/10.1016/0167-6377\(91\)90012-E](http://dx.doi.org/10.1016/0167-6377(91)90012-E)
- [16] M. S. Kumar and R. Arumuganathan, "On the Single Server Batch Arrival Retrial Queue with General Vacation Time under Bernoulli Schedule and Two Phases of Heterogeneous Servers," *Quality Technology and Quantity Management*, Vol. 5, No. 2, 2008, pp. 145-160.
- [17] G. Choudhury, L. Tadj and M. Paul, "Steady State Analysis of an  $M^X/G/1$  Queue with Two Phase Service and Bernoulli Vacation Schedule under Multiple Vacation Policy," *Applied Mathematical Modelling*, Vol. 31, No. 6, 2007, pp. 1079-1091.  
<http://dx.doi.org/10.1016/j.apm.2006.03.032>
- [18] F. A. Maraghi, K. C. Madan and K. Darby-Dowman, "Bernoulli Schedule Vacation Queues with Batch Arrivals and Random System Breakdowns having General Repair Times Distribution," *International Journal of Operation Research*, Vol. 7, No. 2, 2010, pp. 240-256.
- [19] R. F. Khalaf, K. C. Madan and C. A. Lukas, "A  $M^X/G/1$  with Bernoulli Schedule General Vacation Times, General Extended Vacations, Random Breakdown, General Delay Time for Repairs to Start and General Repair Times," *Journal of Mathematical Research*, Vol. 3, No. 4, 2011, pp. 8-20.