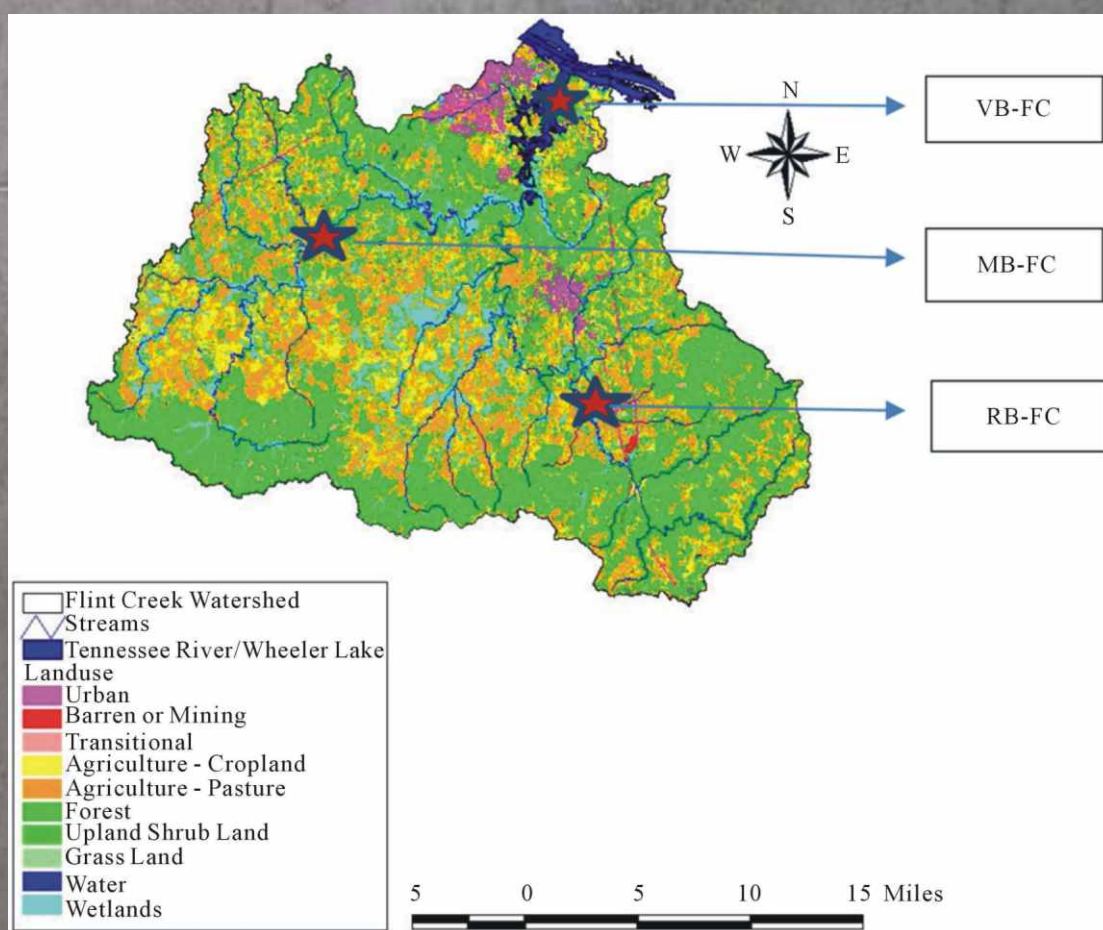


Computational Water, Energy, and Environmental Engineering



Journal Editorial Board

ISSN Print: 2168-1562 ISSN Online: 2168-1570

<http://www.scirp.org/journal/cweee>

Honorary Editor-in-Chief

Prof. Ahmad Qasaimeh

Jerash University, Jordan

Editorial Advisory Board

Prof. Marek Balazinski

École Polytechnique de Montréal, Canada

Prof. Maria Elektorowicz

Concordia University, Canada

Prof. Patrick Hettiaratchi

University of Calgary, Canada

Prof. Jasiuk Iwona

University of Illinois at Urbana-Champaign, USA

Editorial Board

Prof. Mohammad Raji Abdallah

AL-Huson University College (AL-Balqa Applied University), Jordan

Prof. Inteaz Alli

McGill University, Canada

Prof. Muhammad H. Al-u'datt

Jordan University of Science and Technology, Jordan

Prof. Radian G. Belu

Drexel University, USA

Prof. Hyeok Choi

University of Texas at Arlington, USA

Dr. Chua Kian Jon Ernest

National University of Singapore, Singapore

Prof. Ching-Hwa Ho

National Taiwan University of Science and Technology, Chinese Taipei

Dr. Xi Lu

School of Engineering and Applied Sciences Harvard University, USA

Prof. Kaveh Madani

University of Central Florida, USA

Prof. Josué Medellín-Azuara

University of California, USA

Prof. M. J. (Mike) Pasqualetti

Arizona State University, USA

Prof. Rehan Sadiq

The University of British Columbia, Canada

Prof. Ahmet Z. Sahin

King Fahd University of Petroleum and Minerals, Saudi Arabia

Dr. Kaimin Shih

The University of Hong Kong, China

Dr. S. Vasudevan

CSIR—Central Electrochemical Research Institute, India

Prof. Lihua Yang

Beihang University, China

Table of Contents

Volume 5 Number 1

January 2016

Runoff Harvesting and Storage for Rice Crop at Hamelmalo, Semiarid Region of Eritrea

R. P. Tripathi, W. Ogbazghi, S. Amlsom, S. Measho.....1

**Factor-Cluster Analysis and Effect of Particle Size on Total Recoverable Metal Concentration
in Sediments of the Lower Tennessee River Basin**

P. S. Okweye, K. G. Garner, A. S. Overton, E. M. Moss.....10

Computational Water, Energy, and Environmental Engineering (CWEEE)

Journal Information

SUBSCRIPTIONS

The *Computational Water, Energy, and Environmental Engineering* (Online at Scientific Research Publishing, www.SciRP.org) is published quarterly by Scientific Research Publishing, Inc., USA.

Subscription rates:

Print: \$59 per issue.

To subscribe, please contact Journals Subscriptions Department, E-mail: sub@scirp.org

SERVICES

Advertisements

Advertisement Sales Department, E-mail: service@scirp.org

Reprints (minimum quantity 100 copies)

Reprints Co-ordinator, Scientific Research Publishing, Inc., USA.

E-mail: sub@scirp.org

COPYRIGHT

COPYRIGHT AND REUSE RIGHTS FOR THE FRONT MATTER OF THE JOURNAL:

Copyright © 2016 by Scientific Research Publishing Inc.

This work is licensed under the Creative Commons Attribution International License (CC BY).

<http://creativecommons.org/licenses/by/4.0/>

COPYRIGHT FOR INDIVIDUAL PAPERS OF THE JOURNAL:

Copyright © 2016 by author(s) and Scientific Research Publishing Inc.

REUSE RIGHTS FOR INDIVIDUAL PAPERS:

Note: At SCIRP authors can choose between CC BY and CC BY-NC. Please consult each paper for its reuse rights.

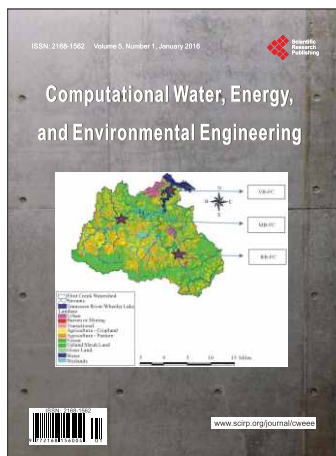
DISCLAIMER OF LIABILITY

Statements and opinions expressed in the articles and communications are those of the individual contributors and not the statements and opinion of Scientific Research Publishing, Inc. We assume no responsibility or liability for any damage or injury to persons or property arising out of the use of any materials, instructions, methods or ideas contained herein. We expressly disclaim any implied warranties of merchantability or fitness for a particular purpose. If expert assistance is required, the services of a competent professional person should be sought.

PRODUCTION INFORMATION

For manuscripts that have been accepted for publication, please contact:

E-mail: cweee@scirp.org



Call for Papers

Computational Water, Energy, and Environmental Engineering

ISSN Print: 2168-1562 ISSN Online: 2168-1570
<http://www.scirp.org/journal/cweee>

CWEE is an international refereed journal keen to innovation, creativity, and novelty in water, energy, and environmental engineering. This journal aims to attain the state-of-the-art technology in managing resources and energy. The subject of the journal entails solving problems and utilizing benefits of components in atmosphere, hydrosphere, lithosphere, and biosphere ecosystems.

Subject Coverage

The journal implies practical and computational processes in water, air, soil, and living species. In addition, it focuses on the recent developments of renewable energy such as solar energy, wind energy, hydro-energy, hybrid energy, geothermal energy, and bio-energy. The theme of the journal covers, but not limited to the following domains:

- Water, Energy, and Environmental Artificial Intelligence and Evolution Application
- Water, Energy, and Environmental Bio-Informatics Application
- Water, Energy, and Environmental Black Box Modeling Systems
- Water, Energy, and Environmental Control and Management
- Water, Energy, and Environmental Data Acquisition and Remote Sensing
- Water, Energy, and Environmental Decision Support Systems
- Water, Energy, and Environmental Expert Systems
- Water, Energy, and Environmental Forecasting
- Water, Energy, and Environmental Fuzzy Logic Application
- Water, Energy, and Environmental Genetic Algorithms Application
- Water, Energy, and Environmental Information Systems
- Water, Energy, and Environmental Knowledge Base and Data Hierarchy
- Water, Energy, and Environmental Modeling and Simulation
- Water, Energy, and Environmental Neural Networks Application
- Water, Energy, and Environmental Optimization
- Water, Energy, and Environmental Software and Visualization Application
- Water, Energy, and Environmental Statistics

We are also interested in: 1) Short reports—2-5 page papers where an author can either present an idea with theoretical background but has not yet completed the research needed for a complete paper or preliminary data; 2) Book reviews—Comments and critiques.

Notes for Intending Authors

Submitted papers should not have been previously published nor be currently under consideration for publication elsewhere. Paper submission will be handled electronically through the website. All papers are refereed through a peer review process. For more details about the submissions, please access the website.

Website and E-Mail

<http://www.scirp.org/journal/cweee>

E-mail: cweee@scirp.org

What is SCIRP?

Scientific Research Publishing (SCIRP) is one of the largest Open Access journal publishers. It is currently publishing more than 200 open access, online, peer-reviewed journals covering a wide range of academic disciplines. SCIRP serves the worldwide academic communities and contributes to the progress and application of science with its publication.

What is Open Access?

All original research papers published by SCIRP are made freely and permanently accessible online immediately upon publication. To be able to provide open access journals, SCIRP defrays operation costs from authors and subscription charges only for its printed version. Open access publishing allows an immediate, worldwide, barrier-free, open access to the full text of research papers, which is in the best interests of the scientific community.

- High visibility for maximum global exposure with open access publishing model
- Rigorous peer review of research papers
- Prompt faster publication with less cost
- Guaranteed targeted, multidisciplinary audience



**Scientific
Research
Publishing**

Website: <http://www.scirp.org>

Subscription: sub@scirp.org

Advertisement: service@scirp.org