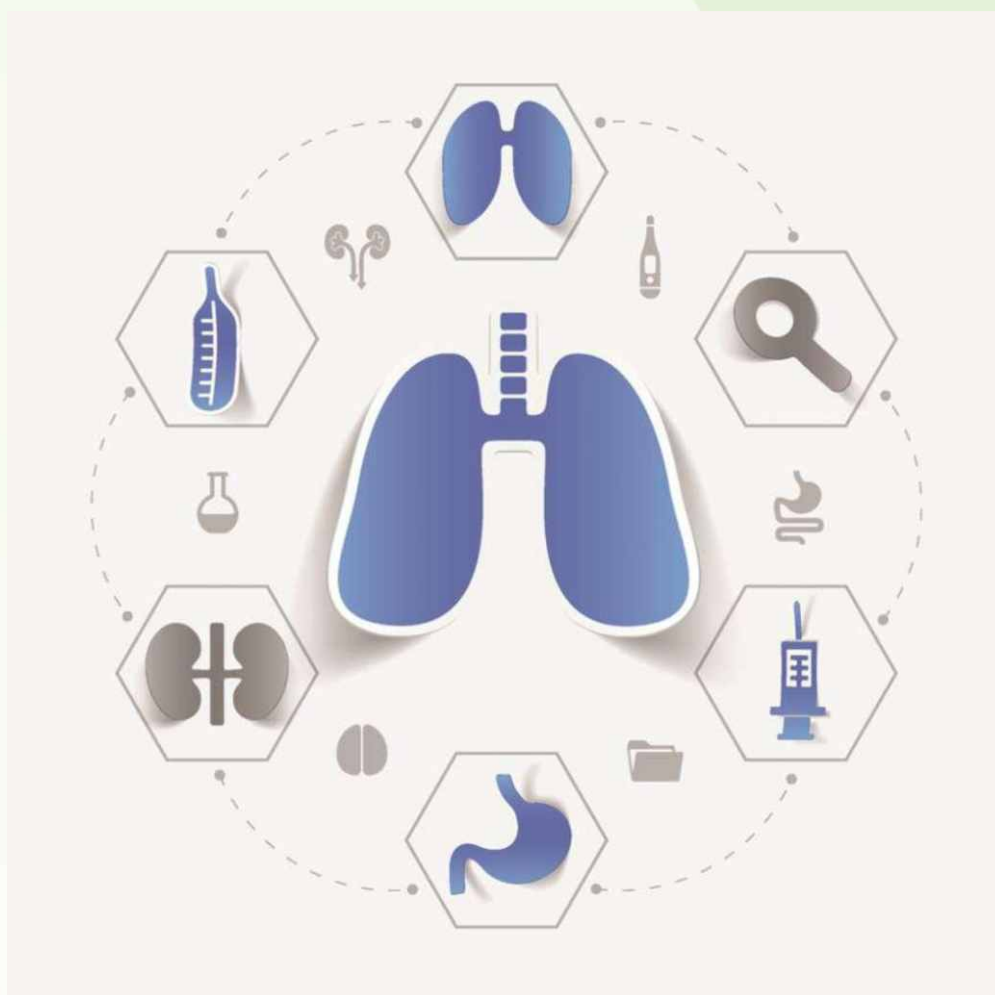


Open Journal of Endocrine and Metabolic Diseases



ISSN: 2165-7424



9 772165 742002 1 1

Journal Editorial Board

ISSN Print: 2165-7424 ISSN Online: 2165-7432

<http://www.scirp.org/journal/ojemd>

Editors-in-Chief

Prof. Aline Marcadenti	Federal University of Health Sciences of Porto Alegre, Brazil
Prof. Yuh-Min Song	Taichung Veterans General Hospital, Chinese Taipei

Editorial Board

Prof. Belinda R. Beck	Griffith University, Australia
Dr. Huan Cai	National Institute on Aging/National Institutes of Health, USA
Dr. Chong-Chi Chiu	Chi-Mei Medical Center, Chinese Taipei
Prof. Sang Ho Choi	Seoul National University, South Korea
Prof. Fernando Cordido	University of A Coruña, Spain
Dr. Zhongquan Dai	China Astronaut Research and Training Center, China
Prof. Daniel Y. C. Fung	Kansas State University, USA
Dr. Arumugam R. Jayakumar	University of Miami, USA
Dr. Li Ji	State University of New York, USA
Dr. Udaya M. Kabadi	VA Medical Center, USA
Prof. Wan Lee	Dongguk University School of Medicine, North Korea
Prof. Mohammad R. Movahed	University of Arizona College of Medicine, USA
Prof. Kei Nakajima	Josai University, Japan
Dr. Khue Vu Nguyen	University of California, USA
Prof. Lawrence C. Perlmutter	Rosalind Franklin University of Medicine, USA
Dr. Wen-Jun Shen	Stanford University, USA
Dr. Weiwei Song	Temple University School of Medicine, USA
Dr. Daniel Umpierre	Federal University of Rio Grande do Sul, Brazil

Table of Contents

Volume 5 Number 11

November 2015

***Low Dose* Irbesartan Has a Renoprotective Effect as High Dose Ramipril in
Diabetic Rats Treated with Insulin**

A. A. Alqasim, S. H. Hammadi, G. A. Bamagous, E. E. M. Noureldin, H. H. Madi.....149

Open Journal of Endocrine and Metabolic Diseases (OJEMD)

Journal Information

SUBSCRIPTIONS

Open Journal of Endocrine and Metabolic Diseases (Online at Scientific Research Publishing, www.SciRP.org) is published monthly by Scientific Research Publishing, Inc., USA.

Subscription rates:

Print: \$79 per issue.

To subscribe, please contact Journals Subscriptions Department, E-mail: sub@scirp.org

SERVICES

Advertisements

Advertisement Sales Department, E-mail: service@scirp.org

Reprints (minimum quantity 100 copies)

Reprints Co-ordinator, Scientific Research Publishing, Inc., USA.

E-mail: sub@scirp.org

COPYRIGHT

COPYRIGHT AND REUSE RIGHTS FOR THE FRONT MATTER OF THE JOURNAL:

Copyright © 2015 by Scientific Research Publishing Inc.

This work is licensed under the Creative Commons Attribution International License (CC BY).

<http://creativecommons.org/licenses/by/4.0/>

COPYRIGHT FOR INDIVIDUAL PAPERS OF THE JOURNAL:

Copyright © 2015 by author(s) and Scientific Research Publishing Inc.

REUSE RIGHTS FOR INDIVIDUAL PAPERS:

Note: At SCIRP authors can choose between CC BY and CC BY-NC. Please consult each paper for its reuse rights.

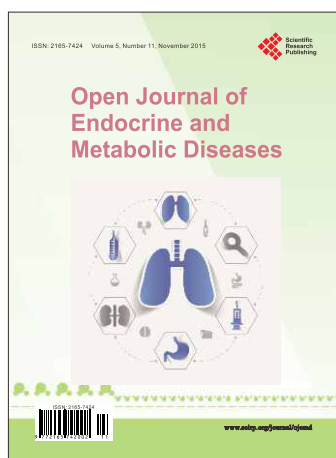
DISCLAIMER OF LIABILITY

Statements and opinions expressed in the articles and communications are those of the individual contributors and not the statements and opinion of Scientific Research Publishing, Inc. We assume no responsibility or liability for any damage or injury to persons or property arising out of the use of any materials, instructions, methods or ideas contained herein. We expressly disclaim any implied warranties of merchantability or fitness for a particular purpose. If expert assistance is required, the services of a competent professional person should be sought.

PRODUCTION INFORMATION

For manuscripts that have been accepted for publication, please contact:

E-mail: ojemd@scirp.org



Call for Papers

Open Journal of Endocrine and Metabolic Diseases

ISSN Print: 2165-7424 ISSN Online: 2165-7432
<http://www.scirp.org/journal/ojemd>

Open Journal of Endocrine and Metabolic Diseases (OJEMD) is an international journal dedicated to the latest advancement in endocrine and metabolic diseases. The goal of this journal is to provide a platform for scientists and academicians all over the world to promote, share, and discuss various new issues and developments in different areas of endocrine and metabolic diseases.

Editorial Board

Prof. Belinda R. Beck

Dr. Huan Cai

Dr. Chong-Chi Chiu

Prof. Sang Ho Choi

Prof. Fernando Cordido

Dr. Zhongquan Dai

Prof. Daniel Y. C. Fung

Dr. Arumugam R. Jayakumar

Dr. Li Ji

Dr. Udaya M. Kabadi

Prof. Wan Lee

Prof. Mohammad R. Movahed

Prof. Kei Nakajima

Dr. Khue Vu Nguyen

Prof. Lawrence C. Perlmutter

Dr. Wen-Jun Shen

Dr. Weiwei Song

Dr. Daniel Umpierre

Griffith University, Australia

National Institute on Aging/National Institutes of Health, USA

Chi-Mei Medical Center, Chinese Taipei

Seoul National University, South Korea

University of A Coruña, Spain

China Astronaut Research and Training Center, China

Kansas State University, USA

University of Miami, USA

State University of New York, USA

VA Medical Center, USA

Dongguk University School of Medicine, North Korea

University of Arizona College of Medicine, USA

Josai University, Japan

University of California, USA

Rosalind Franklin University of Medicine, USA

Stanford University, USA

Temple University School of Medicine, USA

Federal University of Rio Grande do Sul, Brazil

All manuscripts must be prepared in English, and are subject to a rigorous and fair peer-review process. Accepted papers will immediately appear online followed by printed hard copy. The journal publishes original papers including but not limited to the following fields:

- | | |
|---|---|
| <ul style="list-style-type: none"> • Bone and Mineral Metabolism • Cell Metabolism • Clinical Endocrinology • Clinical Nutrition and Metabolism • Dermato-Endocrinology • Diabetes Mellitus • Diabetes, Obesity and Metabolism • Diabetology and Metabolic Syndrome • Diseases of the Pancreas • Drug Metabolism & Toxicology • Endocrine & Metabolic Disorders • Endocrine Disorders | <ul style="list-style-type: none"> • Endocrine Pathology • Inherited Metabolic Disease • Metabolic Brain Disease • Metabolic Engineering • Metabolomics • Molecular and Cellular Endocrinology • Molecular Genetics and Metabolism • Neuroendocrinology • Nutrition, Metabolism and Cardiovascular Diseases • Pediatric Endocrinology • Psychoneuroendocrinology • Reproductive Biology and Endocrinology |
|---|---|

We are also interested in: 1) Short reports—2-5 page papers where an author can either present an idea with theoretical background but has not yet completed the research needed for a complete paper or preliminary data; 2) Book reviews—Comments and critiques.

Website and E-mail

<http://www.scirp.org/journal/ojemd>

E-mail: ojemd@scirp.org