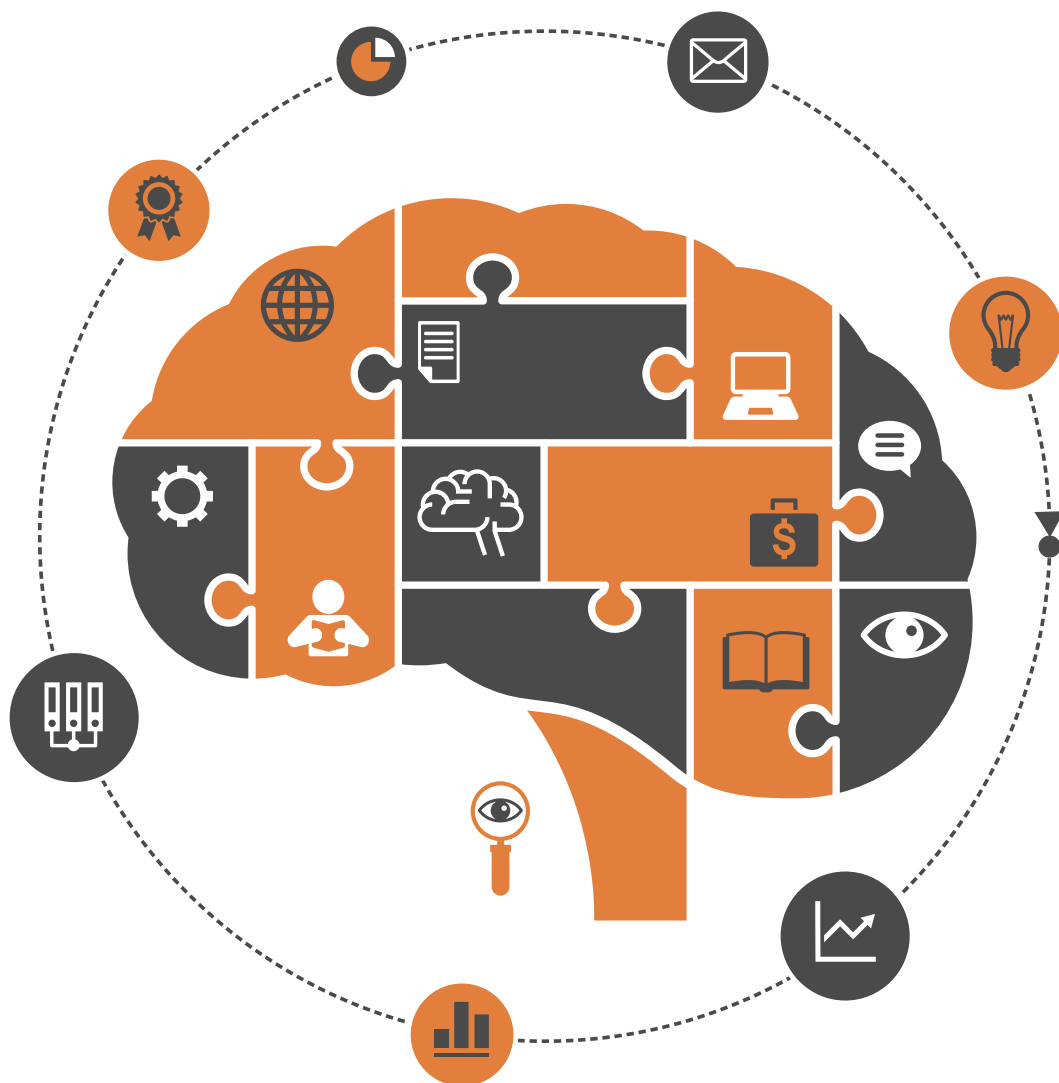


# Psychology

Special Issue on Adolescent Psychology



ISSN: 2152-7180



[www.scirp.org/journal/psych](http://www.scirp.org/journal/psych)

# Journal Editorial Board

ISSN Print: 2152-7180 ISSN Online: 2152-7199

<http://www.scirp.org/journal/psych>

---

## Editorial Board

<b>Dr. Ruggero Andrisano-Ruggieri</b>	University of Salerno, Italy
<b>Dr. Yoram Bar-Tal</b>	Tel-Aviv University, Israel
<b>Prof. Adital Ben-Ari</b>	University of Haifa, Israel
<b>Dr. Sefa Bulut</b>	Ibn Haldun University, Turkey
<b>Prof. Matthew C. Costello</b>	Indiana University South Bend, USA
<b>Dr. Jay R. Elliott</b>	Yale University, USA
<b>Dr. Thomas Vincent Frederick</b>	California Baptist University, USA
<b>Prof. Jay Friedenberg</b>	Manhattan College, USA
<b>Prof. George Kyriacou Georgiou</b>	University of Alberta, Canada
<b>Dr. David M. Goodman</b>	Harvard Medical School, USA
<b>Dr. Hong Jiao</b>	University of Maryland, USA
<b>Dr. Michelle Y. Kibby</b>	Southern Illinois University, USA
<b>Prof. Kenneth A. Kiewra</b>	University of Nebraska-Lincoln, USA
<b>Prof. Beth Kurtz-Costes</b>	University of North Carolina, USA
<b>Dr. Giovanni Laviola</b>	Italian National Institute of Health, Italy
<b>Prof. Yang Lee</b>	Gyeongsang National University, South Korea
<b>Dr. Katerina Maniadaki</b>	Technological Educational Institution, Greece
<b>Prof. Tim F. McLaughlin</b>	Gonzaga University, USA
<b>Dr. John T. Mitchell</b>	Duke University, USA
<b>Dr. Melodee Mograss</b>	McGill University, Canada
<b>Dr. Ora Nakash</b>	Interdisciplinary Center (IDC) Herzliya, Israel
<b>Dr. Raffaella Nori</b>	University of Bologna, Italy
<b>Dr. Jennifer Kim Plybon Penberthy</b>	University of Virginia School of Medicine, USA
<b>Dr. So-Jung Seo</b>	Kyung Hee University, South Korea
<b>Prof. Tuomo Antero Takala</b>	University of Jyväskylä, Finland
<b>Prof. Massimiliano Versace</b>	Boston University, USA
<b>Prof. Edda Weigand</b>	University of Münster, Germany
<b>Dr. Berney J. Wilkinson</b>	Webster International University, USA
<b>Dr. Patricia Gail Williams</b>	University of Louisville, USA
<b>Dr. Hui-Ching Wu</b>	National Taiwan University, Chinese Taipei
<b>Prof. Wengang Yin</b>	Chinese Academy of Sciences, China

# Table of Contents

**Volume 9    Number 13**

**December 2018**

## **Psychometric Analysis of the Ryff's Psychological Well-Being Scales in Students of Four Mexican Universities**

P. B. Nava, O. A. E. del Villar, G. M. G. Peña, National Network of Studies on Violence and Health.....2685

## **Assessment of Heart Rate Variability in Adolescents with Different Levels of Personal Anxiety in Physical and Mental Tests**

N. V. Efimova, I. V. Myl'nikova.....2709

## **News Consumption and Identity: The Case of Adolescent Girls Belonging to a Minority Group**

M. Alon-Tirosh, D. Hadar-Shoval, N. Marshi-Sakran.....2718

## **Factors Associated to Non-Attendance to Dental Care among Adolescents—Suggesting a Model—Analysis of “Life & Health—Young People” a Cross-Sectional Public Health Survey among Adolescents in Örebro County, Sweden**

A. Gustafsson, C. Persson, C. Källestål.....2731

## **Pessimism, Reflective Planning, Self-Handicapping, Health Behaviors and Depressed Mood in Taiwanese Young Adults**

W.-L. Chen, K.-N. Kao.....2752

## **Neuropsychological Performance of Adolescents with High and Low School Performance**

M. del Rosario Bonilla-Sánchez, G. G. A. García, M. A. G. Flores, E. V. R. Arroyo.....2768

## **The Influence of College Students' Psychological Capital on Study Engagement**

Z. Gong, Q. Liu, X. N. Jiao, M. D. Tao.....2782

# Psychology (PSYCH)

## Journal Information

### SUBSCRIPTIONS

The *Psychology* (Online at Scientific Research Publishing, [www.SciRP.org](http://www.SciRP.org)) is published monthly by Scientific Research Publishing, Inc., USA.

#### **Subscription rates:**

Print: \$89 per issue.

To subscribe, please contact Journals Subscriptions Department, E-mail: [sub@scirp.org](mailto:sub@scirp.org)

### SERVICES

#### **Advertisements**

Advertisement Sales Department, E-mail: [service@scirp.org](mailto:service@scirp.org)

#### **Reprints (minimum quantity 100 copies)**

Reprints Co-ordinator, Scientific Research Publishing, Inc., USA.

E-mail: [sub@scirp.org](mailto:sub@scirp.org)

### COPYRIGHT

#### **Copyright and reuse rights for the front matter of the journal:**

Copyright © 2018 by Scientific Research Publishing Inc.

This work is licensed under the Creative Commons Attribution International License (CC BY).

<http://creativecommons.org/licenses/by/4.0/>

#### **Copyright for individual papers of the journal:**

Copyright © 2018 by author(s) and Scientific Research Publishing Inc.

#### **Reuse rights for individual papers:**

Note: At SCIRP authors can choose between CC BY and CC BY-NC. Please consult each paper for its reuse rights.

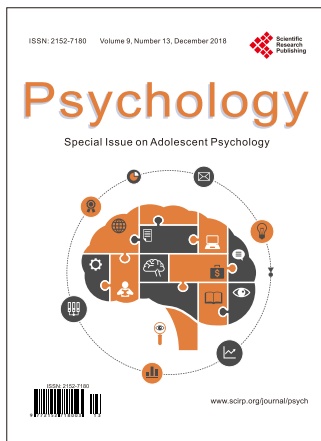
#### **Disclaimer of liability**

Statements and opinions expressed in the articles and communications are those of the individual contributors and not the statements and opinion of Scientific Research Publishing, Inc. We assume no responsibility or liability for any damage or injury to persons or property arising out of the use of any materials, instructions, methods or ideas contained herein. We expressly disclaim any implied warranties of merchantability or fitness for a particular purpose. If expert assistance is required, the services of a competent professional person should be sought.

### PRODUCTION INFORMATION

For manuscripts that have been accepted for publication, please contact:

E-mail: [psych@scirp.org](mailto:psych@scirp.org)



# Call for Papers

## Psychology (PSYCH)

ISSN Print: 2152-7180    ISSN Online: 2152-7199

<http://www.scirp.org/journal/psych>

---

PSYCH is an international refereed journal dedicated to the latest advancement of Psychology. The goal of this journal is to keep a record of the state-of-the-art research and promote the research work in these fast moving areas.

---

### Subject Coverage

This journal invites original research and review papers that address the following issues in Psychology. Topics of interest include, but are not limited to:

Behavioral Psychology	Military Psychology
Biological Basis of Behavior	National Psychology
Clinical Psychology	Neuropsychology
Cognitive Psychology	Political Psychology
Counseling Psychology	Professional Practice
Cultural Psychology	Psychological Assessment and Evaluation
Economic Psychology	Psychology of Art
Educational Psychology	Psychology of Religion
Engineering Psychology	Psychotherapy
Environmental Psychology	Safety Psychology
Ethics in Psychology	School Psychology
Family Psychology and Couples Psychology	Scientific Psychology
Forensic Psychology	Social Psychology
Gerontology	Sport Psychology
Health Psychology	Traffic Psychology
Intelligence Psychology	Work, Industrial and Organizational Psychology
Managerial and Leadership Psychology	Others

We are also interested in short papers (letters) that clearly address a specific problem, and short survey or position papers that sketch the results or problems on a specific topic. Authors of selected short papers would be invited to write a regular paper on the same topic for future issues of the **PSYCH**.

### Notes for Intending Authors

---

Submitted papers should not have been previously published nor be currently under consideration for publication elsewhere. Paper submission will be handled electronically through the website. All papers are refereed through a peer review process. For more details about the submissions, please access the website.

---

### Website and E-Mail

<http://www.scirp.org/journal/psych>

E-mail: [psych@scirp.org](mailto:psych@scirp.org)

