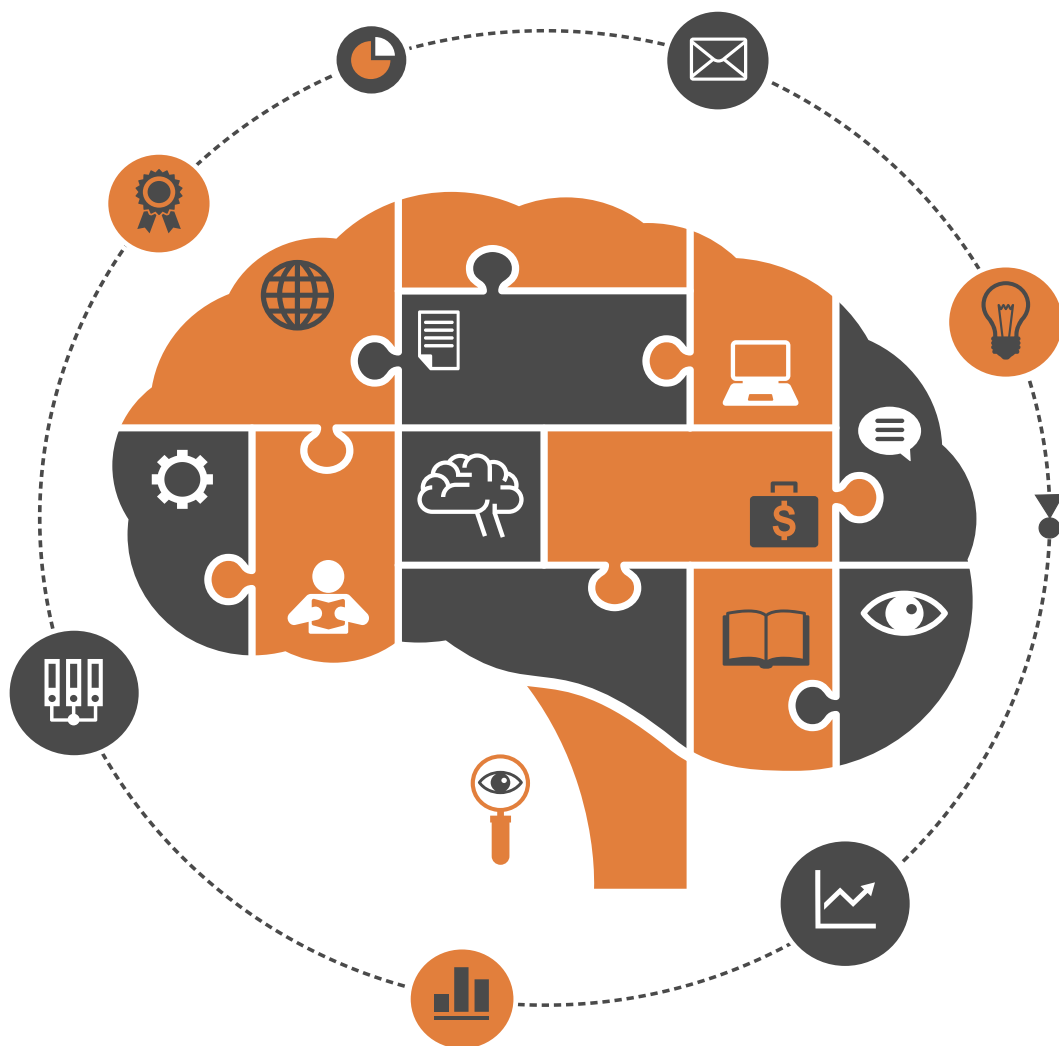


# Psychology



ISSN: 2152-7180



[www.scirp.org/journal/psych](http://www.scirp.org/journal/psych)

# Journal Editorial Board

ISSN Print: 2152-7180 ISSN Online: 2152-7199

<http://www.scirp.org/journal/psych>

---

## Editor-in-Chief

**Prof. Peter Walla**

University of Newcastle, Australia

## Editorial Board

**Dr. Ruggero Andrisano-Ruggieri**

University of Salerno, Italy

**Dr. Yoram Bar-Tal**

Tel-Aviv University, Israel

**Prof. Adital Ben-Ari**

University of Haifa, Israel

**Dr. Sefa Bulut**

Abant Izzet Baysal University, Turkey

**Prof. Matthew C. Costello**

Indiana University South Bend, USA

**Dr. Jay R. Elliott**

Yale University, USA

**Dr. Thomas Vincent Frederick**

California Baptist University, USA

**Prof. Jay Friedenberg**

Manhattan College, USA

**Dr. George Kyriacou Georgiou**

University of Alberta, Canada

**Dr. David M. Goodman**

Harvard Medical School, USA

**Dr. Hong Jiao**

University of Maryland, USA

**Dr. Michelle Y. Kibby**

Southern Illinois University, USA

**Prof. Kenneth A. Kiewra**

University of Nebraska-Lincoln, USA

**Prof. Beth Kurtz-Costes**

University of North Carolina, USA

**Dr. Giovanni Laviola**

Italian National Institute of Health, Italy

**Dr. Katerina Maniadaki**

Technological Educational Institution, Greece

**Prof. Tim F. McLaughlin**

Gonzaga University, USA

**Dr. John T. Mitchell**

Duke University, USA

**Dr. Melodee Mograss**

McGill University, Canada

**Dr. Ora Nakash**

Interdisciplinary Center (IDC) Herzliya, Israel

**Dr. Raffaella Nori**

University of Bologna, Italy

**Dr. Jennifer Kim Plybon Penberthy**

University of Virginia School of Medicine, USA

**Dr. So-Jung Seo**

Kyung Hee University, South Korea

**Prof. Tuomo Antero Takala**

University of Jyväskylä, Finland

**Dr. Massimiliano Versace**

Boston University, USA

**Prof. Edda Weigand**

University of Münster, Germany

**Dr. Berney J. Wilkinson**

Webster International University, USA

**Dr. Patricia Gail Williams**

University of Louisville, USA

**Dr. Hui-Ching Wu**

National Taiwan University, Chinese Taipei

**Dr. Wengang Yin**

Chinese Academy of Sciences, China

# Table of Contents

**Volume 7    Number 14**

**December 2016**

## **Standardization of the Subjective Happiness Scale (SHS) in a Greek Sample**

E. Karakasidou, C. Pezirkianidis, A. Stalikas, M. Galanakis.....1753

## **Combining Individual and Group Counselling Sessions in a Smoking Cessation Intervention**

V. Zisi, S. Gratsani, D. Leontari, Y. Theodorakis.....1766

## **Functional Judgment of Young Mexican Heterosexuals' Judgment towards Gay, Lesbian and Heterosexual Adoption**

K. A. Garza-Figueroa, E. O. Lopez-Ramirez, M. G. Villarreal-Treviño,  
G. E. Morales-Martinez, Y. N. Mezquita-Hoyos.....1785

## **Comparative Effectiveness of Life Skills Training, Voluntary Service Work and Homeopathic Treatment on Individuals Self-Esteem**

M. Bagherian, A. K. Mojembari, A. Borjali, M. Hakami.....1796

## **Dysfunctional Attitudes and Anxiety Sensitivity in the Manifestation and First Onset of Social Anxiety Disorder versus Specific Phobia and Healthy: A Prospective Longitudinal Study**

M. Rudaz, E. S. Becker, J. Margraf, T. Ledermann, A. H. Meyer, M. G. Craske.....1810

## **Identification of Students at Risk for Attention Deficit Disorder with Hyperactivity Using the Response to Intervention Model (RTI)**

G. D. Germano, S. A. Capellini.....1824

## **Self-Efficacy in Computer-Based Learning Environments: A Bibliometric Analysis**

N. Valencia-Vallejo, O. López-Vargas, L. Sanabria-Rodríguez.....1839

## **Coping Strategies and Perceived Support in Adolescents and Young Adults: Predictive Model of Self-Reported Cognitive and Mood Problems**

M. Tremolada, S. Bonichini, L. Taverna.....1858

## **Mental Health Problems among Korean American Adolescents**

M. Kim, J.-L. Chen, S. Kools, S. Weiss.....1872

## **Love Is Not an Emotion**

E. Burunat.....1883

# **Math Anxiety Differentially Affects Boys' and Girls' Arithmetic, Reading and Fluid Intelligence Skills in Fifth Graders**

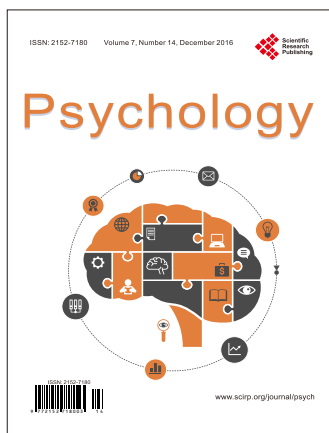
T. M. J. Schleepen, H. I. Van Mier.....1911

# **Association of Socioeconomic Factors to Domestic Violence and Murder of Women: The Case of Yucatán, México**

Y. O. Peña.....1921

# **Mental Health and Life Events of Overseas Children Left-Behind in China**

S. Y. Zhao, C. J. Liao.....1934



**Call for Papers**

# Psychology (PSYCH)

ISSN Print: 2152-7180 ISSN Online: 2152-7199

<http://www.scirp.org/journal/psych>

PSYCH is an international refereed journal dedicated to the latest advancement of Psychology. The goal of this journal is to keep a record of the state-of-the-art research and promote the research work in these fast moving areas.

## Subject Coverage

This journal invites original research and review papers that address the following issues in Psychology. Topics of interest include, but are not limited to:

Behavioral Psychology	Military Psychology
Biological Basis of Behavior	National Psychology
Clinical Psychology	Neuropsychology
Cognitive Psychology	Political Psychology
Counseling Psychology	Professional Practice
Cultural Psychology	Psychological Assessment and Evaluation
Economic Psychology	Psychology of Art
Educational Psychology	Psychology of Religion
Engineering Psychology	Psychotherapy
Environmental Psychology	Safety Psychology
Ethics in Psychology	School Psychology
Family Psychology and Couples Psychology	Scientific Psychology
Forensic Psychology	Social Psychology
Gerontology	Sport Psychology
Health Psychology	Traffic Psychology
Intelligence Psychology	Work, Industrial and Organizational Psychology
Managerial and Leadership Psychology	Others

We are also interested in short papers (letters) that clearly address a specific problem, and short survey or position papers that sketch the results or problems on a specific topic. Authors of selected short papers would be invited to write a regular paper on the same topic for future issues of the **PSYCH**.

## Notes for Intending Authors

Submitted papers should not have been previously published nor be currently under consideration for publication elsewhere. Paper submission will be handled electronically through the website. All papers are refereed through a peer review process. For more details about the submissions, please access the website.

## Website and E-Mail

<http://www.scirp.org/journal/psych>

E-mail: [psych@scirp.org](mailto:psych@scirp.org)

## What is SCIRP?

Scientific Research Publishing (SCIRP) is one of the largest Open Access journal publishers. It is currently publishing more than 200 open access, online, peer-reviewed journals covering a wide range of academic disciplines. SCIRP serves the worldwide academic communities and contributes to the progress and application of science with its publication.

## What is Open Access?

All original research papers published by SCIRP are made freely and permanently accessible online immediately upon publication. To be able to provide open access journals, SCIRP defrays operation costs from authors and subscription charges only for its printed version. Open access publishing allows an immediate, worldwide, barrier-free, open access to the full text of research papers, which is in the best interests of the scientific community.

- High visibility for maximum global exposure with open access publishing model
- Rigorous peer review of research papers
- Prompt faster publication with less cost
- Guaranteed targeted, multidisciplinary audience



**Website: <http://www.scirp.org>**

**Subscription: [sub@scirp.org](mailto:sub@scirp.org)**

**Advertisement: [service@scirp.org](mailto:service@scirp.org)**