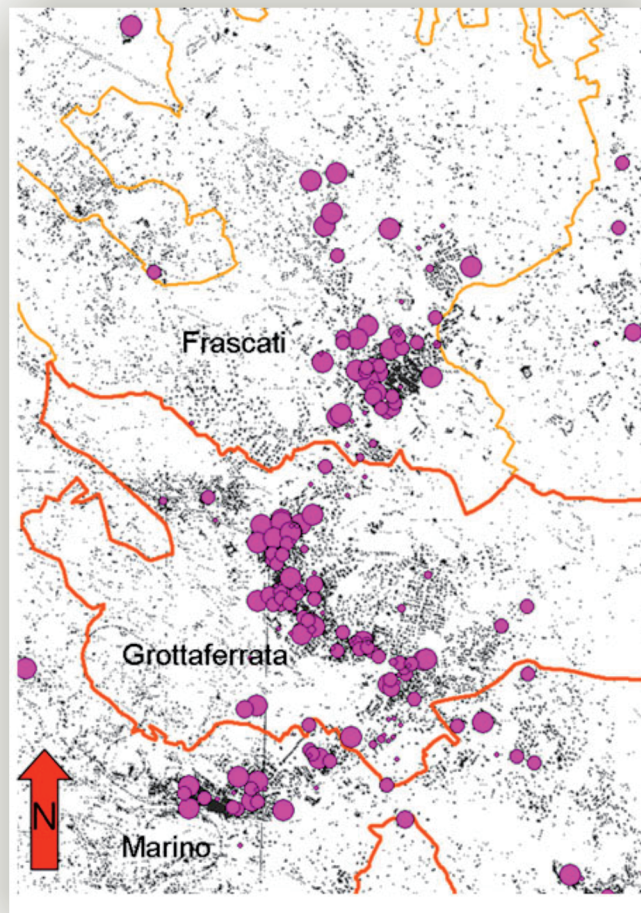




Journal of Geographic Information System

Editor-in-Chief: Prof. Jordi Martí-Henneberg



ISSN: 2151-1950



Journal Editorial Board

ISSN: 2151-1950 (Print) ISSN: 2151-1969 (Online)

<http://www.scirp.org/journal/jgis>

Editor-in-Chief

Prof. Jordi Martí-Henneberg University of Lleida, Spain

Associate Editor-in-Chief

Prof. Francisco J. Tapiador University of Castilla-La Mancha (UCLM), Spain

Editorial Board

Dr. Alia I. Abdelmoty	Cardiff University, UK
Prof. Carlos Marcelo Di Bella	Instituto de Clima y Agua CIRN-INTA Castelar, Argentina
Prof. Christophe Claramunt	Naval Academy Research Institute, France
Prof. Weihong Cui	International Europe and Asia Academy of Sciences, China
Prof. Fuchu Dai	Chinese Academy of Sciences, China
Prof. Anrong Dang	Tsinghua University, China
Dr. Hossein Ghadiri	Griffith University, Australia
Prof. Shuanggen Jin	Shanghai Astronomical Observatory, China
Dr. Saro Lee	Korea Institute of Geoscience and Mineral Resources, South Korea
Dr. Xiang Li	East China Normal University, China
Prof. Hervé Martin	Joseph Fourier University, France
Prof. Mainguenaud Michel	Institut National des Sciences Appliquées, France
Dr. Saied Pirasteh	University of Waterloo, Canada
Prof. Biswajeet Pradhan	Dresden University of Technology, Germany
Dr. Michael D. Proctor	University of Central Florida, USA
Dr. Xiaosheng Qin	Nanyang Technological University, Singapore
Prof. Shih-Lung Shaw	University of Tennessee, USA
Dr. Eddy Lynn Usery	Center of Excellence for Geospatial Information Science, USA
Dr. Herna Viktor	University of Ottawa, Canada
Prof. Jianhua Xu	East China Normal University, China
Prof. Xiaohuan Yang	Chinese Academy of Sciences, China
Prof. Axing Zhu	University of Wisconsin, USA
Dr. Liangfeng Zhu	East China Normal University, China

TABLE OF CONTENTS

Volume 4 Number 6

December 2012

Land Use and Land Cover Changes of West Tahta Region, Sohag Governorate, Upper Egypt	
I. Esam, F. Abdalla, N. Erich.....	483
Traffic Fluxes and Urban Congestion: A Simple Approach with the <i>Attractors</i>' Method	
E. Loret, G. Gullotta, M. Fea, F. Sarti.....	494
Proposal for the Introduction of the Spatial Perspective in the Application of Global Sensitivity Analysis	
W. Plata-Rocha, M. Gómez-Delgado, J. Bosque-Sendra.....	503
The Relevance of Web Mapping Infrastructures in a Web Portal for Desktop and Mobile Devices: A Case Study	
K. Behncke, M. Ehlers.....	514
Spatio-Temporal Land Cover Dynamics in Open Cast Coal Mine Area of Singrauli, M.P., India	
I. Khan, A. Javed.....	521
Customized Online Aggregation & Summarization Tool for Environmental Rasters (COASTER)	
D. J. Weiss, K. Gibson, C. Sojka, J. W. Sheldon, R. L. Crabtree.....	530
Validation of CA-Markov for Simulation of Land Use and Cover Change in the Langat Basin, Malaysia	
H. Memarian, S. K. Balasundram, J. B. Talib, C. T. B. Sung, A. M. Sood, K. Abbaspour.....	542
Urban Growth Prediction: A Review of Computational Models and Human Perceptions	
D. Triantakoustantis, G. Mountrakis.....	555
Integrated Approach of Universal Soil Loss Equation (USLE) and Geographical Information System (GIS) for Soil Loss Risk Assessment in Upper South Koel Basin, Jharkhand	
R. Parveen, U. Kumar.....	588
Cloud Computing as an Innovation in GIS & SDI: Methodologies, Services, Issues and Deployment Techniques	
M. Naghavi.....	597
Black Spot Determination of Traffic Accident Locations and Its Spatial Association Characteristic Analysis Based on GIS	
H. Y. Chen.....	608

The figure on the front cover is from the article published in *Journal of Geographic Information System*, 2012, Vol. 4, No. 6, pp. 494-502 by Emanuele Loret, Gaia Gullotta, Maurizio Fea and Francesco Sarti.

Journal of Geographic Information System (JGIS)

Journal Information

SUBSCRIPTIONS

The *Journal of Geographic Information System* (Online at Scientific Research Publishing, www.SciRP.org) is published bimonthly by Scientific Research Publishing, Inc., USA.

Subscription rates:

Print: \$59 per issue.

To subscribe, please contact Journals Subscriptions Department, E-mail: sub@scirp.org

SERVICES

Advertisements

Advertisement Sales Department, E-mail: service@scirp.org

Reprints (minimum quantity 100 copies)

Reprints Co-ordinator, Scientific Research Publishing, Inc., USA.

E-mail: sub@scirp.org

COPYRIGHT

Copyright©2012 Scientific Research Publishing, Inc.

All Rights Reserved. No part of this publication may be reproduced, stored in a retrieval system, or transmitted, in any form or by any means, electronic, mechanical, photocopying, recording, scanning or otherwise, except as described below, without the permission in writing of the Publisher.

Copying of articles is not permitted except for personal and internal use, to the extent permitted by national copyright law, or under the terms of a license issued by the national Reproduction Rights Organization.

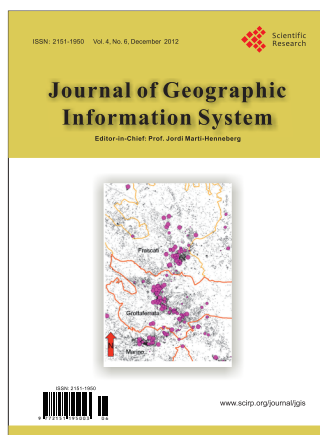
Requests for permission for other kinds of copying, such as copying for general distribution, for advertising or promotional purposes, for creating new collective works or for resale, and other enquiries should be addressed to the Publisher.

Statements and opinions expressed in the articles and communications are those of the individual contributors and not the statements and opinion of Scientific Research Publishing, Inc. We assumes no responsibility or liability for any damage or injury to persons or property arising out of the use of any materials, instructions, methods or ideas contained herein. We expressly disclaim any implied warranties of merchantability or fitness for a particular purpose. If expert assistance is required, the services of a competent professional person should be sought.

PRODUCTION INFORMATION

For manuscripts that have been accepted for publication, please contact:

E-mail: jgis@scirp.org



Call for Papers

Journal of Geographic Information System (JGIS)

ISSN 2151-1950 (Print) ISSN 2151-1969 (Online)

<http://www.scirp.org/journal/jgis/>

JGIS is an international refereed journal dedicated to the latest advancement of Geographic Information System. The goal of this journal is to keep a record of the state-of-the-art research and promote the research work in these fast moving areas. The journal publishes the highest quality, original papers included but not limited to the fields:

Editor-in-Chief

Prof. Jordi Martí-Henneberg

University of Lleida, Spain

Subject Coverage

- Cartography and Geodesy
- Computational Geometry
- Computer Vision Applications in GIS
- Distributed, Parallel, and GPU Algorithms for GIS
- Earth Observation
- Environmental Geomatics—GIS, RS and Other Spatial Information Technologies
- Geographical Analysis for Urban and Regional Development
- Geographic Information Retrieval
- GIS and Cloud Computing
- GIS and High Performance Computing
- Human Computer Interaction and Visualization
- Image and Video Understanding
- Location-Based Services
- Location Privacy, Data Sharing and Security
- Performance Evaluation
- Photogrammetry
- Similarity Searching
- Social Networks and Volunteer Geographic
- Spatial Analysis and Integration
- Spatial and Spatio-Temporal Information Acquisition
- Spatial Data Mining and Knowledge Discovery
- Spatial Data Quality and Uncertainty
- Spatial Data Structures and Algorithms
- Spatial Data Warehousing, OLAP, and Decision Support
- Spatial Information and Society
- Spatial Modeling and Reasoning
- Spatial Query Processing and Optimization
- Spatial Semantic Web
- Spatio-Temporal Data Handling
- Spatio-Temporal Sensor Networks
- Spatio-Temporal Stream Processing
- Spatio-Textual Searching
- Standardization and Interoperability for GIS
- Storage and Indexing
- Systems, Architectures and Middleware for GIS
- Traffic Telematics
- Transportation
- Visual Languages and Querying
- Wireless, Web, and Real-Time Applications

We are also interested in short papers (letters) that clearly address a specific problem, and short survey or position papers that sketch the results or problems on a specific topic. Authors of selected short papers would be invited to write a regular paper on the same topic for future issues of the **JGIS**.

Notes for Intending Authors

Submitted papers should not have been previously published nor be currently under consideration for publication elsewhere. Paper submission will be handled electronically through the website. All papers are refereed through a peer review process. For more details about the submissions, please access the website.

Website and E-Mail

<http://www.scirp.org/journal/jgis>

E-mail: jgis@scirp.org