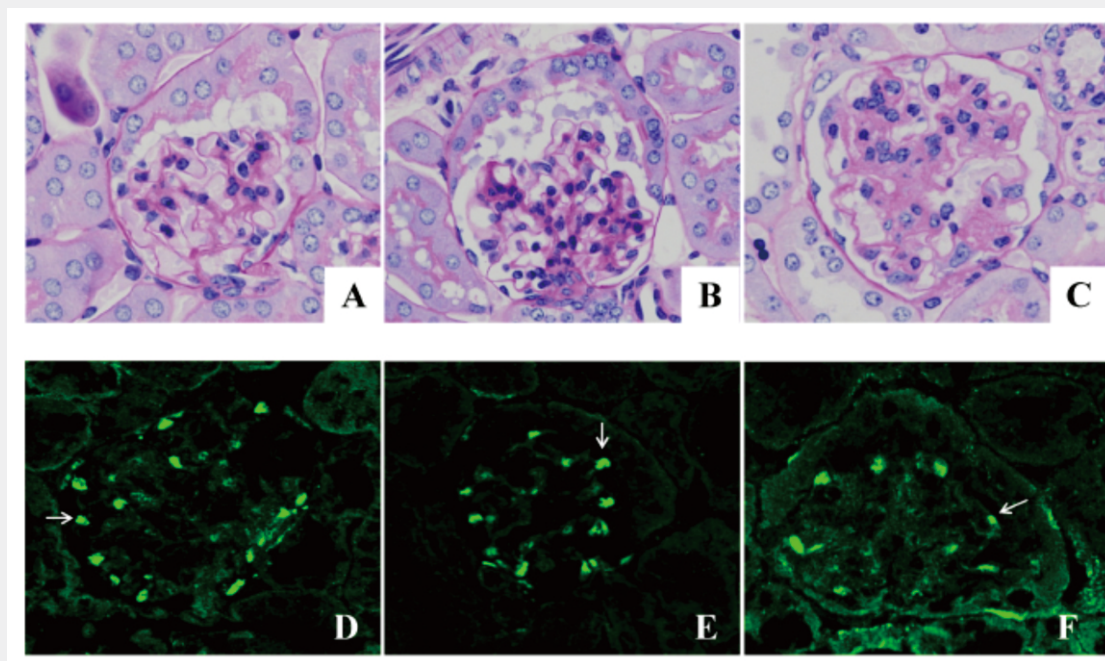


# Journal of Diabetes Mellitus



# Journal Editorial Board

ISSN Print: 2160-5831 ISSN Online: 2160-5858

<http://www.scirp.org/journal/jdm/>

---

## Editor-in-Chief

**Prof. Sharma S. Prabhakar**

Texas Tech University Health Sciences Center, USA

## Editorial Board

**Dr. Intekhab Ahmed**

Thomas Jefferson University, USA

**Prof. Bahram H. Arjmandi**

Florida State University, USA

**Prof. David A. Arnall**

East Tennessee State University, USA

**Dr. Vivek Bhalla**

Stanford University, USA

**Prof. Bertrand Cariou**

Nantes University Hospital, France

**Prof. Dmitry A. Chistyakov**

Pirogov Russian State Medical University, Russia

**Prof. Fernando Cordido**

University of A Coruña, Spain

**Prof. Franco Battista Ennio Folli**

University of Texas, USA

**Prof. Paul Albert Fournier**

The University of Western Australia, Australia

**Dr. Bruce H. Francis**

Novartis Pharmaceuticals Corporation, USA

**Dr. Xianxin Hua**

University of Pennsylvania, USA

**Dr. Hongyun Lu**

The Fifth Affiliated Hospital of Sun Yat-sen University, China

**Dr. Abbas Ali Mansour**

Basrah College of Medicine, Iraq

**Dr. Felicia V. Nowak**

Ohio University, USA

**Prof. Kazushi Okamoto**

Aichi Prefectural College of Nursing & Health, Japan

**Prof. Fernando Ovalle**

University of Alabama, USA

**Prof. Teresa Quattrin**

State University of New York, USA

**Prof. Satyan M. Rajbhandari**

Chorley & South Ribble Hospital, UK

**Dr. Eduardo J. Spinedi**

Neuroendocrine Unit, Argentina

**Dr. G. R. Sridhar**

Andhra University, India

**Dr. Abraham Thomas**

Henry Ford Hospital, USA

# TABLE OF CONTENTS

Volume 2, Number 3, August 2012

<b>Response of low active GLP-1 like substances to test meal in obese Japanese patients with type 2 diabetes mellitus compared with obese controls with normal glucose tolerance</b>	
K. Kamoi, N. Ohara, T. Ikarashi, Y. Shinozaki, K. Furukawa, H. Sasaki.....	265
<b>Atherogenic lipids profile relates to postprandial hyperglycemia and hyperinsulinemia due to whole body insulin resistance in prediabetic subjects</b>	
Y. Miyazaki, M. Furugen, H. Akasaka, S. Saitoh, T. Miura.....	272
<b>Pharmacist intervention in home care program for diabetes patients</b>	
S. W. Gillani, S. A. S. Sulaiman, M. Baig, Y. O. Sari, S. M. S. Ghadzi, S. N. Haroon, N. H. Md Hanafiah.....	279
<b>Self monitoring of blood glucose and its association with glycaemic control and lipid levels in type 2 diabetic patients aged 40 - 75 in Trinidad and Tobago</b>	
B. S. Nayak, K. Gowrie, R. Romano, C. Spencer, D. Noel, H. Bissoon, I. Dipatene, N. Mahabir, R. Ragbir, S. Xavier.....	294
<b>Reliability and validity of the Arabic version of the PedsQL™ 4.0 generic ore scales and PedsQL™ 3.0 diabetes module</b>	
M. Abdul-Rasoul, F. AlOtaibi, M. AlMahdi, H. AlKandari.....	301
<b>Lifestyle intervention by group-based rehabilitation versus individual counseling in type 2 diabetes: 1-year follow-up of the Copenhagen type 2 diabetes rehabilitation project</b>	
E. S. Vadstrup, A. Frølich, H. Perrild, E. Borg, M. Røder.....	308
<b>Effects of Metformin and Pioglitazone on impaired glucose tolerance patients—An open level prospective study</b>	
G. Mazumdar, I. Chakraborty, B. Swaika.....	316
<b>Prevalence of diabetes mellitus in a group of women attending “August meeting” at Naze South East Nigeria</b>	
C. U. Osuji, B. A. Nzerem, C. E. Dioka, S. C. Meludu, E. I. Onwubuya.....	321
<b>Low serum adiponectin level is predictor of arterial stiffness in new onset diabetes after renal transplantation</b>	
K. Nishimura, T. Hirai, S. Nakazawa, K. Yamanaka, H. Kishikawa, Y. Ichikawa.....	327
<b>Metabolic syndrome and its individual components among people with type 2 diabetes: Prevalence, gender differences and its association with ischemic heart disease</b>	
A. K. Khuwaja, F. N. Ali, I. Naqvi, R. Bux, A. Jabbar, R. H. Dhanani.....	332
<b>Sitagliptin improves vascular endothelial function in Japanese type 2 diabetes patients without cardiovascular disease</b>	
K. Suzuki, K. Watanabe, T. Suzuki, M. Ouchi, S. Futami-Suda, Y. Igari, H. Nakano, K. Oba.....	338
<b>Podocyte loss and albuminuria of KK-A<sup>y</sup> mouse: A spontaneous animal model for human type 2 diabetic nephropathy</b>	
Y. Ishikawa, T. Ito, M. Tanimoto, S. Hagiwara, M. Furukawa, S. Yamaguchi, K. Omote, K. Asanuma, T. Gohda, Y. Shimizu, K. Funabiki, S. Horikoshi, Y. Tomino.....	346
<b>Inhibition of renin activity by aliskiren ameliorates diabetic nephropathy in type 1 diabetes mouse model</b>	
Y. Zhang, Y. L. Wang, Y. Z. Chen, D. K. Deb, T. Sun, Q. Zhao, Y. C. Li.....	353

The figure on the front cover is from the article published in Journal of Diabetes Mellitus, 2012, Vol. 2, No. 3, pp. 346-352 by Yuji Ishikawa, *et al.*

# **Journal of Diabetes Mellitus (JDM)**

## **Journal Information**

### **SUBSCRIPTIONS**

The *Journal of Diabetes Mellitus* (Online at Scientific Research Publishing, [www.SciRP.org](http://www.SciRP.org)) is published quarterly by Scientific Research Publishing, Inc., USA.

#### **Subscription rates:**

Print: \$39 per issue.

To subscribe, please contact Journals Subscriptions Department, E-mail: [sub@scirp.org](mailto:sub@scirp.org)

### **SERVICES**

#### **Advertisements**

Advertisement Sales Department, E-mail: [service@scirp.org](mailto:service@scirp.org)

#### **Reprints (minimum quantity 100 copies)**

Reprints Co-ordinator, Scientific Research Publishing, Inc., USA.

E-mail: [sub@scirp.org](mailto:sub@scirp.org)

### **COPYRIGHT**

Copyright©2012 Scientific Research Publishing, Inc.

All Rights Reserved. No part of this publication may be reproduced, stored in a retrieval system, or transmitted, in any form or by any means, electronic, mechanical, photocopying, recording, scanning or otherwise, except as described below, without the permission in writing of the Publisher.

Copying of articles is not permitted except for personal and internal use, to the extent permitted by national copyright law, or under the terms of a license issued by the national Reproduction Rights Organization.

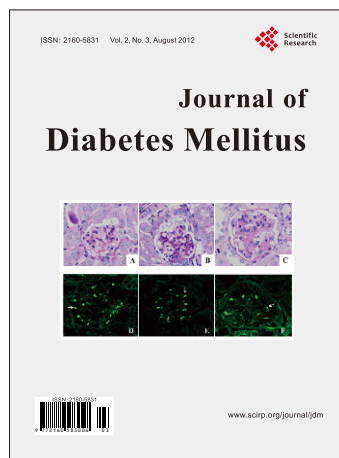
Requests for permission for other kinds of copying, such as copying for general distribution, for advertising or promotional purposes, for creating new collective works or for resale, and other enquiries should be addressed to the Publisher.

Statements and opinions expressed in the articles and communications are those of the individual contributors and not the statements and opinion of Scientific Research Publishing, Inc. We assume no responsibility or liability for any damage or injury to persons or property arising out of the use of any materials, instructions, methods or ideas contained herein. We expressly disclaim any implied warranties of merchantability or fitness for a particular purpose. If expert assistance is required, the services of a competent professional person should be sought.

### **PRODUCTION INFORMATION**

For manuscripts that have been accepted for publication, please contact:

E-mail: [jdm@scirp.org](mailto:jdm@scirp.org)



# Journal of Diabetes Mellitus

ISSN: 2160-5831 (Print) ISSN: 2160-5858 (Online)

<http://www.scirp.org/journal/jdm>

JDM is an international journal dedicated to the current developments of Diabetes Mellitus, the broad scope will also include significant research in the fields of pathology and therapeutic innovations of diabetes itself, both type I and II.

## Editor-in-Chief

**Prof. Sharma S. Prabhakar**

Texas Tech University Health Sciences Center, USA

## Editorial Board

Dr. Intekhab Ahmed  
Prof. Bahram H. Arjmandi  
Prof. David A. Arnall  
Dr. Vivek Bhalla  
Prof. Bertrand Cariou  
Prof. Dmitry A. Chistyakov  
Prof. Fernando Cordido

Prof. Franco Battista Ennio Folli  
Prof. Paul Albert Fournier  
Dr. Bruce H. Francis  
Dr. Xianxin Hua  
Dr. Hongyun Lu  
Dr. Abbas Ali Mansour  
Dr. Felicia V. Nowak

Prof. Kazushi Okamoto  
Prof. Fernando Ovalle  
Prof. Teresa Quattrin  
Prof. Satyan M. Rajbhandari  
Dr. Eduardo J. Spinedi  
Dr. G. R. Sridhar  
Dr. Abraham Thomas

## Subject Coverage

All manuscripts submitted to JDM must be previously unpublished and may not be considered for publication elsewhere at any time during review period. Additionally, accepted ones will immediately appear online followed by printed in hard copy. The journal publishes original papers including but not limited to the following fields:

- Cardiovascular Diabetology
- Diabetes and Its Complications
- Diabetes and Metabolic Syndrome
- Diabetes and Metabolism
- Diabetes Care
- Diabetes Education
- Diabetes in Developing Countries
- Diabetes Nursing
- Diabetes, Obesity and Metabolism
- Diabetes Research and Clinical Practice
- Diabetes Therapy
- Diabetes & Vascular Disease
- Diabetic Medicine
- Pancreatic Islet Function and Intermediary Metabolism
- Pathogenesis of Diabetes
- Pediatric Diabetes
- Pharmacological Mechanisms of Drug and Hormone Action
- Primary Care Diabetes
- Therapies for Diabetic Complications

We are also interested in short papers (letters) that clearly address a specific problem, and short survey or position papers that sketch the results or problems on a specific topic. Authors of selected short papers would be invited to write a regular paper on the same topic for future issues of the *JDM*.

## Notes for Intending Authors

Submitted papers should not have been previously published nor be currently under consideration for publication elsewhere. Paper submission will be handled electronically through the website. All papers are refereed through a peer review process. Authors are responsible for having their papers checked for style and grammar prior to submission to JDM. For more details about the submissions, please access the website.

## Website and E-Mail

<http://www.scirp.org/journal/jdm>

E-mail: [jdm@scirp.org](mailto:jdm@scirp.org)