

Suitability of Groundwater from the Kherzet Youcef Lead-Zinc Deposit (North-Eastern Algeria) for Irrigation and Drinking Water Supply

Souhila Chedda*, Abdelhamid Haouchine

Geo-Environment Laboratory, Houari Boumediene University of Science and Technology, Algiers, Algeria

Email: *cheddadsouha@gmail.com

How to cite this paper: Chedda, S. and Haouchine, A. (2022) Suitability of Groundwater from the Kherzet Youcef Lead-Zinc Deposit (North-Eastern Algeria) for Irrigation and Drinking Water Supply. *Journal of Environmental Protection*, 13, 941-952. <https://doi.org/10.4236/jep.2022.1312059>

Received: August 27, 2022

Accepted: December 12, 2022

Published: December 15, 2022

Copyright © 2022 by author(s) and Scientific Research Publishing Inc. This work is licensed under the Creative Commons Attribution International License (CC BY 4.0).

<http://creativecommons.org/licenses/by/4.0/>



Open Access

Abstract

As part of the hydro geological study of the Kherzet Youcef deposit, a drilling battery was carried out. The objective of this achievement is the satisfaction of the water needs of the city of Ain Azel (drinking water supply, irrigation and industrial water supply) and even the transfer to other municipalities suffering by the lack of water and the resumption of mining activity at the deposit of Kherzet Youcef. This water table is located in carbonate formations of Paleo-Neogene age linked to lead-zinc mineralization. Knowledge of water quality and its suitability for human consumption is an obligation. These metals have adverse health effects. We used the results of Sonarem's analyses from 1973 to 1979. In addition, we carried out two analyses, during two years 2015-2016, on five boreholes. The parameters analyzed are major elements, physical parameters and trace metal elements (Zn, Pb and Fe). The analyses were done by ICP-AES. In our work, it has been shown that waste water is suitable for use in agriculture. For this we used the electrical conductivity at 25°C and those of the sodium adsorption ratio (SAR). For drinking water supply, monitoring the change in trace metal element (Zn, Pb and Fe) for two years has allowed us to conclude that groundwater in the groundwater table east of the Kherzet Youcef fault is generally acceptable. They are eligible by the quality standard set by Algerian regulations. However, they exceed the world health organization (WHO) standards, especially for lead. We recommend a revision of drinking water quality standards set by Algerian regulations, rigorous monitoring of TME content variation and water treatment before distribution.

Keywords

Trace Metal Element (TME), Quality Standard, Sodium Absorption Ratio

1. Introduction

In most parts of the world, groundwater is of paramount importance. Groundwater is generally cheaper and aquifers enjoy natural protection from anthropogenic pollution [1]. It is also a reliable source of supply and buffer against drought [1].

Despite this importance, groundwater quality can deteriorate due to many factors influencing its chemical composition and consequently its multiple uses. These factors include lithology, time of residence of water in contact with rocks, ambient temperature and pH, chemical composition of the aquifer, climatic conditions prevailing during formation, quantity of water available in the aquifer and its circulation rate [2].

In Algeria, water resources come from renewable and non-renewable surface and groundwater. The exploitation of these resources is very intense with the growing needs related to demographic growth and the accelerated development of economic activities, especially irrigated agriculture and industry [3].

Abandoned mines have caused, and continue to cause many environmental problems. The heavy metals from these mines are, for the most part, at high levels, and constitute a danger to public health when they manage to contaminate the waters. As a result, heavy metal water pollution in the vicinity of mines has often been reported in the literature [4]-[9].

For the Kherzet Youcef deposit, the volumes of exhalation are large. During the mining period, the mine water was used for the processing of Zn and Pb ore. Subsequently, the volumes of the drainage water are greater than the needs of the mine, a decision was made to use them for irrigation of almost 350 ha of agricultural land around the mine.

As part of the hydrogeological study of the Kherzet Youcef deposit, a drilling battery was carried out. A total of ten (10) initial boreholes of 20 l/s each are carried out. These waters are intended for the drinking water supply of the city of Ain Azel and even neighboring towns.

2. Material and Methods

2.1. Presentation of the Study Area

Orographically, the deposit is located within the limits of the Hodna mountain range on the northeastern flank of the Jebel Hadjar Labiod chain, culminating at 1371m. East of the deposit, there is a vast inter-mountainous depression, with gentle slopes towards Ain Azel (**Figure 1**).

The polymetallic deposit of Kherzet Youcef recognized since the beginning of the century by the exploitation of the ore of Zn and Pb. This deposit is associated with a Barremian age carbonate layer. Since the beginning of operation, several

water flows, at different amplities, have been recorded [10].

Based on available data at the mine level, recorded outflows as a function of operating depth are recorded in **Table 1**.

Between The reserves between levels 835 and 775 (800,000 tons) were extracted from 1979 to 1987 by the chamber and pillar method.

The year 1982 and 1990 the water flows evolved as shown in the graph of **Figure 2**.

The arrivals observed at the bottom of the Kherzet Youcef mine during the period from 1982 to 1990, gradually evolved from 298 m³/h to almost 1000 m³/h

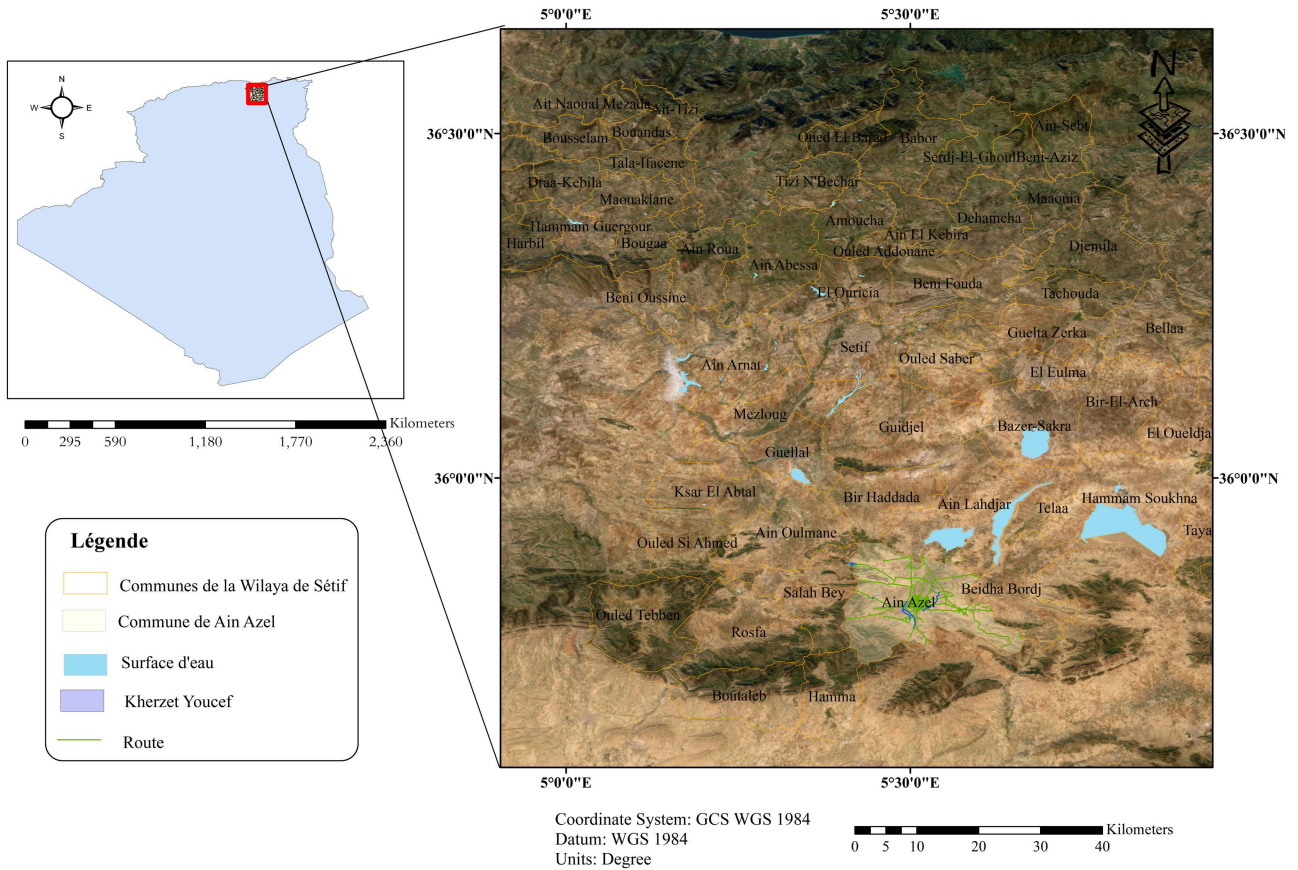


Figure 1. Geographic location of the study area.

Table 1. Water intake by operating depth (1965-1979).

Nature of work	Depth (m)	Water flow rate (l/s)
Digging the ventilation shaft I	87 m	8 à 10 l/s
	90 m	5 l/s
Digging the extraction shaft III	90 m	11 l/s
	98 m	250 passes à 97 l/s
Operating level 835	157 m	5 sources avec une débit moyen 11 l/s
Operating level 775	217 m	6 sources avec un débit moyen de 3.3 l/s

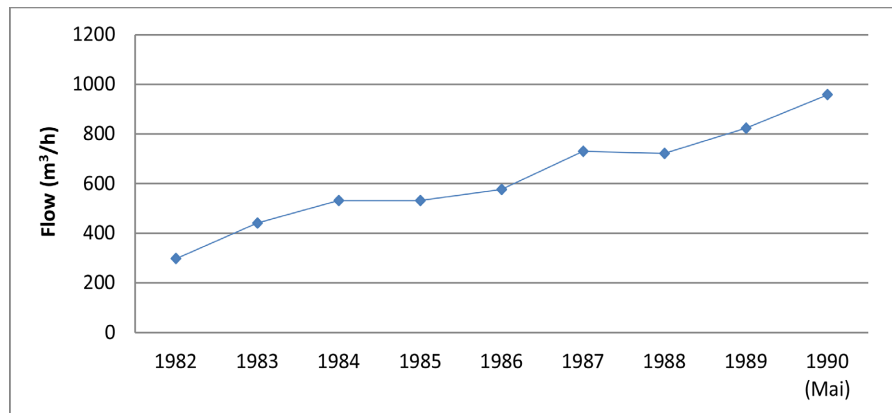


Figure 2. Evolution of the outflow of water at the bottom of the Kherzet Youcef mine (1982-1990).

before the accident of June 2nd 1990.

2.2. Sampling

We have old chemical analysis data on wastewater from 1974 to 1990, as well as groundwater analyses on wells carried out by ENOF.

As part of our hydrogeological study, we monitored the change in trace element (ETM) levels during a period from June 2015 to November 2016.

These samples are manual and are carried out at the head of the borehole. Samples are taken in plastic vials of 1 l capacity. Before the actual sampling, the vial is thoroughly rinsed with the collected water.

The location of samples is presented in **Figure 3**.

2.3. TMA Measurement

The water samples were previously filtered using a 0.45 μm Wattman GFC filter, then analyzed by emission spectroscopy whose source is a plasma generated by inductive coupling (ICPAES).

The role of plasma is to break molecular bonds to produce ions, free atoms so that they are excited.

3. Results and Discussions

3.1. Origin of the Water at the Bottom of the Mine

Principal component analysis (PCA) was used to explain the origin at the bottom of the mine. The PCA is a multi-variegated analysis method allowing the simultaneous study of a large number of variables whose total information cannot be visualized because of a space with more than three dimensions [11]. This method would make it possible to clarify the relationships between the variables and the phenomena at the origin of these relationships. The objective is to have information concentrated on a minimum of axis [12]. This method is widely used to interpret hydrochemical data [13].

The statistical analysis of the physico-chemical data was carried out on a data

matrix consisting of ten (10) variables and ten (10) samples distributed around the Kherzet Youcef deposit. The statistical software Statistica version 10 was used for data processing.

The correlation matrix gives a first idea of the existing associations between the different variables such as bicarbonate, chlorine, sulphates and pH. These parameters are relatively well correlated with each other (**Table 2**).

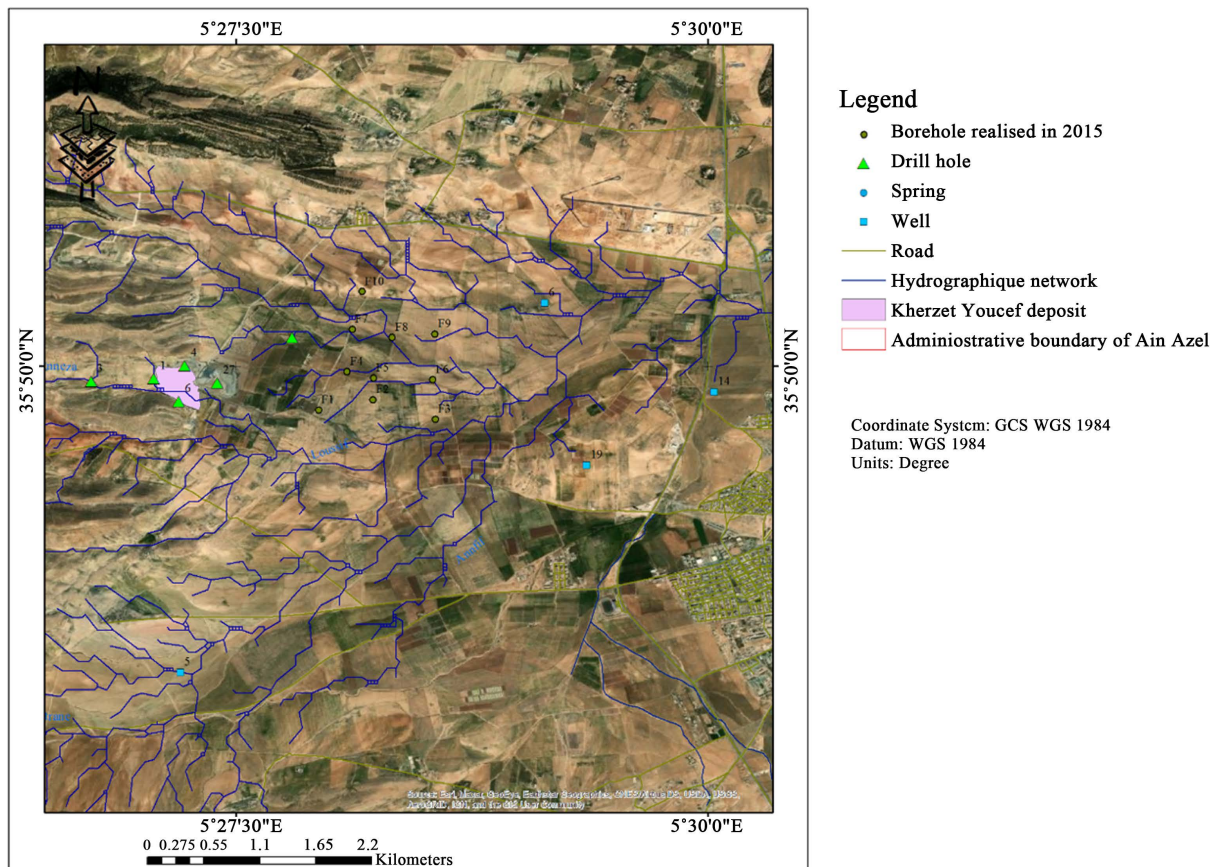


Figure 3. Collection point inventory map.

Table 2. Correlation matrix between variables on all stations studied.

	Ca ²⁺	Mg ²⁺	Na ⁺ + K ⁺	HCO ₃ ⁻	Cl ⁻	SO ₄ ²⁻	pH	Depth
Ca ²⁺	1.0000							
Mg ²⁺	0.0440	1.0000						
Na ⁺ + K ⁺	-0.4041	0.4623	1.0000					
HCO ₃ ⁻	-0.1438	0.4282	0.6194	1.0000				
Cl ⁻	-0.2313	-0.1011	0.6460	0.0156	1.0000			
SO ₄ ²⁻	-0.1818	0.7310	0.9272	0.5742	0.5088	1.0000		
PH	-0.0571	0.8147	0.4757	0.3204	0.1744	0.6787	1.0000	
Depth	0.3000	-0.0702	-0.2358	-0.6671	0.1209	-0.1081	0.1098	1.0000

The eigenvalues of the correlation matrix make it possible to measure the percentage of the variance explained by each factorial (**Figure 4**). The eigenvalue graph shows that the first factorial plane, consisting of the axes F1 and F2, represents 66.42% of the total inertia. It proves to be sufficient to reflect the essence of this inertia. Because if we observe the distribution of the eigenvalues, we find that the main offset occurs just after the first two values, which means that the first two axes are sufficient to represent the information in its entirety.

The graphs resulting from factor analysis, highlight groupings, oppositions and directional trends. The F1 axis expresses 46.37% of the variance and represents most of the variables in the same direction in a negative way, these are bicarbonate, alkaline earth, sulphates and pH (**Figure 5**), which expresses the same origin of these variables. For two variables, depth and calcium are related and evolve in the same direction and differ on the F2 axis which expresses 20.05% of the variance.

Principal component analysis (**Figure 6**) makes it possible to determine the waters according to their origin, the waters belonging to the surface table and the waters coming from the Barremian table, these waters are of bicarbonated character. For water from the bottom of the mine (Pit II) are individualized and do not belong to any group. This can be explained by the change in the chemical quality of the waters after the rock is crushed and the time it takes to store the water at the bottom of the mine before discharging it to the outside.

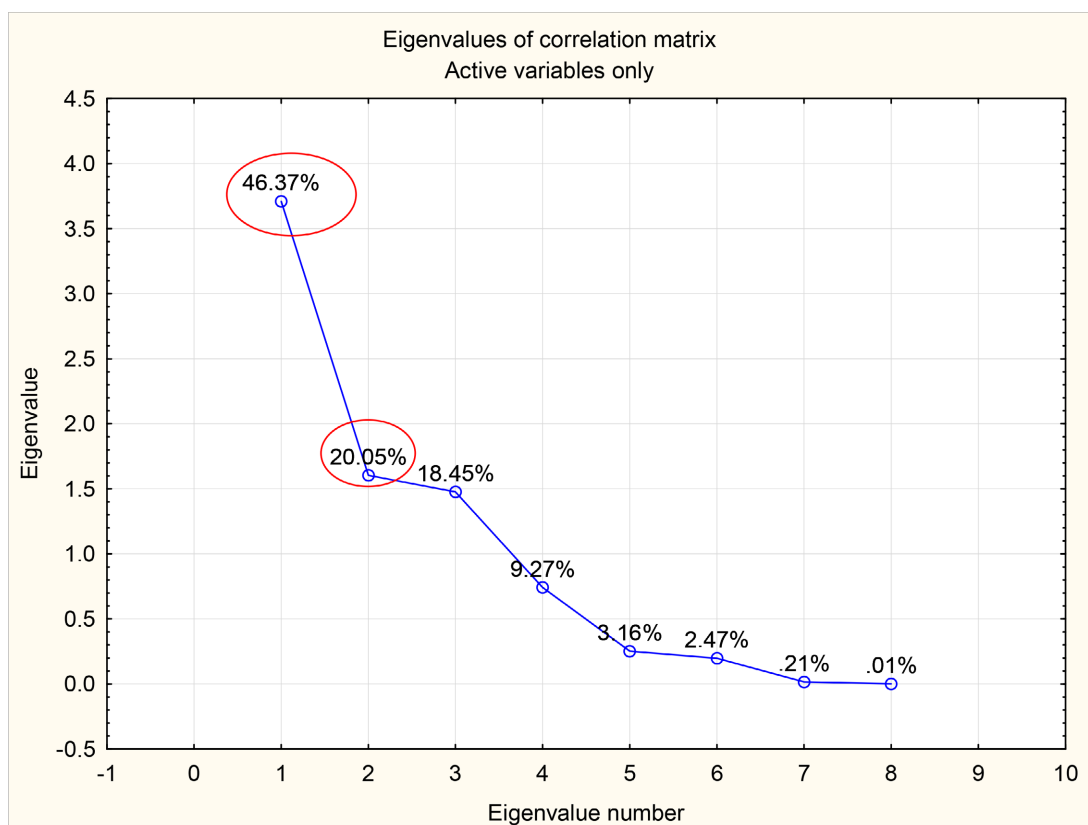


Figure 4. Eigenvalue of correlation matrix.

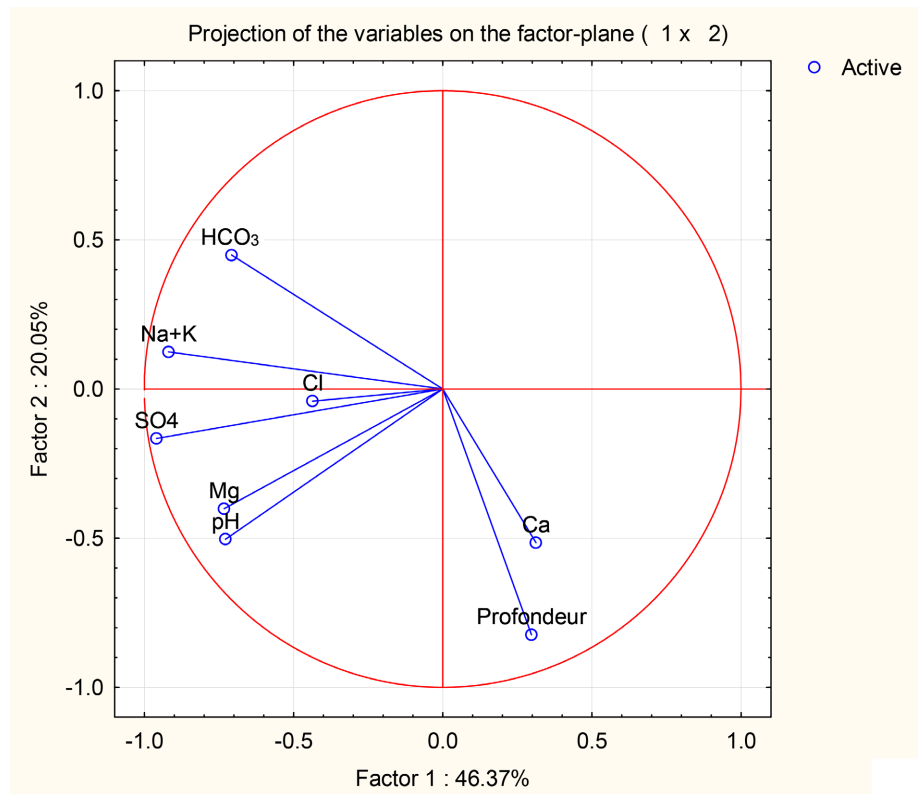


Figure 5. Projection of the variables on the factor-plane (F1-F2).

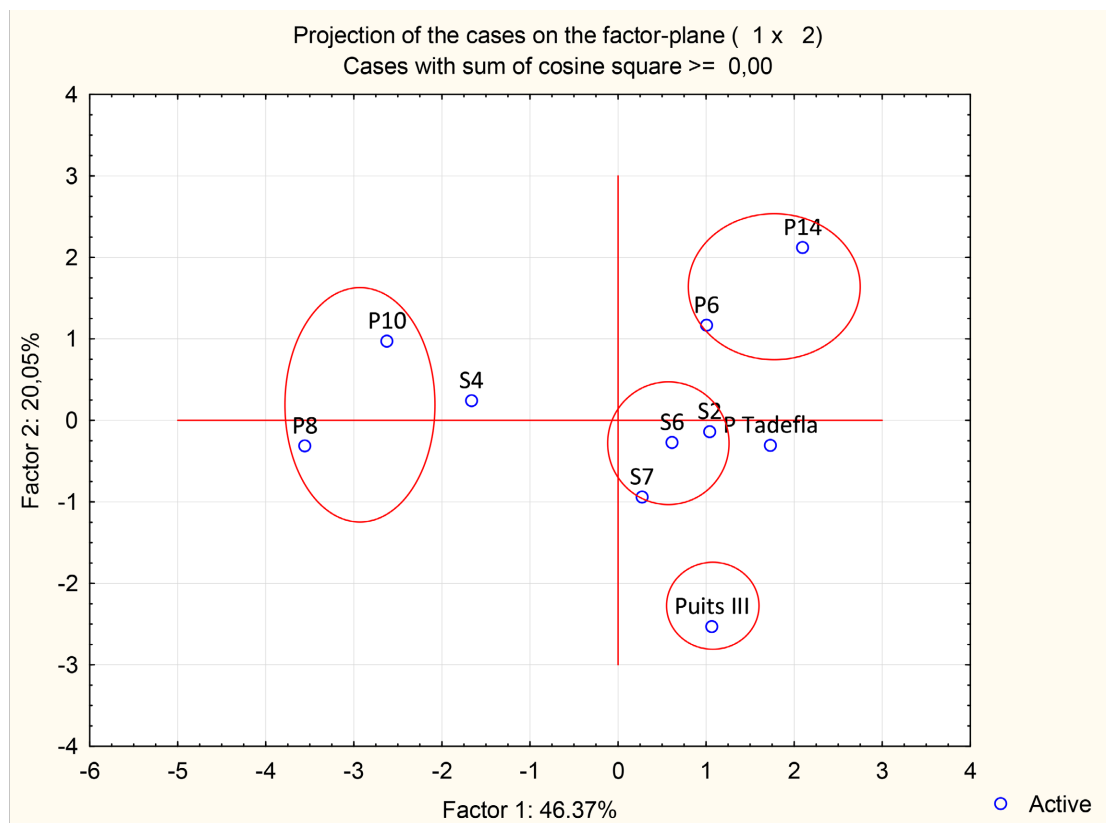


Figure 6. Projection of the cases on the factor-plane (F1-F2).

3.2. Kherzet Youcef Mine Water Suitability for Irrigation

In the vicinity of the Kherzet Youcef deposit lies a vast expanse. This area is agricultural land used for potato and cereal crop production.

A decision has been made to use the drainage water of the Kherzet Youcef deposit for irrigation of a perimeter on an area of about 350 ha.

To characterize the irrigability of exhaust water, we use the values of electrical conductivity at 25°C and those of the sodium adsorption ratio (SAR).

$$S.A.R. = \frac{[Na^+]}{\sqrt{\frac{[Ca^{2+}] + [Mg^{2+}]}{2}}}$$

The SAR is less than 5 (Figure 7) and waters do not cause the risk of alkalization of soils [13] [14]. The transfer of the samples placed on the irrigation water classification diagram shows that the waters are between the good class (S1) and the middle class (S2) where the danger of alkalization of the soil is appreciable in soils with fine texture and high exchange capacity.

The exchangeable Na+ ions can replace the alkaline earth ions (Ca²⁺ and Mg²⁺) of the clays, thus causing the blocking of the soil pores and thus its waterproofing.

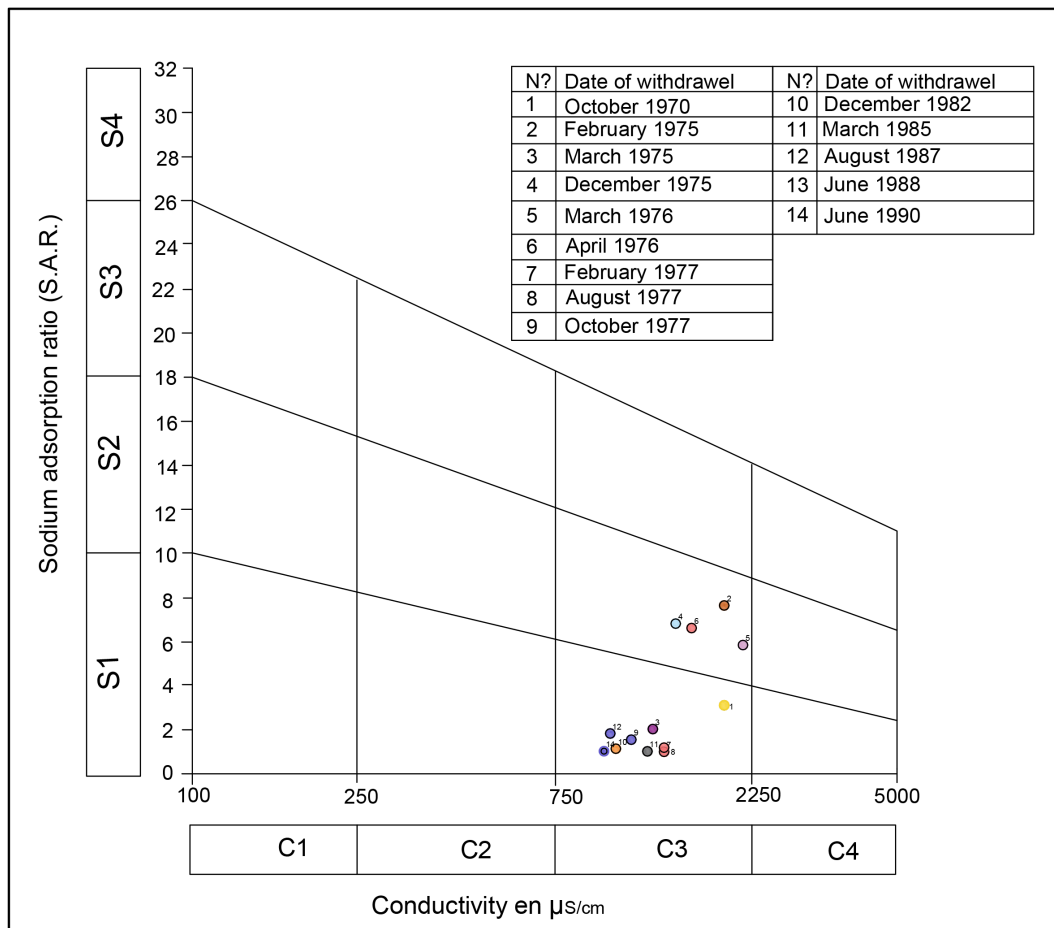


Figure 7. Diagram for the classification of irrigation water according to the SAR.

3.3. Suitability of Neogene Groundwater for Drinking Water Supply

The results of analysis of the trace metal elements are shown in **Figures 8-10**. These values are compared to the limit values set by the Algerian regulations [15] and the limit values set by WHO [16]. Note that the WHO has no indication regarding the maximum allowable value of iron [16].

For Zn (**Figure 8**), the analysis values on all waters sampled do not exceed 1 mg/l. this result remains admissible by the WHO standard set at 3 mg/l and the

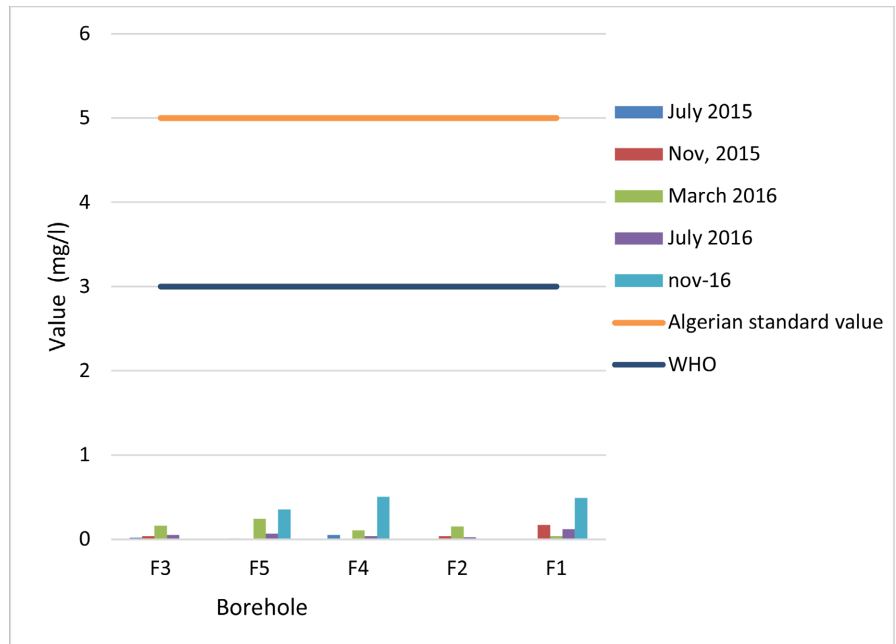


Figure 8. Change in Zn levels in groundwater.

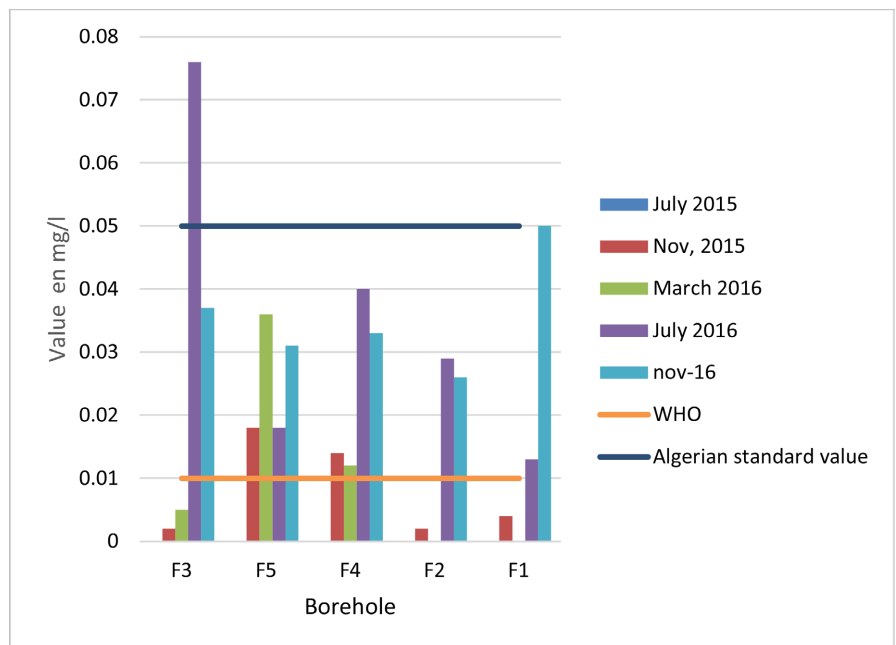


Figure 9. Change in Pb levels in groundwater.

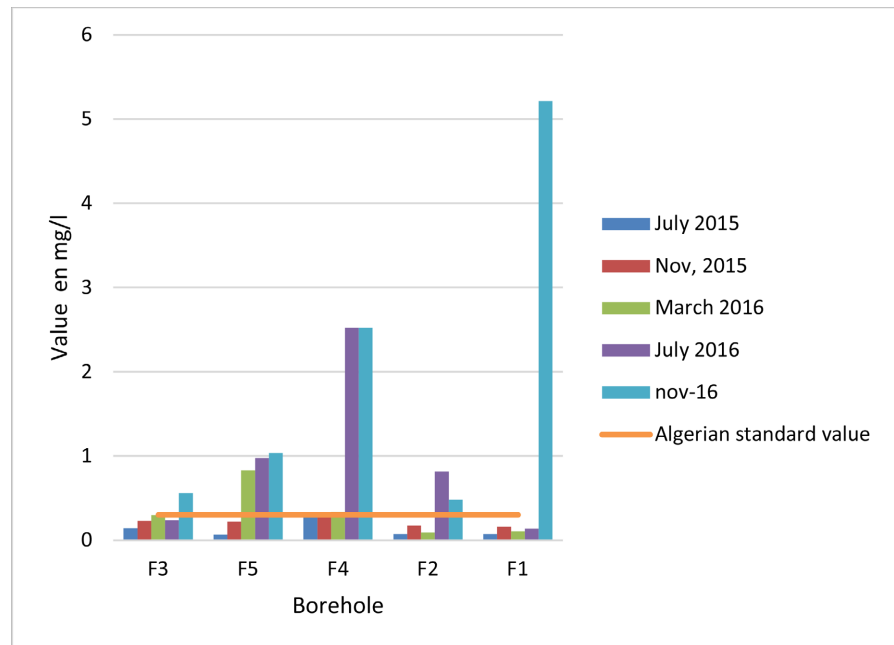


Figure 10. Change in Fe levels in groundwater.

Algerian standard, less demanding, set at 5 mg/l.

For Pb (**Figure 9**), the majority of assay values are not permissible under the WHO standard (0.01 mg/l). For the Algerian standard, only one sample, on borehole 3 dated July 2016, we note that this value is higher than the Algerian standard.

As regards the Fe element, the majority of the values of the results obtained are higher than the maximum value fixed by the Algerian regulations.

4. Conclusions

In the context of the hydrogeological study of the Kherzet Youcef deposit, a considerable amount of water must be evacuated in order to resume mining activity.

From the climatic point of view the Ain Azel region is located on a semi-arid climate with very low inputs. The lack of water resources to meet needs (agriculture, drinking water supply or industrial water supply) has led managers to exploit all available resources.

The quality of these resources and their suitability for use is an indispensable parameter.

In our work, it has been shown that waste water is suitable for use in agriculture. For this we used the electrical conductivity at 25°C and those of the sodium adsorption ratio (SAR).

For drinking water supply, monitoring the change in TEM (Zn, Pb and Fe) for two years has allowed us to conclude that groundwater in the groundwater table east of the Kherzet Youcef fault is generally acceptable. They are eligible by the quality standard set by Algerian regulations. However, they exceed WHO standards, especially for lead.

These trace metal elements (Zn, Pb and Fe) are among the most toxic of soil contaminants. In very small quantities, some are indispensable for the metabolism of living beings, but harm their health in large doses. We recommend a revision of drinking water quality standards set by Algerian regulations, rigorous monitoring of TEM content variation and water treatment before distribution.

Acknowledgments

The authors would like to thank the technical and administrative staff of the national non-ferrous company, unit of Kherzet Youcef.

Conflicts of Interest

The authors declare no conflicts of interest regarding the publication of this paper.

References

- [1] Calow, C.R., MacDoanald, A.M., Nicol, A.L. and Robins, N.S. (2010) Ground Water Security and Drought in Africa: Linking Availability, Access and Demand. *Ground Water*, **48**, 246-256. <https://doi.org/10.1111/j.1745-6584.2009.00558.x>
- [2] Soro, G., Soro, T.D., Fossou, N. and Adjiri, O.A. (2019) Application des méthodes statistiques multivariées à l'étude hydrochimique des eaux souterraines de la région des lacs (centre de la Côte d'Ivoire). *International Journal of Biological and Chemical Sciences*, **13**, 1870. <https://doi.org/10.4314/ijbcs.v13i3.54>
- [3] Bouchemal, F. and Achour, S. (2015) Qualité physico-chimique et paramètres de pollution des eaux souterraines de la région de Biskra. *Larhyss Journal*, **22**, 197-212.
- [4] Smith, R.A.H. and Bradshaw, A.D. (1972) Stabilization of Toxic Mine Wastes by the Use Tolerant Plant Populations. *Transactions of Institution of Mining and Metallurgy (Section A)*, **81**, 230-237.
- [5] Merrington, G. and Alloway, B.J. (1994) The Flux of Cd, Cu, Pb and Zn in Mining Polluted Soils. *Water, Air and Soil Pollution*, **73**, 333-344. <https://doi.org/10.1007/BF00477997>
- [6] Fanfani, L., Zuddas, P. and Chessa, A. (1997) Heavy Metals Speciation Analysis as a Tool for Studying Mine Tailings Weathering. *Journal of geochemical Exploration*, **58**, 241-248. [https://doi.org/10.1016/S0375-6742\(96\)00059-3](https://doi.org/10.1016/S0375-6742(96)00059-3)
- [7] Paquette, Y., Blachere, A., Lefebvre, O., Guise, Y. and Barriere, J.P. (2000) Les lacs miniers des exploitations à ciel ouvert du Massif central: Qualité et évolution. *Chronique de la Recherche minière*, **541**, 85-101.
- [8] Jung, M.C. (2001) Heavy Metal Contamination of Soils and Waters in and around the Imcheon Au-Ag Mine, Korea. *Applied Geochemistry*, **16**, 1369-1375. [https://doi.org/10.1016/S0883-2927\(01\)00040-3](https://doi.org/10.1016/S0883-2927(01)00040-3)
- [9] Jabour, J.L. (2003) Mine-Waste Mineralogy and Mineralogical Perspectives of Acid-Base Accounting. In: Jabour, J.L., Blowes, D.W. and Ritchie, A.I.M., Eds., *Environmental Aspects of Mine Wastes*, Mineralogical Association of Canada, Québec, Vol. 31, 117-145.
- [10] ENOF: Entreprise Nationale des Produits Miniers Non Ferreux (2002) Situation hydrogéologique du gisement de Kherzet Youcef. 10 p.
- [11] Mouissi, S. and Alayat, H. (2016) Utilisation de l'analyse en composantes principales

- (ACP) pour la caractérisation physico-chimique des eaux d'un écosystème aquatique: Cas du las Oubéira (Extrême NE Algérien). *Journal of Materials and Environmental Science*, **7**, 2214-2220.
- [12] Ayadi, I., Habib, H. and Yasmine, D. (2016) Caractérisation physico-chimique, minéralogique et géochimique des sédiments de la retenue du barrage Sidi chahed et des sols du bassin versant de l'oued Mikkés. *13th World Water Congress*, Vol. 1, 139-147.
- [13] WHO (2000) Directives de qualité pour l'eau de boisson. 2nd Edition, Vol. 2, Critères d'hygiène et documentation à l'appui, 1050 p.
- [14] Subramani, T., Elango, L. and Damodarasamy, S.R. (2005) Groundwater Quality and Its Suitability for Drinking and Agricultural Use in Chithar River Basin, Tamil Nadu, India. *Environmental Geology*, **47**, 1099-1110.
<https://doi.org/10.1007/s00254-005-1243-0>
- [15] General Secretariat of Government (SGG) (2011) Décret exécutif n° 11-219 du 10 Rajab 1432 correspondant au 12 juin 2011 fixant les objectifs de qualité des eaux superficielles et souterraines destinées à l'alimentation en eau des populations. *Journal officiel*, **34**, 4-6.
- [16] OMS (2006) Norme de qualité de potabilité des eaux.
<https://www.lenntech.fr/applications/potable/normes/normes-oms-eau-potable.htm>