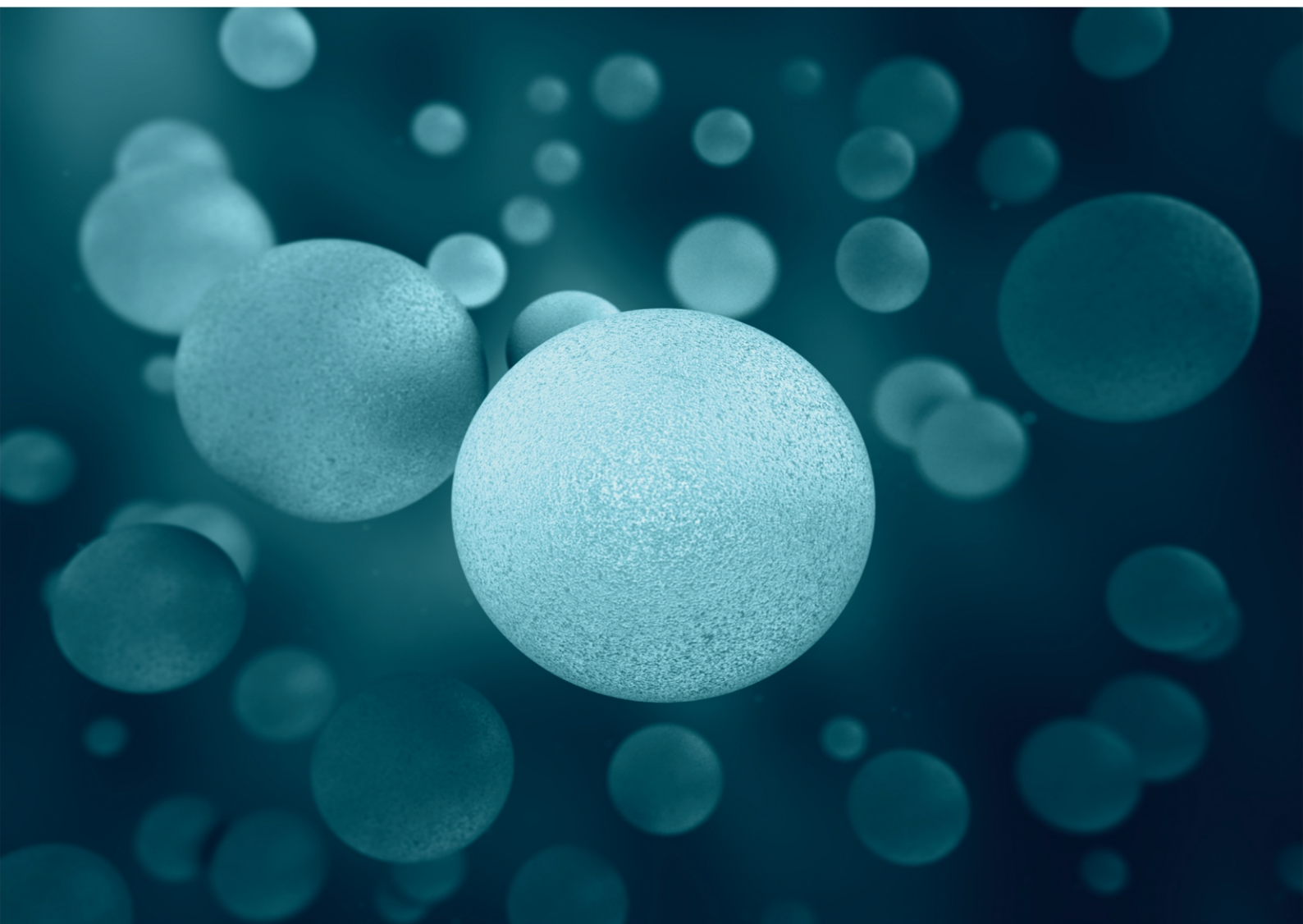


ISSN: 2164-6775 Volume 13, Number 4, October 2023



Open Journal of Pathology



ISSN: 2164-6775



<https://www.scirp.org/journal/ojpathology>

Journal Editorial Board

ISSN 2164-6775 (Print) ISSN 2164-6783 (Online)

<https://www.scirp.org/journal/ojpathology>

Editor-in-Chief

Prof. Takuji Tanaka

Gifu Municipal Hospital, Japan

Editorial Board

Dr. Asmaa Gaber Abdou

Menofiya University, Egypt

Dr. Julio Aliberti

Cincinnati Children's Hospital Medical Center, USA

Prof. Mohemid Maddallah Al-Jebouri

University of Tikrit, Iraq

Prof. Valquiria Bueno

Federal University of Sao Paulo, Brazil

Dr. Kailash C. Chadha

Roswell Park Cancer Institute, USA

Prof. Nam Hoon Cho

Yonsei Medical University, South Korea

Prof. Pranab Kumar Das

Academic Medical Center-University of Amsterdam, UK

Prof. Jan M. A. Delabie

University of Oslo and University Hospital of Oslo, Norway

Prof. Reza Hakkak

University of Arkansas for Medical Sciences, USA

Prof. Mansour F. Hussein

King Saud University, Saudi Arabia

Prof. Lidia Larizza

University of Milan, Italy

Dr. Anthony W. I. Lo

The Chinese University of Hong Kong, China

Dr. Vamsi Parini

Northwestern University, USA

Dr. Krutika Patel

Vanderbilt University, USA

Prof. Churilov Leonid Pavlovich

Saint Petersburg State University, Russia

Prof. Daniela Quaglino

University of Modena and Reggio Emilia, Italy

Prof. Matteo A. Russo

University of Rome, Italy

Dr. Kunihiro Sakuma

Toyohashi University of Technology, Japan

Dr. Farooq Ahmed Wani

College of Medicine, Jouf University, Saudi Arabia

Prof. Han-Seung Yoon

Iida Municipal Hospital, Japan

Table of Contents

Volume 13 Number 4

October 2023

Pontocerebellar Progressive Multifocal Leukoencephalopathy. Radiological, Clinical, Histological and Immunohistochemical Findings in a Hematological Patient

J. Ortiz, J. C. Paniagua, I. Cavaco, R. Rivas, A. Jimenez, L. Chinchilla, E. Muñoz, M. D. Ludeña.....177

Prevalence and Predictive Factors of Severe Coronary Lesions in Algerian Patients Undergoing Coronary Angiography

M. Boukheloua, M. Berrehal, A. Baali, S. Chelghoum, D. Nibouche.....184

Health Care System in Portugal for People with Motor Problems

B. Ferreira, M. Carolina.....195

Pneumatosis Cystoides Intestinalis Revealed by an Occlusive Syndrome: A Case Report

F. A. H. A. Ido, A. S. Ouédraogo, I. Savadogo, R. A. Ouédraogo, S. Ouattara,
A. Lamien-Sanou, O. M. Lompo.....210

A Case of Cerebral Aspergillosis in a Patient with Chronic Lymphoid Leukemia

A. S. Ouédraogo, F. A. H. A. Ido, I. Savadogo, S. Ouattara, R. A. Ouédraogo, A. L. Sanou, O. M. Lompo.....217

Lesions Superimposed by Traditional Medicine on Renal Biopsies in Senegal

C. M. M. Dial, T. D. Gani, E. H. F. Ka, A. Niang, B. Diouf.....224

Digestive Tuberculosis in Madagascar: Histopathological Aspects

N. Lalaina, R. M. Ranaliarinosy, R. M. Judicaël, R. N. Soa.....229

Open Journal of Pathology (OJPathology)

Journal Information

SUBSCRIPTIONS

The *Open Journal of Pathology* (Online at Scientific Research Publishing, <https://www.scirp.org/>) is published quarterly by Scientific Research Publishing, Inc., USA.

Subscription rates:

Print: \$79 per issue.

To subscribe, please contact Journals Subscriptions Department, E-mail: sub@scirp.org

SERVICES

Advertisements

Advertisement Sales Department, E-mail: service@scirp.org

Reprints (minimum quantity 100 copies)

Reprints Co-ordinator, Scientific Research Publishing, Inc., USA.

E-mail: sub@scirp.org

COPYRIGHT

Copyright and reuse rights for the front matter of the journal:

Copyright © 2023 by Scientific Research Publishing Inc.

This work is licensed under the Creative Commons Attribution International License (CC BY).

<http://creativecommons.org/licenses/by/4.0/>

Copyright for individual papers of the journal:

Copyright © 2023 by author(s) and Scientific Research Publishing Inc.

Reuse rights for individual papers:

Note: At SCIRP authors can choose between CC BY and CC BY-NC. Please consult each paper for its reuse rights.

Disclaimer of liability

Statements and opinions expressed in the articles and communications are those of the individual contributors and not the statements and opinion of Scientific Research Publishing, Inc. We assume no responsibility or liability for any damage or injury to persons or property arising out of the use of any materials, instructions, methods or ideas contained herein. We expressly disclaim any implied warranties of merchantability or fitness for a particular purpose. If expert assistance is required, the services of a competent professional person should be sought.

PRODUCTION INFORMATION

For manuscripts that have been accepted for publication, please contact:

E-mail: ojpathology@scirp.org



Call for Papers

Open Journal of Pathology

ISSN: 2164-6775 (Print) ISSN: 2164-6783 (Online)
<https://www.scirp.org/journal/ojpathology>

Open Journal of Pathology is an international journal dedicated to the latest advancement of pathology. The goal of this journal is to provide a platform for researchers and academics all over the world to promote, share, and discuss various new issues and developments in pathology related problems. All manuscripts must be prepared in English, and are subject to a rigorous and fair peer-review process. Accepted papers will immediately appear online followed by printed hard copy.

Editor-in-Chief

Prof. Takuji Tanaka

Gifu Municipal Hospital, Japan

Editorial Board

Dr. Asmaa Gaber Abdou

Dr. Julio Aliberti

Prof. Mohemid Maddallah

Al-Jebouri

Prof. Valquiria Bueno

Dr. Kailash C. Chadha

Prof. Nam Hoon Cho

Prof. Pranab Kumar Das

Prof. Jan M. A. Delabie

Prof. Reza Hakkak

Prof. Mansour F. Hussein

Prof. Lidia Larizza

Dr. Anthony W. I. Lo

Dr. Vamsi Parini

Dr. Krutika Patel

Prof. Churilov Leonid Pavlovich

Prof. Daniela Quaglino

Prof. Matteo A. Russo

Dr. Kunihiro Sakuma

Dr. Farooq Ahmed Wani

Prof. Han-Seung Yoon

Subject Coverage

The journal publishes original papers including but not limited to the following fields:

- Anatomical Pathology
- Clinical Pathology
- Dermatopathology
- Forensic Pathology
- Molecular Pathology
- Oral and Maxillofacial Pathology
- Pathochemistry
- Pathology History
- Pathophysiology
- Plant Pathology
- Psychopathology
- Veterinary Pathology

We are also interested in: 1) Short reports—2-5 page papers where an author can either present an idea with theoretical background but has not yet completed the research needed for a complete paper or preliminary data; 2) Book reviews—Comments and critiques.

Notes for Intending Authors

Submitted papers should not have been previously published nor be currently under consideration for publication elsewhere. Paper submission will be handled electronically through the website. All papers are refereed through a peer review process. For more details about the submissions, please access the website.

Website and E-Mail

<https://www.scirp.org/journal/ojpathology>

E-mail: ojpathology@scirp.org

What is SCIRP?

Scientific Research Publishing (SCIRP) is one of the largest Open Access journal publishers. It is currently publishing more than 200 open access, online, peer-reviewed journals covering a wide range of academic disciplines. SCIRP serves the worldwide academic communities and contributes to the progress and application of science with its publication.

What is Open Access?

All original research papers published by SCIRP are made freely and permanently accessible online immediately upon publication. To be able to provide open access journals, SCIRP defrays operation costs from authors and subscription charges only for its printed version. Open access publishing allows an immediate, worldwide, barrier-free, open access to the full text of research papers, which is in the best interests of the scientific community.

- High visibility for maximum global exposure with open access publishing model
- Rigorous peer review of research papers
- Prompt faster publication with less cost
- Guaranteed targeted, multidisciplinary audience



Scientific
Research
Publishing

Website: <https://www.scirp.org>

Subscription: sub@scirp.org

Advertisement: service@scirp.org