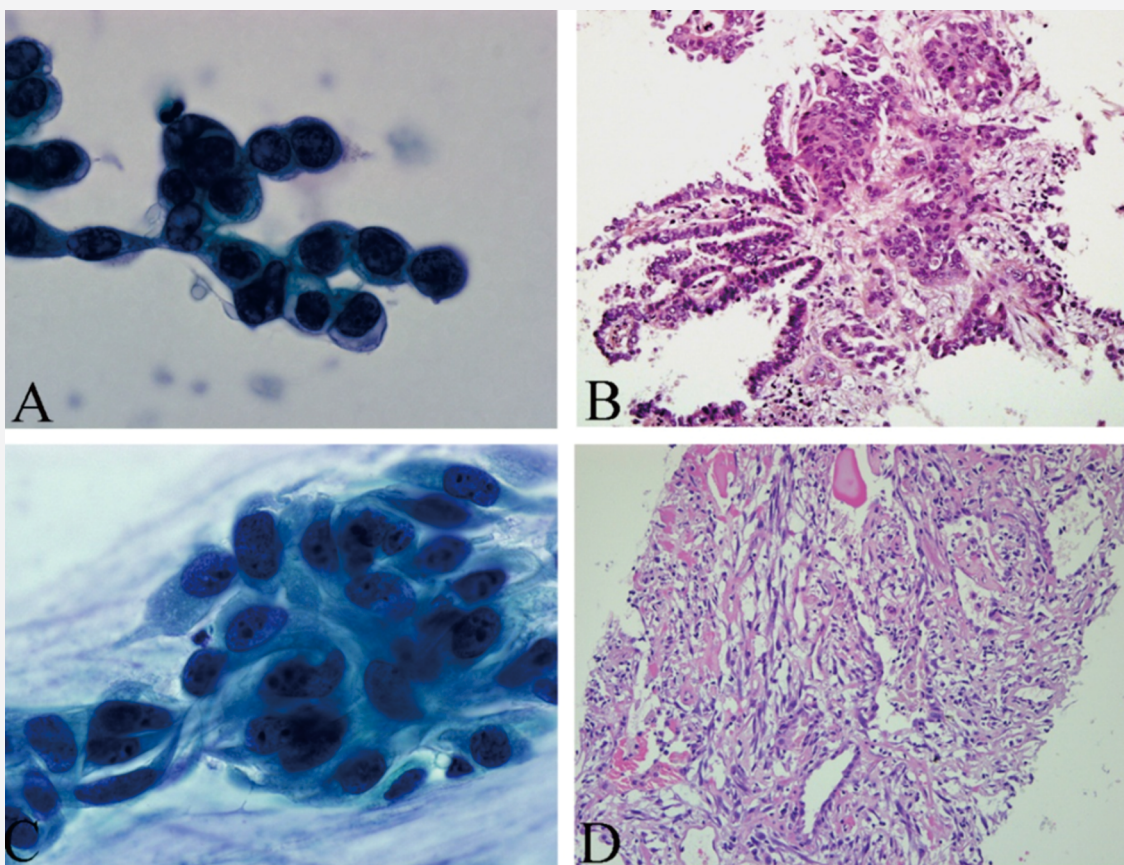


# Open Journal of Pathology



ISSN: 2164-6775



# Journal Editorial Board

ISSN 2164-6775 (Print) ISSN 2164-6783 (Online)

<http://www.scirp.org/journal/ojpathology>

---

## Editor-in-Chief

**Prof. Jianyu Rao**

University of California at Los Angeles, USA

## Editorial Board

**Dr. Asmaa Gaber Abdou**

Menofiya University, Egypt

**Dr. Julio Aliberti**

Cincinnati Children's Hospital Medical Center, USA

**Prof. Javier Azúa-Romeo**

University of Zaragoza, Spain

**Dr. Roberto Bei**

University of Rome Tor Vergata, Italy

**Dr. Renald Blundell**

University of Malta, Malta

**Prof. Valquiria Bueno**

Federal University of São Paulo, Brazil

**Dr. Kailash C. Chadha**

Roswell Park Cancer Institute, USA

**Prof. Nam Hoon Cho**

Yonsei Medical University, South Korea

**Dr. Elahé T. Crockett**

Michigan State University, USA

**Dr. Qinghua Cui**

Peking University, China

**Prof. Jan M. A. Delabie**

University of Oslo and University Hospital of Oslo, Norway

**Dr. Patricia DeVilliers**

University of Alabama at Birmingham, USA

**Dr. Paul C. Evans**

University of Sheffield, UK

**Prof. Reza Hakkak**

University of Arkansas for Medical Sciences, USA

**Prof. Kazim Husain**

Ponce School of Medicine and Medical Sciences, USA

**Prof. Mansour F. Hussein**

King Saud University, Saudi Arabia

**Prof. Lidia Larizza**

University of Milan, Italy

**Dr. Anthony W. I. Lo**

The Chinese University of Hong Kong, China

**Prof. Churilov Leonid Pavlovich**

Saint Petersburg State University, Russia

**Dr. George Perry**

The University of Texas at San Antonio, USA

**Prof. Daniela Quaglino**

University of Modena and Reggio Emilia, Italy

**Dr. Sophia Ran**

Southern Illinois University, USA

**Dr. Mohammed S. Razzaque**

Harvard School of Dental Medicine, USA

**Prof. Matteo A. Russo**

University of Rome, Italy

**Dr. Kunihiro Sakuma**

Toyohashi University of Technology, Japan

**Dr. Sophie X. Song**

University of California at Los Angeles Medical Center, USA

**Dr. Gloria H. Su**

Columbia University College of Physicians and Surgeons, USA

**Prof. Takuji Tanaka**

The Tohoku Cytopathology Institute: Cancer Research  
and Prevention (TCI-CaRP), Japan

**Dr. Mingqian Wei**

Griffith University, Australia

**Prof. Han-Seung Yoon**

University of Otago, New Zealand

## TABLE OF CONTENTS

**Volume 3    Number 3**

**July 2013**

**Assessment of Diagnostic Accuracy of Bronchoalveolar Lavage Cytology in the Diagnosis of Lung Tumors and Contribution to the Classification of Non-Small Cell Lung Cancer Entities: A Retrospective Clinocopathological Study**

A. Zimpfer, A. Polak, A. Bier, G. Kundt, J. Kölbels, F. Prall, J. C. Virchow, A. Erbersdobler.....107

**Pleomorphic Adenoma with Exuberant Squamous Metaplasia and Keratin Cysts Mimicking Squamous Cell Carcinoma in Minor Salivary Gland**

S. Lim, I. Cho, J.-H. Park, S.-C. Lim.....113

**Tuberculosis of Thyroid Gland: A Case Report with Review of Articles**

S. Sengupta, S. Pal, J. P. Phukan, K. Bose, S. Jana.....117

**Protein Globule Formation in the Liver Graft during Cold Preservation for Liver Transplantation: Its Clinical and Pathological Significance**

C. Y. Feng, T. M. He, H. J. Huang, L. J. Qu, Y. Jiang, W. H. Zhang, Z. Y. Zheng.....119

**Multifocal Malignant Lymphoma of the Breast**

E. Ozgun, D. Tuncel, A. Tan, A. Albayrak, S. Sayhan, N. Bozlak.....127

**Mature Placental Teratoma: Case Report**

N. O. Barisik, C. C. Barisik, S. Keser, A. E. Gul.....131

**Spontaneous Mammary Carcinomas in Female Dogs: Association between the Immunohistochemical Degree of Aggressiveness of Tumors, Intensity of DNA Damage and Residues of Pyrethroids**

Y. de Oliveira Brandão, M. M. Colodel, G. N. da Silva, S. C. Vexenat, I. Ferreira, Y. F. R. S. da Silva, C. Bulla, N. S. Roch.....133

---

The figure on the front cover is from the article published in Open Journal of Pathology, 2013, Vol. 3, No. 3, pp. 107-112 by Annette Zimpfer, *et al.*

# **Open Journal of Pathology (OJPathology)**

## **Journal Information**

### **SUBSCRIPTIONS**

The *Open Journal of Pathology* (Online at Scientific Research Publishing, [www.SciRP.org](http://www.SciRP.org)) is published quarterly by Scientific Research Publishing, Inc., USA.

#### **Subscription rates:**

Print: \$59 per issue.

To subscribe, please contact Journals Subscriptions Department, E-mail: [sub@scirp.org](mailto:sub@scirp.org)

### **SERVICES**

#### **Advertisements**

Advertisement Sales Department, E-mail: [service@scirp.org](mailto:service@scirp.org)

#### **Reprints (minimum quantity 100 copies)**

Reprints Co-ordinator, Scientific Research Publishing, Inc., USA.

E-mail: [sub@scirp.org](mailto:sub@scirp.org)

### **COPYRIGHT**

Copyright©2013 Scientific Research Publishing, Inc.

All Rights Reserved. No part of this publication may be reproduced, stored in a retrieval system, or transmitted, in any form or by any means, electronic, mechanical, photocopying, recording, scanning or otherwise, except as described below, without the permission in writing of the Publisher.

Copying of articles is not permitted except for personal and internal use, to the extent permitted by national copyright law, or under the terms of a license issued by the national Reproduction Rights Organization.

Requests for permission for other kinds of copying, such as copying for general distribution, for advertising or promotional purposes, for creating new collective works or for resale, and other enquiries should be addressed to the Publisher.

Statements and opinions expressed in the articles and communications are those of the individual contributors and not the statements and opinion of Scientific Research Publishing, Inc. We assume no responsibility or liability for any damage or injury to persons or property arising out of the use of any materials, instructions, methods or ideas contained herein. We expressly disclaim any implied warranties of merchantability or fitness for a particular purpose. If expert assistance is required, the services of a competent professional person should be sought.

### **PRODUCTION INFORMATION**

For manuscripts that have been accepted for publication, please contact:

E-mail: [ojpathology@scirp.org](mailto:ojpathology@scirp.org)



# Open Journal of Pathology

ISSN: 2164-6775 (Print)    ISSN: 2164-6783 (Online)  
<http://www.scirp.org/journal/ojpathology>

Open Journal of Pathology is an international journal dedicated to the latest advancement of pathology. The goal of this journal is to provide a platform for researchers and academics all over the world to promote, share, and discuss various new issues and developments in pathology related problems. All manuscripts must be prepared in English, and are subject to a rigorous and fair peer-review process. Accepted papers will immediately appear online followed by printed hard copy.

## Editor-in-Chief

**Prof. Jianyu Rao**

University of California at Los Angeles, USA

## Editorial Board

Dr. Asmaa Gaber Abdou  
 Dr. Julio Aliberti  
 Prof. Javier Azúa-Romeo  
 Dr. Roberto Bei  
 Dr. Renald Blundell  
 Prof. Valquiria Bueno  
 Dr. Kailash C. Chadha  
 Prof. Nam Hoon Cho  
 Dr. Elahé T. Crockett  
 Dr. Qinghua Cui

Prof. Jan M. A. Delabie  
 Dr. Patricia DeVilliers  
 Dr. Paul C. Evans  
 Prof. Reza Hakkak  
 Prof. Kazim Husain  
 Prof. Mansour F. Hussein  
 Prof. Lidia Larizza  
 Dr. Anthony W. I. Lo  
 Prof. Churilov Leonid Pavlovich  
 Dr. George Perry

Prof. Daniela Quaglino  
 Dr. Sophia Ran  
 Dr. Mohammed S. Razzaque  
 Prof. Matteo A. Russo  
 Dr. Kunihiro Sakuma  
 Dr. Sophie X. Song  
 Dr. Gloria H. Su  
 Prof. Takuji Tanaka  
 Dr. Mingqian Wei  
 Prof. Han-Seung Yoon

## Subject Coverage

The journal publishes original papers including but not limited to the following fields:

- Anatomical Pathology
- Clinical Pathology
- Dermatopathology
- Forensic Pathology
- Molecular Pathology
- Oral and Maxillofacial Pathology
- Pathochemistry
- Pathology History
- Pathophysiology
- Plant Pathology
- Psychopathology
- Veterinary Pathology

We are also interested in: 1) Short reports—2 - 5 page papers where an author can either present an idea with theoretical background but has not yet completed the research needed for a complete paper or preliminary data; 2) Book reviews—Comments and critiques.

## Notes for Intending Authors

Submitted papers should not have been previously published nor be currently under consideration for publication elsewhere. Paper submission will be handled electronically through the website. All papers are refereed through a peer review process. For more details about the submissions, please access the website.

## Website and E-Mail

<http://www.scirp.org/journal/ojpathology>

E-mail: [ojpathology@scirp.org](mailto:ojpathology@scirp.org)