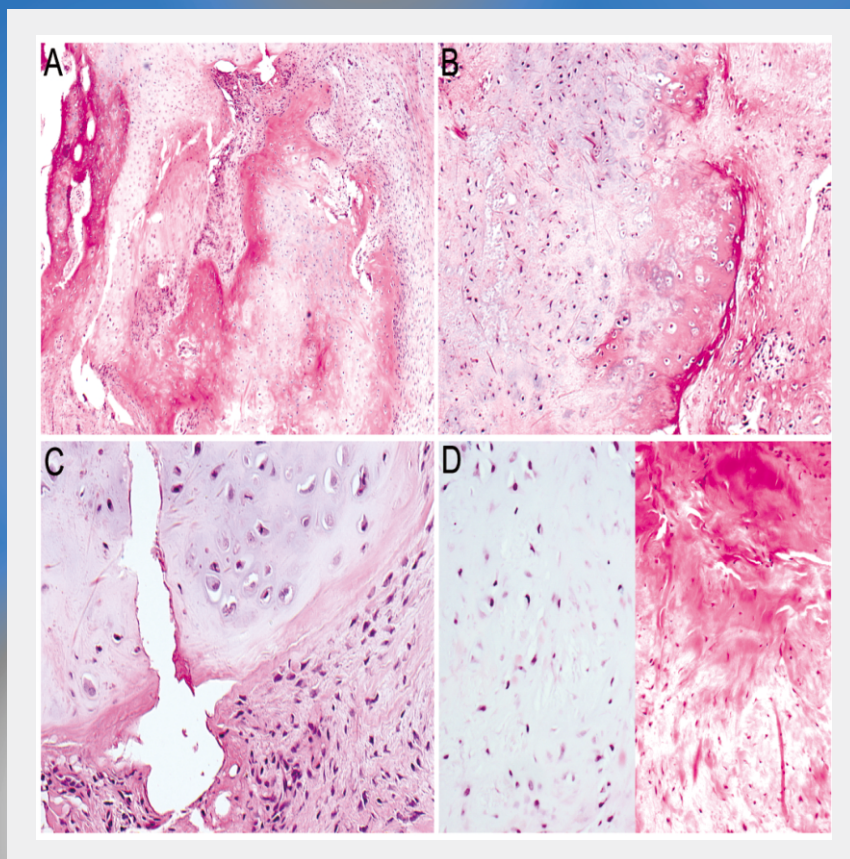




Open Journal of Pathology



Journal Editorial Board

ISSN 2164-6775 (Print) ISSN 2164-6783 (Online)

<http://www.scirp.org/journal/ojpathology>

Editorial Board

Dr. Asmaa Gaber Abdou	Menofiya University, Egypt
Dr. Julio Aliberti	Cincinnati Children's Hospital Medical Center, USA
Prof. Javier Azúa-Romeo	University of Zaragoza, Spain
Dr. Roberto Bei	University of Rome Tor Vergata, Italy
Dr. Giuliano Bettini	University of Bologna, Italy
Dr. Renald Blundell	University of Malta, Malta
Prof. Valquiria Bueno	Federal University of São Paulo, Brazil
Dr. Kailash C. Chadha	Roswell Park Cancer Institute, USA
Prof. Nam Hoon Cho	Yonsei Medical University, Korea (South)
Dr. Elahé T. Crockett	Michigan State University, USA
Dr. Qinghua Cui	Peking University, China
Prof. Jan M. A. Delabie	University of Oslo and University Hospital of Oslo, Norway
Dr. Patricia DeVilliers	University of Alabama at Birmingham, USA
Dr. Paul C. Evans	University of Sheffield, UK
Prof. Reza Hakkak	University of Arkansas for Medical Sciences, USA
Dr. Adriana Handra-Luca	University Paris 13 Nord Medecine, France
Prof. Kazim Husain	Ponce School of Medicine and Medical Sciences, USA
Prof. Mansour F. Hussein	King Saud University, Saudi Arabia
Prof. Lidia Larizza	University of Milan, Italy
Dr. Chien-Feng Li	Chi-Mei Foundational Medical Center, Chinese Taipei
Dr. Anthony W. I. Lo	The Chinese University of Hong Kong, Hong Kong (China)
Prof. Franco Laghi Pasini	University of Siena, Italy
Prof. Churilov Leonid Pavlovich	Saint Petersburg State University, Russia
Dr. George Perry	The University of Texas at San Antonio, USA
Dr. Daniela Quaglinò	University of Modena and Reggio Emilia, Italy
Dr. Sophia Ran	Southern Illinois University, USA
Prof. Jianyu Rao	University California at Los Angeles, USA
Prof. K. S. Ratnakar	Global Hospital, India
Dr. Mohammed S. Razzaque	Harvard School of Dental Medicine, USA
Prof. Matteo A. Russo	University of Rome, Italy
Dr. Kunihiro Sakuma	Toyohashi University of Technology, Japan
Prof. Gene P. Siegal	University of Alabama at Birmingham, USA
Dr. Gloria H. Su	Columbia University College of Physicians and Surgeons, USA
Prof. Takuji Tanaka	The Tohoku Cytopathology Institute: Cancer Research and Prevention (TCI-CaRP), Japan
Dr. Ming Qian Wei	Griffith University, Australia
Prof. Han-Seung Yoon	University of Otago, New Zealand
Dr. Xiaofeng Charles Zhou	University of Illinois at Chicago, USA

TABLE OF CONTENTS

Volume 2 Number 2

April 2012

Pancreatic Carcinoma with Prominent Mucin Production: A Clinicopathologic and Immunohistochemical Study of 9 Cases

M. Saito, H. Nishihara, M. Tanino, T. Kimura, Y. Matsuno, K. Nagashima, M. Shimizu, S. Tanaka.....15

Liponeurocytoma of the Cerebellum with Myoid Features

C. Laila, B. Ikram, Z. Kaoutar, B. Mohamed, M. Mustapha, A. Afaf.....21

Tonsillar Lipoma: Report of 2 Cases

E. Sameh, A. Najla, C. Abir, C. Chiraz, K. Saloua, K. Abdelmajid, B. Tahya.....24

Wegener's Granulomatosis Presenting with Bilateral Excavated Nodules

E. Braham, H. Racil, H. B. Rejeb, M. Hamdane, A. Chabou, F. El Mezni.....26

Association of Morphology and Immunophenotype in Diffuse Large B-Cell Lymphomas with Bone Marrow Infiltration in a Sample Mexican Population

M.-B. Romero-Guadarrama, F. J. Ponce, A. M. Cruz, E. L. D. Ramírez, I. P. Lara.....29

Bizarre Parosteal Osteochondromatous Proliferation-Like Lesion Originating in Soft Tissue: Report of a Case

K. N. Jhala, S. Wei, R. R. Lopez-Ben, G. P. Siegal.....38

Bioethics and the Law in Familial Cancer, a Practical Approach

A.-R. Javier.....42

The figure on the front cover is from the article published in Open Journal of Pathology, 2012, Vol. 2, No. 2, pp. 38-41 by Khushboo N. Jhala, Shi Wei, Robert R. Lopez-Ben and Gene P. Siegal.

Open Journal of Pathology (OJPathology)

Journal Information

SUBSCRIPTIONS

The *Open Journal of Pathology* (Online at Scientific Research Publishing, www.SciRP.org) is published quarterly by Scientific Research Publishing, Inc., USA.

Subscription rates:

Print: \$39 per issue.

To subscribe, please contact Journals Subscriptions Department, E-mail: sub@scirp.org

SERVICES

Advertisements

Advertisement Sales Department, E-mail: service@scirp.org

Reprints (minimum quantity 100 copies)

Reprints Co-ordinator, Scientific Research Publishing, Inc., USA.

E-mail: sub@scirp.org

COPYRIGHT

Copyright©2012 Scientific Research Publishing, Inc.

All Rights Reserved. No part of this publication may be reproduced, stored in a retrieval system, or transmitted, in any form or by any means, electronic, mechanical, photocopying, recording, scanning or otherwise, except as described below, without the permission in writing of the Publisher.

Copying of articles is not permitted except for personal and internal use, to the extent permitted by national copyright law, or under the terms of a license issued by the national Reproduction Rights Organization.

Requests for permission for other kinds of copying, such as copying for general distribution, for advertising or promotional purposes, for creating new collective works or for resale, and other enquiries should be addressed to the Publisher.

Statements and opinions expressed in the articles and communications are those of the individual contributors and not the statements and opinion of Scientific Research Publishing, Inc. We assume no responsibility or liability for any damage or injury to persons or property arising out of the use of any materials, instructions, methods or ideas contained herein. We expressly disclaim any implied warranties of merchantability or fitness for a particular purpose. If expert assistance is required, the services of a competent professional person should be sought.

PRODUCTION INFORMATION

For manuscripts that have been accepted for publication, please contact:

E-mail: ojpathology@scirp.org



Open Journal of Pathology

ISSN: 2164-6775 (Print) ISSN: 2164-6783 (Online)
<http://www.scirp.org/journal/ojpathology>

Open Journal of Pathology is an international journal dedicated to the latest advancement of pathology. The goal of this journal is to provide a platform for researchers and academics all over the world to promote, share, and discuss various new issues and developments in pathology related problems. All manuscripts must be prepared in English, and are subject to a rigorous and fair peer-review process. Accepted papers will immediately appear online followed by printed hard copy.

Editorial Board

Dr. Asmaa Gaber Abdou
 Dr. Julio Aliberti
 Prof. Javier Azúa-Romeo
 Dr. Roberto Bei
 Dr. Giuliano Bettini
 Dr. Renald Blundell
 Prof. Valquiria Bueno
 Dr. Kailash C. Chadha
 Prof. Nam Hoon Cho
 Dr. Elahé T. Crockett
 Dr. Qinghua Cui
 Prof. Jan M. A. Delabie
 Dr. Patricia DeVilliers

Dr. Paul C. Evans
 Prof. Reza Hakkak
 Dr. Adriana Handra-Luca
 Prof. Kazim Husain
 Prof. Mansour F. Hussein
 Prof. Lidia Larizza
 Dr. Chien-Feng Li
 Dr. Anthony W. I. Lo
 Prof. Franco Laghi Pasini
 Prof. Churilov Leonid Pavlovich
 Dr. George Perry
 Dr. Daniela Quaglini
 Dr. Sophia Ran

Prof. Jianyu Rao
 Prof. K. S. Ratnakar
 Dr. Mohammed S. Razzaque
 Prof. Matteo A. Russo
 Dr. Kunihiro Sakuma
 Prof. Gene P. Siegal
 Dr. Gloria H. Su
 Prof. Takuji Tanaka
 Dr. Ming Qian Wei
 Prof. Han-Seung Yoon
 Dr. Xiaofeng Charles Zhou

Subject Coverage

The journal publishes original papers including but not limited to the following fields:

- Anatomical Pathology
- Clinical Pathology
- Dermatopathology
- Forensic Pathology
- Molecular Pathology
- Oral and Maxillofacial Pathology
- Pathochemistry
- Pathology History
- Pathophysiology
- Plant Pathology
- Psychopathology
- Veterinary Pathology

We are also interested in: 1) Short reports—2-5 page papers where an author can either present an idea with theoretical background but has not yet completed the research needed for a complete paper or preliminary data; 2) Book reviews—Comments and critiques.

Notes for Intending Authors

Submitted papers should not have been previously published nor be currently under consideration for publication elsewhere. Paper submission will be handled electronically through the website. All papers are refereed through a peer review process. For more details about the submissions, please access the website.

Website and E-Mail

<http://www.scirp.org/journal/ojpathology>

E-mail: ojpathology@scirp.org