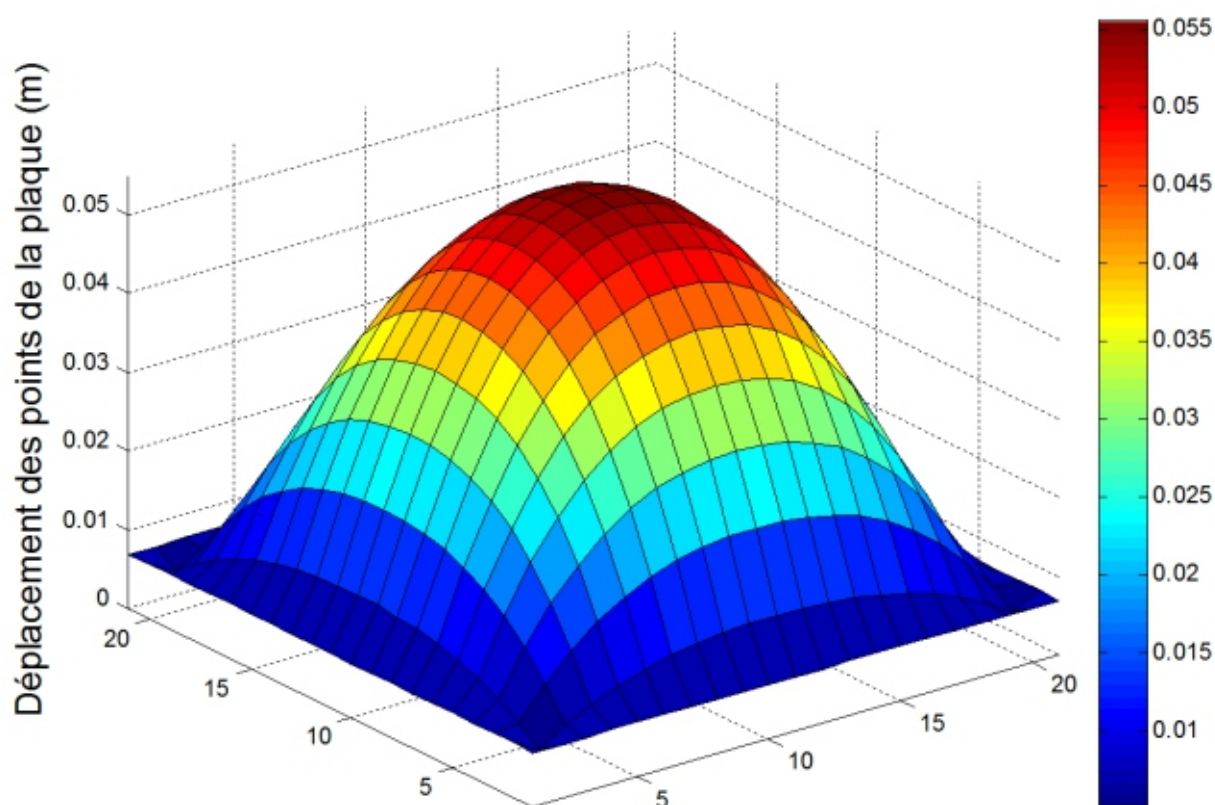


Open Journal of Civil Engineering



ISSN: 2164-3164



Journal Editorial Board

ISSN Print: 2164-3164 ISSN Online: 2164-3172

<http://www.scirp.org/journal/ojce/>

Editor-in-Chief

Dr. Hwai-Chung Wu

Wayne State University, USA

Editorial Board

Prof. Alireza Afshari

Aalborg University, Denmark

Dr. Ayman Batisha

Ministry of Water Resources and Irrigation, Egypt

Prof. Fabio Bisegna

Sapienza University of Rome, Italy

Prof. Christopher Chao

The Hong Kong University of Science and Technology, China

Prof. Carlos Chastre

NOVA University of Lisbon, Portugal

Dr. Cristina Gentilini

University of Bologna, Italy

Dr. Raja Rizwan Hussain

King Saud University, Saudi Arabia

Prof. Jian Kang

University of Sheffield, UK

Dr. Vojko Kilar

University of Ljubljana, Slovenia

Prof. Kiyoshi Kobayashi

Kyoto University, Japan

Dr. Triantafyllos Makarios

Aristotle University of Thessalonik, Greece

Prof. George C. Manos

Aristotle University of Thessaloniki, Greece

Prof. Ali M. Memari

Pennsylvania State University, USA

Prof. Low Sui Pheng

National University of Singapore, Singapore

Prof. Miroslav Premrov

University of Maribor, Slovenia

Prof. Nicola Pugno

University of Trento, Italy

Dr. Ahmad Qasaimeh

Department of Civil Engineering, Jordan

Dr. Gian A. Rassati

University of Cincinnati, USA

Dr. Rehan Sadiq

University of British Columbia, Canada

Prof. Evangelos J. Sapountzakis

National Technical University of Athens, Greece

Prof. Mehdi Setareh

Virginia Tech University, USA

Prof. Wen-Pei Sung

National Chin-Yi University of Technology, Chinese Taipei

Prof. Chong-Shien Tsai

Feng Chia University, Chinese Taipei

Prof. Francesco Ubertini

University of Bologna, Italy

Dr. Roberto Valentino

University of Parma, Italy

Dr. Heng Wei

The University of Cincinnati, USA

Dr. I-Tung Yang

National Taiwan University of Science and Technology, Chinese Taipei

Prof. Ka-Veng Yuen

University of Macau, China

Prof. Vahid Zanjani Zadeh

Bechtel Corporation, USA

Prof. Jun Zhang

Tsinghua University, China

Table of Contents

Volume 5 Number 2

June 2015

Analysis of Control Measures for Settlement of Differences on the Problems of Highway Subgrade Widening	
Y. Y. Wang.....	149
Seismic Capacity Assessment of Existing RC Buildings in The Sudan by Using Pushover Analysis	
M. Ismaeil, M. Sobaih, A. Akl.....	154
Studies on Strength and Related Properties of Concrete Incorporating Aggregates from Demolished Wastes: Part 2—Compressive and Flexural Strengths	
M. T. Gumedé, S. O. Franklin.....	175
Applications and Prospects of Fiber Reinforced Concrete in Industrial Floors	
H. Alsharie.....	185
Evaluation of Water Distribution Jointed Pipe Networks under Transient Ground Motions	
A. Boorboor, M. Hosseini.....	190
Effects of Building Configuration on Seismic Performance of RC Buildings by Pushover Analysis	
Y. Alashker, S. Nazar, M. Ismaiel.....	203
Effect of Using Stone Cutting Slurry Waste (Al-Khamkha) on the Compaction Characteristics of Jerash Cohesive Soil	
T. Masoud.....	214
Computational Finite Element Modelling of Structural Behaviours of Precast Sandwiched Foamed Concrete Slab	
K. Ukanwa, N. Mohamad, J. B. P. Lim.....	220
Comparative Studies of Steel, Bamboo and Rattan as Reinforcing Bars in Concrete: Tensile and Flexural Characteristics	
A. P. Adewuyi, A. A. Otukoya, O. A. Olaniyi, O. S. Olafusi.....	228
Compressive and Flexural Behaviour of Unstressed Concrete Substructure in Cassava Effluent Contaminated Soils	
A. P. Adewuyi, O. A. Olaniyi, O. S. Olafusi, A. S. Fawumi.....	239

Influence of Mechanical Properties of Concrete and Soil on Solicitations of Mat Foundation

O. A. Sall, M. Ba, M. Ndiaye, D. Sangare, M. Fall, A. Thiam.....249

Analysis of the Probability Model of Wind Load on the Offshore Wind Turbine

B. W. Jiang, M. J. Zhao, P. Liu, Z. Y. Tang.....261

Open Journal of Civil Engineering (OJCE)

Journal Information

SUBSCRIPTIONS

The *Open Journal of Civil Engineering* (Online at Scientific Research Publishing, www.SciRP.org) is published quarterly by Scientific Research Publishing, Inc., USA.

Subscription rates:

Print: \$79 per issue.

To subscribe, please contact Journals Subscriptions Department, E-mail: sub@scirp.org

SERVICES

Advertisements

Advertisement Sales Department, E-mail: service@scirp.org

Reprints (minimum quantity 100 copies)

Reprints Co-ordinator, Scientific Research Publishing, Inc., USA.

E-mail: sub@scirp.org

COPYRIGHT

COPYRIGHT AND REUSE RIGHTS FOR THE FRONT MATTER OF THE JOURNAL:

Copyright © 2015 by Scientific Research Publishing Inc.

This work is licensed under the Creative Commons Attribution International License (CC BY).

<http://creativecommons.org/licenses/by/4.0/>

COPYRIGHT FOR INDIVIDUAL PAPERS OF THE JOURNAL:

Copyright © 2015 by author(s) and Scientific Research Publishing Inc.

REUSE RIGHTS FOR INDIVIDUAL PAPERS:

Note: At SCIRP authors can choose between CC BY and CC BY-NC. Please consult each paper for its reuse rights.

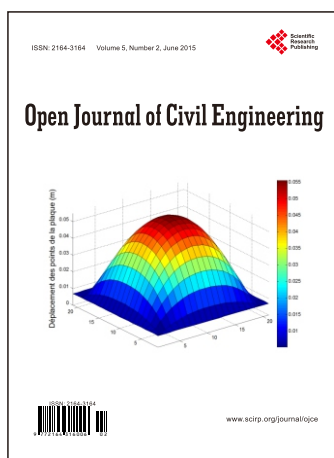
DISCLAIMER OF LIABILITY

Statements and opinions expressed in the articles and communications are those of the individual contributors and not the statements and opinion of Scientific Research Publishing, Inc. We assume no responsibility or liability for any damage or injury to persons or property arising out of the use of any materials, instructions, methods or ideas contained herein. We expressly disclaim any implied warranties of merchantability or fitness for a particular purpose. If expert assistance is required, the services of a competent professional person should be sought.

PRODUCTION INFORMATION

For manuscripts that have been accepted for publication, please contact:

E-mail: ojce@scirp.org



Call for Papers

Open Journal of Civil Engineering

ISSN Print: 2164-3164 ISSN Online: 2164-3172

<http://www.scirp.org/journal/ojce/>

Open Journal of Civil Engineering (OJCE) is an international journal dedicated to the latest advancement of civil engineering. The goal of this journal is to provide a platform for scientists and academicians all over the world to promote, share, and discuss various new issues and developments in different areas of civil engineering.

Editor-in-Chief

Dr. Hwai-Chung Wu

Wayne State University, USA

Editorial Board

Prof. Alireza Afshari
Dr. Ayman Batisha
Prof. Fabio Bisegna
Prof. Christopher Chao
Prof. Carlos Chastre
Dr. Cristina Gentilini
Dr. Raja Rizwan Hussain
Prof. Jian Kang
Dr. Vojko Kilar
Prof. Kiyoshi Kobayashi

Dr. Triantafyllos Makarios
Prof. George C. Manos
Prof. Ali M. Memari
Prof. Low Sui Pheng
Prof. Miroslav Premrov
Prof. Nicola Pugno
Dr. Gian A. Rassati
Dr. Rehan Sadiq
Prof. Evangelos J. Sapountzakis
Prof. Mehdi Setareh

Prof. Wen-Pei Sung
Prof. Chong-Shien Tsai
Prof. Francesco Ubertini
Dr. Roberto Valentino
Dr. Heng Wei
Dr. I-Tung Yang
Prof. Ka-Veng Yuen
Prof. Jun Zhang

Subject Coverage

All manuscripts must be prepared in English, and are subject to a rigorous and fair peer-review process. Accepted papers will immediately appear online followed by printed hard copy. The journal publishes original papers including but not limited to the following fields:

- Assemblage and System
- Behavior of Structures
- Behavior of Structures under Seismic Loads
- Building and Environmental Acoustics
- Building Climate Systems
- Building Energy
- Civil and Environmental Engineering
- Coastal Engineering
- Composite Materials
- Concrete Structures
- Construction Economics
- Construction Engineering
- Design and Performance of Green Building
- Design Optimization of Structures
- Earthquake Engineering
- Energy Efficient Building Technology
- Energy Saving Building Materials
- Evaluation of Building Envelope Systems under
- Structural and Environmental Loads
- Evaluation of Glazing Systems for Energy Performance
- Fire Engineering
- Foundations Dynamics
- Geotechnical Engineering
- Health Monitoring and Life Prediction of Structures
- High Performance Concrete
- Hydraulic Engineering
- Life Cycle Engineering
- Materials and Durability
- Materials Engineering
- Mechanics and Materials Aspects of Advanced Construction Materials
- Municipal or Urban Engineering
- Nondestructive Testing and Evaluation
- Numerical Modelling of Structures
- Optimal Design of Structures
- Properties and Mechanics of Concrete
- Residential, Commercial, Industrial and Public Works
- Seismic Evaluation of Building Nonstructural Components
- Simulation Optimization and Risk Management
- Soil-Structure Interaction
- Structural Engineering
- Structural Evaluation of Panelized and Masonry Wall Systems
- Structural Reliability Analysis
- Surveying
- Sustainable Structures
- Transportation Engineering
- Ventilation and Indoor Air Quality
- Water Supply and Drainage

We are also interested in: 1) Short Reports—2-5 page papers where an author can either present an idea with theoretical background but has not yet completed the research needed for a complete paper or preliminary data; 2) Book Reviews—Comments and critiques.

Notes for Intending Authors

Submitted papers should not have been previously published nor be currently under consideration for publication elsewhere. Paper submission will be handled electronically through the website. All papers are refereed through a peer review process. For more details about the submissions, please access the website.

Website and E-Mail

<http://www.scirp.org/journal/ojce/>

E-mail: ojce@scirp.org