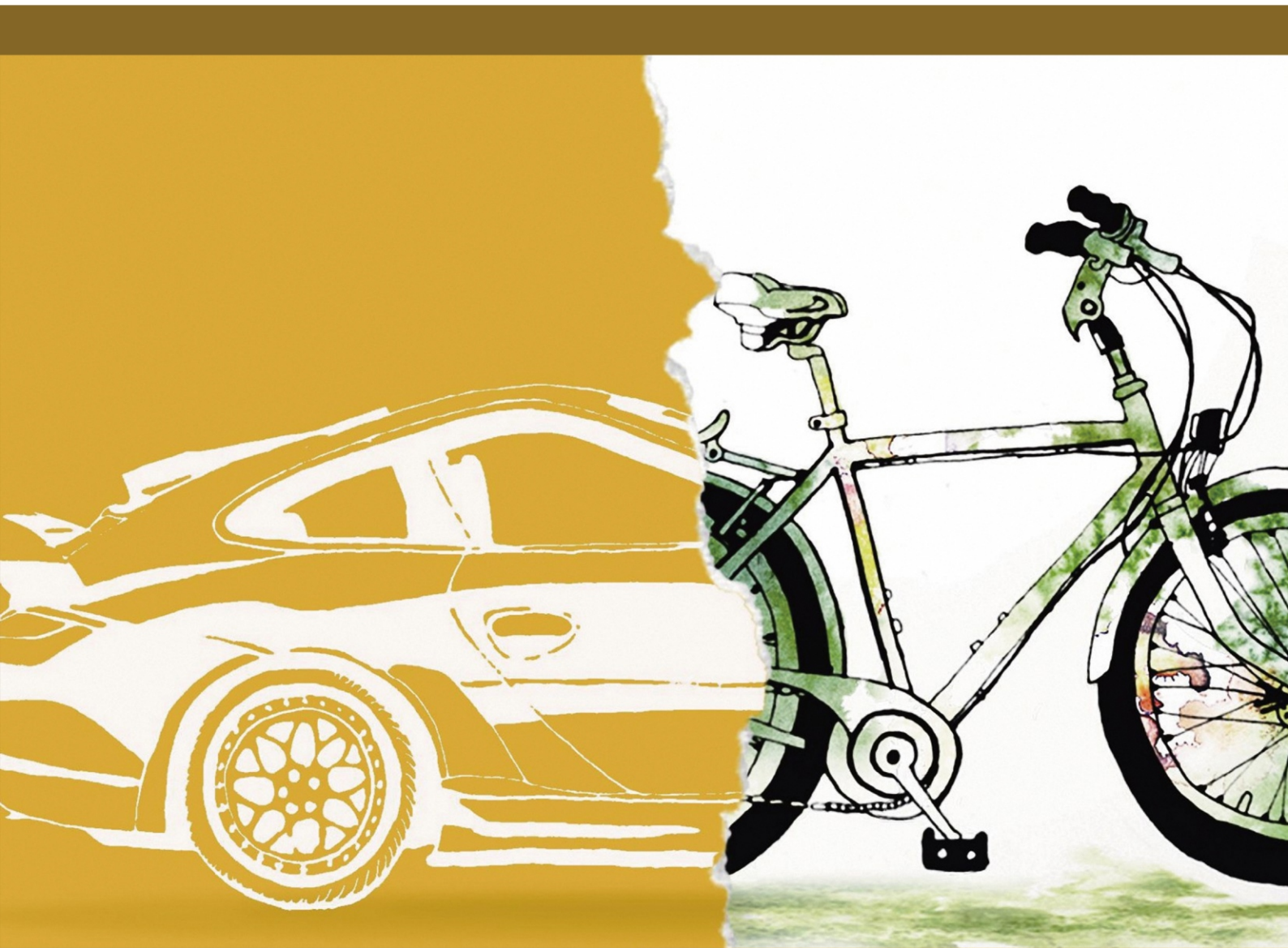


Low Carbon Economy



ISSN: 2158-7000



<https://www.scirp.org/journal/lce>

Journal Editorial Board

ISSN: 2158-7000 (Print) ISSN: 2158-7019 (Online)

<https://www.scirp.org/journal/lce>

Editor-in-Chief

Prof. Lu Aye

The University of Melbourne, Australia

Editorial Board

Prof. Elettra Agliardi

University of Bologna, Italy

Prof. Wojciech M. Budzianowski

Wroclaw University of Technology, Poland

Prof. Yanpeng Cai

Beijing Normal University, China

Prof. Yuan-Hsiou Chang

MingDao University, Chinese Taipei

Prof. Bin Chen

Beijing Normal University, China

Prof. Guoqian Chen

Peking University, China

Dr. T. S. Devaraja

University of Mysore, India

Prof. Steven M. Hoffman

University of St. Thomas, USA

Prof. Gordon Huang

University of Regina, Canada

Dr. Yosef Jabareen

Technion-Israel Institute of Technology, Israel

Prof. Rüdiger Kiesel

Oslo University, Norway

Prof. Won-Joon Kim

Korea Advanced Institute of Science and Technology, South Korea

Prof. Shun-Chung Lee

National Cheng Kung University, Chinese Taipei

Prof. Feng Li

Chinese Academy of Sciences, China

Prof. Yihe Lv

Chinese Academy of Sciences, China

Prof. Tadeu Fabricio Malheiros

University of Sao Paulo, Brazil

Prof. Bashar Malkawi

College of Law, University of Sharjah, UAE

Prof. Nelson Martins

Aveiro University, Portugal

Prof. Satoru Okamoto

Shimane University, Japan

Dr. Annarita Paiano

University of Bari Aldo Moro, Italy

Prof. Yundong Wang

Tsinghua University, China

Dr. Kua Harn Wei

National University of Singapore, Singapore

Prof. Tamim Younos

The Cabell Brand Center for Global Poverty and Resource Sustainability
Studies, USA

Table of Contents

Volume 11 Number 2

June 2020

Exploring Potential Participation of Vietnam in the Carbon Market

M. K. Lien, N. D. Huyen, N. T. Cong, N. V. Minh.....25

Low Carbon Economy (LCE) Journal Information

SUBSCRIPTIONS

The *Low Carbon Economy* (Online at Scientific Research Publishing, <https://www.scirp.org/>) is published quarterly by Scientific Research Publishing, Inc., USA.

Subscription rates:

Print: \$79 per issue.

To subscribe, please contact Journals Subscriptions Department, E-mail: sub@scirp.org

SERVICES

Advertisements

Advertisement Sales Department, E-mail: service@scirp.org

Reprints (minimum quantity 100 copies)

Reprints Co-ordinator, Scientific Research Publishing, Inc., USA.

E-mail: sub@scirp.org

COPYRIGHT

Copyright and reuse rights for the front matter of the journal:

Copyright © 2020 by Scientific Research Publishing Inc.

This work is licensed under the Creative Commons Attribution International License (CC BY).

<http://creativecommons.org/licenses/by/4.0/>

Copyright for individual papers of the journal:

Copyright © 2020 by author(s) and Scientific Research Publishing Inc.

Reuse rights for individual papers:

Note: At SCIRP authors can choose between CC BY and CC BY-NC. Please consult each paper for its reuse rights.

Disclaimer of liability

Statements and opinions expressed in the articles and communications are those of the individual contributors and not the statements and opinion of Scientific Research Publishing, Inc. We assume no responsibility or liability for any damage or injury to persons or property arising out of the use of any materials, instructions, methods or ideas contained herein. We expressly disclaim any implied warranties of merchantability or fitness for a particular purpose. If expert assistance is required, the services of a competent professional person should be sought.

PRODUCTION INFORMATION

For manuscripts that have been accepted for publication, please contact:

E-mail: lce@scirp.org



Low Carbon Economy

ISSN: 2158-7000 (Print) ISSN: 2158-7019 (Online)

<https://www.scirp.org/journal/lce>

Low Carbon Economy (LCE) is a peer reviewed international journal dedicated to the latest advancement of low carbon economy. The goal of this journal is to keep a record of the state-of-the-art research and to promote study, research and improvement within its various specialties.

Editor-in-Chief

Prof. Lu Aye

Editorial Board

Prof. Elettra Agliardi
Prof. Wojciech M. Budzianowski
Prof. Yanpeng Cai
Prof. Yuan-Hsiou Chang
Prof. Bin Chen
Prof. Guoqian Chen
Dr. T. S. Devaraja
Prof. Steven M. Hoffman

Prof. Gordon Huang
Dr. Yosef Jabareen
Prof. Rüdiger Kiesel
Prof. Won-Joon Kim
Prof. Shun-Chung Lee
Prof. Feng Li
Prof. Yihe Lv
Prof. Tadeu Fabricio Malheiros

Prof. Bashar Malkawi
Prof. Nelson Martins
Prof. Satoru Okamoto
Dr. Annarita Paiano
Prof. Yundong Wang
Dr. Kua Harn Wei
Prof. Tamim Younos

Subject Coverage

All manuscripts must be prepared in English, and are subject to a rigorous and fair peer-review process. Accepted papers will immediately appear online followed by printed hard copy. The journal publishes original papers including but not limited to the following fields:

- Avoiding Dangerous Climate Change
- Carbon Financing and Markets
- Carbon Neutrality
- Carbon Process Management
- Carbon Taxation
- Clean Development Mechanism, Joint Implementation
- Climate Change
- Coal Phase Out
- Corporate Low Carbon Strategies
- Ecological Consumer Behaviour
- Ecological Reforms
- Electric Vehicle
- Emission Standard
- Emissions Trading
- Energy Consumption
- Energy Management
- Energy Neutral Design
- Energy Policy
- Energy Production
- Environmental and Clean Technologies
- Environmental Economics
- Fossil Fuels Resources and Consumption, Markets and Policies
- Green Economy and Sustainable Development
- Industrial Revolution
- Low Carbon Building
- Low Carbon Communities
- Low Carbon Diet
- Low Carbon Emission
- Low Carbon Fuel Standard
- Low Carbon Public Policies at Different Scales, from Local to International
- Mobile Emission Reduction Credit (MERC)
- Petroleum Phase Out
- Renewable-Energy Economy
- Renewable Heat
- Sustainable Development
- Vegetable Oil Economy
- World Energy Resources and Consumption

LCE publishes different types of papers: applied research articles are original academic contributions analysing a specific topic or issue and discussing the policy implications; case-studies discuss an in-depth investigation of a firm(s) or country(ies) initiative; surveys, which present the state-of-the-art of the literature on a specific topic or issue; short position papers, which are mostly related to very specific policy issues. We also publish Special Issues on specific topics.

Notes for Intending Authors

Your paper should not have been previously published or be currently under consideration for publication any place else. Submit your paper electronically through the LCE online system. All papers are subject to peer review. After your paper has been accepted, you must sign a copyright transfer agreement with LCE. Papers accepted for publication will be available free online. A fee will be charged to cover the publication cost. Manuscripts must be written in English.

Website and E-Mail

<https://www.scirp.org/journal/lce>

E-mail: lce@scirp.org

What is SCIRP?

Scientific Research Publishing (SCIRP) is one of the largest Open Access journal publishers. It is currently publishing more than 200 open access, online, peer-reviewed journals covering a wide range of academic disciplines. SCIRP serves the worldwide academic communities and contributes to the progress and application of science with its publication.

What is Open Access?

All original research papers published by SCIRP are made freely and permanently accessible online immediately upon publication. To be able to provide open access journals, SCIRP defrays operation costs from authors and subscription charges only for its printed version. Open access publishing allows an immediate, worldwide, barrier-free, open access to the full text of research papers, which is in the best interests of the scientific community.

- High visibility for maximum global exposure with open access publishing model
- Rigorous peer review of research papers
- Prompt faster publication with less cost
- Guaranteed targeted, multidisciplinary audience



**Scientific
Research
Publishing**

Website: <https://www.scirp.org>

Subscription: sub@scirp.org

Advertisement: service@scirp.org