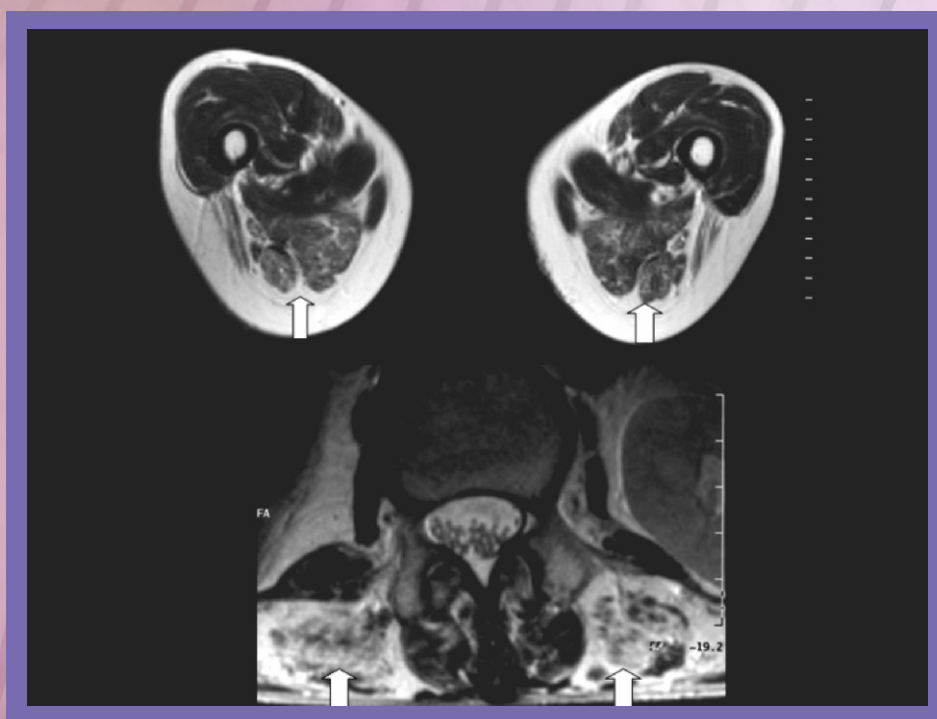




International Journal of Clinical Medicine



ISSN: 2158-284X



Journal Editorial Board

ISSN: 2158-284X (Print) ISSN: 2158-2882 (Online)

<http://www.scirp.org/journal/ijcm>

Editor-in-Chief

Dr. Michael L. Moritz

University of Pittsburgh School of Medicine, USA

Editorial Board

Dr. Marc Afilalo

McGill University, Canada

Dr. Siamak Bidel

University of Helsinki, Finland

Prof. Trond Buanes

University of Oslo, Norway

Prof. Long-Sheng Chang

The Ohio State University, USA

Dr. David Cheng

University Hospital Case Medical Center, USA

Prof. Kent-Man Chu

The University of Hong Kong, Hong Kong (China)

Prof. Yunfeng Cui

Tianjin Medical University, China

Prof. Jeffrey L. Geller

University of Massachusetts Medical School, USA

Prof. Kuruvilla George

Peter James Centre, Australia

Prof. Karen Goodman

Montclair State University, USA

Prof. Gerard A. Hutchinson

University of the West Indies, Trinidad-and-Tobago

Prof. Bharat K. Kantharia

The University of Texas Health Science Center, USA

Prof. Shinya Kimura

Saga University, Japan

Prof. Norberto Krivoy

Rambam Medical Center, Israel

Dr. Valery Leytin

University of Toronto, Canada

Dr. Lawrence A. Mark

Indiana University, USA

Dr. Edward P. Monico

Yale University

Prof. Raul R. Silva

New York University, USA

Prof. Yong Sang Song

Seoul National University, Korea (South)

Dr. Ron G. Stout

Middle Tennessee Mental Health Institute, USA

Dr. Zheng Su

Genentech Inc., USA

Dr. Joris Cornelis Verster

Utrecht University, Netherlands

Dr. Jue Wang

University of Nebraska, USA

Dr. Li Xu

Northwestern University, USA

Guest Reviewers

Kenneth Conklin

Gwen Lee-Dukes

Philip Steer

TABLE OF CONTENTS

Volume 3 Number 3

May 2012

Health from the Hive: Potential Uses of Propolis in General Health

E. Shruthi, B. S. Suma.....159

Lipid Replacement Therapy with a Glycophospholipid Formulation with NADH and CoQ10 Significantly Reduces Fatigue in Intractable Chronic Fatiguing Illnesses and Chronic Lyme Disease Patients

G. L. Nicolson, R. Settineri, R. Ellithorpe.....163

Mortality Rate and Outcome among Patients Admitted to General Intensive Care Unit during “Morning-Hour” Compared with “Off-Hour”

S. Ala, N. Pakravan, M. Ahmadi.....171

Study of Cardiac Manifestations in Patients with HIV Infection and Their Correlation with CD4 Count in Indian Population

A. Singh, S. Das, R. K. Dalai.....178

A Study on Stroke in Young and Elderly in Rajiv Gandhi Government General Hospital, Chennai

P. Chitrambalam, D. Baskar, S. Revathy.....184

A Patient with Intravenous Immunoglobulin-Responsive Lower Motor Neuron Syndrome

T. Kessoku, T. Koide, K. Akiyama, S. Irie, T. Ishihara, F. Yoshii.....190

Factors Associated with Excessive Daytime Sleepiness in Obstructive Sleep Apnea Syndrome under CPAP Treatment

W. Yamadera, S. Chiba, M. Iwashita, R. Aoki, D. Harada, M. Sato, H. Moriwaki, K. Obuchi, M. Ozone,
S. Nishino, H. Itoh, K. Nakayama.....194

Neuropsychological and Neurological Deficits in Obsessive-Compulsive Disorder: The Role of Comorbid Depression

H. Ghassemzadeh, R. Mojtabei, N. Karamghadiri, M. Noroozian, V. Sharifi, N. Ebrahimkhani.....200

Features of Color Characteristics of Blood Plasma of Patients with Liver Cirrhosis in the Colorimetric System XYZ as Compared with Healthy People

M. Dolomatov, N. Kalashchenko, S. Dezortsev, T. Araslanov.....211

Different Clinical Phenotypes in Adams-Oliver Syndrome Conservative Approach to Aplasia Cutis: A Report of Two Cases

F. Dini, C. Tuoni, A. Nannipieri, S. Lunardi, R. T. Scaramuzzo, L. D’Accavio, B. Kuppers, A. Valetto, A. Bartalena,
A. Boldrini, P. Ghirri.....215

Gross Tumour of Minor Salivary Glands in HIV Sero-Positive Patient

J. V. F. Fogha, G. A. Ngulefac, E. G. S. Minka Ngom, V. Fonyam, L. R. Njock.....220

Hypersensitivity Reaction to Misoprostol—A Case Report

M. Madaan, M. Puri, R. Sharma, S. S. Trivedi.....223

Milk Intoxication—A Case Report

A. N. Bastick, J. J. Bakker, R. Wulkan, J. M. M. Boots.....225

Hemophilic Pseudotumor: A Case Report and Review of Literature

A. Pakala, J. Thomas, P. Comp.....229

Bilateral Tibial Xanthoma in a Normolipidemic Patient—Report of a Rare Case with Review of Literature

V. K. Chakravarthi, E. Aruna, D. N. C. Rao, D. R. Rao.....234

The Risk of Cesarean Delivery in Short Saudi Women

N. H. Al Qahtani, S. Al Ganmi, A. Badran.....238

The figure on the front cover is from the article published in Journal of Clinical Medicine, 2012, Vol. 3, No. 3, pp. 190-193 by Takaomi Kessoku, *et al.*

International Journal of Clinical Medicine (IJCM)

Journal Information

SUBSCRIPTIONS

The *International Journal of Clinical Medicine* (Online at Scientific Research Publishing, www.SciRP.org) is published bimonthly by Scientific Research Publishing, Inc., USA.

Subscription rates:

Print: \$39 per issue.

To subscribe, please contact Journals Subscriptions Department, E-mail: sub@scirp.org

SERVICES

Advertisements

Advertisement Sales Department, E-mail: service@scirp.org

Reprints (minimum quantity 100 copies)

Reprints Co-ordinator, Scientific Research Publishing, Inc., USA.

E-mail: sub@scirp.org

COPYRIGHT

Copyright©2012 Scientific Research Publishing, Inc.

All Rights Reserved. No part of this publication may be reproduced, stored in a retrieval system, or transmitted, in any form or by any means, electronic, mechanical, photocopying, recording, scanning or otherwise, except as described below, without the permission in writing of the Publisher.

Copying of articles is not permitted except for personal and internal use, to the extent permitted by national copyright law, or under the terms of a license issued by the national Reproduction Rights Organization.

Requests for permission for other kinds of copying, such as copying for general distribution, for advertising or promotional purposes, for creating new collective works or for resale, and other enquiries should be addressed to the Publisher.

Statements and opinions expressed in the articles and communications are those of the individual contributors and not the statements and opinion of Scientific Research Publishing, Inc. We assumes no responsibility or liability for any damage or injury to persons or property arising out of the use of any materials, instructions, methods or ideas contained herein. We expressly disclaim any implied warranties of merchantability or fitness for a particular purpose. If expert assistance is required, the services of a competent professional person should be sought.

PRODUCTION INFORMATION

For manuscripts that have been accepted for publication, please contact:

E-mail: ijcm@scirp.org



International Journal of Clinical Medicine

<http://www.scirp.org/journal/ijcm>

International Journal of Clinical Medicine (IJCM) is a peer reviewed journal dedicated to the latest advancement of clinical medicine. The goal of this journal is to keep a record of the state-of-the-art research and to promote study, research and improvement within its various specialties.

Subject Coverage

The journal publishes original papers including but not limited to the following fields:

- Allergy and Clinical Immunology
- Cancer Research and Clinical Oncology
- Clinical Anaesthesiology
- Clinical Anatomy
- Clinical and Applied Thrombosis/Hemostasis
- Clinical and Experimental Allergy
- Clinical and Experimental Dermatology
- Clinical and Experimental Hypertension
- Clinical and Experimental Immunology
- Clinical and Experimental Medicine
- Clinical and Experimental Metastasis
- Clinical and Experimental Nephrology
- Clinical and Experimental Ophthalmology
- Clinical and Experimental Optometry
- Clinical and Experimental Otorhinolaryngology
- Clinical and Experimental Pathology
- Clinical and Experimental Pharmacology and Physiology
- Clinical and Molecular Allergy
- Clinical and Translational Oncology
- Clinical Anesthesia
- Clinical Apheresis
- Clinical Autonomic Research
- Clinical Biochemistry and Nutrition
- Clinical Biomechanics
- Clinical Cardiology
- Clinical Case Studies
- Clinical Child Psychology and Psychiatry
- Clinical Chiropractic
- Clinical Densitometry
- Clinical Effectiveness in Nursing
- Clinical Endocrinology and Metabolism
- Clinical Epidemiology
- Clinical Forensic Medicine
- Clinical Gastroenterology and Hepatology
- Clinical Genetics
- Clinical Haematology
- Clinical Hypertension
- Clinical Imaging
- Clinical Immunology
- Clinical Implant Dentistry and Related Research
- Clinical Interventions in Aging
- Clinical Laboratory Analysis
- Clinical Linguistics & Phonetics
- Clinical Lipidology
- Clinical Microbiology and Antimicrobials
- Clinical Microbiology and Infection
- Clinical Microbiology and Infectious Diseases
- Clinical Molecular Pathology
- Clinical Monitoring and Computing
- Clinical Neurology and Neurosurgery
- Clinical Neuropsychology
- Clinical Neuropsychology
- Clinical Neuroradiology
- Clinical Neuroscience
- Clinical Nursing
- Clinical Nutrition
- Clinical Obstetrics and Gynaecology
- Clinical Oncology and Cancer Research
- Clinical Oral Implants Research
- Clinical Oral Investigations
- Clinical Orthopaedics and Related Research
- Clinical Otolaryngology
- Clinical Pathology
- Clinical Pediatric Emergency Medicine
- Clinical Periodontology
- Clinical Pharmacology & Toxicology
- Clinical Pharmacy and Therapeutics
- Clinical Physiology and Functional Imaging
- Clinical Practice and Epidemiology in Mental Health
- Clinical Psychology and Psychotherapy
- Clinical Psychology in Medical Settings
- Clinical Radiology
- Clinical Rehabilitation
- Clinical Research and Regulatory Affairs
- Clinical Research in Cardiology
- Clinical Respiratory
- Clinical Rheumatology
- Clinical Simulation in Nursing
- Clinical Sleep Medicine
- Clinical Techniques in Small Animal Practice
- Clinical Therapeutics
- Clinical Toxicology
- Clinical Transplantation
- Clinical Trials
- Clinical Ultrasound
- Clinical Virology
- Complementary Therapies in Clinical Practice
- Consulting and Clinical Psychology
- Contemporary Clinical Trials
- Controlled Clinical Trials
- Diabetes Research and Clinical Practice
- Evaluation in Clinical Practice
- Fundamental & Clinical Pharmacology
- Hereditary Cancer in Clinical Practice
- Human Psychopharmacology: Clinical and Experimental
- Innovations in Clinical Neuroscience
- Laboratory and Clinical Medicine
- Neurophysiology Clinique/Clinical Neurophysiology
- Nutrition in Clinical Practice
- Pacing and Clinical Electrophysiology
- Psychiatry in Clinical Practice
- Therapeutics and Clinical Risk Management
- Veterinary Clinical Pathology

We are also interested in short papers (letters) that clearly address a specific problem, and short survey or position papers that sketch the results or problems on a specific topic. Authors of selected short papers would be invited to write a regular paper on the same topic for future issues of the *IJCM*.

Notes for Intending Authors

All manuscripts submitted to IJCM must be previously unpublished and may not be considered for publication elsewhere at any time during IJCM's review period. Paper submission will be handled electronically through the website. All papers are refereed through a peer review process. Additionally, accepted ones will immediately appear online followed by printed in hard copy. For more details about the submissions, please access the website.

Website and E-Mail

<http://www.scirp.org/journal/ijcm>

Email: ijcm@scirp.org