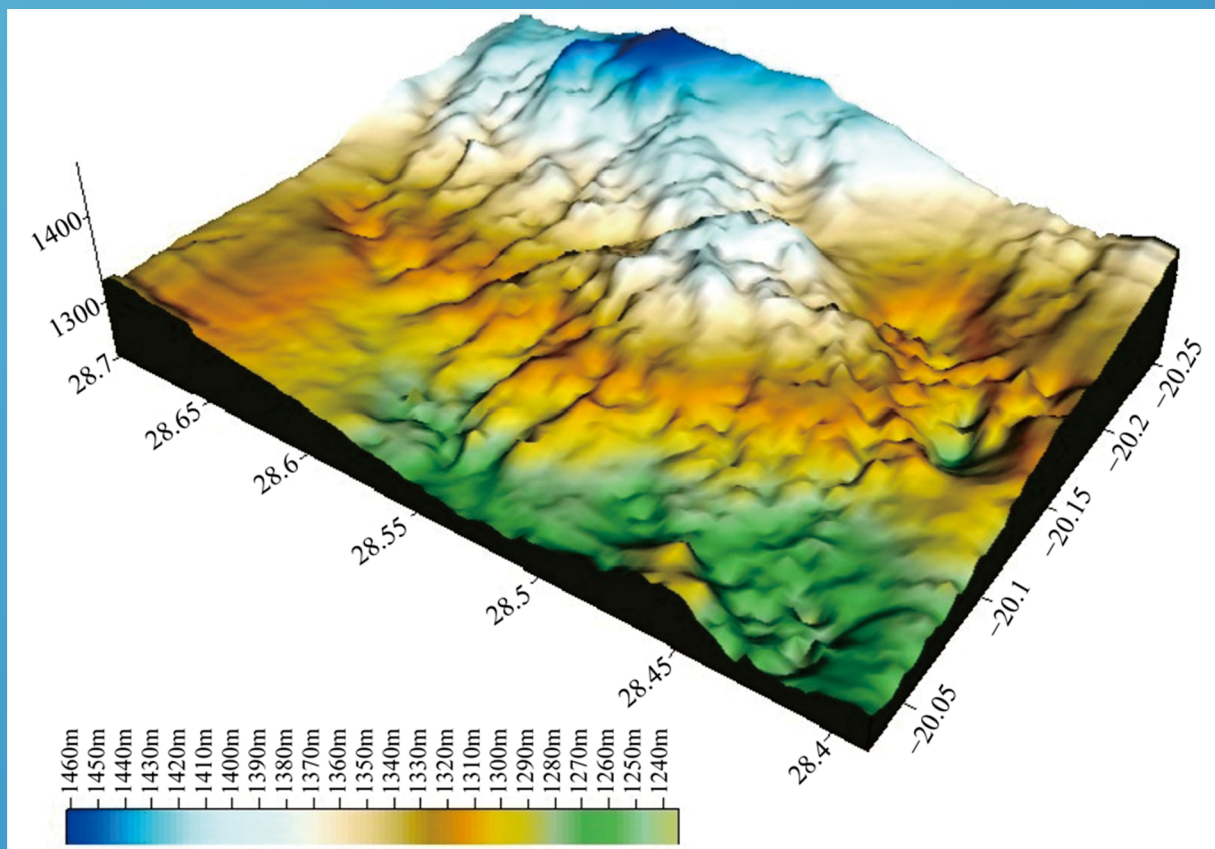


Advances in Remote Sensing



Journal Editorial Board

ISSN Print: 2169-267X

ISSN Online: 2169-2688

<http://www.scirp.org/journal/ars>

Editorial Board

Dr. Amr Abd-Elrahman	University of Florida, USA
Dr. Ram Avtar	Japan Agency for Marine-Earth Science and Technology, Japan
Dr. Yong Bian	Canada Centre for Remote Sensing, Canada
Dr. Padmanava Dash	Jackson State University, USA
Dr. Konstantinos Karantzas	National Technical University of Athens, Greece
Dr. Hyongki Lee	University of Houston, USA
Prof. Gunter Menz	University of Bonn, Germany
Dr. Wenge Ni-Meister	The City University of New York—Hunter College, USA
Dr. Thomas Oommen	Michigan Technological University, USA
Dr. Mui-How Phua	Universiti Malaysia Sabah, Malaysia
Dr. Sergey V. Samsonov	Canada Centre for Remote Sensing, Canada
Dr. Zhuosen Wang	University of Massachusetts Boston, USA
Dr. Byungyun Yang	University of South Florida, USA
Dr. Chuanrong Zhang	University of Connecticut, USA

TABLE OF CONTENTS

Volume 2 Number 2

June 2013

Performance and Challenges in Utilizing Non-Intrusive Sensors for Traffic Data Collection	
X. Yu, P. D. Prevedouros.....	45
Spectral Models for Improving Atmospheric Correction Results in Complex Oceanic Waters around India	
P. Shanmugam, M. Tholkapiyan.....	51
Compression of LiDAR Data Using Spatial Clustering and Optimal Plane-Fitting	
T. A. Ali.....	58
Crop Discrimination Using Field Hyper Spectral Remotely Sensed Data	
S. M. Arafat, M. A. Aboelghar, E. F. Ahmed.....	63
Detection of Fronts from Ocean Colour Monitor Images Using Entropic Technique: A Case Study of Meso- and Micro-Scale Chlorophyll Mapping in Bay of Bengal, India	
R. Vinuchandran, D. Ramakrishnan.....	71
A New Shadow Removal Method for Color Images	
Q. He, C.-H. H. Chu.....	77
Internet-Based Spectral Database for Different Land Covers in Egypt	
S. M. Arafat, E. Farg, M. Shokr, G. Al-Kzaz.....	85
Simulations of Seasonal and Latitudinal Variations in Leaf Inclination Angle Distribution: Implications for Remote Sensing	
K. F. Huemmmrich.....	93
Advanced Classification of Lands at TM and Envisat Images of Mongolia	
V. Battsengel, D. Amarsaikhan, Ts. Bat-Erdene, E. Egshiglen, A. Munkh-Erdene, M. Ganzorig.....	102
A Simplified Approach for Interpreting Principal Component Images	
R. P. Gupta, R. K. Tiwari, V. Saini, N. Srivastava.....	111
Analysis of a Residual Model for the Decomposition of Polarimetric SAR Data	
X. J. Bai, B. B. He, X. W. Li.....	120
Land Cover Fragmentation Using Multi-Temporal Remote Sensing on Major Mine Sites in Southern Katanga (Democratic Republic of Congo)	
L. Dupin, C. Nkono, C. Burlet, F. Muhashi, Y. Vanbrabant.....	127
Accuracy Analysis on the Automatic Registration of Multi-Source Remote Sensing Images Based on the Software of ERDAS Imagine	
D. B. Yuan, X. M. Cui, Y. H. Qiu, X. Y. Gu, L. Zhang.....	140
Application of Remote Sensing and Geographical Information Systems in Determining the Groundwater Potential in the Crystalline Basement of Bulawayo Metropolitan Area, Zimbabwe	
C. Chuma, O. O. I. Orimoogunje, D. J. Hlatywayo, J. O. Akinyede.....	149

**Monitoring Wheat and Rapeseed by Using Synchronous Optical and Radar Satellite Data—
From Temporal Signatures to Crop Parameters Estimation**

R. Fieuzal, F. Baup, C. Marais-Sicre.....162

**Evaluating Biomass of Juniper Trees (*Juniperus pinchotii*) from Imagery-Derived Canopy Area
Using the Support Vector Machine Classifier**

M. Mirik, S. Chaudhuri, B. Surber, S. Ale, R. J. Ansley.....181

**Investigating the Use of Remote Sensing and GIS Techniques to Detect Land Use and
Land Cover Change: A Review**

A. F. Alqurashi, L. Kumar.....193

The figure on the front cover is from the article published in *Advances in Remote Sensing*, 2013, Vol. 2, No. 2, pp. 149-161 by Constant Chuma, Oluwagbenga O. I. Orimoogunje, Dumisani J. Hlatywayo and Joseph O. Akinyede.

Advances in Remote Sensing (ARS)

Journal Information

SUBSCRIPTIONS

The *Advances in Remote Sensing* (Online at Scientific Research Publishing, www.SciRP.org) is published quarterly by Scientific Research Publishing, Inc., USA.

Subscription rates:

Print: \$39 per issue.

To subscribe, please contact Journals Subscriptions Department, E-mail: sub@scirp.org

SERVICES

Advertisements

Advertisement Sales Department, E-mail: service@scirp.org

Reprints (minimum quantity 100 copies)

Reprints Co-ordinator, Scientific Research Publishing, Inc., USA.

E-mail: sub@scirp.org

COPYRIGHT

Copyright©2013 Scientific Research Publishing, Inc.

All Rights Reserved. No part of this publication may be reproduced, stored in a retrieval system, or transmitted, in any form or by any means, electronic, mechanical, photocopying, recording, scanning or otherwise, except as described below, without the permission in writing of the Publisher.

Copying of articles is not permitted except for personal and internal use, to the extent permitted by national copyright law, or under the terms of a license issued by the national Reproduction Rights Organization.

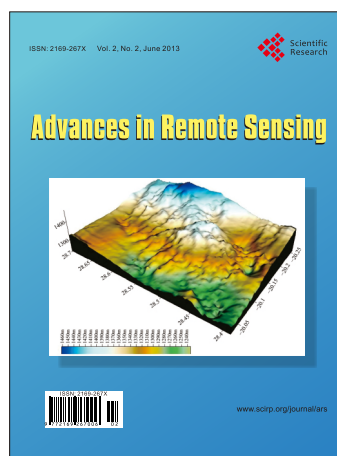
Requests for permission for other kinds of copying, such as copying for general distribution, for advertising or promotional purposes, for creating new collective works or for resale, and other enquiries should be addressed to the Publisher.

Statements and opinions expressed in the articles and communications are those of the individual contributors and not the statements and opinion of Scientific Research Publishing, Inc. We assume no responsibility or liability for any damage or injury to persons or property arising out of the use of any materials, instructions, methods or ideas contained herein. We expressly disclaim any implied warranties of merchantability or fitness for a particular purpose. If expert assistance is required, the services of a competent professional person should be sought.

PRODUCTION INFORMATION

For manuscripts that have been accepted for publication, please contact:

E-mail: ars@scirp.org



Advances in Remote Sensing

ISSN Print: 2169-267X

ISSN Online: 2169-2688

<http://www.scirp.org/journal/ars>

Advances in Remote Sensing (ARS) is an openly accessible journal published quarterly. The goal of this journal is to provide a platform for scientists and academicians all over the world to promote, share, and discuss various new issues and developments in all areas of remote sensing.

Subject Coverage

All manuscripts must be prepared in English, and are subject to a rigorous peer-review process. Accepted papers will immediately appear online followed by printed in hard copy. The areas covered by Advances in Remote Sensing (ARS) include but are not limited to the following fields:

- | | |
|---|--|
| <ul style="list-style-type: none">● Advanced platforms and sensors● Agriculture, ecosystems, land cover/change, hydrology, meteorological, social● Biophysical and biogeochemical parameter modeling● Change detection● Data assimilation● Data fusion● Data receiving and engineering● Data sharing and mining● Economic surveys and cost-benefit analyses● Environment management, dissemination, decision making● Environmental monitoring● Geospatial analysis of remote sensing data● Global monitoring● Hazard, ice/snow, fire, drought, fog, pollution● Hyper-temporal remote sensing● Image processing and analysis● Image sequence analysis● Image understanding and object based image analysis● Land degradation & desertification● Land-use and land-cover change assessment | <ul style="list-style-type: none">● Land-use and land-cover change modeling● Mobile mapping sensor and data analysis● Multi-sensor approach● Nonrenewable resources and geotechnical applications● Other related principles of remote sensing● Remote sensing of mining areas● Remote sensing of wetlands● Remote sensing planning, implementation● Remote sensing program and experiment concepts● Remote sensing science, theory● Remote sensing strategic partnerships, policies, and measures● Remote sensing validation and scaling problems● Satellite instrument calibration requirements● Satellite mission requirements and implementation● Sensor characterisation● Sensor intercalibration● Sensor technology development● Spacecraft and instrument navigation● Time series analysis● Unmanned aerial vehicle (UAV)● Water quality modeling and benthic habitat classification● Wetland mapping and ecology |
|---|--|

We are also interested in: 1) Short reports—2-5 page papers where an author can either present an idea with theoretical background but has not yet completed the research needed for a complete paper or preliminary data; 2) Book reviews—Comments and critiques.

Website and E-mail

<http://www.scirp.org/journal/ars>

E-mail: ars@scirp.org

What is SCIRP?

Scientific Research Publishing (SCIRP) is one of the largest Open Access journal publishers. It is currently publishing more than 200 open access, online, peer-reviewed journals covering a wide range of academic disciplines. SCIRP serves the worldwide academic communities and contributes to the progress and application of science, by delivering superior scientific publications and scientific information solution provider that enable advancement in scientific research.

What is Open Access?

All original research papers published by SCIRP are made freely and permanently accessible online immediately upon publication. To be able to provide open access journals, SCIRP defrays operation costs from authors and subscription charges only for its printed version. Open access publishing allows an immediate, world-wide, barrier-free, open access to the full text of research papers, which is in the best interests of the scientific community.

- High visibility for maximum global exposure with open access publishing model
- Rigorous peer review of research papers
- Prompt faster publication with less cost
- Guaranteed targeted, multidisciplinary audience



Website: <http://www.scirp.org>
Subscription: sub@scirp.org
Advertisement: service@scirp.org