

Development and Testing of a Variable Rate Nitrogen Application System through an Overhead Irrigation System

Phillip B. Williams¹, Ahmad Khalilian¹, Michael W. Marshall²,
Joe Mari Maja², Haibo Liu³, Dara Park³, Ali Mirzakhani Nafchi⁴

¹Department of Agricultural Sciences, Clemson University, Clemson, USA

²Edisto Research and Education Center, Clemson University, Blackville, USA

³Department of Plant and Environmental Sciences, Clemson University, Clemson, USA

⁴Cornell University, Cooperative Extension, Ithaca, USA

Email: pbw@clemson.edu, akhl1n@clemson.edu, marsha3@clemson.edu, jmaja@clemson.edu, darap@clemson.edu, haibol@clemson.edu, anafchi@cornell.edu

How to cite this paper: Williams, P.B., Khalilian, A., Marshall, M.W., Maja, J.M., Liu, H.B., Park, D. and Nafchi, A.M. (2018) Development and Testing of a Variable Rate Nitrogen Application System through an Overhead Irrigation System. *Journal of Water Resource and Protection*, 10, 994-1011.

<https://doi.org/10.4236/jwarp.2018.1010058>

Received: September 11, 2018

Accepted: October 26, 2018

Published: October 29, 2018

Copyright © 2018 by authors and Scientific Research Publishing Inc. This work is licensed under the Creative Commons Attribution International License (CC BY 4.0).

<http://creativecommons.org/licenses/by/4.0/>



Open Access

Abstract

Nutrients are injected through overhead irrigation systems at a uniform rate in a process known as fertigation. The highly variable soils in the Southeastern US pose challenges for effective fertigation. Currently, there is no variable-rate fertigation system available to apply the correct amount of N within a field through an overhead irrigation system. Therefore, the objective of this study was to develop and test a variable-rate N application system that works independently of irrigation water flow for site-specific N application. The variable-rate fertigation system (VRFS) was designed to apply different rates N using a pulse width modulation technique. The VRFS utilized the Clemson Lateral Irrigation Control software which controlled the solenoids in each zone by turning the N supply on and off (pulsing) for each zone. In this study, four tests were conducted to determine the uniformity of the VRFS. In test # 1, the pump output showed a linear slope relationship and was the same for water and N. In test # 2, nozzle flow and uniformity were determined using four different irrigation system travel speeds at N application rates of 31, 59, 88, and 113 kg/ha. There was a strong correlation ($R^2 = 0.9998$) between irrigation system speed and N rate. In test # 3, the uniformity across the length of the irrigation system was determined. The nozzles produced an average flow of 31.1, 58.7, 87.6, and 112.7 kg N/ha with an overall average error of 0.1% across all N rates. Results also showed the system was capable of accurately applying N based on prescription maps with an error of less than 1.8%. Test # 4 was conducted to determine the accuracy of the map-based controller system for applying variable rate N. There was a strong correlation

between target N and actual N rates ($R^2 = 0.9999$). In summary, the VRFS applied the correct amounts of N within each zone by either manually controlling the pulsing mechanism or utilizing a prescription map to apply different rates throughout the field.

Keywords

Cotton, Nitrogen, Fertigation, Irrigation, Variable Rate, Nutrient Management, Precision Agriculture

1. Introduction

The adoption of irrigation in the Southeast US has accelerated considerably since 2002, increasing at a rate of 4047 hectares per year [1]. Therefore, many growers apply nutrients through irrigation systems, known as fertigation. During fertigation events, nutrients are injected into the irrigation water and dispersed onto the ground and the leaves. The fertilizer that contacts the leaves is considered foliar fertilization. Foliar fertilization improves the efficiency and rapidity of nutrient utilization required by the plant for maximum growth and yield. In this way, the foliar fertilization that subsequently lands on the plants leaves provides a more efficient supply of nutrients to the developing plant for optimum yields and quality [2].

The common method of fertigation is using a pumping apparatus that injects the nutrients from a tank filled with nutrients at the base of the irrigation system into the main irrigation water line. This method applies fertilizer uniformly across the entire field [3]. However, this method does not account for variation in soil texture and water holding capacity (which can vary considerably in the Southeast region), all which could subsequently have a major impact on crop fertilizer management strategies [4]. Yield response to N fertilizer also varies significantly among different sections of a production field due to the variation in soil even in small fields (less than 4 hectares in size) in the Southeast region. The spatial soil variability adds to the difficulty in N application, use, and proper timing for a cropping season [5]. For example, soil variability can result in a tremendous amount of growth variability in cotton plants [6] [7]. Soil type also affects the frequency of fertilizer application. Sandy soils require more frequent applications of smaller amounts of nitrogen than clay soils because these nutrients leach more readily in sandy soils due to its larger particle size. The nitrate form of N, which is the preferred form of N in the soil for plant uptake, is highly mobile and can move through the soil after rainfall or irrigation more rapidly in a sandy soil [8]. Therefore, a uniform application of N fertilizer over the entire field can be both costly and environmentally unsound [9].

High production costs make it increasingly important for growers to reduce crop input costs while maximizing yields to stay competitive in the global market. For example, a 20% reduction in N application could save US cotton, corn,

and wheat farmers over \$1.8 billion annually [10]. Applying the proper N fertilizer rate is a critical management decision for producers in the Southeastern US. Currently, there is no variable-rate fertigation equipment available to apply a correct amount of N where it is needed within a field. Additionally, there are no practical decision-making tools available for variable-rate application of N through overhead sprinkler irrigation systems, which is the predominant type of row crop irrigation system in the Southeastern US.

2. Objectives

The objectives of this study were to: 1) design and develop a variable-rate N application system that works independently of irrigation water flow and can be retrofitted onto an overhead irrigation system (conventional or variable-rate), 2) adapt the Clemson Variable Rate Irrigation (VRI) software, developed for variable-rate irrigation system [11] to apply variable-rate N based on crop needs, 3) test this system for accuracy under actual field conditions.

3. Methodology

3.1. Design Criteria

The variable-rate N application system was designed and constructed using the following criteria. The system should 1) Have the capability of applying different rates of N ranging from 0 to 337 kg/ha; 2) Utilize the pulsing technique to control the rate of application to allow for precise zone management; 3) Easily be retrofitted on an existing overhead irrigation system (uniform-rate or variable-rate); 4) Apply fertilizers based on crop needs and be independent of the amount of irrigation water is being applied at that location; 5) Be controlled using pre-described fertilizer rates (map-based) and could communicate with GPS and GIS software; and 6) Maintain a constant pressure throughout the fertilizer application system so that uniform application of N can be achieved.

3.2. Equipment

A 76-m long linear-move irrigation system (Reinke Manufacturing, Deshler, Nebraska, USA), was modified to apply variable-rate nitrogen (VRN) using low energy precision application (LEPA) drops. The LEPA irrigation drops consisted of Quad Spray[®] nozzles (Senninger Irrigation Inc., Clermont, FL, USA) hanging so that the irrigation emitter was 25 cm above the ground.

A special trailer was designed and constructed to carry the fertilizer tank and injection equipment alongside the irrigation system (**Figure 1**).

The fertilizer injection system consisted of a 1250-liter tank; a roller pump (Hypro Pumps, New Brighton, MN, USA) that was powered by an electric motor (Leeson Electric, Grafton, WI, USA); and electronic control system. The roller pump distributed N from the tank into a 114-liter bladder tank. This pressurized N storage tank was required to reduce pump cycling and maintain constant N

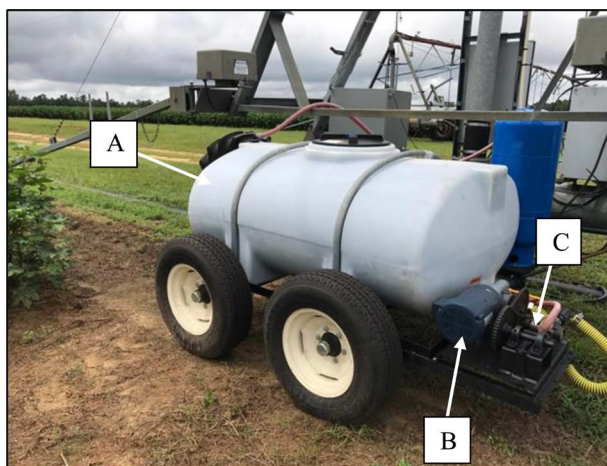


Figure 1. Custom designed trailer apparatus with 1250-liter tank (A), motor (B), and roller pump (C) attached to linear-move irrigation system.

pressure throughout the injection system by using an adjustable pressure switch (Square D Industries, Andover, MA, USA). The pressure switch energized the electric motor to pump more N into the bladder tank when the system pressure dropped below 0.276 MPa and to turn off the motor when pressure reached above 0.345 MPa. The bladder tank and pressure switch combination also kept N pressures above that of the irrigation water which facilitated injection into the LEPA drops. A flow divider (Prince Hydraulics, North Sioux City, SD, USA) was installed between the bladder tank and the main N line, which made it possible to increase or decrease maximum N rate throughout the system and send any excess flow back to the tank.

The VRFS uses the nozzle pulsing system as described by Perry [12]. The pulsing system cycles individual or a group of N injection solenoids OFF and ON to achieve desired N rates within management zones. The N injection system was divided into ten zones along the length of the irrigation system. Each zone was controlled independently to apply different N rates based on the prescription map. The VRFS consists of one main N line made from 1.9-cm Chlorinated Polyvinyl Chloride (CPVC) that spans the length of the irrigation system. The main N line feeds ten manifolds along the irrigation system. Ten normally closed, 2-way, 24 V electric solenoid valves (US Solid model: USS-LSV00005, Joyfay International LLC, Cleveland, OH, USA) were used to control N rates.

Each solenoid valve was attached to a manifold with four outlets which, injected N into four irrigation drop nozzles (Figure 2).

Therefore, each solenoid covered eight rows of cotton. The manifolds were also made from CPVC and allowed N to be injected through a 6.4-mm tubing into the irrigation drops. A flow regulator equipped with a CP4916-15 orifice disk (TeeJet Technologies, Springfield, IL, USA) was installed at the end of each injection tubing (just before the drop hoses entered the irrigation emitters), which helped to control the flow of N into the irrigation drop. These orifices were utilized to maintain even N distribution from the manifolds to each irriga-

tion drop.

3.3. Control System and Custom Software

The electrical signals, sent to the solenoids to turn the N flow off and on, were controlled by a solid-state relay board (SSR-RACK24, Measurement Computing, Middleboro, MA, USA) with AC-switch solid-state relays (SSR-OAC-05, Measurement Computing, Middleboro, MA, USA). A laptop computer, equipped with a data acquisition and control adaptor (MiniLab-1008, Measurement Computing), was used to control ten lines of digital output to the solid-state relay board. A GPS antenna was installed on top of the lateral and connected to a receiver (AgGPS 132, Trimble Navigation Limited, Sunnydale, CA, USA), the GPS system provided 30 cm accuracy. A 120 to 24-volt AC transformer (Acme Electric, Menomonee Falls, WI, USA) was used to supply power to the solenoids. These electronic components were mounted inside a weather-proof NEMA box (**Figure 3**).

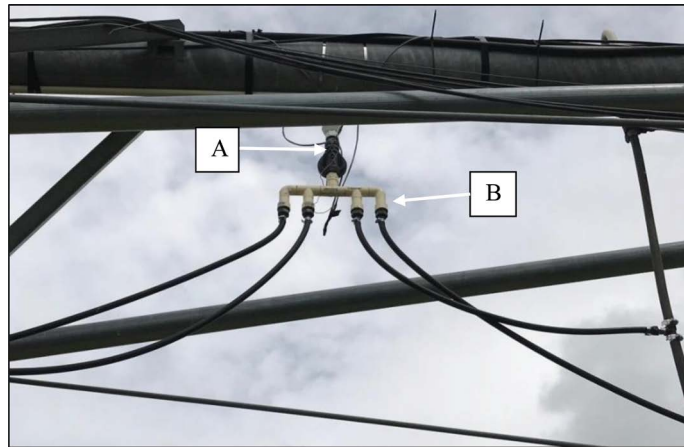


Figure 2. US Solid 24v solenoid (A) and nitrogen injection manifolds (B).

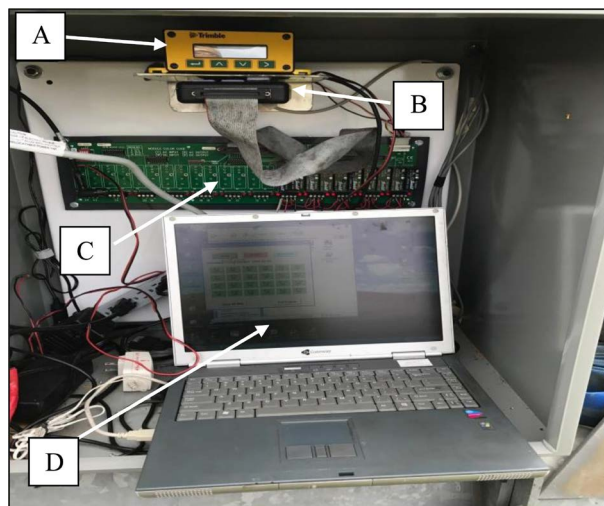


Figure 3. Control box with DGPS receiver (A), minilab (B), and solid state relay board (C) connected to a laptop computer (D).

Clemson Lateral Irrigation Control (CLIC) software [11] was modified and utilized to support Clemson variable rate N injection system. To operate this system, two software programs were utilized; one to setup the field data and one to setup the rates for each zone. The software first collects field information, including the length and width of the field, its GPS coordinates, the orientation of the lateral, and the number of N control sections and zones. The field was divided into “Sections” and “Zones” in which the N rates could be controlled (Figure 4).

The “Control Section” followed the direction of the Lateral Guide (travel path). The section length can be fixed or variable. In this study, fix length of 18-m was selected for all sections.

The number of zones was set by the hardware and matched the number of relays (solenoid valves) installed on the lateral. In this study, the zone width was eight rows because the N was injected from the manifold into four irrigation drops. The program had the capabilities to manage up to 24 digital control lines. In the present study, only ten were utilized representing the number of solenoids (zones) that were used.

The N rate information was then entered on the second part of the “Field Configuration Utility”. The N amount was set by clicking one of the rate buttons

Figure 4. Clemson Variable Rate Irrigation (VRI) field configuration utility setting screen, used for VRN.

on the left and clicking anywhere inside the field to apply the selected rate to the zone. A custom rate could be set by right-clicking on any section (or plot) and entering a N rate (Figure 5).

A N prescription map could also be imported from or exported to an Excel spreadsheet. The second software program, Clemson Lateral Nitrogen Control (CLNC), utilizes the N application map and controls the fertigation system using the position signal from the DGPS. The control system can turn a bank of N injectors (solenoids) ON/OFF in each zone, utilizing a 60-s cycle. The CLNC program determines the highest N rate among the zones along the irrigation system. It then calculates the nozzle ON/OFF time for the rest of each zone, as the fraction of the highest N rate, in a 60-s ON/OFF cycle. For example, if zone one has the highest N rate of 100 kg/ha, and the N rate for zone two is 50 kg/ha, then the solenoid in zone one will stay ON, while the solenoid in zone two will be turned ON for 30 sec. and OFF for 30 sec. To accomplish this, the program continuously reads the GPS location signal to determine which section of the field the injection system is located. When the injection system moves into a new section in a field, the software checks all the N rates in that section. The software then identifies the highest N rate that needs to be applied to that section. The system does not pulse the nozzles for the highest rate but calculates the new pulsing (ON and OFF times) pattern for the rest of the N rates, as percent of the highest rate. However, the system cannot adjust the flow control valve to deliver the highest N rate. This is because the current flow control valve installed on the injection system is a “manually controlled” valve. Currently, the highest rate (for a given section) is adjusted manually.

The forward speed of a conventional irrigation system is constant; therefore, all N rates (for developing a prescription map) can be calculated for the entire field, based on a constant speed. However, for a variable-rate irrigation system,



Figure 5. Clemson Variable Rate Irrigation (VRI) field configuration utility map screen, used for VRN.

the forward speed (in addition to pulsing patterns) changes based on the irrigation water rates. The change in system speed will affect the applied N rates. For example, if a section in the field requires only one rate of N (100 kg N/ha) and two rates of irrigation water (1 and 2-cm deep), then the forward speed of the irrigation system will be reduced to increase irrigation water depth from one 1 cm to 2 cm. This change in forward speed could almost double the N rate for a portion of that section, as a result, fertilizer would be wasted. Therefore, the out flow of the fertilizer injection system (without pulsing) needs to be calibrated for different speeds, after installing the equipment on an overhead irrigation system.

3.4. N Injection System Performance Tests

Four tests were conducted to determine the uniformity of the variable-rate N fertigation application system. The variable rate N fertigation system was calibrated for accuracy using 3-L bottles (**Figure 6**). Thirty-eight of these bottles were used to match the number of the irrigation drop nozzles that were on the system. Because the system pulses solenoids ON and OFF to produce the desired amount of N, the uniformity of fertilizer application along the system was a concern. Application uniformity can be defined as a measure of the evenness of distribution over the entire area [13]. The Quad Spray[®] drops at the end of all drop nozzle were removed, and the bottles were installed using custom designed bottle caps. Since every drop nozzle had a bottle, calibrations were accurately measured with no loss of liquid (**Figure 6**).

The first step was to visually observe that the injection system was adequately dispersing N into the drop nozzles once the irrigation water was on. For this purpose, the fertilizer tank was filled with water, and four liters of a blue spray indicator (Turf Mark, BASF, Research Triangle Park, NC, USA) was added to the tank and was thoroughly mixed with the water inside the tank. The irrigation



Figure 6. A 3-L calibration bottle connected to the end of the LEPA irrigation drop hose.

water was then turned on along with the N injection system. It was apparent that the blue dye was being injected through all the manifolds, mixing with irrigation water and being dispersed properly (**Figure 7**).

3.4.1. Test # 1

For calibration purposes, the system was tested using dyed water to not inadvertently waste N. To accurately test the system, a “water:nitrogen” test was conducted to ensure that the amount of water produced corresponded to how much N was being applied. This was obtained by pumping N with the VRFS and doing the same with water to see if there were any differences between the two liquids. Collection bottles were placed on each drop nozzle and the VRFS was set at 100% so the system would not pulse; then timed for a total of two minutes. After the two minutes the system was shut off. This was replicated five times for both water and N. The amount (in units of volume) collected from both the N and the water was measured and recorded from each drop.

3.4.2. Test # 2

For this test, the N rates were controlled by changing the travel speed of the lateral irrigation system without pulsing nozzles. Four travel speeds of 31, 41, 62, and 123 m/h were used for this purpose. The speed was set at the control panel and bottles were placed on each nozzle of the lateral (**Figure 8**). The samples were collected for a 30-m distance for each travel speed, and the tests were replicated 5 times. The amounts (in units of volume) were collected, measured, and recorded from each drop nozzle.

3.4.3. Test # 3

The fertilizer injection system was tested for uniformity across the length of the



Figure 7. Injection of blue spray indicator being emitted through the LEPA drops nozzles.



Figure 8. Uniformity test sample collection using 3-L bottles attached to the LEPA drop nozzles.

irrigation system. This test was conducted to determine if the N amounts from the nozzles closest to the N tank were different than the N amounts from the nozzles farthest from the N tank. Four different N application rates (31, 59, 88, and 113 kg/ha) were tested by manually setting the flow control valve. These N rates were assigned to all ten zones and replicated five times. Each rate was collected with the irrigation system stationary for a total of one minute. The amounts (in units of volume) were collected, measured, and recorded from each drop nozzle. The actual data were compared with the target N rates between each drop nozzle and zone. Deviations from target values for each drop nozzle were calculated as percent error.

Individual nozzles were also tested in all ten zones to ensure that each nozzle was giving the desired amount of N rate when nozzles were pulsing. Bottles were installed at the end of each nozzle of the lateral, and the N injection system was turned on and N samples were collected in the bottles for one minute. The bottles were measured after each pulsing test. All the nozzles were tested at the 100%, 75%, 50%, and 25% pulsing (ON and OFF) simultaneously for each pulsing percentage. Errors for each nozzle output were calculated by subtracting the measured value by the target value and dividing by the target value. Control limits were also tested to determine the acceptability of the systems uniformity and performance.

3.4.4. Test # 4

This test was conducted to test map-based capabilities of the variable-rate N injection system. A prescription map with four N rates of 28, 56, 84, and 112 kg/ha, was developed and loaded into the N injection system's controller. Since the flow control valve flow rates were tested in test two the maximum was set at 112

kg/ha which corresponds to the solenoids constantly on (100% pulsing). For the other three rates (28, 56, 84 kg/ha), the controller pulsed the nozzles at 25%, 50%, and 75%, respectively. For example, for 25%, the nozzles were ON for 15 s (25% of one minute) and OFF for 45 s. Again, bottles were mounted in place of each nozzle of the lateral, and samples were collected for 6 m along the lateral irrigation travel. Tests were repeated five times. The collected samples (actual) were compared to target values in the N prescription map, to determine system accuracy.

4. Results and Discussion

4.1. Test # 1

A pump output test was conducted with N and again with water. To determine agreement between N and water volume a scatter plot was created to visualize the relationship (**Figure 9**). To confirm a 1:1 relationship a regression analysis was conducted which included the replication effect. A t-test of the slope coefficient confirmed that the actual slope was close to 1, which determined that the output volume of the pump with water and N was the same. The only difference is the density of material was 1 kg/L and 1.28 kg/L for water and N, respectively.

4.2. Test # 2

Nozzle flow and uniformity tests were conducted using four different travel speeds (125, 62, 41 and 31 m/hr). N application rates for these speeds were 31, 59, 88, and 113 kg/ha, respectively. This determined that there is an exponential relationship with N rates versus speed of travel. **Figure 10** shows correlation between the irrigation system's forward speed and the N rates.

4.3. Test # 3

Figure 11 shows application uniformity across the width of the irrigation system.

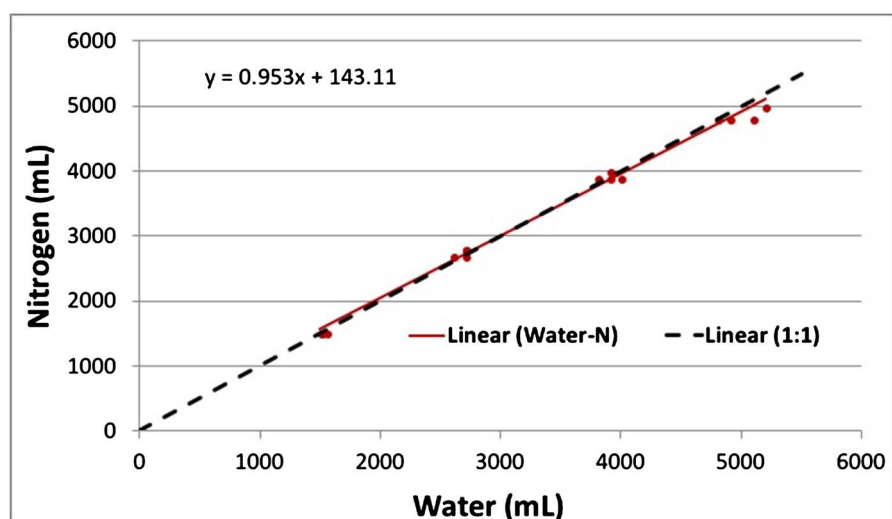


Figure 9. Pump output test to determine if volume of water versus N was different.

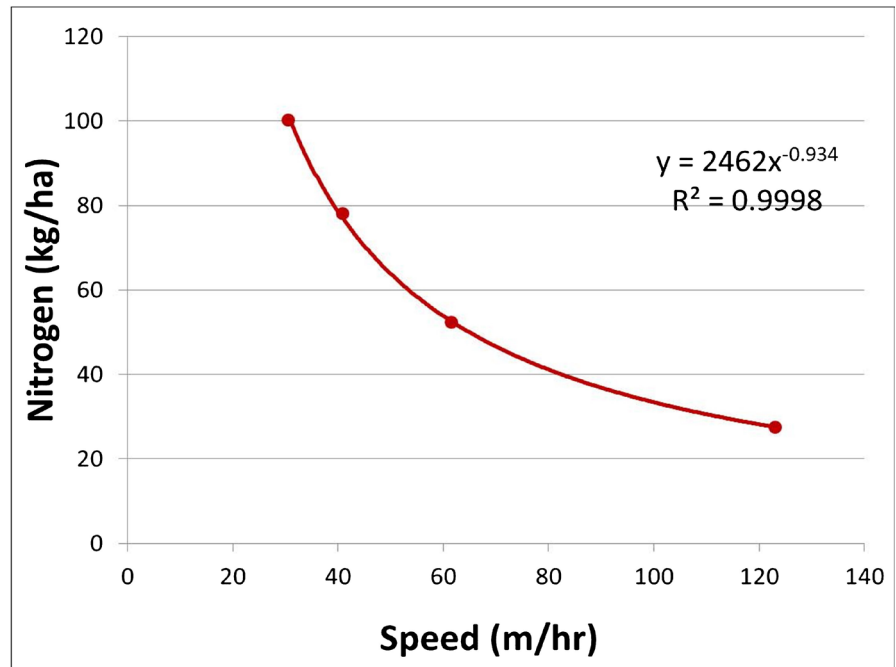


Figure 10. The correlation of N rates with the forward speed of the linear-move irrigation system.

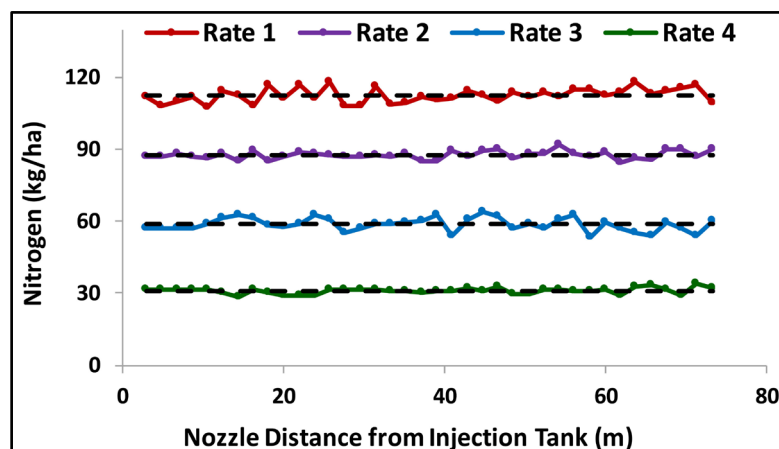


Figure 11. The nozzle output across the width of the linear-move irrigation system at four different rates of N. The (----) lines indicate the target rates of 31, 59, 88, and 113 kg N/ha for actual N rate 4, 3, 2, and 1, respectively.

The X-axis provides distance of each irrigation drop tube (nozzle) from the base of the irrigation system, where the fertigation system was installed. The nozzles produced an average flow of 31.1, 58.7, 87.6, and 112.7 kg N/ha, for the target rates of 31, 59, 88, and 113 kg N/ha, respectively (Figure 11). Average errors for these rates were 0.3%, 0.5%, 0.5%, and 0.3%, respectively. The quantity of N collected from each nozzle was also compared to the target values and the deviations from the target values for each drop nozzle were calculated as percent error. For the 31 and 59 kg N/ha rates, the maximum errors were 8.7%. The maximum error for the 88 and 113 kg N/ha rates was 5%. Overall, the average error

for all rates was 0.1%.

Individual nozzle output was also tested at different pulsing rates for all ten zones. The tests were conducted for the duration of one minute at 25%, 50%, 75%, and 100% of nozzle pulsing (ON time). In each zone (plot), there were four drop nozzles, marked as nozzles 1, 2, 3, and 4. Output flow from these nozzles was collected and converted to kg N/ha. Tests were replicated ten times for each percentage ON time. To determine if the system was uniform along the length of the irrigation system a control limits statistical analysis was performed. All pulsing rates were uniform and were within control limits (Figure 12).

The average target and actual N rates for each nozzle were tested for accuracy of delivery. These nozzles produced average N rates of 26.0, 55.6, 82.9, and 111.3 kg/ha, for 25%, 50%, 75%, and 100% of nozzle ON time, respectively. The overall average error for this test was 1.8% with a maximum error of 5.2%.

4.4. Test # 4

This test was conducted to determine the accuracy of the map-based controller

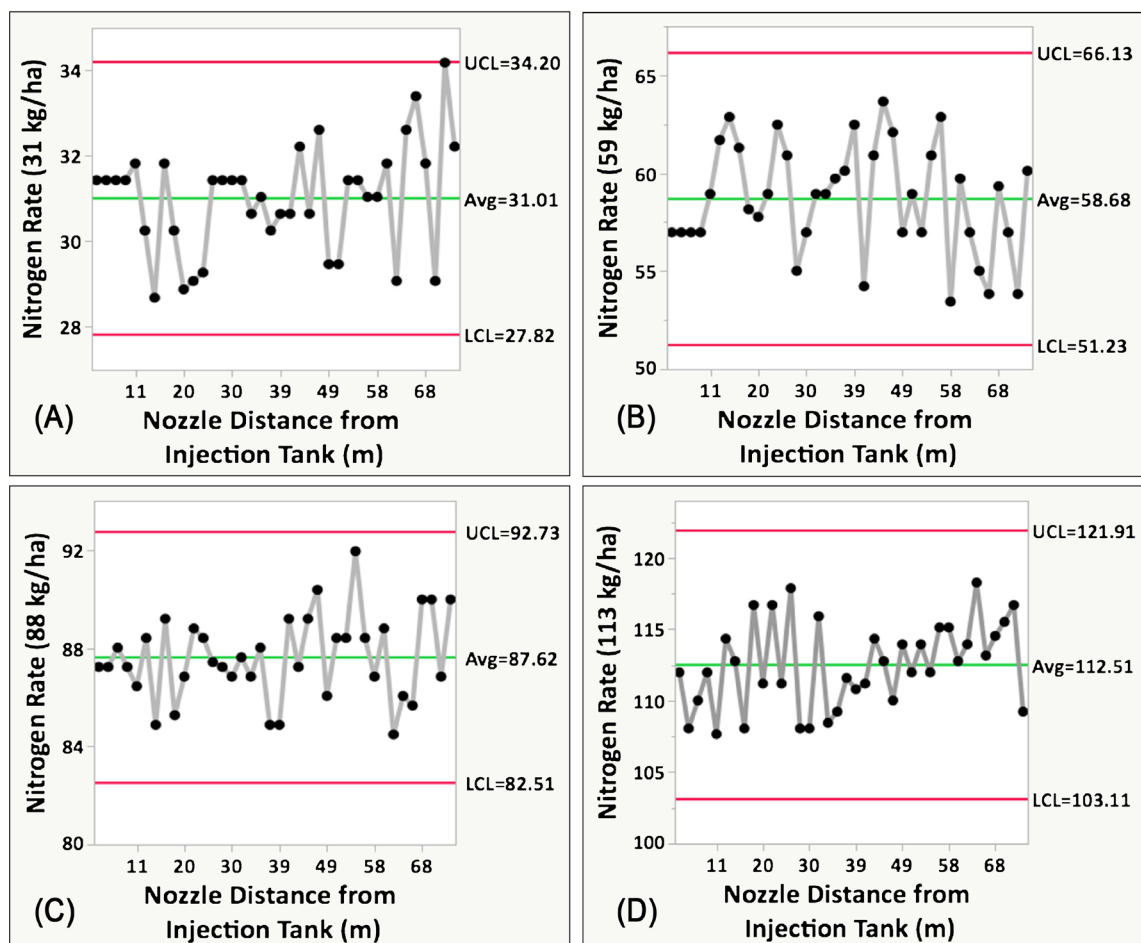


Figure 12. Control limits for application uniformity across the width of the linear-move irrigation system testing all nozzles of the irrigation system to determine if there is any loss of N flow. (A) 31 kg/ha N rate, (B) 59 kg/ha N rate, (C) 88 kg/ha N rate, (D) 113 kg/ha N rate.

system for applying variable-rate N. (Figure 13) shows the results of the accuracy test for the map-based controller system. The system produced an average flow of 26.8, 55.6, 83.1, and 113.3 kg N/ha, for prescription map rates of 28, 56, 84, and 112 kg N/h, respectively. The average application error for all rates was 1.8%. The application errors ranged from 0.8 % to 4.4%. The 28 kg N/ha rate had the highest error, whereas, the 112 kg N/ha rate had the lowest application error. To determine agreement between N application uniformity and distance traveled a scatter plot was created to visualize the relationship for each N rate over the distance traveled by the linear-move irrigation system (Figure 13).

To determine agreement between N application uniformity and distance traveled a 1:1 relationship a regression analysis was conducted which included the replication effect. A t-test of the slope coefficient was conducted to confirm that the actual slope was equal to 1 (Table 1). A control limit test was also conducted to determine if the application rates were acceptable (Figure 14).

There was a strong correlation ($R^2 = 0.9999$) between the target and actual N application rates. To determine agreement between target N rates and actual N rates a scatter plot was created to visualize the relationship (Figure 15). To confirm a 1:1 relationship a regression analysis was conducted which included the replication effect. A t-test of the slope coefficient was conducted to confirm that

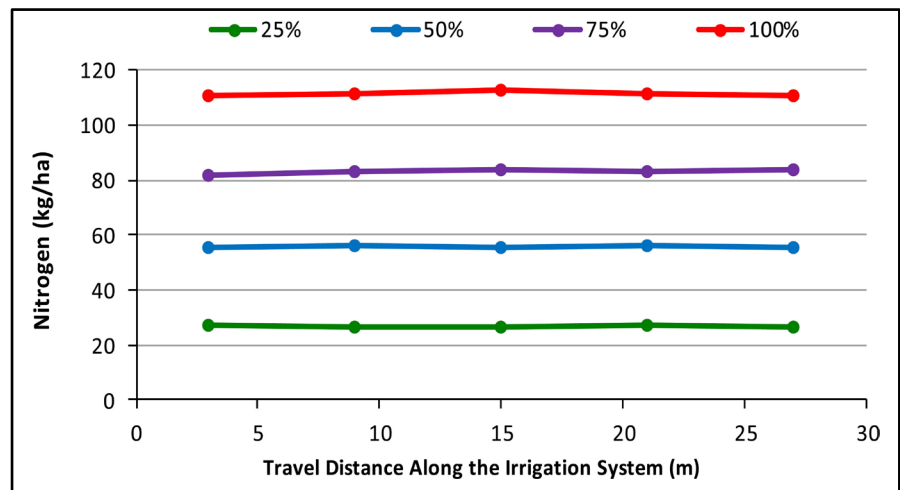


Figure 13. Application uniformity at 25%, 50%, 75%, and 100% pulsing along the direction of the linear-move irrigation system travel using the map-based controller over a 6 m distance.

Table 1. ANOVA table for application uniformity along the direction of the lateral irrigation travel using the map-based controller.

Source	DF	Sum of Squares	Mean Square	F Value	Pr > F	
Model	1	140099.14	140,099	47,423	<0.0001	
Error	178	525.86	2.954259			
Corrected Total	179	140625				
Term	Estimate	Std Error	t Ratio	Prob > t	Lower 95%	Upper 95%
N (kg/ha)	0.9960272	0.004574	217.77	<0.0001	0.9870	1.0050

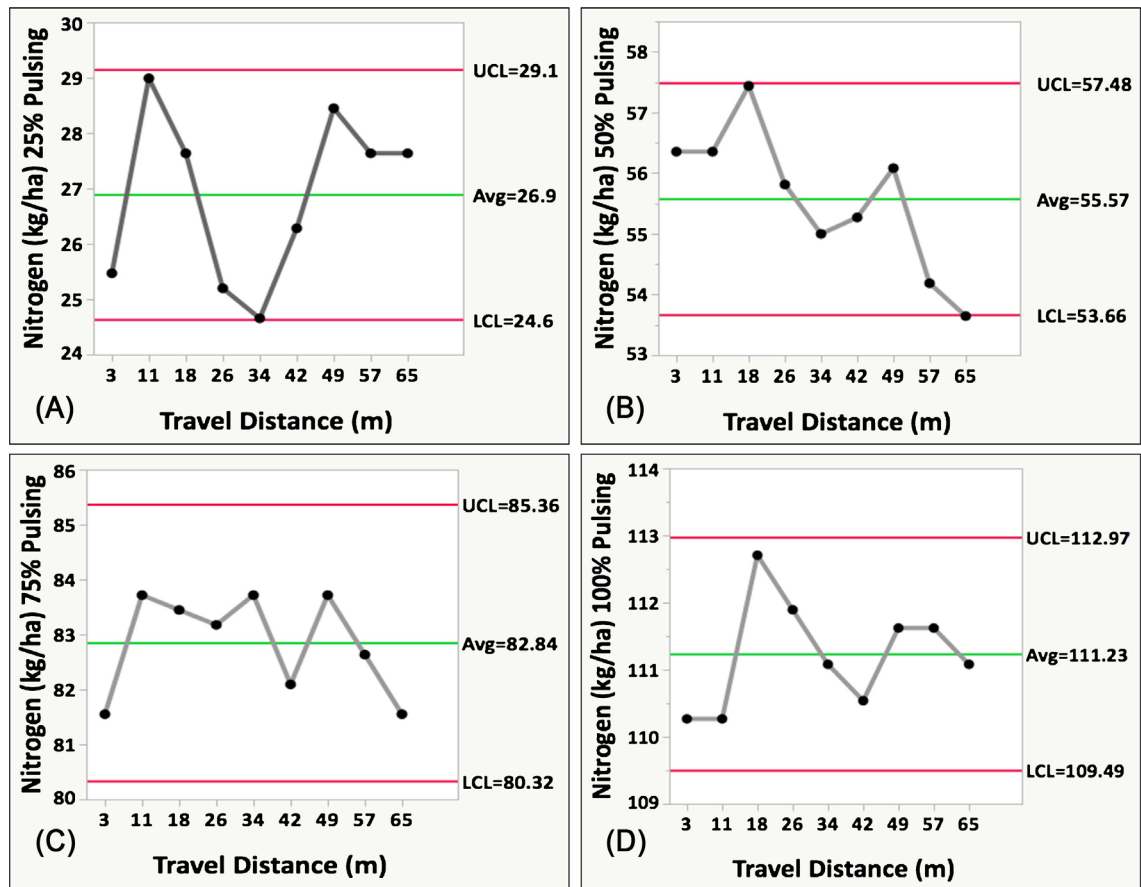


Figure 14. Application uniformity along the direction of the linear-move irrigation system travel using the map-based controller. (A) 25% pulsing N rate, (B) 50% pulsing N rate, (C) 75% pulsing N rate, (D) 100% pulsing N rate.

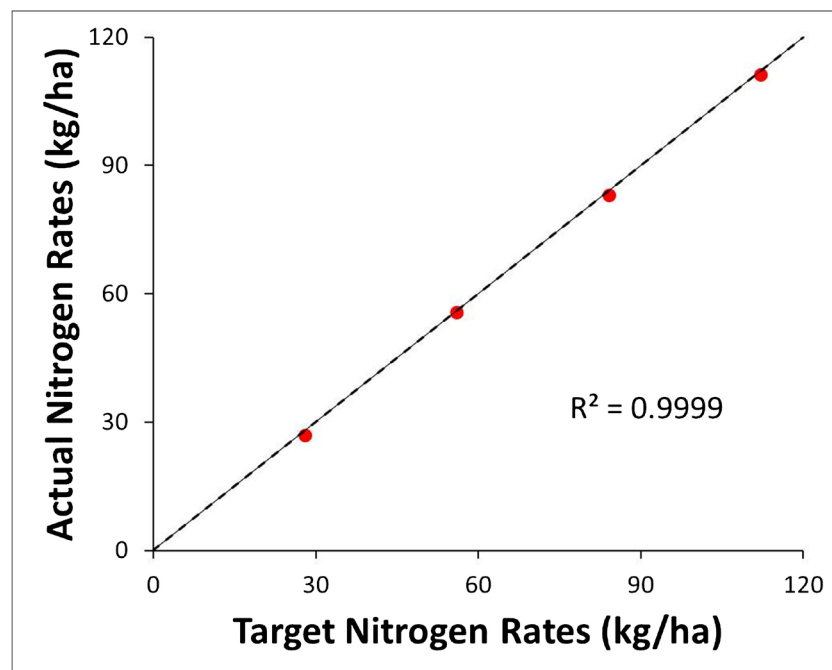


Figure 15. Target N versus actual N rates of the map-based controller.

Table 2. ANOVA table for Target N versus actual N rates of the map-based controller.

Source	DF	Sum of Squares	Mean Square	F Value	Pr > F	
Model	1	15666.678	15666.7	55411.62	<0.0001	
Error	18	5.089	0.282733			
Corrected Total	19	15671.767				
Term	Estimate	Std Error	t Ratio	Prob > t	Lower 95%	Upper 95%
Actual/Target (kg/ha)	1.0013328	0.004254	235.40	<0.0001	0.9923	1.0102

the actual slope was equal to 1 (**Table 2**).

5. Conclusions

A VRFS was developed, installed, and tested on a lateral-move irrigation system to deliver site-specific N rates. The application system closely followed design specifications and can apply different rates of N ranging from 0 to 135 kg/ha and could easily be retrofitted on an existing overhead irrigation system (uniform-rate or variable-rate). The VRFS was completely independent of the amount of irrigation water being applied to a location in a field and could apply fertilizers based on crop needs.

The average application errors for the nozzle flow uniformity tests were 0.3%, 0.5%, 0.5%, and 0.3%, for the target application rates of 31, 59, 88, and 113 kg N/ha, respectively. Surprisingly, the average error for all rates was 0.1%. These results determined that the output of the VRFS was uniform across the whole length of the irrigation system.

Nozzle pulsing test produced average N rates of 26.0, 55.6, 82.9, and 111.3 kg N/ha, for 25%, 50%, 75%, and 100% of nozzle ON time, respectively. The overall average error for this test was 1.8% with a maximum error of 5.2%.

The controller system successfully communicated with GPS and GIS software, which closely followed the prescription map, and switched from one rate of N to another at the exact location, specified in the prescription map. The controller software was written so that no two banks of nozzles would turn ON or OFF at the same time to reduce fluctuations in the line pressure of the injection system. The system produced an average flow of 26.8, 55.6, 83.1, and 113.3 kg N/ha, for prescription map rates of 28, 56, 84, and 112 kg N/h, respectively. The average application error for all application rates was 1.8%. The application errors ranged from 0.8 % to 4.4%. The 28 kg N/ha rate had the highest error, whereas, the 112 kg N/ha rate had the lowest application error. There was also a strong correlation ($R^2 = 0.9999$) between the target and actual N application rates.

The overall performance of the system was promising. The VRFS applied the correct amounts of N within each zone by either manually controlling the pulsing mechanism or utilizing a prescription map that could apply different rates throughout the field within each individual zone.

Acknowledgements

Technical Contribution No. **6587** of the Clemson University Experiment Station. This material is based upon work supported by NIFA/USDA, under project numbers 2016-04590 and SC-1700540. Additional funding provided by National Cotton Council and the SC Cotton Board. The authors also acknowledge the funding support of the Clemson Public Service Activities.

Disclaimer

The mention of a trade name does not imply endorsement of the product by Clemson University to the exclusion of others that might be suitable.

Conflicts of Interest

The authors declare no conflicts of interest regarding the publication of this paper.

References

- [1] United States Department of Agriculture (2017) National Agricultural Statistics Service, Crop Production Summary.
<http://usda.mannlib.cornell.edu/usda/current/CropProdSu/CropProdSu-01-12-2018.pdf>
- [2] Oosterhuis, D. (2009) Foliar Fertilization: Mechanisms and Magnitude of Nutrient uptake. *Proceedings of the Fluid Forum*, 15-17 February 2009, Phoenix, AZ.
<http://www.fluidfertilizer.com/Forum%20Presentations/2009/2009%20Forum%20Proceedings/Derrick%20Oosterhuis.pdf>
- [3] Verbree, D., McClure, A. and Leib, B. (2013) Fertigation of Row-Crops Using Overhead Irrigation. University of Tennessee Extension Publication, W303.
<https://extension.tennessee.edu/publications/Documents/W303.pdf>
- [4] Duffera, M., White J. and Weisz, R. (2007) Spatial variability of Southeastern U.S. Coastal Plain Soil Physical Properties: Implications for Site-Specific Management. *Geoderma*, **137**, 327-339. <https://doi.org/10.1016/j.geoderma.2006.08.018>
- [5] Scharf, P., Lorry, J., Kitchen, N., Sudduth, K. and Davis, J. (2002) Spatial Variability of Optimum N Rate for Corn. American Society of Agronomy, Madison, WI.
- [6] Kablan, L.A., Chabot, V., Mailloux, A., Bouchard, M.È. and Bruulsema, T. (2017) Variability in Corn Yield Response to Nitrogen Fertilizer in Eastern Canada. *Agronomy Journal*, **109**, 2231-2242.
- [7] Jones, M.A. (2008) Utilizing Crop Vegetation Indices (NDVI) Measurements to Potentially Reduce Input Costs Associated with Plant Growth Regulator and Harvest Aid Applications. *Proceedings of the Beltwide Cotton Conferences, National Cotton Council of America*, 8-11 January 2008, Memphis, TN, 158-161.
- [8] Dexter, A.R. (2004) Soil Physical Quality; Part I. Theory, Effects of Soil Texture, Density, and Organic Matter, and Effects on Root Growth. *Geoderma*, **120**, 201-214. <https://doi.org/10.1016/j.geoderma.2003.09.004>
- [9] Crouse, D.A. (2017) Soils and Plant Nutrients, North Carolina Extension Gardener Handbook. NC State Extension, Raleigh, NC.
<https://content.ces.ncsu.edu/extension-gardener-handbook/1-soils-and-plant-nutrients>

- [10] Nafchi, A.M., Maja, J.M., Khalilian, A., Han, Y., Rogers, N., Payero, J.O., Marshall, M.W., Williams, P.B. and Fox, J. (2017) An Electro-Mechanical Controller for Adjusting Piston Pump Stroke On-the-Go for Site-Specific Application of Crop Nutrients. *Agricultural Sciences*, **8**, 949-959. <https://doi.org/10.4236/as.2017.89069>
- [11] Han, Y.J., Khalilian, A., Owino, T.O., Farahani, H.J. and Moore, S. (2009) Development of Clemson Lateral Variable-Rate Irrigation System. *Computers and Electronics in Agriculture*, **68**, 108-113. <https://doi.org/10.1016/j.compag.2009.05.002>
- [12] Perry, C., Pocknee, S. and Hansen, O. (2003) A Variable Rate Pivot Irrigation Control System. In: Stafford, J. and Werner, A., Eds., *ECPA 2003, Proceedings of the Fourth European Conference on Precision Agriculture*, Wageningen Academic Publishers, Wageningen, 539-544.
- [13] Scherer, F., Thomas F., Kranz, W., Pfost, D., Werner, H., Wright, J.A. and Yonts, C.D. (1999) *Sprinkler Irrigation Systems*. MidWest Plan Service, MWPS-30. 1st Edition, Iowa State University, Ames, IA.