

# Generalization of the de Sitter Cosmos

Rainer Burghardt

Independent Researcher, Obritz, Austria

Email: [arg@aon.at](mailto:arg@aon.at)

**How to cite this paper:** Burghardt, R. (2018) Generalization of the de Sitter Cosmos. *Journal of Modern Physics*, 9, 685-700.

<https://doi.org/10.4236/jmp.2018.94047>

**Received:** February 18, 2018

**Accepted:** March 27, 2018

**Published:** March 30, 2018

Copyright © 2018 by author and  
Scientific Research Publishing Inc.

This work is licensed under the Creative  
Commons Attribution International  
License (CC BY 4.0).

<http://creativecommons.org/licenses/by/4.0/>



Open Access

## Abstract

First of all, we investigate whether the transformation of Lemaître inevitably leads from the static de Sitter cosmos to an expanding cosmos. A Lorentz transformation which can be assigned to the Lemaître transformation results in a frame of reference that moves relatively to the static dS system. Because of the homogeneity of space, this applies to every point in the space which does not itself undergo any change. We interpret the “expansion” of the cosmos Milne-like. It is not the space that expands, but the mesh of the Lemaître coordinate system. The velocity parameter of the associated Lorentz transformation is geometrically based and shows that the joined observer systems are moving in free fall. We also discuss the question of whether the speed of light for free-falling observers in the universe can be reached or can be exceeded, respectively. We raise the question of whether the model can be extended in such a way that the motions take place with a velocity that is lower than the one of the free fall. We believe that the method we have derived can be generalized to models with genuine expansion.

## Keywords

De Sitter Cosmos, Accelerated Expansion, Coordinate Transformations, Reference-System Transformations

## 1. Introduction

We want to discuss the question of whether a cosmological model is possible which expands at a rate lower than the one of free fall. Before we elaborate a procedure that may be universally valid, we examine the problem for the Sitter cosmos.

In Section 2, we give a short overview of the Sitter cosmos. We critically review the usual interpretation of the static and expanding versions of the dS cosmos. We assume that space does not expand, but that a family of observers moves in such a way that their members diverge. It is also pointed out that the recession velocity on the cosmic horizon can only reach the speed of light

asymptotically. Since superluminal velocities are excluded, the dS model fulfills the basic laws of special and general relativity. Galactic island formation cannot occur.

In Section 3, we generalize the model. We implement a family of observers that moves at a speed less than the one of free fall. We accomplish this with the double-velocity approach, subtracting relativistically two velocities from one another. As a result of this generalization, acceleration of the recession velocity is possible. With a new parameter, one can manipulate the calculated redshift.

In Section 4, we examine the field equations of the generalized model with the result that the extension of the dS model is an exact solution of the field equations.

In Section 5, we specify the additional part of the recession velocity and thus we gain more insight into the geometric structure of the model.

In Section 6, we also discuss the possibility of a coordinate transformation accompanying the accelerated observers.

## 2. Basics of the de Sitter Cosmos

The metric of the dS cosmos in the static version is mostly written down in the *canonical* form

$$ds^2 = \frac{1}{1 - r^2/\mathcal{R}^2} dr^2 + r^2 d\mathcal{G}^2 + r^2 \sin^2 \mathcal{G} d\varphi^2 - (1 - r^2/\mathcal{R}^2) dt^2, \quad (1.1)$$

$\mathcal{R}$  being the radius of the pseudo-hypersphere representing the dS cosmos. With the relations

$$\begin{aligned} v_R &= \frac{r}{\mathcal{R}}, \quad a_R^2 = 1 - v_R^2 = 1 - r^2/\mathcal{R}^2, \quad \alpha_R = 1/a_R \\ v_R &= \sin \eta, \quad a_R = \cos \eta, \quad r = \mathcal{R} \sin \eta \end{aligned} \quad (1.2)$$

one gets

$$ds^2 = \frac{1}{\cos^2 \eta} dr^2 + r^2 d\mathcal{G}^2 + r^2 \sin^2 \mathcal{G} d\varphi^2 - \cos^2 \eta dt^2, \quad (1.3)$$

wherein  $\eta$  is the polar angle of the pseudo-hypersphere and  $r$  the radial coordinate. With

$$r = \mathcal{R} \sin \eta, \quad \mathcal{R} = \text{const.} \quad (1.4)$$

one finally has

$$ds^2 = \mathcal{R}^2 d\eta^2 + \mathcal{R}^2 \sin^2 \eta d\mathcal{G}^2 + \mathcal{R}^2 \sin^2 \eta \sin^2 \mathcal{G} d\varphi^2 + \mathcal{R}^2 \cos^2 \eta d\psi^2. \quad (1.5)$$

The latter notation indicates that the dS metric is the metric on a pseudo-hyper sphere of constant radius  $\mathcal{R}$ . In particular, the coordinate time interval  $idt = \mathcal{R} d\psi$  is the arc element of an open pseudo-circle (hyperbola of constant curvature) on the pseudo-hyper sphere extending to infinity.  $dT = a_R dt$  is the proper time of an observer being at rest in the cosmos.

Lemaître [1] has specified the coordinate transformation

$$r' = r e^{-\psi'}, \quad \psi' = \psi + \ln \cos \eta, \quad t' = \mathcal{R} \psi' \quad (1.6)$$

which brings the metric into the form

$$ds^2 = e^{2\psi'} \left[ dr'^2 + r'^2 d\mathcal{G}^2 + r'^2 \sin^2 \mathcal{G} d\phi^2 \right] - dt'^2. \quad (1.7)$$

The time-dependent factor  $e^{2\psi'}$  in the line element indicates that the spatial arc elements expand equally into all three directions. This leads to the assumption that the space itself is expanding.  $t'$  is the coordinate time and at the same time the proper time of an observer who rests in the primed coordinate system. It applies to all observers of the system and is also called cosmic time.

We note here that a coordinate transformation can neither change the physical content of a theory nor the geometric structure of space. For example, if one introduces a rotating coordinate system, the space will certainly not rotate, but the description of a fact is more complicated. Even a helical coordinate system does not lead to any querying of the space. Thus, (1.7) describes by no means an expanding space but a coordinate system whose meshes enlarge.

At this point, a note about the curvature parameter  $k$  is appropriate. From the canonical form of (1.1) we read off  $k=1$  which stands for a positively curved, closed space—an unquestionable conclusion. The dS cosmos is based on a pseudo-hyper sphere. From the metric (1.7) can be read  $k=0$ . In [2] we have discussed in detail that a line element with  $k=0$  need not to indicate a flat infinite space. In addition, it is not clear how a closed, finite space can be transformed into a flat infinite space by a coordinate transformation. A metric with  $k=0$  is usually described with the help of a coordinate system that is related to free fall. To deepen that, we assign a Lorentz transformation to the coordinate transformation.

With (1.7) and with  $\Lambda_{i'}^i = x^i_{|i'}$  ( $i$  and  $i'$  are coordinate indices), and the scale factor  $\mathcal{K} = e^{\psi'} = r/r'$ , and using the 4-beine

$$e_1^1 = \alpha_R, \quad e_4^4 = a_R, \quad e_1^1 = a_R, \quad e_4^4 = \alpha_R, \quad e_{1'}^{1'} = \mathcal{K}, \quad e_{4'}^{4'} = 1, \quad e_{1'}^{1'} = \frac{1}{\mathcal{K}}, \quad e_{4'}^{4'} = 1 \quad (1.8)$$

we establish the matrices of the coordinate transformation

$$\Lambda_{i'}^i = \begin{pmatrix} \mathcal{K} & & & -iv_R \\ & 1 & & \\ & & 1 & \\ i\mathcal{K}\alpha_R^2 v_R & & & \alpha_R^2 \end{pmatrix}, \quad \Lambda_i^{i'} = \begin{pmatrix} \frac{\alpha_R^2}{\mathcal{K}} & & & \frac{iv_R}{\mathcal{K}} \\ & 1 & & \\ & & 1 & \\ -i\alpha_R^2 v_R & & & 1 \end{pmatrix}. \quad (1.9)$$

We determine the Lorentz transformation with

$$L_{m'}^m = e_i^m \Lambda_{i'}^i e_{m'}^{i'} \quad (1.10)$$

and we obtain

$$L_{m'}^m = \begin{pmatrix} \alpha_R & & & -i\alpha_R v_R \\ & 1 & & \\ & & 1 & \\ i\alpha_R v_R & & & \alpha_R \end{pmatrix}, \quad (1.11)$$

with  $\alpha_R$  as Lorentz factor associated to the recession velocity  $v_R$  of the galaxies. The parameters occurring in it have already been mentioned in (1.2). After having succeeded in assigning a Lorentz transformation to the coordinate transformation, one can unambiguously assign a speed  $v_R$  (the recession velocity of the galaxies) to every point in the universe—relatively to an observer who defines his position as a pole on the hyper sphere. Since all points on the sphere are equivalent, this applies to any observer.  $v_R$  is the velocity with which observers are driven away by the force  $E_1 = -U_1$ ,

$$U_1 = A_{41}^{-1} = -e_{41}^4 = \frac{1}{\cos \eta} (\cos \eta)_1 = -\alpha_R v_R \frac{1}{R}$$

from any point into all directions. We recognize that the equatorial sphere is described in the dS space with  $r = R$ . In this location is  $v_R = 1$ , i.e., in the natural measurement system the speed of light. That surface is called the cosmic horizon.

The Lorentz transformation together with the tetrad representation enables us to clearly describe the cosmos in the “freely falling” frame of reference. Due to *Einstein’s elevator principle* [2], it can be expected that the force  $U_1$  will no longer occur in the freely falling system. Instead tidal forces are to be expected. In fact, the relation

$$U_m = \left\{ -\alpha_R v_R \frac{1}{R}, 0, 0, 0 \right\} \rightarrow {}'U_m = \left\{ 0, 0, 0, -\frac{i}{R} \right\} \quad (1.12)$$

is obtained from the inhomogeneous transformation law of the Ricci-rotation coefficients. Furthermore, the spatial part of the lateral field quantities [2] obtains a flat form

$$B_{m'} = \left\{ \frac{1}{r}, 0, 0, -\frac{i}{R} \right\}, \quad C_{m'} = \left\{ \frac{1}{r}, \frac{1}{r} \cot \vartheta, 0, -\frac{i}{R} \right\}, \quad (1.13)$$

and as the 4th components one gets the tidal forces. Freely falling observers do not feel the acceleration of their system, they experience the space to be flat [2].

With the question of how observers behave at the horizon, we want to occupy ourselves in detail. First of all, we follow the path customary in cosmology. For the change of the radial coordinate we obtain with  $\partial_1 = a_R \partial_r$  and with (1.11)

$$r_{m'} = \{1, 0, 0, 0\} a_R, \quad r_{m'} = \{\alpha_R, 0, 0, -i\alpha_R v_R\} a_R. \quad (1.14)$$

Thus, one has  $r_{4'} = -iv_R$ , and with  $\partial_{4'} = \partial/i\partial t'$

$$r^* = v_R = \frac{r}{R}. \quad (1.15)$$

With (1.6) we find the relation between the comoving and non-comoving radial coordinates

$$r = R r', \quad R = e^{\psi'}. \quad (1.16)$$

With this one can write

$$r^* = H r, \quad H = \frac{1}{R} \dot{R}. \quad (1.17)$$

instead of (1.15).  $H$  is called the Hubble parameter and (1.17) the linear expansion law. According to our interpretation of the dS cosmos it is the expansion law of the coordinate mesh.

Equation (1.17) suggests that  $r$  can accept arbitrarily high values. That may be correct for a flat or a negatively curved, thus open cosmos. Both models are infinite and contain an infinite amount of matter. Apart from the fact that it is hard to imagine the infinite, the question of how an infinite amount of matter may have been created by the Big Bang remains unanswered. Therefore we believe that only positively curved, spatially closed universes are physically meaningful. Thus, the range of  $r$  is limited, namely to the range  $[0, \mathbb{R}]$  and thus the recession velocity is also limited. Its highest value is the speed of light as we have stated above.

However, we doubt that a drifting galaxy in the cosmos can really reach the speed of light. This would violate the laws of special relativity. Therefore, we examine the behavior of an observer when approaching the cosmic horizon more closely.

Now we write (1.15) as

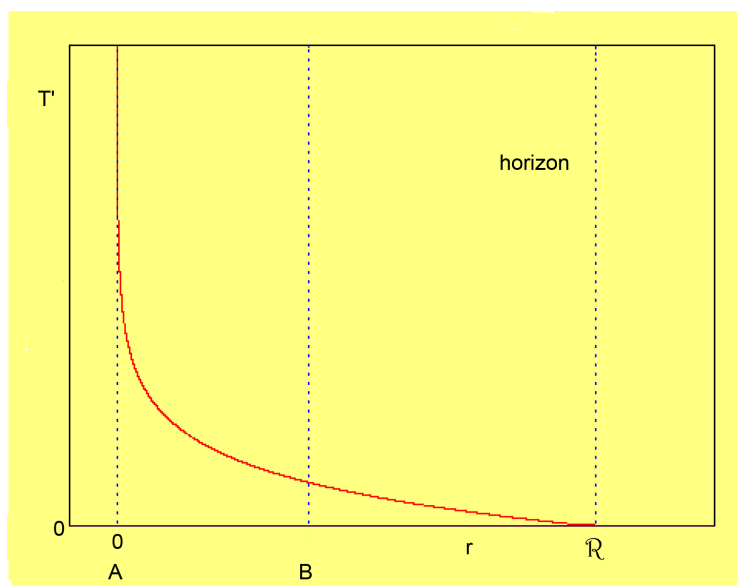
$$\frac{dr}{dT'} = \frac{r}{\mathbb{R}}. \quad (1.18)$$

Therein  $T'$  is the proper time of the comoving observer. We face the region in front of the cosmic horizon. We calculate the time that passes if an observer approaches the horizon or if he possibly reaches the horizon.

Thus, we integrate (1.18) in the interval mentioned

$$T'(r) = \int_{\mathbb{R}-r}^{\mathbb{R}} \frac{1}{r} dr = \mathbb{R} [\ln \mathbb{R} - \ln(\mathbb{R} - r)].$$

The time function obtained we have plotted in **Figure 1**.



**Figure 1.** Time function for the dS cosmos.

It can be seen that an observer A, who starts at  $r = 0$  and travels the whole distance from  $r = 0$  to  $r = \mathcal{R}$  needs an infinite amount of time to get infinitely close to the cosmic horizon. Drifting observers in the cosmos neither exceed the velocity of light nor do they even reach it.

A second observer B, released anywhere in the considered interval, reaches the horizon of A in finite time, but at a speed that is respectively lower than that of A. Since all points on a sphere are equal, any observer will call his starting point a pole. When the observer B leaves his pole, he travels through the horizon of A with subluminal speed and he reaches his individual equator, *i.e.*, he reaches his horizon only asymptotically. The equator of B lies beyond the equator of A.

In an earlier paper [3] we have extended the dS cosmos to a genuine expanding model by giving up the condition  $\mathcal{R} = \text{const.}$ , *i.e.*, allowing an expansion of the pseudo-hyper sphere. In this case, the observer's motion described above is related to expansion and is responsible for the recession velocity of the galaxies. In the subluminal model we have proposed this velocity is also geometrically defined. We can access the same formulae as above and we get the results discussed. Even in a generalized expanding model, the speed of light is the unattainable barrier to any motion of galaxies.

If A sends a beam of light to a galaxy B and is reflected back to A, both run-times are equal in accordance with the special theory of relativity, because B can define his position as a pole on the hypersurface. Both distances have the same length and the motion of the light source has no influence on the behavior of a light beam. This applies likewise to motions in the static model as well as to motions caused by expansion in the subluminal model.

With the subluminal model one has a cosmological model at hand which satisfies all requirements of special and general relativity. It is supported by Melia's carefully performed evaluation of observational data. Melia<sup>1</sup> refers to the  $R_h = ct$  model proposed by him which is flat and infinite. However in [2] and [3] we have shown that this model is identical to our subluminal model if we reinterpret the model of Melia using Einstein's elevator principle. It should also be mentioned that Chodorowski [4] [5] [6] has dealt with the question of whether the recession velocity of the galaxies is due to an expansion of space or whether it is a motion in the static space in the sense of Milne.

We have extensively dealt with the transformation of coordinate systems into reference systems in the dS family in the papers [7] [8] [9]. In particular, the paper of Florides [10] should be pointed out.

### 3. The Generalized de Sitter Model

We raise the question of whether the expansion of a cosmos can take place at a lower speed than that of free fall. We simplify the problem by studying it in the dS cosmos. We start with its static form. We define a motion by relativistically subtracting a second velocity from the velocity of free fall.

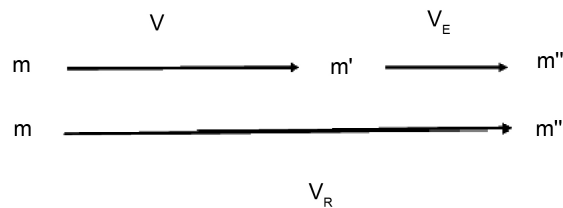
<sup>1</sup>The papers of Melia are listed in [3].

This *double-velocity model* will by no means describe Nature. It only serves to elaborate the mathematical methods. But it can also be stimulating to think about a genuine expanding model that expands more slowly and that predicts to have a lower recession velocity for its galaxies. This can affect the interpretation of the redshift.

To formulate the problem we use the formula apparatus of the special relativity theory for relative velocities. We use the Lorentz transformations

$$\begin{aligned} L_1^{1'} &= \alpha, & L_1^{4'} &= -i\alpha v, & L_4^{1'} &= i\alpha v, & L_4^{4'} &= \alpha \\ L_1^{1''} &= \alpha_E, & L_1^{4''} &= -i\alpha_E v_E, & L_4^{1''} &= i\alpha_E v_E, & L_4^{4''} &= \alpha_E \\ L_1^{1''} &= \alpha_R, & L_1^{4''} &= -i\alpha_R v_R, & L_4^{1''} &= i\alpha_R v_R, & L_4^{4''} &= \alpha_R \end{aligned} \quad (2.1)$$

Therein  $v_R$  is the speed of a fictional observer driven by the dS forces. This velocity is reduced by a second speed  $v_E$ . This gives the actual recession velocity  $v$ . In the formulae  $m''$  tags the fictitious system,  $m'$  the physical comoving system, and  $m$  the static system. We illustrate this with **Figure 2** below:



**Figure 2.** The composition of the velocities.

Furthermore, we need the formulae for the relativistic relation of the velocities

$$v = \frac{v_R - v_E}{1 - v_R v_E}, \quad v_R = \frac{v + v_E}{1 + v v_E}, \quad v_E = \frac{v_R - v}{1 - v_R v} \quad (2.2)$$

together with the Lorentz relations

$$\alpha = 1/\sqrt{1-v^2}, \quad \alpha_R = 1/\sqrt{1-v_R^2}, \quad \alpha_E = 1/\sqrt{1-v_E^2}, \quad (2.3)$$

$$\alpha = \alpha_R \alpha_E (1 - v_R v_E), \quad \alpha_R = \alpha \alpha_E (1 + v v_E), \quad \alpha_E = \alpha_R \alpha (1 - v_R v), \quad (2.4)$$

$$\alpha v = \alpha_R \alpha_E (v_R - v_E), \quad \alpha_R v_R = \alpha \alpha_E (v + v_E), \quad \alpha_E v_E = \alpha_R \alpha (v_R - v). \quad (2.5)$$

The analytic form of the new speed cannot be chosen arbitrarily. All quantities which contain  $v_E$  must satisfy Einstein's field equations and the conservation law. Furthermore, we expect that in case of reduced recession velocity radial repulsive forces in the comoving system still occur, but with lower strength than those in the freely falling system. Furthermore, we expect tidal forces. The latter are easy to derive and they give first useful hints for the ansatz of the velocity  $v_E$ .

In addition, we convince ourselves that the recession velocity is relativistically defined. For the dS coordinate  $r$  applies

$$r_{|1} = \frac{\partial r}{\alpha_R \partial r} = a_R, \quad r_{|4} = 0.$$

Thus, one gets

$$r_{|m} = \{1, 0, 0, 0\} a_R, \quad r_{|m}' = L_m^m r_{|m} = \{\alpha, 0, 0, -i\alpha v\} a_R. \quad (2.6)$$

With  $dx^{4'} = idT'$  one has  $\alpha_R dr/dT' = \alpha v$ . In the dS cosmos is  $dx^1 = \alpha_R dr$  and for the comoving system one has  $dx^{1'} = 0$ ,  $dT/dT' = \alpha$ . This finally results in

$$\frac{dx^1}{dT} = v < v_R, \quad x^{1'} = \text{const.} \quad (2.7)$$

On the other hand, one obtains from  $dx^1 = 0$ ,  $dT'/dT = \alpha$

$$\frac{dx^{1'}}{dT'} = -v, \quad x^1 = \text{const.} \quad (2.8)$$

The recession velocity fits the basic structure of the special theory of relativity.

To calculate the new field quantities, we need the inhomogeneous transformation law of the Ricci-rotation coefficients. Since the motions take place in the [1, 4]-slice of the space, the [2, 3]-quantities transform homogeneously, just like vectors. Thus,

$$B_m = \frac{1}{r} r_{|m} = \{1, 0, 0, 0\} \frac{a_R}{r}, \quad C_m = \frac{1}{r \sin \vartheta} (r \sin \vartheta)_{|m} = \left\{ \frac{a_R}{r}, \frac{1}{r} \cot \vartheta, 0, 0 \right\}$$

$$B_{m'} = L_m^{m'} B_m, \quad C_{m'} = L_m^{m'} C_m$$

applies for the lateral field quantities. With (1.1) they attain the form

$$B_{m'} = \left\{ \alpha \frac{a_R}{r}, 0, 0, -i\alpha v \frac{a_R}{r} \right\}, \quad C_{m'} = \left\{ \alpha \frac{a_R}{r}, \frac{1}{r} \cot \vartheta, 0, -i\alpha v \frac{a_R}{r} \right\}. \quad (2.9)$$

With this we recognize that the radial part and the timelike part of these quantities no longer appear to be flat, as it was the case for the freely falling frame of reference of the dS Model with (1.13). The formula (1.13) for free fall is obtained only if  $\alpha = \alpha_R$ , i.e., if  $v_E = 0$ . If one now demands that the comoving volume element expands equally in all three directions one has

$$B_{4'} \stackrel{*}{=} C_{4'} \stackrel{*}{=} {}^*U_{4'} = -i\alpha v \frac{a_R}{r} \quad (2.10)$$

and thus one has derived the timelike component of the radial quantity  ${}^*U_{m'}$  of the comoving system. Since one must obtain the same expression with the inhomogeneous transformation law of the Ricci-rotation coefficients, one can draw conclusions about the properties of the quantity  $v_E$ .

The inhomogeneous transformation law of the Ricci-rotation coefficients

$${}^*A_{m'n'}^{s'} = A_{m'n'}^{s'} + {}^*L_{m'n'}^{s'} \quad , \quad {}^*L_{m'n'}^{s'} = L_s^{s'} L_{n'}^{s'} |_{m'} \quad (2.11)$$

can be simplified, since in the present case the Lorentz transformation is a pseudo rotation in the [1, 4]-slice of the surface. The inhomogeneous term which we call the Lorentz term, can be expressed with  $h_{m'n'} = \text{diag}\{1, 0, 0, 1\}$  and can be brought into vector form with

$${}^*L_{m'n'}^{s'} = h_{m'}^{s'} {}^*L_{n'} - h_{m'n'} {}^*L^{s'}, \quad {}^*L_{n'} = {}^*L_{s'n'}^{s'} = \left\{ {}^*L_{4'1'}^{4'}, {}^*L_{1'4'}^{1'} \right\}. \quad (2.12)$$

From (2.11) remains only *Einstein's elevator law* [2]



$${}^U U_{m'} = U_{m'} + {}^U L_{m'}, \quad U_{m'} = \{\alpha, 0, 0, -i\alpha v\} \left( -\alpha_R v_R \frac{1}{\mathcal{R}} \right). \quad (2.13)$$

With (2.11), (2.12), and (2.1) we calculate

$${}^U L_{1'} = i\alpha^2 v_{|4'}, \quad {}^U L_{4'} = -i\alpha^2 v_{|1'}.$$

With the help of the relation

$$\alpha^2 dv = \alpha_R^2 dv_R - \alpha_E^2 dv_E$$

we evaluate

$${}^U L_{1'} = i\alpha_R^2 v_{R|4'} - i\alpha_E^2 v_{E|4'}, \quad {}^U L_{4'} = -i\alpha_R^2 v_{R|1'} + i\alpha_E^2 v_{E|1'}.$$

First, we determine the first terms of these relations. In analogy to (1.14) we now have

$$v_{R|m'} = \{1, 0, 0, 0\} a_R \frac{1}{\mathcal{R}}, \quad v_{R|m'} = \{\alpha, 0, 0, -i\alpha v\} a_R \frac{1}{\mathcal{R}}. \quad (2.14)$$

With (2.10) and (2.13) on hand we obtain

$$\begin{aligned} {}^U U_{4'} &= i\alpha v \alpha_R v_R \frac{1}{\mathcal{R}} - \alpha_R^2 \cdot i\alpha \alpha_R \frac{1}{\mathcal{R}} + i\alpha_E^2 v_{E|1'} \\ &= -i\alpha \alpha_R (1 - v v_R) + i\alpha_E^2 v_{R|1'} = -i\alpha_E \frac{1}{\mathcal{R}} + i\alpha_E^2 v_{E|1'}. \end{aligned}$$

We take the value for  ${}^U U_{4'}$  from (2.10) and after some calculation we get

$$v_{E|1'} = a_E v_E \frac{1}{r}. \quad (2.15)$$

Furthermore, we require that the quantity  $v_E$  in the comoving system is time independent, so that we finally obtain

$$v_{E|m'} = \{1, 0, 0, 0\} a_E v_E \frac{1}{r}, \quad v_{E|m'} = \{\alpha, 0, 0, i\alpha v\} a_E v_E \frac{1}{r}. \quad (2.16)$$

Now we are also able to clearly present the Lorentz term

$${}^U L_{m'} = -G_{m'} + l_{m'}, \quad G_{m'} = \{i\alpha v, 0, 0, \alpha\} i\alpha_R \frac{1}{\mathcal{R}}, \quad l_{m'} = \{0, 0, 0, 1\} i\alpha_E v_E \frac{1}{r} \quad (2.17)$$

and also with  $L_m = -L_m^{m'}$  the inverse transformation

$$L_m = G_m - l_m, \quad G_m = \{0, 0, 0, 1\} i\alpha_R \frac{1}{\mathcal{R}}, \quad l_m = \{-i\alpha v, 0, 0, \alpha\} i\alpha_E v_E \frac{1}{r}. \quad (2.18)$$

The components  $G$  and  $l$  are assigned to the changes of  $v_R$  and  $v_E$ , respectively.

Now we can continue with (2.13)

$${}^U U_{1'} = -\alpha \alpha_R v_R \frac{1}{\mathcal{R}} + \alpha \alpha_R v \frac{1}{\mathcal{R}}.$$

Finally, we have with (2.5)

$${}^U U_{m'} = \left\{ -\alpha_E v_E \frac{1}{\mathcal{R}}, 0, 0, -i\alpha v a_R \frac{1}{r} \right\}. \quad (2.19)$$

It can be seen that, in contrast to the “free falling” observer (1.12), radial forces

act on a less rapidly comoving observer

$${}^{\prime}E_{1'} = -{}^{\prime}U_{1'} = \alpha_E v_E \frac{1}{\mathcal{R}},$$

acting repulsively. At the same time tidal forces occur.

With (2.11) we have obtained this quantity from the non-comoving system by an inhomogeneous transformation law. But since the field quantities of the freely falling system are also known, we can derive (2.19) from this system as well.

The inhomogeneous transformation law for  $m'' \rightarrow m'$  is

$${}^{\prime}A_{m'n'}^{s'} = L_{m'n'}^{m''n''s''} {}^{\prime\prime}A_{m''n''}^{s''} + l_{m'n'}^{s'} \quad l_{m'n'}^{s'} = L_{s''n''}^{s'} L_{m'n'}^{m''n''s''} \quad (2.20)$$

The Lorentz term

$$l_{m'} = \{-i\alpha_E^2 v_{E|4'}, 0, 0, i\alpha_E^2 v_{E|1'}\} \quad (2.21)$$

leads to the simple expression

$$l_{m'} = \{0, 0, 0, 1\} i\alpha_E v_E \frac{1}{r} \quad (2.22)$$

which we have already worked out on the way to (2.17). But now we can give a better justification. We write (1.12) as

$${}^{\prime\prime}U_{m''} = \left\{0, 0, 0, -\frac{i}{\mathcal{R}}\right\}, \quad {}^{\prime\prime}U_{m'} = \{-i\alpha_E v_E, 0, 0, \alpha_E\} \left(-\frac{i}{\mathcal{R}}\right)$$

and finally we have recovered the quantity (2.19) with

$${}^{\prime}U_{m'} = {}^{\prime\prime}U_{m'} + l_{m'}. \quad (2.23)$$

We have deduced all field quantities which we need for the generalized version of the dS model.

## 4. The Field Equations of the Generalized dS Model

The ansatz introduced in the last Section for a double-velocity model as a generalization of the dS model can only be justified if the field quantities obtained satisfy Einstein's field equations. For verification, we have to process the quantities

$$B_{m'} = \left\{\alpha \frac{a_R}{r}, 0, 0, -i\alpha v \frac{a_R}{r}\right\}, \quad C_{m'} = \left\{\alpha \frac{a_R}{r}, \frac{1}{r} \cot \vartheta, 0, -i\alpha v \frac{a_R}{r}\right\}, \quad (3.1)$$

$${}^{\prime}U_{m'} = \left\{-\alpha_E v_E \frac{1}{\mathcal{R}}, 0, 0, -i\alpha v \frac{a_R}{r}\right\}$$

With these quantities and the unit vectors

$$m_{m'} = \{1, 0, 0, 0\}, \quad b_{m'} = \{0, 1, 0, 0\}, \quad c_{m'} = \{0, 0, 1, 0\}, \quad u_{m'} = \{0, 0, 0, 1\} \quad (3.2)$$

the Riccitor and Ricci scalar take the form

$$R_{m'n'} = - \left[ {}^{\prime}U_{1'}^{s'} + {}^{\prime}U_{s'}^{s'} {}^{\prime}U_{1'}^{s'} \right] h_{m'n'} - \left[ B_{n'}^{s'} B_{m'}^{s'} + B_{n'}^{s'} B_{m'}^{s'} \right] - b_{n'} b_{m'} \left[ B_{2'}^{s'} + B_{s'}^{s'} B_{s'}^{s'} \right] - \left[ C_{n'}^{s'} C_{m'}^{s'} + C_{n'}^{s'} C_{m'}^{s'} \right] - c_{n'} c_{m'} \left[ C_{3'}^{s'} + C_{s'}^{s'} C_{s'}^{s'} \right] - \frac{1}{2} R = \left[ {}^{\prime}U_{1'}^{s'} + {}^{\prime}U_{s'}^{s'} {}^{\prime}U_{1'}^{s'} \right] + \left[ B_{2'}^{s'} + B_{s'}^{s'} B_{s'}^{s'} \right] + \left[ C_{3'}^{s'} + C_{s'}^{s'} C_{s'}^{s'} \right] \quad (3.3)$$

Therein we have used the graded derivatives [11] [12]

$$\begin{aligned} {}^1U_{n||m'} &= {}^1U_{n|m'} \\ B_{n||m'} &= B_{n|m'} - {}^1U_{m'n'} {}^{s'}B_{s'}, \quad C_{n||m'} = C_{n|m'} - {}^1U_{m'n'} {}^{s'}C_{s'} - B_{m'n'} {}^{s'}C_{s'}, \end{aligned} \quad (3.4)$$

which allow a clear representation of the field equations. The subequations of (3.3) describe the curvatures in the radial and lateral slices of the dS space, as viewed by the comoving observers. Therefore we solve the subequations of Einstein's field equations separately

$$\begin{aligned} {}^1U^{s'}_{|s'} + {}^1U^{s'}U_{s'} &= -\frac{1}{\mathcal{R}^2} \\ B_{m'||n'} + B_{m'}B_{n'} &= -h_{m'n'} \frac{1}{\mathcal{R}^2}, \quad B^{s'}_{||s'} + B^{s'}B_{s'} = -\frac{2}{\mathcal{R}^2} \\ C_{m'||n'} + C_{m'}C_{n'} &= -(h_{m'n'} + b_{m'}b_{n'}) \frac{1}{\mathcal{R}^2}, \quad C^{s'}_{||s'} + C^{s'}C_{s'} = -\frac{3}{\mathcal{R}^2} \end{aligned} \quad (3.5)$$

With this we get for the Ricci-quantities

$$R_{m'n'} = g_{m'n'} \frac{3}{\mathcal{R}^2}, \quad R = \frac{12}{\mathcal{R}^2}, \quad G_{m'n'} = -g_{m'n'} \frac{3}{\mathcal{R}^2} = -\kappa T_{m'n'}. \quad (3.6)$$

From the last relation we get for the components of the stress-energy-momentum tensor and the equation of state

$$\kappa p = -\frac{3}{\mathcal{R}^2}, \quad \kappa \mu_0 = \frac{3}{\mathcal{R}^2}, \quad p + \mu_0 = 0. \quad (3.7)$$

The values obtained are equal to those of the static dS cosmos. We note that matter transport cannot be observed in the comoving system. The cause is the form of the equation of state. For all models with  $p + \mu_0 = 0$  one has  $T_{1,4} = 0$ , as we can easily convince ourselves with the transformation  $T_{m'n'} = L_{m'n'}^{m\ n} T_{mn}$ .

## 5. More about the Velocities

While the velocity  $v_R = r/\mathcal{R}$  is geometrically determined, we do not so far have knowledge of the second part of the recession velocity. We only know the change from  $v_E$  which we have determined as a general feature of the model. We have succeeded in establishing plausible field quantities which fulfill Einstein's field equations and which lead to the familiar expressions for the pressure and the density of matter in the cosmos.

Now we will examine whether an analytic expression can be found which is compatible with all relations of Section 4 and provides a deeper insight into the geometric structures of the model.

We put

$$v_E = \frac{r}{{}^1\mathcal{R}}, \quad {}^1\mathcal{R} = {}^1\mathcal{R}(T'). \quad (4.1)$$

${}^1\mathcal{R}$  is a new time-dependent parameter and we notice the analogy with the definition  $v_R = r/\mathcal{R}$ . Thus, we can assume that  $v_E$  has a similar geometrical

meaning in a fictive cosmos, which is preliminary to the dS cosmos, where  $v_R$  is well defined.

For the recession velocity of the galaxies we then have

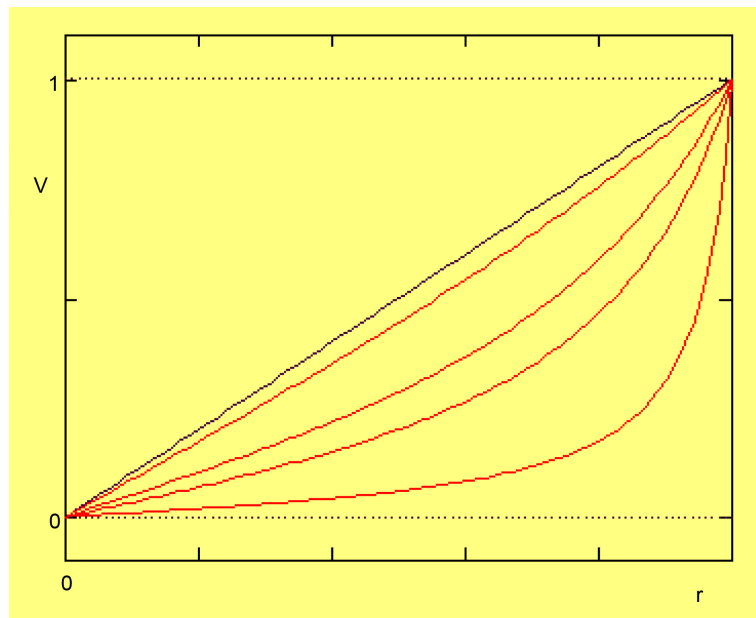
$$v = \frac{\frac{r}{\mathcal{R}} - \frac{r}{{}'\mathcal{R}}}{1 - \frac{r^2}{\mathcal{R} {}'\mathcal{R}}} \quad (4.2)$$

according to (2.2). For  $'\mathcal{R} = \mathcal{R}$  the recession velocity is  $v = 0$ . For  $'\mathcal{R} \rightarrow \infty$  is  $v_E = 0$  and  $v$  takes its maximum value, namely the dS velocity. At the cosmic horizon, the recession velocity asymptotically reaches the velocity of light regardless of the value of  $v_E$ . Thus, the ranges of  $'\mathcal{R}$  and  $r$  are

$$\mathcal{R} \leq {}'\mathcal{R} \leq \infty, \quad 0 \leq r \leq \mathcal{R} \quad (4.3)$$

and  $'\mathcal{R}$  is a parameter with which one can manipulate the recession velocity  $v$ . If this technique can be applied to a model that is closer to Nature, the calculable redshift values may be better adapted to the values observed. In **Figure 3**, the recession velocity is plotted in the range  $0 \leq r \leq \mathcal{R}$  for different  $'\mathcal{R}$ . It can be seen that a deviation from the linear velocity law ( $'\mathcal{R} = \infty$ ) by an appropriate choice of  $'\mathcal{R}$  is possible.

Since  $v$  depends on time, as shown in (4.1) and (4.2), the generalized dS model allows accelerations of the drifting systems.



**Figure 3.** Recession velocity.

Now all we have to do is to show that the approach (4.1) meets the requirements made in the previous sections. In particular, we have to check if

$$v_{E|m'} = \{1, 0, 0, 0\} a_E v_E \frac{1}{r} \quad (4.4)$$

is well-matched with Equation (2.6) and (4.1). Following (4.1) we write

$$v_{E|m'} = v_E \left( \frac{1}{r'} r_{|m'} - \frac{1}{\mathcal{R}} \mathcal{R}_{|m'} \right). \quad (4.5)$$

Since (2.14) has already been calculated, we only need to know more about the quantity

$$\mathcal{R}_{m'} = \frac{1}{\mathcal{R}} \mathcal{R}_{|m'} \quad (4.6)$$

which we obtain by equating (4.4) with (4.5). After some calculation and repeated use of (2.3)-(2.5) we get

$$\mathcal{R}_{m'} = \left\{ -\alpha v a_R \frac{1}{\mathcal{R}}, 0, 0, -i \alpha v a_R \frac{1}{r'} \right\}.$$

We recognize that the 4th component of this quantity has already arisen as  $\mathcal{U}_4$ . Applying again the Lorentz relations leads to

$$\mathcal{R}_{m'} = \{ -i \alpha_E v_E, 0, 0, \alpha_E \} \left( \frac{i}{\mathcal{R}} - \frac{i}{\mathcal{R}} \right), \quad \mathcal{R}_{m'} = \{ 0, 0, 0, 1 \} \left( \frac{i}{\mathcal{R}} - \frac{i}{\mathcal{R}} \right). \quad (4.7)$$

The second relation (4.7) contains the already known expression

$\mathcal{U}_4 = -i/\mathcal{R}$  which results from the temporal change of the scale factor  $\mathcal{R}$ .

Therefore the ansatz (4.1) is satisfactory and thus (4.4) can be written as

$$v_{E|m'} = \{ 1, 0, 0, 0 \} \frac{a_E}{\mathcal{R}}, \quad a_E = \sqrt{1 - \frac{r^2}{\mathcal{R}^2}}, \quad (4.8)$$

*i.e.*, in the same way as in (2.14). The inhomogeneous transformation law of the Ricci-rotation coefficients can be simplified with the quantities (2.17) and (2.18), if one considers (4.1)

$$\begin{aligned} G_m &= \{ 0, 0, 0, 1 \} i \alpha_R \frac{1}{\mathcal{R}}, \quad l_m = \{ -i \alpha v, 0, 0, \alpha \} i \alpha_E \frac{1}{\mathcal{R}} \\ G_{m'} &= \{ i \alpha v, 0, 0, \alpha \} i \alpha_R \frac{1}{\mathcal{R}}, \quad l_{m'} = \{ 0, 0, 0, 1 \} i \alpha_E \frac{1}{\mathcal{R}}. \\ \mathcal{U}_{m'} &= \{ i \alpha_E v_E, 0, 0, \alpha_E \} \left( -\frac{i}{\mathcal{R}} \right) + \{ 0, 0, 0, 1 \} \alpha_E \frac{i}{\mathcal{R}} \end{aligned} \quad (4.9)$$

One should note the analogy of the quantities  $G$  and  $l$ .

## 6. Coordinate Transformations

The model described above was carried out in the tetrad calculus. A resort to a coordinate system was only necessary when basic mathematical operations had to be performed. For this, the static dS coordinate system was sufficient. Cosmologists, however, are trying to find coordinate systems for both the comoving and the non-comoving frames of reference. We want to investigate whether coordinate systems exist for all states of motion and also transformations between them. The reader who is only interested in the general structure of the model can skip this section.

Coordinate systems have been known for the static and the fictitious comoving systems since de Sitter and Lemaître. The question is, however, whether there is not only a frame of reference for the physical comoving system, but also a coordinate system.

To get closer to the problem, let us start with the static dS system

$$e_1^1 = \alpha_R, \quad e_2^2 = r, \quad e_3^3 = r \sin \vartheta, \quad e_4^4 = a_R, \quad a_R = 1/\alpha_R = \sqrt{1 - r^2/\mathcal{R}^2} \quad (5.1)$$

and the expanding one

$$e_{1''}^1 = \mathcal{K}, \quad e_{2''}^2 = r, \quad e_{3''}^3 = r \sin \vartheta, \quad e_{4''}^4 = 1, \quad \mathcal{K} = \frac{r}{r''}, \quad (5.2)$$

where  $r$  is the non-comoving and  $r''$  is the comoving radial coordinate and  $\mathcal{K}$  the scale factor. From (5.2) it can be seen that the coordinate time and the proper time of the drifting observers coincide ( $t'' = T''$ ).  $T''$  is the cosmic time common to all drifting observers.

The coordinate transformation between the two systems has been given in (2.9)<sup>2</sup> and the associated Lorentz transformation in (1.11). Since the Lorentz transformation to the physical system is known as (2.1), we first transform the static system (5.1) into the physically comoving system while maintaining the static coordinates

$$\begin{aligned} e_1^{1'} &= \alpha \alpha_R, & e_1^{4'} &= -i \alpha v \alpha_R, & e_4^{1'} &= i \alpha v \alpha_R, & e_4^{4'} &= i \alpha \alpha_R \\ e_{1'}^1 &= \alpha \alpha_R, & e_{4'}^1 &= -i \alpha v \alpha_R, & e_{1'}^4 &= i \alpha v \alpha_R, & e_{4'}^4 &= \alpha \alpha_R. \end{aligned} \quad (5.3)$$

The Ricci-rotation coefficients for this system provide the values obtained in the previous Section. With the help of

$$e_{i'}^{m'} = \Lambda_{i'}^i e_i^{m'} \quad (5.4)$$

the system can be diagonalized. For the matrix of the coordinate transformation we get

$$\Lambda_{i'}^i = \begin{pmatrix} \frac{\alpha^2 v}{\alpha_R^2} & & & \\ & -i \frac{\alpha^2 v}{\alpha_R^2} & & \\ & & 1 & \\ & & & 1 \end{pmatrix}, \quad \Lambda_{i'}^{i'} = \begin{pmatrix} \frac{\alpha_R^2}{v} & & & i \\ & 1 & & \\ & & 1 & \\ -i \alpha_R^2 v & & & 1 \end{pmatrix}. \quad (5.5)$$

Alternatively, one can start with the freely falling dS system

$$e_{i''}^{m'} = L_{m''}^{m'} e_{i''}^{m''}, \quad e_{i'}^{m'} = e_{i''}^{m'} \Lambda_{i'}^{i''}. \quad (5.6)$$

With

$$\Lambda_{i'}^{i''} = \begin{pmatrix} \frac{1}{\mathcal{K}} \alpha_E \frac{\alpha v}{\alpha_R} & & & i \frac{1}{\mathcal{K}} \alpha_E v_E \frac{\alpha}{\alpha_R} \\ & 1 & & \\ & & 1 & \\ -i \alpha_E v_E \frac{\alpha v}{\alpha_R} & & & \alpha_E \frac{\alpha}{\alpha_R} \end{pmatrix}, \quad \Lambda_{i''}^{i'} = \begin{pmatrix} \mathcal{K} \alpha_E \frac{\alpha_R}{\alpha v} & & & -i \alpha_E v_E \frac{\alpha_R}{\alpha v} \\ & 1 & & \\ & & 1 & \\ -i \mathcal{K} \alpha_E v_E \frac{\alpha_R}{\alpha} & & & \alpha_E \frac{\alpha_R}{\alpha} \end{pmatrix}$$

<sup>2</sup>The primes on the indices of Section 2 are now to be replaced by double primes.

(5.7)

one also arrives at the diagonalized system for the physical comoving observer:

$$e_{1'}^{1'} = \frac{\alpha v}{\alpha_R}, \quad e_{4'}^{4'} = \frac{\alpha}{\alpha_R}, \quad e_{1'}^{1'} = \frac{\alpha_R}{\alpha v}, \quad e_{4'}^{4'} = \frac{\alpha_R}{\alpha}. \quad (5.8)$$

Herewith the line element takes the form

$$ds^2 = \frac{\alpha^2 v^2}{\alpha_R^2} dr'^2 + r'^2 d\vartheta^2 + r'^2 \sin^2 \vartheta d\varphi^2 - \frac{\alpha^2}{\alpha_R^2} dt'^2. \quad (5.9)$$

The two observer transformations (5.5) and (5.7) are related to the holonomic Lemaître transformation (1.9) by

$$\Lambda_i^{i''} = \Lambda_i^{i'} \Lambda_{i'}^{i''}, \quad \Lambda_i^{i''} = x^{i''}_{|i}.$$

It can be seen that there is no cosmic universal time for the comoving physical observer system. Rather, one has for the proper time of the observers

$$dT' = \frac{\alpha}{\alpha_R} dt' \quad (5.10)$$

in accordance with the general theory of relativity.

However, the Ricci-rotation coefficients cannot be derived from the 4-bein system (5.8), as we have learned in the previous sections. The reason is the anholonomicity of the two coordinate transformations (5.5) and (5.7). One easily convinces oneself that

$$\Lambda_{[i|k]}^{j'} \neq 0 \Rightarrow \Lambda_i^{j'} \neq x^{j'}_{|i}, \quad \Lambda_{[i''|k'']}^{j''} \neq 0 \Rightarrow \Lambda_{i''}^{j''} \neq x^{j''}_{|i''}. \quad (5.11)$$

Thus, there exists no associated global coordinate mesh for the comoving observer system, but only anholonomic coordinates. These are mathematical artifacts described in detail by Schouten [13].

If one proceeds in the usual way and elaborates with (5.8) the expression

$$A_{m'n'}^{j's'} = e_{j'}^{s'} e_{[n'|m']}^{j'} + g^{s'r'} g_{n't'} e_{j'}^{t'} e_{[r'|m']}^{j'} - g^{s'r'} g_{m't'} e_{j'}^{t'} e_{[r'|n']}^{j'}$$

and if one then complements the *object of anholonomy*

$$\Lambda_{m'n'}^{s'} = e_{m'}^{i'} e_{n'}^{k'} e_{j'}^{s'} \Lambda_{j'}^i \Lambda_{[k|i]}^j \quad (5.12)$$

one finally gains the Ricci-rotation coefficients

$${}^i A_{m'n'}^{s'} = A_{m'n'}^{s'} + \Lambda_{m'n'}^{s'} + \Lambda_{m'n'}^{s'} + \Lambda_{m'n'}^{s'} \quad (5.13)$$

with the values known of Section 3.

It is clear that the search for coordinate systems which accompany the families of observers is not necessary and often not practical.

## 7. Conclusions

We have proposed a model which we do not assume to be realized by Nature. However, it includes useful mathematical techniques which can be transferred to more sophisticated models. In particular, it is possible to reduce the recession

velocity of the galaxies compared to those of the “free fall” and thus to manipulate the calculated values for the redshift. This could allow a better adjustment to the observed values.

In the next step, by dropping the relation  $\mathcal{R} = \text{const.}$ , we want to examine a genuine expanding model with these methods. We hope to publish this elsewhere.

## References

- [1] Lemaître, G. (1933) *Annales de la Société scientifique de Bruxelles*, **A53**, 51-85.
- [2] Burghardt, R. (2016) *Journal of Modern Physics*, **7**, 2347-2356.  
<https://doi.org/10.4236/jmp.2016.716203>
- [3] Burghardt, R. (2017) *Journal of Modern Physics*, **8**, 583-601.  
<https://doi.org/10.4236/jmp.2017.84039>
- [4] Chodorowski, M.J. (2016) A Direct Consequence of the Expansion of Space?  
<https://arxiv.org/pdf/astro-ph/0610590.pdf>
- [5] Chodorowski, M.J. (2005) Cosmology under Milne’s Shadow.  
<https://arxiv.org/pdf/astro-ph/0503690.pdf>
- [6] Chodorowski, M.J. (2008) Eppure si muove. <https://arxiv.org/pdf/0812.3972.pdf>
- [7] Burghardt, R. (2016) Austrian Reports on Gravitation.  
<http://arg.or.at/Wpdf/WTrans1.pdf>
- [8] Burghardt, R. (2016) Austrian Reports on Gravitation.  
<http://arg.or.at/Wpdf/WTrans2.pdf>
- [9] Burghardt, R. (2016) Austrian Reports on Gravitation.  
<http://arg.or.at/Wpdf/WTrans3.pdf>
- [10] Florides, P.S. (1980) *GRG*, **12**, 563-574. <https://doi.org/10.1007/BF00756530>
- [11] Burghardt, R. (2016) Spacetime Curvature. 1-597.  
<http://arg.or.at/EMono.htm>
- [12] Burghardt, R. (2016) Raumkrümmung. 1-623.  
<http://arg.or.at/Mono.htm>
- [13] Schouten, J.A. (1954) Ricci-Calculus. Springer, Berlin Heidelberg.  
<https://doi.org/10.1007/978-3-662-12927-2>