

A GIS-Based Methodology to Estimate the Regional Balance of Potential and Demand of Forest Chips

Mikko Nivala¹, Perttu Anttila², Juha Laitila², Olli Salminen², Martti Flyktman³

¹University of Eastern Finland, Joensuu, Finland

²Natural Resources Institute of Finland, Joensuu, Finland

³VTT Technical Research Centre of Finland Ltd, Jyväskylä, Finland

Email: nivala@student.uef.fi, perttu.anttila@luke.fi, juha.laitila@luke.fi, olli.salminen@luke.fi, martti.flyktman@pp.inet.fi

How to cite this paper: Nivala, M., Anttila, P., Laitila, J., Salminen, O. and Flyktman, M. (2016) A GIS-Based Methodology to Estimate the Regional Balance of Potential and Demand of Forest Chips. *Journal of Geographic Information System*, 8, 633-662. <http://dx.doi.org/10.4236/jgis.2016.85052>

Received: September 26, 2016

Accepted: October 28, 2016

Published: October 31, 2016

Copyright © 2016 by authors and Scientific Research Publishing Inc. This work is licensed under the Creative Commons Attribution International License (CC BY 4.0).

<http://creativecommons.org/licenses/by/4.0/>



Open Access

Abstract

Finland's national aim for annual consumption of forest chips is 25 terawatt hours (TWh) (equivalent to 13.5 million solid cubic metres) in combined heat and power (CHP) production and heat production in 2020. On average, the techno-economic potential of forest chips enables reaching the target at the national level. However, there is a geographical mismatch between the supply and demand regions. In this study, the regional balance of potential and demand from 2012 until 2020 was assessed using GIS-based methods. Economical, technical and ecological constraints were taken into account when different scenarios for municipality-level potentials were calculated. The forest chips' consumption scenarios for plant-level were determined statistically (2012) or predicted (2020) by assuming that the total consumption of forest chips will reach the 13.5 Mm³. With help of procurement model, the use of different forest energy fuel types (stumps, logging residues and small-sized thinning wood) was spread to the procurement ring with the help of GIS coding. The forest chips' regional balance map was made by subtracting the use of heat and combined heat and power plants' (CHP) forest chips' consumption from the municipality level potential data. The GIS-based method for balance calculation requires a significant amount of computer power but works well for local, municipality, regional and national-level balance calculations. The study showed that there are enough forest chips to supply the current and future demand when all forest energy assortments are used efficiently and in a sustainable manner. However, the results indicate that already at the present rate of forest chip consumption, in some areas there will not be any extra potential left. When consumption increases, the zero-potential area, in particular on the coast, expands. The highest free potential can be found in eastern and northern areas of Finland while the western and southern areas lack free potential.

Keywords

GIS-Based Methodology, Forest Chips, Potential, Balance, Bioenergy

1. Introduction

Finland has been committed to the EU's policy framework for climate and energy until 2020. EU member countries should produce 20% of their energy using renewable sources by the year 2020. Finland's national target is to increase the use of renewables from 28.5% to 38% in total energy consumption [1]. Wood-based energy, especially forest chips, will have an important role when increasing renewable energy use in Finland.

Forest chips originate from harvesting of small-sized thinning wood in young forests, logging residues from regeneration cuttings (branches, crowns and other wood materials that have no industrial use), and regeneration cutting area stumps, roots and decayed stems that have no industrial purposes. Wood energy that comes from side products or by-products of the wood industry, for example, bark, sawdust and black liquor, is already exploited fully, which means that there is no chance to increase wood energy usage other than to increase the use of forest chips if the use of industrial roundwood does not increase in Finland.

Finland's national renewable energy action plan [2] and Energy and Climate Strategy's [3] aim for annual consumption of forest chips in combined heat and power (CHP) production and separate heat production in Finland in 2020 is 25 terawatt hours (TWh), which is equivalent to 13.5 million solid cubic metres (Mm^3). The strategy also aims to increase significantly the use of forest chips as feedstock for transportation fuels. The national target for transportation fuels is 7 TWh in the year 2020 originating from renewable sources [2].

The estimated total consumption of energy in Finland in 2012 was 382 TWh. The use of wood energy in the year 2012 was, in total, 92 TWh. Forest chip consumption was 8.3 Mm^3 [4]. The major users of forest chips (7.6 Mm^3) were heat and combined heat and power plants (CHP). Around 0.7 Mm^3 of forest chips were used in the farms and properties' heating systems [4]. In the year 2015 the use of forest chips was slightly decreased to 8 Mm^3 which is including the use of forest chips in heating and CHP plants (7.3 Mm^3) and in small households (0.7 Mm^3) [5].

When estimating the amount of forest chips, the basis for the estimation is the theoretical maximum potential [6]. Theoretical potential includes the thinning wood biomass coming from forest management practices and the felled trees that stay in the forest after thinning, logging residues, stumps and roots. Theoretical potential can also include the cutting savings, which means the difference between the annual growth and its reduction. Theoretical potential is not possible to exploit fully because many technical, economical, ecological and social factors limit the potential, and each of these needs

to be estimated separately [6]. These kinds of limitations are, for example, the technical capability or recovery rate in the harvesting site, storage losses, quality need of raw material (can the plant use a whole tree or only delimbed stemwood), the size of the harvesting area and the average harvesting volume per hectare (economic aspect), forest owners' willingness to sell the wood and forest management guidelines and good practices, which are meant to reduce harmful effects on forest growth or the environment. In addition to these, also the forest energy competitiveness compared to other fuels reduces the theoretical potential [6].

There have been several earlier studies aimed at estimating the forest chips supply and demand problems in Finland. Anttila *et al.* [7] used the National Forest Inventory plot information to estimate the annual small-sized thinning wood potential to be 6.2 - 10.4 Mm³ depending on harvesting methods. The logging residues potential was 4.0 - 6.6 Mm³ and spruce (*Picea abies*) stump potential was 1.5 - 2.5 Mm³, depending on the annual cutting level. In the study, the municipality level cutting statistic was converted to the forest energy potential using coefficients from earlier studies [8] [9]. This problem with this approach is that it is only limited to current cutting levels. Also, this study did not include the regional differences in the proportion of logs from clearcutting in different parts of Finland. Ranta did a study on logging residue potential and estimated also the balance based on the usage of selected plants [10]. In another study by Ranta [11], a GIS approach similar to that used in this study was employed, but only the 50 biggest plants' forest chip demands were taken into account.

A similar study has also been done in Japan [12] where logging residues, thinned trees, and selectively cut trees from broad-leaved forests were defined as the forest biomass and the availability of biomass was calculated based on the supply costs and topographical conditions. This study was done for a specific mountainous region of Japan and not for the whole nation. Also, several similar regional potentials of wood or forest biomass have been carried out for example in the United States [13], in Northern Spain [14], in Canada [15] Norway [16] and Slovakia [17]. In Japan also a study of the usage of forest biomass has been carried out with the help of GIS [18]. There are several European-level studies of wood or forest biomass potential on a European scale [19] [20] [21] [22] as well as several national-level potential studies which are not based on GIS-methods.

GIS-based methods have also been used in other biomass potential evaluations, for example, Voivontas [23] studied agricultural residues potential for power production on the island of Crete. In the study, electricity generation cost was used as a criterion for the identification of the sites of economically exploited biomass potential. Also, bioenergy potential has been estimated in England, where spatial data was used on potential supply and demand to predict bioenergy potential [24]. The study was concentrated on miscanthus biomass and the costs of biomass feedstock transportation is taken into account, as well as the energy use and the spatial relationship between potential supply and demand. Several regional-level studies have also been carried out in, for example, Northern Italy [25] [26], Portugal [27] [28], India [29] [30] and Chinese

Taipei [31]. In Finland, biomass potential for biogas production was examined by using a GIS-based methodology, which also included biomass transport optimization considering the existing road network and spatially varied biomass sources [32]. The study used a method where the Kernel Density (KD) maps were calculated to pinpoint areas with high biomass concentration.

There are only a few national-level forest energy potential calculations that are based on GIS [7] [10] [33] [34]. Only the study by Anttila and a study by Ranta have taken into account the demand, as well as the balance, of supply and demand. Both studies had some limitations. For example, the study by Ranta concentrated only on one forest chip assortment. There is a clear need to create a new study of this topic and create a calculation method and process for a national-level forest balance calculation that could also be used in other regions or locally to support renewable energy use.

The aim of the study was to 1) estimate and visualize forest chips' potential in Finland 2) calculate and estimate forest chips' use in heat and CHP plants in Finland in 2020 and 3) calculate the difference between the potential and use of forest chips, which can be referred to as the forest chips' balance map, in Finland from 2012 to 2020. The forest chips' balance is calculated as solid cubic metres (m³).

2. Materials and Methods

2.1. Forest Chips Potential

The forest chips potential consists of small-sized thinning wood from the young forest and logging residues and stumps from regeneration cuttings.

2.1.1. Small-Sized Thinning Wood from Young Forest

The small-sized thinning wood potential is based on Finland's 10th National Forest Inventory (NFI 10) data [35]. The field plots have been measured between years 2004–2008. Potentials have been calculated for the municipality level using three different harvesting options.

In all these harvesting options, the minimum yield of harvested energy wood was set to be 25 m³/ha, which was assumed to be the level at which harvesting would be economical. Two of the options were energy wood only harvesting (delimbed stemwood and whole tree), where the maximum yield of industrial roundwood was set to 45 m³/ha and stands which have higher accumulation, were allocated to industrial roundwood use. In the whole tree option, also living branches were added to the potential. In the third option, the harvesting method was integrated energy wood and industrial wood harvesting. In this integrated option, only pure coniferous tree or birch plots, where the dominant tree species accumulation was greater than 20 m³/ha, the average size of harvested tree was greater than 30 dm³ and energy wood harvesting accumulation was greater than 25 m³/ha, were included to the potential. Energy wood from this integrated option was assumed to be delimbed stemwood, as harvesting will be done with the same harvester and at the same time as the industrial roundwood harvesting. If the roundwood accumulation was less than 20 m³/ha, the plot was assumed to be energy wood only use.

ing the wholetree harvesting method. In all these options the stemwood and branches technical recovery rates were assumed to be 100%. In the wholetree harvesting, dead branches were assumed to fall off during harvesting and transportation.

The NFI results were in MS Excel format and they were moved to the ArcGIS 10.2. environment using municipality layer and municipality ID. The visualization process is described in **Figure 1**.

2.1.2. Logging Residues and Stump Biomass Potentials from Regeneration Cuttings

In this study, the estimation of logging residues and stumps is based on the regional cutting possibility results available at <http://www.metla.fi/metinfo/mela> and which were made using the MELA program, a forest planning tool of Natural Resources Institute Finland (Luke) [36]. The used MELA results are based on the National Forest Inventory plots measured during the years 2008-2012 (<http://www.metla.fi/metinfo/vmi/>). The maximum scenario (MAX) maximizes the net present value at a 4% discounted rate subject to non-declining periodic total roundwood and energy wood removals, saw log removals and net income. There are no sustainability constraints concerning tree

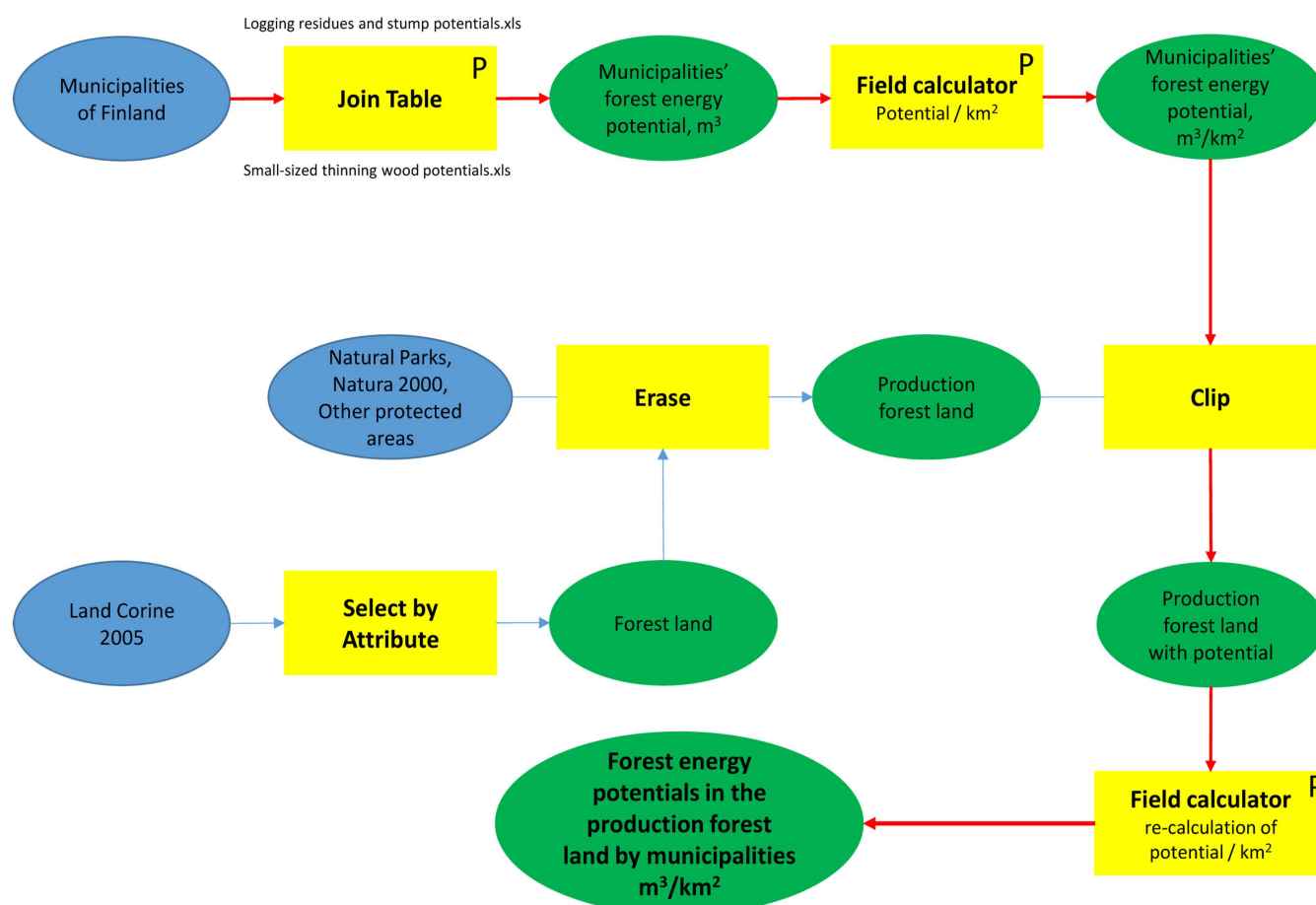


Figure 1. Process of forest chips potential creation using GIS. In the figure, the letter P inside the box indicates that the function is parametrized and allows analyses for different fuel sources.

species, cutting methods, age classes or the growth/drain ratio in order to efficiently utilize the dynamics of forest structure. In the business as usual (BAU) scenario, the net present value is maximized with a 4% discount rate subject to realized cutting levels in studied regions during the years 2009-2012.

The estimated forest energy potentials from regeneration cuttings were brought into the GIS environment joined with the municipality layer, and then converted using the process described in **Figure 1** with the production forest layer.

2.2. Forest Chips Use in Finland

We apply two scenarios for the future use of forest chips in this study. The first scenario is based on the realized usage of forest chips in the year 2012 (<http://stat.luke.fi/en>). The second scenario is based on the official target that Finland will achieve forest chips use equal to 13.5 Mm³/year by the year 2020 [3].

2.2.1. Use of Forest Chips in 2012

In the year 2012, there were 860 plants using forest chips and their total consumption of forest chips in solid cubic metres was 7.6 Mm³ [37]. The proportion of imported wood from this sum was 400,000 m³. Most of the forest chips users were small plants (**Figure 2**). There were only 21 plants that used more than 100,000 m³ forest chips, but they represented more than half of the total forest chips consumption. The statistic included information about plant size, fuel types, size and city. The exact location was collected during the study and each plant was geocoded into GIS using ArcGIS 10.2.

2.2.2. Use of Forest Chips in 2020

VTT, the Technical Research Centre of Finland, has collected data of Finland's forest chips end-use facilities for over 30 years. The database includes more than 400 plants with basic information: combustion technology, boiler size and efficiency, year of building or renovation year and raw material used. With the help of the database, a prediction of the plants that need to be renovated in the coming years was made. The smaller plants that were not in the database were assumed to use the same amount of forest chips in the year 2020 than in 2012. The use of forest chips was planned in a way that Finland will achieve its 13.5 Mm³ target of forest chips use in the year 2020.

The use of forest chips in 2020 was estimated to be primary energy consumption, and it was converted to the solid cubic metres of energy wood using the coefficient 2 MWh/m³. The forest chips source proportion (fuel types: stumps, logging residues and thinning wood) was assumed to be similar as in a 2012 statistic [37]. The imported wood energy was also assumed to be at a similar level as it was in 2012, meaning that the amount was increasing from 400,000 m³ to 600,000 m³ in the year 2020. It was also assumed that the plants will not start immediately to use the higher amount of wood energy, but will slowly increase the use of forest chips until reaching their set value in the year 2020. This decision was based on the fact that the increased use of forest chips requires also more resources, which might mean that it will take time before the plants are ready to operate at full capacity. The only exception to this rule was the new plants

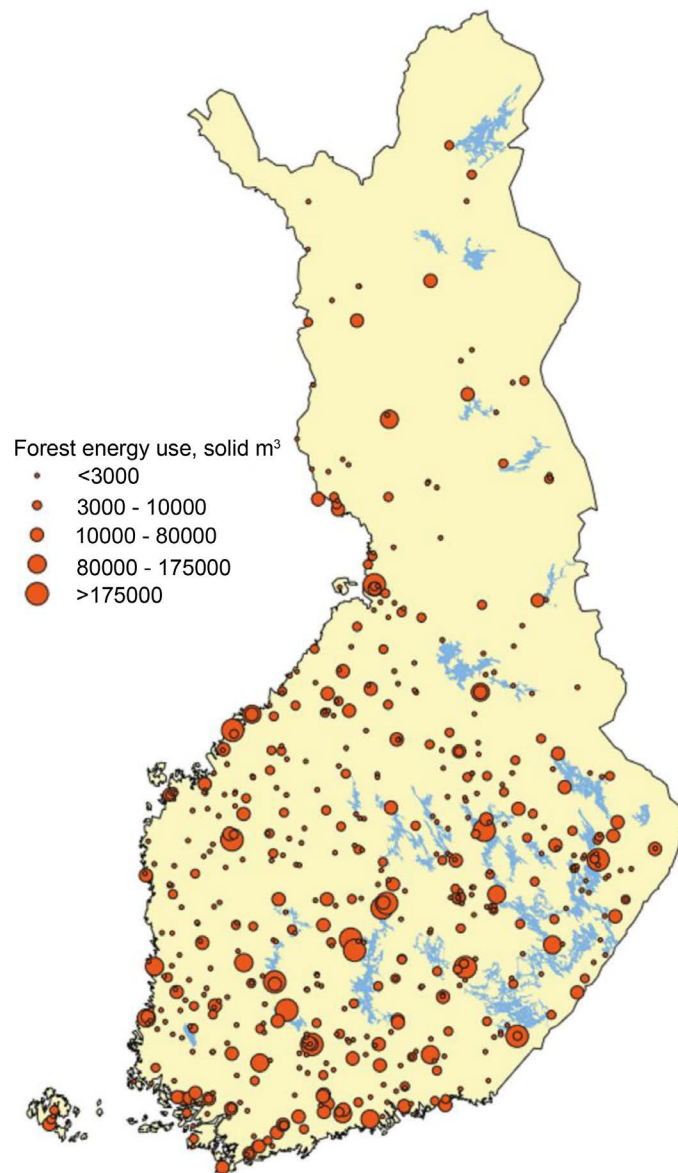


Figure 2. Plants that used forest chips in Finland in 2012. Plants have been classified into five different categories depending on the amount of chips consumed.

which started to use their estimated amount after the estimated building time. In new plants it is typical that the proportion of forest chips used varies in the larger plants between 60% - 80% but smaller plants will use only forest chips. Complementary fuels in bigger plants in Finland are typically peat and coal. The study also takes into consideration the fact that renewing the plant will take a time. Typically a plant is used for decades, and if the fuel type is going to be changed, new units are needed. Even though many smaller plants are popping-up each year, the biggest effect on the total consumption of forest chips in Finland is due to the big CHP plants, which have started to use renewable energy. It was assumed that the use of peat would also increase to the

level of 16 TWh for the year 2020 when allocating and estimating the use of forest chips in the year 2020. At the same time, it was assumed that the condensing power production using forest chips would decrease when the new planned nuclear plants are ready in Finland. To achieve the target of 2020, new big plants that use forest chips will be needed in Finland. For example, in this study, it was estimated that in the Helsinki region, the use of forest chips will increase to the level of three TWh because of the new forest energy projects.

2.2.3. Modelling the Procurement of End-Use Facilities

The plant database was converted and geocoded to the GIS environment where the modelling of the procurement was done for each plant. The procurement area was based on earlier research [38]. The plants were categorized into five different classes according to the size of the plant. For each class, the maximum procurement distance was determined using the same distances as in [38] **Table 1**.

In the procurement model, it was included that the plant is trying to obtain the raw material as close to the plant as possible. This was done by using different procurement circles for each size of plant class, presented earlier in **Table 1**. The plant tries to get the same amount of raw material from all the procurement circles, which leads to the situation where the procurement intensity is higher closer to the plant where the procurement circle is smaller. When the circle size increases, and the procurement happens further from the plant, also the procurement intensity is lower per square kilometre. For smaller plants it was assumed that they have only one procurement circle, but the bigger plants will always have one procurement circle more when the plant class category is higher. The biggest plants (plant class number five) will then have five procurement circles (**Figure 3**). The maximum Euclidian procurement distance in this study was decided to be 200 kilometres. The use of different forest energy fuel sources in each plant was dependent on the statistics of Metla [37], and the use of different forest energy fuel types (stumps, logging residues and small-sized thinning wood) were spread to the procurement ring with the help of GIS coding. A decision was made that the procurement would come from the forests available for wood supply (FAWS) in a similar way as the forest chips potential. Suitable land for wood production in this study was taken from the CORINE Land Cover 2005 classes 311,312,313 and 321 which represent closed forest land or sparsely forested land areas. Protection, conservation as well as the Natura 2000 network areas were erased from the procurement areas

Table 1. The maximum procurement distance of each plant class that was used in this study.

Plant class	Procurement area radius, km	Forest chips use, m ³
1	30	≤3000
2	60	≤10,000
3	100	≤80,000
4	150	≤175,000
5	200	>175,000

When distributing the procurement to the procurement circles and when a plant's procurement circles were overlap-ping, the procurement need for each area was summarized using the SuperRegionPolygon tool [39] (**Figure 4**).

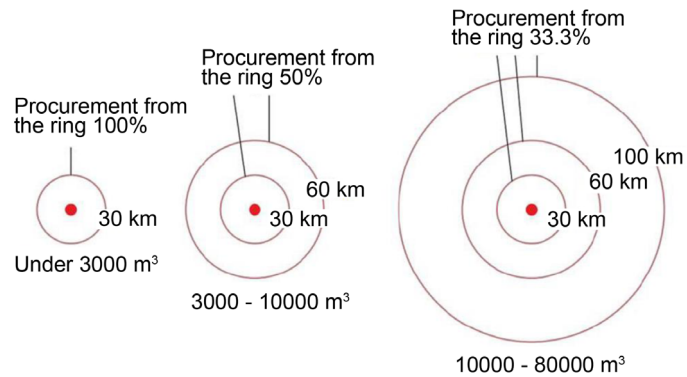
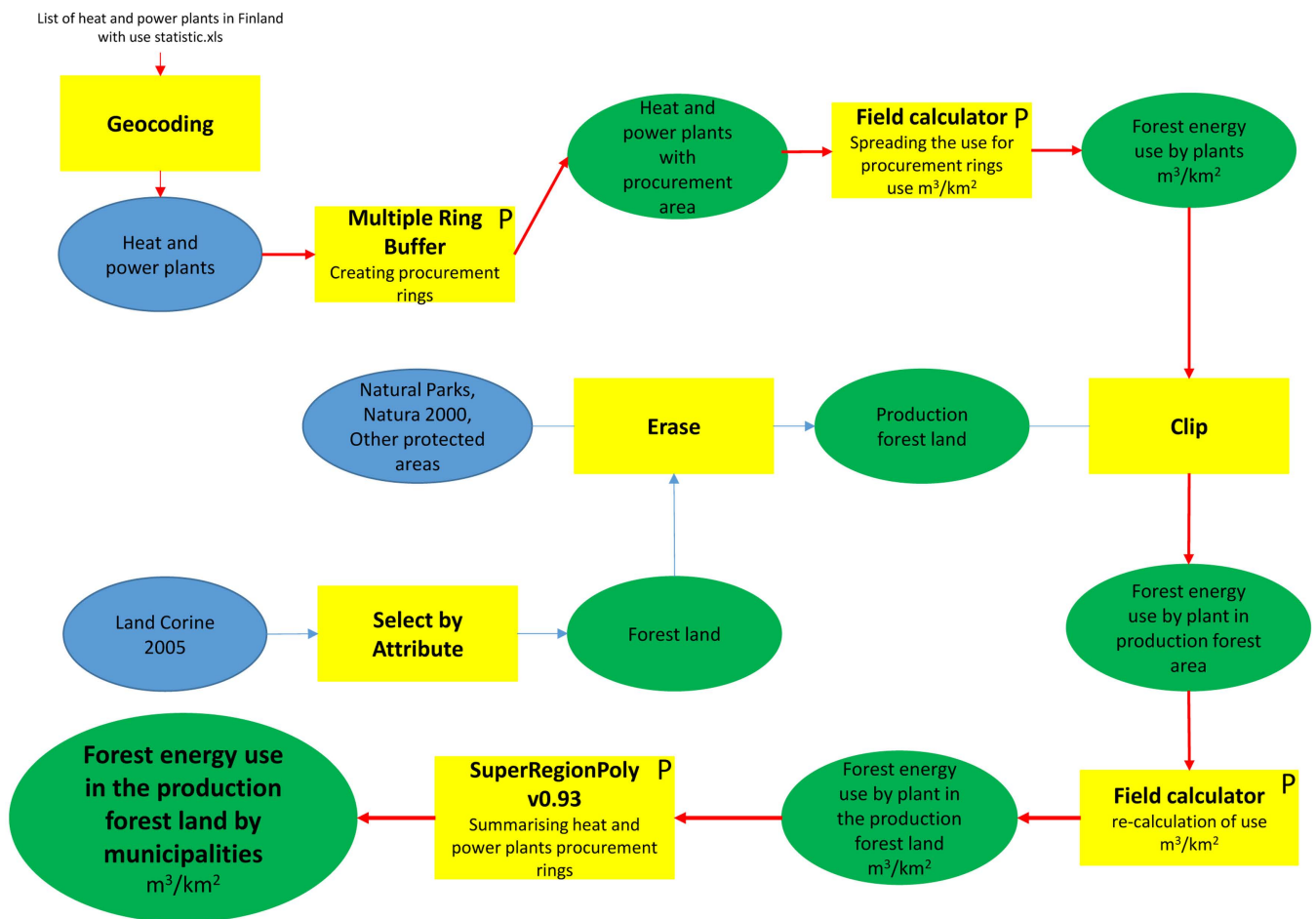


Figure 4. Process of forest chips use creation using GIS-tools.



2.3. Forest Chips Balance

The forest chips regional balance map was made by subtracting the use of heat and CHP plants' forest chips consumption from the municipality level potential data. This resulted in thematic maps showing the techno-economic potential after the assumed competition of the feedstock had been considered (so-called free potential). In polygons which had a negative balance the procurement radius was increased inside the same region border until the procurement was large enough to cover the need of negative areas. It was assumed that the plants will increase their supply area until the supply meets the demand. If the potential was not big enough inside the same region border, the next free potential was taken from the neighbour region's areas, which still had free potential left. The regions used in this study are described in **Figure 5**.

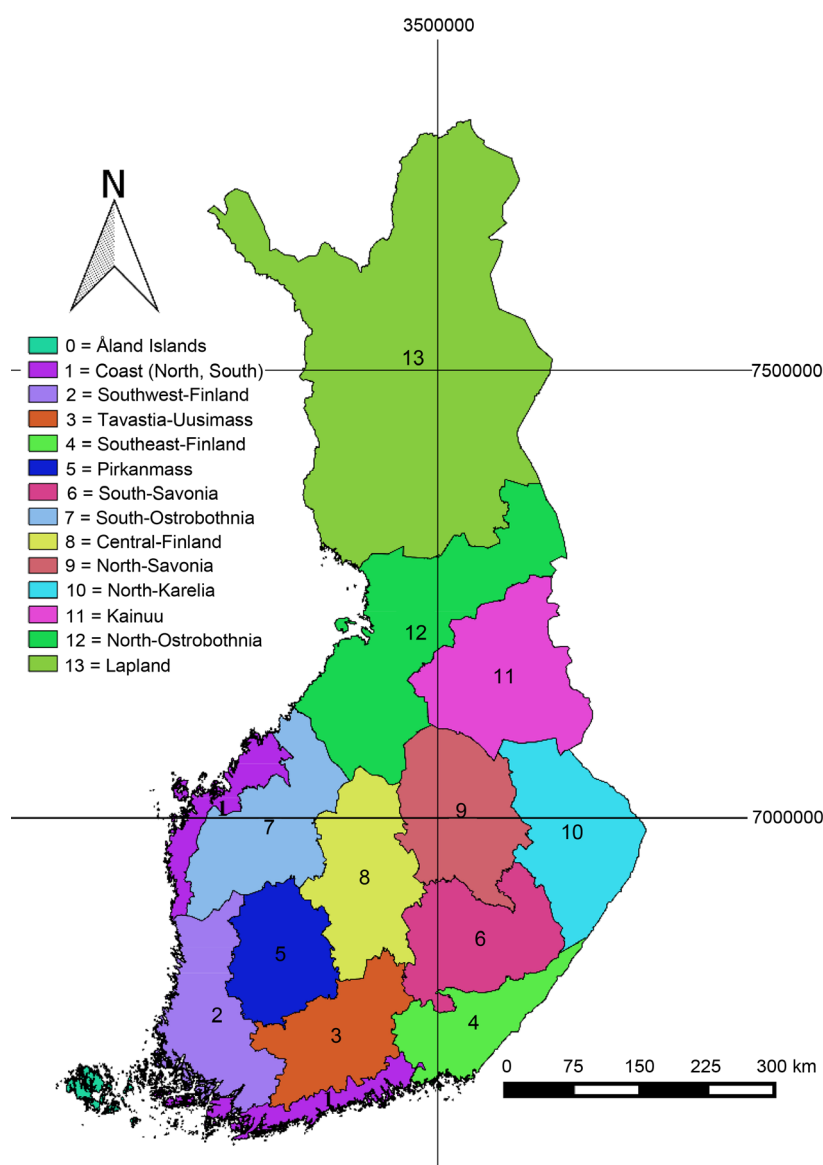


Figure 5. Forest centre's governance regions used in the study.

All the analyses were done in the GIS environment using ModelBuilder and Field Calculator scripts (Figure 6).

3. Results

3.1. Technical Potential of Forest Chips in Finland

The harvesting method affects mainly the small-sized thinning wood potential. The technical potential is 6.2 Million cubic metres annually for delimbed stemwood harvesting (Figure 7). If the harvesting is done using the wholetree method, the potential increases to 8.3 Mm³. When the harvesting is integrated with industrial roundwood harvesting, the energy wood potential is 6.6 Mm³ and moreover there is 2.5 Mm³ of industrial roundwood available at the same stands. The amount of industrial roundwood from the integrated harvesting sites varies from 15% to 88%, and the average was 54%. In delimbed stemwood and wholetree potential, the Scots pine (*Pinus sylvestris*) proportion was around 40%, birch (*Betula pendula* and *Betula pubescens*) 33%, Norway spruce (*Picea abies*) 20% and the rest was comprised of other deciduous tree species (Figure 7). When harvesting small-sized thinning wood the integrated method was used together with industrial wood harvesting and the proportion of Scots pine was a little bit less than one-third, birch around 40%, Norway spruce around 20% and the rest consisted of other species.

By 2020 the total consumption of forest chips would be 13.5 Mm³, of which domestic forest chips use would equal 12.9 Mm³.

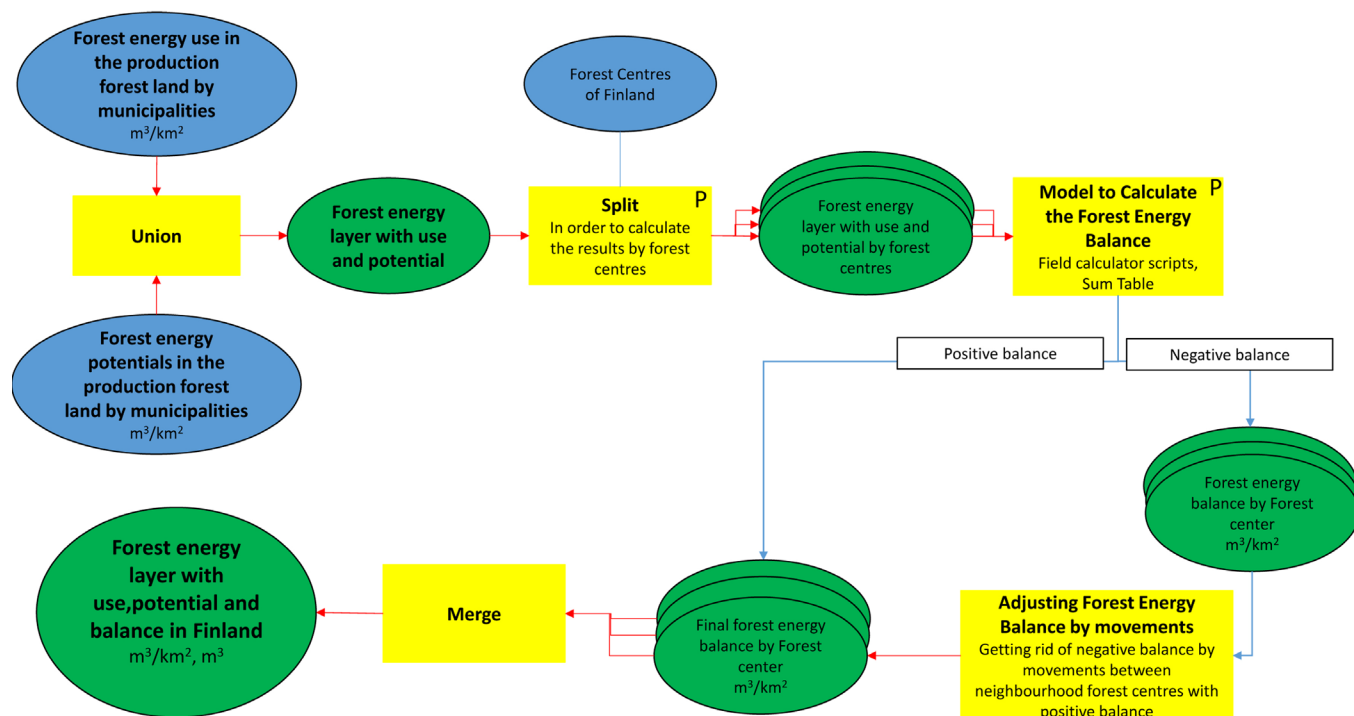


Figure 6. Forest chips balance calculation using GIS tools. The forest chips balance model and adjustments were based on the Model Builder functionalities.

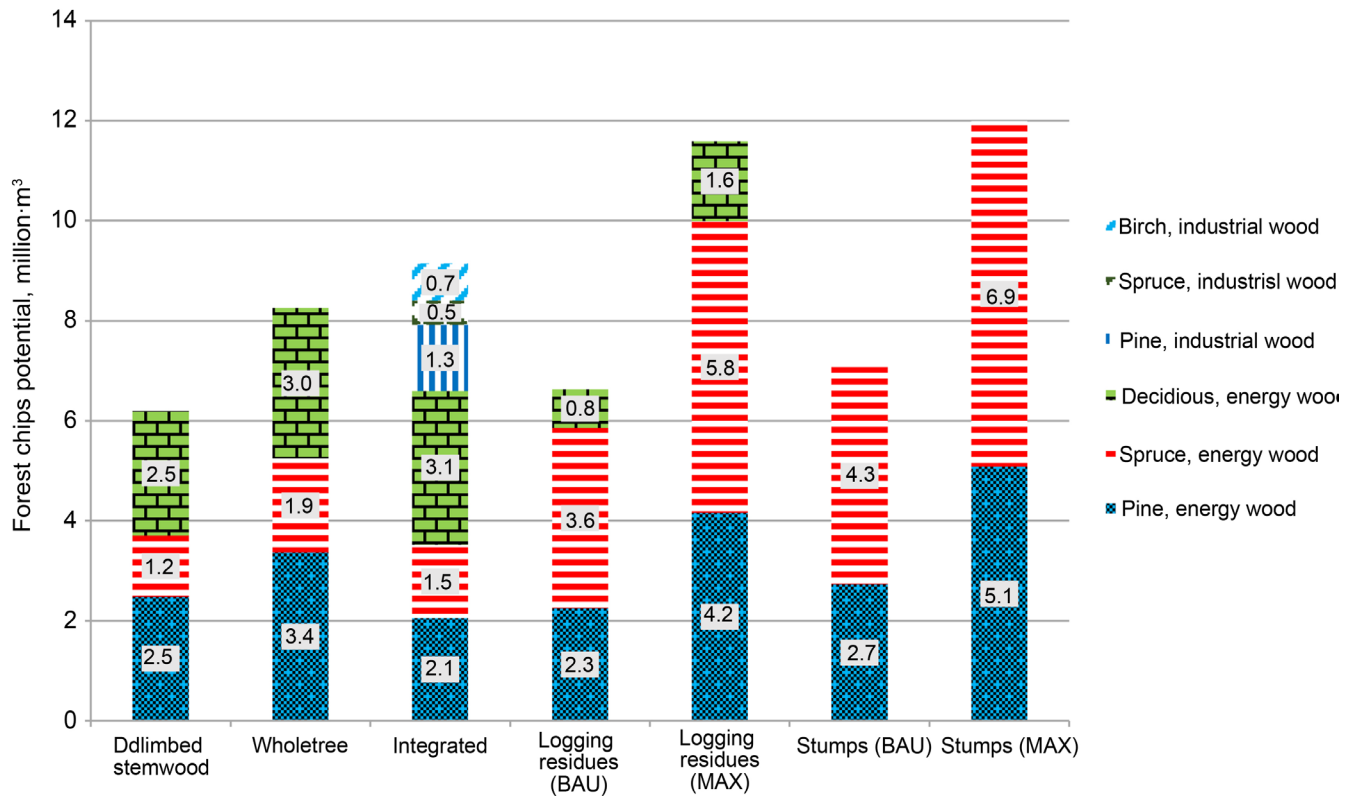


Figure 7. Potentials of forest chips by different energy sources and assortments (solid cubic metres).

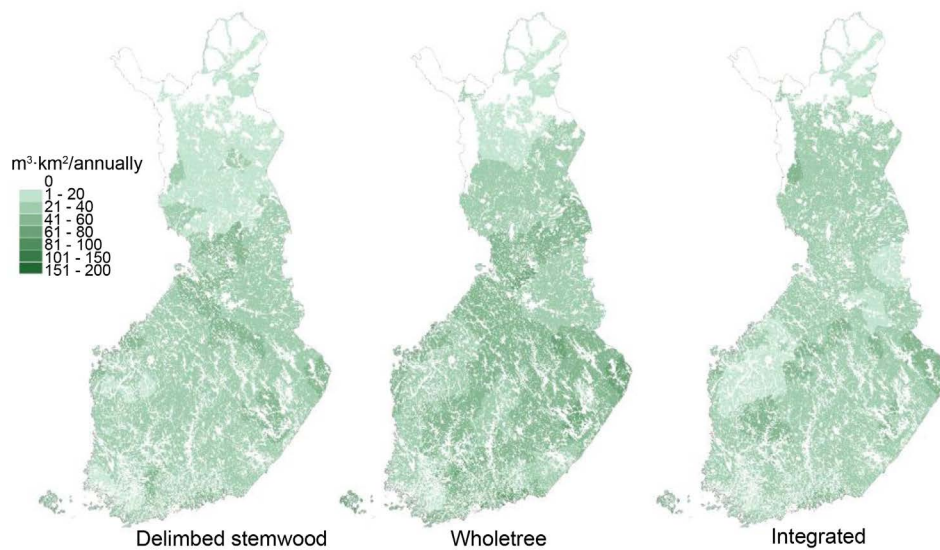
The technical potential of logging residues would be 6.6 Mm³ if the industrial wood accumulation in different tree species and final cutting areas would stay at the average level of 2008-2012 (BAU). The corresponding potential in the same scenario for the stumps was 7.1 Mm³. If the cutting level rose to the maximum sustainable level, the logging residues potential would be 11.6 Mm³ and for stumps 12.0 Mm³ (MAX). In logging residues potential, half consists of Norway spruce, one-third Scots pine and the rest deciduous tree species. The high amount of stump potential can be explained due to it also including Scots pine stumps, which are not normally harvested in Finland. The amount of Scots pine stumps in total stump proportion is around 40%, and the rest is Norway spruce stumps.

Regionally, the largest small-sized thinning wood potential can be found from the Lapland and Northern Ostrobothnia regions which are also the largest regions in Finland in terms of land area (Table 2). The largest potential, when comparing the potential per wood production area, can be found in the Åland Islands, North Savonia and Northern Ostrobothnia, if the harvesting method is delimbed stemwood or whole-tree. The corresponding areas, when the harvesting method is integrated with industrial roundwood harvesting, are the Åland Islands, Pirkanmaa and North Karelia (Figure 8).

The greatest potential of logging residues and stumps can be found from the Tavastia-Uusimaa, South Savonia, Central Finland and North Savonia regions if the cutting level follows a business as usual scenario. When the comparison is made by looking

Table 2. Potentials of forest chips, 1000 solid m³.

Region	<i>Delimbed stemwood</i>	<i>Wholetree</i>	<i>Integrated</i>	<i>Logging residues (BAU)</i>	<i>Logging residues (MAX)</i>	<i>Stumps (BAU)</i>	<i>Stumps (MAX)</i>
Åland Islands	37	50	39	28	49	32	53
Coast (south)	141	186	138	132	348	149	346
Coast (North)	181	238	166	182	277	189	291
Southwest-Finland	217	297	287	422	794	501	877
Tavastia-Uusimaa	342	471	308	627	945	726	1026
Southeast-Finland	230	315	253	491	720	545	770
Pirkanmaa	288	398	391	393	789	444	855
South-Savonia	512	684	437	701	1042	742	1069
South-Ostrobothnia	306	416	238	368	652	393	682
Central Finland	468	624	543	637	1008	695	1087
North-Savonia	512	699	471	615	1067	637	1143
North Karelia	567	752	612	508	942	515	975
Kainuu	469	631	384	447	814	464	800
North-Ostrobothnia	1050	1378	815	584	1105	529	1030
Lapland	917	1180	1571	490	1031	505	993
Total	6237	8320	6653	6628	11,584	7067	11,996

**Figure 8.** Small-sized thinning wood harvesting potentials by different harvesting options.

at the potential per wood production area, the biggest potential can be found from the Tavastia-Uusimaa, Southeast Finland and South Savonia regions (**Figure 9**). If the cutting level would be closer to the maximum sustainable level, also Northern Ostrobothnia and Lapland would have high technical potentials. Also in this scenario, when comparing the potential per wood production land area, the biggest potential can be

found then from the Tavastia-Uusimaa, South Coast and Southeast Finland regions (Figure 10).

3.2. The Use of Forest Chips in the Year 2020

Forest chips use was estimated to increase most from 2012 to 2020 in South Coast, Southwest Finland, Central Finland, Pirkanmaa and in Northern Ostrobothnia (Figure 11), if the coal and natural gas can be replaced with the help of new big investments.

3.3. Forest Chips Balance

In the year 2012, the use of small-sized thinning wood compared to the potential was highest on the Coast, Southwest-Finland, Tavastia-Uusimaa, Pirkanmaa, and South-Ostrobothnia (Table 3, Figures 12-14). Logging residue and stump harvesting potentials were greater than the use estimations in both maximum and business as usual scenarios with only some exceptions (Table 3, Figures 15-18).

According to model predictions, by the year 2020 the use of small-sized thinning wood will increase leading to a situation where the zero potential area will be expanding. This means there are more areas where the estimated use is higher than the potential, and there is no free potential left. The spatial map shows that the zero potential area is spreading from South Finland also to North Finland (Table 4, Table 5 and Figures 12-14). By the year 2020, the only remaining free potential would be in Lapland,

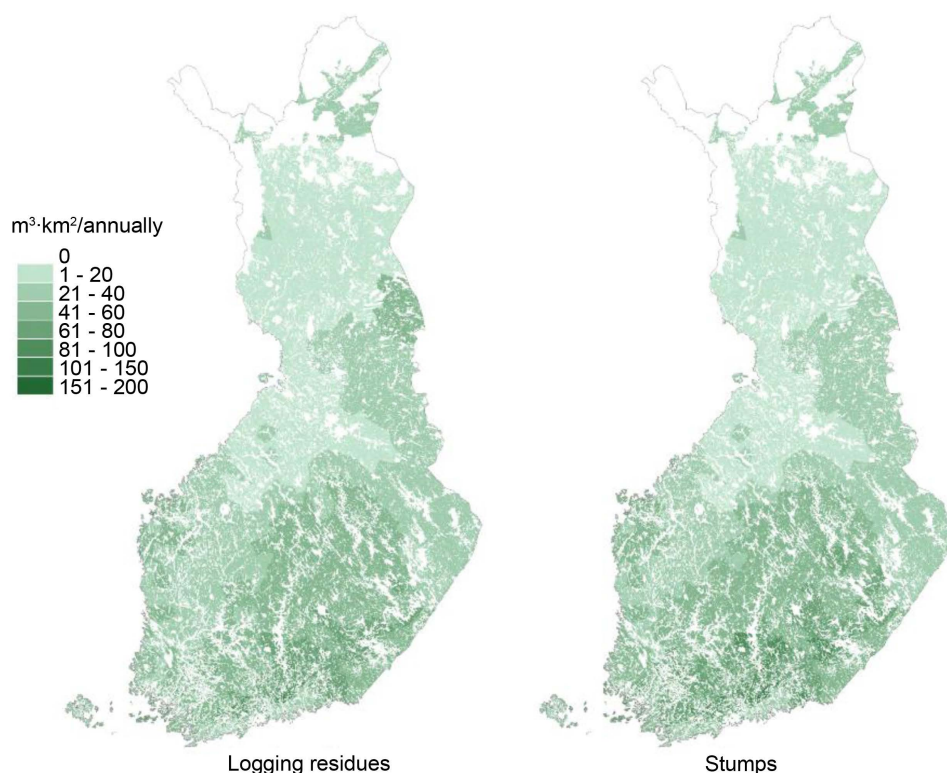


Figure 9. Potentials of logging residues and stumps when the cutting level follows 2008-2012 statistics (BAU).

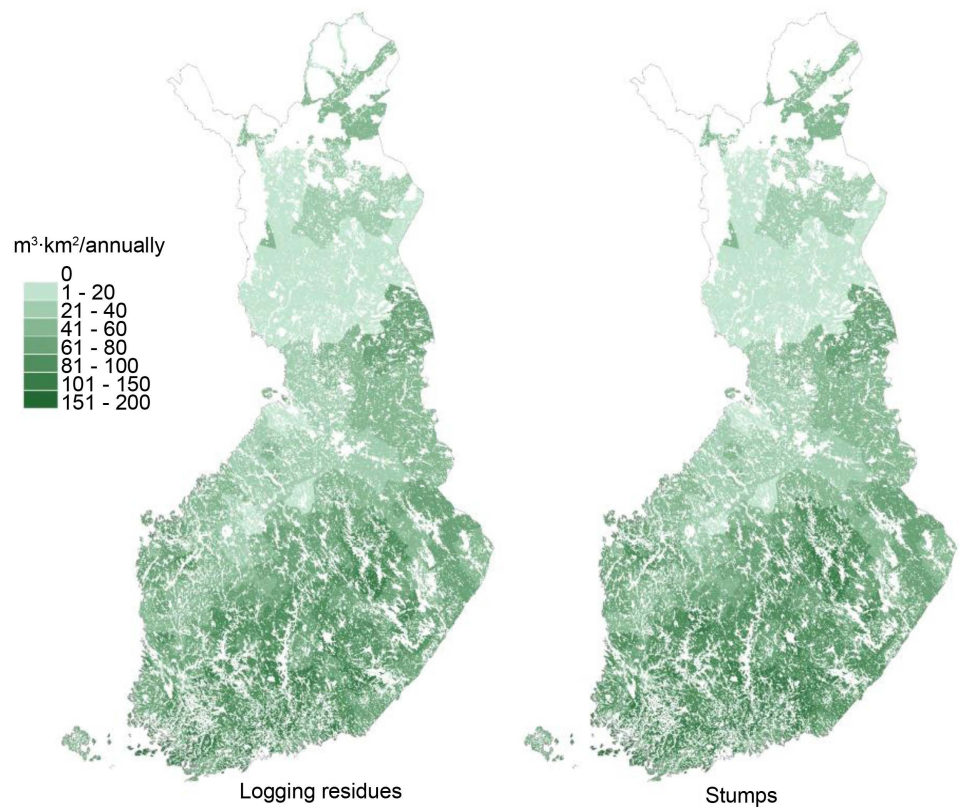


Figure 10. Potentials of logging residues and stumps when the cutting level is the maximum sustainable economic level (MAX).

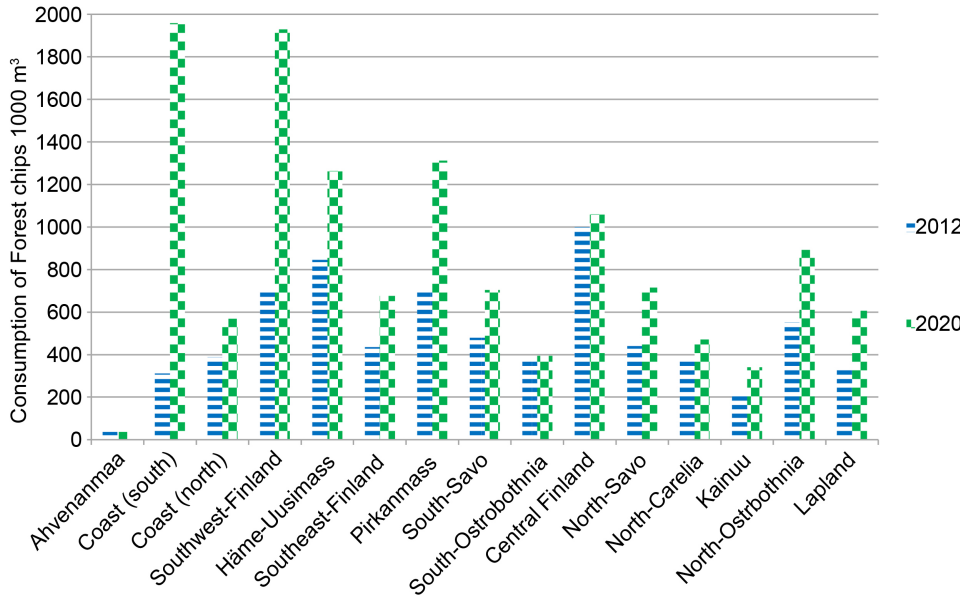


Figure 11. The statistical use of forest chips in 2012 and the estimated use in the year 2020.

if the harvesting is done by stem wood or integrated harvesting.
The logging residues zero potential area is predicted to spread from Southwest

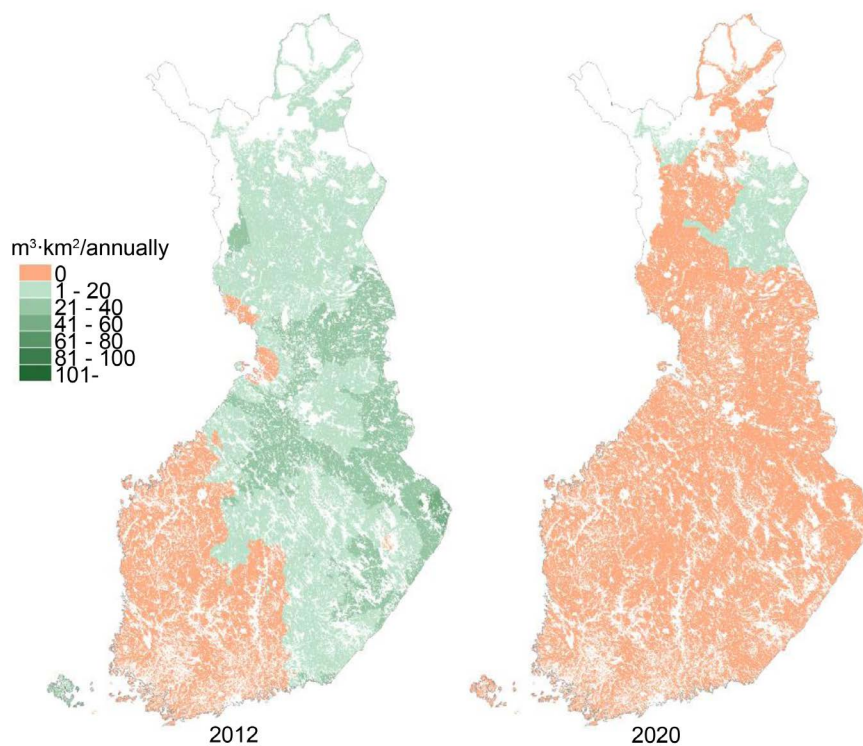


Figure 12. Small-sized thinning wood balance 2012 and 2020 when the harvesting method is delimbed stemwood.

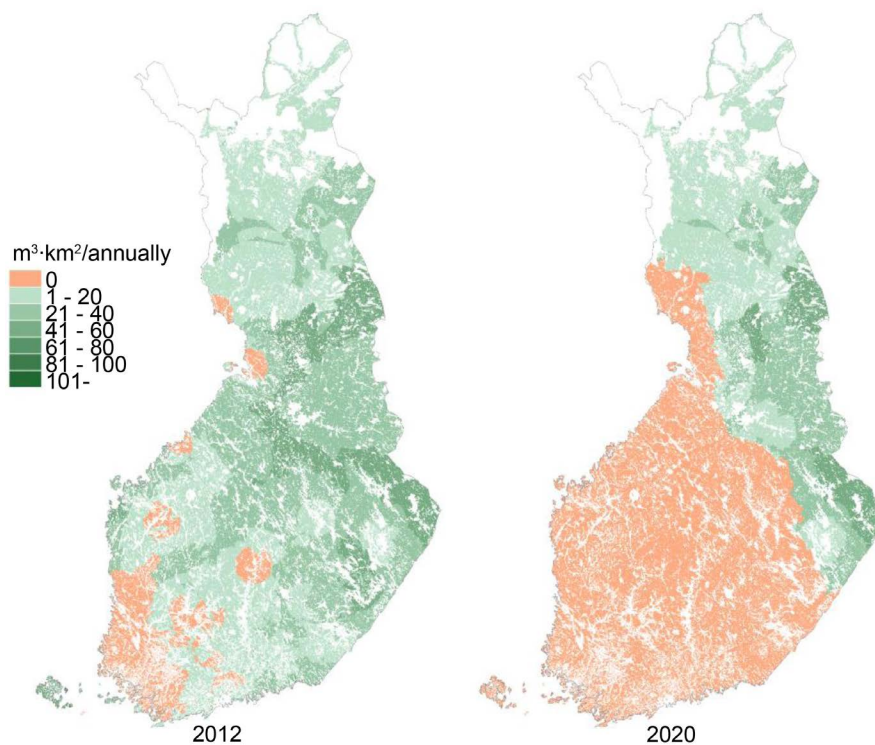


Figure 13. Small-sized thinning wood balance 2012 and 2020 when the harvesting method is wholetree.

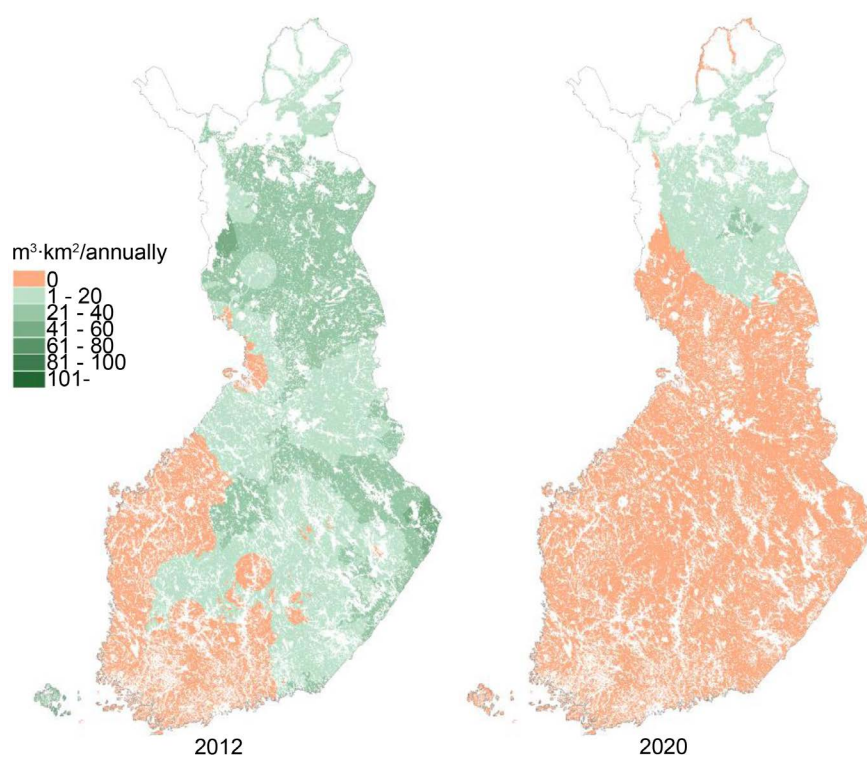


Figure 14. Small-sized thinning wood balance 2012 and 2020 when the harvesting method is integrated.

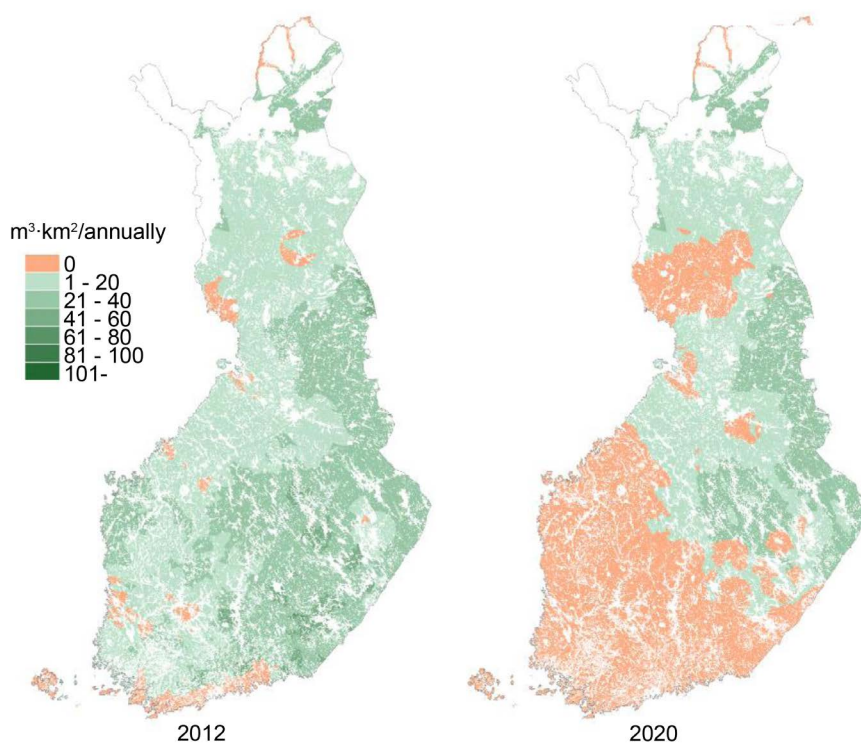


Figure 15. Logging residues balance 2012 and 2020 when the cutting level follows the 2008-2012 average statistic (BAU).

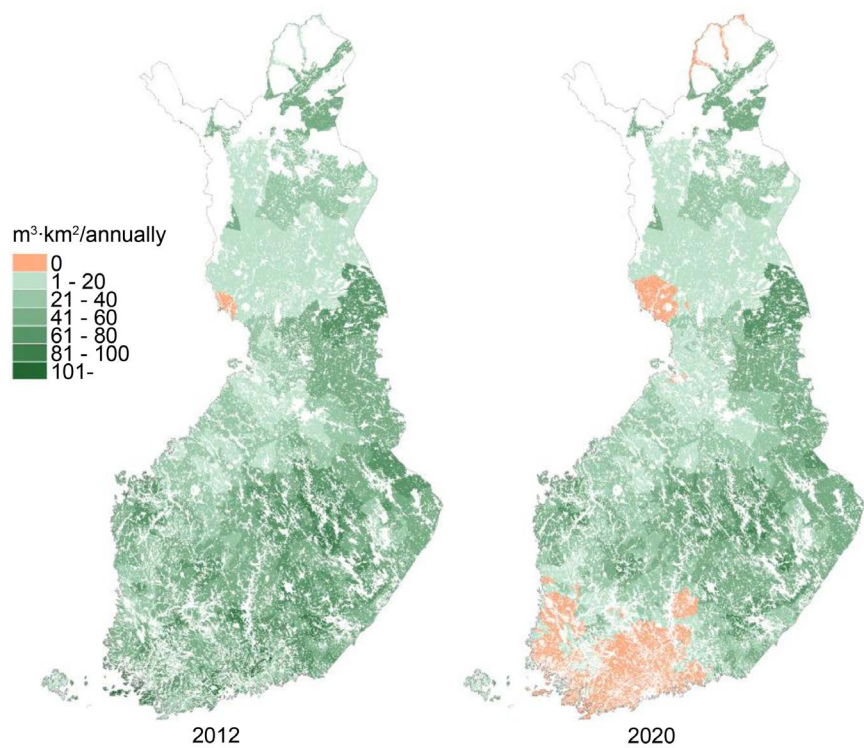


Figure 16. Logging residues balance 2012 and 2020 when the cutting level is the maximum sustainable economic level (MAX).

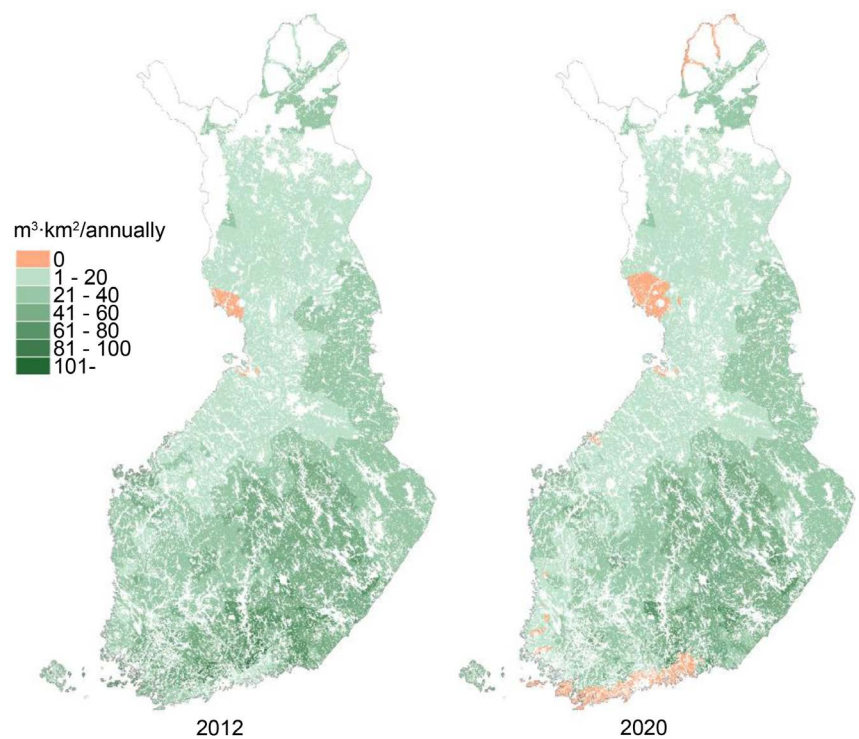


Figure 17. Stumps balance 2012 and 2020 when the cutting level follows the 2008-2012 average statistic (BAU).

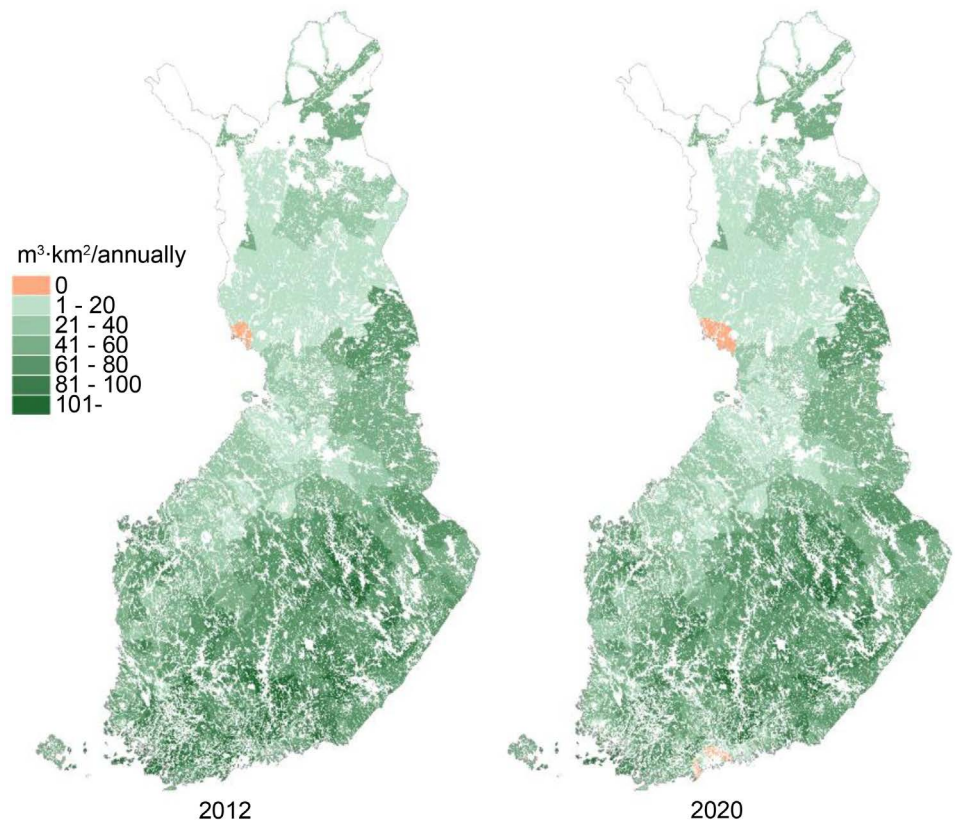


Figure 18. Stumps balance 2012 and 2020 when the cutting level is the maximum sustainable economic level (MAX).

Table 3. Potentials of forest chips, 1000 solid m³.

Region	<i>Delimbed stemwood</i>	<i>Wholetree</i>	<i>Integrated</i>	<i>Logging residues (BAU)</i>	<i>Logging residues (MAX)</i>	<i>Stumps (BAU)</i>	<i>Stumps (MAX)</i>
Åland Islands	24	36	26	2	21	28	47
Coast (south)	0	138	0	3	201	111	308
Coast (North)	0	44	0	116	225	155	270
Southwest-Finland	0	0	0	99	469	352	728
Tavastia-Uusimaa	0	105	0	247	599	606	905
Southeast-Finland	87	172	111	277	506	459	684
Pirkanmaa	0	116	58	133	521	329	731
South-Savonia	221	393	146	437	777	656	982
South-Ostrobothnia	7	135	0	185	451	280	551
Central Finland	123	278	197	363	743	565	966
North-Savonia	267	455	227	439	891	580	1085
North Karelia	389	573	433	362	797	476	935
Kainuu	374	537	289	376	743	425	761
North-Ostrobothnia	670	997	436	463	987	467	971
Lapland	648	912	1303	422	963	487	974
Total	2809	4891	3226	3924	8893	5973	10,898

Table 4. Potentials of forest chips, 1000 solid m³.

Region	<i>Delimbed stemwood</i>	<i>Wholetree</i>	<i>Integrated</i>	<i>Logging residues (BAU)</i>	<i>Logging residues (MAX)</i>	<i>Stumps (BAU)</i>	<i>Stumps (MAX)</i>
Åland Islands	22	34	24	0	17	26	45
Coast (south)	0	0	0	0	178	102	299
Coast (North)	0	15	0	91	199	133	248
Southwest-Finland	0	0	0	1	369	323	699
Tavastia-Uusimaa	0	0	0	134	492	581	881
Southeast-Finland	0	131	0	234	463	441	666
Pirkanmaa	0	0	0	56	447	314	716
South-Savonia	0	316	0	387	727	650	976
South-Ostrobothnia	0	0	0	143	409	255	526
Central Finland	0	126	0	305	685	554	955
North-Savonia	66	383	87	380	831	576	1081
North Karelia	372	563	415	346	781	452	912
Kainuu	370	552	277	343	710	419	755
North-Ostrobothnia	272	826	50	404	928	450	955
Lapland	607	882	1259	377	918	472	959
Total	1710	3829	2112	3201	8154	5747	10,673

Table 5. The forest chips balance in the year 2020. The table shows the balance in each forest chips fuel source and calculation method (1000 m³).

Region	<i>Delimbed stemwood</i>	<i>Wholetree</i>	<i>Integrated</i>	<i>Logging residues (BAU)</i>	<i>Logging residues (MAX)</i>	<i>Stumps (BAU)</i>	<i>Stumps (MAX)</i>
Åland Islands	0	0	0	0	10	23	42
Coast (south)	0	0	0	0	3	3	182
Coast (North)	0	0	0	0	228	123	239
Southwest-Finland	0	0	0	0	46	179	555
Tavastia-Uusimaa	0	0	0	0	19	402	718
Southeast-Finland	0	0	0	0	339	404	630
Pirkanmaa	0	0	0	0	303	254	656
South-Savonia	0	0	0	30	659	632	959
South-Ostrobothnia	0	0	0	0	426	246	517
Central Finland	0	0	0	31	662	533	934
North-Savonia	0	0	0	346	798	566	1072
North Karelia	0	527	0	319	754	447	907
Kainuu	0	467	0	336	703	415	751
North-Ostrobothnia	0	451	0	401	926	446	951
Lapland	46	686	466	343	884	465	953
Total	46	2130	466	1805	6759	5138	10,064

Finland towards Central Finland and from the Kemi-Tornio area towards East Lapland approaching the year 2020 with higher forest chips use estimations (**Table 4**, **Table 5** and **Figure 15** and **Figure 16**). In the case of stumps, the only areas where forest chips consumption is greater than the potential can be found from the Kemi-Tornio area in 2015, but also from the South Coast in the year 2020 (**Figure 17** and **Figure 18**).

If all fragments are summarized and included in the same balance calculation, the situation is not as bad as if only one fragment is observed. In the year 2012, there is free potential nearly all over the country. If the cutting will remain at the same level as in 2008-2012 and if forest chips use will increase as we estimated in 2015 and 2020, there is no free potential left in the South Coast and Kemi-Tornio areas (**Figure 19**). If the

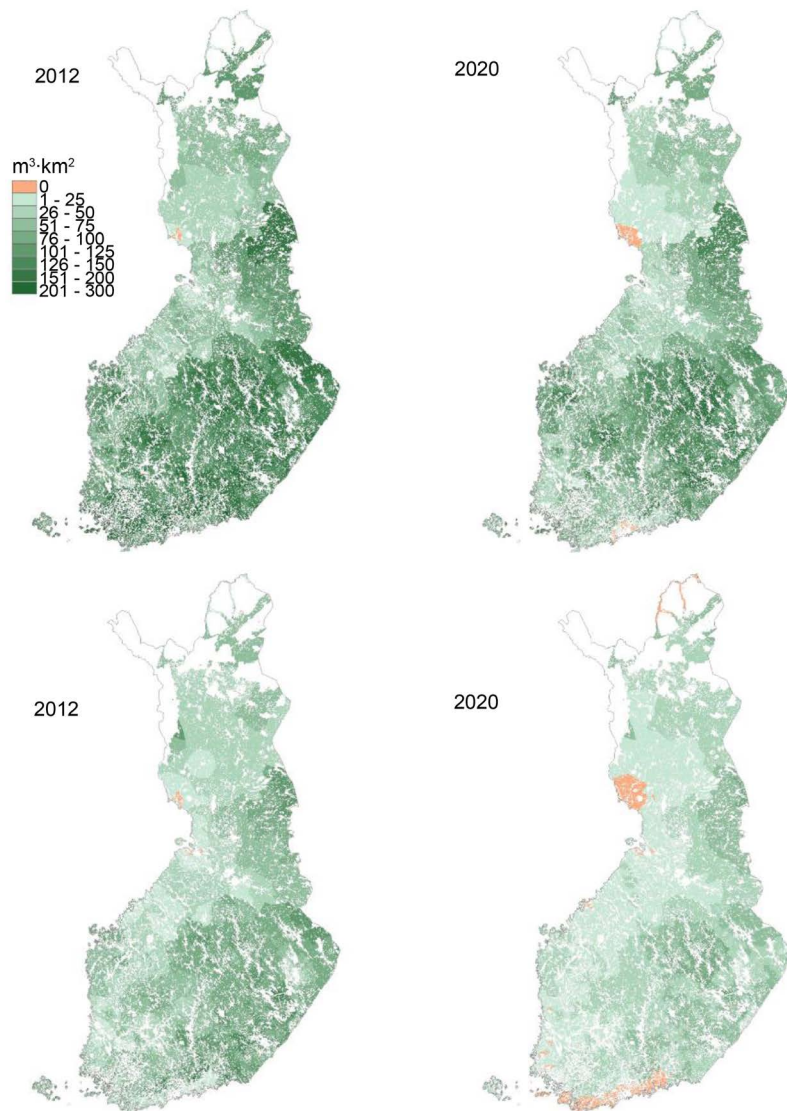


Figure 19. Forest chips balance 2012 and 2020 when all forest chips assortments are summarized. The two maps above are from scenarios where the cutting level would be the maximum sustainable level (MAX). The two maps below are from scenarios when the cutting level would be same as the current level (BAU).

cutting level would be higher in the future, there would be much more forest chips potential throughout Finland and zero potential areas could be found only in some small areas of the South Coast and Kemi-Tornio area.

4. Discussion

The new GIS-based method for forest chips calculation worked well at the national level but also for regional, municipality and local levels. Earlier studies have not been able to create maps with as accurate resolution in Finland (reference) as we reached with this method. In our study, the resolution was 1 ha, which was the limitation coming from the lowest resolution data, natural parks and protection areas. Also, the computing power of a normal PC cannot handle a more accurate calculation without changing the data first to the raster format, which has the limitation of data storage when the resolution is increases and similarly depends on the lowest-resolution data. With the help of created layers, further analysis concerning logistics or supply chains or optimal locations of new or planned heat and CHP plants are possible. The results can also be used in many kinds of procurement analysis and decision making of policy related to renewable energy and especially wood energy. The study can be repeated in other regions or countries but is dependent on the source data and some small adjustments to the process models might be needed ([Figure 1](#), [Figure 4](#) and [Figure 6](#)). This study aimed at the forest chips balance calculation, but by changing the source data it could be used for industrial wood supply and demand balance mapping as well as similar analyses in other sectors.

In this study, the estimation of procurement areas, transportation distances and procurement models are rough assumptions based on the survey. There is no public data available for actual procurement areas or the market shares of each forest energy fraction. This could be studied in future research projects.

Furthermore, there were only two scenarios for the potentials and two for the consumption. While these represent the likely extremes in the future, more scenarios could be added in the following studies to describe alternative futures. Moreover, a sensitivity analysis of the estimation parametres should be carried out.

When analysing the results and comparing the potential to the current use, the biggest free potential is in stumps. To increase the use of stumps, the logistics of stumps need to be improved as well as the quality management throughout the supply chain [\[40\]](#) [\[41\]](#). The potential calculation did not take into account the new forest law that was implemented in 2014 which allows uneven-aged treatment in forest management. In our study, we assumed that the cuttings would be similar to earlier years. Also, this study did not include the forest chips used by small households. At the whole country level in the year 2012, forest chips use equalled 7.6 Mm³ and 0.7 Mm³ of forest chips, mainly from thinning wood, were used in farms and household heating [\[4\]](#). In the future, the use of forest chips will increase in small-sized heating enterprises that typically have boilers in the size range of 100 kW to 1.5 MW and in some large power plants that will require renovation in the near future. The main user group will still be the large

Combined Heat and Power Plants (CHP plants) that operate for the industrial and central heating network purposes. These plants' proportions of the total consumption of forest chips equal about 70%.

Forest chips balance development seems to be logical relating to time as the use is increasing most in South Finland assuming the target in 2020 will be met. As the biggest increase potential in consumption will be in replacing fossil fuels in large-scale plants located mainly on the coast of Finland, the zero-potential region spreads from South-West Finland towards East and North. The zero potential areas in Lapland are mainly caused because of the small harvesting potential of forest chips, not because of the high demand or use. However, the development in consumption of forest chips in recent years suggests that it will be difficult to reach the 2020 target. The consumption peaked in 2013, but has been declining in 2014 and 2015. In 2015 the use of forest chips was 7.3 Mm³ in plants and 0.7 Mm³ in small-scale housing [42]. If the estimated use is not achieved, it means that there will be a lot more free potential left than our spatial maps and calculations showed. The free potential does not automatically mean availability, which also depends on the forest owners' willingness to sell the wood. Also, the company that owns the right for the regeneration cutting can own the right for the logging residues and stumps, and it could be that the company may not be interested in making use of the potential of the forest chips. The forest owners' willingness to sell the wood has been studied, but because the business environment has changed a lot since that time, it was not possible to include that part in the calculation. The study results vary a lot but the trend for the forest owners' willingness to sell the energy wood is positive [43] [44] [45]. The real availability is anyway less than the free potential, which can be seen in our results. On the other hand, this study concentrates on showing the regions where use could be still increased or where the free potential is greater than the use. In the real situation of course, all the forest chips are under the competition of plants that use it, but it is complicated to model. In this study, this is taken into account by defining the procurement models for each plant size class.

As forest chips use increases, the wood that fulfils the size and quality requirements for industrial wood (mainly pulp wood), might end up in the combustion furnace more often, especially if the industrial plant is located far away from the stand, or there is no demand for that wood because of the market situation or if the energy industry is able to pay a better price than the forest industry. This is the reason why in the real life situation the bigger wood sizes are used in the heat and CHP plants. This factor is responsible for underestimation of the small-sized thinning wood free potential in our results, as larger-sized thinning wood is not included in our potential but is then included in the forest chips use estimation. This statistic of used forest chips would need to be improved in the future, to do a more detailed analysis of the small-sized thinning wood balance.

There have been some signs that the consumption of industrial roundwood (mainly pulp) will increase significantly in Finland [46]. On the other hand, when the industrial use of wood increases, also the supply of solid by-products increase which means a

higher amount of bark, and saw dust to be possibly used in heat and CHP plants, which means that the demand for forest chips would be lower. The amount of imported wood between years 2010–2013 was on average 109,000 m³ of firewood (**Figure 20**) [47] [48]. In this study, the amount of imported forest chips was assumed to stay at a relatively similar level as in the year 2012. Because the amount of imported wood could vary significantly in future, a study including some import scenarios would be useful.

5. Conclusions

This study showed that the forest chips' target for 2020 could be achieved. However, this requires:

- 1) Forest chips' use in new investments, especially in South and coastal Finland.
- 2) Power and CHP plants that are using coal, will replace their raw material with forest chips.
- 3) Condensing that power plants are competitive using forest chips as their raw material.

At the moment the biggest threat of increased use of forest chips is the low price of fossil fuels and electricity. This study supports forest energy development but also provides relevant information for the forest industry, especially how the market can be changed when Finland is trying to achieve their national forest energy target.

With the current level of industrial roundwood cuttings, there will be a lack of forest chips in some regions of Finland, if Finland wants to achieve the forest energy target by

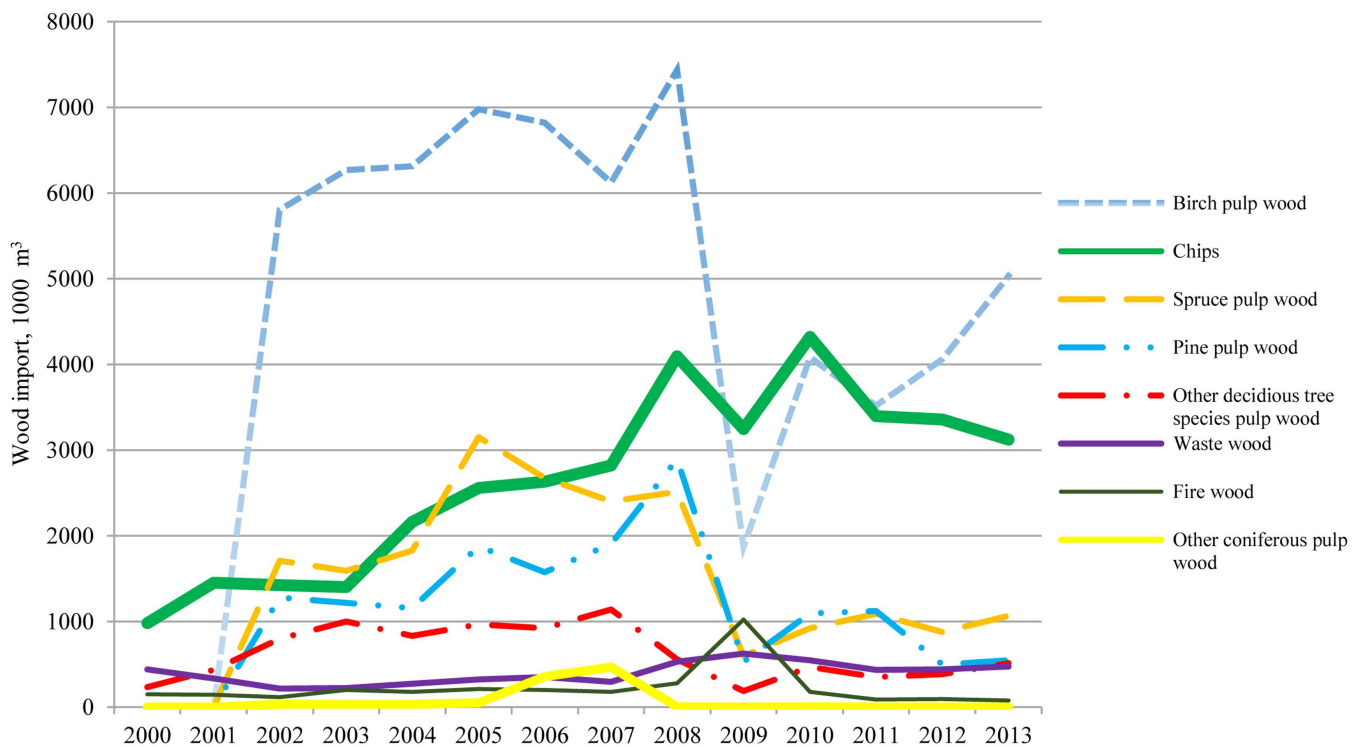


Figure 20. Forest industry wood imports in Finland, 2000–2012.

2020 using only domestic wood resources. The biggest gap between the forecasted use and estimated potential can be found from the southern coast of Finland and the Kemi-Tornio area. Before the year 2012, the greatest increase in the use of forest chips was still in small-sized thinning wood, but in the year 2020 there will be a lack of small-sized thinning wood when the use is increased after the investments in the plants using forest chips are realized. After 2020, the biggest free potential of forest chips is in regeneration cutting logging residues and stumps. On the other hand, logging residues will be in full use South-Finland, if the cutting level remains at the actual level of 2008-2012.

The biggest free potential of forest chips can be found in Central Finland, Eastern Finland and Kainuu. The biggest increase in the use of forest chips is located on the coast of Finland, which will lead to the situation where the transportation distances are going to be longer. Because of these reasons, there is a need to reduce the cost of long-distance transportation and research the possibilities and benefits of round-trip transportation. There is great potential and possibilities to increase the use of stumps if the harvesting costs can be reduced and if the quality of forest chips from stumps can be improved. In the renewable energy target of Finland, the importance of the forest energy is significant. When the use of forest chips increases, the challenges in forest chips' procurement will grow. However, there are several ways to increase the use of forest energy. One option is to increase timber harvesting which would increase the potential coming from the logging residues and stumps, but it would also increase the wood energy coming from the forest industries' by-products. Even though this study focuses on forest chips, wood energy coming from the forest industry is a renewable energy source as the energy is produced by using domestic forest chips' resources. It is also possible to broaden the forest chips' raw material sources. In this study, the small-sized thinning wood potential did not include the small-sized pulp wood harvesting sites; some of them are used for forest chips' purposes already now. This kind of wood combustion is sensible when the forest industry use points are located far away, demand is low and the quality of wood is weak for industrial purposes. On the coast of Finland, it is also possible to import forest chips using sea transportation, but this is not recommended if Finland wants to keep a positive trade balance, keep the revenues high for forest owners, increase employment and continue the sustainability plan. Domestic forest chips can also be transported using waterways or railways. Lastly, the forest chips' increase depends on political decisions that must ensure that the forest chips can be comparable to fossil fuels in heat and CHP plants.

References

- [1] Valtioneuvosto (2008) Pitkän aikavälin ilmasto-ja energiastrategia [Long-Term Climate and Energy Strategy]. Valtioneuvoston selonteko Eduskunnalle 6. Päivänä marraskuuta 2008. (In Finnish) https://www.eduskunta.fi/FI/vaski/Selonteko/Documents/vns_6+2008.pdf
- [2] Työ-ja elinkeinoministeriö (2010) Suomen kansallinen toimintasuunnitelma uusiutuvista lähteistä peräisin olevan energian edistämisestä direktiivin 2009/28/EY mukaisesti [Finland's National Action Plan for Development of Renewables According to the Directive

- 2009/28/EY], Energiaosasto. (In Finnish)
http://www.buildup.eu/sites/default/files/content/national_renewable_energy_action_plan_finland_fi.pdf
- [3] Työ- ja elinkeinoministeriö (2013) Kansallinen energia- ja ilmastostrategia, taustaraportti [National Energy and Climate Strategy, Background Report]. Eri ministeriöiden (TEM, YM, MMM, LVM, VM, UM, OKM) yhteinen viranomaisyhdysverkko. (In Finnish)
https://www.eduskunta.fi/FI/vaski/Selonteko/Documents/vns_2+2013.pdf
 - [4] Ylitalo, E. (2013) Metsätilastollinen vuosikirja 2013 [Finnish Statistical Yearbook of Forestry 2013], SVT Maa-, metsä- ja kalatalous. Metsäntutkimuslaitos, Vantaa, 273-294.
 - [5] Suomen virallinen tilasto (SVT): Puun energia käyttö 2015 [Energy Wood Generation of Finland 2015]. Luonnonvarakeskus, Helsinki, Viitattu: 02.09.2016.
http://stat.luke.fi/en/wood-energy-generation-2015_en
 - [6] Hakkila, P. (2004) Wood Energy Technology Programme 1999-2003. Final Report. Technology Programme Report 5/2004.
 - [7] Anttila, P., Nivala, M., Laitila, J. and Korhonen, K.T. (2013) Metsähakkeen alueellinen korjuupotentiaali ja käyttö [Forest Energy Regional Harvesting Potential and Use]. Metlan työraportteja/Working Papers of the Finnish Forest Research Institute, 267. (In Finnish)
<http://www.metla.fi/julkaisut/workingpapers/2013/mwp267.Htm>
 - [8] Helynen, S., Flyktman, M., Asikainen, A. and Laitila, J. (2007) Metsätalouteen ja metsäteollisuuteen perustuvan energialiiketoiminnan mahdollisuudet [Potentials of Energy Business Based on Forestry and Forest Industry]. VTT Tiedotteita-Research Notes 2397. (In Finnish)
 - [9] Laitila, J., Asikainen, A., Anttila, P., Kuusinen, M. and Ilvesniemi, H. (2008) Energiapuuvarat [Wood Energy Resources]. In: Kuusinen, M. and Ilvesniemi, H., Eds., *Energiapuun korjuun ympäristövaikutukset*, Tutkimusraportti, Forestry Development Centre Tapio and Finnish Forest Research Institute, 6-12. (In Finnish)
 - [10] Ranta, T. (2005) Logging Residues from Regeneration Fellings for Biofuel Production—A GIS-Based Availability Analysis in Finland. *Biomass Bioenergy*, **28**, 171-182.
<http://dx.doi.org/10.1016/j.biombioe.2004.08.010>
 - [11] Ranta, T., Korpinen, O.-J., Jäppinen, E. and Karttunen, K. (2012) Forest Biomass Availability Analysis and Large-Scale Supply Options. *Open Journal of Forestry*, **2**, 33.
<http://dx.doi.org/10.4236/ojf.2012.21005>
 - [12] Yoshioka, T., Sakurai, R., Aruga, K., Sakai, H., Kobayashi, H. and Inoue, K. (2011) A GIS-Based Analysis on the Relationship between the Annual Available Amount and the Procurement Cost of Forest Biomass in a Mountainous Region in Japan. *Biomass Bioenergy*, **35**, 4530-4537. <http://dx.doi.org/10.1016/j.biombioe.2011.03.029>
 - [13] Noon, C.E. and Daly, M.J. (1996) Strategic Benefits of Biomass and Wasteful Fuels GIS-Based Biomass Resource Assessment with BRAVO. *Biomass Bioenergy*, **10**, 101-109.
[http://dx.doi.org/10.1016/0961-9534\(95\)00065-8](http://dx.doi.org/10.1016/0961-9534(95)00065-8)
 - [14] Sánchez-García, S., Canga, E., Tolosana, E. and Majada, J. (2015) A Spatial Analysis of Woodfuel Based on WISDOM GIS Methodology: Multiscale Approach in Northern Spain. *Applied Energy*, **144**, 193-203. <http://dx.doi.org/10.1016/j.apenergy.2015.01.099>
 - [15] Bouchard, S., Landry, M. and Gagnon, Y. (2013) Methodology for the Large Scale Assessment of the Technical Power Potential of Forest Biomass: Application to the Province of New Brunswick, Canada. *Biomass Bioenergy*, **54**, 1-17.
<http://dx.doi.org/10.1016/j.biombioe.2013.03.014>
 - [16] Rørstad, P.K., Trømborg, E., Bergseng, E. and Solberg, B. (2010) Combining GIS and Forest Modelling in Estimating Regional Supply of Harvest Residues in Norway. *Silva Fennica*, **44**,

- 435-451. <http://dx.doi.org/10.14214/sf.141>
- [17] Ilavský, J., Laitila, J., Tahvanainen, T., Tucek, J., Koreò, M., Pápaj, V., Jankovský, J. and Zíaková, M. (2008) Analysis of Biomass Resources and Logistics of Its Procurement for Co-Firing with Brown Coal in the Zvolen CHP Plant. *Zpravy Lesnického Vyzkume-Reports on Forestry Research*, **53**, 223-228.
- [18] Kinoshita, T., Inoue, K., Iwao, K., Kagemoto, H. and Yamagata, Y. (2009) A Spatial Evaluation of Forest Biomass Usage Using GIS. *Applied Energy*, **86**, 1-8.
<http://dx.doi.org/10.1016/j.apenergy.2008.03.017>
- [19] Karjalainen, T., Asikainen, A., Ilavsky, J., Zamboni, R., Hotari, K. and Röser, D. (2004) Estimation of Wood Energy Potential in Europe. Working Papers of the Finnish Forest Research Institute, 6. <http://www.metla.fi/julkaisut/workingpapers/2004/mwp006.Htm>
- [20] Asikainen, A., Liiri, H., Peltola, S., Karjalainen, T. and Laitila, J. (2008) Forest Energy Potential in Europe (EU27). Working Papers of the Finnish Forest Research Institute, Finnish Forest Research Institute, Vantaa, 69.
<http://www.metla.fi/julkaisut/workingpapers/2008/mwp069.pdf>
- [21] Verkerk, P.J., Anttila, P., Eggers, J., Lindner, M. and Asikainen, A. (2011) The Realisable Potential Supply of Woody Biomass from Forests in the European Union. *Forest Ecology and Management*, **261**, 2007-2015. <http://dx.doi.org/10.1016/j.foreco.2011.02.027>
- [22] Díaz-Yáñez, O., Mola-Yudego, B., Anttila, P., Röser, D. and Asikainen, A. (2013) Forest Chips for Energy in Europe: Current Procurement Methods and Potentials. *Renewable and Sustainable Energy Reviews*, **21**, 562-571. <http://dx.doi.org/10.1016/j.rser.2012.12.016>
- [23] Voivontas, D., Assimacopoulos, D. and Koukios, E. (2001) Assessment of Biomass Potential for Power Production: A GIS Based Method. *Biomass Bioenergy*, **20**, 101-112.
[http://dx.doi.org/10.1016/S0961-9534\(00\)00070-2](http://dx.doi.org/10.1016/S0961-9534(00)00070-2)
- [24] Thomas, A., Bond, A. and Hiscock, K. (2013) A GIS Based Assessment of Bioenergy Potential in England within Existing Energy Systems. *Biomass Bioenergy*, **55**, 107-121.
<http://dx.doi.org/10.1016/j.biombioe.2013.01.010>
- [25] Fiorese, G. and Guariso, G. (2010) A GIS-Based Approach to Evaluate Biomass Potential from Energy Crops at Regional Scale. *Environmental Modelling & Software*, **25**, 702-711.
<http://dx.doi.org/10.1016/j.envsoft.2009.11.008>
- [26] Zambelli, P., Lora, C., Spinelli, R., Tattoni, C., Vitti, A., Zatelli, P. and Ciolli, M. (2012) A GIS Decision Support System for Regional Forest Management to Assess Biomass Availability for Renewable Energy Production. *Environmental Modelling & Software*, **38**, 203-213. <http://dx.doi.org/10.1016/j.envsoft.2012.05.016>
- [27] Viana, H., Cohen, W.B., Lopes, D. and Aranha, J. (2010) Assessment of Forest Biomass for Use as Energy. GIS-Based Analysis of Geographical Availability and Locations of Wood-Fired Power Plants in Portugal. *Applied Energy*, **87**, 2551-2560.
<http://dx.doi.org/10.1016/j.apenergy.2010.02.007>
- [28] Lourinho, G. and Brito, P. (2015) Assessment of Biomass Energy Potential in a Region of Portugal (Alto Alentejo). *Energy*, **81**, 189-201.
<http://dx.doi.org/10.1016/j.energy.2014.12.021>
- [29] Hiloidhari, M., Baruah, D., Mahilary, H. and Baruah, D.C. (2012) GIS Based Assessment of Rice (*Oryza sativa*) Straw Biomass as an Alternative Fuel for Tea (*Camellia sinensis* L.) Drying in Sonitpur District of Assam, India. *Biomass Bioenergy*, **44**, 160-167.
<http://dx.doi.org/10.1016/j.biombioe.2012.05.016>
- [30] Natarajan, K., Latva-Käyrä, P., Zyadin, A. and Pelkonen, P. (2016) New Methodological Approach for Biomass Resource Assessment in India Using GIS Application and Land

- Use/Land Cover (LULC) Maps. *Renewable and Sustainable Energy Reviews*, **63**, 256-268.
<http://dx.doi.org/10.1016/j.rser.2016.05.070>
- [31] Hu, M., Huang, A. and Wen, T. (2013) GIS-Based Biomass Resource Utilization for Rice Straw Cofiring in the Taiwanese Power Market. *Energy*, **55**, 354-360.
<http://dx.doi.org/10.1016/j.energy.2013.03.013>
- [32] Höhn, J., Lehtonen, E., Rasi, S. and Rintala, J. (2014) A Geographical Information System (GIS) Based Methodology for Determination of Potential Biomasses and Sites for Biogas Plants in Southern Finland. *Applied Energy*, **113**, 1-10.
<http://dx.doi.org/10.1016/j.apenergy.2013.07.005>
- [33] Nord-Larsen, T. and Talbot, B. (2004) Assessment of Forest-Fuel Resources in Denmark: Technical and Economic Availability. *Biomass Bioenergy*, **27**, 97-109.
<http://dx.doi.org/10.1016/j.biombioe.2004.01.007>
- [34] Kinoshita, T., Ohki, T. and Yamagata, Y. (2010) Woody Biomass Supply Potential for Thermal Power Plants in Japan. *Applied Energy*, **87**, 2923-2927.
<http://dx.doi.org/10.1016/j.apenergy.2009.08.025>
- [35] Korhonen, K.T., Ihalainen, A., Viiri, H., Heikkinen, J., Henttonen, H.M., Hotanen, J., Mäkelä, H., Nevalainen, S. and Pitkänen, J. (2013) Suomen metsät 2004-2008 ja niiden kehitys 1921-2008 [Finland's Forests 2004-2008 and Development of Forests in Finland 1921-2008]. *Metsätieteen Aikakauskirja* 3/2013, 269-608. (In Finnish)
<http://www.metla.fi/aikakauskirja/full/ff13/ff133269.pdf>
- [36] Redsvén, V., Hirvelä, H., Härkönen, K., Salminen, O. and Siitonen, M. (2013) MELA 2012 Reference Manual. 2nd Edition, Finnish Forest Research Institute.
http://mela2.metla.fi/mela/julkaisut/opaat/mela2012_2nd_ed.pdf
- [37] Ylitalo, E. (2013) Puun energiakäyttö 2012 [Wood Energy Use in 2012]. *Metsätilastotiedote* 15/2013. (In Finnish)
<http://www.metla.fi/metinfo/tilasto/julkaisut/mtt/2013/puupolttoaine2012.pdf>
- [38] Kurki, P., Mutanen, A. and Anttila, P. (2012) Energiapuumarkkinat—Käytännön kokeemukset ja tilastointimahdollisuudet [Energy Wood Markets—Practical Experiences and Statistical Possibilities]. *Metlan Työraportteja/Working Papers of the Finnish Forest Research Institute*, 228. (In Finnish)
<http://www.metla.fi/julkaisut/workingpapers/2012/mwp228.htm>
- [39] Snyder, C. (2009) Washington State Dept. of Natural Resources, SuperRegionPoly_v93 [Software], Python. <http://arcscrips.esri.com/details.asp?dbid=16700>
- [40] Laitila, J., Leinonen, A., Flyktman, M., Virkkunen, M. and Asikainen, A. (2010) Metsähäkkeen hankinta- ja toimituslogistiikan haasteet ja kehittämistarpeet [Challenges and Development Needs of Forest Chips Procurement and Delivery Logistics]. *VTT Tiedotteita Research, Notes* 2564. (In Finnish)
- [41] Laitila, J. and Nuutinen, Y. (2015) Efficiency of Integrated Grinding and Screening of Stump Wood for Fuel at Roadside Landing with a Low-Speed Double-Shaft Grinder and a Star Screen. *Croatian Journal of Forest Engineering*, **36**, 19-32.
- [42] Ylitalo, E. The Consumption of Forest Chips Decreased in 2015, *Research News of Luke*.
<https://www.luke.fi/en/news/the-consumption-of-forest-chips-decreased-in-2015/>
- [43] Maidell, M., Pyykkönen, P. and Toivonen, R. (2008) Metsäenergiapotentiaalit Suomen maakunnissa [Potentials of Energy Wood in the Provinces of Finland]. *Pellervo Economic Research Institute Working Papers*, 106. (In Finnish)
- [44] Järvinen, E., Rämö, A. and Silvennoinen, H. (2006) Energiapuun tuotanto ja markkinat: Metsänomistajakysely [Forest Energy Production and Markets: Survey of Forest Owners].

Pellervon taloudellisen tutkimuslaitoksen taportteja nro 199. (In Finnish)

- [45] Mynttinen, S., Karttunen, K. and Handelberg, J. (2010) Energiapuun tarjontahalukkuus [Forest Owners' Willingness to Supply Energy Wood]. In: Karttunen, K., Föhr, J. and Ranta, T., Eds., *Energiapuuta Etelä-Savosta* [*Energy Wood from South-Savonia*], Lappeenrannan Teknillinen Yliopisto, Teknillinen tiedekunta, LUT Energia, Tutkimusraportti 7, 11-32. (In Finnish)
- [46] Härkönen, K. (2014) Puuvarojen käyttö [Use of Wood Resources]. In: Viitanen, J. and Mutanen, A., Eds., *Metsäsektorin Suhdanekatsaus 2014-2015* [*Forest Sector's Outlook 2014-2015*], 33-35. (In Finnish)
<http://www.metla.fi/julkaisut/isbn/978-951-40-2491-7/suhdanekatsaus-2014-2015.pdf>
- [47] MetINFO Database (2014) Forest Energy Use in Finland.
<http://www.metla.fi/metinfo/index-en.htm>
- [48] Peltola, A. (2014) Metsäteollisuuden ulkomaankauppa joulukuu 2013 [Foreign Trade of Forest Industry in Finland, December 2013]. Metsätilastotiedote (SVT Maa-, Metsä- ja Kalatalous) 2014 (9/2014). (In Finnish)
http://www.metla.fi/tiedotteet/metsatilastotiedotteet/2014/uk13_12.htm

Abbreviations

BAU: Business as usual scenario;
CHP: Combined Heat and Power;
CORINE: Coordination of information on the environment/CORINE program;
EU: European Union;
FAWS: The forests available for wood supply;
KD: Kernel Density;
MAX: Maximum sustainable scenario;
MELA: Forest decision support system tool generated for Finnish conditions;
Mm³: Million solid cubic meter;
NFI: National Forest Inventory;
P: Parametrised/Parameter;
TWh: Terawatt hours;
VTT: VTT Technical Research Centre of Finland Ltd.



Scientific Research Publishing

Submit or recommend next manuscript to SCIRP and we will provide best service for you:

Accepting pre-submission inquiries through Email, Facebook, LinkedIn, Twitter, etc.
A wide selection of journals (inclusive of 9 subjects, more than 200 journals)
Providing 24-hour high-quality service
User-friendly online submission system
Fair and swift peer-review system
Efficient typesetting and proofreading procedure
Display of the result of downloads and visits, as well as the number of cited articles
Maximum dissemination of your research work

Submit your manuscript at: <http://papersubmission.scirp.org/>

Or contact jgis@scirp.org

