

Familial Hypercholesterolemia in an Azorean Family: A Novel Mutation in the Low-Density Lipoprotein Receptor Gene

Rita Lourenço^{1*}, Luísa Martins¹, João Anselmo², Marina Rita Soares¹, Ana Medeiros³, Mafalda Bourbon³, Rui César², Fernanda Gomes¹

¹Department of Pediatrics, Hospital do Divino Espírito Santo de Ponta Delgada, Azores, Portugal

²Department of Endocrinology, Hospital do Divino Espírito Santo de Ponta Delgada, Azores, Portugal

³Instituto Nacional de Saúde Dr. Ricardo Jorge, Lisbon, Portugal

Email: *ritadafonsecalourenco@gmail.com

Received 24 March 2014; revised 29 May 2014; accepted 27 June 2014

Copyright © 2014 by authors and Scientific Research Publishing Inc.

This work is licensed under the Creative Commons Attribution International License (CC BY).

<http://creativecommons.org/licenses/by/4.0/>



Open Access

Abstract

Familial hypercholesterolemia (FH) is one of the most prevalent autosomal dominant inherited disorders. Mutations have been found in at least 3 genes: the low-density lipoprotein receptor (*LDLR*), apolipoprotein B (*APOB*), and proprotein convertase subtilisin/kexin type 9 (*PCSK9*). We report on an Azorean family with FH due to a novel mutation in the *LDLR* gene across three generations. The index-case was first seen at our endocrinology consultation at 12 years old, because of delayed growth and development. Laboratorial investigations revealed a complete failure of the anterior hypophysis due to a congenital malformation of the sella turcica. A total cholesterol of 313 mg/dL (90 - 190 mg/dL) and low-density lipoprotein cholesterol (LDL-C) of 262 mg/dL (<115 mg/dL) was found in routine blood tests. There was a paternal history of hypercholesterolemia, corneal arcus and myocardial infarction at an early age. Screening for mutations in *LDLR* gene was carried out. In the affected cases, an intronic heterozygous point mutation (c.818-3C > G) causing a premature termination of transcription (stop codon) was identified.

Keywords

Familial Hypercholesterolemia, LDL Receptor Gene, Pediatric Patients, Statins

*Corresponding author.

1. Introduction

Heterozygous familial hypercholesterolemia (FH) is the most common inherited form of primary hyperlipidemia, with an incidence around 1:500 newborns. The disease is still under-diagnosed in many populations, including the Portuguese [1]. The total number of FH patients in Portugal has been estimated to be around 20,000 cases [2].

FH has a co-dominant transmission and is caused by mutation of low-density lipoprotein receptor (*LDLR*) gene in most cases. The *LDLR* binds low-density lipoprotein cholesterol (LDL-C) with high affinity at the hepatic cellular membrane, and then the receptor-ligand complex is internalized and delivered to the endosomes where the LDL-C is released and metabolized. Reduced receptor function (2% - 25% in heterozygotes FH) results in elevated LDL-C levels in blood [3] [4]. There is evidence that the type of *LDLR* mutation can be the prediction of LDL-C levels and the risk of premature coronary artery disease occurring early in life [5].

Over the years, other genes associated with the FH phenotype have been identified, such as apolipoprotein B (*APOB*) and more recently proprotein convertase subtilisin/kexin type 9 (*PCSK9*) [4]. However, the clinical manifestations of familial defective ApoB are generally milder than those caused by defects in *LDLR* gene [6] [7].

In children, FH is diagnosed based on high levels of LDL-C, above the 95th percentile for sex and age together with normal levels of high density lipoprotein cholesterol (HDL-C) and triglycerides, and a family history of hypercholesterolemia and premature CD. When a pediatric patient has LDL-C exceeding 140 mg/dL, a family member(s) diagnosed with FH, and a family history of hyper LDL-C or premature cardiovascular disease (CD), extensive examination must be performed to make a definitive diagnosis [8].

Patients with FH have increased levels of LDL-C since birth, which left untreated lead to premature CD. In fact, a significant increase in the carotid intima-media thickness is already found at the age of 12-years [9] [10], reflecting the accelerated development of atherosclerosis in affected patients, which starts much earlier than in hyperlipoproteinemic patients without a genetic trait. This finding reinforces the need for an early diagnosis of FH [9] [11] [12].

The Portuguese Familial Hypercholesterolemia Study was begun at the National Institute of Health in 1999 [2]. The aim of this study was to perform an epidemiological study to determine the prevalence and distribution of FH in Portugal and to better understand the pathophysiology of coronary heart disease in the patients. The clinical criteria used for the diagnosis of FH were adapted from those of the Simon Broome Heart Research Trust. Genetic diagnosis is based on the search for mutations in three genes: *LDLR*, *APOB* and *PCSK9*.

Within the framework of this epidemiological Study, we present an Azorean family affected by a novel mutation of the *LDLR* across three generations.

2. Case Report

A 12-year-old boy was first seen at our outpatient consultation because of delayed growth and development. Laboratorial investigations revealed a complete failure of the anterior hypophysis due to a congenital malformation of the sella turcica (Figure 1).

On routine blood tests he presented hypercholesterolemia with total cholesterol of 313 mg/dL (90 - 190 mg/dL); LDL-C 262 mg/dL (<115 mg/dL); HDL-C 43 mg/dL (>40 mg/dL) and triglycerides 42 mg/dL (<150 mg/dL). He was started on hormonal replacement treatment (growth hormone, levothyroxine and hydrocortisone). Initially the high level of cholesterol was thought to be caused by central hypothyroidism. However, making the patient's thyroid hormone levels into normal status, total cholesterol remained above 300 mg/dL (90 - 190 mg/dL), raising the suspicion of FH.

There was a familial history of CD and premature death (Figure 2).

His father had a myocardial infarction at age 34-years, when cholesterol levels above 500 mg/dL (90 - 190 mg/dL) were firstly noticed. His grandfather died early from myocardial infarction. Hypercholesterolemia was present in three generations: index patient, his father and grandmother. All family members had normal Body Mass Index (BMI).

Given his personal and family history of dyslipidemia and premature coronary disease, the patient was enrolled in the Portuguese FH Study as index-case of his family. His lipid profile at the beginning of the study was: total cholesterol, 290 mg/dL (90 - 190 mg/dL); LDL-C, 237 mg/dL (<115 mg/dL); HDL-C, 26 mg/dL (>40 mg/dL); apoAI, 86 mg/dL (>160 mg/dL); apoB 189 mg/dL (<150 mg/dL); Lp(a) 8 mg/dL (<30 mg/dL); and triglycerides 82 mg/dL (<150 mg/dL).

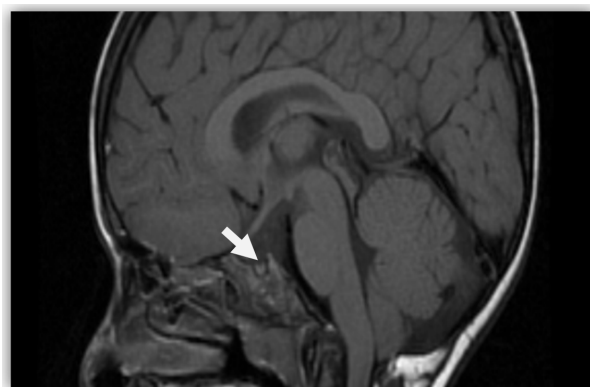


Figure 1. Brain CT scan of the patient with atrophic pituitary gland within the sellar pouch.

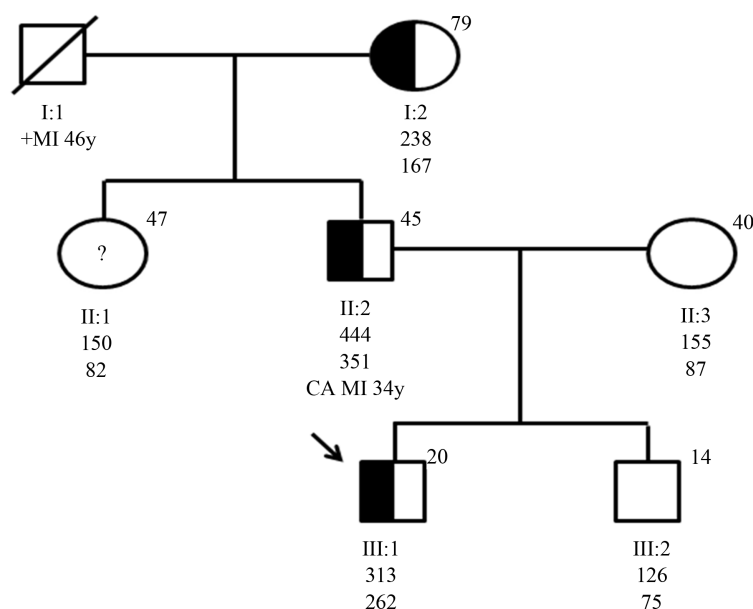


Figure 2. Genealogical tree of the family studied. The index-case is indicated by an arrow. Ages in years are shown in the upper right corner of the symbol. Total cholesterol and LDL-C values in mg/dL are shown below each symbol. Half shaped symbol correspond to family members with c.818-3C > G mutation. Open symbols represent individuals without the mutation. Open symbols with question mark represent individual not available for the study. Abbreviations, deceased; MI, myocardial infarction; CA, corneal arcus.

The genetic study showed the existence of a novel heterozygous point mutation—the Azorean-1. This mutation occurs in intron 5 of the *LDLR* gene (c.818-3C > G), causing a premature termination of transcription (stop codon). The family study was performed and it was confirmed that the mutation co-segregated in family members who are hypercholesterolemic (Figure 2).

3. Discussion

The study of familial hypercholesterolemia is extremely important because early changes of atherosclerosis have been demonstrated in the vasculature of children in the first two decades of life. On the other hand, from a socioeconomic point of view, early identification, diagnosis and appropriate treatment can significantly reduce the number of cardiovascular events and prevent premature death, which have a heavy impact on families and so-

ciety.

In children, not always the suspected diagnosis is easy, particularly when the child is followed by another disease, which may also be responsible for hypercholesterolemia, as demonstrated in our case. Hypercholesterolemia is usually the only clinical finding in children with heterozygous FH in their first decade of life.

The serum cholesterol may be raised above 250 mg in hypopituitary children, even when there is no evidence of hypothyroidism, or even when hypothyroidism is adequately treated. Moreover, it was known that growth hormone induces low-density lipoprotein clearance, so its replacement in hypopituitarism reduces plasma LDL-C by inducing LDL clearance [13].

The genetic study of relatives of affected individuals is undoubtedly the most cost-effective method of detecting new cases of FH and several countries have already begun cascade screening programs [14]–[18]. Furthermore, clinical characterization is not sufficient to distinguish between patients with genetic or environmental dyslipidemia, and so molecular diagnosis is useful in clinical practice, allowing correct identification of FH patients and their relatives [17] [19] [20]. The grandmother of our index-patient (**Figure 2**) illustrated the importance of this molecular diagnosis, as she has total cholesterol below 290 mg/dL (90 - 190 mg/dL), easily controlled with statins, expressing a less aggressive phenotype. This molecular finding reveals that many individuals are probably being under diagnosed and have an even greater risk of developing premature CD.

As there is no record of grandfather cholesterol levels, we cannot state that he also suffered of FH, so the etiology of their MI might not be related to hypercholesterolemia.

The same mutation resulted in different phenotypes, as observed in the three family generations affected (**Figure 2**). In fact the index-patient father presents a more severe disease, with high cholesterol levels and difficult therapeutic control. This difference can be attributed to splicing mutation that produces a stop codon at the signal peptide, and consequently the protein is not translated. The amount of properly processed transcripts in patients with splice mutation is variable from person to person, giving a different intrafamilial variability in the clinical expression of FH. Another hypothesis is that the father being a compound heterozygote with another mutation, not screened in the study of the most frequent genes or never described. On the other hand, selected factors (such as the elevated apolipoprotein (a) levels, low levels of HDL-C and raised triglyceride and apolipoprotein B levels) were associated with a greater risk of developing CD [21], as seen in index case father.

More than 1000 mutations have been described for the *LDLR* gene in a wide variety of populations [19]. In the last ten years, the Portuguese FH Study identified 80 different mutations in the *LDLR* gene, in 165 unrelated index patients, 34 being exclusive to the Portuguese population [22]. The mutation found in the *LDLR* gene of our family has not been previously described in the literature, and is to date exclusive to our study population, so we call it Azorean-1 mutation.

Since 1990's, researchers began to examine the potential benefit of statin therapy in FH children on the premise that it prevent early onset atherosclerosis and reduce the increased risk of CD, when the effects of lifestyle modification are not sufficient.

As expected, statins are highly efficient in reducing plasma levels of LDL-C and have been proven to inhibit progression of early atherosclerotic changes in the vessel wall. But we still lack information about early and late-onset side effects of this class of drug, resulting from their early-onset and predicted life-long usage. The possible effects on mental development are related to the importance of cholesterol in the developing brain, for myelin formation, synaptogenesis, and neural plasticity. Other questions are the dosing used in FH children and the age at which statin therapy should be initiated [23]–[25].

The Cochrane Review recommended that statin treatment should not be started before the age of eight, and that the duration of a delay in the initiation of statin therapy should be based on individual risk stratification [23]. To determine whether statins are safe as a long-term therapy in childhood, would require large and long-term randomized controlled multicenter trials with thousands of FH children, and of at least 10 years of follow-up [25].

In children where statins are poorly tolerated or contraindicated, alternative lipid-lowering treatment might be necessary. Ezetimibe as a single drug might be an important treatment strategy for young patients, although additional studies are needed to evaluate long-term safety and efficacy of Ezetimibe [25] [26].

An important challenge is related to the education of physicians. A recent follow-up study showed that only 26% of children aged 10.9 (SD 4.2) years with FH were medicated with statins, while the remaining received lifestyle advice solely [27]. Since FH inevitably leads to premature CD, only full compliance with statins is an adequate goal [24]. Pediatricians and general physicians should be aware of the benefits of the early identifica-

tion of these patients and make use of molecular diagnosis to correctly treat their cardiovascular risk.

4. Conclusions

It was very important to establish a Portugal-wide register of children with a clinical and genetic diagnosis of FH with annual follow-up, in order to learn about the new mutations and their impact in the different phenotypes and therapeutic efficiencies.

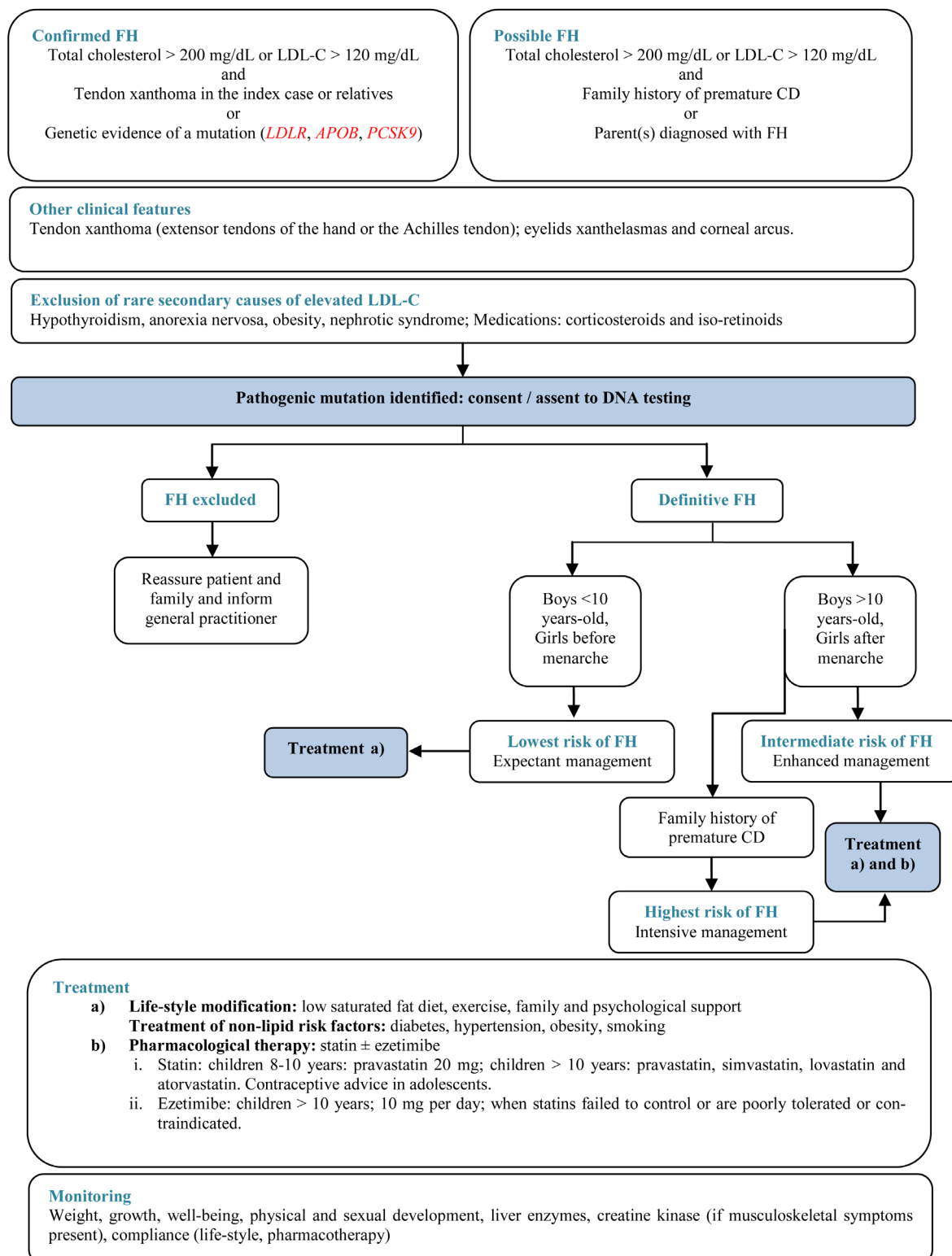
Finally, childhood is an important time to optimize cardiovascular health because risk factors manifest when health behaviors develop and risk reduction will have the greatest impact. All individuals with a possible diagnosis of FH should be clinically assessed according to the recommended options shown in the algorithm.

References

- [1] Goldstein, J.L., Hobbs, H. and Brown, M.S. (1995) Familial Hypercholesterolemia. In: Scriver, C.R., Beaudet, A.L., Sly, W.S. and Valle, D., Eds., *The Metabolic and Molecular Bases of Inherited Disease*, 7th Edition, McGraw-Hill, New York, 1981-2030.
- [2] Bourbon, M., Rato, Q. and Investigators of the Portuguese FH Study (2006) Portuguese Familial Hypercholesterolemia Study: Presentation of the Study and Preliminary Results. *Revista Portuguesa de Cardiologia*, **25**, 999-1013.
- [3] Kwiterovich, P.O. (2008) Clinical and Laboratory Assessment of Cardiovascular Risk in Children: Guidelines for Screening, Evaluation and Treatment. *Journal of Clinical Lipidology*, **2**, 248-266. <http://dx.doi.org/10.1016/j.jacl.2008.06.003>
- [4] Rader, D.J., Cohen, J. and Hobbs, H.H. (2003) Monogenetic Hypercholesterolemia: New Insights in Pathogenesis and Treatment. *Journal of Clinical Investigation*, **111**, 1795-1803. <http://dx.doi.org/10.1172/JCI200318925>
- [5] Guardamagna, O., Restagno, G., Rolfo, E., Pederiva, C., Martini, S., Abello, F., Baracco, V., Pisciotto, L., Pino, E., Calandra, S. and Bertolini, S. (2009) The Type of LDLR Gene Mutation Predicts Cardiovascular Risk in Children with Familial Hypercholesterolaemia. *Journal of Pediatrics*, **155**, 199-204. <http://dx.doi.org/10.1016/j.jpeds.2009.02.022>
- [6] Fouchier, S.W., Defesche, J.C., Kastelein, J.J. and Sijbrands, E.J. (2004) Familial Defective Apolipoprotein B versus Familial Hypercholesterolemia: An Assessment of Risk. *Seminars in Vascular Medicine*, **4**, 259-264. <http://dx.doi.org/10.1055/s-2004-861493>
- [7] Garcia-Alvarez, I., Castillo, S., Mozas, P. and Grupo de Estudio de la Hipercolesterolemia Familiar (2003) Differences in Clinical Presentation between Subjects with a Phenotype of Familial Hypercholesterolemia Determined by Defects in the LDL-Receptor and Defects in Apo B-100. *Revista Española de Cardiología*, **56**, 769-774.
- [8] Harada-Shiba, M., Arai, H., Oikawa, S., Ohta, T., Okada, T., Okamura, T., Nohara, A., Bujo, H., Yokote, K., Wakatsuki, A., Ishibashi, S. and Yamashita, S. (2012) Guidelines for the Management of Familial Hypercholesterolemia. *Journal of Atherosclerosis and Thrombosis*, **19**, 1043-1060. <http://dx.doi.org/10.5551/jat.14621>
- [9] Rodenburg, J., Vissers, M.N., Wiegman, A., Trip, M.D., Bakker, H.D. and Kastelein, J.J. (2004) Familial Hypercholesterolemia in Children. *Current Opinion in Lipidology*, **15**, 405-411. <http://dx.doi.org/10.1097/01.mol.0000137228.92396.f3>
- [10] Wiegman, A., de Groot, E., Hutten, B.A., Rodenburg, J., Gort, J., Bakker, H.D., Sijbrands, E.J. and Kastelein, J.J. (2004) Arterial Intima-Media Thickness in Children Heterozygous for Familial Hypercholesterolaemia. *Lancet*, **363**, 342-343. [http://dx.doi.org/10.1016/S0140-6736\(04\)15467-6](http://dx.doi.org/10.1016/S0140-6736(04)15467-6)
- [11] Marks, D., Thorogood, M., Neil, H.A. and Humphries, S.E. (2003) A Review on the Diagnosis, Natural History, and Treatment of Familial Hypercholesterolaemia. *Atherosclerosis*, **168**, 1-14. [http://dx.doi.org/10.1016/S0021-9150\(02\)00330-1](http://dx.doi.org/10.1016/S0021-9150(02)00330-1)
- [12] Defesche, J.C., Lansberg, P.J., Umans-Eckenhausen, M.A. and Kastelein, J.J. (2004) Advanced Method for the Identification of Patients with Inherited Hypercholesterolemia. *Seminars in Vascular Medicine*, **4**, 59-65. <http://dx.doi.org/10.1055/s-2004-822987>
- [13] Lind, S., Rudling, M., Ericsson, S., Olivecrona, H., Eriksson, M., Borgström, B., Eggertsen, G., Berglund, L. and Angelin, B. (2004) Growth Hormone Induces Low-Density Lipoprotein Clearance but Not Bile Acid Synthesis in Humans. *Arteriosclerosis, Thrombosis, and Vascular Biology*, **24**, 349-356. <http://dx.doi.org/10.1161/01.ATV.0000110657.67317.90>
- [14] Humphries, S.E., Cranston, T., Allen, M., Middleton-Price, H., Fernandez, M.C., Senior, V., Hawe, E., Iversen, A., Wray, R., Crook, M.A. and Wierzbicki, A.S. (2006) Mutational Analysis in UK Patients with a Clinical Diagnosis of Familial Hypercholesterolaemia: Relationship with Plasma Lipid Traits, Heart Disease Risk and Utility in Relative Tracing. *Journal of Molecular Medicine*, **84**, 203-214. <http://dx.doi.org/10.1007/s00109-005-0019-z>
- [15] Fouchier, S.W., Kastelein, J.J. and Defesche, J.C. (2005) Update of the Molecular Basis of Familial Hypercholesterolemia.

- emia in the Netherlands. *Human Mutation*, **26**, 550-556. <http://dx.doi.org/10.1002/humu.20256>
- [16] Leren, T.P. (2004) Cascade Genetic Screening for Familial Hypercholesterolemia. *Clinical Genetics*, **66**, 483-487. <http://dx.doi.org/10.1111/j.1399-0004.2004.00320.x>
- [17] Watts, G.F., Gidding, S., Wierzbicki, A.S., Toth, P.P., Alonso, R., Brown, W.V., Bruckert, E., Defesche, J., Lin, K.K., Livingston, M., Mata, P., Parhofer, K.G., Raal, F.J., Santos, R.D., Sijbrands, E.J., Simpson, W.G., Sullivan, D.R., Sussekov, A.V., Tomlinson, B., Wiegman, A., Yamashita, S. and Kastelein, J.J. (2014) Integrated Guidance on the Care of Familial Hypercholesterolaemia from the International FH Foundation. *International Journal of Cardiology*, **171**, 309-325. <http://dx.doi.org/10.1016/j.ijcard.2013.11.025>
- [18] Alves, A.C., Medeiros, A.M., Francisco, V., Gaspar, I.M., Rato, Q. and Bourbon, M. (2010) Molecular Diagnosis of Familial Hypercholesterolemia: An Important Tool for Cardiovascular Risk Stratification. *Revista Portuguesa de Cardiologia*, **29**, 907-921.
- [19] Leigh, S.E., Foster, A.H., Whittall, R.A., Hubbart, C.S. and Humphries, S.E. (2008) Update and Analysis of the University College London Low Density Lipoprotein Receptor Familial Hypercholesterolemia Database. *Annals of Human Genetics*, **72**, 485-498. <http://dx.doi.org/10.1111/j.1469-1809.2008.00436.x>
- [20] Garcia-Garcia, A.B., Ivorra, C., Martinez-Hervas, S., Blesa, S., Fuentes, M.J., Puig, O., Martín-de-Llano, J.J., Carmena, R., Real, J.T. and Chaves, F.J. (2011) Reduced Penetrance of Autosomal Dominant Hypercholesterolemia in a High Percentage of Families: Importance of Genetic Testing in the Entire Family. *Atherosclerosis*, **218**, 423-430. <http://dx.doi.org/10.1016/j.atherosclerosis.2011.07.106>
- [21] Kotze, M.J., Davis, H.J., Bissbort, S., Langenhoven, E., Brusnick, J. and Oosthuizen, C.J. (1993) Intrafamilial Variability in the Clinical Expression of Familial Hypercholesterolemia: Importance of Risk Factor Determination for Genetic Counselling. *Clinical Genetics*, **43**, 295-299. <http://dx.doi.org/10.1111/j.1399-0004.1993.tb03821.x>
- [22] Medeiros, A.M., Alves, A.C., Francisco, V., Bourbon, M. and investigators of the Portuguese FH Study (2010) Update of the Portuguese Familial Hypercholesterolaemia Study. *Atherosclerosis*, **212**, 553-558. <http://dx.doi.org/10.1016/j.atherosclerosis.2010.07.012>
- [23] Vuorio, A., Kuoppala, J., Kovanen, P.T., Humphries, S.E., Strandberg, T., Tonstad, S. and Gylling, H. (2010) Statins for Children with Familial Hypercholesterolemia. *Cochrane Database of Systematic Reviews*, **7**, Article ID: CD006401.
- [24] Vuorio, A., Docherty, K., Humphries, S., Kuoppala, J. and Kovanen, P. (2013) Statin Treatment of Children with Familial Hypercholesterolemia—Trying to Balance Incomplete Evidence of Long-Term Safety and Clinical Accountability: Are We Approaching a Consensus? *Atherosclerosis*, **226**, 315-320. <http://dx.doi.org/10.1016/j.atherosclerosis.2012.10.032>
- [25] Braamskamp, M.J., Wijburg, F.A. and Wiegman, A. (2012) Drug Therapy of Hypercholesterolaemia in Children and Adolescents. *Drugs*, **72**, 759-772. <http://dx.doi.org/10.2165/11632810-000000000-00000>
- [26] Araujo, M.B., Botto, P.M. and Mazza, C.S. (2012) Use of Ezetimibe in the Treatment of Familial Hypercholesterolemia in Children and Adolescents. *Anales de Pediatría*, **77**, 37-42. <http://dx.doi.org/10.1016/j.anpedi.2011.11.007>
- [27] Avis, H.J., Kusters, M., Vissers, M.N., Huijgen, R., Janssen, T.H., Wiegman, A., Kindt, I., Kastelein, J.J., Wijburg, F.A. and Hutten, B.A. (2012) Follow-Up of Children Diagnosed with Familial Hypercholesterolemia in National Genetic Screening Program. *Journal of Pediatrics*, **161**, 99-103. <http://dx.doi.org/10.1016/j.jpeds.2011.12.037>

Supplementary Figure. Algorithm for the Diagnosis and Management of FH in Children and Adolescents.



Scientific Research Publishing (SCIRP) is one of the largest Open Access journal publishers. It is currently publishing more than 200 open access, online, peer-reviewed journals covering a wide range of academic disciplines. SCIRP serves the worldwide academic communities and contributes to the progress and application of science with its publication.

Other selected journals from SCIRP are listed as below. Submit your manuscript to us via either submit@scirp.org or [Online Submission Portal](#).

