

Application of Response Surface Methodology for Optimization of Fluoride Removal Mechanism by Newly Developed Biomaterial

Ria Bhaumik, Naba Kumar Mondal*, Soumya Chattoraj, Jayanta Kumar Datta

Department of Environmental Science, The University of Burdwan, Burdwan, India

Email: *nkmenbu@gmail.com

Received May 17, 2013; revised June 17, 2013; accepted July 15, 2013

Copyright © 2013 Ria Bhaumik *et al.* This is an open access article distributed under the Creative Commons Attribution License, which permits unrestricted use, distribution, and reproduction in any medium, provided the original work is properly cited.

ABSTRACT

The adsorption capacities of new biomaterials derived from lemon leaf (*Citrus* sp.) toward fluoride ions have been explored by varying different physicochemical parameters such as pH, initial concentration, adsorbent dose, contact time, stirring rate and temperature. The entire study was done through batch process. Maximum fluoride adsorption of 96.9% - 98.8% was achieved with an initial concentration of 10 mg/L. Langmuir isotherm model well expressed fluoride adsorption onto LLD-1, LLD-2 and LLD-3. According to correlation coefficient, the fluoride adsorption onto these 3 adsorbents was correlated well with pseudo-second-order kinetic model. From thermodynamic study, the spontaneous nature and feasibility of the adsorption process with negative enthalpy (ΔH^0) value also supported the exothermic nature were shown. The rate of fluoride adsorption was mathematically described as a function of experimental parameters and was modeled through Box-Behnken (Response surface methodology). The results showed that the responses of fluoride adsorption were significantly affected by the quadratic term of pH, initial concentration, contact time and temperature and the statistical analysis was performed by ANOVA which indicated good correlation of experimental parameters.

Keywords: Lemon Leaf; Fluoride; Adsorption; Langmuir Isotherm; Pseudo-Second-Order Kinetic Model; Thermodynamic Study; Response Surface Methodology

1. Introduction

Fluorine is one of the strong electronegative elements and its gaseous form is tremendous powerful oxidizing agent. It exists in underground water as fluoride ion (F^-). However, natural abundance of fluorine ranges from 0.06% to 0.09% by weight in the earth crust [1].

Fluoride is mainly toxic to the human body when it exceeds the threshold limit of 1.5 mg/L [2]. The excess intake of fluoride may cause fluorosis (dental and skeletal), neurological damage [3] decreasing growth and intelligence [4]. There is a tremendous demand for removal of fluoride from drinking water. In recent years, various plant materials like coconut shell [4], bone char, [5] tamarind seed, neem and kitar leaves [6], Barmuda grass [7] neem charcoal [8], *Moringa oleifera* seed [9] have also been used as adsorbents for defluoridation. There is a gap in knowledge about the carbonized and chemically treated forms. But classical batch adsorption technique is unable to provide fine optimization. To

overcome such a problem by taking the help of computerize optimization process called Response Surface Methodology (RSM), in this study lemon leaf was chosen for fluoride adsorption as dried powder (LLD-1), carbonized form (LLD-2) and chemically treated (LLD-3) together to establish new adsorbents for defluoridation. Due to carbonization high specific surface area occurred in the adsorbent and due to chemical treatment, more binding sites appear which are responsible for more fluoride adsorption than naturally occurring materials.

It is well known that consumption of lemon leaf is one of the most common fruit grown mainly in all tropical countries, including India. In fresh samples, high levels of calcium occur in the vacuoles and especially the inner tangential walls of epidermal and sub-epidermal cells near the gap of the abscission zone. Calcium containing crystals (calcium oxalate) is also abundant in vacuoles of the cortex parenchyma and leaf blade sides [10]. In 2004, Storey and Leig explained citrus leaves accumulate large amounts of calcium in palisade, spongy mesophyll and crystal containing idioblast cells.

*Corresponding author.

RSM (Response Surface Methodology), an empirical modeling technique [11], is used to estimate the relationship between a set of controllable experimental factors and observed results. RSM consists of 3 major steps: performing statistically designed experiments, estimating the coefficients in a mathematical model and predicting the response and checking the adequacy of the model. RSM can avoid the limitations of conventional methods and is commonly used in many fields [12]. In this study a class of three level complete factorial designs (Box-Behnken model) was used to determine the show and the effects of major operating variables on fluoride adsorption and to find the combination of variables resulting in maximum fluoride adsorption efficiency. This design was applied using Design Expert Software 7.0 with six variables at 3 levels. Four different parameters such as initial fluoride concentration, pH, contact time and temperature were selected as the critical variables. A total of 17 experiments have been employed in this work to estimate the effects of the six main independent variables on fluoride adsorption efficiency.

This present study searches new technology involving the removal of fluoride from contaminated water due to adsorption based on binding capacities of calcium (with fluoride) presented in lemon leaf. The major advantages of this study fluoride adsorption by lemon leaf powder, activated carbon and chemically treated lemon leaf powder also include low cost, high efficiency and minimization of fluoride contaminated water.

2. Adsorbents Development

The adsorbent material named as lemon leaves were obtained from University farm and were washed with double distilled water in the laboratory. Then the leaves were dried at 50°C for 24 h. One-third leaves were cut and grinded well by using mortar and pestle and then sieved to obtain the desired size fractions (250 µm) and used as adsorbent LLD-1. Another 1/3 rd dried leaves are activated with 1% HCHO solution and then again dried in oven maintained temperature range of 120°C - 140°C for a period of 12 hrs. After that the ash material were ground and sieved [6] and used as adsorbent LLD-2. And the remaining part of leaves were treated with Ca⁺² solution extracted from eggshell (LLD-3) [13] and used as adsorbent.

3. Fluoride Adsorption Experiments

The defluoridation studies were conducted for the optimization of various experimental conditions like pH, initial concentration, adsorbent dose, contact time, stirring rate and temperature through batch process. The adsorption isotherm, kinetics and thermodynamic study were also done in this study. All the experiments were

carried out at room temperature. Fluoride ion was measured with a specific ion-selective electrode (Orion ion selective) by use of TISAB II solution to maintain pH 5 - 5.5.

The amount of fluoride adsorbed per unit adsorbent (mg fluoride/g adsorbent) was calculated according to a mass balance on the fluoride concentration using Equation (1):

$$q_e = \frac{(C_i - C_e) \times V}{m} \quad (1)$$

The percent removal (%) of fluoride was calculated using the following equation

$$\text{Removal}(\%) = \frac{(C_i - C_e)}{C_e} \times 100 \quad (2)$$

4. Results and Discussions

4.1. Characterization of the Adsorbents

Physico-chemical characterizations of the adsorbents were shown in **Table 1** and these characterizations were done by using standard methods.

From **Table 1** comparing the important characteristics of LLD-1, LLD-2 and LLD-3, the carbon content of LLD-2 was higher than others due to increasing in the ash content.

Table 1 shows that LLD-3 and LLD-2 have the higher surface area and total pore volume than LLD-1 indicating the roughness of pore walls and increasing of additional active sites. Then more active sites are responsible for adsorption of fluoride ions onto the surface of the LLD-3 and LLD-2 than LLD-1.

Scanning electron microscopy (SEM) (**Figure 1**) helps to explain the surface structure of the powder consisting of the fine particles of irregular shape and size on external surface. **Figure 1(c)** shows SEM images of LLD-3 having particle size of 250 µm, where some deposits of calcium were observed only in the sample by modification of lemon leaf pure dust (LLD-1) (**Figure 1**).

Table 1. Physico-chemical Characteristics of LLD-1, LLD-2, LLD-3.

Physical characteristics	LLD-1	LLD-2	LLD-3
pH	6.2	6.7	8.5
EC (mho/cm)	1.5	1.6	1.7
Bulk density (g/cm ³)	0.86	0.62	0.84
Solubility in water (%)	0.5	0.7	0.8
Solubility in acid (%)	0.6	0.75	0.89
Moisture content (%)	4.2	4.6	4.9
Ash content	-	6.12	-
BET Surface area	285.6	824.3	804.5

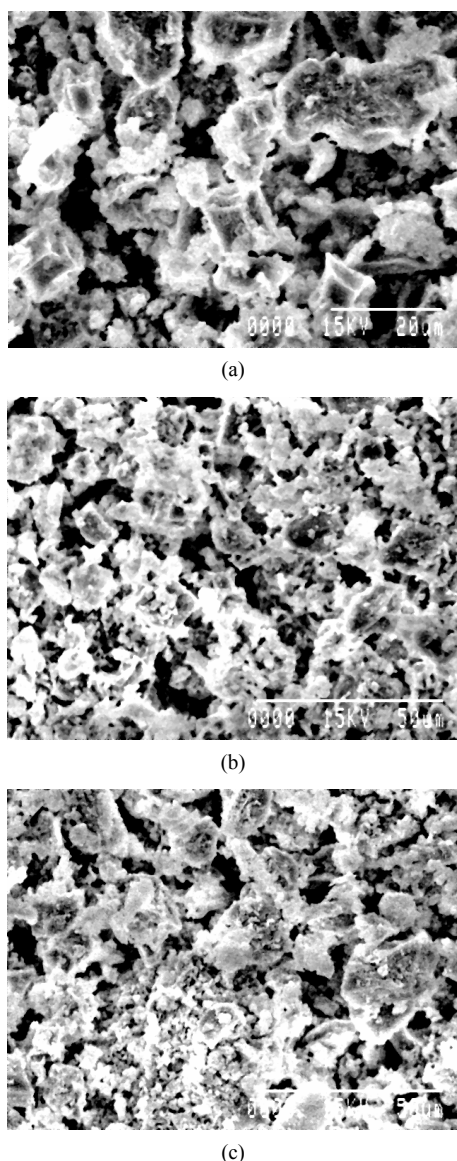


Figure 1. Scanning Electron Microscopy (SEM) images of LLD-1 (a), LLD-2 (b), LLD-3 (c).

FTIR measurements (**Figure 2**) of LLD-1, LLD-2 and LLD-3 showed the presence of peaks $589 - 607 \text{ cm}^{-1}$ are due to P-O bending vibration, $882 - 1098 \text{ cm}^{-1}$ are due to P-O stretching vibration. The inferred peaks at $2918 - 3628 \text{ cm}^{-1}$ are due to adsorption water. An adsorption bands are shown at $691 - 696 \text{ cm}^{-1}$ and at $3571 - 3694 \text{ cm}^{-1}$ which are attributed to the OH groups.

Zero point charge (pH_{ZPC}) of 3 adsorbents (LLD-1, LLD-2 and LLD-3) was measured by the solid addition method [14]. Changes in final pH from initial pH indicate the adsorptive process through dissociation of functional groups as the active sites on the surface of adsorbents. **Figure 3** shows the point of zero charge of LLD-1, LLD-2 and LLD-3 7.0, 6.5 and 6.2 respectively. At low pH, the surface of the adsorbent is positive and reaction

predominates and at higher pH the surface of adsorbent is negative. Here, the pH of the fluoride solution becomes lower than point charge, the association of fluoride ions with the adsorbent surface easily takes place and this study the surface of LLD-3 is more effective than LLD-2 and LLD-1.

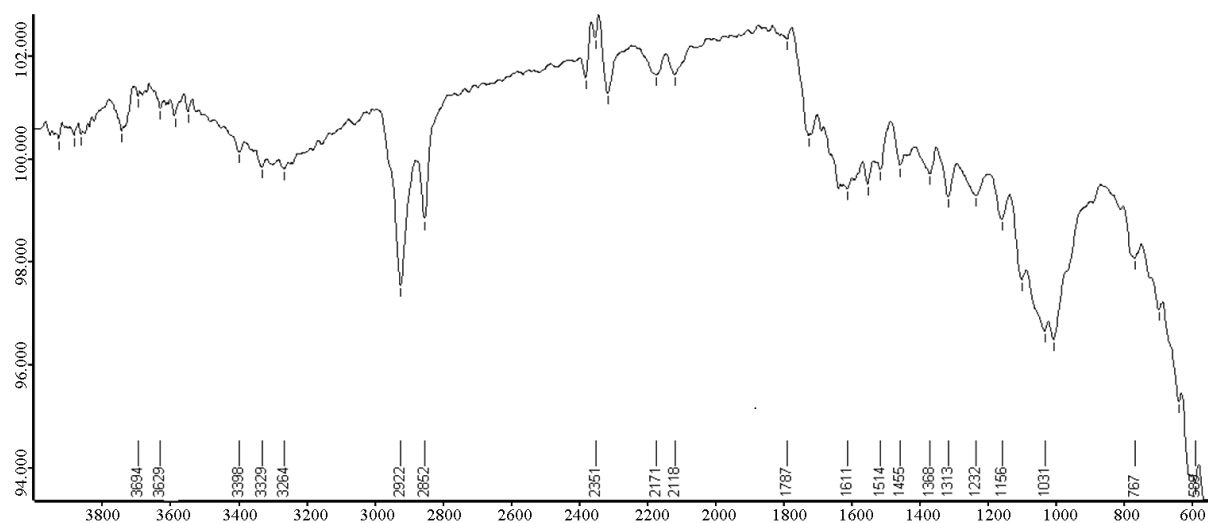
4.2. Effect of pH

The pH of the fluoride solution varied from 2 to 10 and the pH was adjusted by adding 0.1 (N) NaOH and 0.1 (N) HNO_3 solution. **Figures 4(a)** and **(b)** show that both adsorption and fluoride uptake capacity are maximum at pH 6.0. Here, it is also shown that fluoride ions are more attached to the surface of LLD-3 due to chemically treated with Ca^{+2} solution (extracted from eggshell) at pH lower than pH zpc. pH played a vital role in fluoride adsorption onto biosorbent [15]. However, many researchers [16,17] reported that biosorption of fluoride depends on the functional groups on the adsorbent and their ionic states. There are several studies concluded that biomass based biosorbent have several functional groups (such as amines, carbaryl, thiol, sulfhydryl, alcohol, phenol and phosphate groups) [18,19]. Study results revealed that highest fluoride adsorption occur at acidic pH (6.0) for all adsorbents. These sorption characteristics could be attributed to the ionic sorption with cationic (H^+) adsorbent surface [17]. Under acidic condition the surface of the adsorbent transformed to a positively charged which facilitated the sorption of fluoride ion through anion exchange [18]. However, the percentage of fluoride removal inhibited at higher pH, this might be attributed to the increase of hydroxyl ions leading to formation of aqua complexes.

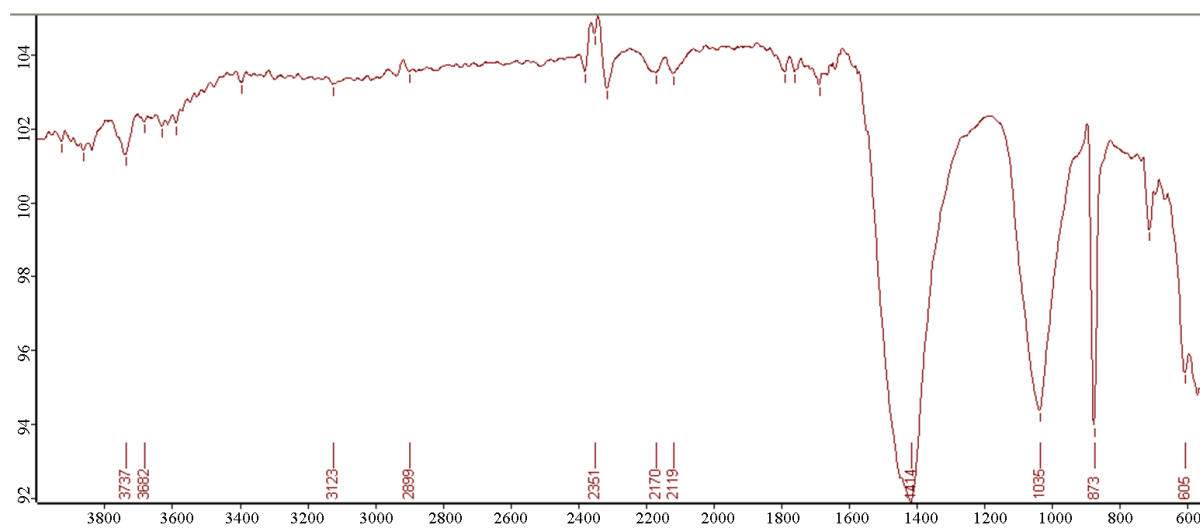
4.3. Effect of Initial Concentration and Adsorption Isotherm Models

In the batch adsorption study after selection of pH the initial concentration (1.5, 3.0, 5.0, 10.0, 15.0 mg/L) is varied. Adsorption of fluoride (**Figures 5(a)** and **(b)**) increases up to initial concentration 10.0 mg/L (for all the three adsorbents) whereas at higher concentration adsorption is decreased. Lower concentration causes more interaction of fluoride ions with the binding sites and at higher concentration increase in the number of ions are responsible for competition in availability of binding sites in the adsorbent surface [20].

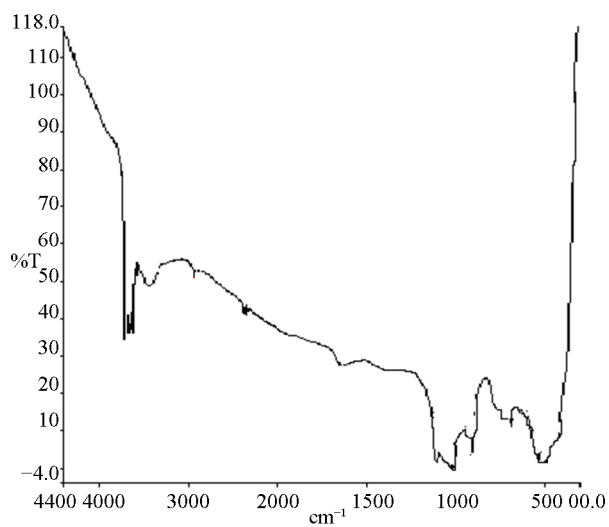
Moreover as the total available adsorption sites were limited, they became saturated at a higher concentration [14]. Similar trend has been reported for fluoride removal by using neem charcoal and eggshell dust [21,22]. The results of **Figure 5** demonstrate that the amount of adsorbed fluoride increased with the increase of initial fluoride concentrations. The increase of fluoride



(a)



(b)



(c)

Figure 2. FTIR spectrum of a) LLD-1, b) LLD-2 and c) LLD-3 before fluoride adsorption.

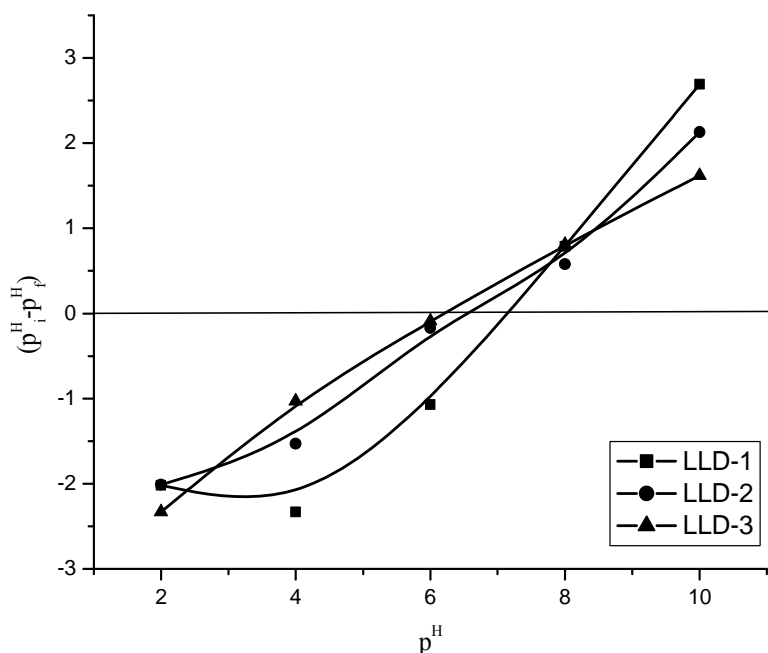


Figure 3. Zero point charge curve of LLD-1, LLD-2 and LLD-3.

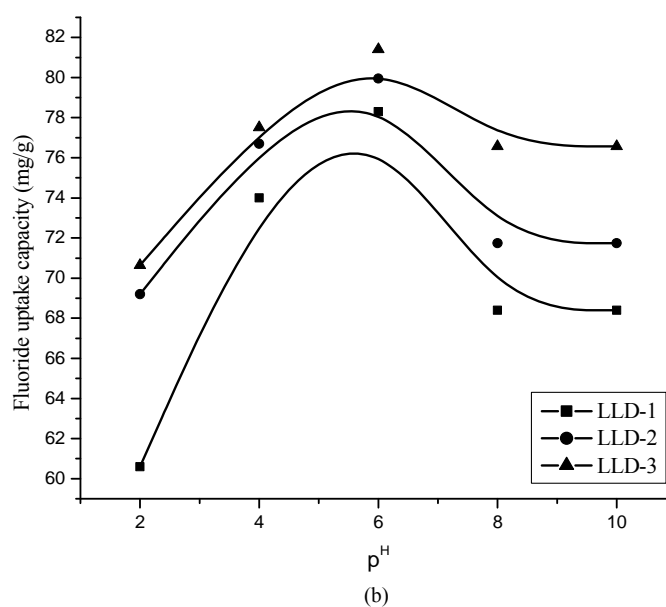
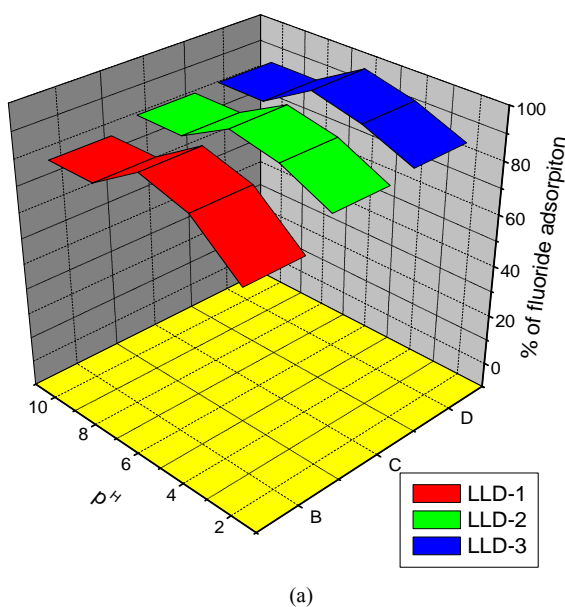


Figure 4. (a) Effect of p^H on % of fluoride adsorption. (Initial fluoride concentration of 10 ppm; adsorbent dose 0.05 g/L of solution; contact time of 60 min, stirring rate 550 rpm, temperature 303 K). (b) Effect of p^H on fluoride uptake capacity. (Initial fluoride concentration of 10 ppm; adsorbent dose 0.05 g/L of solution; contact time of 60 min, stirring rate 550 rpm, temperature 303 K).

concentration is the main driving force behind overcoming all mass transfer resistance of the fluoride, between the aqueous and solid phases [18]. This phenomena lead to increase the equilibrium sorption, until whole adsorbent saturation was achieved [14]. In fluoride adsorption isotherm study the equilibrium data isotherm analysis onto LLD-1, LLD-2 and LLD-3 at p^H 6.0 and 303 K temperature were analyzed using Langmuir, Freundlich,

D-R and Tempkin isotherms. The isotherm parameters with their linear form are listed in **Table 2**. The maximum adsorption capacity of fluoride (q_{max} , from Langmuir model) onto LLD-3 surface is higher (38.46 mg/g) than LLD-2 and LLD-1 which correspond to complete monolayer coverage. The value of R_L is also more in LLD-3 than other indicating better adsorbent. According to Freundlich isotherm the value of “n” is high in LLD-2

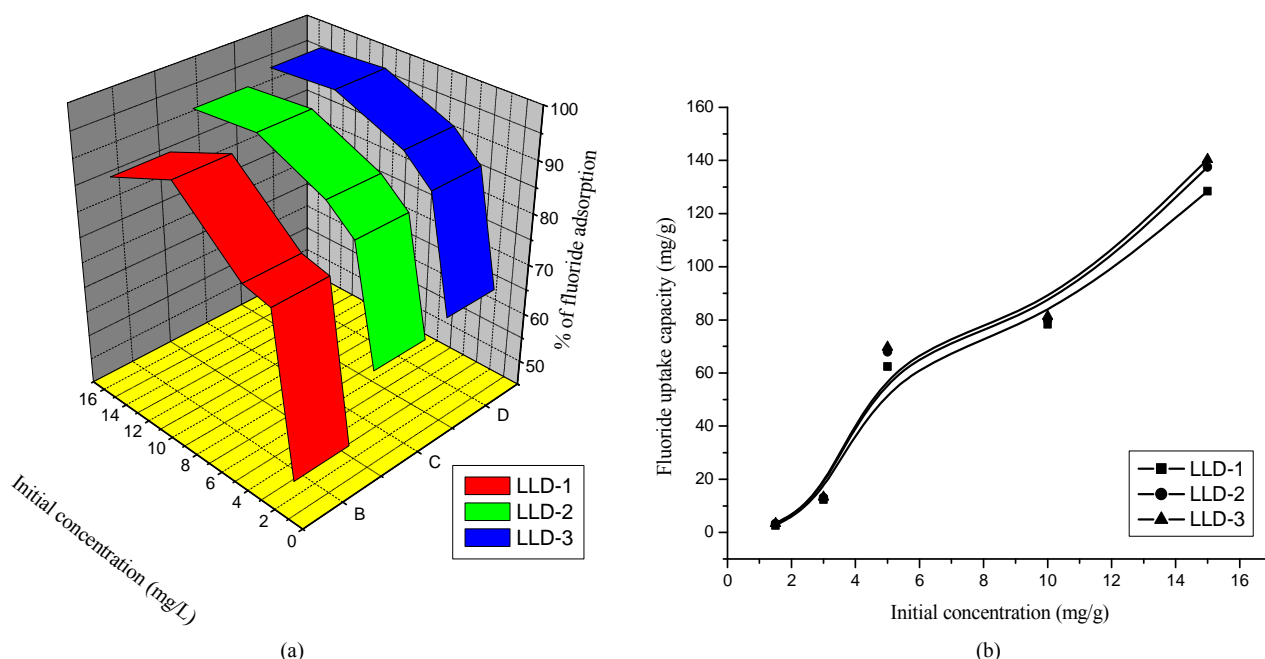


Figure 5. (a) Effect of initial concentration on % of fluoride adsorption (pH 6.0; adsorbent dose 0.05 g/L of solution; contact time of 60 min, stirring rate 550 rpm, temperature 303 K). (b) Effect of initial concentration on fluoride uptake capacity. (pH 6.0; adsorbent dose 0.05 g/L of solution; contact time of 60 min, stirring rate 550 rpm, temperature 303 K).

Table 2. Parameters of isotherm models of fluoride adsorption onto LLD-1, LLD-2 and LLD-3.

Isotherm models	LLD-1	LLD-2	LLD-3
Langmuir	$K_L = 0.072$	$K_L = 0.204$	$K_L = 0.083$
	$R_L = 0.93$	$R_L = 0.83$	$R_L = 0.92$
	$q_m = 7.63$	$q_m = 27.03$	$q_m = 38.46$
	$R^2 = 0.84$	$R^2 = 0.98$	$R^2 = 0.99$
Freundlich	$K_f = 0.45$	$K_f = 0.035$	$K_f = 0.036$
	$n = 1.72$	$n = 6.06$	$n = 6.53$
	$R^2 = 0.73$	$R^2 = 0.96$	$R^2 = 0.96$
	$q_{max} = 42.5$	$q_{max} = 27.41$	$q_{max} = 27.03$
D-R	$K_{DR} = 0.123$	$K_{DR} = 0.01$	$K_{DR} = 0.007$
	$E_s = 2.85$	$E_s = 10$	$E_s = 11.95$
	$R^2 = 0.94$	$R^2 = 0.92$	$R^2 = 0.92$
	$B_1 = 5.18$	$B_1 = 5.44$	$B_1 = 4.79$
Tempkin	$K_T = 9.43$	$K_T = 1.71$	$K_T = 1.81$
	$R^2 = 0.76$	$R^2 = 0.89$	$R^2 = 0.89$

and LLD-3, which also indicates both (6.06 and 6.53 respectively) adsorbents are more effective in fluoride adsorption process than LLD-1. The maximum adsorption capacity (q_{max}) obtained from D-R isotherm of LLD-1, LLD-2 and LLD-3 are 4.25, 27.41, 27.03 respectively lower than the value of adsorption capacity obtained from Langmuir isotherm. D-R isotherm gives β constant, and idea about the mean free energy (E_s , $\text{kJ}\cdot\text{mol}^{-1}$) of

adsorbate when it is transferred to the surface of the solid from infinity in the solution. The E_s value of LLD-1, LLD-2 and LLD-3 are 2.85, 10 and 11.95 directing the physical adsorption mechanism of fluoride onto these adsorbents [22]. Tempkin isotherm constant are shown in **Table 2**. From the isotherm analysis, it is clear that adsorption nature of fluoride onto LLD-1, LLD-2 and LLD-3 adsorbents best fitted to Langmuir and D-R iso-

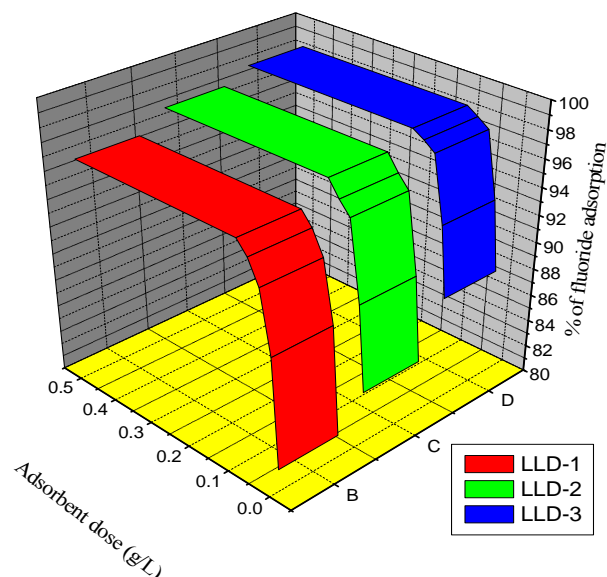
therm model which suggests uniform binding energy on the whole surface of the adsorbents. These results also signify that fluoride ions were adsorbed by a monolayer formation.

4.4. Effect of Adsorbent Dose

At lower adsorbent dose, **Figure 6(a)** shows in case of LLD-1, LLD-2 and LLD-3 percentage of fluoride adsorption is low but fluoride uptake capacity is high (**Figure 6(b)**). The B-Sp line as flat suggesting the highest fluoride adsorption occurs at 0.1 g/L and the followings remains constant. This is probably due to the overlapping of active sites at higher dosage and subsequently reducing the net surface area [23].

4.5. Effect of Contact Time

Figures 7(a) and **(b)** indicate the variations of fluoride adsorption by LLD-1, LLD-2 and LLD-3 adsorbents with respect to contact time. It has been revealed from this study that percentage of fluoride adsorption and adsorption capacity both increased due to increasing of contact time and the curve gets equilibrium after 120 minutes. The removal efficiency of fluoride was increased which increasing time is probably due to participation of specific functional groups and active surface sites on adsorbents surfaces [17,24]. Similar findings were also reported by [24] for fluoride removal on biomass of *Spirogyra* sp. However, removal decreased after 120 minutes indicating the possible monolayer of fluoride ions on the outer surface, pores of both the adsorbents and pore diffusion onto inner surface of adsorbent particles [14].



4.6. Effect of Stirring Rate

The stirring rate in adsorption study is an essential parameter which can enhance a certain turbulence insuring a good contact between the adsorbate and adsorbent [24]. To determine the effect of stirring rate 250 rpm to 850 rpm speeds were chosen. **Figures 8(a)** and **(b)** show fluoride adsorption occurred rapidly in the first stirring rate from 250 rpm and at 550 rpm the fluoride adsorption rate and uptake capacity both are highest. Then beyond 550 rpm both remain more or less constant in case of these adsorbents due to higher speeds better contact between the fluoride ions and adsorbent surface is possible. In this study at 550 rpm, LLD-3 shows better fluoride adsorption rate (98.8%) and uptake capacity (41.4 mg/g) than other.

4.7. Effect of Temperature and Thermodynamic Study

The influence of temperature in adsorption process is very important because increasing the temperature induces a decrease in the adsorption capacity of fluoride on the adsorbent surface. **Figures 9(a)** and **(b)** shows reducing percentage of both fluoride adsorption and adsorption capacity due to increase of temperature beyond 313 K to 333 K. From **Table 3** the values of ΔG^0 (Gibbs free energy of adsorption, $\text{kJ}\cdot\text{mol}^{-1}$) at different temperatures, indicates the feasibility of the process and the spontaneous nature of fluoride ions onto adsorbents [22]. In case of tested adsorbents, during values of ΔG^0 due to increasing temperatures suggests the lower temperature makes the adsorption easier [22]. The value of ΔH^0

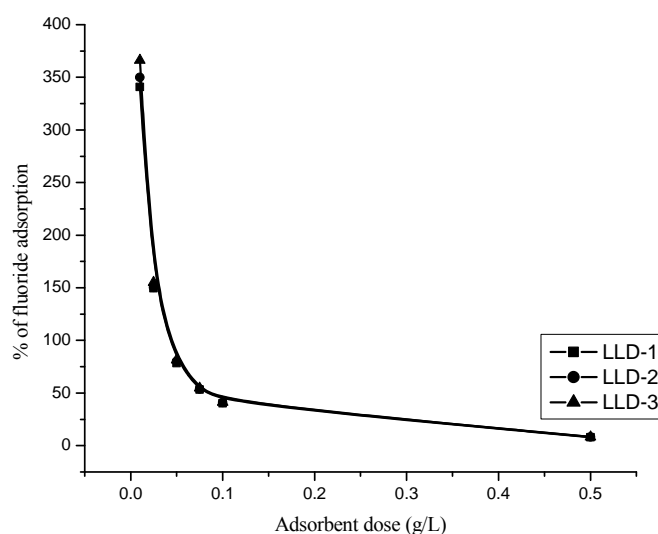


Figure 6. (a) Effect of adsorbent dose (g/L) on % of fluoride adsorption. (Initial fluoride concentration of 10 ppm; pH 6.0; contact time of 60 min, stirring rate 550 rpm, temperature 303 K). (b) Effect of adsorbent dose (g/L) on fluoride uptake capacity. (Initial fluoride concentration of 10 ppm; pH 6.0; contact time of 60 min, stirring rate 550 rpm, temperature 303 K).

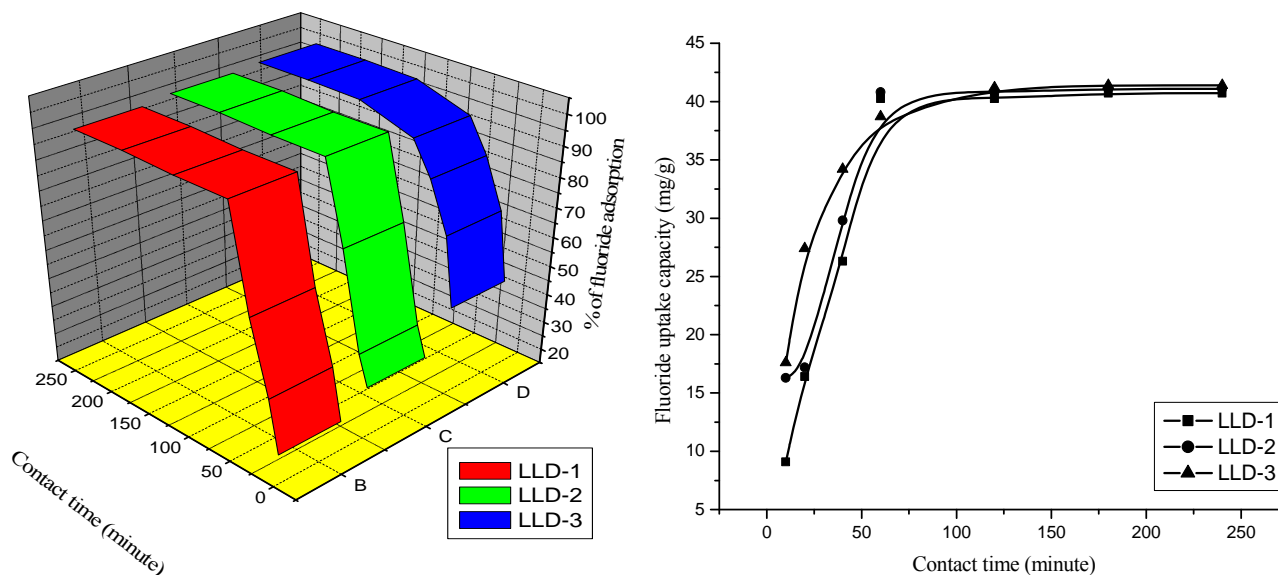


Figure 7. (a) Effect of contact time (minute) on % of fluoride adsorption. (Initial fluoride concentration of 10 ppm; pH 6.0; adsorbent dose 0.1 g/L; stirring rate 550 rpm, temperature 303 K). (b) Effect of contact time (minute) on fluoride uptake capacity. (Initial fluoride concentration of 10 ppm; pH 6.0; adsorbent dose 0.1 g/L; stirring rate 120 rpm, temperature 303 K).

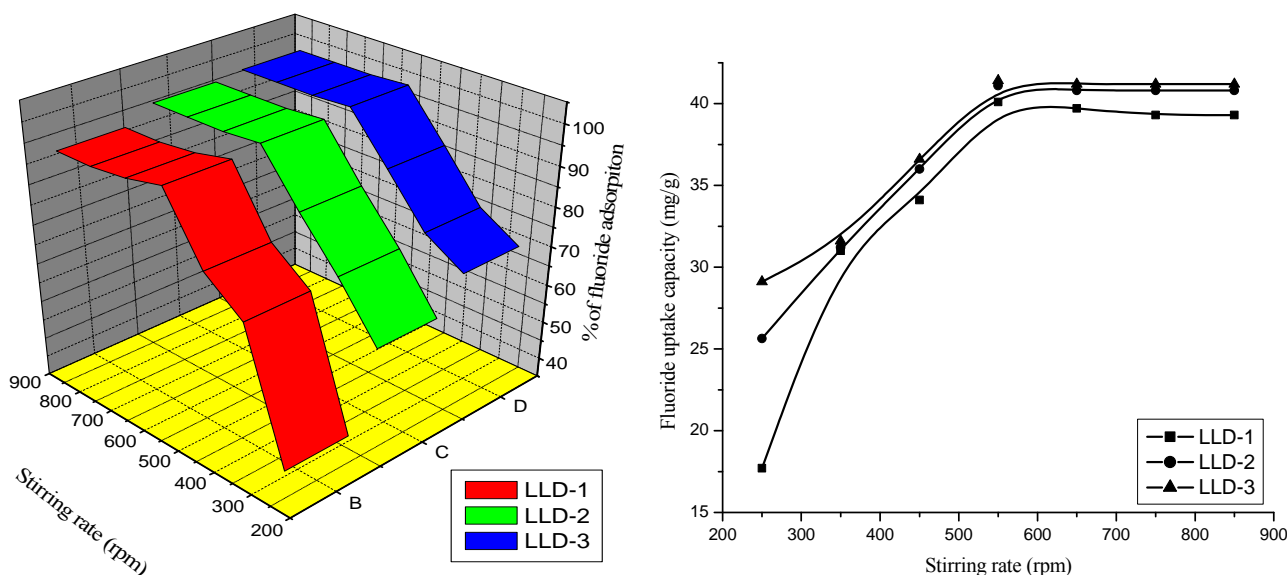


Figure 8. (a) Effect of stirring rate (rpm) on % of fluoride adsorption (Initial fluoride concentration of 10 ppm; pH 6.0; adsorbent dose 0.1 g/L; contact time 180 min; temperature 303 K). (b) Effect of stirring rate (rpm) on fluoride uptake capacity. (Initial fluoride concentration of 10 ppm; pH 6.0; adsorbent dose 0.1 g/L; contact time 180 min; temperature 303 K).

(enthalpy change of adsorption, $\text{kJ}\cdot\text{mol}^{-1}$) and ΔS^0 (entropy change of adsorption, $\text{kJ}\cdot\text{mol}^{-1}$) are also shown in Table 3, which indicate fluoride adsorption process onto LLD-1, LLD-2 and LLD-3 are explained by the exothermic in nature and the negative values of ΔS^0 indicate that during the fluoride adsorption the solid-solution interface researches a more organized structure (decrease of randomness).

4.8. Adsorption Kinetics Study

The experimental parameters (pH, initial concentration,

adsorbent dose, contact time, stirring rate and temperature) are responsible for their potential impact on percentage of fluoride adsorption and uptake capacity. These parameters also greatly influence on the external surface available for fluoride ion binding, diffusion properties and concentration gradient. Table 4 shows the values of pseudo-first, pseudo-second order kinetic constants and intraparticle diffusion model. Comparing these models, the fluoride adsorption is well fitted to the pseudo-second order kinetic model and the adsorption rate (h , $\text{mg}\cdot\text{g}^{-1}\cdot\text{min}^{-1}$) was calculated shown in Table 4.

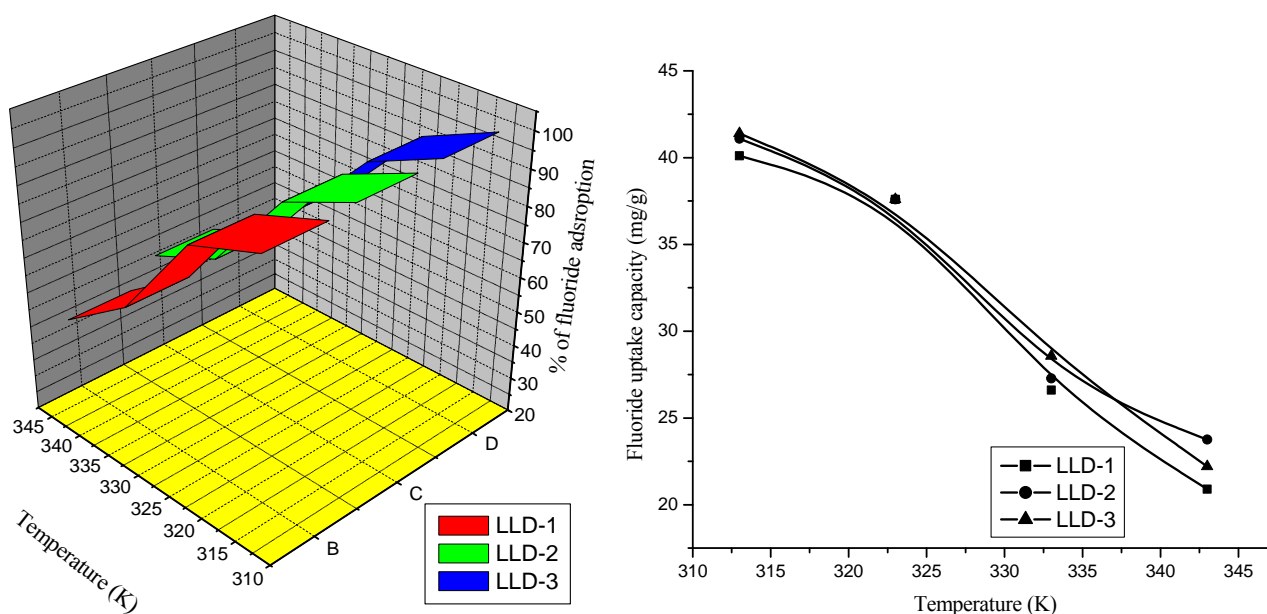


Figure 9. (a) Effect of temperature (K) on % of fluoride adsorption. (Initial fluoride concentration of 10 ppm; pH 6.0; adsorbent dose 0.1 g/L; contact time 180 min; stirring rate 650 rpm). (b) Effect of temperature (K) on fluoride uptake capacity. (Initial fluoride concentration of 10 ppm; pH 6.0; adsorbent dose 0.1 g/L; contact time 180 min; stirring rate 650 rpm).

Table 3. Thermodynamic parameters of fluoride adsorption onto LLD-1, LLD-2 and LLD-3.

Thermodynamic parameters	Temperature (K)	LLD-1	LLD-2	LLD-3
ΔG^0	303	-7.792	-9.321	-10.01
	313	-5.332	-6.191	-6.41
	323	-2.872	-3.061	-2.81
	333	-0.412	-0.069	-0.79
ΔH^0		-82.33	-104.16	-119.09
ΔS^0		-0.246	-0.313	-0.36

The value of h is high in LLD-3, LLD-2 and LLD-1 respectively which indicates all tested adsorbents are effective in fluoride adsorption.

4.9. Box-Behnken Statistical Analysis

In the present study, Box Behnken design was used to predict the fluoride adsorption rate. The complete design model was composed of 17 experimental runs with three replicates at the center points. The significant of the model was justified by the ANOVA. The ANOVA of fluoride adsorption rate is given in Tables 5-7. The model F-value is the ratio of mean square for the individual term to the mean square for the residual. The Prob > F value is the probability of F-statistics value and is used to test the null hypothesis. The parameters having an F-statistics probability value less than 0.05 are said to be significant. The pH of the solution, adsorbent dose, contact time, initial fluoride concentration, stirring rate and temperature are very effective in fluoride adsorption. Among these output variables, pH of the solution, initial

fluoride concentration, contact time and temperature had a significant effect on fluoride adsorption. Once the optimization was over the experimental and model predicted values of the response variables were compared. The plot between experimental (actual) and predicted values of fluoride adsorption rate is shown in Figures 10(a), (b) and (c). A good correlation between input and output variables are also shown by the model.

4.10. Effects of Experimental Parameters on Fluoride Adsorption

The effects of different experimental parameters such as solution pH, initial fluoride concentration, contact time and temperature on the fluoride adsorption is shown in Figures 11 (a)-(i). The fluoride adsorption capacity was increased with increase in initial fluoride concentration, contact time and decreased in solution pH and temperature. The adsorption of fluoride adsorption favors comparatively at low pH and room temperature. Tables 5-7 show the model F-value of LLD-1, LLD-2 and

Table 4. Parameters of kinetic models of fluoride adsorption onto LLD-1, LLD-2 and LLD-3.

Kinetic models	LLD-1	LLD-2	LLD-3
Pseudo-first-order	$q_{e1} = 2.33$	$q_{e1} = 1.01$	$q_{e1} = 1.14$
	$K_{ad1} = 0.009$	$K_{ad1} = 0.01$	$K_{ad1} = 0.014$
	$R^2 = 0.25$	$R^2 = 0.8$	$R^2 = 0.41$
Pseudo-second-order	$q_{e2} = 47.62$	$q_{e2} = 45.45$	$q_{e2} = 48.91$
	$K_{ad2} = 0.07$	$K_{ad2} = 0.001$	$K_{ad2} = 0.002$
	$R^2 = 0.99$	$R^2 = 0.99$	$R^2 = 0.99$
Intra-particle diffusion	$K_{it} = 2.03$	$K_{it} = 1.13$	$K_{it} = 0.691$
	$I = 4.07$	$I = 25.44$	$I = 31.92$
	$R^2 = 0.97$	$R^2 = 0.79$	$R^2 = 0.72$

Table 5. Analysis of variance for fluoride adsorption rate onto LLD-1. ANOVA for response surface Quadratic Model Analysis of variance table [Partial sum of squares-Type III].

p-value source prob > F	Sum of Squares	df	Mean Square	F Value	P Probability
Model <0.0001	14578.51	9	1619.83	65.45	<0.0001
A-initial concentration	2614.10	1	2614.10	105.62	<0.0001
0.0001 B-pH	3110.35	1	3110.35	125.67	<0.0001
C-contact time 0.0001	1404.50	1	1404.50	56.75	<0.0001
AB 0.0001	1482.25	1	1482.25	59.89	<0.0001
AC 0.0541	132.25	1	132.25	5.34	<0.0541
BC 0.0727	110.25	1	110.25	4.45	<0.0727
A2 0.0001	1615.50	1	1615.5	65.27	
B2 0.0001	2556.64	1	2556.64	103.29	
C2 0.0002	1259.03	1	1259.03	50.87	
Residual	173.26	7	24.75		
Lack of fit 0.1999	171.26	6	28.54	14.27	<0.1999
Pure error	2.00	1	2.00		
Cor Total	14751.76	16			
Std. Dev. 0.9883		4.98		R-Squared	
Mean 0.9732		52.88		Adj R-Squared	
C.V. % 0.9174		9.41		Pred R-Squared	
Press		1219.09		Adeq Precision	21.296

Table 6. Analysis of variance for fluoride adsorption rate onto LLD-2.

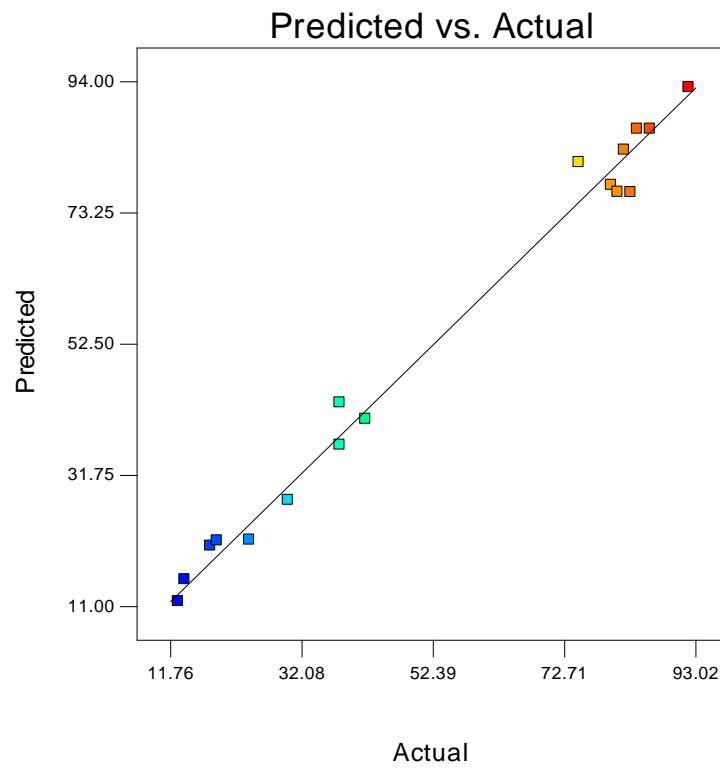
p-value source prob > F	Sum of Squares	df	Mean Square	F Value	P Probability
Model	6387.32	9	709.70	248.87	<0.0001
A-initial concentration <0.0001	668.52	1	668.52	243.43	<0.0001
B-contact time <0.0001	1891.13	1	1891.31	663.15	<0.0001
C-temp <0.0001	1081.13	1	1081.13	379.11	<0.0001
AB 2.25	1	2.25	0.79	0.4039	
AC 56.25	1	56.25	19.72	0.0030	
BC 441.00	1	441.00	154.64	<0.0001	
A2 30.81	1	30.81	10.80	0.0134	
C2 242.37	1	242.37	84.99	<0.0001	
Residual	19.96	7	2.85		
Lack of fit 0.1999	71.20	4	4.30	4.67	0.1182
Pure error	2.76	3	4.30		
Cor Total	6407.28	16			
Std. Dev. 0.9969		4.98		R-Squared	
Mean 0.9929		57.46		Adj R-Squared	
C.V. % 0.9641		2.94		Pred R-Squared	
Press		230.16		Adeq Precision	46.152

Table 7. Analysis of variance for fluoride adsorption rate onto LLD-3.

p-value source prob > F	Sum of Squares	df	Mean Square	F Value	P Probability
Model <0.0001	2784.73	14	198.91	209.93	<0.0001
A-initial concentration <0.0001	802.32	1	802.32	846.76	<0.0001
B-pH <0.0001	111.93	1	111.93	118.13	<0.0001
C-temp <0.0001	247.45	1	247.45	261.16	<0.0001
D-contact time <0.0001	101.12	1	101.12	106.72	<0.0001
AB 0.0002	25.00	1	25.00	26.38	
AC 0.0591	4	1	4	4.22	0.0591
AD 0.0051	10.42	1	10.42	10.99	0.0051
BC 0.1637	2.05	1	2.05	2.16	0.1637
BD <0.0001	210.25	1	210.25	221.9	<0.0001
CD 0.3217	1.00	1	1.00	1.06	0.3217
A2 <0.0001	167.86	1	167.86	177.16	<0.0001
B ² <0.0001	443.06	1	443.06	464.00	<0.0001
C2 <0.0001	42.77	1	42.77	45.14	<0.0001
D ² <0.0001	49.50	1	49.50	52.24	<0.0001
Residual	13.27	14	0.95		
Lack of fit 0.0412	12.52	10	1.25	6.67	0.0412
Pure error	0.75	4	0.19		
Cor Total	2798.00	28			
Std. Dev. 0.9953		0.97		R-Squared	0.9953
Mean 0.9905		75.00		Adj R-Squared	0.9905
C.V. % 0.9695		1.30		Pred R-Squared	0.9695
Press		85.23		Adeq Precision	50.456

Design-Expert® Software
removal

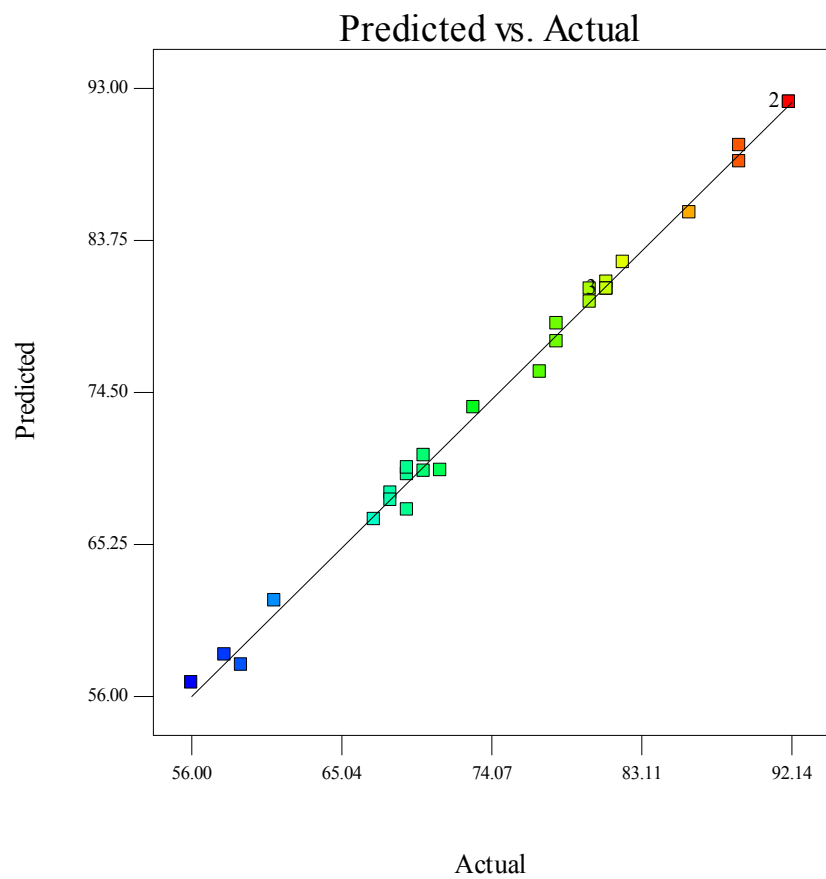
Color points by value of
removal:



(a)

Design-Expert® Software
Removal

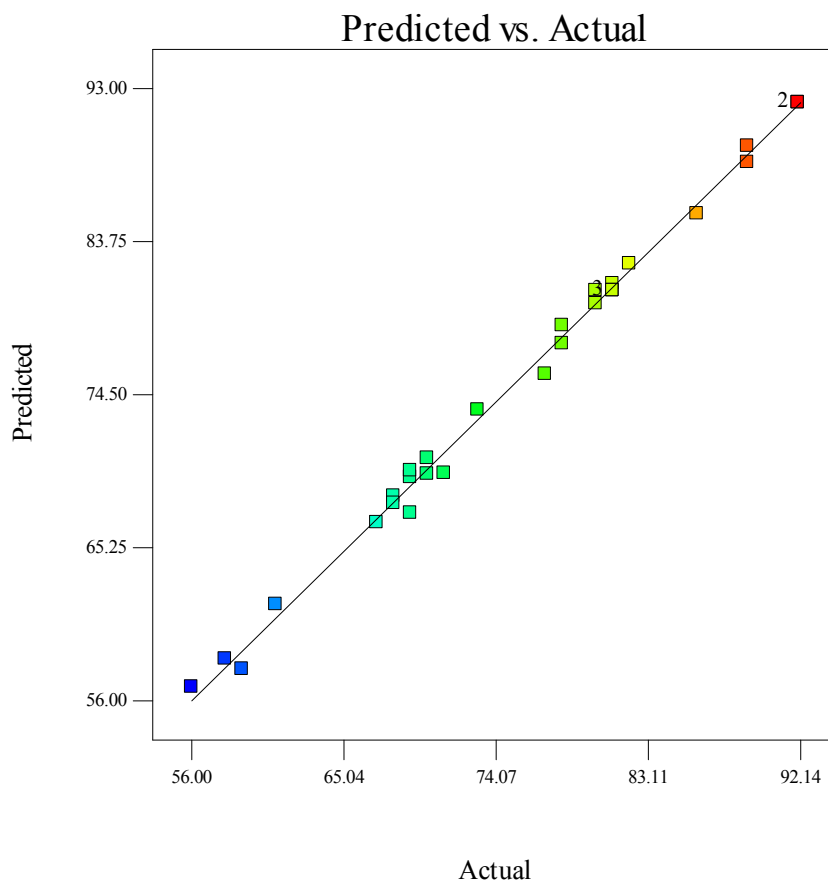
Color points by value of
Removal:



(b)

Design-Expert® Software
Removal

Color points by value of
Removal:



(c)

Figure 10. The plot of predicted versus actual values for fluoride adsorption rate onto (a) LLD-1, (b) LLD-2, (c) LLD-3.

LLD-3 are 65.45, 248.87 and 209.93 respectively which imply the model is significant. There is only 0.01% of chance that a “model F value” this large could occur due to noise. The values of “prob > F” less than 0.05 indicate model terms are significant, where values greater than 0.1 direct the model terms are not significant.

4.11. Optimization of Process Variables

The numerical optimization was applied to optimize the fluoride adsorption process and the optimum values of various parameters are provided in **Table 8**. A desirability value of 1.0 was obtained after optimizing the process parameters.

5. Conclusion

This work investigated the adsorption of fluoride onto LLD-1, LLD-2 and LLD-3. Experiments were made as a function of different adsorption parameters (pH, initial fluoride concentration, adsorbent dose, contact time and stirring rate and temperature). Response surface methodology by the Box-Behnken model was used to examine the role of three process factors on fluoride removal. It

was shown that a second-order polynomial regression model could properly interpret the experimental data with coefficient of determination (R^2) value of 0.9969 and an F value of 248.87. The simultaneous optimization of the multiresponse system by desirability function indicated that 92.74%, 92.52%, 92.24% adsorption of fluoride can be possible by using the optimal conditions of pH, initial fluoride concentration, contact time and temperature. The Langmuir, Freundlich, D-R and Tempkin isotherm models were used for the description of fluoride adsorption phenomenon. The data were good agreement with both Langmuir and D-R isotherms. The kinetics of fluoride adsorption was controlled by pseudo-second order kinetic model for all the tested adsorbents. However, LLD-1 also showed the agreement with intra-particle diffusion model. The adsorptions of fluoride onto LLD-1, LLD-2 and LLD-3 were found to be exothermic in nature. This study shows that the Box-Behnken model is suitable to optimize the experiments for fluoride removal through adsorption.

6. Acknowledgements

Authors express their sincere thanks to Professor J K

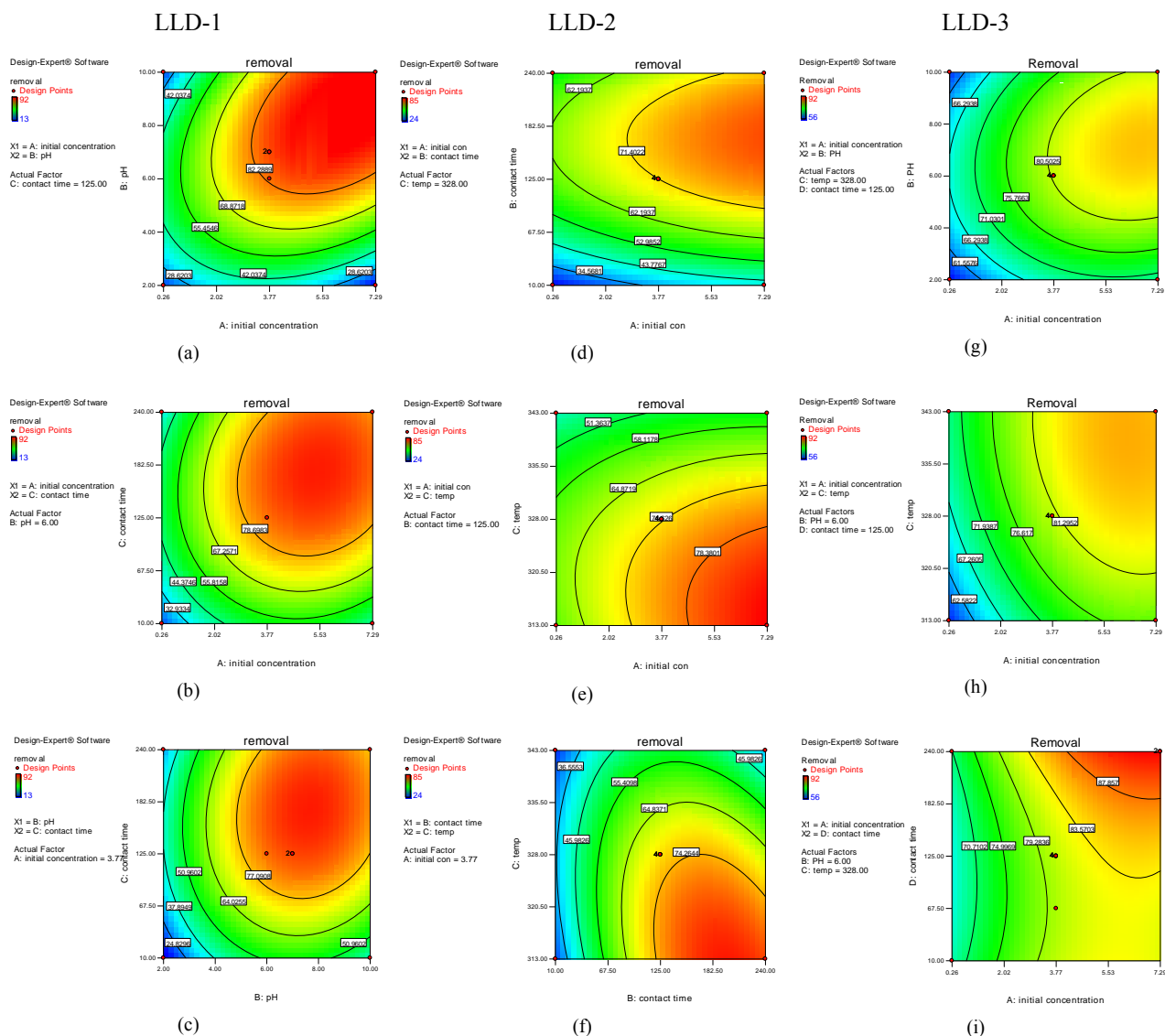


Figure 11. The effects of (a) and (g) solution pH and initial fluoride concentration, (b) and (d) and (i) contact time and initial fluoride concentration, (c) contact time and pH, (e) and (h) temperature and initial fluoride concentration, (f) temperature and contact time.

Table 8. The optimum values of the experimental parameters.

Parameters	LLD-1	LLD-2	LLD-3
pH	6.15	-	7.34
Contact time (min)	143.73	45.97	203.47
Initial concentration (mg/L)	6.03	2.94	6.66
Temperature (K)	-	328.09	336.10
Adsorption	92.74	92.52	92.24

Datta for his encouragement and active support of doing such laborious work. Authors also like to express their gratitude.

REFERENCES

- [1] V. Sivasankar, S. Muruges, S. Rajkumar and A. Darchen, "Cerium Dispersed in Carbon (CeDC) and Its Adsorption Behavior: A First Example of Tailored Adsorbent for Fluoride Removal from Drinking Water," *Chemical Engineering Journal*, Vol. 214, 2013, pp. 45-54. [doi:10.1016/j.cej.2012.10.023](https://doi.org/10.1016/j.cej.2012.10.023)
- [2] WHO, "Guidelines for Drinking Water Quality," World Health Organization, Geneva, 2006.
- [3] S. Ayoob and A. K. Gupta, "Fluoride in Drinking Water a Review on the Status and Stress Effects," *Critical Reviews in environmental Science and Technology*, Vol. 36, No. 6, 2006, pp. 433-487. [doi:10.1080/10643380600678112](https://doi.org/10.1080/10643380600678112)
- [4] M. H. Trivedi, R. J. Verma and N. J. Chinoy, "Effect of High Fluoride Water on Intelligence of School Children in India," *Fluoride*, Vol. 40, No. 3, 2007, pp. 178-183.
- [5] A. J. Arulanantham, T. V. Ramakrishna and N. Balasubramaniam, "Studies on Fluoride Removal by Coconut Shell Carbon," *Indian Journal of Environmental Health*, Vol. 13, No. 5, 1992, pp. 531-536.
- [6] S. Kumar, A. Gupta and J. P. Yadav, "Fluoride Removal by Mixtures of Activated Carbon from Neem (Azadirachta) and Kikar (Acacia Arabica) Leaves," *Indian Journal of Chemical Technology*, Vol. 14, No. 4, 2007, pp. 355-361.
- [7] G. Alagumuthu, V. Veeraputhiran and R. Venkataraman, "Adsorption Isotherms on Fluoride Removal Batch Techniques," *Archives of Applied Science Research*, Vol. 2, No. 4, 2010, pp. 170-185.
- [8] S. Chakrabarty and H. P. Sarma, "Defluoridation of Contaminated Drinking Water Using Neem Charcoal Adsorbent: Kinetics and Equilibrium Studies," *International Journal of ChemTech Research*, Vol. 4, 2012, pp. 511-516.
- [9] C. Gisele, S. Bazanella, G. F. Silva, A. M. Vieira and R. Bergamasco, "Fluoride Removal from Water Using Combined *Moringa oleifera*/Ultrafiltration Process," *Water, Air, and Soil Pollution*, Vol. 223, No. 9, 2012, pp. 6083-6093.
- [10] C. J. Atkinson, "The Flux and Distribution of Xylem Sap Calcium to Adaxial and Abaxial Epidermal Tissue in Relation to Stomatal Behavior," *Journal of Experimental Botany*, Vol. 42, 1991, pp. 987-993. [doi:10.1093/jxb/42.8.987](https://doi.org/10.1093/jxb/42.8.987)
- [11] M. Mourabet, A. El. Rhilassi, H. El. Boujaady, M. Ben-nani-Ziatni, R. El. Hamri and A. Taitai, "Removal Of-fluoride from Aqueous Solution by Adsorption on Apatitic Tricalcium Phosphate Using Bix-Behnken Design and Desirability Function," *Applied Water Science*, Vol. 258, 2012, pp. 4402-4410.
- [12] Y. LiuZheng and A. Wang, "Response Surface Methodology for Optimizing Adsorption Process Parameters for Methylene Blue by a Hydrogel Composite," *Adsorption Science and Technology*, Vol. 28, No. 10, 2010, pp. 913-921. [doi:10.1260/0263-6174.28.10.913](https://doi.org/10.1260/0263-6174.28.10.913)
- [13] V. Hernández-Montoyaa, L. A. Ramírez-Montoya, A. Bonilla-Petriciolet and M. A. Montes-Moránb, "Optimizing the Removal of Fluoride from Water Using New Carbons Obtained by Modification of Nut Shell with a Calcium Solution from Egg Shell," *Biochemical Engineering Journal*, Vol. 62, 2012, pp. 1-7. [doi:10.1016/j.bej.2011.12.011](https://doi.org/10.1016/j.bej.2011.12.011)
- [14] M. K. Mondal, "Removal of Pb (II) from Aqueous Solution by Adsorption Using Activated Tea Waste," *Korean Journal of Chemical Engineering*, Vol. 27, No. 1, 2010, pp. 144-151. [doi:10.1007/s11814-009-0304-6](https://doi.org/10.1007/s11814-009-0304-6)
- [15] A. K. Yadav, R. Abbassi and A. Gupta and M. Dadash-zadeh, "Removal of Fluoride from Aqueous Solution and Groundwater by Wheat Straw, Saw Dust and Activated Carbon of Sugarcane," *Ecological Engineering*, Vol. 52, 2013, pp. 211-218. [doi:10.1016/j.ecoleng.2012.12.069](https://doi.org/10.1016/j.ecoleng.2012.12.069)
- [16] O. Genc, Y. Yalcinkaya, E. Buyuktuncel, A. Denizli, M. Y. Arica and S. Bektas, "Uranium Recovery by Immobilized and Dried Powdered Biomass, Characterization and Comparison," *International J of Mineralogy Process*, Vol. 68, 2003, pp. 93-107. [doi:10.1016/S0301-7516\(02\)00062-5](https://doi.org/10.1016/S0301-7516(02)00062-5)
- [17] S. V. Mohan and J. Karthikeyan, "Removal of Lignin and Tannin Aqueous Solution by Adsorption onto Activated Charcoal," *Environmental Pollution*, Vol. 97, 1997, pp. 183-197. [doi:10.1016/S0269-7491\(97\)00025-0](https://doi.org/10.1016/S0269-7491(97)00025-0)
- [18] T. Ilhami, B. Gulay, Y. Emine and B. Gokben, "Equilibrium and Kinetic Studies on Biosorption of Hg(II), Cd(II) and Pb(II) Ions onto Micro Algae Chlamydomonas-reinhardtii," *Journal of Environmental Management*, Vol. 77, No. 2, 2005, pp. 85-92. [doi:10.1016/j.jenvman.2005.01.028](https://doi.org/10.1016/j.jenvman.2005.01.028)
- [19] S. Panumati, K. Chudecha, P. Vankhaew, V. Choolert, L. Chuenchom, W. Innajitara and O. Sirichote, "Adsorption of Phenol from Diluted Aqueous Solutions by Activated Carbons Obtained from Bagasse, Oil Palm Shell and Pericarp of Rubber Fruit," *Songklanakarin Journal of Science & Technology*, Vol. 30, No. 2, 2008, pp. 185-189.
- [20] M. Murugan and E. Subremanian, "Studies on Defluoridation of Water by Tamarindseed, an Unconventional Biosorbent," *Journal of Water and Health*, Vol. 4, No. 4, 2006, pp. 453-461.
- [21] R. Bhaumik, N. K. Mondal, B. Das, P. Roy, K. C. Pal, C. Das, A. Banerjee and J. K. datta, "Eggshell Powder as an Adsorbent for Removal of Fluoride from Aqueous solution : Equilibrium, Kinetic and Thermodynamic Studies," *E-Journal of Chemistry*, Vol. 9, 2012, pp. 1457-1480. [doi:10.1155/2012/790401](https://doi.org/10.1155/2012/790401)
- [22] D. J. Killedar and D. S. Bhargava, "Effects of Stirring Rate Temperature on Luoride Removal by Fishbone Charcoal," *International Journal of Occupational and Environmental Health*, Vol. 35, No. 2, pp. 1993, pp. 81-87.
- [23] S. V. Ramanaiah, S. V. Mohan, B. Rajkumar and P. N. Sarma, "Monitoring of Fluoride Concentration in Ground Water of Prakasham District in India: Correlation with Physic-Chemical Parameters," *Journal of Environmental*

- Science and Engineering*, Vol. 48, 2006, pp. 129-134.
- [24] A. R. Tembhurkar and S. Dongre, "Studies on Fluoride Removal Using Adsorption process," *Journal of Environmental Health Science and Engineering*, Vol. 48, No. 3, 2006, pp. 151-156.