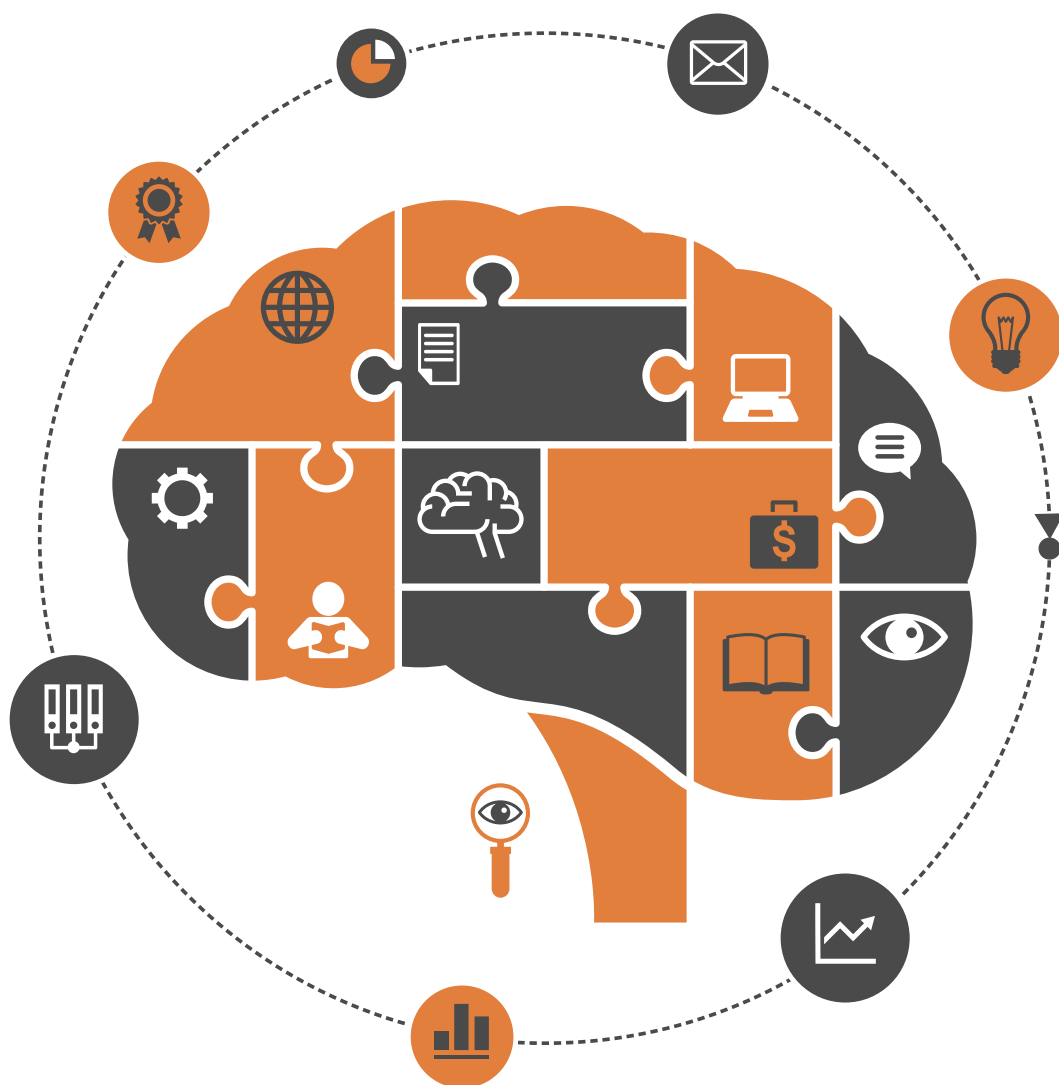


ISSN: 2152-7180

Volume 7, Number 8, July 2016



Psychology



ISSN: 2152-7180



www.scirp.org/journal/psych

Journal Editorial Board

ISSN Print: 2152-7180 ISSN Online: 2152-7199

<http://www.scirp.org/journal/psych>

Editor-in-Chief

Prof. Peter Walla

University of Newcastle, Australia

Editorial Board

Dr. Ruggero Andrisano-Ruggieri

University of Salerno, Italy

Dr. Yoram Bar-Tal

Tel-Aviv University, Israel

Prof. Adital Ben-Ari

University of Haifa, Israel

Dr. Sefa Bulut

Abant Izzet Baysal University, Turkey

Dr. Matthew C. Costello

Indiana University South Bend, USA

Dr. Jay R. Elliott

Yale University, USA

Dr. Thomas Vincent Frederick

California Baptist University, USA

Prof. Jay Friedenberg

Manhattan College, USA

Dr. George Kyriacou Georgiou

University of Alberta, Canada

Dr. David M. Goodman

Harvard Medical School, USA

Dr. Hong Jiao

University of Maryland, USA

Dr. Michelle Y. Kibby

Southern Illinois University, USA

Prof. Kenneth A. Kiewra

University of Nebraska-Lincoln, USA

Prof. Beth Kurtz-Costes

University of North Carolina, USA

Dr. Giovanni Laviola

Italian National Institute of Health, Italy

Dr. Katerina Maniadaki

Technological Educational Institution, Greece

Prof. Tim F. McLaughlin

Gonzaga University, USA

Dr. John T. Mitchell

Duke University, USA

Dr. Melodee Mograss

McGill University, Canada

Dr. Ora Nakash

Interdisciplinary Center (IDC) Herzliya, Israel

Dr. Raffaella Nori

University of Bologna, Italy

Dr. Jennifer Kim Plybon Penberthy

University of Virginia School of Medicine, USA

Dr. So-Jung Seo

Kyung Hee University, South Korea

Prof. Tuomo Antero Takala

University of Jyväskylä, Finland

Dr. Massimiliano Versace

Boston University, USA

Prof. Edda Weigand

University of Münster, Germany

Dr. Berney J. Wilkinson

Webster International University, USA

Dr. Patricia Gail Williams

University of Louisville, USA

Dr. Hui-Ching Wu

National Taiwan University, Chinese Taipei

Dr. Wengang Yin

Chinese Academy of Sciences, China

Table of Contents

Volume 7 Number 8

July 2016

Gender and Personality Differences in the Self-Estimated Intelligence of Koreans

W. Kang, A. Furnham.....1043

Prevalence of Truancy and Its Associated Factors among School-Going Malaysian Adolescents: Data from Global School-Based Health Survey 2012

N. Yoep, L. Tupang, A. N. Jai, L. K. Kuay, F. Paiwai, N. S. M. Nor.....1053

Attachment and Academic Classroom Behavior: Self-Efficacy and Procrastination as Moderators on the Influence of Attachment on Academic Success

R. M. Kurland, H. I. Siegel.....1061

Effects of Guilt, Disbelief, and Assessed Lie-Truth Telling Abilities on Physiological Responses in the Guilty Action Test

E. Elaad, E. Sommerfeld.....1075

Is the Social Integration Possible? The Role of Training among Young Adults Beneficiaries of Social Services Institutions

M. Farnicka.....1092

Psychological Nutrition

A. Pimentel.....1104

Transition Daze: A Qualitative Analysis of Transition Days in Blended Families

C. Perry-Fraser, R. Fraser.....1110

The Relationship between Happiness and Self-Awareness among Introverts and Extroverts

M. Bagherian, A. K. Mojembari, P. Naghibian, S. F. Nik.....1119

Internet Addiction Disorder and Its Pathogenicity to Psychological Distress and Depression among University Students: A Cross-Sectional Pilot Study in Bangladesh

Md. S. Uddin, A. A. Mamun, M. A. Iqbal, Md. Nasrullah, Md. Asaduzzaman,
Md. S. Sarwar, Md. S. Amran.....1126

The Implications of the Conflict between Work and Family in Strain Levels: A Review Paper

D.-E. Ioannidi, I. Nikolatou, E. Sioula, M. Galanakis, G. P. Chrousos, C. Darviri.....1138

Counselling and Psychotherapy Orientations in Australia: Responses from 24 Australian Psychotherapists

R. E. Hicks, V. Alexander, C. M. Jones.....1146

**Analyzing the Effectiveness of Simulation in Promoting Learner Autonomy:
Perceptions of ESP Hotel Management Students**

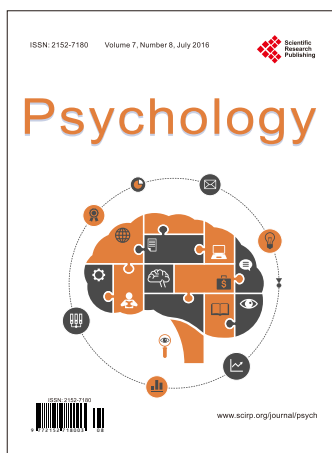
S. F. Jilani, M. Yasmin.....1154

The Effects of a Health-Based Context on Memory for Advertisements

S. Mahdi, A. Furnham.....1163

**Self-Esteem, Self-Stigma, and Stigmatization among People with Mental Illness in
Japan Who Have Work Experience**

H. Yoshii, K. Akazawa, H. Saito.....1174



Call for Papers

Psychology (PSYCH)

ISSN Print: 2152-7180 ISSN Online: 2152-7199

<http://www.scirp.org/journal/psych>

PSYCH is an international refereed journal dedicated to the latest advancement of Psychology. The goal of this journal is to keep a record of the state-of-the-art research and promote the research work in these fast moving areas.

Subject Coverage

This journal invites original research and review papers that address the following issues in Psychology. Topics of interest include, but are not limited to:

Behavioral Psychology	Military Psychology
Biological Basis of Behavior	National Psychology
Clinical Psychology	Neuropsychology
Cognitive Psychology	Others
Counseling Psychology	Political Psychology
Cultural Psychology	Professional Practice
Economic Psychology	Psychological Assessment and Evaluation
Educational Psychology	Psychology of Art
Engineering Psychology	Psychology of Religion
Environmental Psychology	Psychotherapy
Ethics in Psychology	Safety Psychology
Family Psychology and Couples Psychology	School Psychology
Forensic Psychology	Scientific Psychology
Gerontology	Social Psychology
Health Psychology	Sport Psychology
Intelligence Psychology	Traffic Psychology
Managerial and Leadership Psychology	Work, Industrial and Organizational Psychology

We are also interested in short papers (letters) that clearly address a specific problem, and short survey or position papers that sketch the results or problems on a specific topic. Authors of selected short papers would be invited to write a regular paper on the same topic for future issues of the **PSYCH**.

Notes for Intending Authors

Submitted papers should not have been previously published nor be currently under consideration for publication elsewhere. Paper submission will be handled electronically through the website. All papers are refereed through a peer review process. For more details about the submissions, please access the website.

Website and E-Mail

<http://www.scirp.org/journal/psych>

E-mail: psych@scirp.org

What is SCIRP?

Scientific Research Publishing (SCIRP) is one of the largest Open Access journal publishers. It is currently publishing more than 200 open access, online, peer-reviewed journals covering a wide range of academic disciplines. SCIRP serves the worldwide academic communities and contributes to the progress and application of science with its publication.

What is Open Access?

All original research papers published by SCIRP are made freely and permanently accessible online immediately upon publication. To be able to provide open access journals, SCIRP defrays operation costs from authors and subscription charges only for its printed version. Open access publishing allows an immediate, worldwide, barrier-free, open access to the full text of research papers, which is in the best interests of the scientific community.

- High visibility for maximum global exposure with open access publishing model
- Rigorous peer review of research papers
- Prompt faster publication with less cost
- Guaranteed targeted, multidisciplinary audience



Website: <http://www.scirp.org>

Subscription: sub@scirp.org

Advertisement: service@scirp.org