

CYP2C19 (+ or -)*2/(+ or -)*17 Diplotypes: Prognostic impact on patients with acute coronary syndrome

Rogério Teixeira^{1,2*}, Manuela Grazina³, Pedro Monteiro^{1,2}, Francisco Soares¹, Margarida Lourenço⁴, Guilherme Pêgo¹

¹Service of Cardiology, Central Hospital of University of Coimbra, Coimbra, Portugal

²Faculty of Medical University of Coimbra, Coimbra, Portugal

³Laboratory of Biophysical Genetics, Central of Neuroscience and Biologic Celular, Faculty of Medical University of Coimbra, Coimbra, Portugal

⁴Service of pathology Clinic, Central hospital of University of Coimbra, Coimbra, Portugal

Email: *rogeriopteixeira@gmail.com

Received 23 August 2012; revised 26 September 2012; accepted 6 October 2012

ABSTRACT

Purpose: To investigate the prognostic impacts of a combined clopidogrel-metabolizing genotypes CYP 2C19 (+ or -)*2/(+ or -)*17 on patients with acute coronary syndrome (ACS). **Population and methods:** Prospective, longitudinal study of 95 patients admitted for ACS to a single coronary care unit. Patients less than 75 years of age, who survived hospitalization and to whom clopidogrel was prescribed, were included. CYP2C19 genotyping was performed at discharge. For analysis, the patients were grouped as follows: Group A ([+]*2/[+]*17) n = 8; Group B ([+]*2/[-]*17) n = 18; Group C ([-]*2/[+]*17) n = 27; and Group D ([-]*2/[-]*17) n = 42. Platelet function was assessed by an ADP platelet aggregation test using a commercially available kit. The primary endpoint was a composite of mortality or readmission for ACS. The median time of follow-up was 136.0 (79.0 – 188.0) days. **Results:** The mean age of the study patients was 59.9 ± 10.7 years, and 83.2% were male. The allele frequencies of CYP2C19*2 and CYP2C19 *17 were 14.2% and 20%, respectively. Both allele frequencies were in Hardy Weinberg equilibrium. The patient groups were homogenous for demographic data, cardiovascular risk factors, GRACE and CRUSADE bleeding scores, left ventricular ejection fraction, and coronary anatomy. ADP platelet aggregation was similar for all groups (respective rates for groups A, B, C, D were 17.5 U (10.3 – 18.7) vs 20.0 U (17.3 – 26.8) vs 16 U (12 – 19) vs 12 U (8 – 22), p = 0.4). Event-free survival was significantly lower for group B (respective rates for Groups A, B, C, D were 87.5% vs 68.8% vs 96.3% vs 92.5%; p = 0.02). By multivariate Cox regression analysis, the CYP2C19 (+)*2/(-)*17

diplotype was an independent predictor of outcome, conferring a 5.2-fold higher adjusted risk for the composite endpoint than the others diplotypes. **Conclusion:** In our study, patients with the intermediate plus non-ultrarapid clopidogrel-metabolizing genotype ([+]*2/[-]*17) had a significantly poor medium-term prognosis for ischemic events, compared with the other diplotypes.

Keywords: CYP2C19*2/CYP2C19*17 Combination; Clopidogrel; Acute Coronary Syndrome; Prognosis

1. INTRODUCTION

Clopidogrel, a second-generation thienopyridine, is a pro-drug that requires enzymatic biotransformation into its active thiol metabolite before interacting with the P2Y12 receptor on platelets. Pharmacokinetic, pharmacodynamic, and genetic studies have provided abundant evidence that *in vivo* bioactivation of clopidogrel is a two-step process involving the cytochrome P450 (CYP) system. The isoenzyme CYP2C19 was found to play a major role, because it contributes to both clopidogrel bioactivation steps [1].

A common genetic variant within the CYP2C19 gene, the CYP2C19*2 loss-of-function polymorphism, was found to be associated with an attenuated response to clopidogrel [2-5], which resulted in worse clinical outcomes for patients undergoing coronary stenting [6,7] or with acute myocardial infarction (AMI) [8]. Poor prognosis was also demonstrated in a genome-wide association study [9] and in randomized clinical trials [10]. Although a 2012 meta-analysis questioned the relevance of the CYP2C19 loss-of-function alleles in the prediction of major cardiovascular events beyond stent thrombosis [11] a previous 2010 collaborative meta-analysis demon-

*Corresponding author.

strated significant association between carriage of the *CYP2C19*2* allele and ischemic events [12].

The recently discovered allelic variant *CYP2C19*17* results in increased *CYP2C19* enzyme activity because of the mutation (−806 C > T) in the 5' flanking region of the gene, which causes increased transcription of the enzyme [13]. Carriage of *CYP2C19*17* was significantly associated with enhanced response to clopidogrel and an increased risk of bleeding in the context of percutaneous coronary intervention [14], but was also found to confer protection against ischemic events in patients after AMIs [15]. Moreover, it has also been reported that combinations of the alleles *CYP2C19*2* and *CYP2C19*17* have significant effects on platelet aggregation [3], although there have been no reports on prognosis regarding ischemic events after an AMI. We therefore undertook a study of patients carrying combinations of *CYP2C19*2* and *CYP2C19*17* variant alleles, to determine medium-term outcomes after an acute coronary syndrome (ACS).

2. MATERIAL AND METHODS

2.1. Study Design and Eligibility

This was a prospective longitudinal selection of 220 consecutive patients admitted for an ACS between April and October 2009, who survived hospitalization. Eligible patients were younger than 75 years of age and were prescribed clopidogrel (75 mg/day) and acetylsalicylic acid (100 mg/day) at discharge.

Patients were excluded if they were immediately referred to surgery, or if they were enrolled in 2 other clinical trials investigating antiplatelet therapy: The TRA•CER (Trial to Assess the Effects of SCH 530348 in Preventing Heart Attack and Stroke in Patients With Acute Coronary Syndrome—ClinicalTrials.gov identifier: NCT00527943) [16] and the TRILOGY ACS (A Comparison of Prasugrel and Clopidogrel in Acute Coronary Syndrome Subjects—ClinicalTrials.gov identifier: NCT006-99998) [17].

The initial study population included 220 patients. In-hospital mortality was 3.6% (8 patients), and 78 patients were excluded because they were older than 75 years. During the study period, 24 patients were randomized to TRA•CER and 5 to TRILOGY ACS. In addition, 10 patients were immediately referred to surgery. The final study population included 95 patients. The institutional Ethics Committee approved the research protocol, and informed consent was obtained from the study participants.

For analysis, the patients were divided into 4 groups according to the *CYP2C19*2* and *CYP2C19*17* genotyped combination:

1) Group A ([+]*2/[+]*17): Intermediate plus ultra-

rapid metabolizers;

2) Group B ([+]*2/[−]*17): Intermediate plus non-ultrarapid metabolizers;

3) Group C ([−]*2/[+]*17): Non-intermediate plus ultrarapid metabolizers;

4) Group D ([−]*2/[−]*17): Non-intermediate plus non-ultrarapid metabolizers.

The phenotypic assignment presented was in accordance to the clinical pharmacogenetics guideline for cytochrome P450-2C19 genotype and clopidogrel therapy [18].

Because there was a low number of homozygous patients, 1 patient with *CYP2C19*2* and 3 patients with *CYP2C19*17*, they were included in the heterozygous Groups B and C, respectively, for analysis.

AMI was diagnosed based on the universal definition of myocardial infarction as follows: 1) Positive for cardiac biomarker (troponin I) with symptoms of ischemia or 2) ECG changes indicating new ischemia (ST segment and T wave changes and new bundle branch block) [19]. ST-elevation AMI was defined by a new onset ST elevation ≥ 0.2 mV for men and ≥ 0.1 mV for women in V2-V3, and ≥ 0.1 mV in other leads. Non-ST elevation AMI, in addition to the previously specified laboratory and clinical criteria, may be associated with or without ECG-associated ischemic changes, such as ST depression or T wave inversion [19].

Unstable angina was defined either by new-onset angina (at least class III Canadian Cardiovascular Society [CCS]); progressive angina; or angina at rest, with or without ECG ischemic changes; plus a negative cardiac biomarker assay [20].

The decision to allocate patients to an invasive or conservative management was performed by the cardiologists at the coronary care unit. A stress test was performed in a third of the patients.

A 300 mg clopidogrel loading dose was administered in the emergency department to patients with non-ST-elevation ACS, and a 600 mg dose was administered to patients with ST-elevation ACS. The subsequent daily and discharge dose of clopidogrel was 75 mg administered at 8 AM. Acetylsalicylic acid was administered at a loading dose of 300 mg, and the subsequent daily dose was 100 mg every day 4 hours after clopidogrel.

Platelet function testing was performed at discharge using multiple electrode aggregometry (MEA) (Multiplate Analyzer®, Dynabyte, Munich, Germany). MEA was assessed using whole blood, according to the principles of aggregometry; ADP (6.4 μ mol/L) was used as the agonist and results were expressed in arbitrary units (U).

2.2. Genotyping

Genomic DNA was extracted by standard methods at

hospital discharge from peripheral blood leucocytes. Patients were genotyped retrospectively. *CYP2C19**1 (wild type) *CYP2C19**2 (c.681G>A; rs4244285) and *CYP2C19**3 (c.636G>A; rs4986893) alleles were identified using a dual-priming oligonucleotide polymerase chain reaction (PCR) assay from a commercially available kit (Seegene®). A real-time PCR assay was used to identify the *CYP2C19**17 allele (c.-806C>T; rs12248560), using a commercially available kit (Applied Bio systems®).

2.3. Baseline Data and Patient Follow Up

Admission data from patient records that included demographic, clinical, and laboratory information were analyzed. Information on medical therapy, catheterization, and discharge medication were also registered and analyzed.

Clinical follow up was performed over median of 136.0 (79.0 - 188.0) days after hospital discharge. Information was collected by phone calls to patients, from hospital records, or at the outpatient clinic. The primary endpoint used for analysis was a composite of cardiovascular death or readmission for ACS whichever came first. Clopidogrel compliance was confirmed during follow up.

2.4. Statistics

The Kolmogorov-Smirnov test was used to confirm that all continuous variables were normally distributed. Continuous data are presented as mean and standard deviation and groups were compared using analysis of variance (ANOVA) or the Student *t* test, when appropriate. Categorical variables are reported as frequencies and percentages, and the χ^2 or Fisher exact tests were used when appropriate. Chi square tables were used to compare the observed number of *CYP2C19* genotypes with that ex-

pected for a population in Hardy-Weinberg equilibrium.

Cumulative survival curves were constructed using the Kaplan-Meier method, and patient groups were compared using the log-rank test. The period of observation started at hospital discharge.

A multivariate Cox regression analysis was performed for the primary endpoint. Variables that were significant at the bivariate level (with a *p*-value < 0.05) and that had clinical relevance were included in the model.

The study had a calculated post-hoc power of 46.3% to identify differences between the groups regarding the primary endpoint on the follow up.

All statistical tests were two-tailed, and a *p*-value less than 0.05 was considered significant. The analysis was performed using SPSS 15 (*Statistical Package for Social Sciences*) from SPSS Inc®, Chicago, IL. The post-hoc power calculation was performed with G*Power 3.1.

3. RESULTS

The mean age of the study patients was 59.9 ± 10.7 years with male gender predominance (83.2%). All were Caucasian. The frequencies of the *CYP2C19**2 and *CYP2C19**17 alleles were 14.2% and 20.0%, respectively. No deviations from the expected proportions of genotypes in the population as predicted by the Hardy-Weinberg equilibrium equation were noted (*p* = 0.44 for *CYP2C19**2 and *p* = 0.61 for *CYP2C19**17). The *CYP2C19**3 variant alleles was not detected.

There were no significant differences between diplo-type groups regarding patient demographics, previous cardiovascular history, and risk factors. Group B had the lowest rate of non-ST elevation AMI as the admission diagnosis (respective rates for Groups A, B, C, D were 37.5% vs 11.1% vs 25.9% vs 50.0%; *p* = 0.02, **Table 1**).

Table 1. Baseline characteristics.

	Group A	Group B	Group C	Group D	P*	P**
Age (years)	61.3 ± 11.5	60.1 ± 10.3	60.6 ± 12.9	59.1 ± 9.3	0.93	0.93
Male gender (%)	7/8 (87.5)	14/18 (77.8)	24/27 (88.9)	34/42 (81.0)	0.74	0.50
STEMI (%)	4/8 (50.0)	7/18 (38.9)	14/27 (51.9)	11/42 (26.2)	0.16	0.92
NSTEMI (%)	3/8 (37.5)	2/18 (11.1)	7/27 (25.9)	21/42 (50.0)	0.02	0.02
UA (%)	1/8 (12.5)	9/18 (50.0)	6/27 (22.2)	10/42 (23.8)	0.10	0.02
Diabetes (%)	6/8 (75.0)	11/18 (61.1)	21/27 (77.8)	27/42 (64.3)	0.57	0.46
Dyslipidemia (%)	3/8 (37.5)	9/18 (50.0)	21/27 (77.8)	26/42 (61.9)	0.11	0.24
Hypertension (%)	6/8 (75.0)	12/18 (66.7)	21/27 (77.8)	34/42 (81.0)	0.70	0.26
Current Smoking (%)	1/8 (12.5)	6/18 (33.3)	3/27 (11.1)	9/42 (21.4)	0.30	0.12
Previous MI (%)	0/8 (0.0)	5/18 (27.8)	2/27 (7.4)	12/42 (28.6)	0.06	0.36
Previous PCI (%)	1/8 (12.5)	2/18 (11.1)	1/27 (3.7)	9/41 (22.0)	0.19	0.71

* All groups comparison; ** Group B vs rest population; Group A—([+]*2/[+]*17); Group B—([+]*2/[−]*17); Group C—([−]*2/[+]*17); Group D—([−]*2/[−]*17); STEMI—ST elevation acute myocardial infarction; NSTEMI—Non ST elevation acute myocardial infarction; UA—Unstable angina; MI—Myocardial infarction; PCI—Percutaneous coronary intervention.

Almost 75% of both sub-populations underwent invasive treatment. Patient groups had similar coronary anatomy, but Group B patients had the highest rate of stent placement (respective rates for Groups A, B, C, D were 42.9% vs 81.81% vs 81.0% vs 44.1%; $p = 0.02$). The groups were also similar with respect to ischemic and hemorrhagic risk assessments according to the Global Registry of Acute Coronary Events (GRACE), and the Can Rapid risk stratification of unstable angina patients Suppress adverse outcomes with early implementation of the ACC/AHA guidelines (CRUSADE) scores. Other variables such as left ventricular ejection fraction, peak troponin I levels, change in hemoglobin levels, and glomerular filtration rate were also similar for all groups. There were no significant differences in platelet function between patient groups, but Group A had a lower ADP platelet aggregation than Group B patients (respective values for Group A and B were 14.2 ± 4.2 vs 19.3 ± 6.5 U, $p = 0.03$, **Table 2**)

All patient groups received similar medical therapy during the first 24 hours of hospitalization and upon discharge (**Table 3**). Almost all of the patients were administered clopidogrel and acetylsalicylic acid during the first 24 hours of hospitalization. The most frequently used anticoagulant was enoxaparin. Statins, beta-blockers and ACE inhibitors were also administered at high rates during the first 24 hours and upon discharge.

Prognosis and Results of Multivariate Analysis

Follow-up data were available for 91 patients (4.2% lost on follow-up). During follow up, there were 10 primary endpoints. One patient died, 6 had new nonfatal myocardial infarctions, and 3 were readmitted for unstable angina. Group B had the lowest event-free-survival rate (respective rates for Groups A, B, C, D were 87.5% vs 68.8% vs 96.3% vs 92.5%; log rank $p < 0.02$, **Figures 1-2**). After adjusting for covariates, the *CYP2C19*(+)*2/(−)*17 diplotype was an independent predictor of outcome. It conferred a 5.2-fold higher adjusted risk for occurrence of the composite endpoint compared to the other diplotypes (**Table 4**).

4. DISCUSSION

The results of our study suggest that the diplotype combination *CYP2C19**2 (intermediate clopidogrel metabolizer) and *CYP2C19**17 (ultrarapid clopidogrel metabolizer) has prognostic significance over the medium term after an ACS. The patients with the diplotype *CYP2C19*(+)*2/(−)*17 (intermediate and non-ultrarapid metabolizers) had higher risk for ischemic events following discharge compared to patients with the other diplotypes *CYP2C19*(+)*2/(+)*17 (intermediate and ultrarapid metabolizers), *CYP2C19*(−)*2/(−)*17 (non-intermediate and non-ultrarapid metabolizers), and *CYP2C19*(−)*2/(+)*17

Table 2. Risk assessment, management and laboratory data.

	Group A	Group B	Group C	Group D	P*	P**
Hospital stay (days)	4.8 ± 2.3	4.8 ± 1.8	4.5 ± 1.4	4.4 ± 1.7	0.81	0.42
Risk assessment						
GRACE score	127.0 ± 31.5	109.0 ± 26.8	113.9 ± 28.1	117.7 ± 22.4	0.52	0.28
Crusade score	20.6 ± 11.0	18.1 ± 14.6	20.0 ± 11.7	20.9 ± 12.3	0.89	0.47
LVEF (%)	62.4 ± 9.8	63.5 ± 14.1	62.1 ± 13.5	59.9 ± 15.8	0.88	0.57
Cath lab data						
Invasive strategy (%)	7/8 (87.5)	11/18 (61.1)	21/27 (77.8)	34/42 (81.0)	0.33	0.08
One vessel disease (%)	4/7 (57.1)	6/11 (54.5)	9/21 (42.9)	13/34 (38.2)	0.69	0.44
Multivessel disease (%)	2/7 (28.6)	4/11 (36.4)	9/21 (42.9)	14/34 (41.2)	0.91	0.81
Stent (%)	3/7 (42.9)	9/11 (81.8)	17/21 (81.0)	15/34 (44.1)	0.02	0.11
Laboratory data						
Peak Troponin I (U/l)	16.2 ± 22.5	10.2 ± 17.3	30.1 ± 41.0	21.2 ± 63.8	0.60	0.29
Peak CRP (mg/dl)	2.5 ± 2.3	2.9 ± 4.4	4.3 ± 5.3	4.2 ± 4.7	0.62	0.34
Total cholesterol (mg/dl)	207.9 ± 60.1	196.4 ± 53.2	191.2 ± 46.9	189.6 ± 50.0	0.81	0.75
LDL cholesterol (mg/dl)	149.0 ± 45.8	133.7 ± 43.7	127.0 ± 37.3	128.6 ± 34.6	0.56	0.72
GFR (ml/min)	82.4 ± 30.4	98.2 ± 31.6	95.2 ± 40.0	100.0 ± 36.1	0.65	0.84
Hg variation (%)	9.2 ± 9.3	7.9 ± 11.7	5.9 ± 5.5	6.6 ± 6.2	0.10	0.55
Platelets variations (%)	17.7 ± 13.6	9.5 ± 11.8	10.8 ± 11.1	7.5 ± 8.5	0.70	0.91
ADP platelet aggregation (U)	14.2 ± 4.2***	19.3 ± 6.5	18.9 ± 6.5	18.9 ± 8.5	0.40	0.41

*All groups comparison; **Group B vs rest population; ***P value 0.03 for comparison with Group B; Group A—([+]*2/[+]*17); Group B—([+]*2/[−]*17); Group C—([−]*2/[+]*17); Group D—([−]*2/[−]*17); GRACE—Global registry of acute coronary events; CRUSADE—Can rapid risk stratification of unstable angina patients suppress adverse outcomes with early implementation of the ACC/AHA guidelines; LVEF—Left ventricular ejection fraction; CRP—C reactive protein; GFR—Glomerular filtration rate; Hg—Hemoglobin.

Table 3. Medical therapy.

	Group A	Group B	Group C	Group D	P*	P**
At 24 hours						
Aspirin (%)	8/8 (100)	17/18 (94.4)	27/27 (100)	41/42 (97.6)	0.61	0.26
Clopidogrel (%)	8/8 (100)	18/18 (100)	27/27 (100)	41/42 (97.6)	0.74	0.63
LMWH (%)	7/8 (87.5)	14/18 (77.8)	21/27 (77.8)	28/42 (66.7)	0.22	0.74
GP IIb/IIIa inhibitors (%)	4/8 (50.0)	3/18 (16.7)	8/27 (29.6)	15/42 (35.7)	0.31	0.12
Beta blockers (%)	7/8 (87.5)	16/18 (88.9)	25/27 (92.6)	39/42 (92.8)	0.79	0.51
ACEi/ARBs (%)	8/8 (100)	18/18 (100)	26/27 (96.3)	39/42 (92.8)	0.74	0.39
Statins (%)	8/8 (100)	18/18 (100)	27/27 (100)	42/42 (100)		
PPI's (%)	3/8 (37.5)	12/18 (66.7)	17/27 (63.0)	23/42 (54.8)	0.50	0.41
At discharge						
Aspirin(%)	8/8 (100)	18/18 (100)	27/27 (100)	42/42 (100)		
Clopidogrel(%)	8/8 (100)	18/18 (100)	27/27 (100)	42/42 (100)		
Beta blockers(%)	5/8 (62.5)	15/18 (83.3)	24/27 (88.9)	38/42 (90.5)	0.19	0.68
ACEi/ARBs(%)	7/8 (87.5)	18/18 (100)	24/27 (88.9)	39/42 (92.9)	0.51	0.18
Statins(%)	7/8 (87.5)	17/18 (94.4)	25/27 (92.6)	39/42 (92.9)	0.94	0.74

*All groups comparison; **Group B vs rest population; Group A—([+]*2/[+]*17); Group B—([+]*2/[-]*17); Group C—([-]*2/[+]*17); Group D—([-]*2/[-]*17); LMWH—Low molecular weight heparin; GP—Glycoprotein; ACEi—Angiotensin-converting-enzyme inhibitor; ARBs—Angiotensin II receptor blockers; PPIs—Proton pump inhibitors.

CYP2C19*2/*17 and prognosis after an acute coronary syndrome

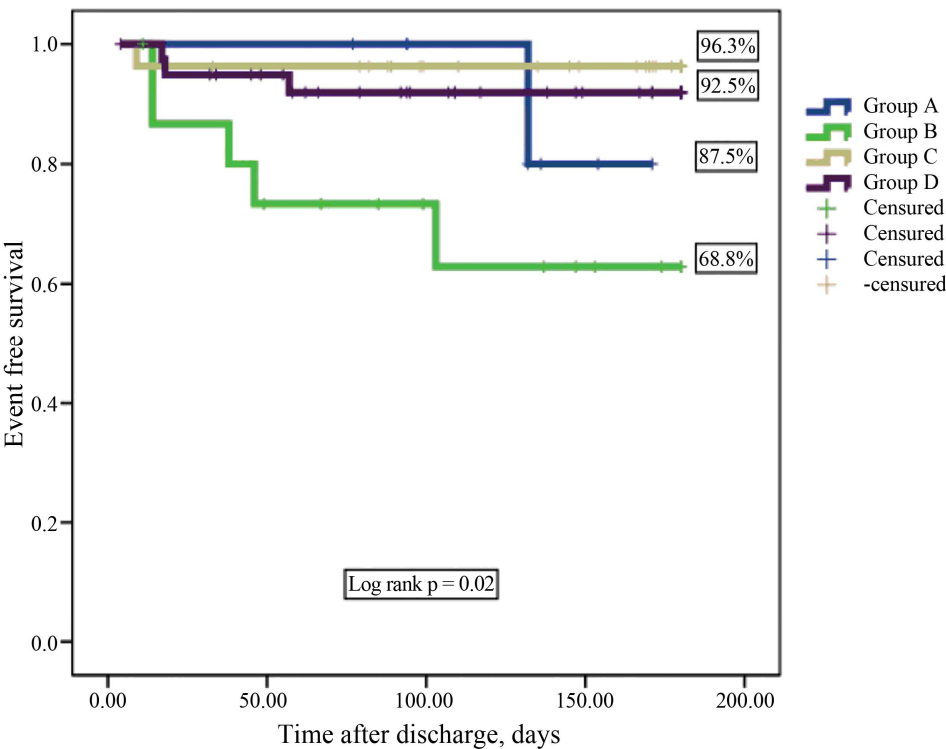


Figure 1. CYP2C19*2 and CYP2C19*17 diplotype combination and prognosis after an acute coronary syndrome.

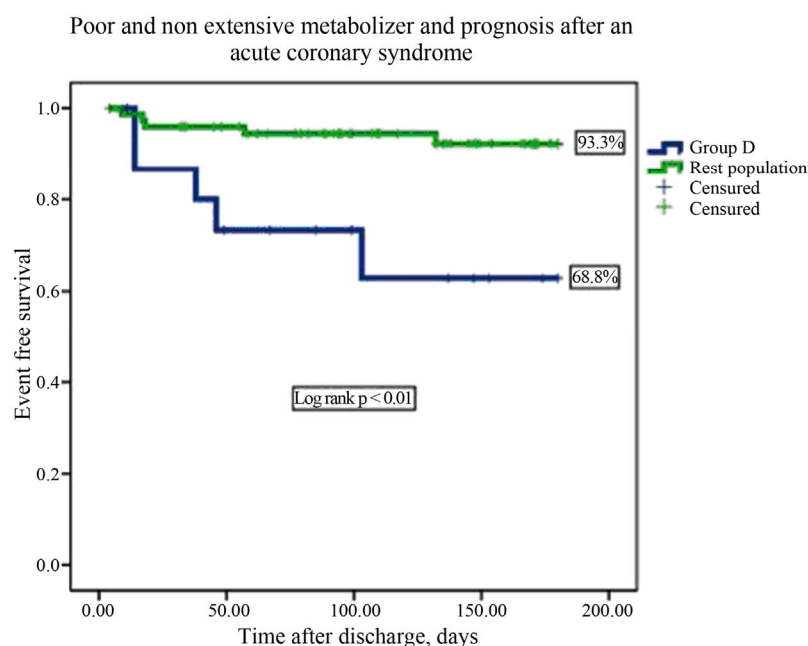


Figure 2. Intermediate and non ultrarapid metabolizers and prognosis after an acute coronary syndrome.

Table 4. Predictors of the combined event.

4.1 Univariate predictors:				
	No event 81	Event 10	OR/Mean difference (95% CI)	p
NSTEMI ^o	28/81 (34.6)	2/10 (20.0)	2.11 (0.42 - 10.63)	0.36
Diabetes ^o	23/81 (28.4)	7/10 (70.0)	5.89 (1.40 - 24.7)	<0.01
Previous myocardial infarction ^o	17/81 (21.0)	2/9 (22.2)	1.08 (0.21 - 5.67)	0.91
CYP2C19 (-)*2/(-)*17 ^o	37/81 (45.7)	3/10 (30.0)	0.51 (0.12 - 2.11)	0.35
CYP2C19 (+)*2/(-)*17 ^o	11/81 (13.6)	5/10 (50.0)	6.34 (1.58 - 25.63)	<0.01
CYP2C19 (-)*2/(+)*17 ^o	33/81 (40.7)	2/10 (20.0)	0.36 (0.07 - 1.82)	0.20
CYP2C19 (+)*2/(+)*17 ^o	7/81 (8.6)	1/10 (10.0)	1.18 (0.13 - 10.67)	0.87
Invasive strategy ^o	19/81 (23.5)	2/10 (20.0)	0.81 (0.16 - 4.17)	0.81
Multivessel disease ^o	25/62 (40.3)	4/8 (50.0)	1.48 (0.34 - 6.48)	0.61
PPIs ^o	48/81 (59.3)	5/10 (50.0)	0.69 (0.18 - 2.56)	0.58
Age, years [*]	60.3 ± 10.9	60.2 ± 9.5	-0.1 (-7.3 - 7.1)	0.98
LVEF, % [*]	60.4 ± 14.2	67.1 ± 15.3	6.8 (-3.5 - 17.0)	0.19
C-reactive protein, mg/dL [*]	3.5 ± 4.1	6.9 ± 7.7	3.5 (0.5 - 6.6)	0.03
GFR, mL/min/m ^{2*}	88.9 ± 35.8	79.5 ± 36.1	-10.5 (-34.4 - 13.4)	0.39
ADP platelet aggregation, U [*]	17.2 ± 7.8	23.4 ± 7.9	6.3 (1.1 - 11.5)	0.04

4.2 Multivariate cox regression analysis			
	HR	95% CI	p
CYP2C19 (+)*2/(-)*17	5.17	1.35 - 19.83	0.02
Diabetes	3.71	0.91 - 15.1	0.07
C-reactive protein (per 1 mg/dl increase)	1.12	0.91 - 1.5	0.23
ADP platelet aggregation (per 5 U increase)	1.84	0.99 - 3.41	0.05
Chi square 21.6; p < 0.01			

* mean ± SD; ^o %; PPIs—Proton pump inhibitors; LVEF—Left ventricular ejection fraction; NSTEMI—Non ST elevation acute myocardial infarction; GFR—Glomerular filtration rate.

(non-intermediate and ultrarapid metabolizers).

Using a candidate gene approach, Hulot *et al* were the first to report an association between the *CYP2C19**2 genotype and ADP-stimulated platelet aggregation in response to clopidogrel [2]. Different genes have been implicated in clinically significant clopidogrel response; however, a recent genome-wide association study clarified the importance of the *CYP2C19**2 genotype regarding the metabolism of clopidogrel [9]. A major locus on chromosome 10q24 that influences clopidogrel response extends across the *CYP2C18-CYP2C19-CYP2C9-CYP2C8* gene cluster. Follow-up genotyping indicated that the common loss-of-function *CYP2C19**2 variant was significantly associated with clopidogrel response and could account for most of the adverse events in the initial genome-wide association study. The *CYP2C19**2 genotype accounted for approximately 12% of the variation in clopidogrel response and was associated with a worse ischemic outcome, while clinical variables such as age, body mass index, and lipid levels were responsible for approximately 10% of the variation in clopidogrel response [9]. An important conclusion from this analysis was that not only stent thrombosis, but also other events such as myocardial infarction, ischemic stroke, unplanned revascularization, and hospitalization for coronary ischemia without revascularization should be assessed with relation to the *CYP2C19**2 genotype [21].

By contrast, carriage of the *CYP2C19**17 allele was previously shown to be associated with increased activation of the *CYP2C19* enzyme, leading to an increased rate of conversion of the pro-drug clopidogrel to an active compound, which was directly associated with a higher degree of platelet inhibition, as analyzed by platelet aggregometry [14]. Assessment of a cohort of post-AMI patients who had undergone percutaneous intervention showed that carriage of *CYP2C19**17 was associated with better clinical outcome regarding ischemic complications [15].

Previous authors have reported that the *CYP2C19**2 and *CYP2C19**17 variants, although 19959 base pairs apart are in linkage disequilibrium, and therefore are not independent of one another. Therefore, individuals heterozygous or homozygous for the *17 allele are less likely to carry the *2 allele, whereas those with no copies of the *17 allele ("wild type" at the *17 locus) are more likely to carry the *2 allele, supporting the concept that the *2 variant could account for most or all of the association with clopidogrel response at the *CYP2C19* locus [22]. According to Gurbel *et al.*, a hypothesis to overcome this disequilibrium would be to study the phenotypic and prognostic influence of *CYP2C19**2/ *CYP2C19**17 diplotypes [22].

Sibbing *et al.* first reported on the phenotypic association of clopidogrel-induced platelet aggregation with the

diplotype *CYP2C19**2 plus *CYP2C19**17. Using platelet aggregometry in patients chronically medicated with clopidogrel, the authors reported that a gradual increase in platelet aggregation was seen, starting with the (-)*2/(+)*17 patients who had the lowest ADP-induced platelet aggregation, to the (-)*2/(-)*17 and (+)*2/(+)*17 patients, and ending with the (+)*2/(-)*17 patients, who exhibited the highest value. It was concluded that the increased platelet aggregation seen with *CYP2C19**2 was in part reduced by the concomitant presence of *CYP2C19**17, although no ischemic or bleeding events were reported for this gene interaction among the 986 stable post-PCI patients with coronary artery disease [3]. A recent paper by Harmsze *et al* confirmed the phenotypic changes seen for this diplotype. They measured platelet aggregation using the Verify Now® and the light transmission aggregation assays, and the results were consistent with the hypothesis that the effect of *CYP2C19**2 effect was partly reduced by the concomitant presence of the *CYP2C19**17 allele. However, their *in vitro* findings were not corroborated with decreased risk of bleeding events or increased ischemic events. The authors proposed that *CYP2C19**2 leads to a complete loss of enzyme function, whereas *CYP2C19**17 only enhances existing enzyme capacity [23].

None of the studies we have discussed included findings on the risk of ischemic events in patients with the diplotype *CYP2C19**2 plus *CYP2C19**17. Although the association between this diplotype and platelet aggregation has been previously reported, in our study, the results of platelet aggregation were not statistically significant for all groups comparison because of the low statistical power of our study with respect to platelet aggregation. Nevertheless the (+)*2/(+)*17 patients had a significant higher platelet reactivity than the (-)*2/(+)*17 patients.

Our study patients represent a real-world ACS cohort, with low risk for bleeding, and an intermediate-to-high risk for ischemic events, probably related to the exclusion of patients older than 75 years of age. Although previous studies have identified significant differences between the allelic and genotypic frequencies of polymorphisms (*CYP2C19**2 and *CYP2C19**17) associated to clopidogrel according to ethnicity [24], our patient population only included Caucasians. We note that the patients with the intermediate plus non-ultrarapid clopidogrel-metabolizing genotype (Group B) had the highest rate of percutaneous coronary intervention for stent placement. Therefore increased platelet reactivity may have been critical for that group of patients, influencing their adverse outcomes with regard to ischemic events. Our data indirectly supports the concept that the loss of function *CYP2C19**2 allele is partly compensated by the concomitant presence of *CYP2C19**17, resulting in

clinically significant outcomes after ACS.

5. CONCLUSION

The *CYP2C19**2 plus *CYP2C19**17 diplotype combination had a significant medium-term effect on the occurrence of ischemic events in patients taking clopidogrel following an acute coronary syndrome.

6. ACKNOWLEDGEMENTS

The authors thank João Pêgo, Gilberto Marques, Carolina Ribeiro, and Alda Reboredo for their work on genotyping.

REFERENCES

- [1] Savi, P., Pereillo, J.M., Uzabiaga, M.F., Combalbert, J., Picard, C., Maffrand, J.P., *et al.* (2000) Identification and biological activity of the active metabolite of clopidogrel. *Journal of Thrombosis and Haemostasis*, **84**, 891-896.
- [2] Hulot, J.S., Bura, A., Villard, E., Azizi, M., Remones, V., Goyenvall, C., *et al.* (2006) Cytochrome P450 2C19 loss-of-function polymorphism is a major determinant of clopidogrel responsiveness in healthy subjects. *Blood*, **108**, 2244-2247. doi:10.1182/blood-2006-04-013052
- [3] Sibbing, D., Gebhard, D., Koch, W., Braun, S., Stegherr, J., Morath, T., *et al.* (2010) Isolated and interactive impact of common *CYP2C19* genetic variants on the antiplatelet effect of chronic clopidogrel therapy. *Journal of Thrombosis and Haemostasis*, **8**, 1685-1693. doi:10.1111/j.1538-7836.2010.03921.x
- [4] Chan, M.Y., Tan, K., Tan, H.C., Huan, P.T., Li, B., Phua, Q.H., *et al.* (2012) *CYP2C19* and *PON1* polymorphisms regulating clopidogrel bioactivation in Chinese, Malay and Indian subjects. *Pharmacogenomics*, **13**, 533-542. doi:10.2217/pgs.12.24
- [5] Geisler, T., Schaeffeler, E., Dippon, J., Winter, S., Buse, V., Bischofs, C., *et al.* (2008) *CYP2C19* and nongenetic factors predict poor responsiveness to clopidogrel loading dose after coronary stent implantation. *Pharmacogenomics*, **9**, 1251-1259. doi:10.2217/14622416.9.9.1251
- [6] Hochholzer, W., Trenk, D., Bestehorn, H.P., Fischer, B., Valina, C.M., Ferenc, M., *et al.* (2006) Impact of the degree of peri-interventional platelet inhibition after loading with clopidogrel on early clinical outcome of elective coronary stent placement. *Journal of the American College of Cardiology*, **48**, 1742-1750. doi:10.1016/j.jacc.2006.06.065
- [7] Sibbing, D., Stegherr, J., Latz, W., Koch, W., Mehilli, J., Dorfler, K., *et al.* (2009) Cytochrome P450 2C19 loss-of-function polymorphism and stent thrombosis following percutaneous coronary intervention. *European Heart Journal*, **30**, 916-922. doi:10.1093/eurheartj/ehp041
- [8] Collet, J.P., Hulot, J.S., Pena, A., Villard, E., Esteve, J.B., Silvain, J., *et al.* (2009) Cytochrome P450 2C19 polymorphism in young patients treated with clopidogrel after myocardial infarction: A cohort study. *Lancet*, **373**, 309-317. doi:10.1016/S0140-6736(08)61845-0
- [9] Shuldiner, A.R., O'Connell, J.R., Bliden, K.P., Gandhi, A., Ryan, K., Horenstein, R.B., *et al.* (2009) Association of cytochrome P450 2C19 genotype with the antiplatelet effect and clinical efficacy of clopidogrel therapy. *JAMA*, **302**, 849-857. doi:10.1001/jama.2009.1232
- [10] Mega, J.L., Close, S.L., Wiviott, S.D., Shen, L., Hockett, R.D., Brandt, J.T., *et al.* (2009) Cytochrome p-450 polymorphisms and response to clopidogrel. *The New England Journal of Medicine*, **360**, 354-362. doi:10.1056/NEJMoa0809171
- [11] Zabalza, M., Subirana, I., Sala, J., Lluís-Ganella, C., Lucas, G., Tomas, M., *et al.* (2012) Meta-analyses of the association between cytochrome *CYP2C19* loss- and gain-of-function polymorphisms and cardiovascular outcomes in patients with coronary artery disease treated with clopidogrel. *Heart*, **98**, 100-108. doi:10.1136/hrt.2011.227652
- [12] Mega, J.L., Simon, T., Collet, J.P., Anderson, J.L., Antman, E.M., Bliden, K., *et al.* (2010) Reduced-function *CYP2C19* genotype and risk of adverse clinical outcomes among patients treated with clopidogrel predominantly for PCI: A meta-analysis. *JAMA*, **304**, 1821-1830. doi:10.1001/jama.2010.1543
- [13] Sim, S.C., Risinger, C., Dahl, M.L., Aklillu, E., Christensen, M., Bertilsson, L., *et al.* (2006) A common novel *CYP2C19* gene variant causes ultrarapid drug metabolism relevant for the drug response to proton pump inhibitors and antidepressants. *Clinical Pharmacology & Therapeutics*, **79**, 103-113. doi:10.1016/j.clpt.2005.10.002
- [14] Sibbing, D., Koch, W., Gebhard, D., Schuster, T., Braun, S., Stegherr, J., *et al.* (2010) Cytochrome 2C19*17 allelic variant, platelet aggregation, bleeding events, and stent thrombosis in clopidogrel-treated patients with coronary stent placement. *Circulation*, **121**, 512-518. doi:10.1161/CIRCULATIONAHA.109.885194
- [15] Tiroch, K.A., Sibbing, D., Koch, W., Roosen-Runge, T., Mehilli, J., Schomig, A., *et al.* (2010) Protective effect of the *CYP2C19**17 polymorphism with increased activation of clopidogrel on cardiovascular events. *American Heart Journal*, **160**, 506-512. doi:10.1016/j.ahj.2010.06.039
- [16] The Thrombin Receptor Antagonist for Clinical Event Reduction in Acute Coronary Syndrome (TRA* CER) trial: Study design and rationale. *American Heart Journal*. 2009, **158**, 327-344.
- [17] Chin, C.T., Roe, M.T., Fox, K.A., Prabhakaran, D., Marshall, D.A., Petitjean, H., *et al.* (2010) Study design and rationale of a comparison of prasugrel and clopidogrel in medically managed patients with unstable angina/non-ST-segment elevation myocardial infarction: The Targeted platelet Inhibition to clarify the Optimal strategy to medically manage Acute Coronary Syndromes (TRILOGY ACS) trial. *American Heart Journal*, **160**, 16-22.
- [18] Scott, S.A., Sangkuhl, K., Gardner, E.E., Stein, C.M., Hulot, J.S., Johnson, J.A., *et al.* (2011) Clinical Pharmacogenetics Implementation Consortium guidelines for cytochrome P450-2C19 (*CYP2C19*) genotype and clopidogrel therapy. *Clinical Pharmacology & Therapeutics*,

- 90**, 328-332. [doi:10.1038/clpt.2011.132](https://doi.org/10.1038/clpt.2011.132)
- [19] Thygesen, K., Alpert, J.S. and White, H.D. (2007) Universal definition of myocardial infarction. *European Heart Journal*, **28**, 2525-2538.
- [20] Anderson, J.L., Adams, C.D., Antman, E.M., Bridges, C.R., Califf, R.M., Casey Jr., D.E., *et al.* (2007) ACC/AHA 2007 guidelines for the management of patients with unstable angina/non ST-elevation myocardial infarction: A report of the American College of Cardiology/American Heart Association Task Force on Practice Guidelines (writing committee to revise the 2002 Guidelines for the Management of Patients with Unstable Angina/Non ST-Elevation Myocardial Infarction): Developed in collaboration with the American College of Emergency Physicians, the Society for Cardiovascular Angiography and Interventions, and the Society of Thoracic Surgeons: Endorsed by the American Association of Cardiovascular and Pulmonary Rehabilitation and the Society for Academic Emergency Medicine. *Circulation*, **116**, 148-304. [doi:10.1161/CIRCULATIONAHA.107.181940](https://doi.org/10.1161/CIRCULATIONAHA.107.181940)
- [21] Gurbel, P.A., Tantry, U.S., Shuldiner, A.R. and Kereiakes, D.J. (2010) Genotyping: One piece of the puzzle to personalize antiplatelet therapy. *Journal of the American College of Cardiology*, **56**, 112-116. [doi:10.1016/j.jacc.2010.04.008](https://doi.org/10.1016/j.jacc.2010.04.008)
- [22] Gurbel, P.A., Tantry, U.S. and Shuldiner, A.R. (2010) Letter by Gurbel *et al.* regarding article, "Cytochrome 2C19*17 allelic variant, platelet aggregation, bleeding events, and stent thrombosis in clopidogrel-treated patients with coronary stent placement". *Circulation*, **122**, 478. [doi:10.1161/CIRCULATIONAHA.110.943548](https://doi.org/10.1161/CIRCULATIONAHA.110.943548)
- [23] Harmsze, A.M., van Werkum, J.W., Hackeng, C.M., Ruven, H.J., Kelder, J.C., Bouman, H.J., *et al.* (2012) The influence of CYP2C19*2 and *17 on on-treatment platelet reactivity and bleeding events in patients undergoing elective coronary stenting. *Pharmacogenetics and Genomics*, **22**, 169-175. [doi:10.1097/FPC.0b013e32834ff6e3](https://doi.org/10.1097/FPC.0b013e32834ff6e3)
- [24] Santos, P.C., Soares, R.A., Santos, D.B., Nascimento, R.M., Coelho, G.L., Nicolau, J.C., *et al.* (2011) CYP2C19 and ABCB1 gene polymorphisms are differently distributed according to ethnicity in the Brazilian general population. *BMC Medical Genetics*, **12**, 13. [doi:10.1186/1471-2350-12-13](https://doi.org/10.1186/1471-2350-12-13)