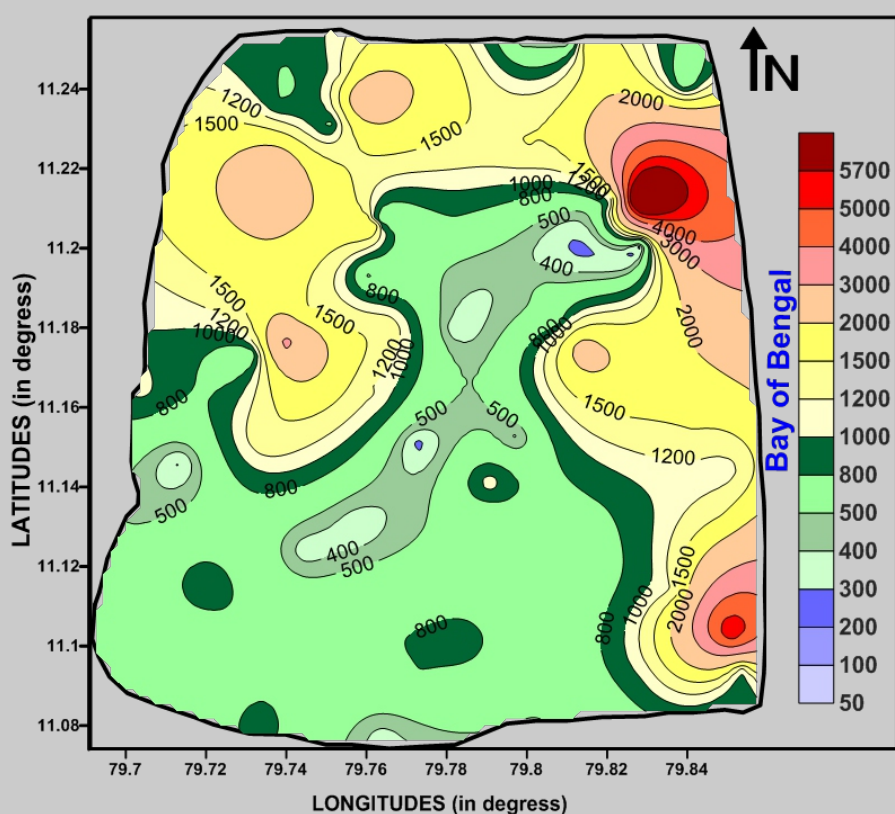


# Journal of Geographic Information System



ISSN: 2151-1950



# Journal Editorial Board

ISSN: 2151-1950 (Print) ISSN: 2151-1969 (Online)

<http://www.scirp.org/journal/jgis>

---

## Editor-in-Chief

**Prof. Francisco J. Tapiador**

University of Castilla-La Mancha (UCLM), Spain

## Editorial Board

**Dr. Alia I. Abdelmoty**

Cardiff University, UK

**Dr. Tofael Ahamed**

University of Tsukuba, Japan

**Prof. Dafer Algarni**

King Saud University, Saudi Arabia

**Prof. Carlos Marcelo Di Bella**

Instituto de Clima y Agua CIRN-INTA Castelar, Argentina

**Prof. Christophe Claramunt**

Naval Academy Research Institute, France

**Prof. Weihong Cui**

International Europe and Asia Academy of Sciences, China

**Prof. Fuchu Dai**

Chinese Academy of Sciences, China

**Prof. Anrong Dang**

Tsinghua University, China

**Prof. Hossein Ghadiri**

Griffith University, Australia

**Prof. Shuanggen Jin**

Shanghai Astronomical Observatory, China

**Prof. Saro Lee**

Korea Institute of Geoscience and Mineral Resources, South Korea

**Dr. Xiang Li**

East China Normal University, China

**Prof. Michel Mainguenaud**

Institut National des Sciences Appliquées, France

**Prof. Jordi Martí-Henneberg**

University of Lleida, Spain

**Prof. Hervé Martin**

Joseph Fourier University, France

**Prof. Christopher James Pettit**

The University of Melbourne, Australia

**Dr. Saied Pirasteh**

University of Waterloo, Canada

**Prof. Biswajeet Pradhan**

Dresden University of Technology, Germany

**Prof. Michael D. Proctor**

University of Central Florida, USA

**Prof. Xiaosheng Qin**

Nanyang Technological University, Singapore

**Prof. Shih-Lung Shaw**

University of Tennessee, USA

**Dr. P. S. Sriraj**

University of Illinois at Chicago, USA

**Prof. Eddy Lynn Usery**

Center of Excellence for Geospatial Information Science, USA

**Dr. Herna Viktor**

University of Ottawa, Canada

**Prof. Jianhua Xu**

East China Normal University, China

**Prof. Xiaohuan Yang**

Chinese Academy of Sciences, China

**Prof. Axing Zhu**

University of Wisconsin, USA

**Dr. Liangfeng Zhu**

East China Normal University, China

# Table of Contents

Volume 8    Number 4

August 2016

## Phytogenic Mounds (Nebkhas): Effect of *Tricomaria usillo* on Sand Entrapment in Central-West of Argentina

G. Pastrán, E. M. Carretero.....429

## Geo-Spatial Analysis of Oil Spill Distribution and Susceptibility in the Niger Delta Region of Nigeria

S. Whanda, O. Adekola, B. Adamu, S. Yahaya, P. C. Pandey.....438

## Critical Factors of Vulnerability That Enable Medina Gounass (Dakar/Senegal) to Adapt against Seasonal Flood Events

O. D. Sané, A. T. Gaye, M. Diakhaté, M. Aziadekey.....457

## Development of a GIS Based Public Transport Composite Social Need Index in Jeddah

M. Aljoufie.....470

## Mapping of the Water Table Levels of Unconfined Aquifers Using Two Interpolation Methods

O. Augusto Filho, W. Soares, C. I. Fernández.....480

## Assessing the Utility of Sentinel-1 C Band Synthetic Aperture Radar Imagery for Land Use Land Cover Classification in a Tropical Coastal Systems When Compared with Landsat 8

M. L. Fonteh, F. Theophile, M. L. Cornelius, R. Main, A. Ramoelo, M. A. Cho.....495

## Above Ground Biomass Assessment from Combined Optical and SAR Remote Sensing Data in Surat Thani Province, Thailand

K. K. Kumar, M. Nagai, A. Witayangkurn, K. Kritiyutanant, S. Nakamura.....506

## Automatic Extraction of Urban Road Centerlines from High-Resolution Satellite Imagery Using Automatic Thresholding and Morphological Operation Method

A. Raziq, A. Xu, Y. Li.....517

## Mapping of Salinity Ingress Using Galdit Model for Sirkali Coastal Region: A Case Study

V. Satishkumar, S. Sankaran, Taufiquewarsi, B. Amarender, R. Dhakate.....526

## Monitoring the Changing Pattern of Land Use in the Rangpur City Corporation Using Remote Sensing and GIS

W. Islam, S. C. Sarker.....537

# **Journal of Geographic Information System (JGIS)**

## **Journal Information**

### **SUBSCRIPTIONS**

The *Journal of Geographic Information System* (Online at Scientific Research Publishing, [www.SciRP.org](http://www.SciRP.org)) is published bimonthly by Scientific Research Publishing, Inc., USA.

#### **Subscription rates:**

Print: \$89 per issue.

To subscribe, please contact Journals Subscriptions Department, E-mail: [sub@scirp.org](mailto:sub@scirp.org)

### **SERVICES**

#### **Advertisements**

Advertisement Sales Department, E-mail: [service@scirp.org](mailto:service@scirp.org)

#### **Reprints (minimum quantity 100 copies)**

Reprints Co-ordinator, Scientific Research Publishing, Inc., USA.

E-mail: [sub@scirp.org](mailto:sub@scirp.org)

### **COPYRIGHT**

#### **COPYRIGHT AND REUSE RIGHTS FOR THE FRONT MATTER OF THE JOURNAL:**

Copyright © 2016 by Scientific Research Publishing Inc.

This work is licensed under the Creative Commons Attribution International License (CC BY).

<http://creativecommons.org/licenses/by/4.0/>

#### **COPYRIGHT FOR INDIVIDUAL PAPERS OF THE JOURNAL:**

Copyright © 2016 by author(s) and Scientific Research Publishing Inc.

#### **REUSE RIGHTS FOR INDIVIDUAL PAPERS:**

Note: At SCIRP authors can choose between CC BY and CC BY-NC. Please consult each paper for its reuse rights.

#### **DISCLAIMER OF LIABILITY**

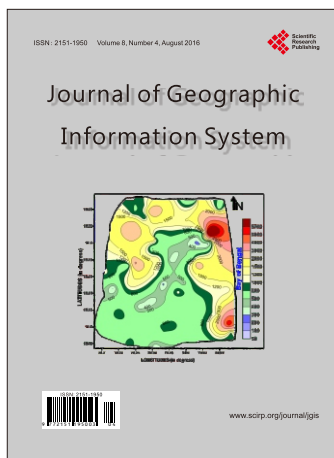
Statements and opinions expressed in the articles and communications are those of the individual contributors and not the statements and opinion of Scientific Research Publishing, Inc. We assume no responsibility or liability for any damage or injury to persons or property arising out of the use of any materials, instructions, methods or ideas contained herein. We expressly disclaim any implied warranties of merchantability or fitness for a particular purpose. If expert assistance is required, the services of a competent professional person should be sought.

### **PRODUCTION INFORMATION**

For manuscripts that have been accepted for publication, please contact:

E-mail: [jgis@scirp.org](mailto:jgis@scirp.org)





# *Call for Papers*

## Journal of Geographic Information System (JGIS)

ISSN 2151-1950 (Print) ISSN 2151-1969 (Online)

<http://www.scirp.org/journal/jgis/>

**JGIS** is an international refereed journal dedicated to the latest advancement of Geographic Information System. The goal of this journal is to keep a record of the state-of-the-art research and promote the research work in these fast moving areas. The journal publishes the highest quality, original papers included but not limited to the fields:

### Subject Coverage

- Cartography and Geodesy
- Computational Geometry
- Computer Vision Applications in GIS
- Distributed, Parallel, and GPU Algorithms for GIS
- Earth Observation
- Environmental Geomatics—GIS, RS and Other Spatial Information Technologies
- Geographic Information Retrieval
- Geographical Analysis for Urban and Regional Development
- GIS and Cloud Computing
- GIS and High Performance Computing
- Human Computer Interaction and Visualization
- Image and Video Understanding
- Location Privacy, Data Sharing and Security
- Location-Based Services
- Performance Evaluation
- Photogrammetry
- Similarity Searching
- Social Networks and Volunteer Geographic
- Spatial Analysis and Integration
- Spatial and Spatio-Temporal Information Acquisition
- Spatial Data Mining and Knowledge Discovery
- Spatial Data Quality and Uncertainty
- Spatial Data Structures and Algorithms
- Spatial Data Warehousing, OLAP, and Decision Support
- Spatial Information and Society
- Spatial Modeling and Reasoning
- Spatial Query Processing and Optimization
- Spatial Semantic Web
- Spatio-Temporal Data Handling
- Spatio-Temporal Sensor Networks
- Spatio-Temporal Stream Processing
- Spatio-Textual Searching
- Standardization and Interoperability for GIS
- Storage and Indexing
- Systems, Architectures and Middleware for GIS
- Traffic Telematics
- Transportation
- Visual Languages and Querying
- Wireless, Web, and Real-Time Applications

We are also interested in short papers (letters) that clearly address a specific problem, and short survey or position papers that sketch the results or problems on a specific topic. Authors of selected short papers would be invited to write a regular paper on the same topic for future issues of the **JGIS**.

### Notes for Intending Authors

Submitted papers should not have been previously published nor be currently under consideration for publication elsewhere. Paper submission will be handled electronically through the website. All papers are refereed through a peer review process. For more details about the submissions, please access the website.

### Website and E-mail

<http://www.scirp.org/journal/jgis>

E-mail: [jgis@scirp.org](mailto:jgis@scirp.org)